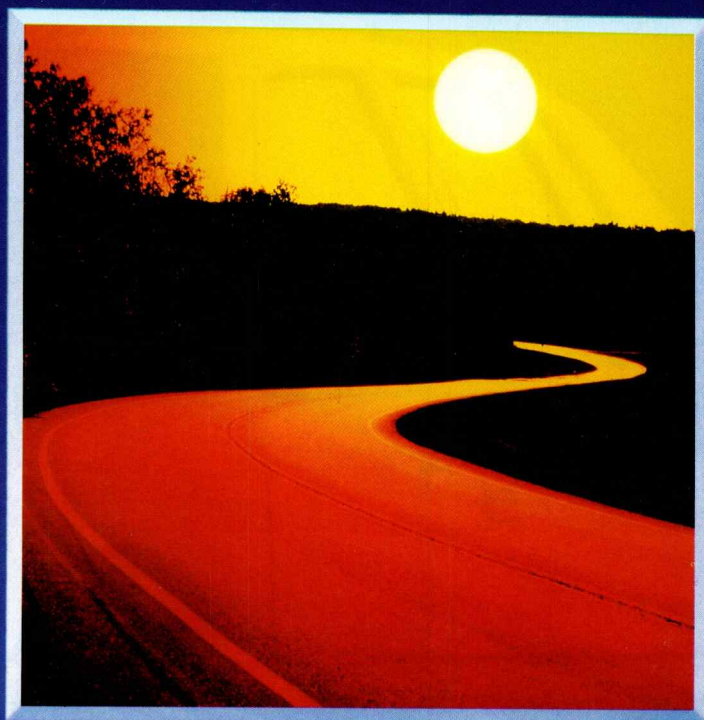


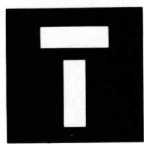
DODGE

CARS & TRUCKS



1990

CATCH THE SPIRIT.



he spirit of exceptional family transportation is right here. It's a mid-size car with outstanding roominess, keen performance, and practical affordability. Choose Dodge Spirit, a full five-seater, with seating for six optional, powered by a fuel-efficient 2.5-litre EFI balance-shaft engine, or optional 3.0-litre V6; Spirit LE featuring premium front seats with centre armrests and driver's adjustable lumbar support; or the nimble response of Spirit ES, with standard turbo power, four-wheel disc brakes and 15-inch cast aluminum wheels. Dodge Spirit. The family car built for the long run.



About this catalogue. Since the time of printing, some of this information may have been updated. Ask your Dealer for details before ordering. Some of the equipment shown or described may be optional and available only at extra cost.



*Room and
comfort for the
whole family;
performance
for the
enthusiast.*

DODGE SPIRIT SELECTED STANDARD AND OPTIONAL FEATURES

	Dodge Spirit	Dodge Spirit LE	Dodge Spirit ES
AIR BAG SYSTEM – Driver side only	O	O	O
AIR CONDITIONING – Bi-level	O	O	O
BRAKES – Power-assisted vented front disc, self-adjusting rear drum	S	S	NA
Power-assisted vented 4-wheel disc	NA	NA	S
CHILD-SEAT ANCHORAGE PROVISION	S	S	S
CORROSION PROTECTION – Extensive use of galvanized steel; lower bodyside urethane stone chip-resistant coating	S	S	S
DEFROSTER – Electric, rear window; DEMISTERS – Front side windows	S	S	S
DOOR LOCKS – Rear, child-protection	S	S	S
EXHAUST SYSTEM – Stainless steel	S	S	S
HEADLAMPS – Halogen, aerostyle; daytime running lights	S	S	S
POWER ASSISTS – Door locks, mirrors (heated) and windows; driver seat	O	O	O
RADIOS – Electronically tuned, with digital readout and clock	S	S	S
AM stereo*/FM stereo, 2 speakers (4 speakers on LE)	S	S	NA
AM stereo*/FM stereo cassette, 4 speakers	O	O	S
AM stereo*/FM stereo, Chrysler-Infinity™ I	O	O	O
AM stereo*/FM stereo, Chrysler-Infinity™ II	NA	O	O
REMOTE RELEASES – Trunk lid, hood and fuel door	S	S	S
SEAT BELTS – 3-point shoulder/lap, 2 front, 2 rear; lap belt(s) for centre positions	S	S	S
SPEED CONTROL – Electronic, with steering wheel-mounted controls	O	S	S
STEERING COLUMN – Tilt	O	S	S
STEERING – Power-assisted, rack-and-pinion, 14:1 ratio	S	S	S
SUSPENSION – Firm ride and handling; special-valving front and rear gas-charged shock absorbers	S	S	S
TRIP COMPUTER – Mini, "Traveller," 5-function	NA	NA	S
WHEELS – 15" cast aluminum	O	O	S
WINDSHIELD WIPERS – Variable-delay, intermittent	S	S	S

S – Standard Equipment O – Optional Equipment NA – Not Available
*Some AM stereo broadcasting may not be compatible with this radio.

MAJOR DIMENSIONS	4-Door Sedan	
	mm	in.
Wheelbase	2625	103.3
Overall Length	4600	181.2
Overall Width	1730	68.1
Overall Height	1360	53.5

FRONT-WHEEL-DRIVE ENGINES AND TRANSAXLES	2.5-litre 4-cyl. SOHC Balance-Shaft EFI	2.5-litre 4-cyl. Turbo I Balance-Shaft SOHC MPI Turbo	3.0-litre MPI V6(a) SOHC x 2
Transaxle and OTGR* Availability			
5-Speed Manual – Std.	2.51	2.51	NA
3-Speed Aut. – Opt.	3.02(b)	3.02	NA
4-Speed Aut. – Opt.	NA	NA	2.36(b)

EFI – Electronic Fuel Injection SOHC – Single Overhead Camshaft NA – Not Available
MPI – Multi-point Electronic Fuel Injection OTGR* – Overall Top Gear Ratio

(a) Built by Mitsubishi Motors Corporation.

(b) With lock-up torque converter for highway fuel efficiency.

THIS CATALOGUE DOES NOT LIST ALL STANDARD AND OPTIONAL EQUIPMENT ITEMS; SOME OPTIONS ARE AVAILABLE ONLY IN COMBINATION WITH OTHERS AND SOME EQUIPMENT MAY BE SUBJECT TO AVAILABILITY RESTRICTIONS. SEE YOUR DEALER FOR DETAILS.

FUN TO DRIVE SHADOW.



Shadow ES, above, with rear spoiler, ground effects side sills and the high-tech power of its optional 2.2-litre Variable Nozzle Intercooled Turbo IV engine. Right, driver convenience and attention to detail characterize the sports sedan interior of Shadow ES.





Plending your desire for a sporty car with your need for practicality is what Shadow is all about. And Shadow is renowned for its extensive list of standard conveniences. Both the two-door and four-door Shadow have seating for five. And although the silhouette is that of a trim sports sedan, every Shadow provides the extra cargo-carrying convenience of a liftgate and a folding rear seat.

DODGE SHADOW SELECTED STANDARD AND OPTIONAL FEATURES	2-Door & 4-Door	ES 2-Door & 4-Door
AIR BAG SYSTEM – Driver side only	O	O
AIR CONDITIONING	O	O
BRAKES – Power-assisted, vented front disc, self-adjusting rear drum	S	NA
Power-assisted 4-wheel disc	O	S
CHILD-SEAT ANCHORAGE PROVISION	S	S
CORROSION PROTECTION – Extensive use of galvanized steel; lower bodyside urethane stone chip-resistant coating	S	S
DEFROSTER – Electric, rear window	O	S
EXHAUST SYSTEM – Stainless steel	S	S
FOG LAMPS – Front (2)	NA	S
HEADLAMPS – Halogen; daytime running lights	S	S
INSTRUMENTATION – Includes tachometer, trip odometer	S	S
RADIOS – Electronically tuned, with digital readout and clock	S	S
AM stereo*/FM stereo, 2 speakers	S	NA
AM stereo*/FM stereo cassette, 4 speakers	O	S
AM stereo*/FM stereo, premium cassette, with joystick speaker control, and Infinity™-brand speakers (4)	O	O
SEATS – Front bucket, cloth-faced; low-back reclining with adjustable head restraints; rear one-piece folding seatback	S	NA
Performance front bucket; rear seat with 40/60 split folding seatbacks	NA	S
SEAT BELTS – 3-point shoulder/lap belts, 2 front, 2 rear; lap belt centre rear	S	S
SUSPENSION – Front Precision-Handling Iso-strut; front and rear antisway bars and gas-charged shock absorbers	S	NA
Front and rear Special Sport: higher rate springs	O	S
TIRES – Steel-belted radials, All-Season	S	NA
Steel-belted radials, Performance-Handling, All-Season	O	S
WINDSHIELD WIPERS – Variable-delay, intermittent, airfoil blades	S	S

S – Standard Equipment O – Optional Equipment NA – Not Available
*Some AM stereo broadcasting may not be compatible with this radio.

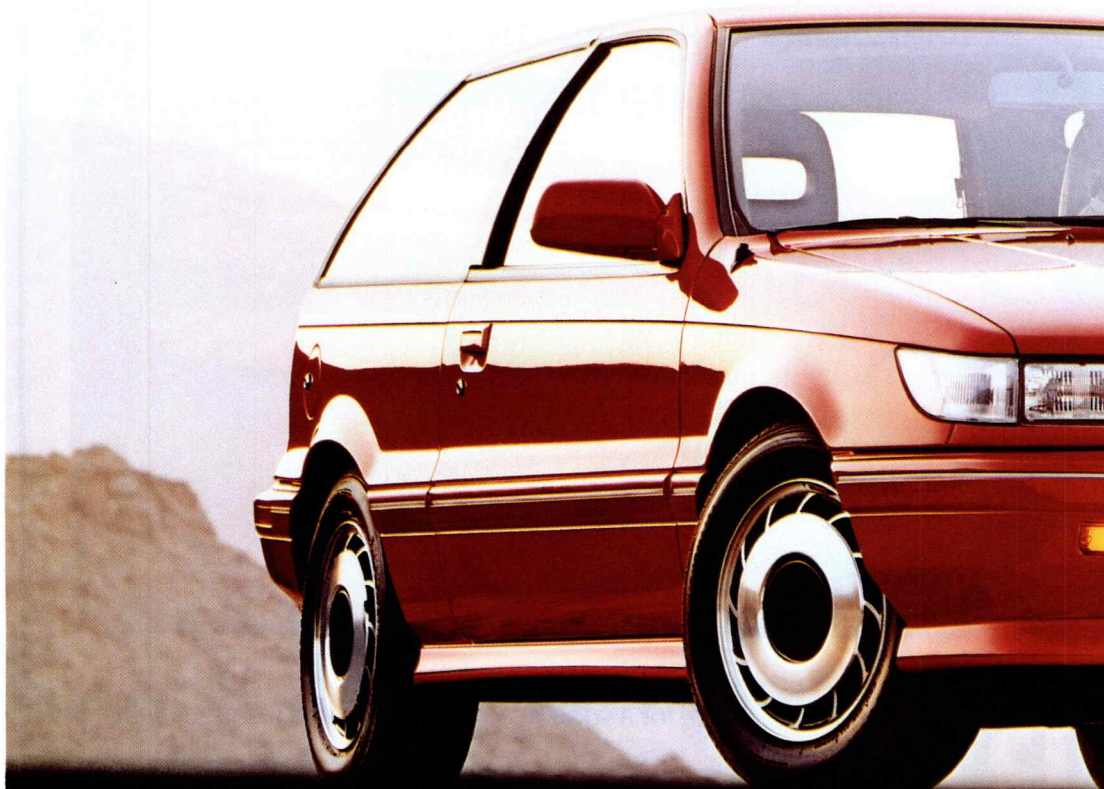
MAJOR DIMENSIONS	3-Door Liftback mm	3-Door Liftback in.	5-Door Liftback mm	5-Door Liftback in.
Wheelbase	2465	97.0	2465	97.0
Overall Length	4360	171.7	4360	171.7
Overall Width	1710	67.3	1710	67.3
Overall Height	1340	52.7	1340	52.7

FRONT-WHEEL- DRIVE ENGINES AND TRANSAXLES	2.2-litre 4-cyl. EFI SOHC	2.5-litre 4-cyl. EFI SOHC	2.5-litre 4-cyl. Turbo I SOHC	2.2-litre 4-cyl. Intercooled Variable- Nozzle Turbo IV SOHC
Transaxle and OTGR* Availability				
5-Speed Manual – Standard	2.51	2.51	2.51	2.74
3-Speed Automatic – Optional	3.02(a)	3.02(a)	3.02	NA

EFI – Electronic Fuel Injection
*Overall Top Gear Ratio (OTGR)

SOHC – Single Overhead Camshaft
(a)With lock-up torque converter for highway fuel efficiency.

Real value is a matter of getting what you want for what you can afford. And what drivers want today is engineering integrity that translates into reliable day-to-day performance, easy handling and that personal element of comfort and style. The highly acclaimed Colt 200 models meet those expectations with impressive packages of engineering and styling features ... at prices that mean real value. Colt 200 comes standard with the proven 1.5 litre fuel-efficient engine and slick five-speed manual – or optional automatic. A sporty 1.6 litre 16-valve DOHC engine is available in some models. Colt 200 3-door hatchback models have split fold-down rear seats for added versatility.





COLT 200 SELECTED STANDARD AND OPTIONAL FEATURES	200 E 3-Door/ 4-Door	200 GT 3-Door/ DL 4-Dr.	200 GT/SX DOHC 3-Dr./4-Dr.	200 LX/ LX DOHC 4-Door
AIR CONDITIONING	NA	O	O	O
BRAKES – Power-assisted, vented front disc, rear drum	S	S	NA	S
Power-assisted, vented front, 4-wheel disc	NA	NA	S	NA
CHILD-SEAT ANCHORAGE PROVISION (4-door only)	S	S	S	S
CORROSION PROTECTION – Extensive use of galvanized steel, lower bodyside urethane stone chip-resistant coating	S	S	S	S
DEFROSTER – Rear window; DEMISTERS – Front side windows	S	S	S	S
DOOR LOCKS – Rear, child-protection (4-door only)	S	S	S	S
EXHAUST SYSTEM – Stainless steel	S	S	S	S
HEADLAMPS – Halogen; daytime running lights	S	S	S	S
REMOTE RELEASES – Fuel door and trunk lid/liftgate (NA E, DL 4-door)	S	S	S	S
SEATS – Front bucket, cloth insert, reclining with adjustable head restraints	S	NA	NA	NA
Front bucket, all-cloth seat facings, reclining	NA	S	NA	NA
Front bucket, luxury full-face cloth, with dual recliners	NA	NA	NA	S
Sport, front bucket, all-cloth seat facings	NA	NA	S	NA
Rear seat, split folding (NA E, DL 4-door)	S	S	S	S
SEAT BELTS – 3-point lap/shoulder belts: front and outboard rear	S	S	S	S
SHELF PANEL – Rear (removable on 3-door; optional E 3-door)	O	S	S	S
STEERING – Variable torque, rack-and-pinion	S	S	NA	NA
Power-assisted, rack-and-pinion	O	O	S	S
SUSPENSION – Independent, front strut; rear trailing arm	S	S	S	S
Sport, with heavy-duty front antisway bar and coil springs	NA	NA	S	NA
TIRES – Steel-belted radials, black sidewalls	S	S	S	S
WIPER/WASHER – Rear window (3-door only)	O	S	S	NA

S – Standard Equipment O – Optional Equipment NA – Not Available

MAJOR DIMENSIONS	Colt 200 3-Door Hatchback		Colt 200 4-Door Sedan	
Wheelbase	2385 mm	93.9 in.	2455 mm	96.7 in.
Overall Length	4030 mm	158.7 in.	4320 mm	170.1 in.
Overall Width	1665 mm	65.5 in.	1670 mm	65.7 in.
Overall Height	1375 mm	54.1 in.	1400 mm	55.1 in.

FRONT-WHEEL-DRIVE ENGINES AND TRANSAXLES	1.5-litre 4-cyl. SOHC EFI	1.6-litre 4-cyl. DOHC – 16-Valve EFI
Engine Availability	E, DL, GT and LX	GT and LX with DOHC, and SX
Transaxle – 5-Spd Man.	Standard ⁽¹⁾	Standard
3-Spd Auto.	Optional	NA
4-Spd Auto.	NA	Optional

⁽¹⁾5-speed not available on Colt 200 LX 4-Door: automatic is standard equipment
 NA – Not Available SOHC – Single Overhead Camshaft
 DOHC – Double Overhead Camshaft EFI – Electronic Fuel Injection

SPARK OF INDEPENDENCE.



Colt 100, in four-door compact sedan or three-door hatchback, ignites an independent lifestyle for all kinds of people: as a first car to run to college, as a second car for the family, as an easy-on-the-bank-account alternative after the kids have flown the nest. Colt 100 is a no-nonsense combination of quality engineering, practical design and affordable choices.



Colt 100 four-door sedan offers a wide selection of interiors and drivetrains for your style of driving.



Colt 100 Turbo, right, combines passing punch for the highway and three-door hatchback versatility.

COLT 100 SELECTED STANDARD AND OPTIONAL FEATURES

	E 3-Door/ 4-Door	DL 3-Door/ 4-Door	DL Turbo 3-Door	LX/ LX Turbo 4-Door
AIR CONDITIONING	NA	O	O	O
BRAKES – Power-assisted, front disc; rear drum	S	S	S	S
CHILD-SEAT ANCHORAGE PROVISION	S	S	S	S
CONSOLE – Floor, with storage bin and tray	S	S	S	S
CORROSION PROTECTION – Extensive use of galvanized steel, lower bodyside urethane stone chip-resistant coating	S	S	S	S
DEFROSTER – Rear window; DEMISTERS – Front side windows	S	S	S	S
DOOR LOCKS – Rear, child-protection (4-door models)	S	S	NA	S
HEADLAMPS – Halogen; daytime running lights	S	S	S	S
RADIOS – AM/FM stereo with 4 speakers	O	O	O	NA
AM/FM stereo electronically tuned with cassette	NA	O	O	O
SEATS – Front bucket, low-back, vinyl with dual recliners	S	NA	NA	NA
Front bucket, low-back, cloth-and-vinyl with dual recliners	O	S	NA	NA
Front bucket, sport, full-face cloth, with dual recliners (NA DL 4-door)	NA	S	S	S
Rear, folding (NA 100 E & DL 4-door)	S	S	S	S
SEAT BELTS – 3-point lap/shoulder; front and outboard rear	S	S	S	S
SHELF PANEL – Rear (removable on 3-door)	O	S	S	S
SUSPENSION – Independent, front strut; rear trailing arm	S	S	S	S
Sport with nitrogen front shocks, heavy-duty antisway bars	NA	NA	S	S
TIRES – Steel-belted radials, black sidewalls	S	S	S	S

S – Standard Equipment O – Optional Equipment NA – Not Available

MAJOR DIMENSIONS	Colt 100 3-Door Hatchback		Colt 100 4-Door Sedan	
Wheelbase	2380 mm	93.7 in.	2380 mm	93.7 in.
Overall Length	3995 mm	157.3 in.	4295 mm	169.1 in.
Overall Width	1620 mm	63.8 in.	1620 mm	63.8 in.
Overall Height	1360 mm	53.5 in.	1360 mm	53.5 in.

FRONT-WHEEL-DRIVE ENGINES AND TRANSAXLES	1.5-litre 4-cyl. SOHC 2-Barrel	1.6-litre 4-cyl. Turbocharged SOHC EFI
Transaxle		
– 4-Speed Manual	Standard – E 3-Door	NA
– 5-Speed Manual	Standard – E 4-Door DL, Optional E 3-Door	Standard – DL Turbo, LX Turbo
– 3-Speed Automatic	Standard – LX, Optional E 4-Door, DL	NA

NA – Not Available SOHC – Single Overhead Camshaft
EFI – Electronic Fuel Injection

OMNI TAKES ITS FUN SERIOUSLY.



Seating for five with four-door hatchback versatility. With only two on board, the rear seat folds down to double the available cargo space.

Omni offers comfortable standard low-back front seats or optional high-back sport buckets.



Whether shopping-and-going, or winding through back roads, front-wheel-drive Dodge Omni will take you with zeal. With its standard 2.2-litre EFI engine coupled to a five-speed manual or optional automatic, Omni has extra power and response that you might not expect from a car that is so affordable.

DODGE OMNI SELECTED STANDARD AND OPTIONAL FEATURES

	Omni
AIR BAG SYSTEM – Driver side, includes Sport steering wheel	O
AIR CONDITIONING – Bi-level	O
BRAKES – Power-assisted front disc, self-adjusting rear drum	S
CHILD-SEAT ANCHORAGE PROVISION	S
CONSOLE – Front, with shift lever housing, includes cubby box and ashtray light	S
CORROSION PROTECTION – Extensive use of galvanized steel; lower bodyside urethane stone chip-resistant coating	S
DEFROSTER – Electric, rear window	S
EXHAUST SYSTEM – Stainless steel	S
HEADLAMPS – Halogen; daytime running lights	S
INSTRUMENTATION – Includes tachometer, trip odometer	S
RADIO – AM stereo*/FM stereo, electronically tuned with digital clock	O
AM stereo*/FM stereo cassette electronically tuned with digital clock	O
SEATS – Bucket, cloth-faced, low-back with dual recliners and adjustable headrests	S
Sport bucket, cloth-faced, high-back with dual recliners	O
Rear, fold-down	S
SEAT BELTS – 3-point shoulder/lap, 2 front and 2 rear; lap, rear centre position	S
SHELF PANEL – Rear, folding	S
STEERING – Manual, rack-and-pinion, 22:1 ratio	S
Power-assisted, 18:1 ratio	O
SUSPENSION – Front Iso-strut, rear semi-independent trailing arm	S
TIRES – Steel-belted radials, All-Season	S
WINDSHIELD WIPERS – Variable-delay, intermittent	S
WIPER/WASHER – Liftgate	S

S – Standard Equipment O – Optional Equipment

*Some AM stereo broadcasting may not be compatible with this radio

MAJOR DIMENSIONS	mm	5-Door in.
Wheelbase	2520	99.1
Overall Length	4145	163.2
Overall Width	1695	66.8
Overall Height	1345	53.0

FRONT-WHEEL-DRIVE ENGINE AND TRANSAXLE	2.2-litre, SOHC EFI 4-cylinder
Transaxle and OTGR* Availability	
5-Speed Manual – Standard	2.55
3-Speed Automatic – Optional	2.78 ^(a)

^(a)With lock-up torque converter for highway fuel efficiency.

SOHC – Single Overhead Camshaft *Overall Top Gear Ratio (OTGR)
EFI – Electronic Fuel Injection

STAYING ABOVE THE CROWD.



aravan, the original mini-van, was a breakthrough in automotive ingenuity. Today, Caravan remains the standard that the others follow. Start with easy-to-handle front-wheel drive, and a clear view of traffic all around. Check the impressive interior space, with the versatility of five- or seven-passenger seating, depending on model. Compare engine availability: fuel-efficient 2.5-litre four-cylinder standard, sporty 2.5-litre Turbo or smooth, responsive 3.0-litre V6 optional. And for even more space than standard-length Caravan, consider Grand Caravan. More legroom, more cargo space. If you start with Caravan quality, you wind up with the best.



DODGE CARAVAN SELECTED STANDARD & OPTIONAL FEATURES

	Caravan	SE	LE	Grand SE	Grand LE
AIR CONDITIONING – Bi-level	O	O	O	O	O
BRAKES – Power-assisted front disc, self-adjusting rear drum with height-sensing valve	S	S	S	S	S
CORROSION PROTECTION – Extensive use of galvanized steel; lower bodyside urethane stone chip-resistant coating	S	S	S	S	S
DEFROSTER – Rear window	O	S	S	S	S
EXHAUST SYSTEM – Stainless steel	S	S	S	S	S
HEADLAMPS – Halogen; daytime running lights	S	S	S	S	S
LUGGAGE RACK – Roof	O	O	S	O	S
PAINT – Two-tone	NA	O	S	O	S
RADIOS – Electronically tuned with digital readout and clock	S	S	S	S	S
AM stereo/FM stereo*	S	S	NA	S	NA
AM stereo/FM stereo cassette*; 4 speakers	O	O	S	O	S
Premium AM stereo/FM stereo with cassette*	NA	O	O	O	O
"Chrysler-Infinity™ II Sound System"*	NA	O	O	O	O
SEATING PACKAGES –					
5-passenger (2 + 3)	S	S	NA	NA	NA
5-passenger (2 + 3), Convert-a-bed	NA	O	O	NA	NA
7-passenger (2 + 2 + 3)	O	O	S	S	S
STEERING – Power-assisted, rack-and-pinion	S	S	S	S	S
TRAILER TOWING – Heavy-duty package (with V6 engine only)	NA	O	O	O	O
WINDSHIELD WIPERS – Variable-delay, intermittent	S	S	S	S	S
WIPER/WASHER – Liftgate window, intermittent	S	S	S	S	S

S – Standard Equipment O – Optional Equipment NA – Not Available
*Some AM stereo broadcasting may not be compatible with this radio.

MAJOR DIMENSIONS	Caravan		Grand Caravan	
	mm	in.	mm	in.
Wheelbase	2845	112.0	3025	119.0
Overall Length	4470	175.9	4840	190.5
Overall Width	1830	72.0	1830	72.0
Overall Height	1640	64.6	1645	64.8

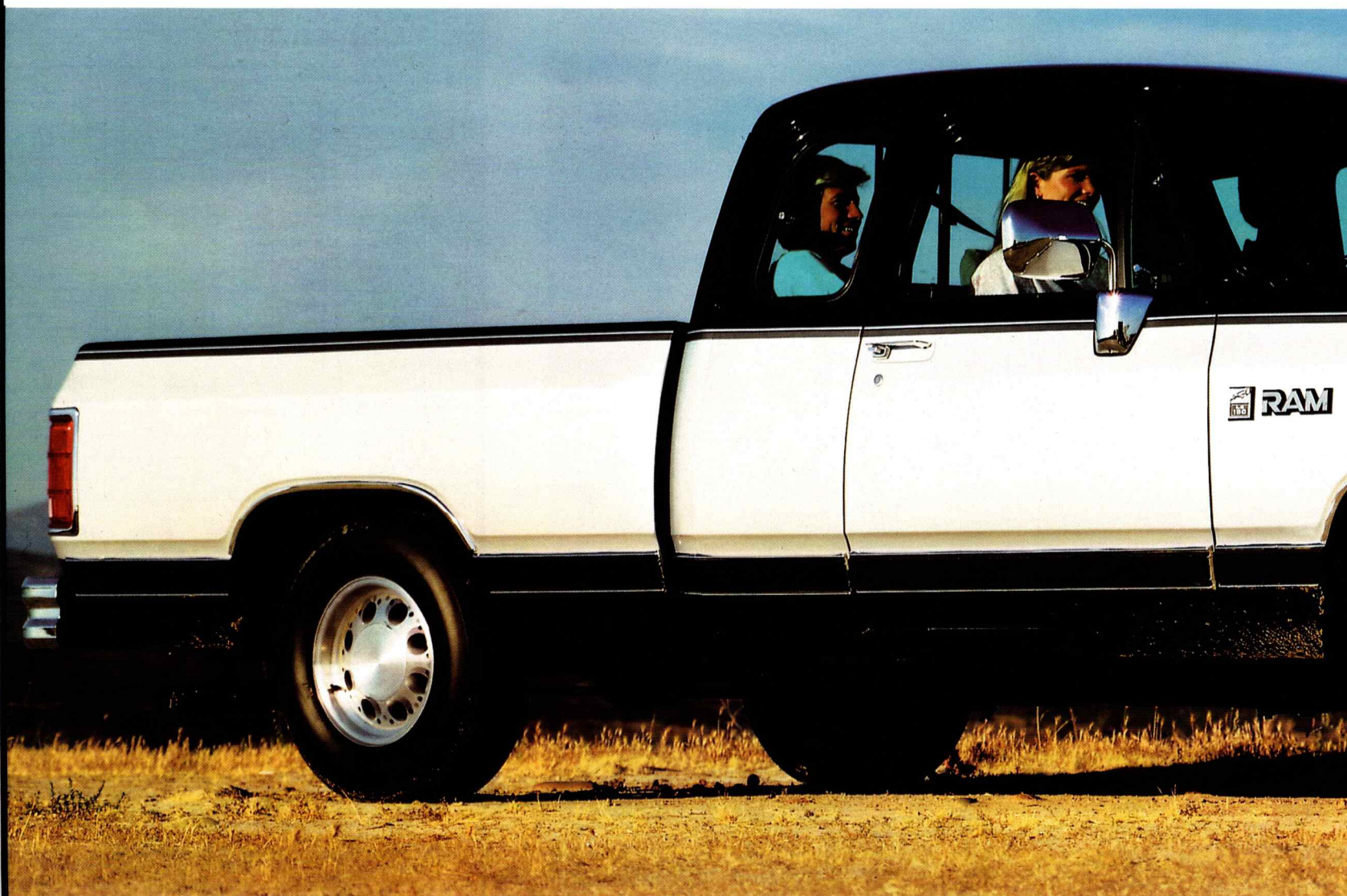
FRONT-WHEEL- DRIVE ENGINES AND TRANSAXLES	2.5-litre 4-cyl. SOHC EFI	2.5-litre Turbo 4-cyl. SOHC EFI	3.0-litre V6+ SOHC x 2 EFI	3.3-litre V6 OHV EFI
	Availability	Availability	Availability	Availability
Caravan	Standard	Optional	NA	NA
Caravan SE/LE	Standard	Optional	Optional	NA
Grand Caravan SE/LE	NA	NA	NA	Standard
Transaxle and OTGR*				
5-Speed Manual – Std.	2.76	2.74	—	—
3-Speed Auto. – Opt.	3.22	3.02	3.02	—
4-Speed Auto. – Opt. Caravan SE/LE	—	—	2.36	—
4-Speed Auto. – Std. Grand Caravan SE/LE	—	—	—	2.36

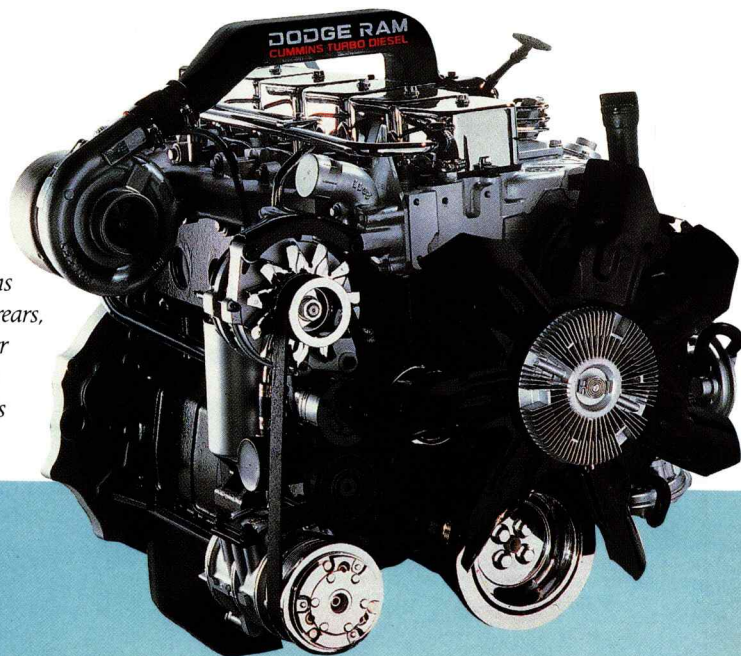
EFI – Electronic Fuel Injection SOHC – Single Overhead Camshaft
OHV – Overhead Valve *Overall Top Gear Ratio (OTGR)
NA – Not Available + Built by Mitsubishi Motors Corporation

RAM TOUGH DODGE PICKUPS.



he Dodge Ram lineup for 1990 includes a whole stable of D-Series two-wheel-drive or W-Series 4x4 full-size pickups. On lighter-duty models, D & W 150 and value-oriented D & W 150S, there's a choice of box sizes: 2.0 m (6 1/2 ft.) or 2.4 m (8 ft.). 150 and 250 models are available in a new Club Cab version that adds two rear jump seats. Payload ratings run the gamut from a standard 720 kg (1590 lb.) on D150S to an optional 2485 kg (5475 lb.) on D350. There's get-tough power, too. A 3.9-litre EFI V6 is standard on D & W 150/150S and D250, with a 5.2-litre EFI V8 optional. D & W 350 offer the standard 5.9-litre EFI V8. And on both 250 and 350 conventional cabs, the Cummins 5.9-litre six-cylinder Turbo Diesel is available as an option.





Equipped with Cummins Turbo Diesel and single rears, D350 is rated for a trailer weight of up to 4945 kg (10,900 lb.). Now that's hauling power!



RAM PICKUPS SELECTED STANDARD AND OPTIONAL FEATURES

2WD
4x4
PICKUPS

AIR CONDITIONING	O
BRAKES – Power-assisted, front disc, rear drum. Rear anti-lock system	S
CORROSION PROTECTION – Extensive use of galvanized steel; lower bodyside urethane stone chip-resistant coating. Stainless steel exhaust.	S
FUEL TANK – 83 L (18.3 Imp. gal.); 114 L (25.0 Imp. gal.) optional	S
GLASS – Tinted, all windows	S
HEADLAMPS – Halogen; Daytime running lights	S
MIRRORS – Outside, dual 5" x 7" (6" x 9" optional)	S
PACKAGES – SELECTED: SE & LE Decor; Trailer Tow Prep; Snowplow Prep (4x4)	O
RADIO – AM stereo*/FM stereo, electronically tuned with 2 speakers, digital clock (cassette optional)	S
SEATS – Bench, 3-passenger, vinyl (deluxe/premium cloth optional)	S
Club Cab only: Reclining front buckets, cloth/rear jump seats (2)	O
SEAT BELTS – Shoulder/lap, front outboard (2); lap, centre front and Club Cab rear	S
STEERING – Power-assisted	S

S – Standard Equipment O – Optional Equipment at extra cost
*Some AM stereo broadcasting may not be compatible with this radio.

SELECTED SPECIFICATIONS		Conventional	Conventional	Club	Club
Wheelbase	mm	2920	3325	3380	3785
	in.	115	131	133	149
Box Length	ft.	6 1/2	8	6 1/2	8
Model Availability		150/150S	All	150 2WD	150/250
Overall Length	mm	4845	5355	5305	5810
	in.	190.8	210.8	208.8	228.8
Payload Range*:					
	Minimum	kg	720	670	850
		lb.	1590	1475	1875
	Maximum	kg	850	2485	—
GVWR Range:					
	Minimum	kg	2360	2360	2720
		lb.	5200	5200	6000
	Maximum	kg	2495	4580	—
	(Optional)	lb.	5500	10100	—

*Reduce payload by weight of occupants and added/optional equipment.

ENGINES	TRANSMISSIONS	150S/150	250	350
3.9 L (239 CID) V6 EFI	5-Speed Manual OD	S ⁽¹⁾	NA	NA
3.9 L (239 CID) V6 EFI	4-Speed Manual (NP435) HD	O ⁽²⁾	S ⁽³⁾	NA
3.9 L (239 CID) V6 EFI	3-Speed Automatic	O ⁽¹⁾	O ⁽¹⁾	NA
3.9 L (239 CID) V6 EFI	4-Speed Automatic OD	O ⁽⁴⁾	NA	NA
5.2 L (318 CID) V8 EFI	4-Speed Manual OD	O ⁽¹⁾	NA	NA
5.2 L (318 CID) V8 EFI	4-Speed Manual (NP435) HD	O ⁽⁵⁾	O ⁽⁵⁾	NA
	3-Speed Automatic	O ⁽¹⁾	NA	NA
	4-Speed Automatic OD	O	O	NA
5.9 L (360 CID) V8 EFI	4-Speed Manual (NP435) HD	O	O	S
	4-Speed Automatic OD	O	O	O
5.9 L (360 CID) Cummins I-6 Diesel	5-Speed Manual OD	NA	O ⁽⁶⁾	O
	3-Speed Automatic	NA	O ⁽⁶⁾	O

S – Standard Equipment O – Optional Equipment at extra cost NA – Not available

EFI – Electronic Fuel Injection OD – With Overdrive HD – Heavy Duty

(1)Except Club Cabs and 4x4. (2)Except Club Cabs, standard W150S/W150 4x4 except Club Cab.

(3)Except Club Cabs and W250 4x4. (4)Available on W150S/W150 4x4 only.

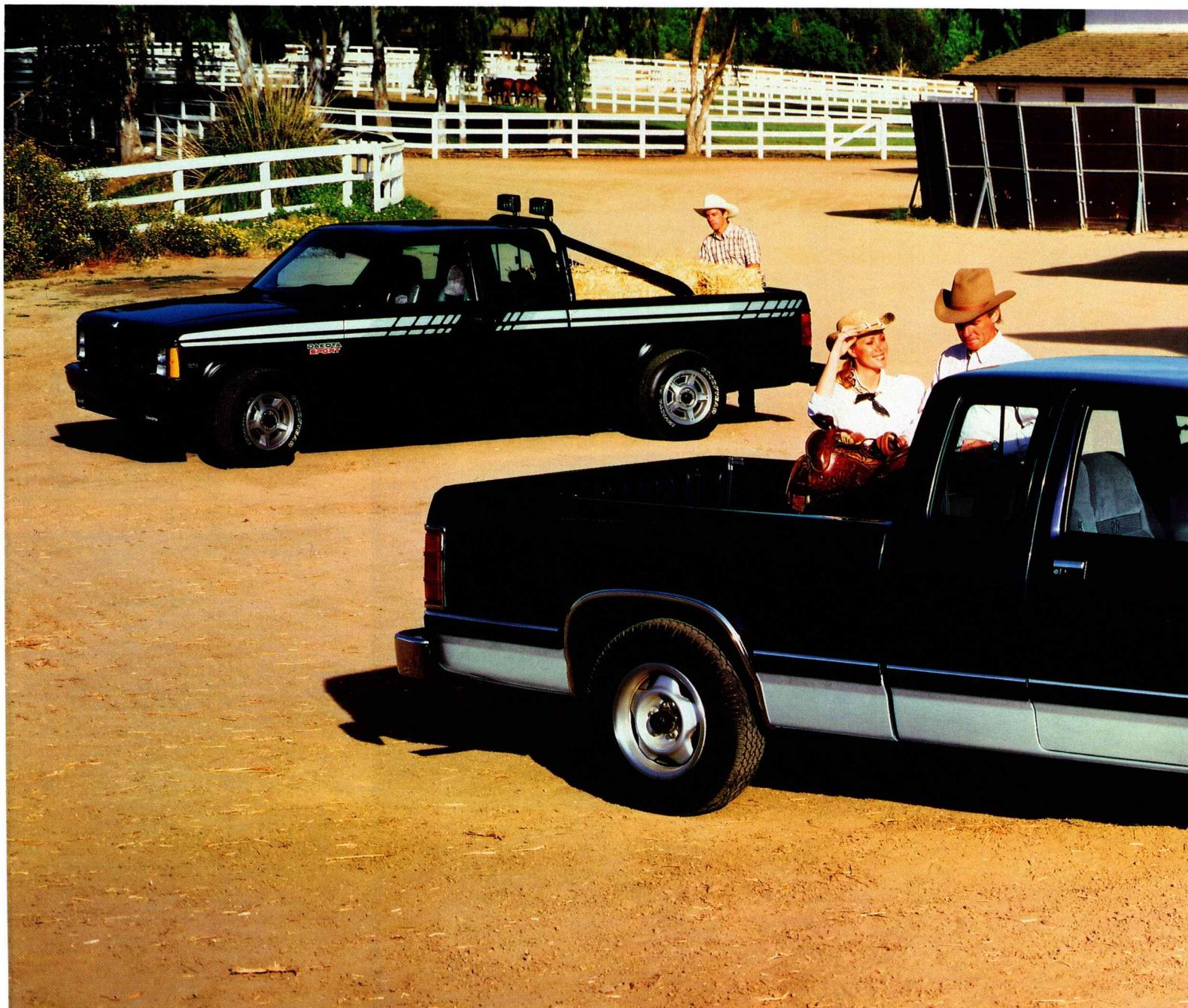
(5)Standard on Club Cabs and W250 4x4 Conventional Cab. (6)Except Club Cabs.

DURABLE, VERSATILE, DAKOTA.

D

akota offers work-hard, play-hard versatility. There's two-wheel drive or 4x4. There's a 2.0 m (6.5 ft.) box or a 2.4 m (8 ft.) box that has false-floor provision for flat-loading 4' x 8' sheets.

There's optional payload capability of 905 kg (2000 lb.) on 4x4, 1155 kg (2550 lb.) on two-wheel drive. Club Cab models feature a full fold-up 60/40 split rear cushioned bench seat. Dakota two-wheel-drive Chassis Cab is available for conversion. And now there's Dakota Convertible.





DAKOTA SELECTED STANDARD AND OPTIONAL FEATURES

	2WD/4WD Conventional Convertible Club
AIR CONDITIONING – Bi-level	O
BRAKES – Power-assisted vented front disc, rear drum. Anti-lock rear brake system	S
CORROSION PROTECTION – Extensive use of galvanized steel; lower bodyside urethane stone chip-resistant coating	S
EXHAUST SYSTEM – Stainless steel for extended life	S
FUEL TANK – 57 L (12.5 Imp. gal.)	S
83 L (18.3 Imp. gal.)	O
GLASS – Tinted	S
MIRRORS – Outside, dual 5"x7" (6"x9" optional)	S
PACKAGES – SELECTED: SE & LE Decor; Trailer Tow Prep; Snowplow Prep (4x4)	O
RADIO – AM stereo*/FM stereo electronically tuned with digital clock (cassette optional)	S
SEATS – Conventional Cab/Convertible: 3-passenger bench, vinyl (Deluxe/Premium cloth optional)	S
Club: 60/40 split bench, vinyl (Deluxe/Premium cloth optional)	S
Club: Rear 60/40 Flip-up (seats 3)	O
Sport (optional Club): Reclining cloth buckets	S
STEERING – 2WD manual, rack-and-pinion	S
4WD power-assisted	S
SUSPENSION – Front, independent coil springs (torsion bars, 4WD)	S

S – Standard Equipment O – Optional Equipment

*Some AM stereo broadcasting may not be compatible with this radio.

SELECTED SPECIFICATIONS		Conventional & Convertible	Conventional	Club
Wheelbase	mm	2840	3150	3325
	in.	112	124	131
Box Length	ft.	6 1/2	8	6 1/2
Model/Drive Availability		Base 2WD and 4x4 ⁽¹⁾	Base 2WD and 4x4	Base 2WD
		Sport 2WD and 4x4		Sport 2WD
Overall Length	mm	4720	5190	5205
	in.	185.9	204.4	204.9
Payload Range ⁽²⁾				
Minimum	kg	565	565	660
	lb.	1250	1250	1450
Maximum	kg	1155	1155	905
(Optional)	lb.	2550	2550	2000
GVWR Range				
Minimum	kg	1925	1955	2155
	lb.	4240	4310	4750
Maximum	kg	2675	2725	2545
(Optional)	lb.	5900	6010	5610

(1)Convertible with 4x4 is available as Sport Model only.

(2)Reduce payload by weight of occupants and added/optional equipment.

POWERTRAINS	Engine	Transmission
2WD – Standard	2.5 L EFI 4-cyl.	5-spd. manual overdrive
– Optional	3.9 L EFI V6	5-spd. manual overdrive 4-spd. automatic overdrive
4WD – Standard	3.9 L EFI V6	5-spd. manual overdrive with 2-spd. transfer case
– Optional		4-spd. automatic overdrive with 2-spd. transfer case

DODGE RAMCHARGER.

RAMCHARGER SELECTED STANDARD AND OPTIONAL FEATURES

AD150/AW150
2WD/4WD

AIR CONDITIONING	O
BRAKES – Front disc, rear drum with anti-lock system	S
BUMPERS – Front and rear, bright	S
CORROSION PROTECTION – Extensive use of galvanized steel; lower bodyside urethane stone chip-resistant coating	S
DAYTIME RUNNING LIGHTS	S
ENGINE BLOCK HEATER	S
GLASS – Tinted, all windows	S
HEADLINER – Deluxe, full soft cloth	S
MIRRORS – Inside, 10", day/night	S
Outside, dual	S
PACKAGES – SELECTED: LE Decor; Trailer Tow Prep; Snowplow Prep (4x4)	O
RADIOS – AM stereo */FM stereo	S
AM stereo */FM stereo cassette	O
ROOF VENT	S
SEATS – Front bucket, high-back, vinyl	S
Front bucket, high-back, cloth-and-vinyl	O
Rear bench, 3-passenger (folds forward for cargo carrying)	S
SKID PLATES – Fuel tank	O
Transfer case (4WD only)	O
STEERING – Power-assisted	S

S – Standard Equipment O – Optional Equipment

*Some AM stereo broadcasting may not be compatible with this radio.

RAMCHARGER SPECIFICATIONS

AD150
2-Wheel Drive

AW150
4-Wheel Drive

STANDARD – PAYLOAD	605 kg	1335 lb.	620 kg	1365 lb.
GVWR	2540 kg	5600 lb.	2720 kg	6000 lb.
Optional – Payload	–	–	795 kg	1755 lb.
GVWR	–	–	2900 kg	6400 lb.
ENGINES – Standard	5.2 L (318 CID) V8 electronic fuel injection			
Optional	5.9 L (360 CID) V8 electronic fuel injection			

MAJOR DIMENSIONS

AD150/AW150
2WD/4WD

Wheelbase	2690 mm	106.0 in.
Overall – Length	4690 mm	184.6 in.
Overall – Width	2020 mm	79.5 in.
Overall – Height	1770 mm/1855 mm	69.7 in./73.0 in.

Suitably equipped, two-wheel-drive Ramcharger can haul up to 3447 kg (7600 lb.) of boat or trailer.



Full-size sport utility. Two-wheel-drive or 4x4 adventure with seating for five. Standard 5.2-litre EFI V8 engine delivers solid performance on a freeway or a backwoods trail. With optional 5.9-litre EFI V8 engine, both models offer great versatility in trailer towing.

RAM 50 TWO-WHEEL DRIVE.

Ram 50 is the Dodge contender in the field of compact imports. Owners appreciate the support of the Chrysler Canada dealer network plus the economy, nimble handling and compact dimensions of this practical workmate. Ram 50 models let you choose a 2670 mm (105.1 in.) wheelbase with 1.8 m (6 ft.) box or a 2950 mm (116.1 in.) wheelbase with a 2.2 m (7.25 ft.) box, the latter available with a 905 kg (2000 lb.) payload package. Also offered is Ram 50 SE, with special exterior and interior features that result in a practical small truck with a decidedly luxurious side to its character.

Shown is Dodge Ram 50 SE shortbed with aftermarket rear window louvres and rear bumper.



Dodge Ram 50 shortbed is equipped with a 2.4-litre Multi-point fuel-injected four-cylinder engine and 14" styled steel wheels standard.



RAM 50 PICKUPS SELECTED STANDARD AND OPTIONAL EQUIPMENT	Ram 50 SWB & LWB
BUMPERS – Rear, step-type (black on Ram 50, chrome on SE)	O
CORROSION PROTECTION – 5-year Limited Warranty	S
EXHAUST SYSTEM – Stainless steel for extended life	S
LIGHT – Cargo	O
MIRRORS – Inside, rearview, day/night	O
Outside, dual, black	S
PACKAGE – 905 kg (2000 lb.) payload	O
SEATS – Bench, with 2 headrests, cloth-and-vinyl	S
STEERING – Power-assisted	O
STEERING COLUMN – Tilt	S
WINDSHIELD WIPER/WASHER – 2-speed	S

S – Standard Equipment O – Optional Equipment at extra cost
SWB – Short wheelbase LWB – Long wheelbase

SPECIFICATIONS		Short Wheelbase	Long Wheelbase
Standard – Payload	kg	730	715/905
	lb.	1610	1580/2000
Standard – GVWR	kg	1890	1955/2220
	lb.	4165	4315/4895
Brakes: Front	Power-assisted disc		
Engine	2.4-litre Multi-point fuel injection, 4-cylinder		
Transmissions: Standard	5-speed		
Optional (Automatic)	4-speed		

MAJOR DIMENSIONS		Short Wheelbase		Long Wheelbase	
		mm	in.	mm	in.
Wheelbase	– 6-foot Box	2670	105.1	—	—
	– 7¼-foot Box	—	—	2950	116.1
Overall Length	– 6-foot Box	4490	176.9	—	—
	– 7¼-foot Box	—	—	4915	193.5
Overall Width		1655	65.1	1655	65.1
Overall Height		1545	60.8	1545	60.8

BUILT FOR HARD LIVING.



edge Ram Vans take on the big jobs with confidence. There's cargo space from 6985 L (246.7 cu.ft.) up to 8622 L (304.5 cu.ft.). Wheelbases of 2780 mm (109.6 in.) and 3240 mm (127.6 in.), payloads up to 2005 kg (4425 lb.). Caravan C/V offers front-wheel drive, power steering, plus front and rear gas-charged shocks for excellent driving comfort and handling ease. Choose between long or short wheelbase. There's a wide range of engines, from a 2.5-litre balance shaft four-cylinder to a 3.3-litre V6 with four-speed overdrive automatic transaxle.



CARAVAN C/V AND RAM VANS SELECTED STANDARD AND OPTIONAL FEATURES

	CARAVAN C/V	RAM VANS
AIR CONDITIONING	O	O
BRAKES – Power-assisted front disc, rear drum; Rear anti-lock system (exc. Caravan C/V)	S	S
CORROSION PROTECTION – Extensive use of galvanized steel; lower bodyside urethane stone chip-resistant coating (Caravan C/V)	S	S
ENGINE BLOCK HEATER	S	S
EXHAUST SYSTEM – Stainless steel for extended life	S	S
FUEL TANK – 76 L (16.7 Imp. gal.)	S	NA
83 L (18.3 Imp. gal.)	NA	S
GLASS – Tinted, all windows	S	O
HEADLAMPS – Halogen; daytime running lights	S	S
MIRRORS – Outside, dual	S	S
PACKAGES – Royal Decor/LE Decor	O	NA
Turbo Sport (112" wheelbase)	O	NA
Van Conversion	O	O
POWER ASSISTS – Liftgate release	O	NA
Steering, brakes	S	S
RADIOS – AM stereo*/FM stereo electronically tuned, digital clock	S	S
SEATS – Vinyl trim (cloth optional)	S	S
SPEED CONTROL – Electronic; STEERING COLUMN – Tilt	O	O
WHEELS – Styled steel/cast aluminum	O	O
WINDSHIELD WIPERS – Variable-delay intermittent	S	O
WIPER/WASHER – Liftgate glass; fixed-delay intermittent	O	NA

S – Standard Equipment O – Optional Equipment at extra cost NA – Not Available
*Some AM stereo broadcasting may not be compatible with this radio.

VAN SPECIFICATIONS	CARAVAN C/V		RAM VANS	
	mm	in.	mm	in.
Wheelbase – Short	2845	112.0	2780	109.6
– Long	3025	119.1	3240	127.6
Length – Short w/b	4470	175.9	4545	178.9
– Long w/b	4840	190.5	5000	196.9
– Maxi	—	—	5660	222.9
Width	1835	72.0	2025	79.8
Payload* – Minimum	550 kg	1215 lb.	550 kg	1215 lb.
– Maximum	905 kg	2005 lb.	2005 kg	4425 lb.
GVWR – Minimum	1845 kg	4070 lb.	2270 kg	5000 lb.
– Maximum	2225 kg	4910 lb.	4080 kg	9000 lb.

*Reduce by weight of occupants and added/optional equipment.

POWER- TRAINS	CARAVAN C/V		RAM VANS		
	112" WB	119.1" WB	B150	B250	B350
Engine Standard	2.5 L EFI 4-cyl.	3.3 L MPI V6	3.9 L EFI V6	3.9 L EFI V6	5.2 L EFI V8
Optional	2.5 L Turbo I MPI 4-cyl.	—	5.2 L EFI V8	5.2 L EFI V8	5.9 L EFI V8
Optional	3.0 L MPI V6	—	—	5.9 L EFI V8	—
Transmission Standard	5-Spd Manual OD	4-Spd Auto OD	5-Spd Manual OD	5 Spd Manual OD	4-Spd Auto OD
Optional	3-Spd Auto	—	3-Spd Auto	3-Spd Auto	—
Optional	4-Spd Auto OD	—	4-Spd Auto OD	4-Spd Auto OD	—

PERSONAL ENTERPRISE.



For size, versatility and built-in quality that translates into many long years of faithful service, Ram Wagon is the choice. Available as regular Wagon or Maxiwagon, B250 and B350 share a 3240-mm (127.6-in.) wheelbase. Maxi is the ultimate space craft, with optional seating for 8, 12, or 15 in B350. Standard on B150 and B250 is a 3.9-litre EFI V6. Standard B350 power plant is a 5.2-litre EFI V8; optional on B250 and B350 is a 5.9-litre EFI V8 for optimum carrying and trailer-towing power. All Ram Wagons are backed by Dodge Truck's exclusive 7/115 powertrain and 7/160 corrosion protection plans.*

*See dealer for details.



RAM WAGONS SELECTED STANDARD AND OPTIONAL FEATURES

**B150, B250,
B250 MAXI,
B350,
B350 MAXI**

AIR CONDITIONING (Also auxiliary rear on B250 and B350 Wagons)	O
BRAKES – Power-assisted front disc, rear drum; rear anti-lock system	S
CONSOLE – Front, includes compartments, cup and coin holders	O
CORROSION PROTECTION – Extensive use of galvanized steel; lower bodyside urethane stone chip-resistant coating	S
DOORS AND GLASS – Side, dual hinged (Single sliding, optional)	S
Rear, single hinged (Dual hinged, optional)	S
EXHAUST SYSTEM – Stainless steel for extended life	S
FUEL TANK – 83 L (18.3 Imp. gal.)	S
132 L (29 Imp. gal.)	O
HEADLAMPS – Halogen; daytime running lights	S
MIRRORS – Outside, 5" x 7" (6" x 9" optional)	S
PACKAGES – Heavy-Duty Trailer Tow (NA B150)	O
LE Decor	O
POWER ASSISTS – Steering, brakes	S
Door locks, front and side; window, front door	O
RADIO – AM stereo*/FM stereo electronically tuned, digital clock	S
SEATS – 5 passenger, vinyl trim	S
Cloth upholstery (in LE Decor Package)	O
8, 12, 15 Seating (availability varies by model)	O
SPEED CONTROL – Electronic; STEERING COLUMN – Tilt	O
WINDSHIELD WIPERS – Variable-delay intermittent	O

S – Standard Equipment O – Optional Equipment at extra cost
*Some AM stereo broadcasting may not be compatible with this radio.

WAGON SPECIFICATIONS	B150 Wagon mm	B150 Wagon in.	B150/B250/B350 Wagon mm	B150/B250/B350 Wagon in.
Wheelbase	2870	109.6	3240	127.6
Overall Length	4544	178.9	5001/ 5662*	196.9/ 229.9*
Overall Width	2027	79.8	2027	79.8
Payload** – Minimum	590 kg	1305 lb.	825/ 835* kg	1820/ 1840* lb.
– Maximum	890 kg	1960 lb.	1735/ 1635* kg	3825/ 3600* lb.

*Maxiwagon **Reduce by weight of occupants and added/optional equipment.

POWERTRAINS	B150	B250	B350
Engines:			
3.9 L (239 CID) EFI V6	S	S	NA
5.2 L (318 CID) EFI V8	O	O	S
5.9 L (360 CID) EFI V8	NA	O	O
Transmissions:			
Standard	5-Spd. Manual (OD)	5-Spd. Manual	3-Spd. Auto. (OD)
Optional	3-Spd. Auto.	3-Spd. Auto.	4-Spd. Auto. (OD)
Optional	4-Spd. Auto. (OD)	4-Spd. Auto. (OD)	NA

EFI – Electronic Fuel Injection OD – Overdrive 5th/High

Specifications, descriptions and illustrative material contained herein are based on authorized information. Although specifications, descriptions and illustrations were believed to be correct at the time this publication was approved for printing, accuracy cannot be guaranteed. Chrysler Canada Ltd. reserves the right to discontinue models or options at any time or change specifications and materials, equipment or design without notice and without incurring obligation.

Some equipment may not be exactly as illustrated in this publication. Some of the illustrative material contained herein may show equipment that is not standard and is available only at extra cost. Equipment referred to as available or optional may be at extra cost. Some options are required in combination with other options. For the price of the model with the equipment you desire or verification of specifications and equipment availability contained herein, see your Chrysler Canada Ltd. Dealer.

Some of the items shown on vehicles in this publication may be available only through retail organizations and establishments not connected with Chrysler Canada Ltd. Availability, price, quality and durability of these items rests solely with the respective manufacturers and their sales organizations, and Chrysler Canada Ltd. assumes no responsibility for their availability or their use.

WARRANTY COVERAGE THAT SPELLS CONFIDENCE

On Chrysler Canada's North-American-built cars, family wagons, trucks, and vans, upon expiration of the 12-month or 20,000-kilometre Basic Warranty, the Powertrain Warranty extends coverage up to 7 years or 115,000 kilometres*, (7 years or 160,000 kilometres for truck diesel engines.) The Corrosion Warranty covers body sheet metal against rust-through for 3 years (regardless of distance driven) and outer body panels are covered up to 7 years or 160,000 kilometres. See your Dealer for full details.

On Chrysler Canada's Colt 100, 200 and Ram 50 pickup models upon expiration of the 3-year or 60,000-kilometre Basic Warranty, powertrain coverage continues up to 3 years or 80,000 kilometres. At the same time, the Corrosion Warranty covers body sheet metal against rust-through for 3 years (regardless of distance driven); the Corrosion Warranty also covers outer body panels against rust-through for 5 years, regardless of distance driven, on Colt 100 and Ram 50 and for 7 years or 160,000 kilometres on Colt 200. See your Dealer for full details.

*A deductible may apply.

LEASING — Any Chrysler, Dodge or Plymouth car or Dodge truck can be leased from your local Chrysler Dealer — The Leasing Professional.




Proud sponsor
of the
National
Hockey League



Physically
Challenged
Assistance
Program

520-0-C-278E

PRINTED IN CANADA

CHRYSLER CANADA 
Changing the landscape.