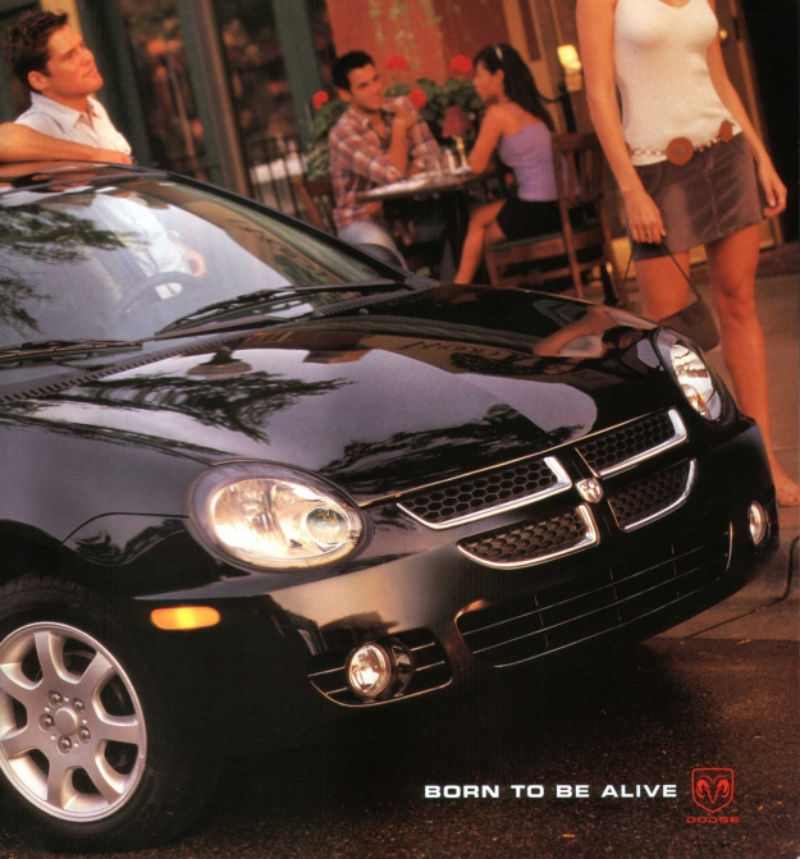


2004 DODGE SX 2.0



BORN TO BE ALIVE



A POWERFUL BOOST TO YOUR SX APPEAL.

It's fast. Fun to drive. Looks hot. Sounds cool. And it has a ton of standard features. Plus there is a great menu of à la carte options that let you add even more performance and eye candy to the deal. It's also efficient, packed with state-of-the-art safety engineering and extremely affordable. Bottom line: if you're looking for a ride that's designed from the ground up to suit your style, you're in the right place. The sporty, leave-the-losers-behind Dodge SX 2.0 for 2004. The SX of your dreams has arrived.

»» For more information, visit dodge.ca





Dodge SX 2.0 shown in Flame Red.

LIFE MOVES FAST. YOUR CAR SHOULD TOO.

Part of the fun of driving is having lots of power under the hood. Dodge SX 2.0 delivers – big time, starting with a standard 2.0-litre, 132-horsepower engine hooked up to your choice of a five-speed manual or optional four-speed automatic. Think you can handle more? Then kick it up a notch and go for the High-Output version with a special Performance-geared five-speed manual transmission. Let's just say this combo rocks and leave the rest for your test drive. To learn more about Dodge SX 2.0 performance, just cruise on over to dodge.ca

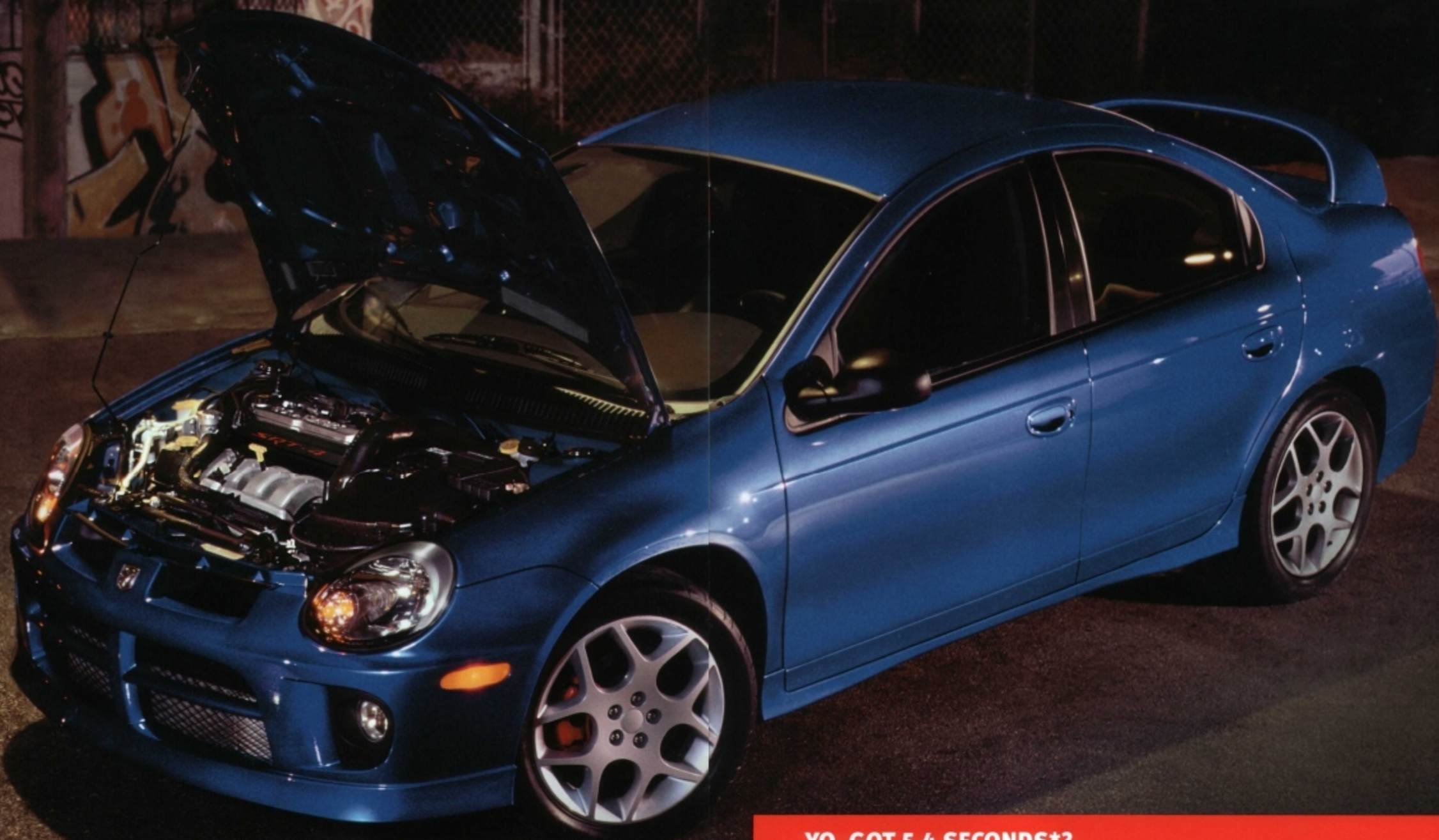
»» For more information, visit dodge.ca

The standard five-speed manual transmission not only provides enhanced fuel economy, but it also makes SX 2.0 a real blast to drive. >>



The specially tuned High-Output version of the 2.0-litre engine uses tricks like an active variable venturi intake manifold, a high-speed controller for spark advance and fuel injection, a performance camshaft and bumped-up compression to crank out a road-ripping 150 horsepower. >>





YO, GOT 5.4 SECONDS*?

That's all you'll need to reach highway speed in the incredible new Dodge SRT-4. What makes this the second fastest Dodge next to Viper? How 'bout an intercooled turbocharger that pumps up to 15 pounds of boost into a 2.4-litre DOHC engine to produce an incredible 230 horsepower. A limited-slip differential and Z-rated tires on 17-inch wheels combine with performance suspension and braking systems to deliver serious handling ability. From the cool Satin-Silver shift knob to the heavy-duty clutch, Dodge SRT-4 is a real screamer. Availability of a model this hot is limited, so check with your retailer before you clear a spot in the garage for this rocket.

*Source: Motor Trend, issue date June 2003.

»» For more information, visit dodge.ca



« The 60/40 split-folding rear seatbacks are perfect for longer things like guitars or snow boards. You can lower one section at a time to maintain a rear passenger seat or you can lower both for maximum cargo capacity.* There's also a huge trunk with 371 litres (13.1 cubic feet) of space, a convenient light and even an available remote trunk release – great when your hands are full.

*Remember to properly secure all cargo.

UP FOR ANYTHING.

Sure there are things you can't always control: your job, your friends, your significant other. But with Dodge SX 2.0, you're in total control of everything from the tunes to the temperature to the interior configuration. It's smart engineering that's up for anything – just like you.

» For more information, visit dodge.ca

SMART CHOICE.

One of the most seductive parts about Dodge SX 2.0 is its sweet value. It begins with a huge list of standard features including power steering and power brakes, a kickin' stereo (see at right), split-folding rear seatbacks, tinted glass, fog lamps, even a Sentry Key™ Engine Immobilizer security system. Of course, you can get a ton of great à la carte options too. And best of all, whatever cool stuff you put on yours, every Dodge SX 2.0 comes with our 7-year/115,000-kilometre Powertrain Warranty* and 24-hour roadside assistance.*

» For more information, visit dodge.ca



« Nothing adds to a drive like a great sound track. That's why every Dodge SX 2.0 comes with a sound system that includes an AM/FM stereo radio with CD player, CD changer controls and six speakers. If you're really into your tunes, you can crank it up a notch with an optional system that adds a six-disc in-dash CD changer.



« Our 7-year/115,000-kilometre Powertrain Warranty* covers the hardest-working parts of your Dodge SX 2.0. Factor in our 3-year or 60,000-kilometre* Bumper-to-Bumper Basic Warranty and you've got protection you can really count on. In addition, DaimlerChrysler Canada will provide a 24-hour roadside assistance plan for 7 years or 115,000 kilometres.* And it's all fully transferable.

*Whichever comes first. Some conditions, including a deductible, may apply. See your retailer for complete details.



FOGEDDABOUTIT.

Safety. It's one of those things that you want to feel confident is there, and then forget about. Well you can, because Dodge SX 2.0 is engineered with some outstanding safety features. Next-Generation driver and front-passenger air bags* are standard. You can also get the extra peace of mind of optional supplemental side air bags.* You'll find high-tech seat belt retractors, height adjustable front shoulder belts, even built-in child-seat tether anchors. So wherever you're headed, Dodge SX 2.0 lets you relax, drive and enjoy all the way.

*Certified to federal regulations that allow less forceful front air bags. Always use seat belts. Children 12 and under should always be in a back seat correctly using an infant or child restraint system, or the seat belt properly positioned for the child's age and size.

»» For more information, visit dodge.ca

Available four-wheel
disc anti-lock brakes
deliver surefooted
stopping power, while
enhancing your ability
to steer and maintain
control in extreme
braking situations.



STANDARD FEATURES AND OPTIONS

All Dodge SX 2.0 models include:

Air Bags* – Next-Generation, driver and front-passenger

Brake-Park Interlock – Cannot shift out of Park unless brake pedal is depressed (automatic transmission)

Child-Seat Anchor System (LATCH) – Lower Anchors and upper Tether anchors for Child seats

Clutch-Starter Interlock – Cannot start engine until clutch is depressed (manual transmission)

Coat Hooks – Rear (2)

Console – Floor – Storage armrest, cup holders, coin holder, front cubby box, cassette and CD storage, tissue pack holder and integral cup holder for rear-seat passengers

Cup Holders – Front (3); rear (1)

Defroster – Rear window, electric

Door Locks – Rear, child-protection

Engine Block Heater

Exhaust System – Long-life stainless steel

Fascias, Door Handles, Bodyside Moulding

– Body-colour

Fog Lamps – Front

Fuel Tank – 47-litre (10.4 Imp. gal.)

Glass – Tinted, all windows including solar-control windshield

Glove Box – With integral pen and tire-pressure gauge holder

Grille – With chrome accents on Base and Sport, body-colour on R/T

Instrument Cluster – Speedometer, tachometer, odometer, trip odometer, fuel and engine temperature gauges and low-fuel warning light

Lighting

– Exterior – Halogen headlamps

– Interior – Dome with theatre-dimming feature, trunk lamp

Map Pockets – Front doors

Mirrors

– Exterior – Driver's side remote, passenger's side manual

– Interior – Day/night, rearview

– Dual visor-mounted vanity

Power Accessory Outlet – 12-volt, located in instrument panel

Seating – 60/40 split-folding rear seatbacks

Sentry Key™ Engine Immobilizer – With 2 encoded keys

Shoulder Belts

– Front – Height-adjustable outboard with travelling buckles

– Rear – 3-point lap/shoulder for all rear-seat passengers

Speakers – Radio, 6

Steering – Power, rack-and-pinion (performance-tuned on R/T)

Steering Column – Tilt

Suspension

– Front – Independent MacPherson struts with stabilizer bar

– Rear – Independent multi-link

Tire – Spare, compact

Trunk-Lid Release – Emergency inside-trunk glow-in-the-dark release

Wiper System – Windshield, 2-speed with variable intermittent mode and mist

*Certified to federal regulations that allow less forceful front air bags. Always use seat belts. Children 12 and under should always be in a back seat correctly using an infant or child restraint system, or the seat belt properly positioned for the child's age and size.

SX 2.0 FEATURES, PACKAGES AND OPTION GROUPS

Engine/Transmission

– 2.0L 4-cylinder SOHC 16V SMPI – 5-speed manual

– 2.0L 4-cylinder SOHC 16V SMPI – 4-speed automatic

– 2.0L 4-cylinder SOHC 16V SMPI High-Output with active variable-venturi intake manifold, tuned exhaust manifold, high-speed engine controller defining ignition and fuel injector characteristics, performance camshaft, 9.8:1 compression ratio – 5-speed performance manual

Air Bags* – Supplemental side for front occupants

Air Conditioning

Assist Handles – Overhead for front and rear outboard passengers (included with Sport Group or Power Sunroof Group)

Brakes

– Power-assisted front disc/rear drum

– 4-wheel disc anti-lock (Anti-Lock Brake Group)

Door Locks – Power with automatic central locking and programmable rolling autolock (included in Security Group or Driver Convenience Group)

Driver Convenience Group – Includes dual, power, exterior mirrors, Remote Keyless Entry, power trunk-lid release, power door locks and power front windows

Exhaust Tips – Dual, bright

Grille – With chrome accents on Base and Sport, body-colour on R/T

Instrument Panel Centre Bezel

– Dark Grey, textured appearance

– Body-colour (Satin Silver with Black exterior)

Mirrors

– Exterior – Dual, power (included with Driver Convenience Group)

– Interior – With reading lamps (included with power sunroof on Base SX 2.0)

– Interior – With reading lamps and compass and ambient temperature read-out (included only with Leather Interior Group)

Power Sunroof – Includes express-open and vent features, sliding sunshade, and assist handles (adds mirror-mounted reading lamps on Base SX 2.0)

Power Trunk-Lid Release – (Included with Driver Convenience Group and Security Group on Base SX 2.0)

Remote Keyless Entry – Controls for door locks, panic alarm, and trunk release. Includes 2 transmitters (included in Security Group or Driver Convenience Group)

	PACKAGES		
	SX 2.0	SX 2.0 Sport	SX 2.0 R/T
Engine/Transmission	21D	21G	
	24D	24G	
			25H
Air Bags*	O	O	O
Air Conditioning	O	■	■
Assist Handles	P	P	P
Brakes			
– Power-assisted front disc/rear drum	■	■	
– 4-wheel disc anti-lock (Anti-Lock Brake Group)	O	O	■
Door Locks	P	■	■
Driver Convenience Group	O	■	■
Exhaust Tips			■
Grille	■	■	■
Instrument Panel Centre Bezel			
– Dark Grey, textured appearance	■		
– Body-colour (Satin Silver with Black exterior)		■	■
Mirrors			
– Exterior – Dual, power (included with Driver Convenience Group)	P	■	■
– Interior – With reading lamps (included with power sunroof on Base SX 2.0)	P	■	■
– Interior – With reading lamps and compass and ambient temperature read-out (included only with Leather Interior Group)		P	P
Power Sunroof	O	O	O
Power Trunk-Lid Release	P	■	■
Remote Keyless Entry	P	■	■

(Cont'd)

Seats

– Deluxe cloth-faced low-back buckets with 2-way adjustable locking head restraints

– Premium cloth-faced low-back buckets with 2-way adjustable locking head restraints

– Leather-faced low-back buckets (included with Leather Interior Group)

Security Alarm – Security system monitors doors, trunk-key cylinder and ignition

Security Group – Remote Keyless Entry, power door locks, remote, power trunk release

Sound System

– AM/FM stereo with CD player, CD changer controls and 6 speakers

– AM/FM stereo with cassette, CD changer controls, 6-disc in-dash CD changer

Speed Control – Electronic with steering-wheel-stalk-mounted controls

Spoiler – Trunk-lid-mounted (also side-sill spoiler on R/T)

Steering

– Power rack-and-pinion

– Performance-tuned

Steering Wheel and Shift Knob – Leather-wrapped

Suspension – Sport

Wheels and Tires

– 14-inch steel with bolt-on wheel covers, P175/70R14 BSW All-Season Touring tires

– 15-inch aluminum wheels, P185/60R15 BSW All-Season Touring tires

– 15-inch chrome aluminum wheels, P185/60R15 BSW All-Season Touring tires

– 16-inch aluminum wheels, P195/50R16 BSW All-Season Performance tires

Windows – Front, power (included in Driver Convenience Group)

■ – Included P – Packaged with optional group noted O – Optional *Always use seat belts. Children 12 and under should always be in a back seat correctly using an infant or child restraint system, or the seat belt properly positioned for the child's age and size. Sentry Key is a trademark of DaimlerChrysler Corporation. Mopar is a registered trademark of DaimlerChrysler Corporation.

ENGINE SPECIFICATIONS

	2.0L	2.0L High-Output
Net Power – kW (bhp) @ rpm	98 (132) @ 5600	112 (150) @ 6500
Net Torque – N-m (lb-ft) @ rpm	176 (130) @ 4600	183 (135) @ 4800

DIMENSIONS

Wheelbase – mm (in.)	2667 (105.0)
Overall Length – mm (in.)	4430 (174.3)
Width at Body – mm (in.)	1712 (67.4)
Height – mm (in.)	1422 (56.0)
Luggage Capacity – L (cu. ft.) ⁽¹⁾	371 (13.1)
Seating Capacity	5

⁽¹⁾Increased capacity with rear seats folded. Properly secure all cargo.



A. 14-inch Bolt-on Wheel Cover standard on Base.

B. 15-inch Cast Aluminum Wheel optional on Base.

C. 15-inch Cast Aluminum Wheel standard on Sport.

D. 15-inch Cast Aluminum Chrome Wheel optional on Sport.

E. 16-inch Cast Aluminum Wheel standard on R/T.



Atlantic Blue Pearl Coat

Black

Flame Red

Bright Silver Metallic

Blaze Red Crystal Pearl Coat

Graphite Metallic

Midnight Blue Pearl Coat

Electric Blue Pearl Coat

Stone White

Solar Yellow



Every 2004 Chrysler, Jeep, and Dodge vehicle is backed by the best protection we've ever offered: a 7-year or 115,000-kilometre Powertrain Warranty* plus 24-hour roadside assistance.* Basic Warranty coverage is for 3 years or 60,000 kilometres.* Rust-through coverage on all body sheet metal is for 3 years.

*Whichever comes first. Some conditions, including a deductible, may apply. See your retailer for complete details.

CHRYSLER FINANCIAL CANADA

Chrysler Financial Canada offers a variety of finance options, geared to both personal and business vehicle use. Visit chryslerfinancialcanada.ca for a complete review of your financing options. You can calculate your budget, estimate your monthly payments and even apply for credit online.



DODGE

For more information contact your neighbourhood Chrysler, Jeep, Dodge retailer,

or visit us @ dodge.ca

or call 1-800-361-3700



PRINTED ON PAPER WHICH CONTAINS A MINIMUM
OF 10% POST-CONSUMER RECYCLED FIBRE.

PRINTED IN CANADA 5284-C-274E