

**07 DODGE DAKOTA**



## COLOURS/WHEELS

Inferno Red. Brilliant Black. Patriot Blue. Just a few of the reasons Dodge Dakota is able to turn heads and corners simultaneously. Build the Dakota you want with *Build and Price* at [dodge.ca](http://dodge.ca)



*BRIGHT WHITE*



*BRIGHT SILVER METALLIC*



*LIGHT KHAKI METALLIC*



*INFERNO RED CRYSTAL PEARL*



*ELECTRIC BLUE PEARL*



*MINERAL GREY METALLIC*



*FLAME RED*



*PATRIOT BLUE PEARL*



*BRILLIANT BLACK CRYSTAL PEARL*



16" Styled Steel Wheel  
Standard on ST models



16" Painted Cast Aluminum Wheel  
Standard on SLT models  
Included with Sport Appearance  
Group on ST models



16" Painted  
Cast Aluminum Wheel  
Included with TRX  
and TRX4 Off-Road Groups



18" Silver Painted  
Cast Aluminum Wheel  
Included on SLT models with  
Sport Appearance Group



18" Chrome-Clad Wheel  
Optional on SLT models



18" Black Painted  
Cast Aluminum Wheel\*  
Optional on SLT models with  
Sport Appearance Group

\*Late availability

# DAKOTA BUYER'S GUIDE

## ENGINE AND TRANSMISSION

	ST	SLT
3.7L MAGNUM® V6/6-SPEED MANUAL	•	•
3.7L MAGNUM V6/4-SPEED AUTOMATIC	0	0
4.7L MAGNUM V8/6-SPEED MANUAL	0	0
4.7L MAGNUM V8/5-SPEED AUTOMATIC <sup>(1)</sup>	0	0
4.7L FLEXIBLE FUEL MAGNUM V8/5-SPEED AUTOMATIC <sup>(2)</sup>	0	0
4.7L HIGH OUTPUT MAGNUM V8/5-SPEED AUTOMATIC	N/A	0

## MECHANICAL

ANTI-SPIN DIFFERENTIAL – Requires 3.55 or 3.92 rear axle ratio (included with 4.7L High Output V8, TRX Group or TRX4 Off-Road Group)	Q/P	Q/P
AXLE RATIO – 3.21 rear (4x2 models with the 6-speed manual transmission only)	•	•
– 3.55 rear (included with 4x4 models; not available with 4.7L High Output V8 engine)	0	0
– 3.92 rear (included with 4.7L High Output V8 and 4-speed automatic transmission 4x4 models; requires anti-spin rear differential; not available with manual transmission)	Q/P	Q/P
BATTERY – 750-amp (included with the Heavy-Duty Service Group and Sound Box Group)	P	P
BRAKES – Front disc/rear drum with four-wheel ABS	0	0
ENGINE BLOCK HEATER	•	•
FULL SWING™ REAR DOORS – Club Cab models only (included with Popular Equipment Group)	P	•
TRANSFER CASE (4x4 MODELS ONLY) – Electronic, part-time shift-on-the-fly	•	•
– Electronic, full-time shift-on-the-fly, AWD system with HI and LO range (requires a V8 engine and automatic transmission)		0

## EXTERIOR FEATURES

BEDLINER – Cargo box, under-the-rail	0	0
BODYSIDE MOULDING – Deep Grey		0
– Body colour (included with Sport Appearance Group)		P
CHROME TUBULAR SIDE STEPS – (included with Chrome Edition Group)	Q/P	Q/P
FASCIAS – Front and rear, Deep Grey	•	
– Front and rear, body colour (included with Sport Appearance Group)	P	•
FOG LAMPS – Integrated into front fascia (included with Sport Appearance Group)	P	•
MIRRORS, EXTERIOR – Dual, manual, 5x7", Black, fixed	•	
– Dual, power, 5x7", Black, fixed (included in Power Convenience Group)	P	•
– Dual, power, 6x9", Black, foldaway (included with Trailer Tow Group)		P
TIRES – Includes full size spare. Actual spare tire and size varies by trim level and tire 4x2		
– P245/70R16 BSW on-/off-road	•	
– P255/65R16 OWL all-season		•
– P265/70R16 OWL all-terrain (included in TRX Group)	P	P
– P265/60R18 BSW on-/off-road (included with Sport Appearance Group, 18x8" chrome-clad or 18x8" Black wheels)		P
– P265/60R18 OWL on-/off-road (requires 18x8" cast aluminum or 18x8" chrome-clad wheels) (not available with 18x8" Black wheels)		0
4x4		
– P245/70R16 BSW on-/off-road	•	
– P265/70R16 OWL all-terrain		•
– P265/70R16 OWL on/off-road (included in TRX4 Off-Road Group)	P	P

## CLUB CAB™ / QUAD CAB®

## EXTERIOR FEATURES (CONTINUED)

	ST	SLT
A	E	
TIRES (CONTINUED) – P265/60R18 BSW on-/off-road (included with Sport Appearance Group, 18x8" chrome-clad or 18x8" Black wheels)		P
– P265/60R18 OWL on-/off-road (requires 18x8" cast aluminum or 18x8" chrome-clad wheels) (not available with 18x8" Black wheels)		0
WHEELS – 16x7" styled steel	•	
– 16x8" painted cast aluminum (included with Sport Appearance Group)	P	•
– 16x8" painted cast aluminum off-road (included in TRX and TRX4 Off-Road Groups)	P	P
– 18x8" Silver painted cast aluminum (included with Sport Appearance Group)		P
– 18x8" chrome-clad cast aluminum (includes P265/60R18 BSW on-/off-road tires)		0
– 18x8" Black painted cast aluminum <sup>(3)</sup> (includes P265/60R18 BSW on-/off-road tires) (requires Sport Appearance Group)		0

## INTERIOR

CONSOLE – Full centre floor (included with optional front bucket seats on Club Cab™ ST or Popular Equipment Group on Club Cab and Quad Cab ST)	Q/P	•
– Overhead, with mini trip computer and HomeLink® Universal Transceiver <sup>(4)</sup>		•
INSTRUMENT CLUSTER – Deluxe Satin Silver trim rings		•
SPEED CONTROL – (included with Convenience Group)	P	•
STEERING COLUMN – Tilt (included with Convenience Group)	P	•
STEERING WHEEL – Leather wrapped (included with leather-faced seats or Popular Equipment Group)		P
SUNROOF – Power		0
WINDOWS – Power (included with Power Convenience Group)	P	•
– Rear sliding with deep tint (not available with rear window defroster) (included with Popular Equipment Group)	Q/P	0
– Rear defroster with deep tint (not available with sliding rear window)	0	0

## SEATING AND TRIM

SEATS, FABRIC – Standard cloth	•	
– Premium cloth with YES Essentials™ seat fabric <sup>(5)</sup> (includes 40/40 rear folding seats on Club Cab ST) (included with Popular Equipment Group on Quad Cab ST)	Q/P	•
– Leather-faced		0
SEATS, FRONT – Heated front bucket seats (included with bucket seats with YES Essentials seat fabric <sup>(5)</sup> on Club Cab ST, Popular Equipment Group on Quad Cab ST or leather-faced bucket seats on SLT)	P	Q/P
– Low-back bucket seats	•	
– Low-back bucket seats with full centre console (included with optional front bucket seats on Club Cab ST or Popular Equipment Group on Club Cab and Quad Cab ST)	Q/P	•
– 40/20/40-split bench with centre folding armrest with storage	0	0
– Six-way power driver's seat with manual lumbar adjust (included with cloth-faced bucket or bench seats with YES Essentials <sup>(5)</sup> seat fabric or Popular Equipment Group on Quad Cab)	P	•
SEATS, REAR – 40/40 folding seats (Club Cab) included in the Popular Equipment Group or with cloth-faced bucket or bench seats with YES Essentials <sup>(5)</sup> seat fabric	Q/P	•
– 60/40 folding seats (Quad Cab)	•	•

## ENTERTAINMENT SYSTEMS

RADIO – AM/FM stereo radio with single-disc CD player and auxiliary input jack	•	•
– AM/FM premium stereo radio with six-disc integrated CD player with MP3 capability and RDS		0
– SIRIUS™ Satellite Radio System <sup>(3)</sup> – Includes one year subscription provided by SIRIUS (included with Popular Equipment Group)	Q/P	0



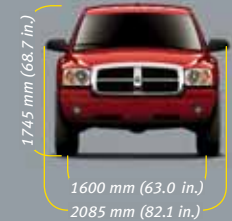
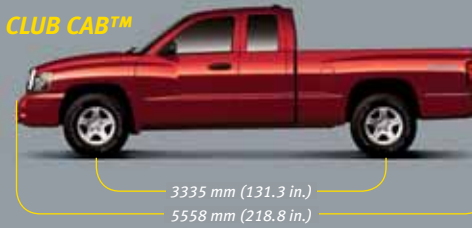
	CLUB CAB™ / QUAD CAB®	
	ST	SLT
ENTERTAINMENT SYSTEMS (CONTINUED)	A	E
REMOTE AUDIO CONTROLS – Steering wheel mounted (included with Popular Equipment Group)		P
SOUND BOX GROUP – 508 total amplified watts of power; nine total speakers, including a 10" subwoofer and two tweeters enclosed in a translucent stylized box. Includes 750-amp battery (available only on Club Cab models with Slate Grey front bucket seats)		O
SPEAKERS – Premium Speaker System by Alpine®, includes six speakers (in six locations) with 276-watt amplifier (included with Popular Equipment Group)		P
SAFETY & SECURITY		
AIR BAGS <sup>(6)</sup> – Advanced multistage driver and front outboard passenger	•	•
– Side-curtain offer additional protection to front and rear outboard occupants in the event of a collision (requires 40/40 rear folding seats on Club Cab) (not available with sunroof)	O	O
REMOTE KEYLESS ENTRY – (included with Power Convenience Group)	P	•
REMOTE START SYSTEM – Integrated with remote key pad (included with Popular Equipment Group) (requires automatic transmission)		P
SECURITY ALARM – Integrated vehicle alarm system		•
PACKAGES		
CHROME ACCENT GROUP – Includes tubular side steps, exhaust tip, fuel filler door and front air deflector	O	O
CONVENIENCE GROUP – Speed control and tilt steering column	O	•
HEAVY-DUTY SERVICE GROUP – Includes 750-amp battery, maximum engine cooling, auxiliary transmission cooler (automatic transmission only) and power steering cooler (included with Trailer Tow Group and TRX4 Off-Road Group)	O/P	O/P
INTERIOR CONVENIENCE GROUP – Overhead console with map lights, mini trip computer and HomeLink® Universal Transceiver <sup>(4)</sup>		•
POPULAR EQUIPMENT GROUP (ST) – Includes sliding rear window, centre floor console with 12-volt power outlet and SIRIUS satellite radio system. On Club Cab models: rear 40/40 folding seats and Full Swing™ rear doors. On Quad Cab models: front, heated, cloth-faced bucket seats with YES Essentials™ seat fabric, <sup>(5)</sup> driver's seat with manual lumbar adjust and six-way power	O	
POPULAR EQUIPMENT GROUP (SLT) – Steering wheel mounted audio controls, 276-watt amplifier, six Alpine speakers, leather wrapped steering wheel and remote start system		O
POWER CONVENIENCE GROUP – Remote keyless entry, power door locks, power 5x7" mirrors, power windows with driver's one-touch down feature and premium door trim panels with map pockets	O	•
SKID PLATE GROUP – Two front tow hooks and two skid plate shields that protect the transfer case, front suspension and the fuel tank (available on 4x4 models only) (included with TRX4 Off Road Group)	O/P	O/P
SPORT APPEARANCE GROUP (ST) – Body colour grille; front fascia and rear bumper with Black step pad; fog lamps; "Sport" decals (4x2 models only); and 16x8-inch cast aluminum wheels	O	
SPORT APPEARANCE GROUP (SLT) – Body colour grille, bodyside mouldings, "Sport" decals (4x2 models only), 18x8" Silver painted cast aluminum wheels and P265/60R18 BSW on-/off-road tires		O
TRAILER TOW GROUP – Includes Heavy-Duty Service Group, Class IV hitch receiver, 7-pin wiring harness and power 6x9" mirrors (mirrors included with SLT only)	O	O
TRX GROUP – Includes 3.55 axle ratio with anti-spin rear differential, tow hooks, TRX decals on cargo box, 16x8" cast aluminum off-road wheels with P265/70R16 OWL all-terrain tires (4x2 models only)	O	O
TRX4 OFF-ROAD GROUP – Includes Heavy-Duty Service Group, Skid Plate Group, anti-spin differential, 3.92 axle ratio (with automatic transmission only), TRX4 Off-Road decals on cargo box, front and rear rubber floor mats (SLT only), rear stabilizer bar delete, 16x8" cast aluminum off-road wheels with P265/70R16 OWL on-/off-road tires (4x4 models only)	O	O

• – Included P – Available within package noted O – Optional

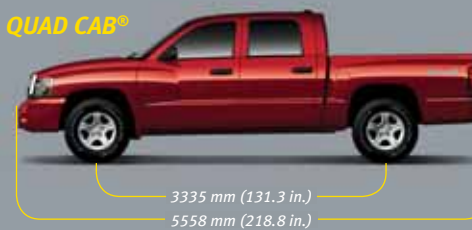
<sup>(1)</sup>Quad Cab only. <sup>(2)</sup>Late availability on Quad Cab. <sup>(3)</sup>Late availability. <sup>(4)</sup>Not compatible with all garage door openers. See your retailer for details. <sup>(5)</sup>Not compatible with aftermarket fabric protecting coatings. <sup>(6)</sup>Always use seat belts. For Club Cab, children 12 and under should only be in the front seat with the passenger air bag turned off, correctly using an infant or child restraint system, or the seat belt properly positioned, dependent on the child's age and weight. For Quad Cab, children 12 and under should always be in a back seat correctly using an infant or child restraint system, or the seat belt properly positioned, dependent on the child's age and weight.

# DAKOTA SPECIFICATIONS

## CLUB CAB™



## QUAD CAB®



## DODGE DAKOTA

Dodge Dakota delivers power, performance and capability wrapped up in a tough mid-size package. Dakota offers three outstanding engine choices and you can feel confident choosing any of the available V8s or the V6.

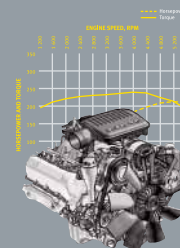
## PAYLOAD AND TOWING

MODEL	ENGINE	MAXIMUM PAYLOAD <sup>(1)</sup> KG (LB)	MAXIMUM TOWING <sup>(2)</sup> KG (LB)
DAKOTA CLUB CAB 4X2	3.7L	780 (1720)	2200 (4850)
	4.7L V8	721 (1590)	3221 (7100)
DAKOTA QUAD CAB 4X2	4.7L HO V8	703 (1550)	3221 (7100)
	3.7L V6	739 (1630)	2155 (4750)
DAKOTA CLUB CAB 4X4	4.7L V8	676 (1490)	3125 (7000)
	4.7L HO V8	649 (1430)	3152 (6950)
DAKOTA QUAD CAB 4X4	4.7L V8	621 (1370)	3107 (6850)
	4.7L HO V8	599 (1320)	3107 (6850)
DAKOTA QUAD CAB 4X4	3.7L V6	662 (1460)	2087 (4600)
	4.7L V8	599 (1320)	3084 (6800)
	4.7L HO V8	572 (1260)	3084 (6800)

<sup>(1)</sup>Payload figure shown must be reduced by the weight of the vehicle occupants, optional equipment and in-cab luggage, etc. <sup>(2)</sup>Maximum permissible weight of the trailer, fully laden. Dodge Trucks used to tow trailers over 807 kg (2000 lb) loaded weight must be equipped with Trailer Tow Group AMC, and trailers over 454 kg (1000 lb) loaded weight must have their own brakes. Trailer tow restrictions apply. See your retailer for details.

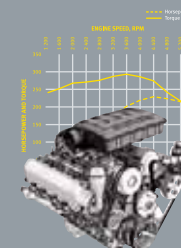
### 3.7-LITRE MAGNUM® V6

210 horsepower @ 5200 rpm  
235 lb-ft of torque @ 4000 rpm  
Standard on ST and SLT models.



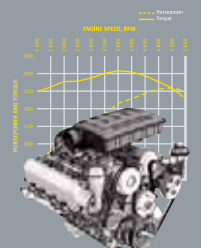
### 4.7-LITRE MAGNUM V8 / 4.7-LITRE FLEX FUEL MAGNUM V8

230 horsepower @ 4400 rpm  
290 lb-ft of torque @ 3600 rpm  
Available on ST and SLT models.



### 4.7-LITRE HIGH OUTPUT MAGNUM V8

260 horsepower @ 5200 rpm  
310 lb-ft of torque @ 3500 rpm  
Available on SLT model.



## DAKOTA CLUB CAB™ ST



**ALL DAKOTA MODELS INCLUDE THESE FEATURES:** 3.7-litre V6 engine › Getrag 6-speed manual transmission › Electronic, part-time 4WD system with 4LOCK, 4LO and Neutral (4X4 models) › Air conditioning › Four doors with vinyl trim panels and map pockets › Black instrument panel bezel › 12-volt power outlet › Cloth front bucket seats › Rear 60/40-split folding bench seat (Quad Cab) › AM/FM stereo radio with single-disc CD player and MP3 auxiliary input jack › Four speakers › Advanced multistage driver and front outboard passenger air bags<sup>(1)</sup> › Child Seat Anchor System (LATCH) › Sentry Key™ Engine Immobilizer › Deep Grey front fascia and rear step bumper › Bright grille › Dual 5x7-inch exterior mirrors › Dual stage removable tailgate › P245/70R16 on-/off-road tires › 16x7-inch styled steel wheels › Front disc/rear drum brakes with rear-wheel anti-lock › Engine block heater › 83L (18.3 imp. gal.) fuel tank

## DAKOTA QUAD CAB® SLT



**INCLUDES THE STANDARD EQUIPMENT OF THE PREVIOUS TRIM LEVEL EXCEPT WHERE NOTED:** 3.7-litre V6 engine › Getrag 6-speed manual transmission › Electronic, part-time 4WD system with 4LOCK, 4LO and Neutral (4x4 models) › Full centre floor console with storage › Convenience Group (speed control and tilt steering column) › Deluxe Satin Silver-trimmed instrument cluster › GH metal-style instrument panel bezel › Interior Convenience Group (overhead console with map lamps, mini trip computer and HomeLink® Universal Transceiver<sup>(2)</sup>) › Power Convenience Group (remote keyless entry, power door locks, power 5x7-inch mirrors, power windows with driver one-touch down feature and premium door trim panels with map pockets) › Cloth-faced high-back bucket seats with YES Essentials™ seat fabric<sup>(3)</sup> › Six-way power driver's seat with manual lumbar adjust › 40/40 folding rear seats (Club Cab) › Security alarm › Body colour front fascia and rear step bumper › Fog lamps › Full Swing™ rear doors (Club Cab only) › P255/65R16 OWL all-season (4x2) › P265/70R16 OWL all-terrain (4x4) › 16x8-inch cast aluminum wheels

## DAKOTA CLUB CAB TRX GROUP



**DAKOTA TRX GROUP INCLUDES:** Front tow hooks › Anti-spin differential › 16x8-inch cast aluminum off-road wheels with P265/70R16 OWL all-terrain tires › 3.55 axle ratio › TRX decals on cargo box (available on 4x2 models)

## DAKOTA ST WITH SPORT APPEARANCE GROUP



**DAKOTA ST WITH SPORT APPEARANCE GROUP INCLUDES:** Body colour grille; front fascia and rear bumper with Black step pad; fog lamps; "Sport" decals (4x2 models only); and 16x8-inch cast aluminum wheels

## DAKOTA SLT WITH SPORT APPEARANCE GROUP



**DAKOTA SLT WITH SPORT APPEARANCE GROUP INCLUDES:** Body colour grille; bodyside mouldings; "Sport" decals (4x2 models only); 18x8-inch Silver painted cast aluminum wheels; and P265/60R18 BSW on-/off-road tires

## DAKOTA CLUB CAB TRX4 OFF-ROAD GROUP

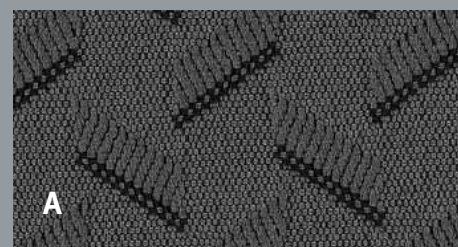


**DAKOTA TRX4 OFF-ROAD GROUP INCLUDES THE STANDARD EQUIPMENT OF THE TRX GROUP PLUS:** TRX4 Off-Road decals › Skid Plate Group › Heavy-Duty Service Group › P265/70R16 OWL on-/off-road tires › Special front and rear shocks › Rear stabilizer bar delete › 3.55 axle ratio with manual transmission; 3.92 axle ratio with automatic transmission › Front and rear rubber floor mats (SLT only) (available on 4x4 models)

<sup>(1)</sup>Always use seat belts. For Club Cab, children 12 and under should only be in the front seat with the passenger air bag turned off, correctly using an infant or child restraint system, or the seat belt properly positioned, dependent on the child's age and weight. For Quad Cab, children 12 and under should always be in a back seat correctly using an infant or child restraint system, or the seat belt properly positioned, dependent on the child's age and weight. <sup>(2)</sup>Not compatible with all garage door openers. See your retailer for details.

<sup>(3)</sup>Not compatible with aftermarket fabric protecting coatings.

# INTERIOR



**Standard on ST:** A) Slate Grey Cloth (interior shown upper left)

**Optional on ST:** B) Slate Grey YES Essentials™ Cloth

**Standard on SLT:** B) Slate Grey YES Essentials Cloth, C) Khaki YES Essentials Cloth (interior shown upper right)

**Optional on SLT:** D) Slate Grey leather-faced (interior shown bottom left), E) Khaki leather-faced