





# Design that connects





Beautiful function

## FIAT® 500L Design

Live large with the ease of four doors, flexible seating, the best-in-class storage system<sup>1\*</sup> and a roomy, inviting interior.



Chrome exterior accents, projector headlamps and premium leather-trimmed seating are just a few of the available 500L details that both entice and perform.



<sup>1</sup>\*A note about this brochure: all disclaimers and disclosures can be found on inside back cover.



Living large





# FIAT® 500L Lounge

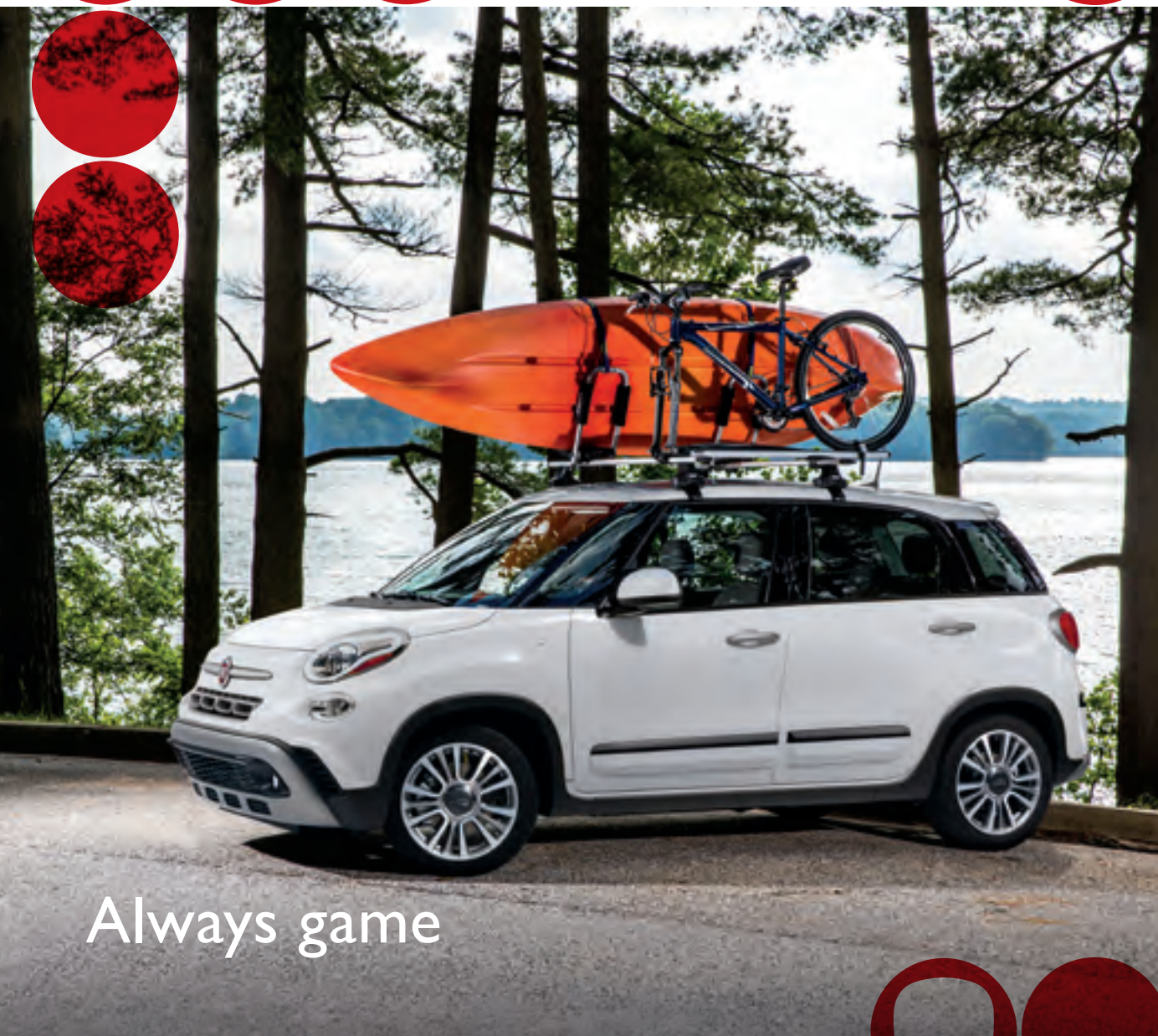
## SELECT STANDARD AND AVAILABLE EQUIPMENT

- 1.4L MultiAir® Turbo I-4 — 160 hp/184 lb-ft of torque with 6-speed AutoStick automatic transmission
- Bodyside door molding with chrome insert
- Chrome exterior accents
- 17-inch aluminum wheels
- Power heated exterior mirrors in Chrome
- Dual-Zone Automatic Temperature Control (ATC)
- Ambient LED interior lighting
- Rearview auto-dimming mirror
- Power 2-way driver lumbar adjust
- Premium leather-trimmed seats
- Heated front seats
- Accent-color instrument panel bezel
- Leather-wrapped steering wheel with audio and cruise controls
- 60/40 split-folding rear seats with Tilt, Tumble & Slide function
- Universal Garage Door Opener (UGDO)
- Uconnect® 4 NAV with 7-inch touchscreen display and GPS Navigation
- Integrated Voice Command with Bluetooth®
- SiriusXM® Radio<sup>2</sup> including 1-year trial subscription
- Apple CarPlay™<sup>3</sup> integration for your iPhone®
- Android Auto™<sup>4</sup> smartphone compatibility
- BeatsAudio™ Premium Sound System
- ParkView® Rear Back-Up Camera<sup>5</sup>
- ParkSense® Rear Park Assist System<sup>5</sup>
- Dual-pane power sunroof — Available
- Accent roof in Nero (Black) or Bianco (White) — Available



Elevated exploits





Always game

## FIAT® 500L Trekking

### SELECT STANDARD AND AVAILABLE EQUIPMENT

- 1.4L MultiAir® Turbo I-4 — 160 hp/184 lb-ft of torque with 6-speed AutoStick automatic transmission
- Body-color side door moldings with Black inserts
- Rugged-design bottom cladding and wheel arches
- Satin Silver exterior accents
- Projector headlamps and front fog lamps
- 17-inch unique Trekking aluminum wheel
- Body-color instrument panel bezel
- Leather-wrapped steering wheel with audio and cruise controls
- Electronic Vehicle Information Center (EVIC)
- Premium leather-trimmed seats
- Heated front seats
- 60/40 split-folding rear seats with Tilt, Tumble & Slide function
- Multi-position cargo panel
- Ambient LED interior lighting
- Universal Garage Door Opener (UGDO)
- Uconnect® 4 NAV with 7-inch touchscreen display and GPS Navigation
- Integrated Voice Command with Bluetooth®
- BeatsAudio™ Premium Sound System
- SiriusXM® Radio<sup>2</sup> including 1-year trial subscription
- Apple CarPlay™<sup>3</sup> integration for your iPhone®
- Android Auto™<sup>4</sup> smartphone compatibility
- ParkView® Rear Back-Up Camera<sup>5</sup>
- ParkSense® Rear Park Assist System<sup>5</sup> — Available
- Dual-pane power sunroof — Available
- Accent roof in Nero (Black) or Bianco (White) — Available
- Power 2-way driver lumbar adjust — Available
- Manual 2-way passenger lumbar adjust — Available
- Dual-Zone Automatic Temperature Control (ATC) — Available



# FIAT® 500L Pop

## SELECT STANDARD AND AVAILABLE EQUIPMENT

- 1.4L MultiAir® Turbo I-4 — 160 hp/184 lb-ft of torque with 6-speed AutoStick automatic transmission
- Body-color door moldings with Black inserts
- Chrome exterior accents
- Projector headlamps
- 16-inch aluminum wheels
- Electronic Vehicle Information Center (EVIC)
- Body-color instrument panel bezel
- Premium cloth bucket seats
- 60/40 split-folding rear seats with Tilt, Tumble & Slide function
- Multi-position cargo panel
- Uconnect® 4 with 7-inch touchscreen display
- Apple CarPlay™<sup>3</sup> integration for your iPhone®
- Android Auto™<sup>4</sup> smartphone compatibility
- Integrated Voice Command with Bluetooth®
- Leather-wrapped steering wheel with audio and cruise controls
- Power heated exterior mirrors in body-color
- ParkView® Rear Back-Up Camera<sup>5</sup>
- Tire Pressure Monitoring System
- Accent roof in Nero (Black) or Bianco (White) — Available
- SiriusXM® Radio<sup>2</sup> including 1-year trial subscription — Available
- Power 2-way driver lumbar adjust — Available
- Dual-Zone Automatic Temperature Control (ATC) — Available
- BeatsAudio™ Premium Sound System — Available



The go-to for your go-tos



## A superior outlook

The largest dual-pane sunroof in its class<sup>1</sup>



FIAT® 500L builds on traditional FIAT cues with a small-wide architecture that is the foundation for the vehicle's open, loft-like interior. It features glass-framed pillars that support its expansive dual-pane sunroof — the largest in its class.<sup>1</sup> This “floating” roof provides spectacular 360-degree views.







## T O W E R I N G

Combining contemporary Italian design and iconic FIAT® cues into a roomier package made for five, FIAT 500L is the vehicle that takes 500 to the next logical step. Allowing personal choice in models, features, color schemes and trim levels means there will always be a FIAT 500L to match your unique personality. Having super-flexible seating and innovative storage capabilities means that FIAT 500L will always complement — and enhance — your extraordinary lifestyle.

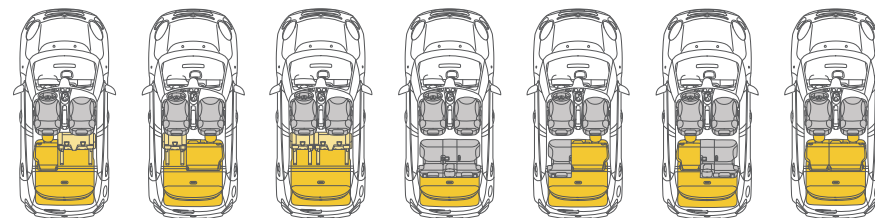
## T A L E N T S



Properly secure all cargo.







## Configure it out

### BEST-IN-CLASS CARGO ROOM<sup>1</sup>

Super-flexible seating configurations — 54 in all — mean that your passengers get as much consideration as all your belongings. With over 98 cubic feet total interior volume, packing is practically effortless and incredibly efficient with 60/40 split-folding rear seats and the Tilt, Tumble & Slide function. You can recline seatbacks to the preferred angle, create legroom by sliding seats and add cargo space with the tumbling action.

### FLOATING ROOF DESIGN

The 500L owes much of its roomy, open entertaining space to its unique roof design, which includes the largest sunroof in its class! This distinctive roof\* is available in White, Black or body-color options.



FIAT® 500L Trekking shown in Giallo (Yellow).

\*Roof color options vary by exterior color. Please consult your local FIAT dealer for complete details. 19



# Thinking ahead

## SAFETY AND SECURITY



### **Electronic Stability Control (ESC)<sup>6</sup>**

This feature assists drivers in maintaining control of their vehicles during extreme steering maneuvers. Standard.



### **ParkSense<sup>®</sup> Rear Park Assist System<sup>5</sup>**

When the vehicle is in Reverse, these available sensors detect objects in the rear pathway, providing an audible and visual warning. Available.



### **7 Standard Air Bags<sup>7</sup>**

Front-seat-mounted side, front and rear side, knee and advanced multistage front air bags<sup>7</sup> all work together, providing protection.



### **Hill Start Assist**

Maintains brake pressure during uphill stop/start moments to help prevent rollback — for a smooth start every time. Standard.



### **High-strength Steel**

Innovative safety-cage body structure is made with high-strength steel to create energy-absorbing crumple zones. Standard.



### **ParkView<sup>®</sup> Rear Back-Up Camera<sup>5</sup>**

Provides a wide-angle view with dynamic grid lines on a color touchscreen, aiding the driver when the vehicle is in Reverse. Standard.



### **Bi-function Halogen Projector Headlamps**

Provide more controlled illumination for increased visibility. Standard.



### **Front-seat Active Head Restraints<sup>8</sup>**

In the event of a rear collision, these restraints activate to help reduce injuries by minimizing the gap between the driver and front-passenger head restraint<sup>8</sup> and the occupant's head. Standard.



### **Tire Pressure Monitoring System**

Gives crucial, pinpointed information in the Electronic Vehicle Information Center (EVIC) at the moment any tire pressure falls below safe driving criteria. Standard.



### **Remote Keyless Entry**

Affords easy access by remotely locking and unlocking doors and turning on interior lamps. For vehicles equipped with the standard security alarm, this device also arms and disarms that system. Standard.



## Power = Possibility

BEST-IN-CLASS STANDARD POWER AND TORQUE<sup>1</sup>



FIAT® 500L delivers more than ample power to make the most of its expansive capacity. Its innovative 1.4L MultiAir® Turbo engine utilizes advanced cast and structural aluminum to reduce overall mass for great efficiency. The engine's turbocharger spins up to 230,000 rpm to create impressive torque and power, while the innovative MultiAir variable valve system allows for optimized intake air control and efficiency. In short, every trip in the 500L offers huge potential.





# turbo



## Lead-foot appeal

In FIAT® 500L, the award-winning and innovative 1.4L MultiAir® Turbo engine delivers 160 horsepower and 184 lb-ft of torque. Its forceful performance is made all the more impressive thanks to a talented partner — a 6-speed automatic transmission that features AutoStick. It offers drivers an extra degree of control, with the ability to downshift and upshift via the gear selector. Adding to the vehicle's nimble nature, KONI® MacPherson front struts and rear shock absorbers help make for handling that's truly responsive.





STANDARD OR  
AVAILABLE  
FEATURES



AUTOMATIC  
TEMPERATURE  
CONTROLS (ATC)\*



GPS NAVIGATION\*



REMOTE USB PORT  
CHARGE ONLY



HEATED  
FRONT SEATS\*

Designers approached the interior from a driver-centric standpoint, beginning with the FIAT® 500L instrument panel — a blend of simplicity and Italian refinement. The Electronic Vehicle Information Center (EVIC) clearly delivers trip and vehicle information, while other essentials are placed within reach.

TECHNOLOGY THAT'S BEYOND

# U C O N N E C T<sup>®</sup>

FIAT<sup>®</sup> 500L features the next-generation Uconnect<sup>®</sup> 4 and Uconnect 4 NAV radio systems, both with: 7-inch touchscreen display • Integrated Voice Command with Bluetooth<sup>®</sup> • Android Auto<sup>™</sup> smartphone compatibility • Apple CarPlay<sup>™</sup> integration for iPhone<sup>®</sup> • Available GPS navigation with intuitive map graphics • Available SiriusXM<sup>®</sup> Radio<sup>2</sup> • Hands-free<sup>9</sup> calling and text delivery • Available BeatsAudio<sup>™</sup> Premium Sound System

FIAT 500L features the largest standard touchscreen in its class.!

Uconnect

SiriusXM

beatsaudio

Works with  
Apple CarPlay

android  
auto



00



Big sound

music

#### SIRIUSXM® RADIO<sup>2</sup>

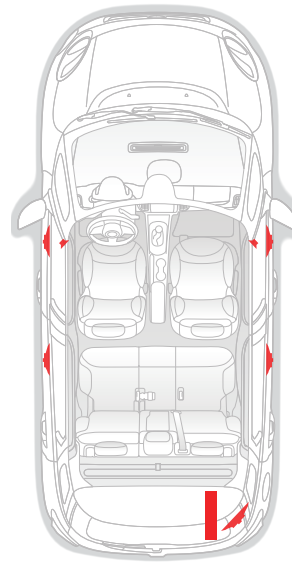
Enjoy the perks of satellite radio, including commercial-free music, plus sports, news, talk and entertainment. The SiriusXM app<sup>2</sup> lets you listen wherever you go on your portable devices (one-year trial subscription included). Available.

#### APPLE CARPLAY™<sup>3</sup>

A smarter, safer way to use an iPhone® inside your vehicle, integrated with the Uconnect® touchscreen and Siri®<sup>10</sup>. Make calls, access music, send and receive messages, get directions optimized for traffic conditions and more. Standard.

#### ANDROID AUTO™<sup>4</sup>

Provides a safer way to use Android while driving. Easily access Google Maps™ with voice-guided navigation, search Play Music, place phone calls, send/receive messages and ask Google Search any question by voice command. Standard.

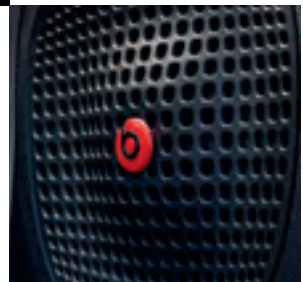


Seamless Bluetooth® connectivity and class-exclusive<sup>1</sup> standard Apple CarPlay™<sup>3</sup> or Android Auto™<sup>4</sup> give you uninterrupted access to your favorite sources of news, music, friends, work and family — all while your hands stay on the wheel.



The ultimate concert hall: at left, the FIAT® 500L Lounge shown with Carrera Gray premium leather-trimmed seats, surrounded with a specially tuned BeatsAudio™ speaker configuration.

The available BeatsAudio Premium Sound System brings its acoustic expertise to enhance the 500L experience.



LIVE LIFE

## WELL-EQUIPPED

**THE GENIUS IS IN THE DETAILS** You'll find sophisticated touches everywhere on every FIAT® 500L model ... from exterior Chrome accents to soft-touch leather-wrapped shift knobs and steering wheels to conveniently placed window and audio controls. Every consideration has been made from the driver and passengers' point of view.



FIAT 500L Trekking shown in Bianco (White) with Mopar® accessories. Properly secure all cargo.



500L designers always make room for head-turning accents: 17-inch aluminum wheels are standard on Trekking and Lounge models. (Shown on Trekking.)



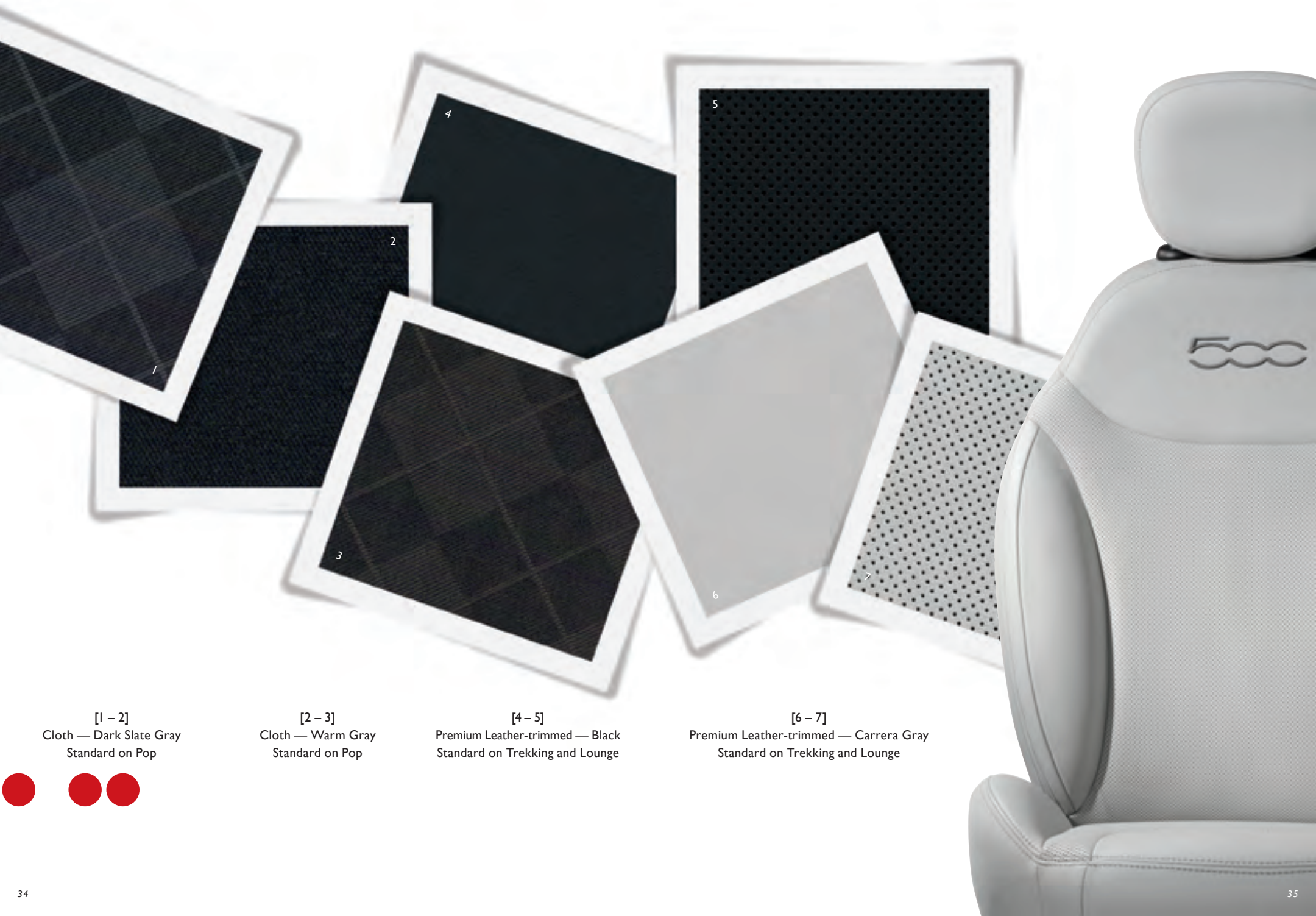
What the L stands for: the FIAT® 500L means living large in a crowded world. Contemporary Italian design and iconic FIAT cues are combined to create a spacious, nimble vehicle that comfortably fits five.



The FIAT 500L is never content to sit at home — and its accommodating four doors, flexible seating and roomy interior conspire to get your friends and family off the couch too. Thanks to its unique, urban-friendly proportions, the 500L manages to mix true spaciousness with contagious pep and agility ... all for the fun of it.



FIAT® 500L Materials With an array of textures, patterns and colors, 500L is big on making good impressions.



[1 – 2]  
Cloth — Dark Slate Gray  
Standard on Pop

[2 – 3]  
Cloth — Warm Gray  
Standard on Pop

[4 – 5]  
Premium Leather-trimmed — Black  
Standard on Trekking and Lounge

[6 – 7]  
Premium Leather-trimmed — Carrera Gray  
Standard on Trekking and Lounge



The FIAT 500L color choices play to your adventurous side, with an original palette that's just waiting to be discovered.

<p>NERO White and Body-Color Roof</p>	<p>GRIGIO CHIARO Black and Body-Color Roof</p>	<p>GRIGIO SCURO White and Body-Color Roof</p>
<p>GIALLO White, Black and Body-Color Roof</p>	<p>ARANCIA PASTELLO Black and Body-Color Roof</p>	<p>BLUE TORNADO White, Black and Body-Color Roof</p>
<p>BIANCO Black and Body-Color Roof</p>		
<p>ROSSO White, Black and Body-Color Roof</p>	<p>VERDE BOSCO PERLA White and Body-Color Roof</p>	<p>BRONZO METALLIZZATO Black and Body-Color Roof</p>
<p>BLU DENIM White, Black and Body-Color Roof</p>		





## FIAT® 500L Specifications

		POP	TREKKING	LOUNGE
ENGINE		TRANSMISSION		
1.4L MultiAir® Turbo I-4		6-speed automatic		
		•	•	•
MECHANICAL FEATURES				
Alternator — 150-amp		•	•	•
AutoStick Automatic Transmission		•	•	•
Battery — 500-amp, maintenance-free		•	•	•
Engine Block Heater		O	O	O
Front-Wheel Drive (FWD)		•	•	•
Fuel Door — Capless fuel-filler		•	•	•
Fuel Tank — 13.2-gallon capacity		•	•	•
Steering — Electric power; tilt/telescoping column		•	•	•
Suspension — Front MacPherson suspension with coil springs and twin-tube struts with KONI® FSD technology and stabilizer bar; rear twist-beam axle with coil springs and twin-tube shock absorbers with KONI FSD technology		•	•	•
EXTERIOR FEATURES				
Bodyside Molding — Body-color with Matte Black insert		•	•	—
— With Chrome insert		—	—	•
— Lower sill and wheel arch accent moldings in Nero (Black)		—	•	—
Door Handles — Chrome		•	•	•
Fascias (front) — Body-color		•	—	—
— Body-color with rugged design, Satin Gray accent		—	•	—
— Body-color Bright Chrome accent (packaged with Chrome Appearance Group)		P	—	•
Glass — Deep-tint, sunscreen		•	•	•
License Plate Bracket — Front		O	O	O
Lighting — Bi-function halogen projector headlamps		•	•	•
— Daytime running lamps		•	•	•
— Cornering front fog lamps		—	•	•
— Chrome headlamp bezels		•	•	•
Mirrors — Power heated, adjustable, foldaway with spotter mirrors in body-color		•	•	—
— Power heated, adjustable, foldaway with spotter mirrors in Chrome		—	—	•
— Roof-color exterior mirror (Gray with Graphite Edition)		O	O	P
Roof — Body-color		•	•	•
— Nero (Black) includes roof-color exterior mirrors; mirrors remain Chrome on Lounge models (available in select colors, please see dealer for details)		O	O	O
— Bianco (White) includes roof-color exterior mirrors; mirrors remain Chrome on Lounge models (available in select colors, please see dealer for details)		O	O	O
— Gray (packaged with Graphite Edition)		—	—	P
Sunroof — Power dual-pane panoramic glass with vent and one-touch express open; includes sun visors with illuminated mirrors		—	O	O
Tires — 205/55R16 BSW All-Season		•	—	—
— 225/45R17 BSW All-Season		—	•	•
— Tire Service Kit		•	•	•
— Compact spare		O	O	O
Wheels — 16-inch aluminum		•	—	—
— 17-inch machined aluminum with Black pockets (with Chrome Appearance Group)		P	—	—
— 17-inch aluminum		—	•	—
— 17-inch aluminum painted Gray		—	—	•

	POP	TREKKING	LOUNGE
EXTERIOR FEATURES (continued)			
— 17-inch machined aluminum with White-painted pockets (requires Bianco (White) exterior color or Bianco (White) roof)	—	—	O
— 17-inch aluminum (packaged with Graphite Edition)	—	—	P
Windows — Power front and rear with one-touch up/down	•	•	•
— Rear window defroster	•	•	•
Wipers — Front wipers, variable/intermittent	•	•	•
— Rear wiper/washer, intermittent	•	•	•
INTERIOR FEATURES			
Armrest — Vinyl-wrapped with storage	•	•	•
— Fold-down rear armrest with cup holder (included with leather-trimmed seats)	—	•	•
Assist Handles — Front and rear with coat hooks	•	•	•
Cargo Area — Multi-position rear cargo shelf panel	•	•	•
— Rear lamp	•	•	•
Climate Control — Air conditioning	•	•	—
— Automatic Temperature Control (ATC) with Dual-Zone controls (with Premium Group and Popular Equipment Group)	P	P	•
Console — Front center floor with armrest, cup holders and parking brake	•	•	•
Door Locks — Power	•	•	•
Electronic Vehicle Information Center (EVIC) — Driver-selectable with trip computer, outside temperature, average fuel economy, distance-to-empty, low fuel, service interval and driving range	•	•	•
Floor Mats — Front and rear	•	•	•
Instrument Panel — Painted body-color	•	•	—
— Accent	—	—	•
Lighting — Ambient LED	—	•	•
— Front reading/map lamps	•	•	•
Mirrors — Rear-passenger observation mirror (not available with sunroof)	•	•	•
— Sun visor with mirror	•	—	—
— Sun visors with illuminated mirror	—	•	•
— Rearview manual day/night adjust	•	•	—
— Rearview auto-dimming (with Popular Equipment Group and Premium Group)	P	P	•
Power Outlet — 12-volt	•	•	•
Seating — Premium cloth low-back bucket	•	—	—
— Premium leather-trimmed bucket	—	•	•
Seats (front) — Driver and front-passenger height adjuster	•	•	•
— Power two-way driver lumbar adjuster (with Popular Equipment Group and Premium Group)	P	P	•
— Manual two-way front-passenger lumbar adjuster (with Popular Equipment Group)	—	P	•
— Heated front seats	—	•	•
— Front-seatback map pockets	•	•	•
Seats (rear) — 60/40 split-folding with Tilt, Tumble & Slide function	•	•	•
— Three headrests	•	•	•
— Armrest with cup holder	—	•	•
Shift Knob — Black, leather-wrapped with Chrome accent	•	•	•
Speedometer — 150-mph primary	•	•	•
Steering Wheel — Leather-wrapped with audio and cruise controls	•	•	•
Storage — Front-passenger instrument-panel cubby bin and concealed compartment	•	•	•
— Front-passenger glove box	•	•	•

• = Standard. O = Optional. P = Available within Package. — = Not available.

## FIAT® 500L Specifications

POP  
TREKKING  
LOUNGE

## UCONNECT®

Apple CarPlay™ <sup>3</sup> and Android Auto™ <sup>4</sup> — Compatible with Uconnect 4 with 7-inch display and Uconnect 4 NAV with 7-inch display	•	•	•
Integrated Voice Command with Bluetooth® for hands-free <sup>9</sup> communications and streaming audio	•	•	•
Remote USB Port <sup>11</sup> — Charging only	•	•	•
SiriusXM® Radio <sup>2</sup> — Includes one-year trial subscription (with Uconnect 4 NAV with 7-inch display; requires Popular Equipment Group or Premium Group on Pop models)	O/P	•	•
Speakers — Six	•	—	—
— BeatsAudio™ Premium Sound System — Includes seven premium speakers, including 6.5-inch dual-voice coil subwoofer with trunk-mounted enclosure and 8-channel amplifier with BeatsAudio digital sound processing algorithm (with Premium Group)	O/P	•	•
Uconnect 4 with 7-inch display — Includes 7-inch touchscreen display, Integrated Voice Command with Bluetooth®, Bluetooth streaming audio, Apple CarPlay <sup>3</sup> and Android Auto <sup>4</sup> compatible, and AM/FM radio	•	—	—
Uconnect 4 NAV with 7-inch display — Includes 7-inch touchscreen display, GPS navigation, Integrated Voice Command with Bluetooth, Bluetooth streaming audio, Apple CarPlay <sup>3</sup> and Android Auto <sup>4</sup> compatible, AM/FM radio, and SiriusXM Radio <sup>2</sup> ; including one-year trial subscription (with Premium Group)	P	•	•

## SAFETY &amp; SECURITY

Active Head Restraints <sup>8</sup> — Front seats	•	•	•
Air Bags <sup>7</sup> — Advanced multistage driver and front-passenger	•	•	•
— Supplemental front and rear side-curtain	•	•	•
— Supplemental front-seat-mounted side (pelvic-thorax)	•	•	•
— Driver's-side knee bolster	•	•	•
BeltAlert — Passenger seat	•	•	•
Brake System — Antilock four-wheel disc	•	•	•
Child Seat Anchor System — LATCH-ready	•	•	•
Cruise Control	•	•	•
Electronic Roll Mitigation	•	•	•
Electronic Stability Control (ESC) <sup>6</sup>	•	•	•
Hill Start Assist	•	•	•
ParkSense® Rear Park Assist System <sup>5</sup> (with Popular Equipment Group and Premium Group)	P	P	•
ParkView® Rear Back-Up Camera <sup>5</sup> with active grid lines	•	•	•
Remote Keyless Entry with two key fobs	•	•	•
Security Alarm	•	•	•
Sentry Key® Engine Immobilizer — Theft-deterrent system	•	•	•
Tire Pressure Monitoring System with display	•	•	•
Universal Garage Door Opener (UGDO)	—	•	•

## GROUPS/PACKAGES

Chrome Appearance Group — Includes bright Chrome exterior accents on front fascia, rear reflector bezels and bodyside molding, 17-inch machined aluminum wheels with Black pockets and 225/45R17 All-Season tires	O	—	—
Graphite Edition — Includes Gray roof and matching exterior side mirrors, dual-pane power sunroof and 17-inch aluminum wheels (available in select colors, please see dealer for details)	—	—	O
Popular Equipment Group — Includes power two-way driver lumbar adjust, rearview auto-dimming mirror, Dual-Zone Automatic Temperature Controls (ATC), ParkSense Rear Park Assist <sup>5</sup> ; additional for Trekking models includes manual two-way passenger lumbar adjust (requires SiriusXM Radio <sup>2</sup> on Pop models; not available with Premium Group on Pop models)	O	O	—
Premium Group — Includes power two-way driver lumbar adjust, rearview auto-dimming mirror, Dual-Zone ATC, ParkSense Rear Park Assist <sup>5</sup> ; BeatsAudio Premium Sound System including subwoofer, Uconnect 4 NAV with 7-inch touchscreen display plus GPS navigation, Apple CarPlay <sup>3</sup> , Android Auto <sup>4</sup> and SiriusXM Radio <sup>2</sup> ; including one-year trial subscription	O	—	—

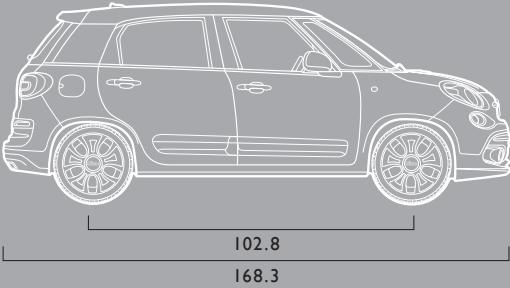
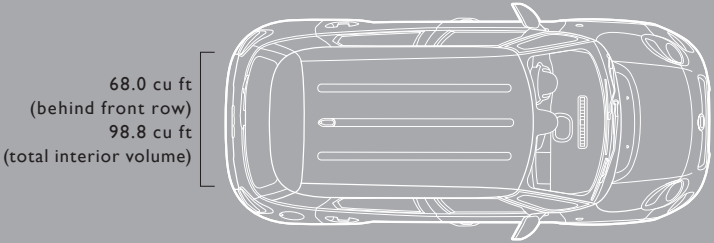
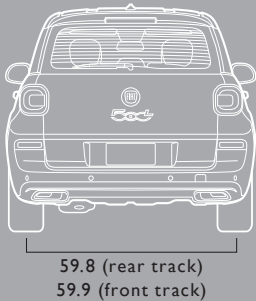
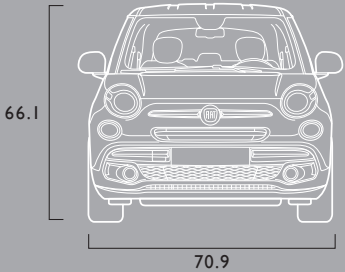
• = Standard. O = Optional. P = Available within Package. — = Not available.

wheels

16-INCH ALUMINUM  
Standard on Pop17-INCH ALUMINUM  
Standard on Trekking17-INCH ALUMINUM  
PAINTED GRAY  
Standard on Lounge17-INCH MACHINED  
ALUMINUM WITH  
WHITE-PAINTED  
POCKETSAvailable on Lounge  
in Bianco (White) or  
with Bianco (White) roof



FIAT® 500L Dimensions (inches, based on Trekking model)



FIAT® 500L Trekking shown in Bianco (White). Properly secure all cargo.



FIAT® 500L Trekking shown in Giallo (Yellow).



## Join us

Join fellow enthusiasts and tell your story by posting comments, participating in discussions and sharing your FIAT® vehicle photos and videos. Connect with our community on Facebook ([facebook.com/fiatusa](https://facebook.com/fiatusa)), follow us on Twitter ([twitter.com/fiatusa](https://twitter.com/fiatusa)), and check us out on YouTube ([youtube.com/fiatusa](https://youtube.com/fiatusa)), Tumblr ([fiatusa.tumblr.com](https://fiatusa.tumblr.com)), Google+ ([plus.google.com/+fiatusa](https://plus.google.com/+fiatusa)), FIAT Backstage ([blog.fiatusa.com](https://blog.fiatusa.com)), Instagram ([instagram.com/fiatusa](https://instagram.com/fiatusa)) and Pinterest ([pinterest.com/fiatusa](https://pinterest.com/fiatusa)).

Standard coverage includes: Basic Limited Warranty<sup>12</sup> — 4 Years/50,000 Miles, Anti-Corrosion Perforation Limited Warranty (outer panel) — 5 Years/100,000 Miles, Roadside Assistance — 4 Years/Unlimited Miles with services including: Flat-Tire Service, Out of Gas/Fuel Delivery (maximum two gallons), Battery Jump Assistance, Lockout Service and Towing Assistance.

Visit your FIAT dealer for additional details, eligibility and restrictions.



## FIAT merchandise

Display your affection for striking style with merchandise that complements an active lifestyle. This collection includes everything from trendsetting apparel to distinctive conversation pieces for home, office and travel. Visit [e-store.fiatusa.com](https://e-store.fiatusa.com)

### FIAT DRIVEPLUS<sup>SM</sup> MASTERCARD<sup>®</sup>

Apply today for a FIAT DrivePlus Mastercard and upon approval earn a \$100 statement credit toward your first FCA US LLC in-dealership purchase and earn 5% back on FCA US LLC dealership purchases, 2% back on gas and travel purchases, and 1% back on purchases everywhere else!<sup>13</sup> Double Redemptions (2X) when you redeem toward your next FCA US LLC dealership service or your next FIAT Brand vehicle purchase. Visit [drivepluscard.com](https://drivepluscard.com) or visit a participating dealer to learn more.





mopar.com

AUTHENTIC FIAT®

## ACCESSORIES

**IT'S EVEN MORE "YOU"** The collection of authentic Mopar® accessories will pack your FIAT 500L vehicle with even more punch: featuring chrome mirror covers, Italian stripe upper bodyside graphics and 17-inch Gloss Black, diamond-cut 15-spoke wheels. See a full listing of other available accessories at [mopar.com](http://mopar.com)

(1) Based on FCA US LLC Compact MPV segment. (2) SiriusXM audio and data services each require a subscription sold separately, or as a package, by Sirius XM Radio Inc. Your SiriusXM service will automatically stop at the end of your trial unless you decide to subscribe. **If you decide to continue service after your trial, the subscription plan you choose will automatically renew thereafter and you will be charged according to your chosen payment method at then-current rates.** Fees and taxes apply. To cancel, you must call SiriusXM at 1-866-635-2349. See SiriusXM Customer Agreement for complete terms at [www.siriusxm.com](http://www.siriusxm.com). All fees and programming subject to change. Not all vehicles or devices are capable of receiving all services offered by SiriusXM. Current information and features may not be available in all locations, or on all receivers. (3) Requires compatible iPhone. See dealer for phone compatibility. Data plan rates apply. Vehicle user interface is a product of Apple. Apple CarPlay is a trademark of Apple Inc. iPhone is a trademark of Apple Inc., registered in the US and other countries. Apple terms of use and privacy statements apply. (4) To use Android Auto on your phone screen, you'll need an Android phone running 5.0 (Lollipop) or higher and the Android Auto app. Android and Android Auto are trademarks of Google LLC. (5) Always check entire surroundings visually before backing up. (6) Always drive carefully, consistent with conditions. Always wear your seat belt and obey traffic laws. (7) Always sit properly in designated seating positions with seat belts securely fastened at all times. (8) Always sit properly with the head restraint properly adjusted. Never place anything in front of the head restraint. (9) The Uconnect Phone requires a mobile phone equipped with the Bluetooth Hands-Free Profile. To check phone compatibility, please visit [www.UconnectPhone.com](http://www.UconnectPhone.com). (10) Requires an iPhone with Siri. Certain features are not available while the vehicle is in motion. iPhone must be within active cellular range. Customer's existing iPhone data rates apply to Internet-supported features. (11) For supported file formats, refer to the USB Port section of the Owner's Manual on the DVD. (12) See your dealer for complete details and a copy of the 4-Year/50,000-Mile Basic Limited Warranty. (13) See the Reward Terms and Conditions in the Summary of Credit Terms provided at time of application for details, including earning, redemption, expiration or forfeiture. Percentage back is earned as points.

©2018 FCA US LLC. All Rights Reserved. FIAT is a registered trademark of FCA Group Marketing S.p.A., used under license by FCA US LLC. Mopar, ParkSense, ParkView, Sentry Key and Uconnect are registered trademarks of FCA US LLC. The 500L design is a registered trademark of FCA Italy S.p.A., used under license by FCA US LLC.

MultiAir is a registered trademark of C.R.F. Società Consortile per Azioni, used under license by FCA US LLC. Apple CarPlay is a trademark and iPhone and Siri are registered trademarks of Apple Inc. Dr. Dre, Beats, BeatsAudio and the b logo are trademarks of Beats Electronics, LLC. Bluetooth is a registered trademark of Bluetooth SIG, Inc. Facebook is a registered trademark of Facebook, Inc. Google, Android Google Maps, YouTube and other related marks and logos are trademarks of Google LLC. Instagram is a registered trademark of Instagram, Inc. KONI is a registered trademark of KONI North America. Mastercard cards are issued by First Bankcard, a division of First National Bank of Omaha pursuant to a license from Mastercard International Incorporated. Mastercard is a registered trademark and the circles design is a trademark of Mastercard International Incorporated. Pinterest is a registered trademark of Pinterest, Inc. SiriusXM Connected Vehicles Services Inc., Sirius, XM, SiriusXM and all related marks and logos are registered trademarks of SiriusXM Radio Inc. Tumblr is a registered trademark of Tumblr, Inc. The Twitter name, logo, Twitter T, Tweet and the Twitter bird are trademarks of Twitter, Inc. in the United States and other countries.

This brochure is a publication of FCA US LLC. All product illustrations and specifications are based upon current information at the time of publication approval. FCA US LLC reserves the right to make changes from time to time, without notice or obligation, in prices, specifications, colors and materials, and to change or discontinue models which are considered necessary to the purpose of product improvement or for reasons of design and/or marketing.

