

# FREEMONT





Life is a story which should be written freely.

Every day, choose where you want to go, who you want to go with, what you want to do and what you want to take with you.

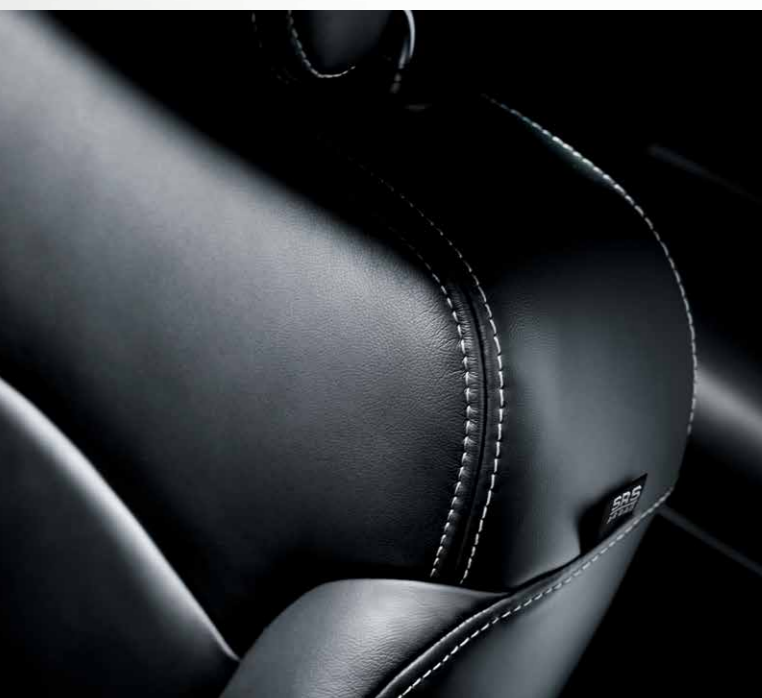
Here comes a new way of getting around. Whatever life has in store for you, let yourselves be surprised by the beguiling Freemont.

The car equipped with everything you want, the version, with automatic transmission.

**FREEMONT.** All the cars you want.

**FREEMONT.** ALL THE CHARACTER YOU WANT.

Freemont is the perfect combination of space, functionality and versatility, expressed with an original and engaging style. The grille sporting the Fiat logo, the muscular front end and the round curving bumpers are integral parts of the car's dynamic personality and open up the road to a new way of experiencing the car. More freedom, more Freemont. The painstaking care over details, such as the use of soft touch materials and chrome-plated details, gives the interior a refined and distinctive touch.





**FREEMONT.** ALL THE SPACE YOU WANT.

With 7 seats as standard and a third row which is comfortable and spacious, Freemont is perfect for travelling in complete freedom with whoever you want. The vehicle's interior dimensions also ensure optimum comfort on-board, offering maximum space and versatility.



**FREEMONT.** ALL THE SPACE YOU WANT.

Take all the space and versatility you need. With a simple movement you can fold the front passenger seat and all the seats of the second and third row independently from one another to create no less than 32 different configurations and form a flat, regularly shaped load compartment each time.

The raised driving position offers outstanding comfort so that you can feel in control of the road. The seats in the second and third row are arranged so that all passengers can benefit from a panoramic view of the surrounding landscape.



## FREEMONT. ALL THE FLEXIBILITY YOU WANT.

Over 20 storage compartments which remarkably total up a capacity equal to that of the luggage compartment of an average city car alone. The passenger seat, for example, has a practical compartment underneath, which can be accessed easily, while the floor of the second row houses two large storage compartments under the mats. With Freemont, you can take everything that you need with you, without having to leave anything behind.



# FIAT FREEMONT

To enhance your sense of freedom further, FREEMONT,  
with 6-speed automatic transmission that  
guarantees better traction, optimised gear shifts,  
and the ability to drive with the utmost  
safety on any road, whatever the weather.



FREEMONT. ALL THE COMFORT YOU WANT.



The new high-performance is driven by the 2.4 I4 DOHC 16V Dual VVT 170 HP.

The engine is combined with a six-speed automatic transmission that guarantees faster acceleration (kick-down function), easy starting uphill as well as a smooth shifting, resulting in superb comfort for passengers. With automatic transmission, the driver can choose between using the sequential Autostick mode and engaging the desired gear or leaving the electronic transmission control unit to establish the most suitable ratio.

**2.4 DOHC 16V DUAL VVT 170HP FWD AUTOMATC TRANSMISSION**

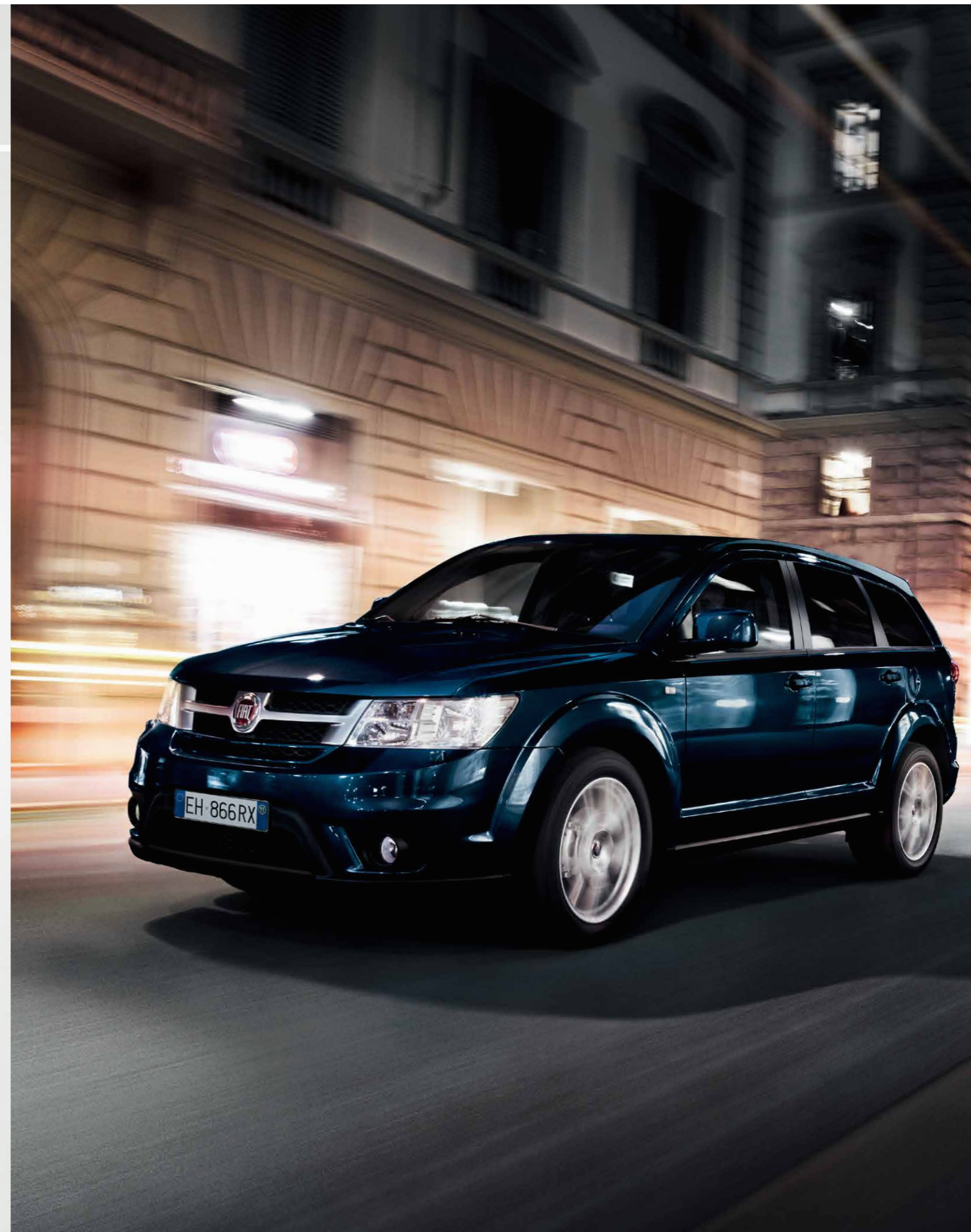
EC MAX. POWER HP at rpm	170 @ 6,000
EC MAX. TORQUE: Nm at rpm	220 @ 4,000
DRIVE TYPE	Front-Wheel
GEARBOX	6-speed automatic
CONSUMPTION (l/100 KM) combined cycle	9.9
Co <sub>2</sub> EMISSIONS (g/km)	233
ACCELERATION (s) 0-100 km/h	13.3
TOP SPEED (km/h)	182
EMISSIONS LEVEL	Euro 6

# FROM FREEMONT



## FREEMONT. ALL THE SAFETY YOU WANT.

In addition to delivering excellent performance, Freemont is designed to keep you safe. Because freedom also means keeping pace with safety, and Freemont has been awarded the prestigious five-star Euro NCAP rating. This recognition was achieved by its many safety features, including six airbags, three-point seat belts, the Isofix system on the second row seats, active headrests with anti-whiplash system and child boosters to ensure that your children are correctly seated and optimise the seat belt geometry. What is more, for full protection on the road, Freemont fits Hill Holder for assisting starting uphill, ERM (Electronic Rollover Mitigation) and TPMS (Tyre Pressure Monitoring System) to detect the pressure of each individual tyre at all times in addition to ABS and ESC. Trust the TSC (Trailer Sway Control) to transport your load in total safety.



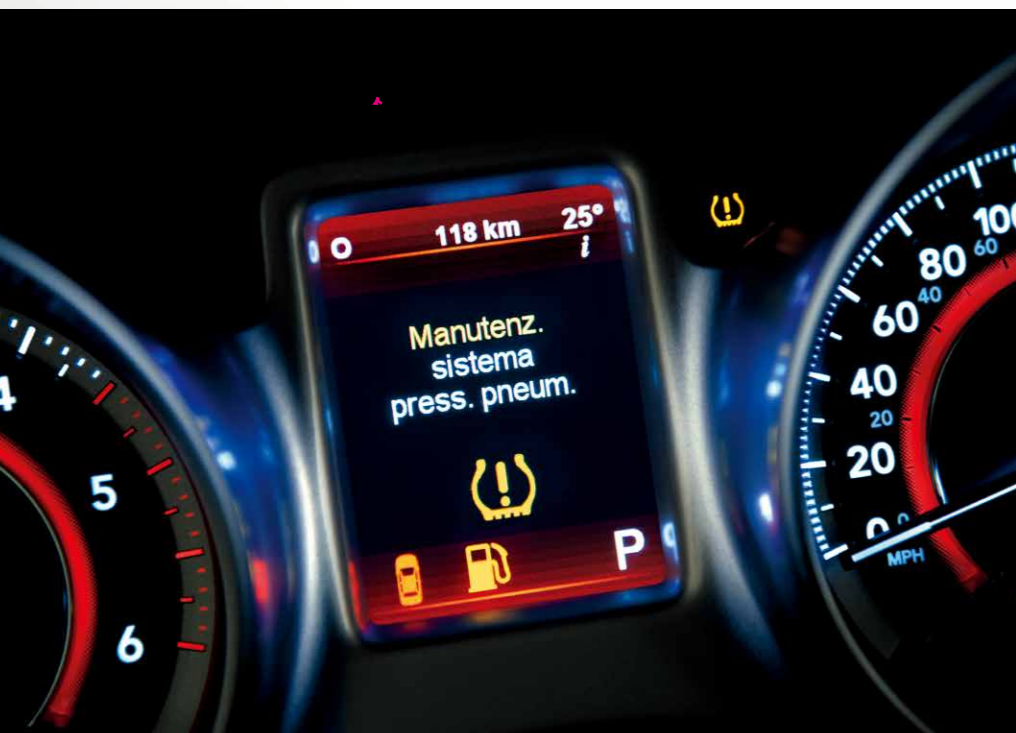
**FREEMONT.** ALL THE TECHNOLOGY YOU WANT.

Driving Freemont also means having the best technology at your fingertips. Like the Keyless system to open the doors and start the engine at the press of a button located on the dashboard. To make manoeuvring easier, Freemont fits parking sensors which are activated when you shift into reverse.

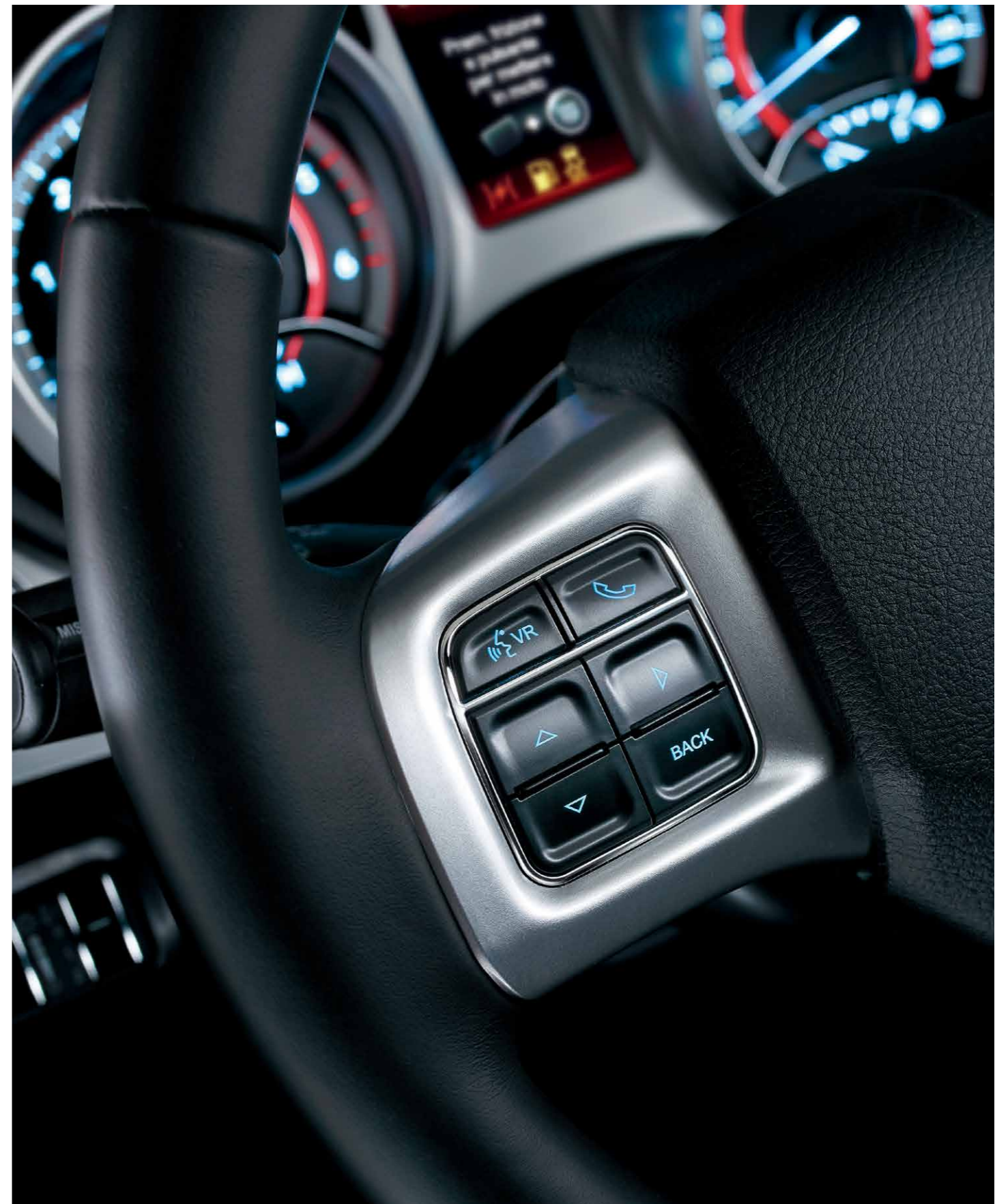


Have fun and keep in touch on the road. Everything is possible with Freemont. You can listen to your favourite music on the integrated CD/MP3 radio with 8.4" colour touchscreen and steering wheel controls. Just tap on the screen to control the vehicle's many functions, including the temperature settings for the three climate-controlled areas and stereo system adjustments.

And with Bluetooth® connectivity you can make hands-free calls, managing your phonebook without ever taking your hands off the wheel, and listen to your music through streaming by connecting your device with the Uconnect® system. Freemont also has a handy USB port and an AUX-IN socket to connect your devices.



**FREEMONT.** ALL THE TECHNOLOGY YOU WANT.





**FREEMONT.** ALL THE STYLE YOU WANT.



Do not compromise. The Freemont trim level is packed with standard equipment: seven seats with real third row, child boosters, three-zone automatic climate control, Trip Computer with compass, Cruise Control, Keyless entry system, 17" alloy wheels, fog lights, TPMS technology, ESC with Hill Holder and ERM (Electronic Rollover Mitigation) system, USB port and AUX-IN socket, CD/MP3 radio with 8.4" colour touchscreen and steering wheel controls.



**FREEMONT.** ALL THE STYLE YOU WANT.

Even more comfortable and practical, the equipment of the Freemont trim level, fits: CD/MP3 radio with 8.4" touchscreen, SD slot, Bluetooth ® technology, automatic headlight activation, electrochromic mirror, leather steering wheel and gear lever knob, rear parking sensors, six-way electrically adjustable driver's seat and four options for lumbar adjustment and electrically folding door mirrors.



FREEMONT. ALL THE STYLE YOU WANT.



FREEMONT. ALL THE STYLE YOU WANT.



Freemont is packed with equipment, but if this is not enough, you can always customise it to suit you. Find out more about all the accessories you can use to make your Freemont even more unique and make every journey an unforgettable one.

Style:

- Chrome-plated side mouldings
- Chrome-plated tailgate moulding
- Chrome-plated mirror covers
- Kick plate with Freemont logo
- Protective carpet mats with the Freemont logo
- Chrome-plated 19" alloy wheels
- Side skirts
- Rear spoiler

Leisure:

- Crossbars
- Bicycle / ski / snowboard / canoe / windsurfing board rack
- Freebox
- Fixed or removable rear tow hook
- Tow bar mounted bicycle carrier
- Protective rubber mats with the Freemont logo
- Luggage compartment guards

Functionality:

- Anti-theft wheel bolts
- Side air deflectors
- Rear mud guards
- Front and rear parking sensors
- Luggage cover

Family:

- DVD system integrated on roof
- Child restraint systems



## FREEMONT. ALL THE STYLE YOU WANT.

The Freemont gives full vent to your personality: the new, extended range of pastel, metallic and three-layer colours allows you to convey your style by choosing the colour that best expresses your lifestyle and combining it with fabric or elegant black or sand leather interior.

White



PASTEL  
COLOUR

Black



Billet Silver



METALLIC  
COLOURS

Granite Crystal Grey



Fathom Blue



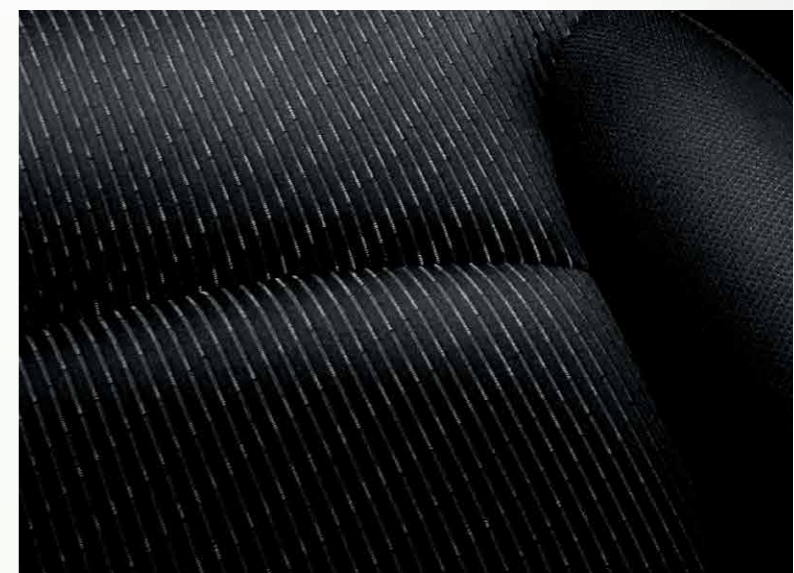
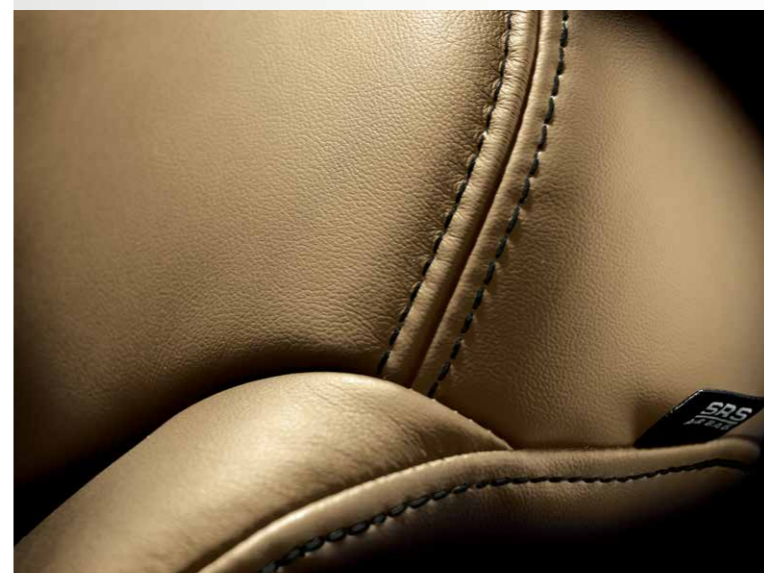
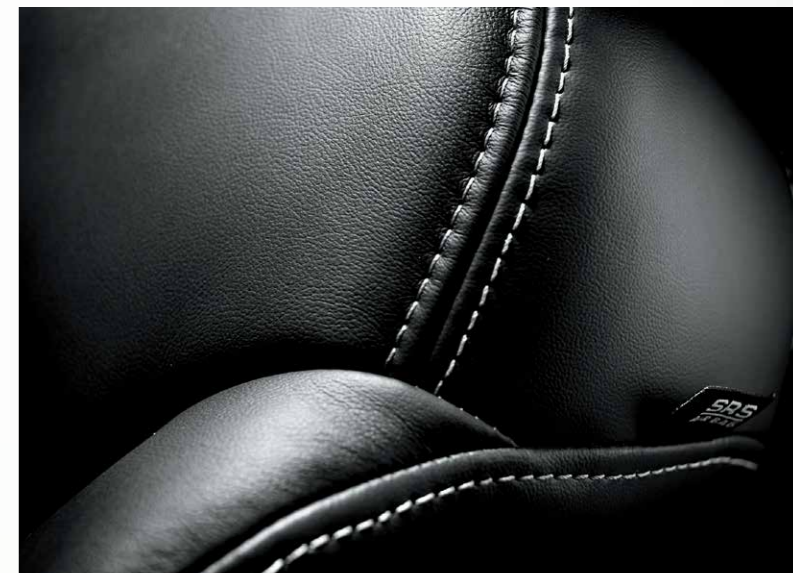
Redline



Pearl White



THREE-LAYER  
COLOURS



TECHNICAL SPECIFICATIONS

	2.4L DOHC 16V Dual VVT 170 HP Petrol
	Freemont 2.4 FWD
ENGINE	
No. of cylinders, layout	4, in line
Bore × stroke (mm)	88 x 97
Displacement (cm³)	2,360
Emissions level	Euro 6
Compression ratio	10.5
EC max. power: HP at rpm	170 @ 6,000
EC max. torque: Nm at rpm	220 @ 4,500
Fuel supply	Sequential Multipoint with variable injection Timing
TRANSMISSION	
Drive type	front
Gearbox: no. of speeds	6-speed automatic
STEERING	
Type	Hydraulic rack and pinion
Min. turning circle, k(erb) to k(erb) (m)	11.7
BRAKES - D (DISC)	
Front: Ø mm	D 330 (ventilated)
Rear: Ø mm	D 328
SUSPENSION	
Front	Independent, MacPherson type with anti-roll bar
Rear	Independent, Multilink type with wishbones, anti-roll bar, coil springs and telescopic shock absorbers
DIMENSIONS	
Wheelbase (mm)	2,890
Length / width (mm)	4,910 / 1,878
Height (mm)	1,705
Front / rear track (mm)	1,571 / 1,582
Front / rear overhang (mm)	1,005 / 1,015
LUGGAGE COMPARTMENT VOLUME (dm³)	
7 seat configuration:	167 (to roof)
5 seat configuration:	758 (to roof)
2 seat configuration:	1,461 (to roof)
WHEELS	
Tyres	225/65 R17
WEIGHTS - CAPACITIES	
Unladen weight (kg)	1,812
Kerb weight (kg)	2,404
Fuel tank (litres)	77.6
PERFORMANCE	
Top speed (km/h)	182
Acceleration (s) 0-100 km/h	13.3
CONSUMPTION	
(Directive 2004/3/EC) (l/100 km)	
Urban cycle / extra-urban cycle / combined cycle	13.7 / 7.7 / 9.9
CO <sub>2</sub> emissions (g/km)	233

EQUIPMENT

	Freemont
LINE AND STYLE	
Chrome-plated exhaust tailpipe	■
17" alloy wheels	■
Leather steering wheel and gear lever knob	■
Metallic paintwork	210 ○
Three-layer paintwork	802 ○
Leather interior (including heated front seats)	○
COMFORT / FUNCTIONALITY	
Automatic Dual-zone climate control	■
Illuminated cup holders	■
12 V socket in the front armrest compartment	■
Cruise Control	■
Keyless entry (automatic door opening system)	■
Keyless go (automatic keyless starting system)	■
Door locking/unlocking remote control	■
Trip Computer with compass	■
Heated electric door mirrors	■
Electric heated folding door mirrors	■
Seven seat configuration (includes fold-away third row with individual seat folding and adjustable sliding second row seats)	■
Foldable passenger seat with storage compartment	■
Electrically operated driver's seat adjustable in 6 directions	■
Electric driver's seat lumbar adjustment in 4 directions	■
Light sensor and rear parking sensors	■
Electric sun roof	575 ○
Fix&Go	■
SAFETY	
Fog lights	■
TPMS (TYRE PRESSURE SENSOR)	■
ESC + Hill Holder (BPS) + Rollover Mitigation	■
Side bags	■
Side window bags	■
Child restraint system attachments (ISOFIX)	■
ABS	■
Front anti-whiplash head restraints	■
Child boosters (boosters integrated with the 2 <sup>nd</sup> row of seats)	○
Security alarm system	■
AUDIO / TELEMATICS	
Audio controls on the steering wheel	■
8.4" touchscreen CD/MP3 radio with SD player	■
USB and AUX-IN Input	■
SD card reader	■
Rear parking assistance camera	○

■ standard    ○ optional

CONFIGURATIONS





[www.fiat.com.hk](http://www.fiat.com.hk)



Hong Kong Showroom: G/F, 173-174, Gloucester Road, Wanchai, Hong Kong  
Kowloon Showroom: B1 Miramar Shopping Centre, Tsim Sha Tsui  
Macau Showroom: Rua dos Pescadores, No. 354-408, R/C, C-D, Macau

Tel: (852) 2960 9288  
Tel: (852) 2960 9288  
Tel: (853) 2872 1222



Like us on  
[facebook.com/FiatHK](https://facebook.com/FiatHK)

"Data, descriptions and illustrations are intended solely as a guide and product characteristics may differ from those represented, sometimes for manufacturing reasons. Fiat reserves the right to make any changes to its products. Some of the items described and photographed in the leaflet are options. See the price list for full details."