

# 2016 FIAT® 500/500c

## CLASSIC STYLE, FUEL EFFICIENT & FUN

CANADA'S MOST AFFORDABLE CABRIO



### OUTSTANDING PERFORMANCE

- 1.4L MultiAir® I-4 engine with 101 hp and 98 lb-ft of torque
- 1.4L MultiAir I-4 Turbocharged engine with 135 hp and 150 lb-ft of torque standard on 500 Turbo
- Exceptional fuel economy, as good as 5.9 L/100 km (48 mpg) highway\*
- Sport mode offers a unique, more responsive driving experience

### DESIGNED WITH PURPOSE

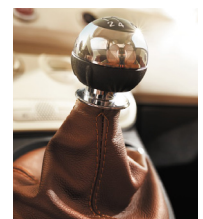
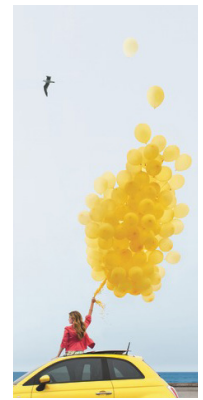
- 15 paint colours to choose from
- Sophisticated interiors
- Bifunctional halogen projector headlamps
- Panoramic glass roof\*
- Stylish body-colour dash
- All-new light pipe feature on centre console

### TECHNOLOGY THROUGH-OUT

- New Uconnect® 5.0 multimedia centre with hands-free communication and Bluetooth® streaming audio<sup>1</sup> – Standard
- 7-inch customizable in-cluster display centre<sup>+</sup>
- SiriusXM Satellite Radio with one-year subscription<sup>2+</sup>
- BeatsAudio™ Premium Sound System<sup>+</sup>
- Premium Alpine® Audio System<sup>+</sup>
- GPS Navigation with turn-by-turn directions<sup>3+</sup>

### SAFETY & SECURITY

- Seven standard air bags<sup>4</sup>
- Electronic Stability Control<sup>5</sup> with Hill Start Assist, Traction Control, and Electronic Brake-Force Distribution
- Tire pressure monitoring system
- Rear Park Assist<sup>6</sup> (available on select hatchback models, standard on Cabrio)



fiatcanada.com

\* See back for full details + Available feature

# 2016 FIAT® 500/500c

500 Pop	\$17,495 MSRP†
500c Pop	\$21,495 MSRP†

## Select standard equipment:

### Powertrain & Performance

- 1.4L 16V MultiAir® I-4 with 5-speed manual
- 1.4L 16V MultiAir I-4 with 6-speed automatic

### Interior

- Uconnect® 5.0 multimedia centre with hands-free communication and Bluetooth® streaming audio¹
- Media hub with USB and auxiliary input jack and 12-volt auxiliary power outlet
- Body-colour instrument-panel bezels
- Cloth seats
- Driver and front-passenger seat with memory return
- Electronic Vehicle Information Centre (EVIC)
- Power windows, front one-touch down; power locks
- Rear cargo shelf panel
- Manual driver's seat height adjuster
- USB charging port in console
- Rear 50/50 split-folding seat
- Tilt steering column
- Leather-wrapped steering wheel with mounted audio and cruise controls

### Exterior

- 15-inch wheels with wheel covers & P185/55R15 all-season tires
- Bifunctional halogen projector headlamps
- Body-colour fascia and power, heated mirrors
- Chrome exhaust tip and exterior door handles
- Engine cover with FIAT badging
- Power retractable soft top (Cabrio)

### Safety & Security

- 7 Air Bags⁴
- Aspheric driver exterior mirror
- Electronic Stability Control (ESC)⁵ with Hill Start Assist, Traction Control and Electronic Brake-force Distribution
- Engine block heater
- Four-wheel disc antilock brakes with Brake Assist
- Reactive front head restraints⁷
- Rear Park Assist⁶ (Cabrio)
- Remote keyless entry
- Sentry Key® anti-theft engine immobilizer
- Tire pressure monitoring display and tire service kit

500 Sport	\$20,495 MSRP†
-----------	----------------

### Enhancements vs. Pop:

- 7-inch customizable in-cluster display
- 16-inch polished aluminum wheels with technical grey pockets and red accented centre caps
- P195/45R16XL all-season tires
- Air conditioning with micron filter
- Chrome shift knob
- Fog lamps
- Leather-wrapped sport steering wheel
- Overhead passenger-assist handle and passenger armrest
- Red brake calipers, sport suspension and rear spoiler
- Side sills ground effects and unique front and rear fascia
- Security alarm
- Sport cloth seats

500 Lounge	\$22,495 MSRP†
500c Lounge	\$25,895 MSRP†

### Enhancements vs. Pop:

- 15-inch premium Satin Carbon aluminum wheels
- Automatic temperature control
- Alpine® premium audio system
- Auto-dimming rearview mirror
- Body-colour fascia with bright insert
- Bodyside mouldings with 500 logo
- Bright belt moulding and chrome power, heated mirrors
- Chrome shift knob
- Heated leather-faced seats
- Overhead passenger-assist handle (Hatchback)
- Panoramic glass roof (Hatchback)
- SiriusXM satellite radio with one-year subscription³
- Security alarm

500 1957 Edition	\$24,495 MSRP†
------------------	----------------

### Enhancements vs. Lounge:

- Body-colour 16-inch aluminum retro wheels
- P195/45R16XL tires
- Brown leather-wrapped door armrest surrounded by unique ivory door insert
- Brown leather-wrapped shift knob
- Front seatback map pockets
- Ivory leather-wrapped steering wheel with brown leather insert
- Retro fascia with bright inserts
- Retro FIAT badging
- Retro Marrone (Brown) leather-faced seats
- Unique brown key fob cover with "1957" graphic
- White exterior mirror caps and white painted roof
- White power, heated exterior mirrors

500 Turbo	\$22,895 MSRP†
-----------	----------------

### Enhancements vs. Sport:

- 16-inch polished aluminum wheels with Gloss Black painted pockets and red accented centre caps
- 135 hp and 150 lb-ft of torque
- 3.35 final drive ratio
- Bolder side sills ground effects
- Gloss black headlamp, taillamp and parking lamp treatments
- Leather-wrapped sport steering wheel and shift knob accented with silver stitching
- Performance 4-wheel disc antilock brakes
- Sport-styled seating with silver stitching
- Sport-tuned single exhaust
- Unique performance-designed front fascia
- Alpine premium audio system

Optional Equipment	Pop	Sport	Lounge	Turbo
Alpine Premium Audio System		●		
Air Conditioning with Micron Filter	●			
Beats Audio™ Premium Sound System			●	●
Comfort & Convenience Group		●		●
Compact Spare Tire	●	●	●	
Leather-faced Seats		●		●
Mopar® Windscreen (Cabrio)	●		●	
Power Sunroof (Hatchback)		●	●	●
Rear Park Assist⁶ (Hatchback)			●	●
SiriusXM Satellite Radio³ with 1-year subscription	●			
GPS Turn-by-turn Navigation		●	●	●
15-inch Tech Silver Aluminum Wheels	●			
15-inch Polished Aluminum Wheels with Tech Silver Pockets			●	
16-inch Polished Aluminum Wheels with Dark Mineral Grey Pockets		●		
16-inch Hyper Black Aluminum Wheels with Black Painted Pockets				●

Fuel Economy Based on 2015 EnerGuide fuel consumption ratings. Government of Canada test methods used. Your actual fuel consumption will vary based on driving habits and other factors. Use for comparison purposes only. Ask your retailer for EnerGuide information.		CITY L/100 KM (MPG)	HWY L/100 KM (MPG)
1.4L 16V MultiAir I-4 Engine	5-Speed Manual Hatchback	7.6 (37)	5.9 (48)
	5-speed Manual Cabrio	7.9 (36)	6.3 (45)
	6-Speed Automatic Hatchback/Cabrio	8.7 (32)	6.9 (41)
1.4L 16V MultiAir I-4 Turbo Engine	5-speed Manual	8.5 (33)	6.9 (41)
	6-speed Automatic	9.6 (29)	7.3 (39)

1. Driving while distracted can result in loss of vehicle control. Only use mobile phones and other devices, even with voice commands, when it is safe to do so. Voice commands of phone require a Bluetooth Compatible Phone. 2. Requires SiriusXM radio subscriptions governed by SIRIUS terms and conditions available at siriusxm.ca. 3. Never program while driving. GPS mapping and available 3D navigation may not be detailed or available in all areas or reflect current road regulations. 4. The advanced front air bags in this vehicle are certified to the federal regulations for advanced air bags. Children 12 years old and younger should always ride buckled up in a rear seat. Infants in rear-facing child restraints should never ride in the front seat of a vehicle with a passenger front air bag. All occupants should always wear their lap and shoulder belts properly. 5. No system can repeal the laws of physics or overcome careless driving actions. Performance is limited by available traction, which snow, ice and other conditions can affect. When the warning lamp flashes, the driver needs to use less throttle and adapt speed and driving behaviour to prevailing road conditions. 6. This is a driver convenience system, not a substitute for active driver involvement. The driver must remain aware of their surroundings and be prepared to take corrective action to avoid collisions. 7. Always sit properly with the head restraint properly adjusted. Never place anything in front of the head restraint. †Prices as shown are MSRP. Excludes freight (\$1,745), air tax (\$100), insurance, registration, license, retailer administration fees, new tire. Duties in Quebec and dealer accessories are not included. Retailer may sell for less.