



DOBLQ





FAMILY SPACE

THE NEW DOBLÒ. UNIQUE FROM ANY PERSPECTIVE.

Safe, comfortable, beautiful, spacious and ecological. It's also fun. The new Doblò is much more than a car: it's a family space, the ideal space for always having everything you need on the road, starting with company. All with a unique, surprising character to experience every day. Just like the style of your family.



A STYLE DEVOTED TO TRAVELLING AND COMPANY.



The new Doblo captures all the beauty of a journey with company: the fun, the energy and the unique combination of plenty of different personalities. Enjoy its unmistakable front silhouette which teams original design with practicality. Its boldest features, such as the side wheel arches, convey a sense of strength and solidity. And to finish off, walk all the way around it: the rear view with its large glazed rear door with the Fiat logo clearly standing out is well worth a final round of applause.



Three-dimensional headlights, wraparound and appealing, including direction indicators.



Door mirrors with built-in direction indicators.



YOU DON'T NEED A SPACESHIP TO TRAVEL THROUGH SPACE.



With the new Doblò, if you're looking for a place to spend time together, you'll find seven seats: all comfortable, welcoming, designed to offer you the utmost luxury in a beguiling setting thanks to the choice of fabrics and colour combinations. Its size affords ample passenger room along with a versatility which - teamed with the driving position - make the new Doblò a genuine multispace. What's more, with the new high roof version, the usage possibilities have truly become limitless.



FAMILY SPACE



SPLIT THE SPACE AND ENHANCE THE COMFORT.

To have everything at hand for everyone, the maximum space is not enough: you also need to organise it properly. This is why the new Doblò has rationalised its interiors with a large number of convenient storage compartments, such as the functional and sturdy shelf above the windscreen and the generous hard pockets on the inside of the front doors.



Swivel opening rear windows (seven seats).



Rear sliding door with electric windows (manual swivel opening on Active).



Storage shelf above the windscreen.



Large passenger side glove compartment.





Five seats and 790 litre luggage space.



Long and flat load platform with folded passenger seat and parcel shelf at lower level.



Split rear seats for bulky luggage.



3 200 litres of luggage capacity by folding the rear seats.



CHOOSE THE WINNING MODULE THAT SUITS YOU.

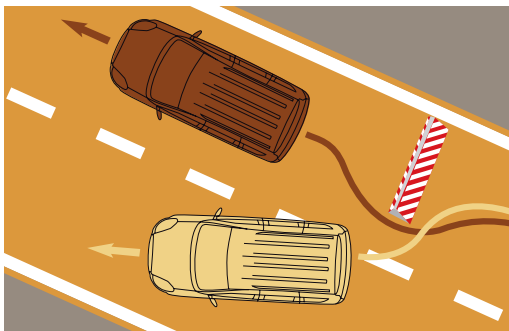
The seven standard seats in the new Doblò really do their utmost to accommodate your most peculiar needs: a multitude of different combinations to try out, folding down the seats depending on the load and number of passengers travelling. The luggage capacity varies from 790 to 3 200 litres (with the rear seats folded down).



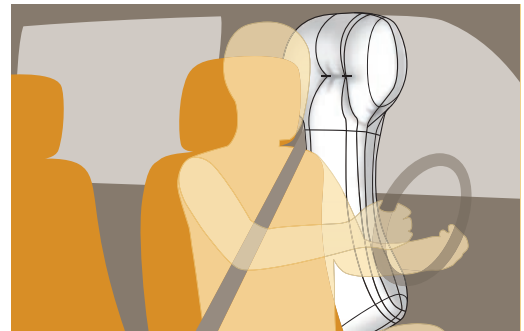
THE MOST PROTECTIVE IN THE FAMILY.



The new Doblò thinks of it all, with the most sophisticated electronic devices for stability control, fitted as standard, such as ABS with electronic brake force distribution EBD and ESP (dynamic stability control) with Hill Holder to help drivers during hill starts. To also achieve the highest levels of passive safety, the new Doblò is fitted with a body with crumple zones and innovative front side bags which, teamed with the front bags, provide protection for both head and chest.



ESP with ASR anti-slip system and Hill Holder



Front side bags to protect head and chest.

PERFORMANCE AND ECONOMY GO HAND IN HAND.

The new Doblò is designed with people in mind. Ecology and economy are the two key words that inspire the choice of engine: a 77kW 1.6 multijet diesel engine. The engine has sparkling performance and smooth power delivery with loads of torque. The best journeys with company are those where you feel safe and your only concern is having fun. For this reason, the new Doblò has teamed a range of high-performance and eco-friendly engines with innovative safety features, such as the rear bi-link suspension, to absorb noise and stresses better, while keeping maximum tyre road grip and perfecting the car's comfort and driving satisfaction.



1.6 105 HP MULTIJET

Displacement (cm³) 1 598

Euro 4

Max. speed: 164 km/h

Consumption: (l/100 km) Urban: 6.1/

Extra-Urban 4.7/combined 5.5

CO₂ (g/km): 145

Power: 77kW @ 4 000rpm

Torque: 290 Nm @ 1 500rpm





Gio 1 Gen
30 H 9 km
18°C 13



THERE'S A NEW GENERATION IN THE FAMILY.

The new Doblo can be fitted with Blue&Me™ TomTom®, the latest-generation removable touch-screen navigation system, which includes all the features of Blue&Me™ and allows the safe use of all the communication and infotainment tools along with constant dialogue with the car.



Blue&Me™ Tom Tom® with eco:Drive Info.



Radio with CD/MP3 player with Blue&Me™ system.



USB Port.

* Standard on Eleganza version.



FAMILY SPACE



INNOVATION AND TECHNOLOGY TRAVEL TOGETHER

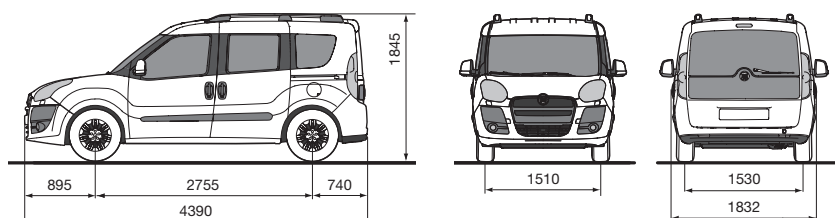
For those who pick the new Doblò, having company is never enough: in addition to your family, you also have all your friends to visit and stay in touch with, by texting or calling them. All this without taking your eyes off the road: which is exactly what the Blue&Me™ system allows you to do. It integrates the various functions of Bluetooth® and the USB interface so that you can listen to music, surf the web and use your mobile phone with a few simple and safe voice commands and buttons on the steering wheel.



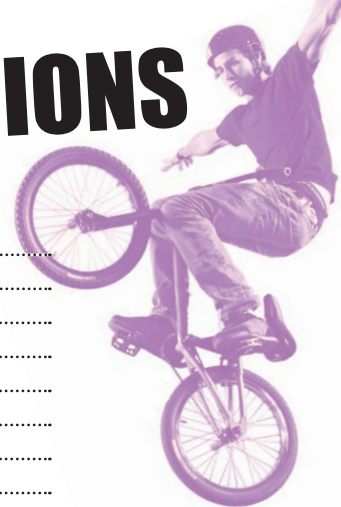
TECHNICAL SPECIFICATIONS

1.6 MULTIJET

ENGINE	
Number of cylinders, arrangement	4, in line, transverse front
Bore x stroke (mm)	79.5 x 80.5
Displacement (cm³)	1 598
Emission standard	Euro 4
Compression ratio	16.5:1
EC max. power: kW @ rpm	77 @ 4 000
EC max. torque: Nm @ rpm	290 @ 1 500
Fuel System	Direct Injection MultiJet (electronically controlled common rail direct injection with turbo and intercooler)
Ignition	by compression
TRANSMISSION	
Drive type	front-wheel
Clutch control	hydraulic
Gearbox: no. of speeds	6+R
STEERING	
Type	rack and pinion with hydraulic power steering
Kerb-to-kerb turning circle (m)	11.2
Brakes – D (disc) – T (drum)	
Front: Ø mm	D305 self-ventilating
Rear: Ø mm	T 254
SUSPENSION	
Front	Independent, MacPherson
Rear	Independent
EXTERNAL DIMENSIONS	
Wheelbase (mm)	2 755
Length/width (mm)	4 390/1 832
Height (mm)	1 845/1 895 (with roof bars)
Front/rear track (mm)	1 510/1 530
Front/rear overhang (mm)	895/740
Luggage volume (dm³)	790/3 200 (with rear seats folded down)
WHEELS	
Tyres	195/60 R16 C 99T
ELECTRICAL EQUIPMENT (12 V)	
Battery capacity (Ah)	72
WEIGHTS – CAPACITIES	
DIN kerb weight (kg)	1 430
Max. towable weight (non-braked) (kg)	500
Max. towable weight (braked) (kg)	1 000
Fuel tank (litres)	60
PERFORMANCE	
Top speed (km/h)	164
Acceleration (s) 0 - 100 km/h	13.4
FUEL CONSUMPTION (l/100 km)	
Urban/extra-urban/combined cycle	6.1/4.7/5.5
CO ₂ emissions (g/km)	145



STANDARD EQUIPMENT AND OPTIONS



	DYNAMIC
LOOKS AND STYLE	
Moulding	S
Metallic paintwork	O
Painted bumpers	S
Painted door mirrors	S
Tinted rear windows	S
16" alloy rims	S
Leather steering wheel and two-tone leather gear lever boot and knob	S
Longitudinal bars for roof rack	S
Style Pack (tinted rear windows, 16" alloy rims, fog lights, painted door mirrors)	S
16" alloy rims	S
COMFORT/FUNCTIONALITY	
Electric front windows + central locking	S
Height- and reach-adjustable steering wheel	S
Power steering	S
Sliding side doors	S
Passenger seat with adjustable backrest	S
60-40 split 'Fold & Tumble' rear seat	S
Fuel filler cap with key	S
Electric rear windows	S
Remote control for door opening/locking + lockable glove compartment	S
Electric door mirrors	S
COMFORT/FUNCTIONALITY	
Automatic climate control	S
7-seater version	S
Luggage compartment cover	S
Driver's seat with height and lumbar support adjustment + arm rest	S
Cruise control	S
Outside temperature sensor	S
Smokers' kit	S
Family configuration (7 seats, swivel opening rear side windows, longitudinal bars for roof rack)	S
SAFETY	
Four sensor ABS with EBD (Electronic Braking Distribution)	S
ESP	S
Front airbags (driver and passenger)	S
Side bags (acting as window bags to protect head and chest)	S
Rear headrests	S
Fog lights	S
Park sensors	S
Dead lock	S
Standard size spare wheel	S
AUDIO/TELEMATICS	
Loud speakers (4 + 2 tweeters)	S
Radio with CD + MP3 player, hi-fi audio system	S
Steering wheel controls	S
Blue&Me™	S
Setup for portable navigation system	S
MYBLUE pack (radio controls on the steering wheel, Blue&Me™, leather steering wheel and gear knob in two-tone leather, radio with CD and MP3 player, setup for portable navigation system)	S

FAMILY SPACE

BODY COLOURS



PASTEL

Ambient White **249**



METALLICS

Flamenco Red **293**



Neoclassical Bordeaux **590**



Chemical Grey **595**



Minimal Grey **612**



Indie Ivory **261**

INTERIOR FABRIC COLOURS



Plancia Grey

DYNAMIC

Pacman Grey 112 - 233

TRIM LEVEL

Dashboard Fascias		Black/Grey
Trim		Pacman Grey
PASTEL		
249	Ambient White	■
METALLIC		
261	Indie Ivory	■
293	Flamenco Red	■
590	Neoclassical Bordeaux	■
595	Chemical Grey	■
612	Chemical Grey	■

■ = Standard





Roof Basket Short/Long Wheel Base

Part#: 50902259/50902260



Three Transverse Bars

Part#: 50902258



Seat Covers: Front/Rear

Part#: 71805886/71805887



Pedal Covers

Part#: 50902239





Removable Towbar/Harness
Part#:50902541/50902771



TomTom®
Part#:71806351



Mudflaps: Front/Rear
Part#:71805919/71805920



16" Alloy Wheel Kit
Part#:50902745

*The above features/images have been used to demonstrate the available accessories.





www.fiat.co.za

DISCLAIMER: This brochure is an official publication of Fiat Group Automobiles South Africa. Pictures shown are for illustrative purposes only and are not necessarily accurate. All the product illustrations, specifications and ranges are subject to change. Fiat Group Automobiles South Africa reserves the right to make alterations and amendments to the described models and services at any time without prior notice or obligation. Products offered for sale may differ from those described or illustrated due to later production changes in specification, components or place of manufacturing. The contents of this brochure are therefore to be treated as representations of the current availability of products and/or products on offer at the time of printing.

Part No. 59033156 | OB 08 14096 August 2014

