



The world's most iconic car is back. A new,
seamless blend of retro and modern styling that
uses the latest technology to deliver a car that's
a pleasure to drive and a pleasure to own.
Introducing Europe's 2008 'Car of the Year',
the new Fiat 500.



2008 EUROPEAN
CAR OF THE YEAR



The Fiat 500 sticker kits are available in a variety of colours.









Key covers are available in 9 different variants matching the body colours or the stickers.

SALUMERIA PANETTIERI

VIA
TERNI

31

In addition to ensuring maximum driving pleasure, the 500 is friendly to the environment. Adhering to stringent European emission standards, the Fiat 500 is available with two petrol engines, the 51kW 1.2 and the 74kW 1.4 16v, and a 55kW 1.3 MultiJet 16v diesel. In fact the 1.3 JTD is the most economical car in Australia* achieving an incredible 4.2 litres per 100km combined cycle^.





* JATO Dynamics March 2008

^ Fuel consumption figures tested under controlled factory conditions. Actual fuel consumption may vary based on driving style and prevailing conditions.

337 Lounge Blue-Ivory/Ivory



Inside, the Fiat 500 is just what you'd expect from an Italian car.
Absolutely stunning with superb attention to detail.

214 Pop Blue/Ivory



International LHD vehicles shown. Vehicles depicted are not reflective of Australian specifications.

201 Pop Red/Ivory Interior



Welcome to your space. The 500 welcomes you with up to 13 interior solutions.

202 Pop Red/Black Interior



International LHD vehicles shown. Vehicles depicted are not reflective of Australian specifications.

With Fiat 500's range of interior options, you can add as much of your own personality as you like.

519 Sport Grey-Black/Black Cloth



Choice of leather or fabric trim for your 500.

460 Sport Red/Black Leather



International LHD vehicles shown. Vehicles depicted are not reflective of Australian specifications.



Leather steering wheel and gear knob combinations.

Ivory Leather




Vintage Leather



Black Leather







The Fiat 500 is the first car with a body length under 3.6m to earn a 5 star Euro NCAP Safety rating - Europe's highest. From reinforced bodyshell to pre-tensioned belts, from active safety devices, such as ABS with EBD, and 7 airbags for all-round passenger protection. In addition, stability and traction control are standard on all Sport and Lounge models.

268



418



Colours

PASTEL

268 Bossa Nova White.

418 Jive Blue.

415



602



METALLIC

415 Mod Blue.

602 Breakbeat Grey.

891 Crossover Black.

891



104



SPECIAL PASTEL

104 Calypso Orange.

111 Pasodoble Red.

294 Cha Cha Cha Azure.

309 Ye Ye Green.

509 Tropicalia Yellow.

703 Punk Grey.

111



294



309



509



703



Upholstery / Interior

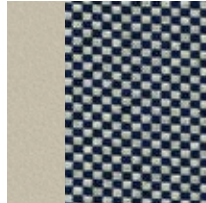
Sport

519

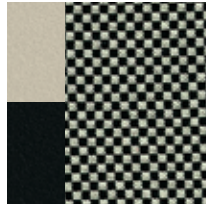


Lounge

337



340



339



201 Red/Ivory.

202 Red/Black.

203 Dark Grey/Ivory.

205 Dark Grey/Black.

214 Blue/Ivory.

408 Black/Black.

496 Red/Ivory.

460 Red/Black.

465 Vintage Leather/Ivory.

519 Grey-Black/Black.

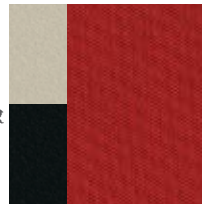
337 Blue-Ivory/Ivory.

340 Black-Ivory/Ivory.

339 Black-Ivory/Black.

Pop

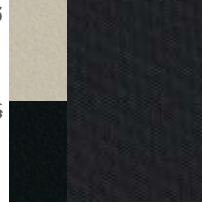
201



202



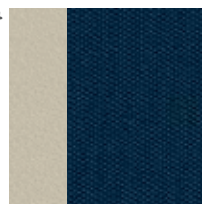
203



205

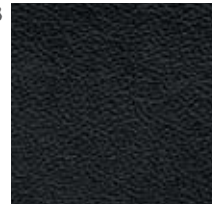


214



Frau Leather

408



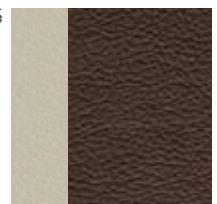
496



460



465



Interior / exterior combinations

		POP					LOUNGE			
		201	202	203	205	214	337	339	340	
	Fabric colour	Red		Dark Grey		Blue	Blue/Ivory	Black/Ivory		
	Interior	Ivory	Black	Ivory	Black	Ivory	Ivory	Black	Ivory	
PASTEL COLOURS										
268 Ambient White		•	•	•	•	•	•	•	-	
418 Jive Blue		-	-	-	-	•	•	-	-	
METALLIC COLOURS										
415 Mod Blue		-	-	•	-	-	•	-	-	
602 Breakbeat Grey		•	•	•	•	•	•	•	-	
891 Crossover Black		-	•	•	-	-	-	•	•	
SPECIAL PASTEL COLOURS										
104 Calypso Orange		-	-	•	•	-	-	•	•	
111 Pasodoble Red		•	•	•	•	-	-	•	•	
294 Cha Cha Cha Azure		•	-	-	•	•	•	-	-	
309 Ye Ye Green		-	-	•	•	-	-	•	•	
509 Tropicalia Yellow		-	-	-	•	-	-	•	-	
703 Punk Grey		•	•	•	-	-	-	•	•	

• Standard - Not Available

* Sport models only available
in 408 (Black/Black) or 460 (Red/Black)
leather options

	SPORT	LEATHER*			
	519	408	496	460	465
	Grey/ Black	Black	Red	Red	Vintage Leather
	Ivory	Black	Ivory	Black	Ivory
	•	•	•	•	•
	•	•	-	-	•
	•	•	-	-	•
	•	•	•	•	•
	•	•	•	•	•
	•	•	-	-	-
	•	•	•	•	-
	•	•	-	-	•
	•	•	-	-	•
	•	•	-	-	•
	•	•	•	•	•

Create your own Fiat 500.
 Visit the Fiat 500 Incubator and
 see all these options come to life.
www.fiat500.com.au



Technical Specifications

500 Engine

Engine	1.2 PETROL POP	1.4 PETROL SPORT LOUNGE	1.3 JTD LOUNGE
No. of Cylinders, Layout	4 in line	4 in line	4 in line
Capacity (cc)	1242	1368	1248
Bore x Stroke (mm)	70.8 x 78.9	72.0 x 84.0	69.6 x 82.0
Compression Ratio	11.1:1	10.8:1	17.6:1
Max. Power (kW)	51	74	55
at rpm	5500	6000	4000
Peak Torque (Nm)	102	131	145
at rpm	3000	4250	1500
Fuel System	Timed MPI sequential electronic		Common rail multijet direct injection, intercooler
Timing Gear	1 OHC, mechanical tappets	2 OHC, hydraulic tappets	2 OHC, rocker fingers with hydraulic tappets
Number of Valves	8	16	16
Ignition	Electronic with static advance combined with ignition		N/A
Dimensions			
Length	3546	3546	3546
Width	1627	1627	1627
Height	1488	1488	1488
Track Front / Rear	1414 / 1408	1414 / 1408	1414 / 1408
Wheelbase (mm)	2300	2300	2300
Luggage Space (litres) Rear Seats Up / Down	185 / 550	185 / 550	185 / 550
Kerb Weight	865	930	980
Payload	440	440	440

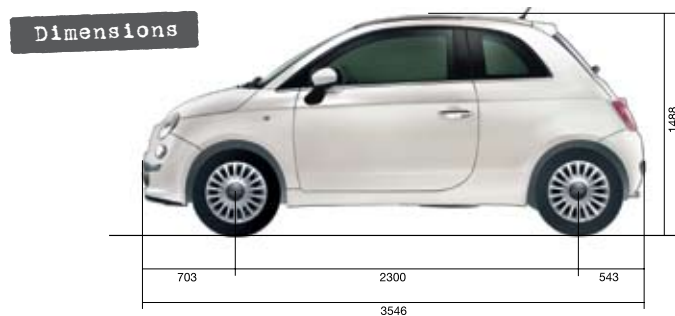
	1.2 PETROL POP	1.4 PETROL SPORT LOUNGE	1.3 JTD LOUNGE
Transmission			
Drive	Front	Front	Front
Manual			
1st	3.909	3.545	3.909
2nd	2.158	2.158	2.158
3rd	1.48	1.48	1.345
4th	1.121	1.121	0.974
5th	0.897	0.921	0.766
6th	-	0.766	-
Reverse	3.818	3.818	3.818
Dualogic Transmission	-	○ (Lounge only)	-
1st	-	3.545	-
2nd	-	2.158	-
3rd	-	1.48	-
4th	-	1.121	-
5th	-	0.897	-
6th	-	-	-
Reverse	-	3.818	-
Performance			
Top Speed (km/h)	170	182	175
Acceleration (0-100 km/h)	12.5	10.7	11.5

■ Standard ○ Optional - Not Available

	1.2 PETROL POP	1.4 PETROL SPORT LOUNGE	1.3 JTD LOUNGE
Fuel Consumption (litres/100km)^			
City Cycle^	6.4	8.2	5.3
Highway Cycle^	4.3	5.2	3.6
Combined^	5.1	6.3	4.2
CO2 Emissions (g/km)	119	149	111
Fuel Tank (litres)	35	35	35
Diesel Particulate Filter	-	-	•
Wheels			
Tyres	175/65 R14	185/55 R15	175/65 R14
Space Saver Space Wheel	■	■	■
Steering			
Rack & Pinion with Hydraulic Power Steering	Rack & pinion with Dualdrive electrical power steering		
Turning Circle (m)	9.28	9.28	9.28
Suspension			
Front	Independent MacPherson with lower wishbones and anti-roll bar		
Rear	Torsion beam rear suspension		
Brakes	ABS with EBD		
Front (mm)	Solid disc 240mm	Ventilated disc 257mm (Sport 284mm)	Ventilated disc 240mm
Rear (mm)	Drum 180mm	Solid disc 240mm	Drum 180mm

^Fuel consumption figures tested under controlled factory conditions.
Actual fuel consumption may vary based on driving style and
prevailing conditions.

Options	POP	SPORT	LOUNGE
Electronic Sky Dome sunroof with sunblind	<input type="radio"/>	<input type="radio"/>	<input type="radio"/>
Chrome Kit (Chrome inserts on side windows, exhaust pipe, front & rear bumper inserts & gear lever surround)	<input type="radio"/>	-	<input checked="" type="checkbox"/>
Luxury Pack (Leather steering wheel and gear knob, Bluetooth phone connection & USB media connection port)	<input type="radio"/>	<input checked="" type="checkbox"/>	<input checked="" type="checkbox"/>
15" Lounge Alloy Wheels (431)	<input type="radio"/>	-	<input checked="" type="checkbox"/>
15" Sport Alloy Wheels (432)	<input type="radio"/>	<input checked="" type="checkbox"/>	-
16" Funky Alloy Wheels (435)	-	<input type="radio"/>	<input type="radio"/>
16" Hot Alloy Wheels (420)	-	<input type="radio"/>	<input type="radio"/>
Metallic Paint	<input type="radio"/>	<input type="radio"/>	<input type="radio"/>
Pastel Paint	<input type="radio"/>	<input type="radio"/>	<input type="radio"/>
Leather Seat	<input type="radio"/>	<input type="radio"/>	<input type="radio"/>
- Black	<input type="radio"/>	<input type="radio"/>	<input type="radio"/>
- Red/Ivory	<input type="radio"/>	-	<input type="radio"/>
- Red/Black	<input type="radio"/>	<input type="radio"/>	<input type="radio"/>
- Vintage Brown/Ivory	<input type="radio"/>	-	<input type="radio"/>



Wheels



[431]
15" Lounge
Alloy



[432]
15" Sports
Alloy

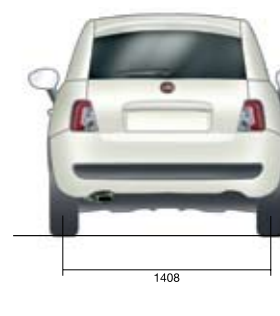


[435]
16" Funky
Alloy



[420]
16" Hot
Alloy

	POP	SPORT	LOUNGE
Decal Options	<input type="radio"/>	<input type="radio"/>	<input type="radio"/>
- 500 Side Stripes	<input type="radio"/>	<input type="radio"/>	<input type="radio"/>
- 500 Roof & Bonnet Stripes	<input type="radio"/>	<input type="radio"/>	<input type="radio"/>
- Roof & Bonnet Barcode	<input type="radio"/>	<input type="radio"/>	<input type="radio"/>
- Italia Side Stripes	<input type="radio"/>	<input type="radio"/>	<input type="radio"/>
- Italia Roof & Bonnet Stripes	<input type="radio"/>	<input type="radio"/>	<input type="radio"/>
- Chequered Roof	<input type="radio"/>	<input type="radio"/>	-
- Twin Roof & Bonnet Stripe	<input type="radio"/>	<input type="radio"/>	-
- No.5 Bonnet Decal	<input type="radio"/>	<input type="radio"/>	<input type="radio"/>



Specifications	POP	SPORT	LOUNGE
Air Conditioning	■	■	-
Climate Control	-	-	■
Air Conditioning			
Trip Computer	■	■	■
Power Windows	■	■	■
Remote Central Locking	■	■	■
Fixed Glass Sunroof with Blind	-	-	■
Sports Instrumentation	-	■	-
Height Adjustable Front Head Rests	■	■	■
Height Adjustable Rear Headrests	■	■	■
Height Adjust Steering Wheel	■	■	■
Height Adjustable Drivers Seat	-	-	■
50/50 Split Fold Rear Seat	■	■	■
Lockable Fuel Cap	■	■	■
Passenger Seat storage	-	-	■
Red Brake Calipers	-	■	-
Chrome Exterior Mirrors	-	-	■
Side Bump Strips	○	■	■
Chrome Kit	○	-	■
Luxury Leather Steering Wheel	○	-	■
Sport Leather Steering Wheel	-	■	-
Leather Covered Gear Knob	○	■	■

	POP	SPORT	LOUNGE
Darkened Tint Rear Windows	-	■	-
Rear Spoiler	-	■	-
Chrome Door Sills & Exhaust tip	-	■	■
Seat Back Pockets	-	-	■
Safety			
ABS with EBD	■	■	■
Dual Stage Driver Passenger Airbags	■	■	■
Side Airbags	■	■	■
Window Airbags	■	■	■
Drivers Knee Airbag	■	■	■
Front Seat Pretensioners with Load Limiter	■	■	■
Anti-Submarining Front Seats	■	■	■
Stability & Traction Control, HBA & Hill Holder	-	■	■
Front Foglights	-	■	■
Audio			
6 speaker MP3 Compatible CD Player	■	■	■
Steering Wheel mounted audio Controls	○	■	■
Bluetooth Handsfree Mobile Connection with Steering Wheel Mounted Controls	○	■	■
USB Media Connection Port	○	■	■

■ Standard ○ Optional - Not Available



www.fiat500.com.au

Dealer Stamp

Fiat cars are imported and distributed by Ateco Automotive Australia Pty Ltd., who reserve the right to alter specifications, equipment and pricing at any time, without warning or notice. Please consult your authorised Fiat dealer for full details as to current pricing, standard and optional equipment, accessories, specifications and availability.

Heritage Building, Campus Business Park, 350 Parramatta Road,
Homebush NSW 2140, Australia
Tel: (02) 9701 8044 Fax: (02) 9701 3544.
Ateco Automotive Pty. Limited. ABN 34 000 486 706.

Printed March 2008.

Part No. FCA071187