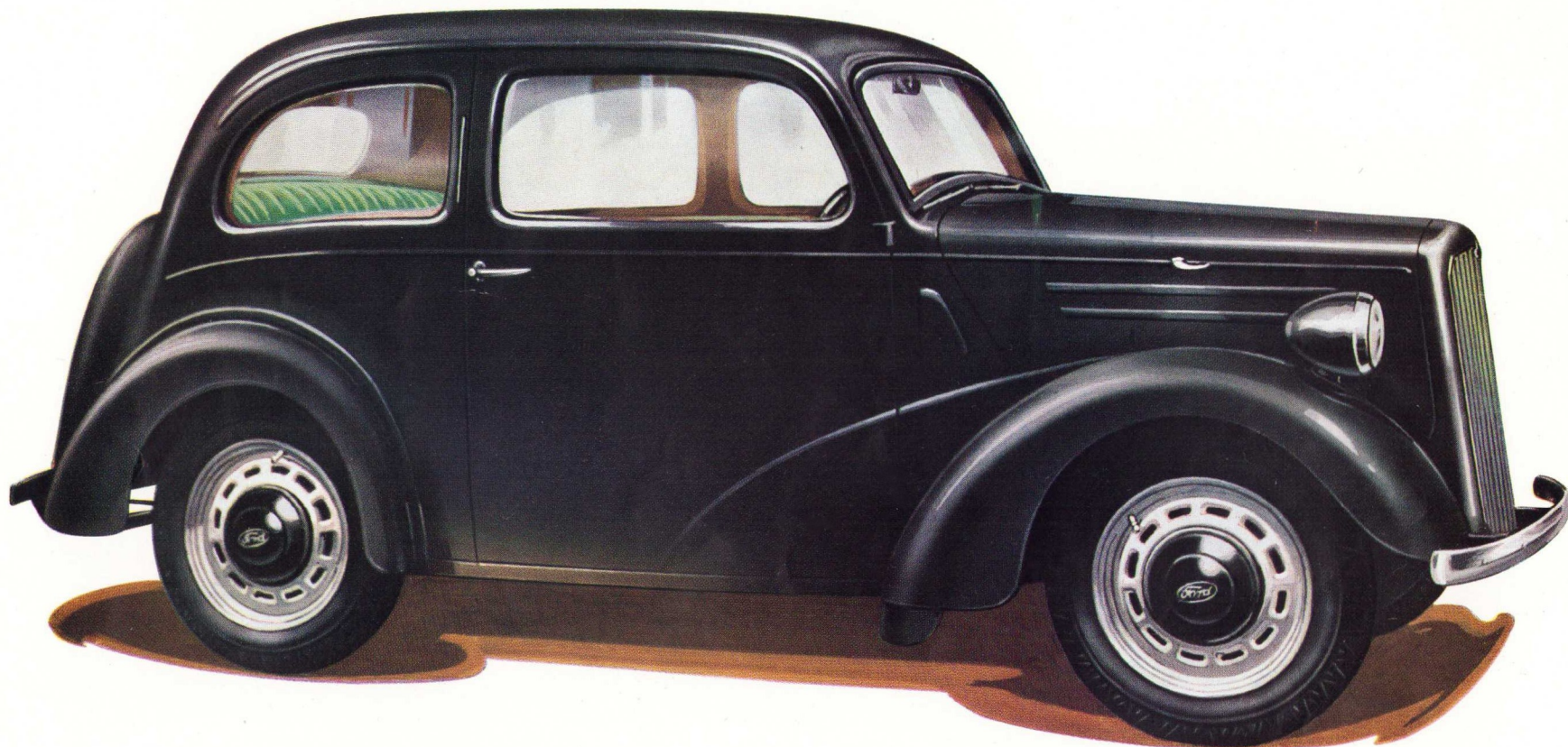


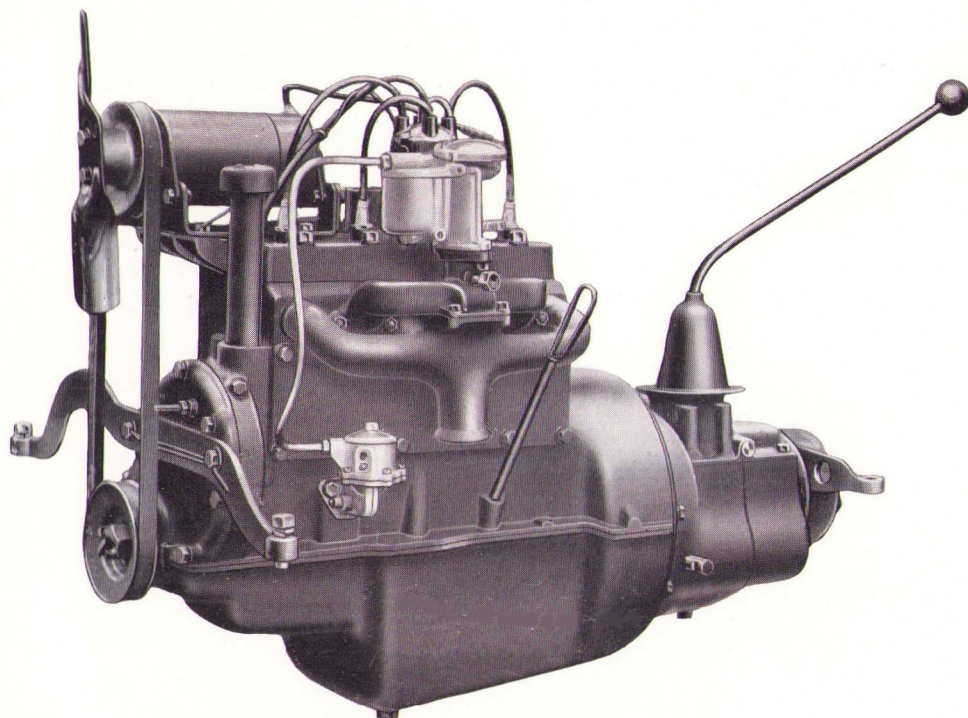
The Anglia



The "Anglia Saloon"



THE "Anglia" is a four-seater saloon, larger than any comparable British car. Driving seat is adjustable. The floor is low without the inconvenience of footwells, and the pistol-grip hand-brake lever is mounted under the dash to provide even more leg room. Luggage is accommodated in a rear compartment which also houses the spare wheel and a kit of tools. Equipment includes dual windscreen wipers and sun visor, improved lighting and electrical fittings. Brakes with 10-inch drums and improved linkage, and newly-designed shock absorbers provide greater road safety.



THE ENGINE

THE fine reputation of Ford cars for trouble-free performance and low running costs is largely due to the precision engineered excellence of Ford engines. The "Anglia" engine incorporates many refinements—the result of long research by Ford engineers—which merit motorists' attention; the three-bearing, counter-weighted cast steel crankshaft; the permanently precision-set valves; the down-draught carburettor with fixed main jet; the light weight pistons; the non-spill oil filler, with bell mouth opening; the engine oil cleaner. These are but a few of the exclusive Ford features that account for efficiency, reliability and economy of this attractive family car. Here is the full specification.

SPECIFICATION

ENGINE—Four cylinder, cast integrally with upper half of crankcase, "L" Head, Bore 2.23 ins. (56.64 mm.), Stroke 3.64 ins. (92.5 mm.), Capacity 56.93 cu. ins. (933 c.c.), B.H.P. 23.4 at 4,000 R.P.M. R.A.C. rating 7.96 H.P. Three bearing statically and dynamically balanced crankshaft. Detachable Cylinder head, chain drive camshaft. Aluminium Alloy pistons. Engine timing pin fitted to cylinder front cover. Four point suspension, on oil resisting rubber mountings. Mushroom ended valve stems. Non-spill oil filler.

ENGINE LUBRICATION—Full pressure feed by submerged gear pump (capacity $\frac{1}{2}$ Imp. gallon (3.41 litres) per min. at 1,000 R.P.M.), to crankshaft main bearings, camshaft bearings, big-end bearings via oil ducts cast in Cylinder block and drilled crankshaft. Gudgeon pins and cylinder walls splash lubricated. Dipstick oil level gauge fitted. Sump capacity 4 Pints (2.55 litres). Engine oil cleaner.

IGNITION—Battery and Coil (Battery accessibly located under bonnet). Automatic advance and retard. Distributor mounted on Cylinder Head. Firing order 1, 2, 4, 3. Condensator caps fitted. Heat resisting and moisture proof H.T. leads.

PETROL SUPPLY—Petrol tank at rear. Capacity 7 Imp. Gallons (31.82 litres). Diaphragm type fuel pump fitted with hand priming device, operated from camshaft. Electrical petrol gauge on Instrument Panel.

CARBURATION—Down-draught type incorporating easy starting device.

COOLING—Thermo-syphon. Two-bladed fan driven by "V" belt. Tube and fin type Radiator. Capacity $1\frac{1}{2}$ Imp. Gallons (6.819 litres). Radiator filler cap under bonnet.

TRANSMISSION—Clutch: dry single plate, spring cushioned. Release bearing: heavy duty ball thrust bearing. Gears: Selective sliding gears synchro-mesh. Three forward speeds, ratios 5.5 to 1, 10.76 to 1 and 18.72 to 1. Reverse 24.48 to 1. Helically cut constant mesh gears. Oil capacity of gear box 1 Pint (.57 litres). Synchro-mesh top and intermediate gears.

REAR AXLE—Ratio 5.5 to 1. Type: Three-quarter floating with radius rod and torque tube drive. Spiral bevel drive pinion and gear. Roller bearings fitted throughout. Oil capacity: 1 Pint approx. Special Ford design universal joint.

FRONT AXLE—"I" beam. Taper roller wheel bearings.

CHASSIS FRAME—Double drop type. Width of flange $1\frac{1}{2}$ ins. (3.81 cm.). Depth 4 ins. (10.2 cm.). Length overall 132.42 ins. (3.363 metres). Three sturdy cross members. Radius rods front and rear, electrically seam and butt welded.

STEERING—Worm and nut type. Ratio 10 to 1. Steering wheel diameter 16 ins. (40.6 cm.), three spokes. Turning circle 34 ft. 9 ins.

SUSPENSION—Springs: Ford transverse design. 9 leaves front 10 leaves rear. Oil-less shackles.

SHOCK ABSORBERS—Double action hydraulic shock absorbers on all four wheels.

WHEELS AND TYRES—Five detachable wheels and tyres. Concealed bolts. Pressed steel type with well based rims. Steel Hub caps. Tyres: 4.50 ins.—17 ins. Pressure 30 lbs. per square inch.

BRAKES—Drums: 10 ins. all round. Four wheel, mechanical; internally expanding, fully automatically compensated. Foot brake on all four wheels. Hand brake on rear wheels only.

ELECTRICAL EQUIPMENT—Ford generator. Normal charging rate 10 amps. Charging regulator 3rd brush. Drive: "V" belt easily adjustable. Electrical horn fitted under bonnet operated from centre button on steering wheel. Starter Motor: Ford Battery: Ford type, located most accessibly under bonnet, 6-volt, 63 amp.-hour.

GENERAL DIMENSIONS—

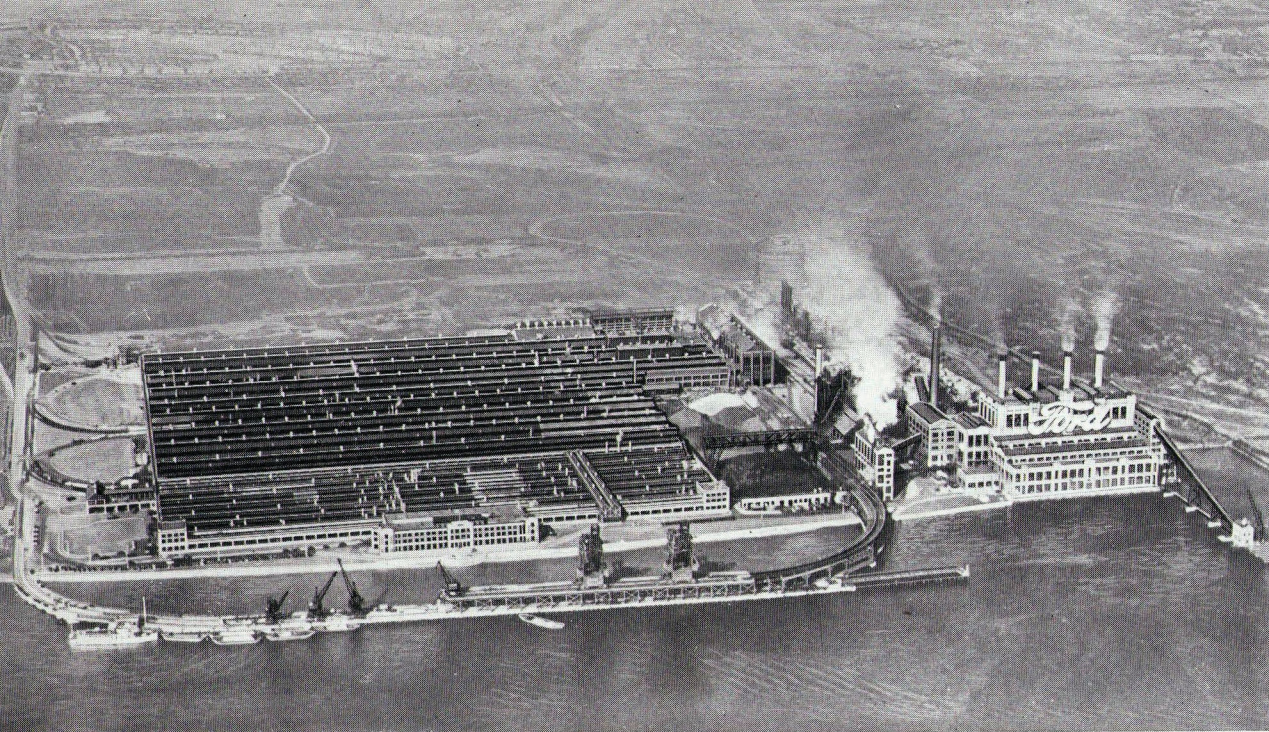
Overall length (including bumpers)	12 ft. 8½ ins. (3.873 metres)
Overall width:	4 ft. 9 ins. (1.448 metres)
Overall height:	5 ft. 3 ins. (1.600 metres)
Ground clearance:	Approx. 6 ins. (0.152 metres)
Weight: (Standard Saloon)	1,570 lbs. (712 kgs.)
Wheelbase:	7 ft. 6 ins. (2.285 metres)
Track:	3 ft. 9 ins. (1.143 metres)

INSTRUMENTS—Are of the Single Cluster Type, mounted on a pleasing design bakelite panel on dashboard. Indirect lighting controlled by switch on belt rail. Electrical petrol gauge. Large diameter speedometer. Zero Ammeter. Full width parcel shelf under belt rail. Combined ignition and light switch. Starter and choke are located at centre of panel. Unique design control knobs. Foot operated headlamp dipper.

BODIES—Welded steel. Cellulose finish. Safety glass windscreen. Leather cloth upholstery. Cloth lined roof. Safety door handles. Lock on one door. Rear view mirror. Adjustable driving seat with 5 in. travel. Front seats Bucket type. Tool compartment with set of tools in rear luggage boot. Mud flaps on front fenders. Luggage and spare wheel compartment at rear, spare wheel housed under luggage compartment floor, accessible from outside of car.

GENERAL EQUIPMENT—Lower dual windscreen wipers. Enamelled moisture proof improved headlamps. Full width, flat section, front and rear bumpers. Tail and stop lights combined. Vacuum tank fitted to dash to improve suction windscreen wiper action. Sun visor.

Ford Motor Company, Limited, whose policy is one of continuous improvement, reserves the right to change the prices, specification and equipment at any time without notice.



FORD WORKS • DAGENHAM

THE Ford factory at Dagenham, where the "Anglia" is manufactured, is the most remarkable industrial undertaking of its kind in the British Empire. Dagenham is more than a factory. It is a complete manufacturing centre. It has its own blast furnace to smelt iron at the rate of 500 tons a day. It has its own great battery of coke ovens. It has one of the most modern by-products

plants in the world. It has a power house capable of supplying electricity to a town of 180,000 inhabitants. Foundry, manufacturing and assembly operations occupy a vast building covering 32 acres under one roof. This seemingly endless series of great shops, packed with high-production and precision machinery of the type evolved and developed by Ford, has no counterpart in Britain.



By Appointment—Motor Vehicle Manufacturers

FORD MOTOR COMPANY LIMITED DAGENHAM



FORD FACILITIES

In every town throughout Great Britain there is a Ford Dealer or Ford Facilities station, to provide prompt and competent maintenance service at low, fixed charges.

MANUFACTURERS' WARRANTY

Purchasers of goods newly manufactured by Ford Motor Company Limited are safeguarded for six months by an express Warranty against faults due to defective material or workmanship.

FREE AFTER-SALES SERVICE

All new Ford cars are given free lubrication, inspection and adjustment service by a Ford Dealer at the first 300 and 1,000 miles, in accordance with the Service Certificate issued with each car.