



SMART



EFFICIENT
VAN

PUT into production to meet the demand for a van to carry the lighter of parcels, and for use in areas where overall dimensions have important bearing upon ability to travel with the minimum of hindrance through dense traffic, the new Ford 5-cwt. van constitutes an entirely new departure, of direct appeal to buyers in an enormous number and considerable variety of trades.

The body-space available is surprising, and the convenience and substance of the bodywork are thoroughly up to Ford standards.

The body lines of the 5-cwt. Van are at once unusual and arresting and the panels lend themselves to advertising to an unusual degree. There are two doors for easy entrance and exit and the spare wheel is carried on the offside or driver's door.

It is very easy to drive and speedy in traffic, due to the synchronised gear change which allows of perfect silent changing. The engine is smooth, powerful, and amazingly dependable. It is, indeed, a Van of outstanding value judged by whatever standards you wish.

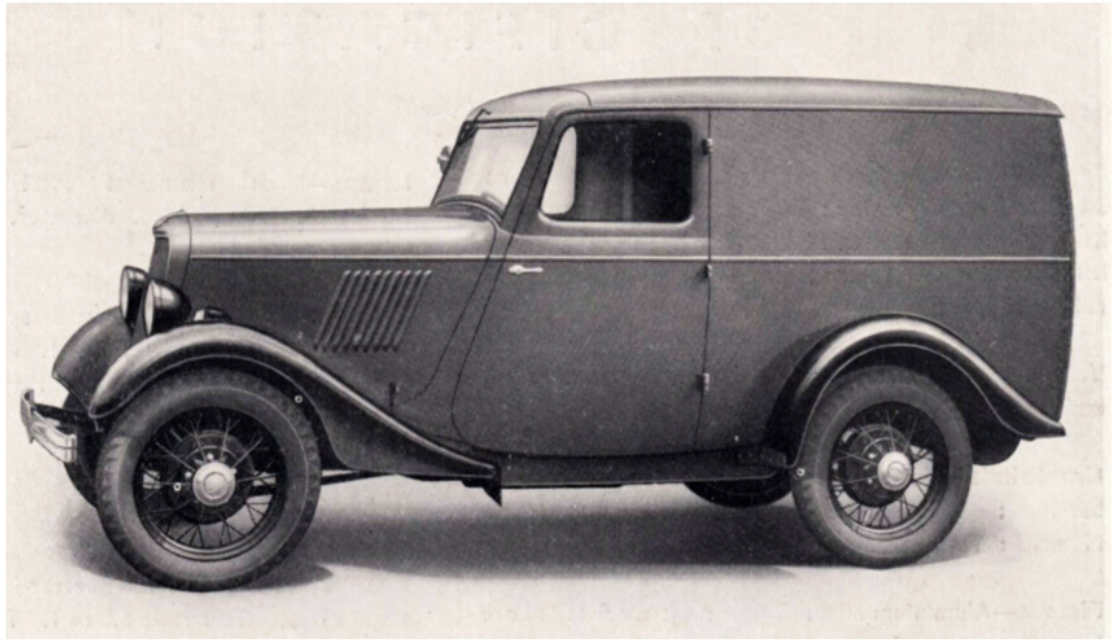
| | Type | Chassis | Rear Wheels | Price | Approx. Weight* | Overall | | | Loading Space | | | Cubic Capacity | Rear Opening | |
|-----------|--------|---------|-------------|-------|-----------------|---------|-------|--------|---------------|--------|--------|----------------|--------------|--------|
| | | | | | | Length | Width | Height | Length | Width | Height | | Width | Height |
| Light Van | 5 cwt. | 90 ins. | Single | £115 | 1,337 lbs. | 11' 8" | 4' 6" | 5' 5" | 4' 3" | 3' 7½" | 3' 3½" | 50 cu. ft. | 3' 6½" | 3' 0½" |

* The weights given are approximate and are taken without petrol, water, spare wheel and tyre, or loose tools, but include spare wheel carrier.
Ford Motor Company Limited, whose policy is one of continuous improvement, reserve the right to change prices, specifications and equipment at any time without notice.

FACILITIES

ALL Ford and Fordson products are backed by a world-wide Facilities Organisation which simplifies and cheapens, enormously, their maintenance in first-class trim. To remain a Ford or Fordson Dealer, every Dealer has to be equipped to furnish Ford and Fordson Facilities at 100 per cent. efficiency.

Every Ford or Fordson Dealer operates under the constant supervision of expert inspectors. He has to maintain a competent, especially trained staff, able promptly and efficiently to execute any maintenance operation at definite, fixed and low charges.



The FORD 5-Cwt. Van

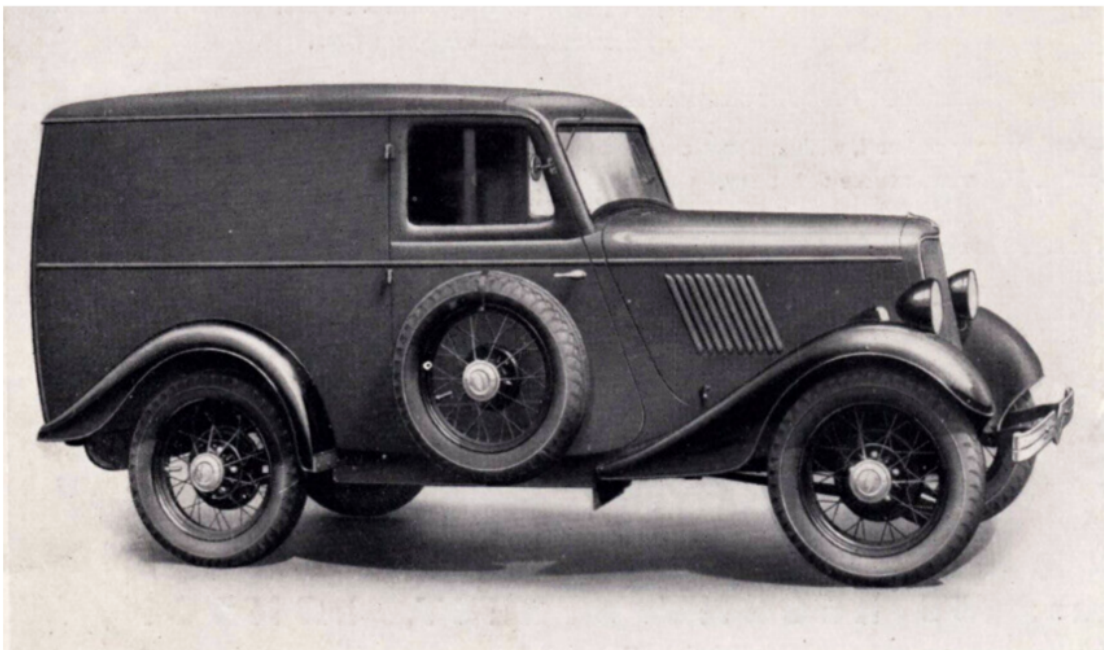
PRICE

£115

*at Works
Dagenham*

EQUIPMENT

Electrical lighting and starting, speedometer, front bumpers, four-wheel brakes, independent hand brake, petrol gauge, spare wheel and tyre, safety glass windscreen, automatic windscreen wiper, driving mirror, and full tool-kit.



SPECIFICATION



Engine—Four-cylindere. Bore : 2.23 ins. Stroke : 3.64 ins. Treasury rating : 7.96 h.p. Detachable cylinder head. Cylinders cast *en block* and together with upper half of crank-case. Engine is three-point suspended, with rubber supports.

Valves—Special silicon chromium steel, with mushroom-ended stems.

Crankshaft—Three main bearings. Diameter of main bearings : 1½ ins. Diameter of crank-pin : 1½ ins. Material : Ford carbon manganese steel.

Pistons—Aluminium alloy. Three rings are fitted above the gudgeon pin. Bottom ring controls oil-consumption.

Gudgeon Pins—Fully floating, in piston and connecting rod. Hollow, 9-16 ins. diameter.

Lubrication—Submerged gear-type oil-pump delivering oil under pressure to camshaft, main and connecting rod bearings. Gudgeon pins and cylinder walls splash-lubricated from troughs beneath big ends. Dip-stick level-gauge fitted.

Cooling System—Thermo-siphon. Two-blade fan of aeroplane propeller design "V"-section fan-belt.

Fuel System—Carburettor : down-draught type. Petrol tank capacity : 6½ gallons. Visible petrol-gauge on instrument board.

Exhaust System—Ford Silencer.

Ignition System—Ford battery and coil, with automatic variation of firing-point. Current source : battery.

Starter Motor—Ford. **Generator**—Ford **Battery**—Ford 6-volt.

Lamps—Black enamelled steel headlamps, with anti-dazzle lenses, 6 ins. diameter. Streamlined side lamps.

Transmission—Three forward speeds and reverse. Ratios : 5.5, 10.76 and 18.72 to 1. Reverse : 24.48 to 1. Synchronised gear-change ensuring easy, silent and certain changes, with helically-cut constant-mesh and second speed pinions.

Clutch—Dry, single plate.

Rear Axle—Ford three-quarter-floating, with spiral bevel drive. Gear ratio 5.5 to 1. Roller bearings fitted throughout.

Front Axle—Ford "I"-section beam.

Foot Brake—Acting on all four wheels. Diameter of cast malleable iron drums, 10 ins. Method of application : Mechanical, internally-expanding. Width of lining, 1½ ins.

Springs—Transverse, made of Ford chrome steel. Front spring 8 leaves, 1½ ins. wide ; rear spring, 10 leaves, 1½ ins. wide. Ford shock-absorbers, easily adjusted and trouble-free, fitted on front and rear axles.

Wheels—Ford electrically-welded wire-spoked wheels. Roller bearings in front hubs. Spiral roller bearings in rear hubs. Well-base rims.

Tyres—4.50 by 17 ins., front, rear and spare.

Steering Gear—Light and positive ; self-aligning.

Wheelbase 7 ft. 6 ins. **Track**—3 ft. 9 ins.



FORD MOTOR COMPANY LTD.
DAGENHAM, ESSEX

PHONE RAINHAM 300

Showrooms: 88 REGENT STREET, LONDON, W.1
PHONE REGENT 7272

F.E. 805-2/933