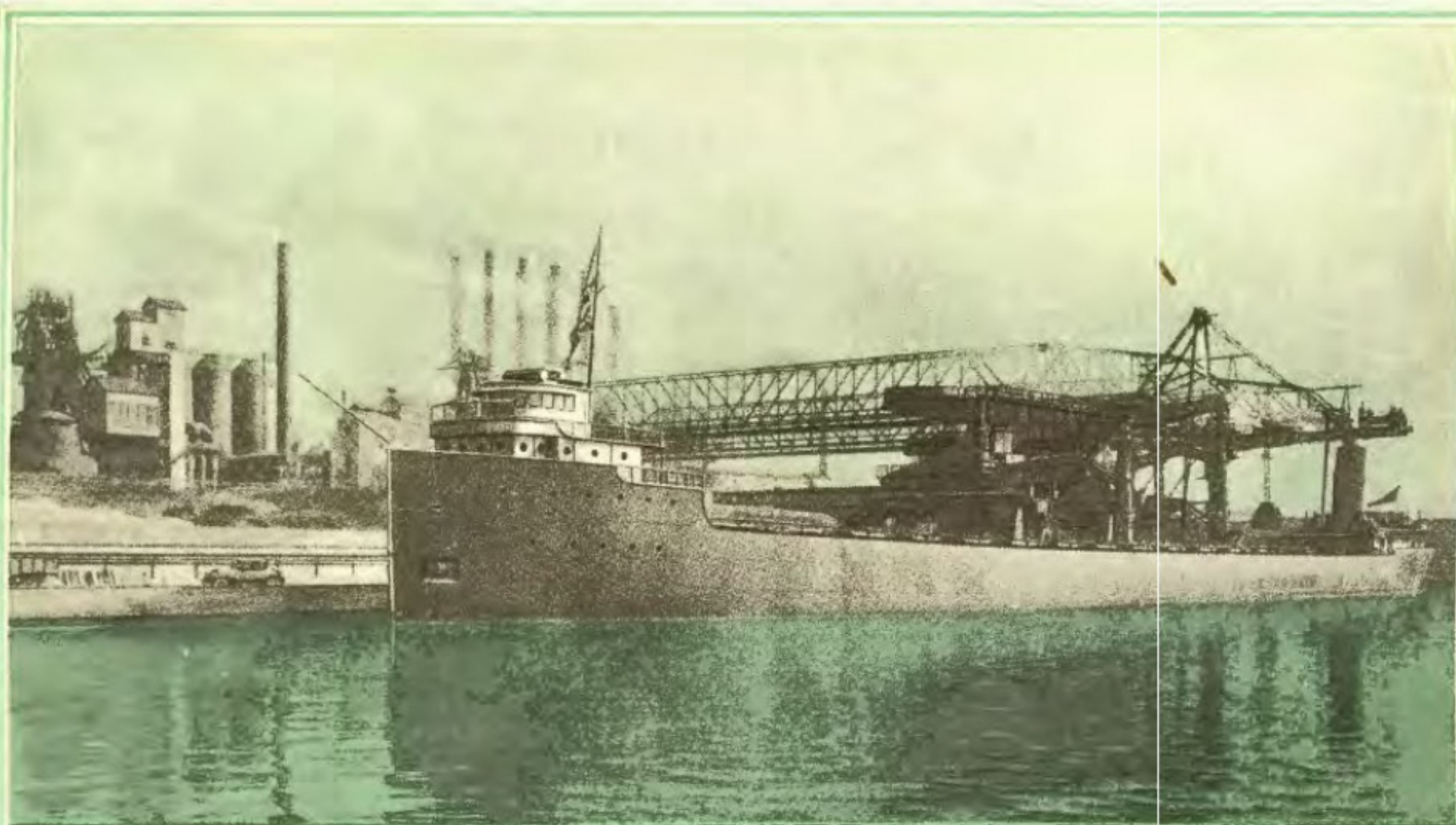


# *Ford* PRODUCTS



*Ford Motor Company*

DETROIT, MICHIGAN



ORE, from the Ford-owned mines in Northern Michigan, being unloaded at the River Rouge Plant of the Ford Motor Company, where it is smelted and refined in Ford blast furnaces



# FORD PRODUCTS



**A** SELF-CONTAINED industry produces Ford Cars, Trucks and Fordson Tractors. It is the Ford industry whose resources go back to the standing timber and the unmined ore. They include Ford-owned coal mines, blast furnaces, glass factories, huge manufacturing units, assembly plants, and an organization of trained men whose combined activities comprehend every phase of human endeavor.

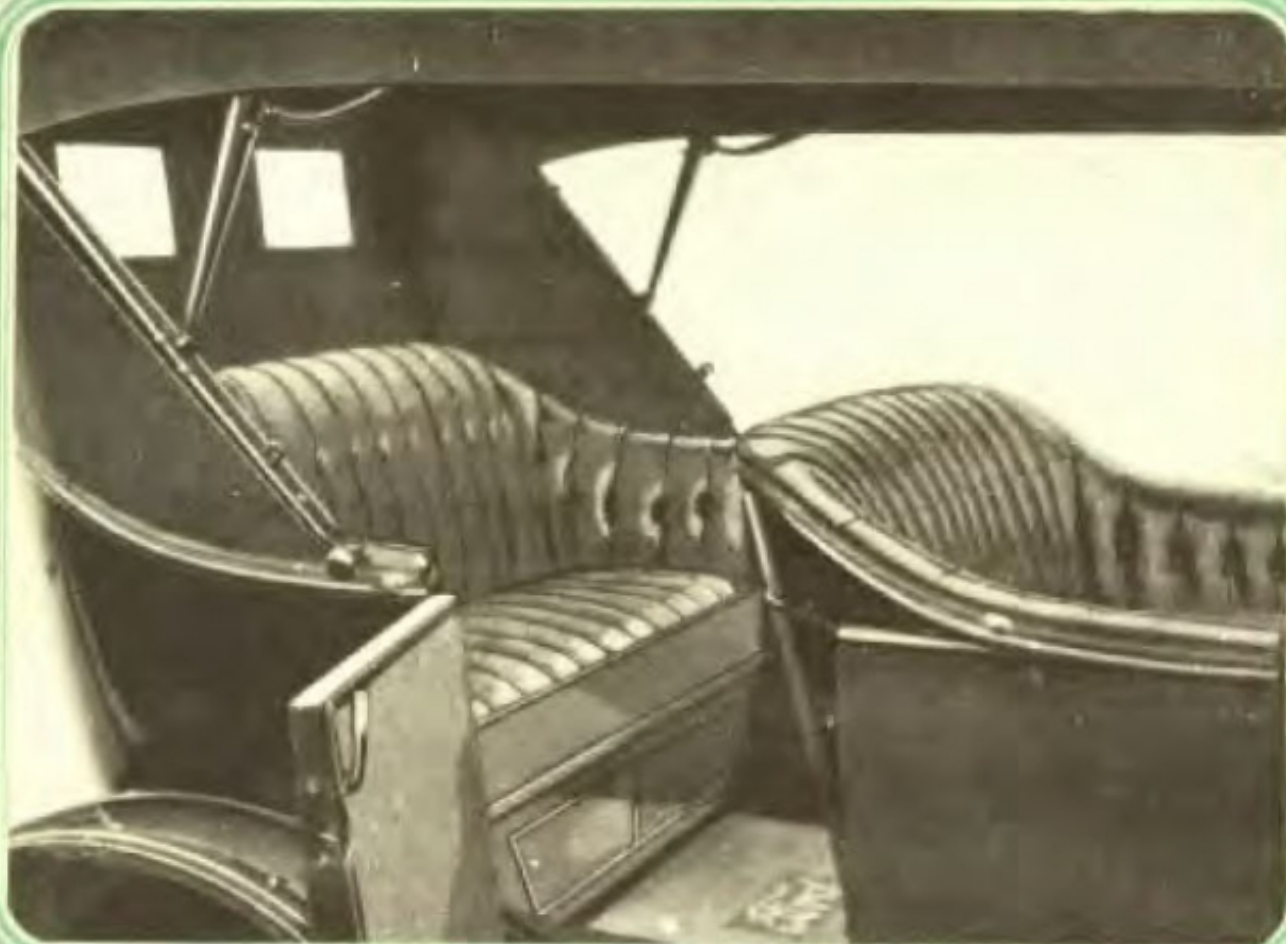
From widely scattered Ford-owned sources, raw materials are brought by Ford transportation units to Ford factories where they are refined, moulded, machined and assembled under the most favorable of industrial conditions, and according to Ford uniformly high standards of manufacture.

Ford production is made possible through vast industrial facilities and a perfect coordination of all phases of manufacture. And, as this industry has grown, new economies have been introduced into Ford production methods. It is because of these facts that Ford products represent such outstanding value.

When you buy a Ford Car, Truck or Fordson Tractor you know that it is the standard product of one of the largest organizations in the world. You know that there are millions of Ford units in daily operation. You know that Ford service facilities stand without equal.

Ford quality and Ford service protect your investment. They insure dependable operation and reliable economy.

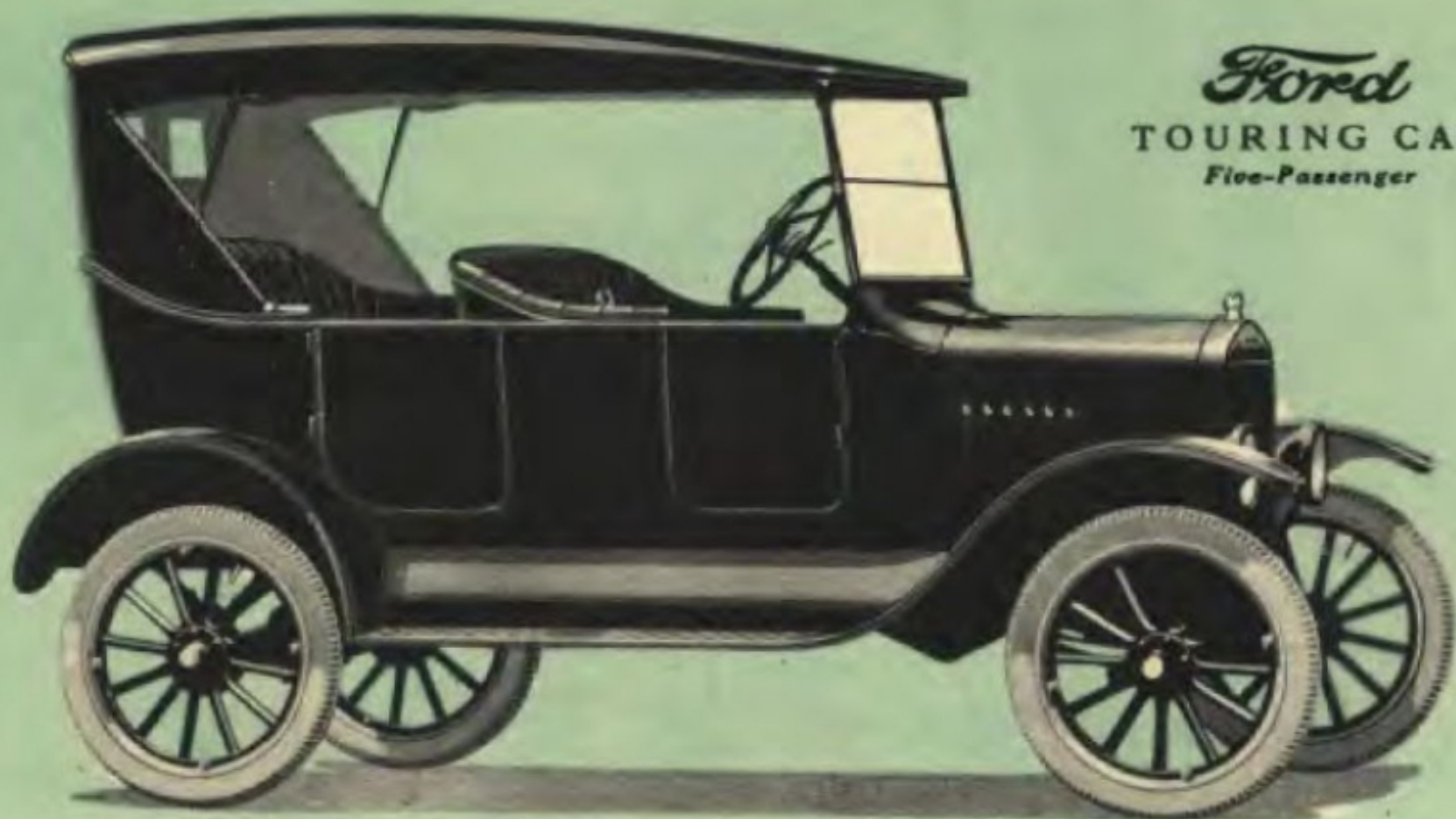




THE TOURING CAR is designed to provide comfort for its occupants. The seats are wide and deeply cushioned. Large doors and plenty of floor space are features of convenience for rear seat passengers

SIMPLICITY of control is an outstanding Ford feature: Anyone can easily learn to drive a Ford





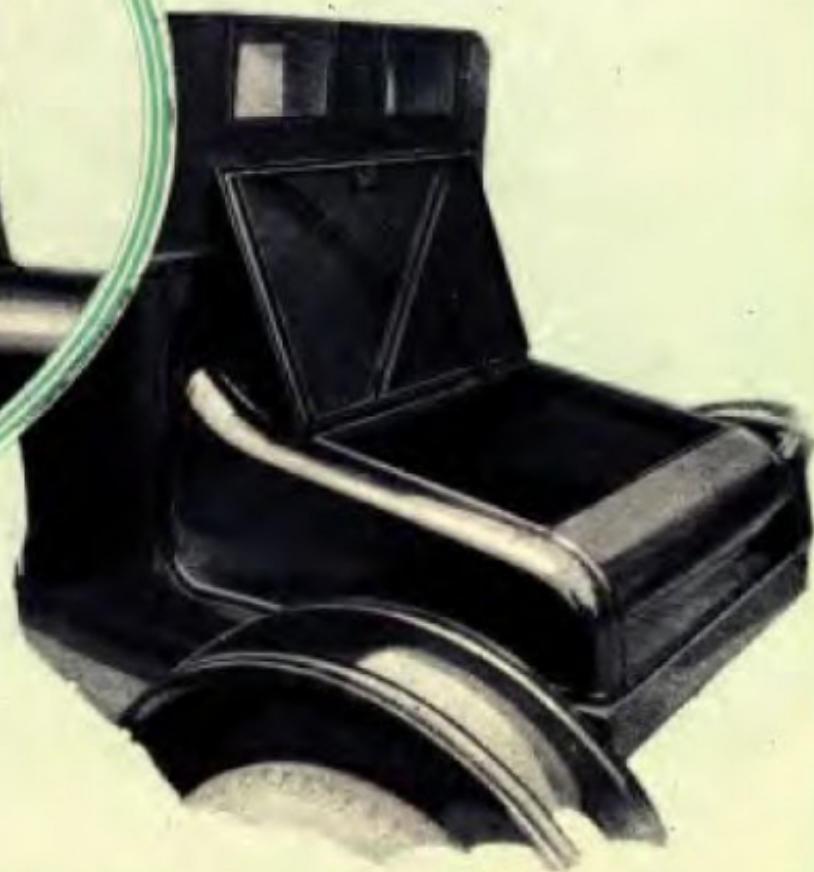
The Universal car for general utility purposes and family use. May be purchased either with or without electric starting and lighting equipment and

with or without demountable rims. A tire carrier with extra rim, and 30 x 3½" non-skid tires, all around, are furnished with demountable rim equipment.





There is a large rear compartment which is very convenient for the stowing of satchels and other luggage



THE FORD RUNABOUT is a salesman's ideal car. Tightly fitted storm curtains afford perfect protection for all-weather driving

*Ford*  
RUNABOUT  
*Two-Passenger*



A practical business utility furnishing individual transportation at a minimum cost. Like the touring car, it may be purchased either with or without starting and lighting

equipment and with or without demountable rims. Demountable rim equipment includes 30 x 3½" non-skid tires, all around, extra rim and tire carrier.





A SPACIOUS rear compartment for baggage adds materially to the usefulness of the Coupe. This compartment is easily accessible through a large opening in the rear deck



THE INTERIOR of the coupe is roomy and comfortable. A recess shelf back of the seat is convenient for carrying a brief case or small parcels

A COWL VENTILATOR, sun visor, and adjustable upper windshield glass are standard equipment on all Ford enclosed body types







*Ford*  
COUPE  
*Two-Passenger*

The Ford Coupe covers a wide range of usefulness. It is well adapted for the personal requirements of the business or professional man, salesman or any

member of the family. Standard equipment includes starting and lighting system, demountable rims, non-skid tires, all around, extra rim and tire carrier.



ALL FORD enclosed cars are equipped with revolving type window regulators. The windows of the Tudor lower flush with the window sills



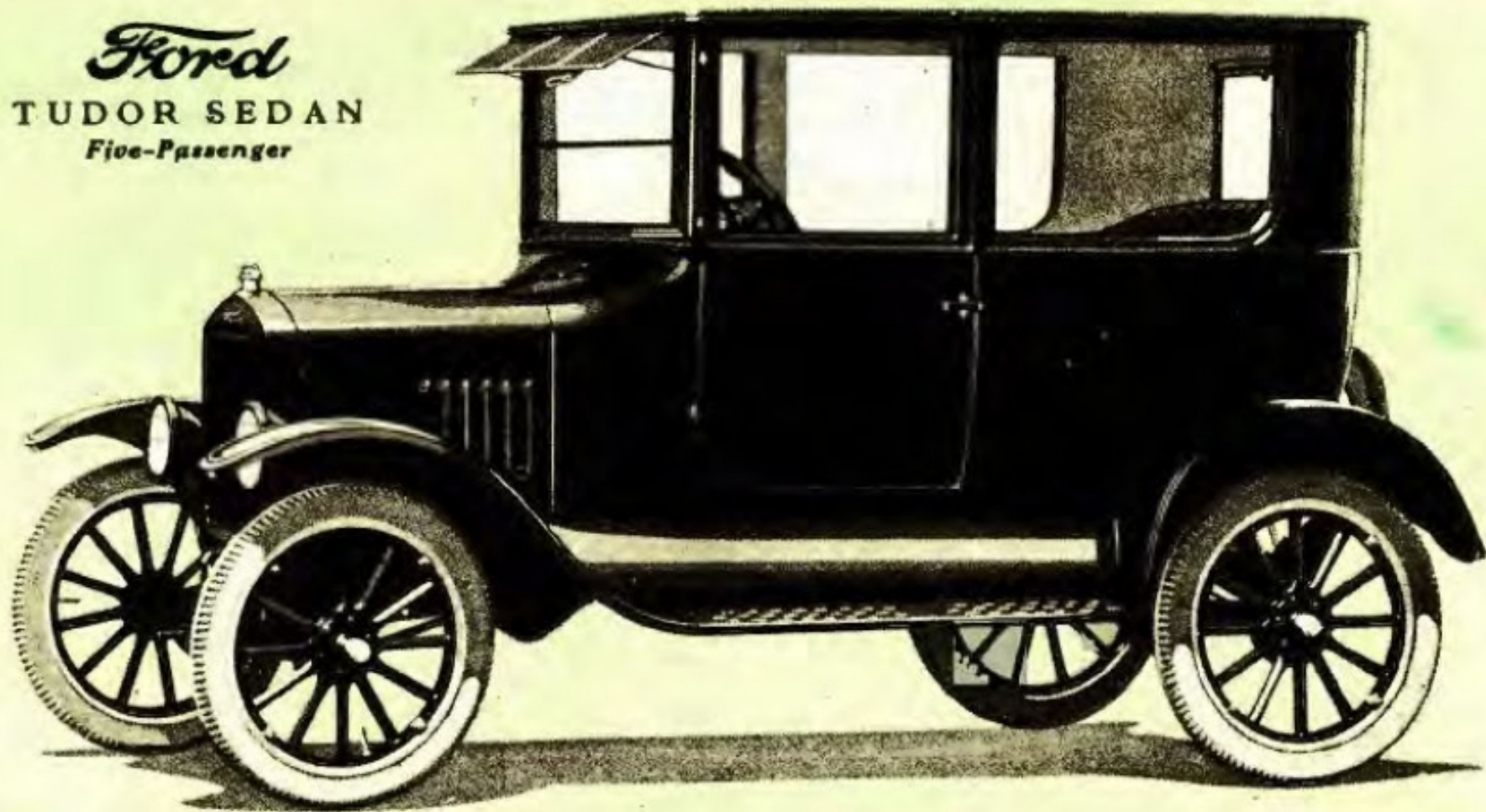
BOTH left and right front seats in the Tudor are broad and deeply cushioned. The driver's seat is of the bucket design accessible from either side of the car

THE TUDOR, a comparatively new Ford body type, has gained wide popularity. It is an ideal car for personal use yet affords ample seating capacity for five persons. The right front seat folds completely out of the way, making it extremely easy for rear seat passengers to enter and leave through the wide door





*Ford*  
TUDOR SEDAN  
*Five-Passenger*



The Tudor Sedan provides enclosed car comfort and utility for five passengers at exceptionally low cost. The straight roof line and well proportioned windows give

this car a very pleasing appearance. Electric starting and lighting, demountable rims, non-skid tires, all around, extra rim and tire carrier are standard equipment.





REAR SEAT WINDOWS are equipped with silk poplin shades. Other equipment of the Fordor includes dome light, rear vision mirror, windshield wiper, dash light and revolving type window regulators. An adjustable windshield and cowl ventilator add further to the comfort of passengers



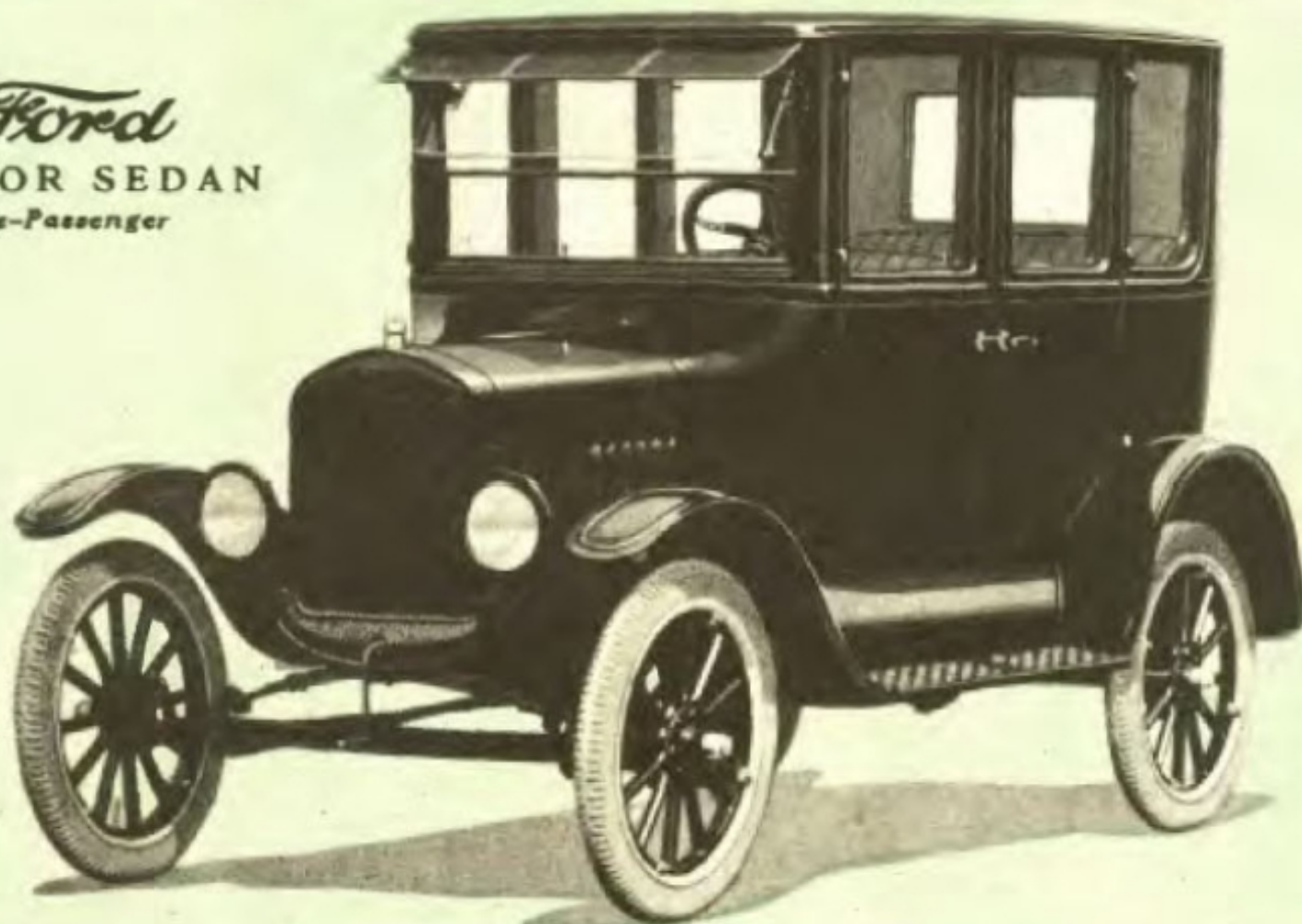
THE FORDOR is an ideal enclosed car for family use. It is sturdy and dependable, comfortable, inexpensive to run and easy to operate

ALL FORD enclosed body doors can be securely locked. The right front door of the Fordor Sedan is equipped with a Yale lock. Other doors have lever type locks operated from the interior. Bar type door handles add to the pleasing exterior appearance





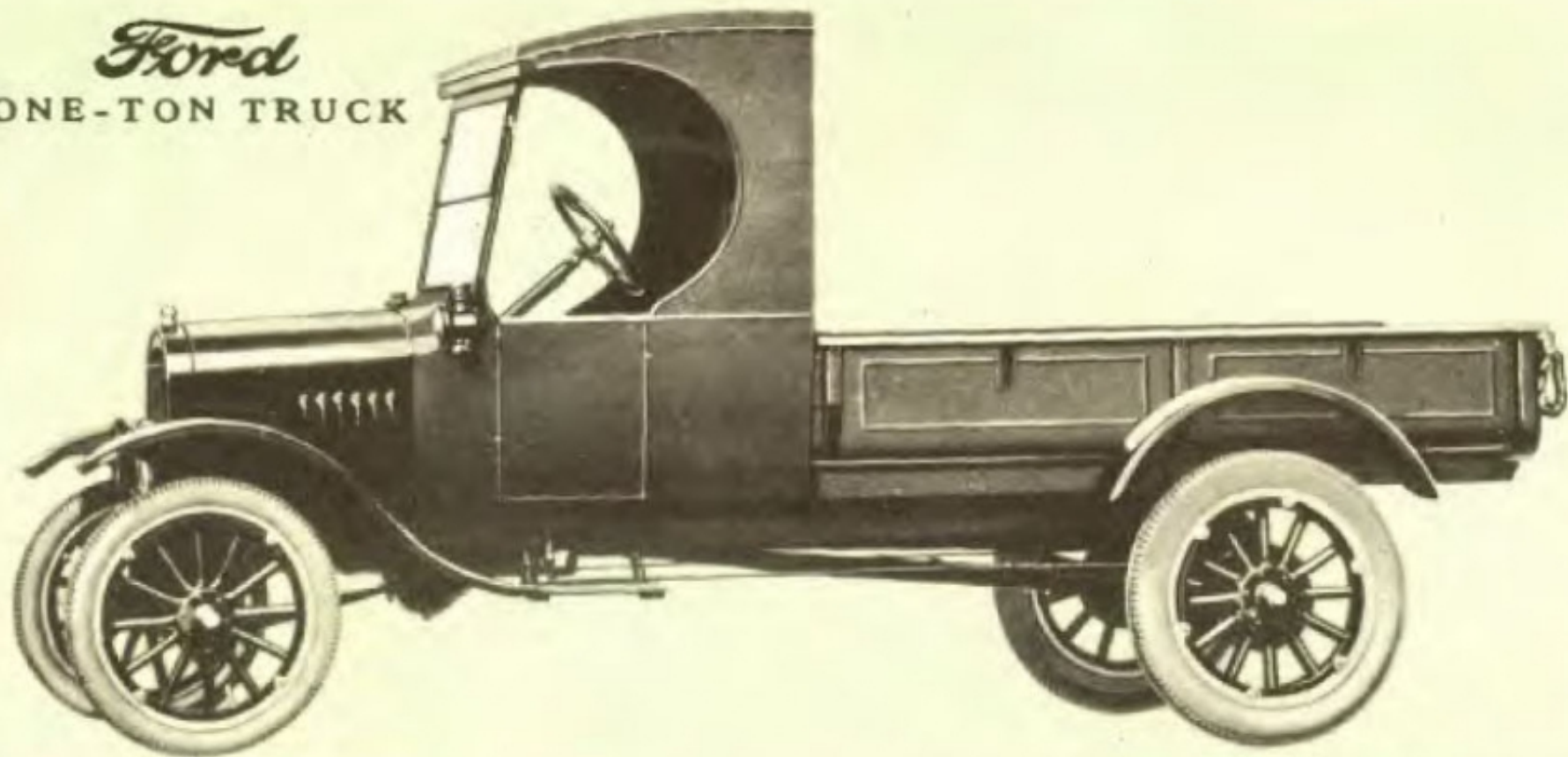
*Ford*  
FORDOR SEDAN  
*Five-Passenger*



The Ford Fordor Sedan is designed and built to meet all normal, enclosed car requirements. It is sturdy in construction and appropriate for any use. The pur-

chase price includes electric starting and lighting equipment, demountable rims, 30 x 3½" non-skid tires, all around, and extra rim and tire carrier.

*Ford*  
ONE-TON TRUCK

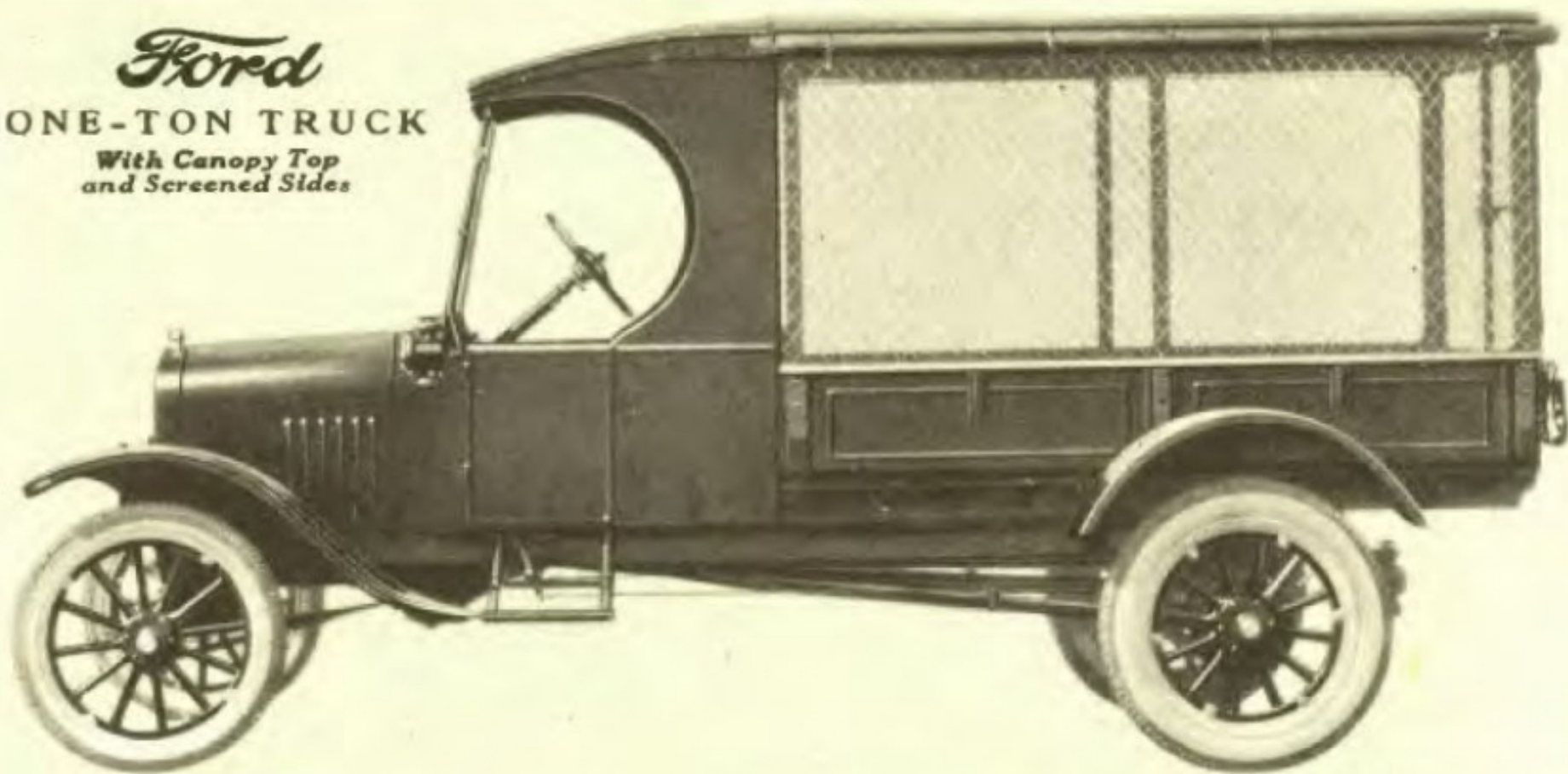


The Ford Truck can now be purchased as a complete haulage unit including the standard Ford One-Ton worm-drive chassis equipped with an all steel body and cab. Stake sockets are provided which permit of its being readily

converted into other types and when desired the body may be secured with canopy top and side curtains, either with or without screen sides and back as shown in the illustration at the right. The steel body is built to withstand



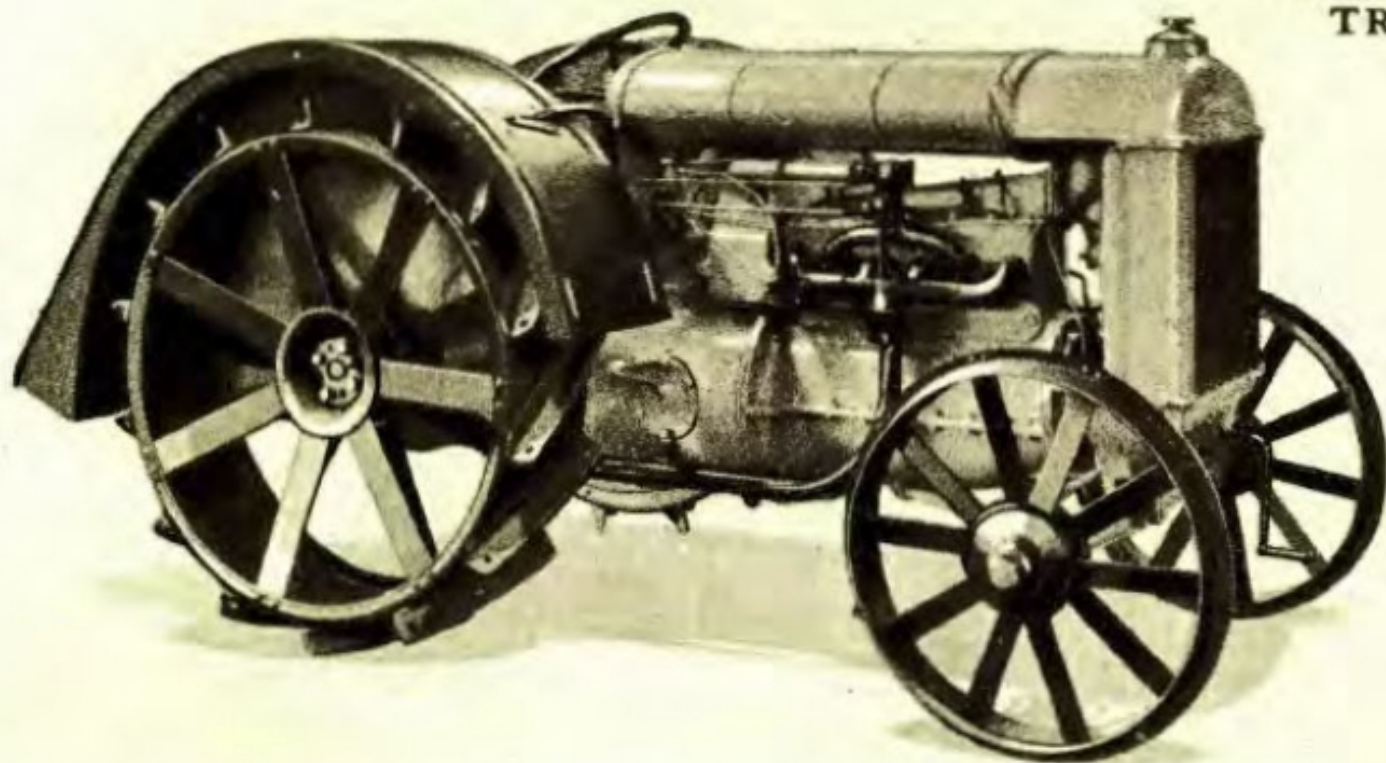
*Ford*  
ONE-TON TRUCK  
*With Canopy Top  
and Screened Sides*



the most severe usage. It has a loading space 7' 2" by 4' which in connection with the various body combinations make it adaptable to the handling of most any kind of a load. With standard gearing the Ford Truck may operate

up to 15 miles an hour, but for quick delivery service a special gear permits a speed of 22 miles. When desired, the chassis, cab or any body combination may be purchased separately. Starting and lighting system is optional.

## Fordson TRACTOR



Simplicity of design, ease of operation and dependable performance under all conditions are outstanding features which have made the Fordson Tractor the most popular of motor power plants. At present, it is filling more than 100 different power requirements throughout

the agricultural and industrial worlds. Because of its low first cost and economy of operation, the Fordson can be made to pay for itself many times over either in farm or industrial work. The Fordson Tractor may be purchased either with or without rear fenders.



## Maintain the High Quality of Your Ford Car by Using Only Genuine Ford Parts

**B**Y using only genuine Ford parts in Ford cars owners can retain indefinitely those qualities of durability and long time performance, which are characteristic of Ford products. The use of genuine Ford material is not only an assurance to owners of receiving maximum service at minimum cost, but is a protection to them against the damaging results that frequently follow the use of counterfeit parts.

In the manufacture of genuine Ford parts only the highest grade materials and workmanship are used. Each part must conform to certain precise specifications and is subjected to the same rigid inspection that is given the Ford car during its process of manufacture.

Some Ford owners fail to realize that certain concerns are engaged in the sale of counterfeit Ford parts. Many of these parts are of exceptionally poor quality and when installed in a car actually con-

stitute a menace to the safety of the occupants. To prevent such material from being installed in your car, and for your own protection, we recommend that when in need of repair parts or service you make it a point to call upon a Ford Dealer or Authorized Ford Service Station. By so doing you not only obtain the services of skilled mechanics using specially designed equipment, but you have the assurance that only genuine Ford parts will be used in your car.

The care exercised in the manufacture of genuine Ford parts is not only reflected in the service they render but is also a guarantee of safety and satisfaction to the purchaser, in the performance of his car. This quality is being zealously maintained by the constant vigilance of a vast force of experienced engineers and the resources of an engineering department second to none.



# SPECIFICATIONS

## FORD MOTOR CARS

**MOTOR**—Four-cylinder. Cylinders cast en bloc. Bore,  $3\frac{3}{4}$ "; stroke, 4"; horse-power, 20.

**TRANSMISSION**—Special Ford planetary type. Multiple steel disc clutch operating in oil.

**LUBRICATION**—Splash system. Oil circulation is maintained by oil thrown off the flywheel by centrifugal action.

**COOLING**—Thermo-syphon.

**IGNITION**—Magneto; special Ford design, built in and made a part of motor.

**STARTER**—Ford Starting and Lighting System, optional on Touring Car, Runabout or Chassis. Included as standard equipment with enclosed body types.

**WHEELBASE**—100 inches.

## ONE-TON TRUCK CHASSIS

**MOTOR**—Four-cylinder. Cylinders cast en bloc. Bore,  $3\frac{3}{4}$ "; stroke, 4"; horse-power, 20.

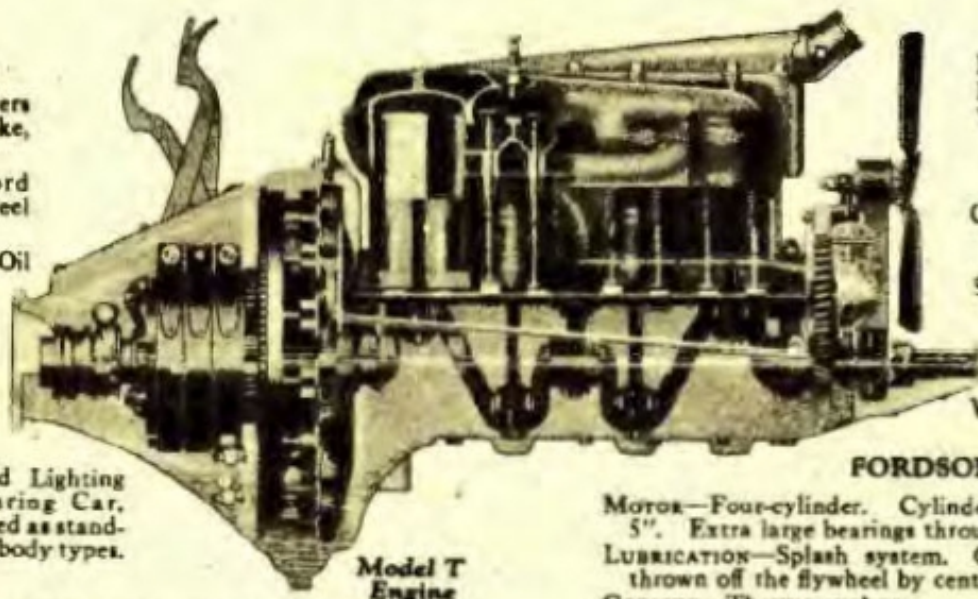
**TRANSMISSION**—Special Ford planetary type. Multiple steel disc clutch operating in oil.

**IGNITION**—Magneto; special Ford design, built in and made a part of motor.

**COOLING**—Thermo-syphon.

**LUBRICATION**—Splash system. Oil circulation is maintained by oil thrown off the flywheel by centrifugal action.

**STARTER**—Ford Starting and Lighting System—optional.



**FRAME**—Heavy pressed steel.

**FINAL DRIVE**—Worm gear type.

**WHEEL EQUIPMENT**—Demountable rims, pneumatic tires, front  $30" \times 3\frac{1}{4}"$ , rear  $32" \times 4\frac{1}{4}"$ . (Solid tires for rear wheels, optional.)

**CAPACITY**—One ton. **GEAR RATIO**—Choice of standard gearing ( $7\frac{1}{4}$  to 1) or special gearing ( $5\frac{1}{4}$  to 1).

**SPEED**—With standard gearing, a speed of not more than 15 m. p. h. is recommended, and with the special gearing, a speed of not more than 22 m. p. h. is recommended.

**WHEELBASE**—124 inches.

## FORDSON TRACTOR

**MOTOR**—Four-cylinder. Cylinders cast en bloc. Bore, 4"; stroke, 5". Extra large bearings throughout.

**LUBRICATION**—Splash system. Oil circulation is maintained by oil thrown off the flywheel by centrifugal action.

**COOLING**—Thermo-syphon.

**FUEL**—Motor started with gasoline from two-quart gasoline tank; once started, the motor is operated by kerosene from 21-gallon kerosene tank. Fuel supplied by gravity feed.

**AIR WASHER**—The air supply is drawn through water, which removes all dust, thus reducing wear on cylinder walls.

**TRANSMISSION**—Constant mesh selective type, three speeds forward and one reverse. All shafts run on ball bearings.

**BELT PULLEY**—Special fibre paper construction, does not require refacing and prevents slipping of drive belt. (Optional.)

**DIMENSIONS**—Wheelbase, 63"; width across rear wheels,  $61\frac{1}{4}"$ .

**WEIGHT**—2425 pounds.

Keep Your Ford a Ford—Insist on Genuine Ford Parts



## FORD MOTOR COMPANY

HIGHLAND PARK, MICH.  
PARENT PLANT

FORD MOTOR COMPANY OF CANADA, Limited  
FORD, ONTARIO

RIVER ROUGE, MICH.  
BLAST FURNACES, COKE OVENS, GLASS FACTORY,  
TRACTOR PLANT, BODY SHOP

FORD MOTOR COMPANY (ENGLAND) Limited  
MANCHESTER, ENGLAND

### American Factory Branches

Over 35,000 Ford sales and service dealers operate under the supervision of these branches

ATLANTA, GA.—465 Ponce de Leon Avenue  
BUFFALO, N. Y.—2495 Main Street  
CAMBRIDGE, MASS.—Corner Brookline and  
Charles River Parkway  
CHARLOTTE, N. C.—420-430 Statesville Avenue  
CHICAGO, ILL.—12600 Torrence Avenue  
CINCINNATI, OHIO—660 Lincoln Avenue  
CLEVELAND, OHIO—11610 Euclid Avenue  
COLUMBUS, OHIO—427 Cleveland Avenue  
DALLAS, TEX.—2700 Williams Street  
DENVER, COLO.—900 S. Broadway Avenue  
DES MOINES, IA.—1900 Grand Avenue  
DETROIT, MICH.—14534 Woodward Avenue

FARGO, N. D.—509 Broadway  
HOUSTON, TEX.—4006 Harrisburg Road  
INDIANAPOLIS, IND.—1315 E. Wash. Street  
JACKSONVILLE, FLA.—Wamboldt Street at River  
KANSAS CITY, MO.—1025 Winchester Avenue  
KEARNEY, N. J.—P. O. Box 616—Lincoln  
Highway  
LOS ANGELES, CALIF.—2060 E. Seventh Street  
LOUISVILLE, KY.—1400-1420 Western Parkway  
MEMPHIS, TENN.—1429 Riverside Drive  
MILWAUKEE, WIS.—397-413 Prospect Avenue  
MINNEAPOLIS, MINN.—420-428 N. 5th Street  
NEW ORLEANS, LA.—Arabii Station

NEW YORK CITY—1710 Broadway  
OKLAHOMA CITY, OKLA.—900 W. Main Street  
OMAHA, NEBR.—1502-1524 Cuming Street  
PHILADELPHIA, PA.—2700-28 N. Broad Street  
PITTSBURGH, PA.—5000 Baum Blvd.  
PORTLAND, ORE.—481 East 11th Street  
ST. LOUIS, MO.—4100 Forest Park Blvd.  
SALT LAKE CITY, UTAH—414 West Broadway  
SAN FRANCISCO, CALIF.—2905-21st Street  
SEATTLE, WASH.—724 Fairview Avenue  
WASHINGTON, D. C.—Pennsylvania Avenue  
and John Marshall Place

### FORD MOTOR COMPANY OF CANADA, Limited FORD, ONTARIO

Most Ford trade in the British Empire (except in the British Isles) is handled by this company

CALGARY, ALTA.—902-910 11th Avenue W.  
MONTREAL, QUE.—119-139 Laurier Avenue E.  
REGINA, SASK.—Cor. 6th Ave. & Rose Street

ST. JOHN'S, N. B.—60 Clarence Street  
TORONTO, ONT.—2951-91 Danforth Avenue E.

VANCOUVER, B. C.—1160 Hamilton Street  
WINNIPEG, MAN.—Portage Ave. & Wall Street

FORD MOTOR COMPANY SOUTH AFRICA, LIMITED, Port Elizabeth, Cape Province

### ASSOCIATED FOREIGN COMPANIES

These branches supervise the activities of over 13,000 dealer organizations which handle  
Ford Sales and Service in every civilized country on earth

ANTWERP, BELGIUM—Magasins Europe, Rue de Naples  
BORDEAUX, FRANCE—33-37 Boulevard Albert 1er  
BUENOS AIRES, ARGENTINA—Calle Wenceslao  
Villafranca 40  
BARCELONA, SPAIN—Avenida de Icaria 149  
HAVANA, CUBA—Calle 23 y P

COPENHAGEN, DENMARK—Sydhavnen  
CORK, IRELAND  
STOCKHOLM, SWEDEN—Stadsgården  
MANCHESTER, ENGLAND—Trafford Park  
MONTEVIDEO, URUGUAY—Calle Yaguaron 1256

ROTTERDAM, HOLLAND—13 Van Helmont St.  
SANTIAGO, CHILE—Calle Exposicion 1240  
SÃO PAULO, BRAZIL, S. A.—Rua Solon 2  
TRIESTE, ITALY—Porto Franco Vittorio  
Emanuele III

# *Ford* PRODUCTS



*Ford Motor Company*

DETROIT, MICHIGAN