

Ford's Model C

1600



Cortina—another better idea from FORD



Ford's Model C; a unique advance
—from the people who invented it!

It's Ford's Model C—the lively Cortina. All Ford and all new all over. The winningest racing heritage in the world (proved in over 300 races and rallies). The roomiest family sedan in its class (space for five tall ones and their 21 cubic feet of luggage). New ease of parking and handling that will especially please her. New room for legs and shoulders to please him. To please the whole family (good-sized or growing), new interior comfort, a new softer ride, new freedom from noise and vibration. New luggage space. Self-adjusting brakes all around: disc front, drum rear. New, wider track and surer sports car cornering. New Ford Motor Company Lifeguard Design Cortina safety features. About the only things not new: . . . famous Cortina economy and low price. We're sure you wouldn't want those changed!



e in basic transportation

Lively Cortina GT... most enjoyable



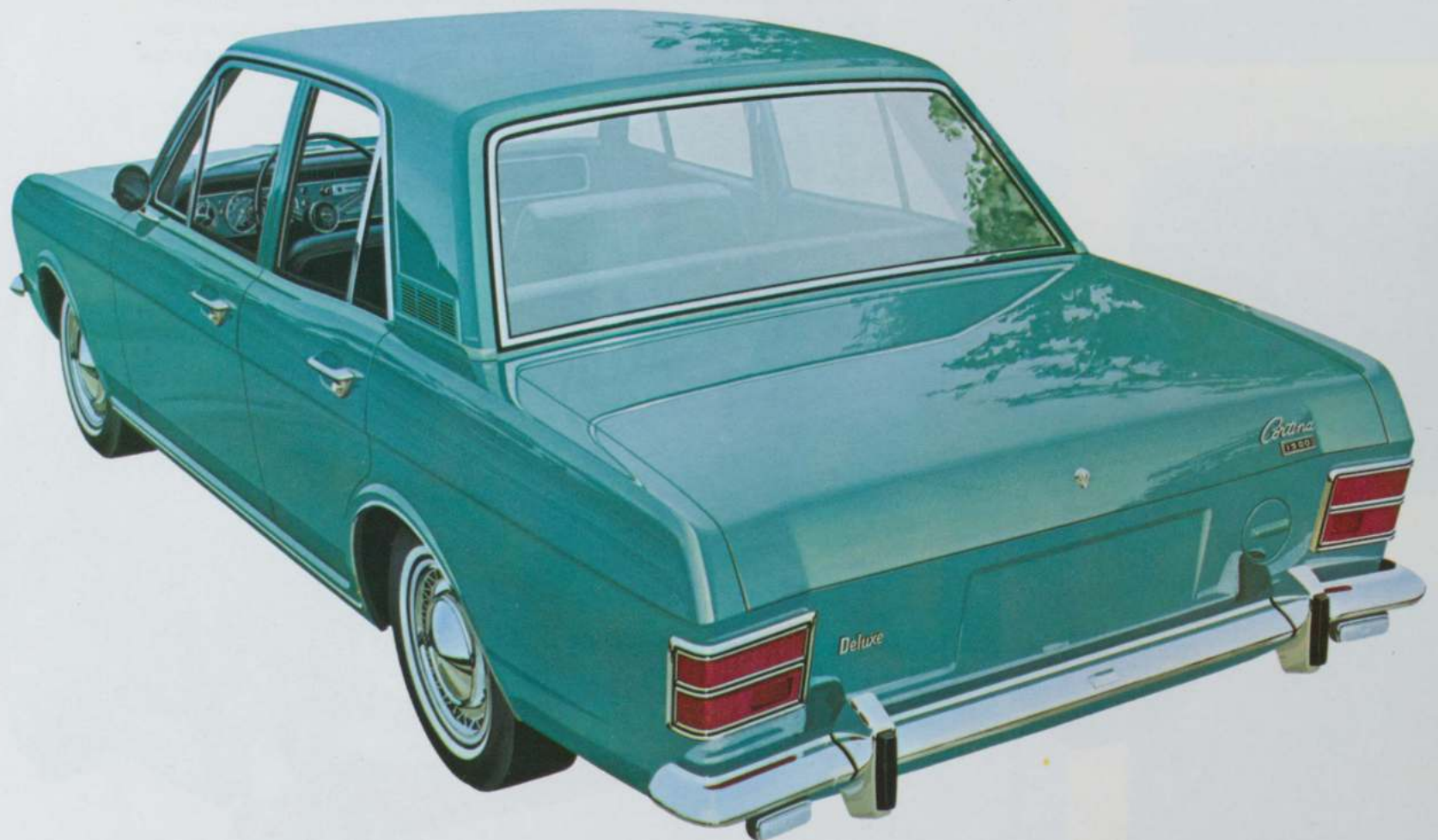
thing between you and the road!

For brisk looks with action to match, the GT comes on the strongest. The new 1600 cc, five-bearing-crankshaft GT engine, with cross-flow cylinder head and bowl-in-piston combustion chamber, is specially tuned for all-out performance (the kind that has already earned Cortina over 300 wins in international road-racing and rallying!). A new, wider track, front and rear, combines with rear suspension radius arms for surer handling and grooved cornering. Front disc brakes. Four-speed gearbox with console-mounted stick shift, fully synchronized for trigger-quick gear changes. Fully instrumented facia, including tachometer, ammeter, oil pressure gauge and fuel gauge. Luxurious bucket seats and console. All topped off by distinguishing GT stripes and altogether a car designed to lead a checkered-flag career.



Cortina GT Two-Door (also available as Four-Door)

Roomy and zoomy...the
fun-minded family car!



Cortina Deluxe Four-Door

More stylish, more comfortable than ever. Power to spare in its rally-bred 1600 cc ohv engine. Cross-flow cylinder head and bowl-in-piston combustion chamber for greater thermal efficiency. Fully synchronized 4-speed shift (automatic optional). More room to stretch—in every direction. The new, stronger body, with gently curved doors and side windows, gives over two inches more shoulder room front and rear. Extra room, too, for parcels and luggage—21 cubic feet in the luggage deck. New, wider-opening doors to ease your ins-and-outs. And the rear doors have child-proof locks. Deep, soft bucket seats in front; more room in the wide rear seat than you'd imagine in a car so taut and trim on the outside. All in all, fine Ford quality at its lowest price.





Designed to keep your budget
a beautiful secret!



Saving money is enjoyable enough in itself (economy is just one of Cortina's many virtues!). When you look this good doing it, it's something else. Cortina's crisp way of going will keep every member of your family feeling young. And to keep them feeling refreshed, there's all-season Aeroflow Ventilation System. If you should choose Cortina as a second car (an inspired thought!), don't be surprised if it is more often first choice. A smart way to send a young heir off to college—or a busy mother to the shopping center. A thrifty car to commute in (you get extra miles to the gallon), with Ford's lubed-for-life fittings, self-adjusting diaphragm clutch and brake system, special heavy-gauge rustproofed steel.



Cortina Deluxe Two-Door



Cortina interiors... head and shoulders above anything in Cortina's class

We're serious. No other family car in its class can match the new Cortina for roominess. In shoulder room, for instance (a vital dimension!), you'll find over two extra inches of width, thanks to new curved side glass. New contour-formed, deep bucket seats (you sit in them, not on them) and deep-loop pile carpeting (door to door) offer a sense of luxury out of the ordinary for a car priced so economically. Other touches you'll like: cigarette lighter, coat hooks, armrests, courtesy light. In the GT: an extra glove box and extra rear ashtray.

The Cortina GT instrument panel (padded, of course) is a clever blend of functional design and swinging good looks (shown far right). The instrument layout stresses clarity and completeness. Controls are conveniently placed (they'll make a defter driver even of the beginner in your family). Aero-flow and heater controls are centered, accessible both to driver and passenger.







Cortina Four-Door Station Wagon

Good looks carry a lot of weight
in this sporty, versatile wagon!

When this versatile wagon joins your family circle, you'll have as much fun running errands (it has 70.5 cubic feet of load space) as just running around. The body style is all new—inside and out. There's more room for legs and shoulders and ladders and groceries (and you-name-it!). Tougher. More reliable. The integral body is all steel. Has the powerful 1600 cc engine to help it live up to Cortina's racy reputation. Has improved Aeroflow Ventilation (refreshing even with windows closed). Has a special door-lock feature that makes the rear doors "child-proof". (Disengages rear handles so kids can't pull them open.) Has a fully synchronized four-speed shift (automatic is optional), front disc brakes, foam-padded bucket seats, an all-vinyl interior (it's washable!) and a full list of Ford Motor Company Lifeguard Design Cortina safety features. Everything a wagon should be—Cortina!



Ford gives you better ideas...inside

In every Ford Cortina you get: foam-padded bucket seats, heater/defroster, Aeroflow Ventilation System, 2-speed electric windshield wipers, turn signals, chromed front and rear bumpers, bumper guards, twin padded sun visors, interior light with courtesy switches, washable vinyl headlining, all-vinyl upholstery, glove compartments, full-width package tray, padded door armrests, front and rear ashtrays, windshield washer, padded instrument panel, child-proof rear door locks, outside rear view mirror, back-up lights, emergency flashing system, deep-dish steering wheel, front (lap-and-shoulder) and rear seat belts, body undercoating, self-adjusting dual brake system with front disc and rear drum, self-adjusting diaphragm clutch, heavy-duty battery, American-size nuts and bolts, throughout.

In addition, the Cortina GT features: center console, deluxe wheel covers, oil and temperature gauges, ammeter, tachometer, short-throw, fully synchronized 4-speed shift.

1. Aeroflow heating and ventilating system is an award-winning design to keep you cooler, fresher and more comfortable in any kind of driving weather. It changes the interior air completely every 34 seconds, introducing warm or cool fresh air through the adjustable instrument panel vents and removing stale air through rear louvers. A simple set of controls operates the extremely efficient heater/defroster.

2. Although 14 feet long from new full-width front grille to more spacious luggage deck (21 cubic feet and biggest in Cortina's class!), the new Ford Cortina turns in a radius of just 30 feet, 6 feet less than VW's. Parking and maneuvering are delights, even in the skimpiest of spaces.

3. While the Standard Cortina transmission is smooth-shifting through all the gears (it's fully synchronized), and the new diaphragm spring clutch features reduced pedal effort, you might prefer the ultimate in driving ease offered by optional automatic drive, available in all Cortina models, except GT.



Aeroflow heating and ventilating system louvers.

and out

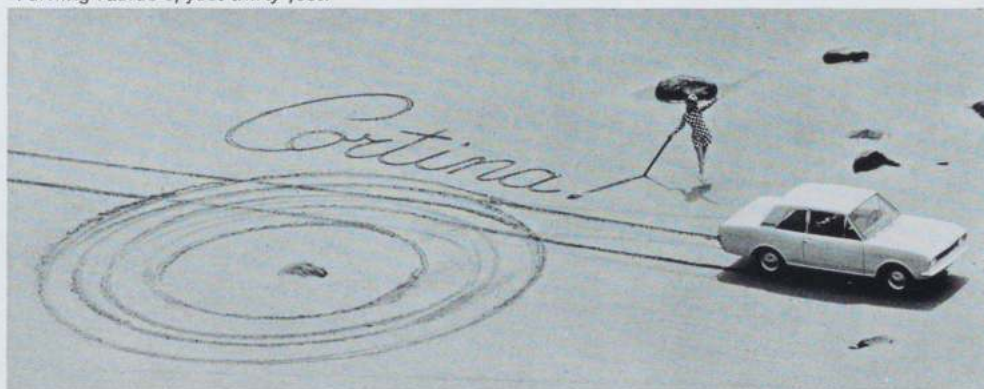
Adjustable air nozzles at either end of instrument panel direct air for maximum air flow.



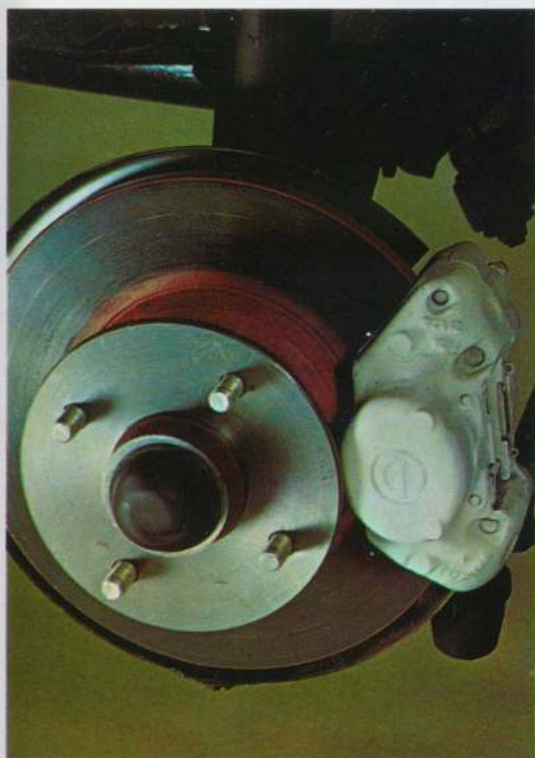
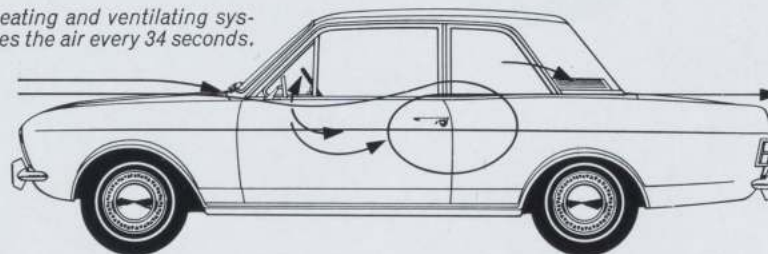
21 cubic feet of trunk space.



Turning radius of just thirty feet.



Aeroflow heating and ventilating system changes the air every 34 seconds.

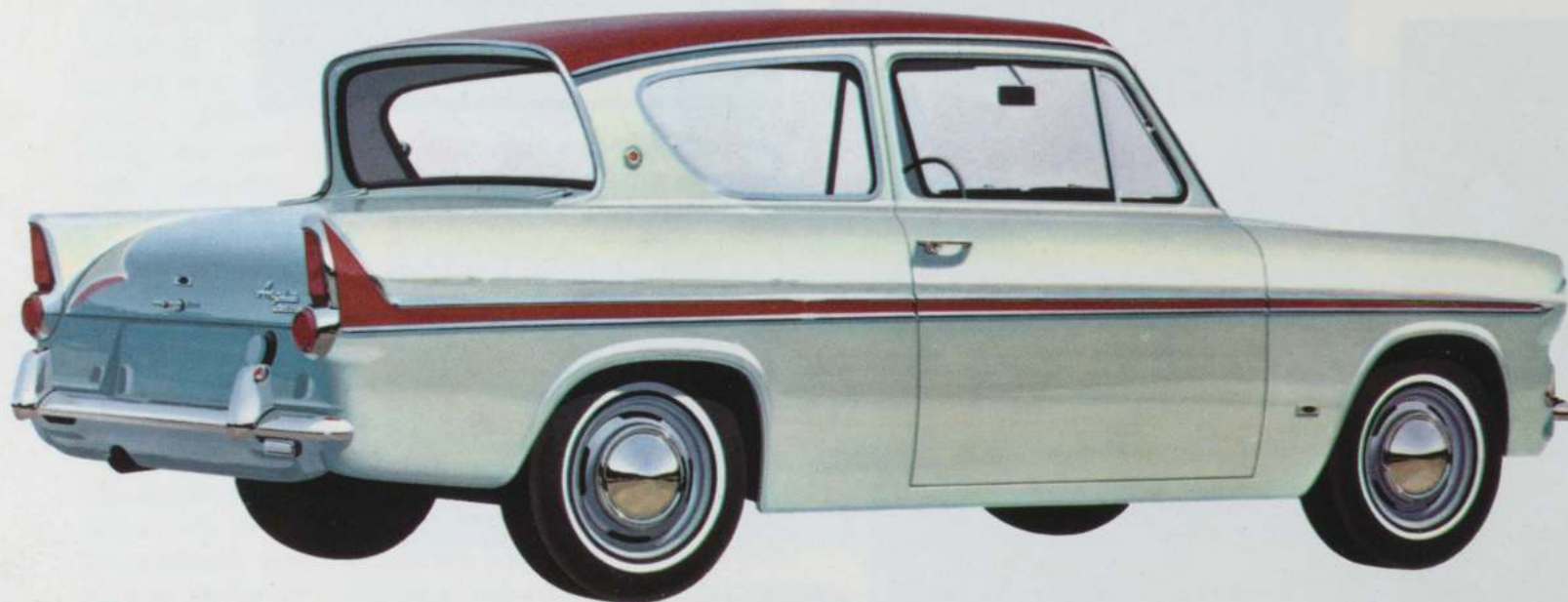


Front disc brakes for more fade-free stopping power.



Anglia's winningest features are its low first cost and mile-after-mile driving economy. But the price is the only thing skimpy about it. Inside, there's all-vinyl trim, carpeting, leg, hip and shoulder comfort for four. Under the hood a zesty 1200 cc engine that loves to tackle a turnpike (or a trip downtown). Among other Anglia goodies: foam-padded bucket seats, locking glove box, courtesy light, padded armrests and instrument panel, padded visors, front and rear ashtrays and rear windows that open (some cars' don't, you know).

And the Anglia Van is great for the small businessman (or a large businessman, for that matter)! Outstanding gas economy. Up to 73 cubic feet of cargo space. A cinch to handle and park (turns in a circle of just 32 feet!). The doors are curved to clear curbs. And if you have a business partner (or a favorite passenger) there's an optional bucket seat (vinyl-covered just like the driver's).



Anglia Deluxe Two-Door



Anglia...frisky cousin of the Model C!



Anglia Van



The nuts and bolts of it.

	2-dr. Cortina GT	4-dr. Cortina GT	2-dr. Cortina Deluxe	4-dr. Cortina Deluxe	4-dr. Cortina Station Wagon	2-dr. Anglia Deluxe	Anglia Van
Front seat type	Bucket						Bucket (b)
No. Passengers	5					4	1 or 2 (b)
Body construction	All-steel integral						
Wheelbase	98"					90.5"	
Overall length	168"				169.5"	153.5"	151.86"
Overall width	64.9"					57.34"	59.2"
Overall height (unladen)	54.7"					56.62"	63.95"
Wheel tread—front/rear	52.5"/51.0"					46.0"/45.8"	
Curb weight	2028 lbs.	2066 lbs.	1974 lbs.	2013 lbs.	2154 lbs.	1711 lbs.	1636 lbs.
Trunk capacity (with spare)	21 cu. ft.				70.5 cu. ft. (a)	10 cu. ft.	73 cu. ft. (c)
Tires	165 x 13 radial ply		5.60 x 13		6.00 x 13	5.20 x 13	
Ground clearance (min.)	5.15"						
Engine type	4-cyl. OHV, cross-flow cylinder head. Bowl-in-piston combustion chambers.						
Engine displacement	97.6 cu. in.					73.1 cu. in.	
Compression ratio	9.6:1		9.0:1			9.1:1	
Brake horsepower @ rpm	92 @ 5500		75 @ 5000			54 @ 5000	
Cooling system (with heater)	13.2 pints					12.6 pints	
Fuel tank capacity	12.0 U. S. gallons				9.6 U. S. gallons	8.4 U.S. gallons	
Carburetor	Two-barrel Weber		Single barrel with accelerator pump				
Choke control	Manual		Manual with 4-speed. Automatic with auto. trans.			Manual	
Electrical system	12-volt system with heavy-duty 57-ampere-hr. battery					12-volt, 51-amp. hr. battery	
Distributor	Mechanical and vacuum advance						
Transmission	4-speed, all-synchronized floor shift (heavy-duty drive shaft for GT).						
Transmission—Optional	Not offered		3-Speed Automatic (Borg Warner)			Not offered	
Front suspension	Independent coil spring with double-acting hydraulic shock absorbers. Front stabilizer bar. (Stiffened for GT.)						
Rear suspension	Leaf-type rear springs and double-acting hydraulic shock absorbers. (Traction arms added for GT.)						
Brakes	Self-adjusting, hydraulic, disc-type front and drum-type internal expanding rear.					Hydraulic. Two leading shoes, front	
Brake drum diameter	Front—9½" disc Rear—9" drum		Front—9½" disc Rear—8" drum			8.0" drums Front and rear	
Brake lining swept area	285.6 sq. in.		247.4 sq. in.			125.7 sq. in.	
Rear axle ratio	3.9:1					4.125:1	4.44:1
Rear axle type	Semi-floating hypoid						
Turning radius	30.0 feet					32 feet	
Steering gear ratio	16.4:1					14:1	
Instruments	Speedometer, odometer, temperature gauge, fuel gauge, generator light, main beam light, turn indicator lights, oil pressure light. GTs have a 7000 rpm tachometer and have oil pressure gauge and ammeter in place of lights. Brake testing light.					Speedometer, odometer, temperature gauge and fuel gauge. Lights for generator, main beam, turn indicator and oil pressure.	

(a) Station wagon cargo space behind front seat. (b) Bucket-type passenger seat available as optional equipment. (c) Anglia Van cargo capacity.



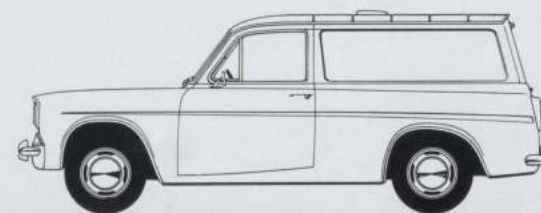
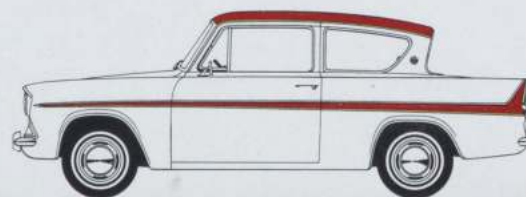
Model	Standard equipment	Optional equipment*
2-dr. Cortina GT	GT has all Cortina Deluxe equipment plus: wide rim wheels with radial-ply tires, center console, deluxe wheel covers, GT emblem and instrumentation shown in chart on facing page.	Radio and GT stripes (dealer fitted). Interior and exterior decor groups.
4-dr. Cortina GT		
2-dr. Cortina Deluxe	Foam-padded bucket seats, heater-defroster and full face-level Aeroflow Ventilation System, two-speed electric windshield wipers, turn signals, chromed front and rear bumpers, bumper guards, twin padded sun visors, interior light with courtesy switches, washable vinyl headlining, all-vinyl upholstery, glove compartment, package tray, padded door armrests, front and rear ashtrays, windshield washer, safety-padded instrument panel, single-tone horn, tectyl underbody sealing. Curved side glass, emergency flashers, side view mirror, dual braking system, backup lights, coat hooks, front and rear seat belts (shoulder strap with front seat belts), and child-proof locks on rear doors of 4-door models. Also: drip-rail molding for station wagon, roll-down rear side windows for station wagon and 4-door Cortina Deluxe.	3-speed automatic transmission, white sidewall tires, interior and exterior decor groups, radio, deluxe wheel covers (dealer fitted).
4-dr. Cortina Deluxe		
4-dr. Cortina Station Wgn.		
2-dr. Anglia Deluxe	Both Models: Electric windshield wipers, windshield washer, turn signals and padded instrument panel. 2-dr. Anglia Deluxe: Foam-padded bucket seats, heater-defroster and fresh-air vent system, chromed front and rear bumpers, bumper guards, twin padded sun visors, interior light with courtesy light switches, vinyl headlining, all-vinyl upholstery, lockable glove box, full-width package tray, padded door armrests, front and rear ashtrays, opening rear side windows, tectyl underbody sealing. Tutone finish. Anglia Van: Vinyl-covered driver's seat, aluminized bumpers, open glove compartment, sun visor, heater-defroster.	Both Models: Side view mirror, emergency flashers, seat belts, back-up lights, deluxe wheel covers, radio. 2-dr. Anglia Deluxe: White sidewall tires, cigar lighter, carpeting. Anglia Van: Passenger seat, right sun visor, chromed bumpers and front bumper guards.
4-dr. Anglia		
Anglia Van		



And, of course, Ford Motor Company Lifeguard Design Cortina Safety Features are standard equipment.

Padded instrument panel
Padded sun visors
Brakes self-adjusting, front and rear
Deep padded steering wheel hub
Two-speed electric windshield wipers
Four-way emergency flasher
Dual hydraulic brake system
Windshield washers
Back-up lights
Turn indicators
Outside rear view mirror
Front and rear seat belts
Thick laminate safety plate glass windshield
Special device which, when activated, prevents the rear doors from being opened from inside

The illustrations and product information contained herein were current at the time this publication was approved for printing. However, in order to continue to offer the finest automotive products available, Ford Motor Company reserves the right to change specifications, designs, models or prices without notice and without liability for such changes.



Introducing
another better
idea from Ford...
Ford's Model C.

