



1966 Fairlane



Symbol of
Fairlane's newness...
the unique
reversible key!

New dazzle! New go! New Fairlane for '66!

How much can a car change in just one year? You'll never know till you try a new Fairlane. Try out the interior for its new luxury, comfort and family-size room. Try it out on the road and experience a new smooth, quiet ride and a new kind of nimble handling that will *really* surprise you. And try the response of a full range of engines from a quick, thrifty 200-cu. in. Six to a 4-barrel Thunderbird Special 390-cu. in. V-8!

New Fairlanes come in a complete line of 13 models to suit the taste of every driver, every family. Smart, new bucket-seat hardtops and convertibles! Luxurious, roomy sedans! Brand-new GT and XL series! And three of the slickest wagons in their class! Standard features include many items not available on other cars at *any* price.

See how Fairlane measures up to everything you want in a car. Styling, ride, comfort, performance... *and price!* Try the Fairlane formula at your Ford Dealer's today!

5 SERIES, 13 MODELS

FAIRLANE GT & GTA: 2-Door Hardtops, Convertibles

FAIRLANE 500/XL: 2-Door Hardtop, Convertible

FAIRLANE 500: 2-Door Hardtop, Convertible,
Club Coupe, 4-Door Sedan

FAIRLANE: Club Coupe, 4-Door Sedan

WAGON: Fairlane Squire, Fairlane 500, Fairlane



Fairlane 500/XL Hardtop



Fairlane 500 4-Door Sedan



Fairlane Squire Wagon

Fairlane GT and GTA

Bold GT stripes, "black-out" grilles and gleaming hood louvers are clues—these cars *go*! And no wonder! Standard engine on the new Fairlane GT and GTA is an exciting new 390-cu. in. 4-barrel V-8, the Thunderbird Special. This 335-hp mill will twist the tail of *any* tiger! High-lift cam, low-restriction air cleaner and bigger carburetor deliver "right now" performance. And it's only fitting that the 390 be decked out with chrome-plated rocker covers, oil filler cap, oil dip stick, radiator cap and air cleaner cover.

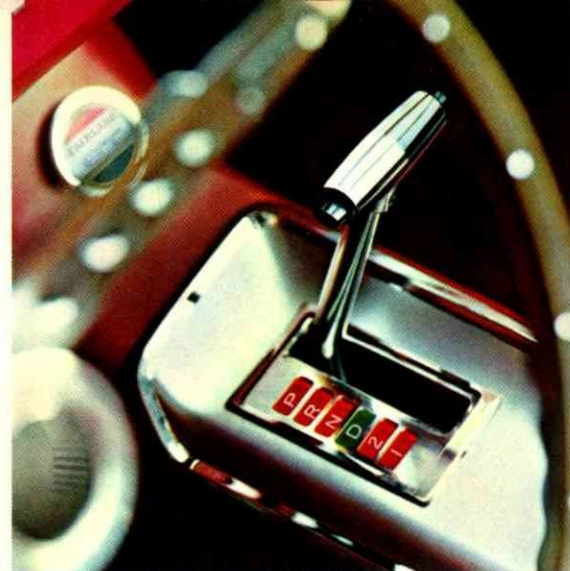
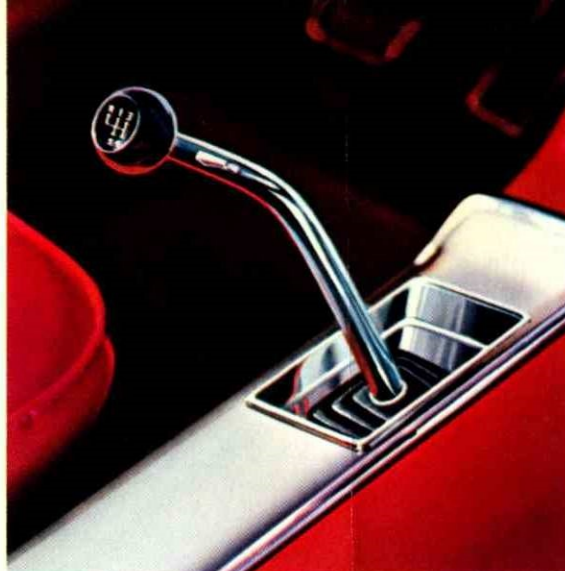
Standard gear box with the Fairlane GT is the console-shift Synchro-Smooth Drive 3-speed manual, *fully* synchronized in all forward gears. Optional is the 4-speed console-shift box.

A great new performance option makes the GT a GTA. It's Fairlane's Sport Shift Cruise-O-Matic Drive. This remarkable automatic lets you shift *manually or automatically*, as you prefer. It's actually two transmissions in one . . . a manual for "him" and an automatic for "her" as explained at the right. The Sport Shift not only makes driving more fun, but it's a practical assist in hill climbing, braking and trailering.

For competition-type handling the GT and GTA feature stiffer springs and shocks, heavy-duty stabilizer bar, 7.75 nylon whitewall tires.

These new cars sport special GT and GTA identification and share luxurious interior appointments with the XL series described on pages 6 and 7. Get hold of an exciting new Fairlane GT or GTA at your Ford Dealer's now.

STANDARD EQUIPMENT HIGHLIGHTS ■ 335-hp Thunderbird Special V-8 ■ Transmission: GTA, Sport Shift Cruise-O-Matic; GT, Synchro-Smooth Drive 3-Speed Manual Transmission ■ Bucket Seats and Console ■ Full Carpeting ■ Glass rear window in Convertibles ■ Padded Instrument Panel and Sun Visors ■ Front and Rear Seat Belts ■ Colour and Upholstery Choices: 15 Colours of Super Diamond Lustre Enamel; 7 All-Vinyl Interior Trims ■ Wheel Covers ■ Suspended Accelerator Pedal ■ Backup Lights ■ Outside Rearview Mirror. **POPULAR OPTIONS** (see also page 15) ■ 4-Speed Manual Transmission ■ Push-Button Radio ■ Styled Steel Wheels ■ White Sidewall Tires ■ Power Convertible Top ■ Sports Steering Wheel ■ Limited-Slip Differential. **BASIC SPECIFICATIONS** ■ Length 197.0" ■ Width 74.7" ■ Wheelbase 116.0" ■ Weight (approx.) 3486 lb. (Hardtop), 3650 lb. (Convertible) ■ Trunk Volume 15.2 cu. ft.



If you want to do *all* your own shifting, the 4-speed is for you. Fairlane's optional 4-speed manual transmission (available with V-8's) is fully synchronized with higher numerical ratio in first gear. Gives fast takeoff from standing start. Floor-mounted shift lever has positive reverse-gear lockout.

Special with the Fairlane GTA is new Sport Shift Cruise-O-Matic Drive, which permits both manual *and* automatic shifting. For manual gear changing, move shift lever back to Low (1) and upshift through 2nd (2) and into High or Drive (D). For fully automatic shifting, simply move lever to Drive and go!

GT and GTA interior with luxurious vinyl bucket seats, console-mounted shift lever, paddle-type door handles integral with arm rests and optional sports steering wheel.



Fairlane GTA Hardtop



Fairlane GT Convertible

Fairlane 500/XL

Sporty looking? Sure! But that's not the half of it. The 500/XL's broad range of power teams lets you satisfy your personal flair for fun. Choose from three engines ranging from the standard 200-cu. in. Six to the big 390-cu. in. Thunderbird V-8. Then pick from the standard 3-speed manual transmission, optional 4-speed manual or 3-speed Cruise-O-Matic.

Fairlane has plenty of sports-car feel, too. New, wider tread (58"), 14-inch low-profile tires and redesigned front and rear suspensions give outstanding stability and control.

Fairlane 500/XL models come in a new Convertible and a 2-Door Hardtop with a sweeping fastback roofline. New, wider bucket seats give greater support and add a look of luxury. Bucket-styled rear seats and sponge texture headlining give a new plush look. Controls for Cruise-O-Matic and 4-speed manual transmissions are console-mounted.

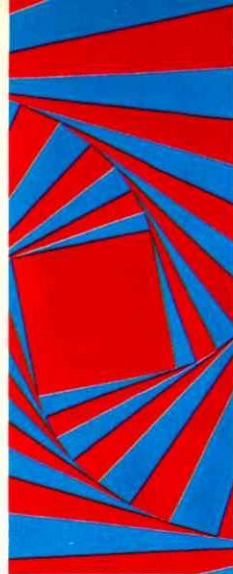
A complete list of options including a tinted windshield and dual headlight-to-taillight accent stripe lets you make the 500/XL as sporty as you want it.

Add to this Fairlane's deep-down quality and Ford's famous Service-Saving Features, and it's easy to see how you get real value in this one!

STANDARD EQUIPMENT HIGHLIGHTS ■ 120-hp Fairlane Six ■ 3-Speed Manual Transmission ■ Bucket Seats and Console ■ Full Carpeting ■ Glass Rear Window in Convertible ■ Colour and Upholstery Choices: 15 Colours of Super Diamond Lustre Enamel; 5 All-Vinyl Interior Trims ■ Wheel Covers ■ Suspended Accelerator Pedal ■ Padded Instrument Panel and Sun Visors ■ Front and Rear Seat Belts ■ Outside Rearview Mirror ■ Backup Lights ■ Windshield Washers and Single-Speed Wipers ■ Ford's Extended Maintenance Features (back cover). **POPULAR OPTIONS** (see also page 15) ■ 200-hp or 265-hp V-8's ■ Cruise-O-Matic Drive ■ 4-Speed Manual Transmission ■ Push-Button Radio ■ Power Steering ■ Power Brakes ■ Power Convertible Top ■ White Sidewall Tires ■ Dual Accent Paint Stripe. **BASIC SPECIFICATIONS** ■ Length 197.0" ■ Width 74.0" ■ Wheelbase 116.0" ■ Weight (approx.) 3025 lb. (Hardtop), 3199 lb. (Convertible) ■ Trunk Luggage Volume 15.2 cu. ft.

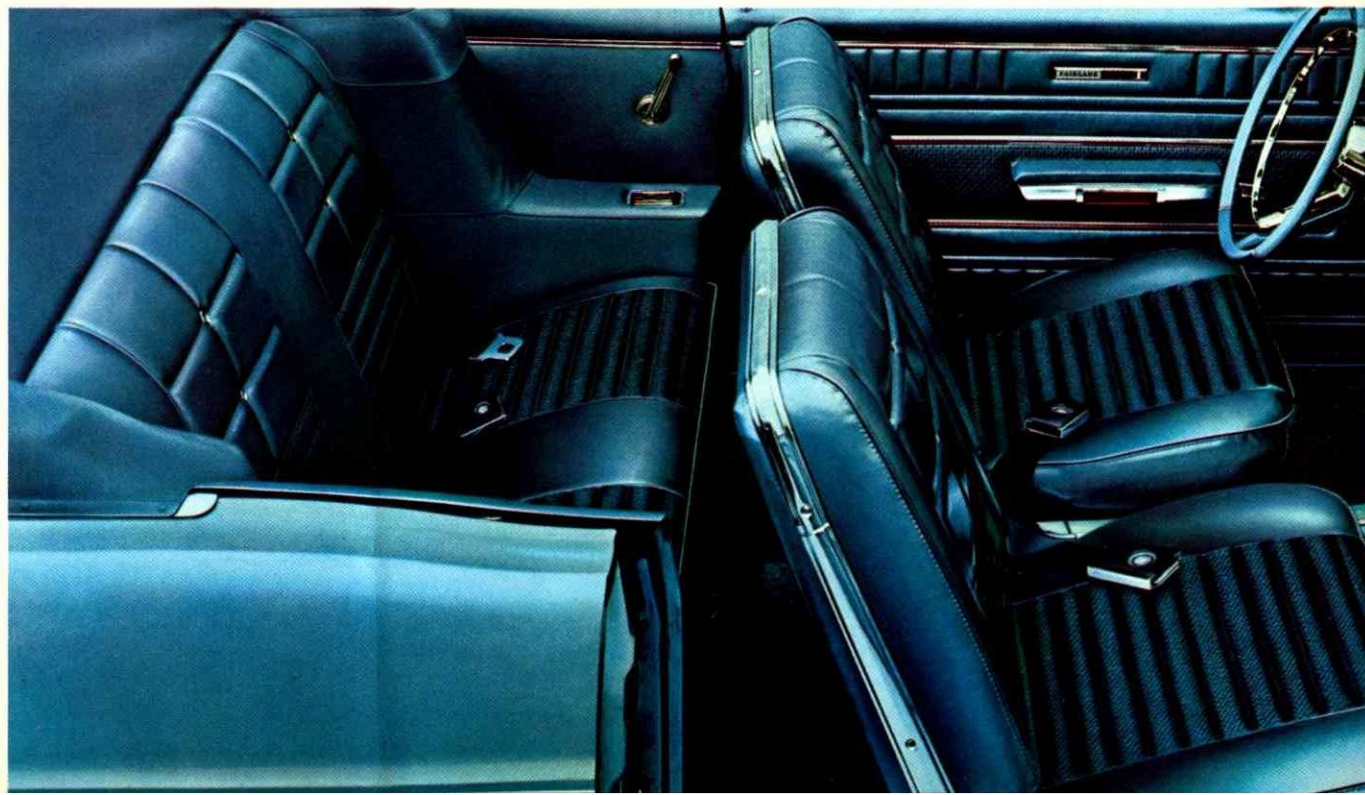


Combination safety (red) and courtesy (white) light mounted in front arm rests are standard on XL and GT models. Door panels are luxurious vinyl with bright trim moldings.



New convertible top is constructed of rugged 5-ply satin finish vinyl for durability. Glass rear window (standard) resists scratching, discolouring and can't wrinkle. Power top (shown above) is optional.

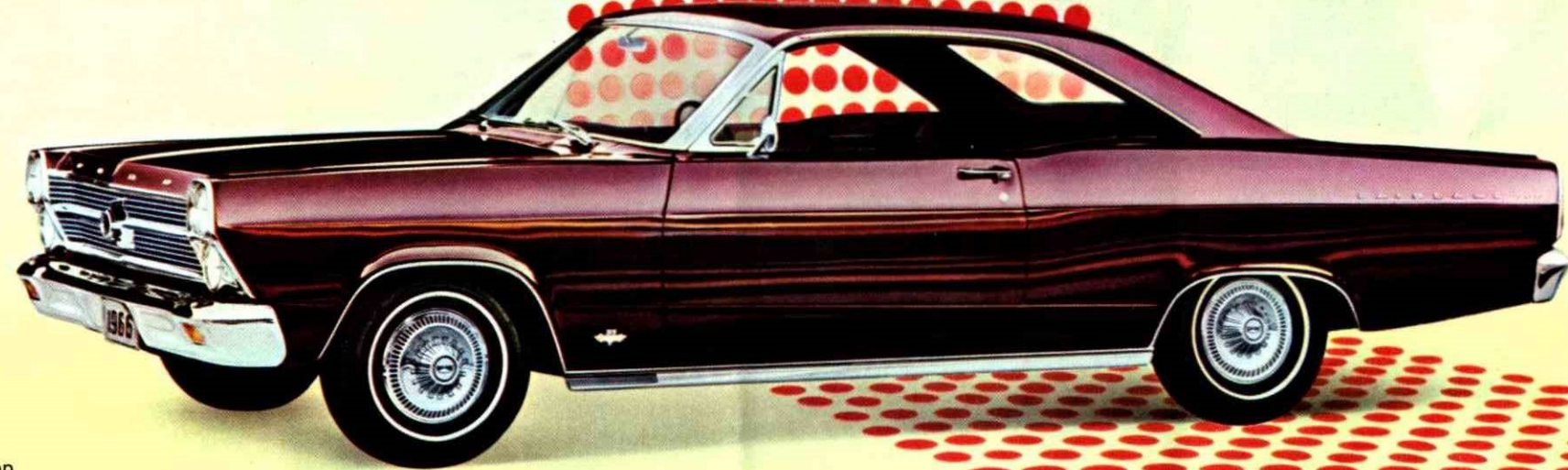
Fairlane 500/XL interior features wider contoured bucket seats, all-vinyl trim, padded dash and sun visors and paddle-type door handles, all standard.



Fairlane 500/XL Convertible



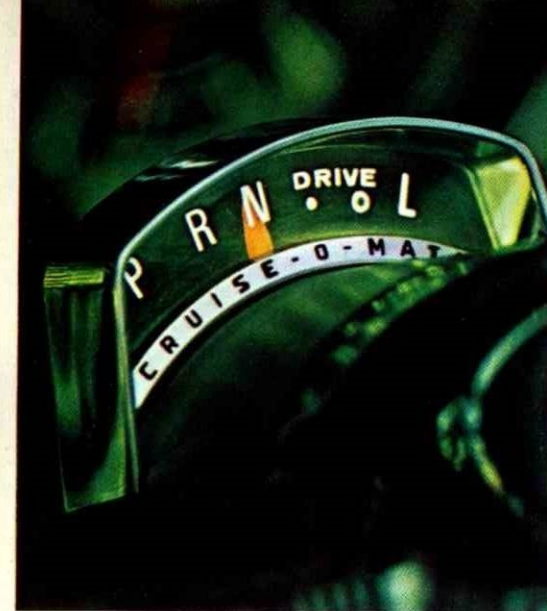
Fairlane 500/XL Hardtop



Fairlane 500 Hardtop



Fairlane 500 Convertible



For greater convenience at night, Fairlane's optional Cruise-O-Matic Drive features a lighted selector quadrant. In fact, all '66 Fairlane controls are lighted.



Vinyl convertible top boot, attractively colour-keyed to the interior trim, snaps easily into place with concealed fasteners.

Fairlane 500 interior features vinyl door panels, pleated nylon and vinyl full-width seats, nylon-rayon loop pile carpeting, plus sponge-texture vinyl headlinings on hardtops, sedans and club coupes.



Fairlane 500

Fairlane for '66 is an appealing blend of youthful styling and meaningful luxury. And nowhere is this more apparent than in these new Fairlane 500's. Check the smooth lines of the smart new Convertible with the new glass rear window. Or the sweeping roofline of the 2-Door Hardtop. And note that all Fairlanes have curved side glass, a feature that provides more room and comfort.

Fairlanes ride better this year than ever before. Improved coil-spring front suspension and longer, wider rear leaf springs provide a smooth, quiet ride with superb road handling characteristics. Manual steering ratio is increased for greater steering ease.

Inside, there's a new instrument panel with full padding as standard equipment. Highlights include front and rear seat belts, hot/cold warning light for engine temperature, reversible key and "keyless" door locking—all standard.

New window and door rubber seals lock out drafts and wind noise for greater passenger comfort. Cowl-top ventilation system has controls at instrument panel sides for greater convenience. New foot-operated parking brake and suspended accelerator pedal are added features.

The standard 200-cu. in. Fairlane Six is as smooth as it is thrifty. For more snap, there is the optional 200-hp V-8 or the 265-hp Thunderbird V-8. Test Fairlane's unique blend of total performance.

STANDARD EQUIPMENT HIGHLIGHTS ■ 120-hp Fairlane Six ■ 3-Speed Manual Transmission ■ Safety-Courtesy Lighting ■ Full Carpeting ■ Convertible Top with Glass Rear Window ■ Full-Width Seats ■ Padded Instrument Panel and Sun Visors ■ Suspended Accelerator Pedal ■ Front and Rear Seat Belts ■ Colour and Upholstery Choices: 15 Colours of Super Diamond Lustre Enamel; 5 Cloth and Vinyl (Hardtop), 5 All-Vinyl (Convertible) Trims ■ Outside Rearview Mirror ■ Backup Lights ■ Windshield Washers and Single-Speed Wipers ■ Ford's Extended Maintenance Features (back cover). **POPULAR OPTIONS** (see also page 15) ■ 200-hp or 265-hp V-8's ■ Cruise-O-Matic Drive ■ Power Steering ■ Power Brakes ■ Power Convertible Top ■ Dual Accent Paint Stripe. **BASIC SPECIFICATIONS** ■ Length 197.0" ■ Width 74.0" ■ Wheelbase 116.0" ■ Weight (approx.) 2939 lb. (Hardtop), 3184 lb. (Convertible) ■ Trunk Luggage Volume 15.2 cu. ft.

Fairlane 500

Family-size comfort and convenience in a fun-size car! That neatly describes the '66 Fairlane 500 Sedans and Club Coupes. You notice the difference when you slip through the big door openings. Inside, there's more hip and shoulder room—plenty of room for six adults. New seat designs provide extra comfort and back support. You'll also see many safety features including: padded instrument panel and sun visors, outside rearview mirror, backup lights, front and rear seat belts, emergency flasher and windshield washers, all standard.

Fairlane's a comfortable road car, too! The integral body-frame utilizes four underbody torque boxes to help isolate noise and vibration from the passenger compartment. Refined front and rear suspension combined with Fairlane's new wider tread provides outstanding stability and a smoother, more comfortable ride. And a more effective use of insulating materials blots out heat and road noise.

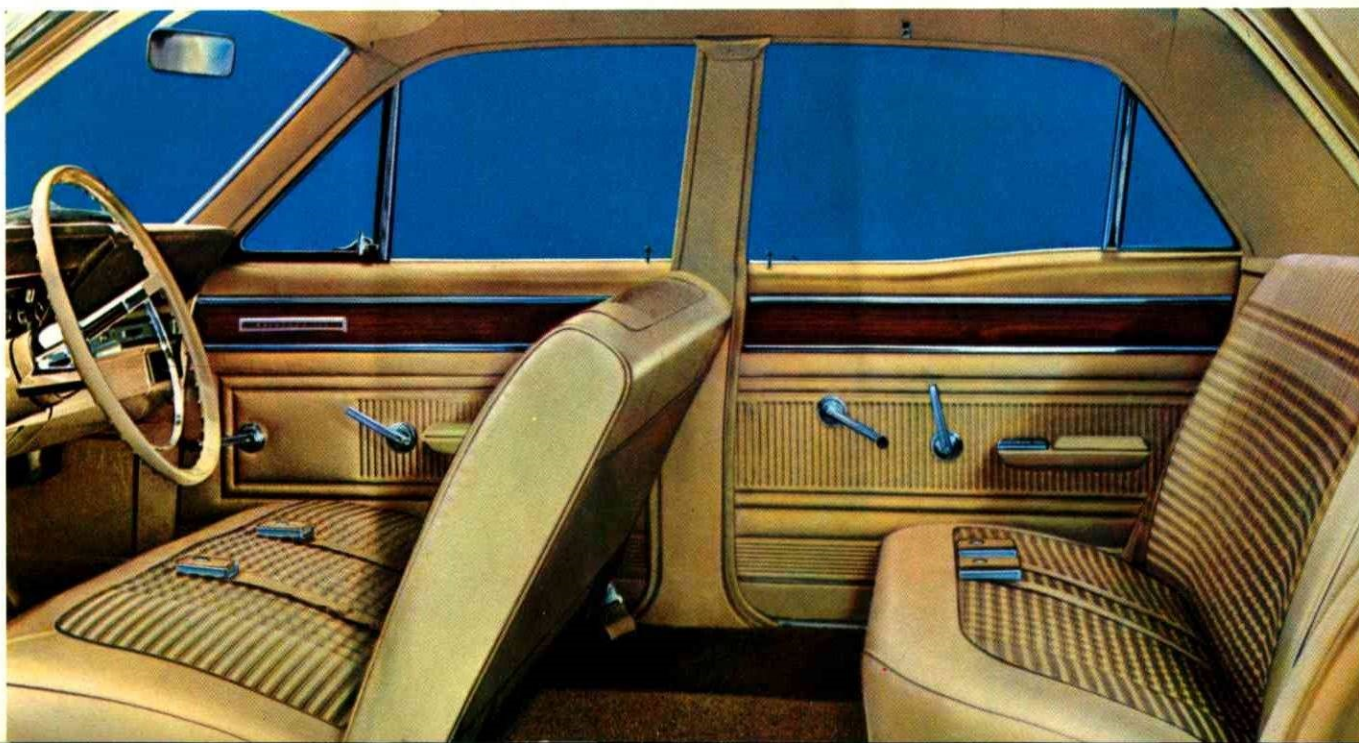
All-new heater design allows more passenger foot room. Improved air distribution provides "living room" comfort throughout the car in the coldest weather.

Fairlane 500's come in 4-Door Sedan and Club Coupe models. The spirited 200-cu. in. Six is standard and there's the optional 200-hp V-8 or the 265-hp Thunderbird V-8, for added power. New room, comfort and a solid reputation for quality make Fairlane a *better* buy than ever.

STANDARD EQUIPMENT HIGHLIGHTS ■ 120-hp Fairlane Six ■ 3-Speed Manual Transmission ■ Full Carpeting ■ Safety Courtesy Lighting ■ Front and Rear Seat Belts ■ Padded Instrument Panel and Sun Visors ■ Electric Windshield Wipers and Washers ■ Colour and Upholstery Choices: 15 Colours of Super Diamond Lustre Enamel; 5 Cloth and Vinyl Trims ■ Outside Rearview Mirror ■ Backup Lights ■ Suspended Accelerator Pedal ■ 14-Inch Low-Profile Tires. **POPULAR OPTIONS** (see also page 15) ■ 200-hp or 265-hp V-8's ■ Cruise-O-Matic Drive ■ Power Steering ■ Power Brakes ■ Engine Block Heater ■ Push-Button Radio ■ Deluxe Wheel Covers ■ White Sidewall Tires. **BASIC SPECIFICATIONS** ■ Length 197.0" ■ Width 74.0" (Club Coupe), 74.7" (4-Door) ■ Wheelbase 116.0" ■ Weight (approx.) 2933 lb. (4-Door), 2888 lb. (Club Coupe) ■ Trunk Volume 15.2 cu. ft.



Big Fairlane trunk has 15 cubic feet of usable luggage space. Sill is lowered to bumper level for easier loading and unloading.



Fairlane Sedan interiors are as comfortable as they are stylish. Choose from five attractive nylon and vinyl colour schemes.



Fairlane 500 4-Door Sedan



Fairlane 500 Club Coupe

Fairlane Wagons

The three new Fairlane wagons are more beautiful, more versatile than ever. All-new Fairlane styling and richly appointed all-vinyl interiors make these wagons equally at home in the field or at the club. Simply fold down the second seat—a one-handed operation—and you have 93.4 cu. ft. of loadspace (including 8.2 cu. ft. in the below-floor stowage compartment).

All three—Fairlane Squire (top right and on page 3), Fairlane 500 Wagon (right) and the Fairlane Wagon—carry six passengers with plenty of extra room for cargo. An optional third seat boosts seating capacity to eight. And Fairlane wagons have a new wider tailgate opening for easier loading.

Big news for '66 is Fairlane's Magic Doorgate. It swings down like a regular tailgate for cargo (top right), or swings open like a door for people (middle right). Makes Fairlane wagons easier to load and step into. It's all as simple as turning a handle! And it's standard on all Fairlane wagons. Fairlane wagons come with a 120-hp Six and 3-speed manual transmission. A 200-hp or 265-hp Thunderbird V-8 and Cruise-O-Matic Drive are optional. See your Ford Dealer for fullest details on the 1966 Fairlane wagon features.

STANDARD EQUIPMENT HIGHLIGHTS ■ 200-cu. in. 120-hp Six ■ 3-Speed Manual Transmission ■ Choice of 15 New Super Diamond Lustre Enamel Colours; 3 All-Vinyl Interior Trims (4 in Fairlane 500 and 5 in Squire) ■ Full Width Seats with Foam-Padded Cushions ■ Padded Instrument Panel and Sun Visors ■ Front and Rear Seat Belts ■ Ashtrays and Arm Rests ■ Magic Doorgate ■ Roll Down Rear Window ■ Suspended Accelerator Pedal ■ Foot Operated Parking Brake ■ Windshield Washers and Single-Speed Electric Wipers ■ Colour-Keyed Vinyl-Rubber Floor Mat (colour keyed carpets in Fairlane 500 and Squire) ■ Courtesy Lighting ■ Concealed Under-Floor Rear Stowage Compartment ■ Safety Yoke Door Latches ■ Reversible Keys ■ Outside Rearview Mirror ■ Back-up Lights ■ Curved Side Glass Windows ■ Cigarette Lighter. **POPULAR OPTIONS** ■ 200-hp or 265-hp V-8's ■ Cruise-O-Matic Drive ■ Power Brakes ■ Power Steering ■ Push-Button Radio ■ Deluxe Wheel Covers ■ White Sidewall Tires. **BASIC SPECIFICATIONS** ■ Wheelbase 113" ■ Overall Length 199.8" ■ Cargo Volume 93.4 cu. ft. ■ Overall Width 74.7".



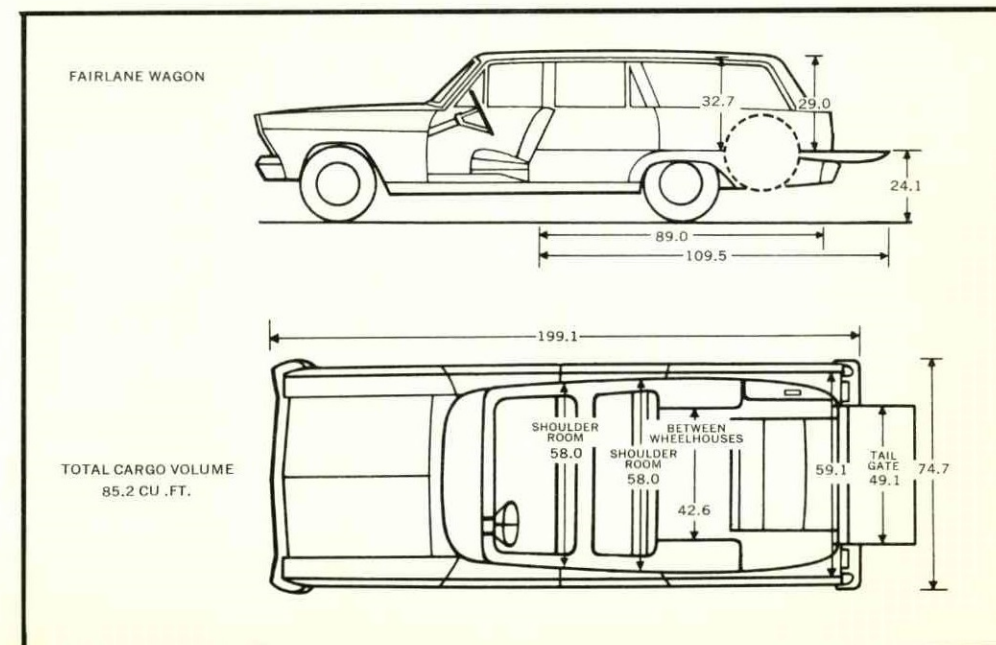
Fairlane 500 Wagon, one of three new '66 Fairlane wagons

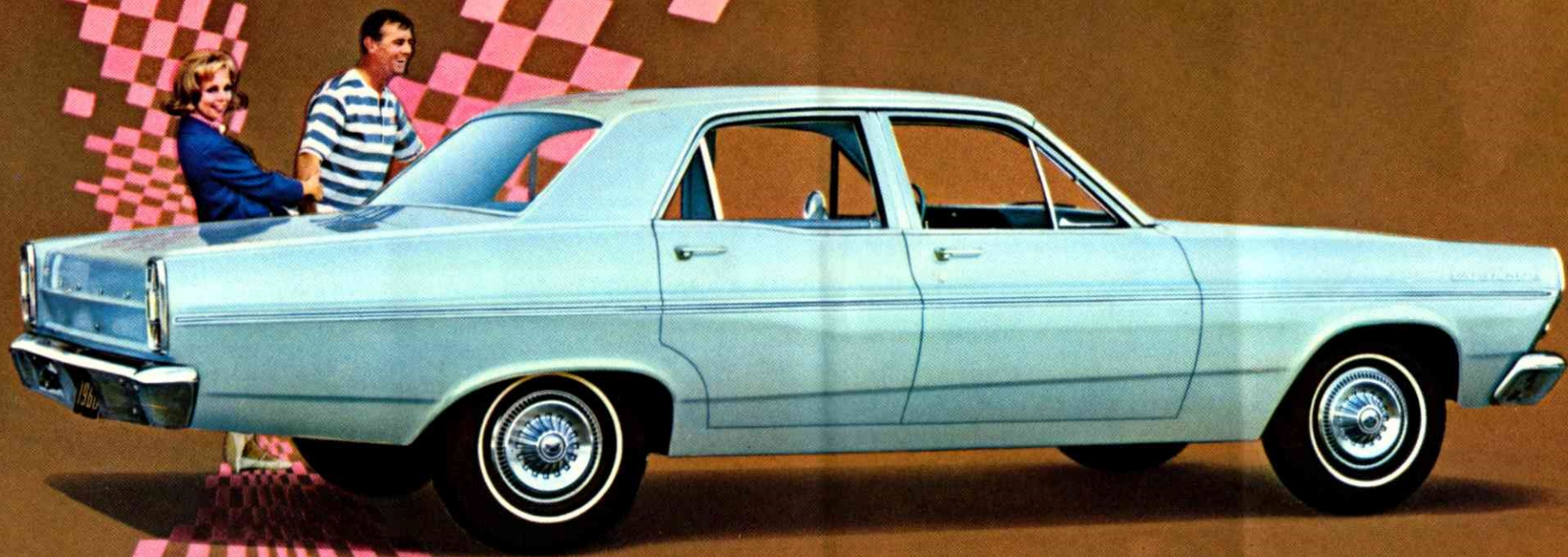


NOW IT'S A TAILGATE! Ford's exclusive Magic Doorgate used as a tailgate—simply release inside latch and lower.



NOW IT'S A DOOR! Ford's exclusive Magic Doorgate used as a door—just turn the outside door handle and open.





Fairlane 4-Door Sedan, also available in Club Coupe model

Fairlane

Any way you look at them, new Fairlane 4-Door Sedans and Club Coupes just have to be among the year's top values. Take styling. It's all new with smooth, clean body lines, curved side glass and bold, new grille. Fairlane is roomier than ever with a wider passenger compartment and more trunk space. Rides smoother, quieter and handles better, too.

When it comes to economy, Fairlanes show other cars how. The standard 200-cu. in. Six goes *real easy* on gas. And the famous Ford Extended Maintenance, battery-saving alternator, self-adjusting brakes and other service-savers stretch your driving dollars.

Fairlane's built better, too. Double-yoke door latches are huskier than ever. New door and window seals keep the passenger compartment snug in all weather. New Super Diamond Lustre Enamel adds a new look of quality.

Styling, comfort, ride, economy! Whatever angle you look from, Fairlane spells value . . . in CAPITAL letters. See and drive a '66 Fairlane Club Coupe or 4-Door Sedan!

STANDARD EQUIPMENT HIGHLIGHTS ■ 120-hp Fairlane Six ■ 3-speed Manual Transmission ■ Padded Instrument Panel and Sun Visors ■ Back-up Lights ■ Front and Rear Seat Belts ■ Outside Rear View Mirror ■ Windshield Washers and Single Speed Electric Wipers ■ Suspended Accelerator Pedal ■ Reversible Keys and Keyless Locking ■ Colour and Upholstery Choices; 15 colours of Super Diamond Lustre Enamel; 3 cloth and Vinyl Trims ■ Courtesy Lighting ■ Arm Rests, Ash Trays ■ Colour Keyed Vinyl-Rubber mats ■ Cigarette Lighter ■ Alternator ■ Sta-Full Battery ■ Ford's Extended Maintenance Features (back cover) ■ **POPULAR OPTIONS** ■ 200-hp or 265 hp-V-8's ■ Cruise-O-Matic Drive ■ Power Brakes ■ Power Steering ■ Push Button Radio ■ Engine Block Heater ■ White Sidewall Tires ■ **BASIC SPECIFICATIONS** ■ Wheelbase 116" ■ Overall Length 197" ■ Width 74" (Club Coupe), 74.7" (4-Door) ■ Weight (approx.) 2933 lb. (4-Door), 2888 lb. (Club Coupe) ■ Trunk Volume 15.2 cu. ft.



Design your Fairlane to reflect your personality. Choose from this full list of options.

● 200-hp 289-cu. in. Challenger V-8 ● 265-hp 390-cu. in. Thunderbird V-8 (275-hp with Cruise-O-Matic) ● 3-Speed Cruise-O-Matic Drive ● 4-Speed Manual Transmission (V-8's) ● Power Steering ● Power Brakes ● Push-Button AM Radio ● Power Rear Window (Wagons) ● Power Convertible Top ● Deluxe Seat Belts, Front and Rear ● Electric Clock ● Tinted Windshield ● Tinted Glass All-Around (GT, Squire only) ● Courtesy Light Group ● Two-Tone Paint ● Dual Accent Paint Stripe (Fairlane 500 and 500/XL models)—shown on page 7 ● White Sidewall Tires ● Deluxe Wheel Covers ● Heavy-Duty Battery ● Limited-Slip Differential ● Chrome Luggage Rack (Wagons) ● Rear-Facing Third Seat (Wagons) ● Immersion Block Heater. And . . . many more. See your Ford Dealer.



POWER BRAKES: Vacuum-assisted hydraulic type. Cut braking effort by 55%. Wide, low pedal with short travel affords fast braking response for greater safety.



DELUXE SEAT BELTS: Automatic retractor reels outside front belts in to seat side. Seat belt reminder light flashes red on instrument panel.



DELUXE WHEEL COVERS: Bright-finished, good-looking and distinctive. Complement Fairlane styling, work well with modern narrow band white walls.



CHROME LUGGAGE RACK: Two types available: new adjustable model (above) with sliding end rails to adapt to different loads or a conventional model with fixed end rails.

1966 Fairlane Specifications

COLOUR AND UPHOLSTERY SELECTIONS: Pick your favourite colour from 15 brilliant Super Diamond Lustre Enamel single tones, or 23 two-tone combinations. You have a total of 25 Fairlane upholstery choices of rich cloth and vinyl or all-vinyl combinations. Counting standard trims and options, you have 15 choices in the new hardtops and convertibles, 8 choices in sedans and 7 choices in wagons. (In some cases a trim is offered with more than one model.) Your Ford Dealer will be happy to show you actual samples of new Fairlane colours and upholstery.

ENGINES: 120-hp Fairlane Six (std. on all models except GT's and GTA's)—200-cu. in. displ.; 3.68" bore x 3.13" stroke; 9.2 to 1 comp. ratio; 7 main bearings; reg. fuel; single-barrel carb.; auto. choke; self-adj. valves; oil cap'y, incl. filter, 3.8 qt.

200-hp Challenger V-8 (opt. on all models except GT's and GTA's)—289-cu. in. displ.; 4.00" bore x 2.87" stroke; 9.3 to 1 comp. ratio; reg. fuel; 2-barrel carb.; auto. choke; self-adj. valves; oil cap'y, incl. filter, 4.2 qt.

265-hp Thunderbird V-8 † (opt. on all models except GT's & GTA's)—390-cu. in. displ.; 4.05" bore x 3.78" stroke; 9.3 to 1 comp. ratio; reg. fuel; 2-barrel carb.; auto. choke; self-adj. valves; oil cap'y, incl. filter, 4.2 qt.

†275-hp with Cruise-O-Matic Drive

315-hp Thunderbird Special V-8 (Squire only) 390 cu. in.; 4.05" bore x 3.78" stroke; 10.5 to 1 comp. ratio; prem. fuel; 4-barrel carb.; auto. choke.

335-hp Thunderbird Special V-8 (std. on GT's and GTA's).—Same specifications as 265-hp Thunderbird V-8 above plus dual exhausts, 4-barrel carburetor, higher lift cam, low-restriction air cleaner. Premium fuel required.

ENGINE FEATURES: Fairlane engine economy and durability are results of modern efficient design, high quality materials, and painstaking manufacture. Other contributing features: 6000-mile (or 6-month) full-flow oil filter; dry element air cleaner; year-round 190° thermostat; 12-volt electrical system; 38-amp. alternator; 54-plate battery; 45 amp-hr; weatherproof ignition with constant resistance wiring; air-cooled breaker points; positive-engagement starter; fully aluminized mufflers (dual mufflers of aluminized and stainless steel).

CLUTCH AND MANUAL TRANSMISSION: Clutch face diameter 9" with Six, 10" with 289 V-8 and 3-speed transmission, 10.4" with 289 V-8 and 4-speed transmission, 11" with 390 V-8. **3-Speed Manual Transmission** (std. with Six): synchronizers in 2nd and direct, anti-friction bearings throughout. Standard "H" shift pattern with lever on steering column. **Synchro-Smooth Drive Transmission** (std. with V-8's): with synchronized manual shifting in all three forward gears. **4-Speed Manual Transmission** (opt. with V-8's): fully synchronized forward gears with floor-mounted stick shift.

CRUISE-O-MATIC DRIVE: (opt. all engines, all models except GTA's)—Simplified design, lightweight, cast-aluminum construction. Torque converter combined with planetary gear set. Console-mounted selector lever (XL's and GT's). Three forward speeds, one reverse. Two selective drive ranges provide a 3-speed range starting in low for all normal driving, or 2-speed range starting in intermediate for more surefooted driving on slippery surface. Effective engine braking in low range for better control on grades and hilly driving.

13 FAIRLANE POWER TEAMS

ENGINES	TRANSMISSIONS
120-hp Fairlane Six*	A†, C
200-hp Challenger V-8	B†, C, D
265-hp Thunderbird V-8	B†, C, D
315-hp Thunderbird Special V-8 (Squire only)	B†, C
335-hp Thunderbird Special V-8 (GT, GTA)	B†, D, E**

Standard Equipment Key:

A—3-Speed Manual	C—Cruise-O-Matic Drive
B—Synchro-Smooth Drive (fully synchronized 3-speed manual)	D—4-Speed Manual
	E—Sport Shift Cruise-O-Matic

**All except GT, GTA
†Transmissions (as indicated)
**GTA Transmission only*

SPORT SHIFT CRUISE-O-MATIC: (standard and available only on GTA's)—Same basic construction as above with 3-speed automatic driving range plus a low and second gear for manual shifting.

REAR AXLE: Semi-floating type with deep-offset hypoid gears. Straddle-mounted drive pinion with 3 roller bearings (V-8's only). Induction-hardened, forged shafts with permanently lubricated wheel bearings.

FRONT SUSPENSION: Ball-Joint type with coil springs pivot-mounted on upper arms. Angle-Poised for anti-dive control. 36,000-mile (or 3-year) lube intervals. Strut-stabilized lower arms. Shock absorbers have all-weather fluid for better year-round ride control.

REAR SUSPENSION: Asymmetrical design with rear axle located forward of spring center for anti-dive and anti-squat resistance on braking and takeoff. Extra-long, leaf-type springs with wide spring base for more stable, leveled ride. All-weather shock absorber fluid for more uniform ride control.

STEERING: Recirculating-ball type steering gear provides easy handling. Linkage system lubricated for life. Overall steering ratio 29.4 to 1. Turning diameter 42 feet. Improved power steering option has flexible steering, shaft coupling to reduce road shock to steering wheel; ratio 20.6 to 1.

BRAKES: Self-adjusting, self-energizing design. Brakes adjust automatically when applied while car is moving backwards. 10-inch composite drums, grooved for extra cooling. Total lining area, sedans—153 sq. in., convertibles and wagons—172 sq. in., 390 V-8 sedans—172 sq. in., 390 V-8 wagons—191 sq. in.

TIRES: Low-profile design, 4-ply rating blackwall tubeless with Tyrex rayon cord. Safety-type rims. Basic size: 6.95 x 14, 7.75 x 14 std. on wagons, opt. all others. Tire sizes are determined in part by special equipment such as air-conditioning. See your Ford Dealer for complete details.

DIMENSIONS AND CAPACITIES: Overall length 197"; height 55" (sedans), 54.3" (hardtops), 53.9" (convertibles); width 74.0"; wheel-base 116"; treads—58" front and rear; fuel 16.7 gal.; oil 3.8 qt. (Six), 4.2 qt. (V-8); cooling system (with heater) 7.6 qt. (Six), 12.5 qt. (V-8).

EXTENDED MAINTENANCE: '66 Fairlanes are designed to go 6,000 miles (or 6 months) between minor chassis lubrications; 36,000 miles (or 3 years, whichever comes first) between major chassis lubes. Other '66 Fairlane service-savers include 36,000-mile (or 2-year) engine coolant-antifreeze, self-adjusting brakes, long-life Sta-Ful battery, sealed alternator on V-8's, rust- and corrosion-resistant aluminized muffler and galvanized major underbody parts. The '66 Fairlane needs so little service it's just good sense to see that it gets the best—at your Ford Dealer's. His Registered Service Technicians and special tools add up to a great service combination you can get *nowhere* else! Check your Owner's Manual for full details of Extended Maintenance.

THIS IS YOUR DEALER'S NEW CAR WARRANTY: Ford Motor Company of Canada, Limited has warranted to the Dealer who, pursuant to his Dealer Agreement with the Company, hereby, on his own behalf, warrants to the owner each part of this product marketed by Ford Motor Company of Canada, Limited to be free under normal use and service from defects in material and workmanship for a period of 24 months from the date of delivery to the original retail purchaser or until it has been driven for 24,000 miles, whichever comes first. This warranty shall be fulfilled by the Dealer (or if the owner of the vehicle is travelling or has become a resident of a different locality, by any authorized Dealer of Ford Motor Company of Canada, Limited) replacing or repairing at his place of business, free of charge including related labour, any such defective part.

This warranty shall not apply to (i) tires or tubes (appropriate adjustments for them being provided by their manufacturers), or (ii) to normal maintenance services (such as engine tune up, fuel system cleaning and wheel, brake and clutch adjustments), or (iii) to normal replacement of service items (such as filters, spark plugs, ignition points, wiper blades and brake or clutch linings), or (iv) to deterioration of soft trim and appearance items due to normal use and exposure.

This warranty is expressly in lieu of any other express or implied conditions and warranties, including any implied warranty of merchantability or fitness, and of any other obligation on the part of the Dealer.

The specifications contained herein were in effect at the time this catalogue was approved for printing. However because of continuing product improvements and refinements Ford Motor Company of Canada Limited reserves the right to change specifications or design at any time or discontinue models without notice and without incurring obligation. Mileage figures quoted herein refer to normal driving conditions.

Ford Motor Company of Canada, Limited

