

# '66 FORDS

*America's Total Performance Cars*



**Ford**



**Fairlane**



**Falcon**



**Mustang**



**Wagons**



**Thunderbird**





New LTD by Ford . . . 4-Door Hardtop



New Fairlane GT Hardtop



New Ford Country Squire

***In the Greatest Year Yet  
For Total Performance,  
There Are . . .  
49 NEW WAYS  
TO GO FORD!***

For '66, Ford has the newest, finest, most exciting array of cars ever seen on the American Road . . . 19 sparkling new full-size Fords . . . 13 all-new Fairlanes . . . 10 sporty new Falcons . . . 3 Mustangs and 4 regal Thunderbirds.

***Start with the 1966 Ford . . .*** where "Ford Quiet" says quality, "Powered by Ford" says performance, and "Features by Ford" mean new luxury and convenience! New optional Stereo-sonic Tape System lets you enjoy up to 80 minutes of uninterrupted music in "living" stereo. An all-new series . . . Galaxie 500 7-Litre . . . offers you a high-performance hardtop and convertible with a new 345-hp Thunderbird 428 V-8\*, new power front disc brakes\* . . . among many other standard features.

***Fairlane! New dazzle! New go for '66!*** It's still the rugged, reliable family car, but with all-new performance! New convertibles, new bucket-seat XL's, hot new GT's and GTA's with 390-cu. in. V-8's, GT stripes, console-mounted shift and bucket seats. Just one sample of Fairlane excitement for '66: new Cruise-O-Matic Sport Shift on GTA's. You can go fully automatic, or shift it for yourself like a manual.

\*Optional on other models



**Big surprise—1966 Falcon.**

America's economy champ has a sporty new look for '66. You get the low price and big economy that's put Falcon into its third million—with no compromise on style, strength, roominess or ride!

**We changed Mustang—very carefully.** If you thought we couldn't improve on a winner, try Mustang '66! New grille. New ornamentation. New luxury options to add to the more than 70 already offered. AM Radio/Stereo-sonic Tape System is one. But all the driving fun that makes Mustang America's favorite fun car is still yours for the asking in *any* '66 Mustang!

**Thunderbird '66...unique in all the world.** Now there are *four* Thunderbirds—new Town Landau and Town Hardtop add new luxurious style and distinction. Options like Stereo-sonic Tape System . . . Highway Pilot Controls . . . new 345-hp Thunderbird 428 V-8 and others add new luster to Thunderbird's great reputation.

**New Ford wagons for '66!** America's wagon specialist, Ford, brings you 13† new wagons for '66 with dozens of years-ahead features. Topping the list is the remarkable new Magic Doorgate (see pages 14 and 15). It's the wagon sensation of '66 . . . and it's available *only* on Ford-built wagons!

So, start here to find out about all 49 new models from Ford for 1966. (See complete listing on back cover.) Then see your Ford Dealer for a test drive.

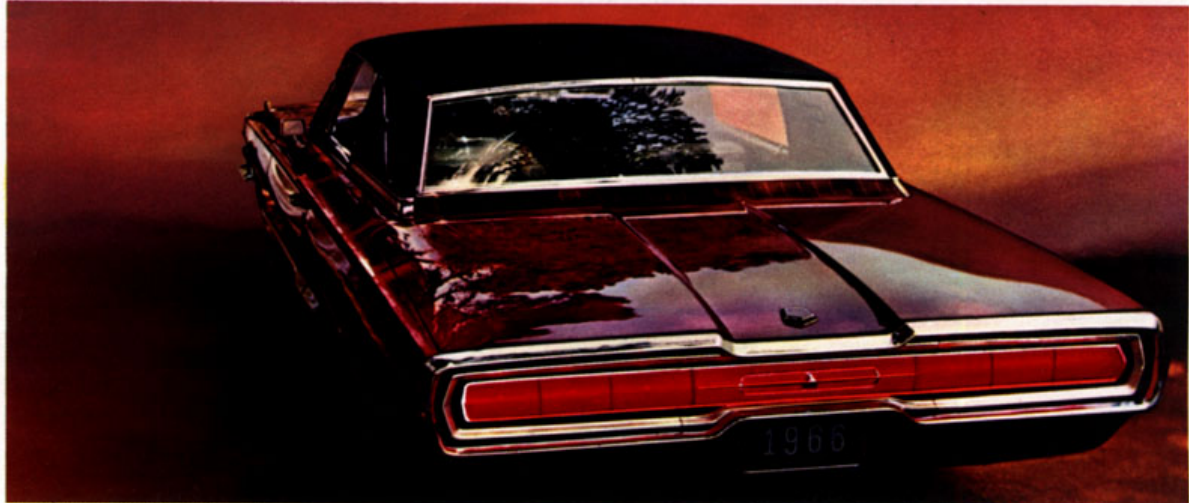
†Including three Falcon Club Wagons



New Falcon Futura Sports Coupe with optional vinyl roof covering



New Mustang GT Hardtop



New Thunderbird Town Landau





LTD by Ford . . . 2-Door Hardtop (4-Door shown on page 2)



Galaxie 500 7-Litre Convertible



Galaxie 500/XL 2-Door Hardtop

## 1966 Fords

In the 1966 Ford, quiet speaks for quality . . . deep-through quality that is most obvious in Ford's famous ride. Smooth, soft, gently controlled . . . marvelously quiet. Solid Ford engineering advances make ride news again for 1966.

The '66 Fords bring you new styling with the look of quiet elegance. New interior richness. Features newer than any you've known in any automobile before. New multi-speaker Stereo-sonic Tape System\* for full, rich stereo depth and dimension as you drive. Automatic Speed Control\* that lets you cruise with your foot off the accelerator. Safety/Convenience Control Panel\* with automatic door locks, lights to signal "door ajar," "low fuel," and to remind you to fasten your seat belts.

There's an exciting new series of '66 Fords—the 7-Litre Hardtop and Convertible. A new 428-cu. in. V-8† and power front disc brakes† head a long list of 7-Litre standard equipment.

"Powered by Ford" in '66 means your choice of the longest, strongest power team lineup Ford has ever offered. Eight engines—including a new 390-cu. in., 275-hp regular gas Thunderbird V-8 and new 345-hp Thunderbird 428 V-8. Four transmissions—3-speed, sporty 4-speed\*, Overdrive\* and 3-speed Cruise-O-Matic.\*

To find out how new '66 Fords really are, drive one at your Ford Dealer's.

### '66 Ford Highlights

19 Models in 7 Series: 5 Sedans, 6 Hardtops, 3 Convertibles, 5 Wagons □ Wheelbase—119" □ Overall Length—210" □ Trunk Luggage Vol. (cu. ft.)—19.1 □ Std. Engine—345-hp Thunderbird 428 V-8 (7-Litre), 200-hp Challenger V-8 (LTD, XL), 150-hp Big Six (all others) □ Std. Trans.—Cruise-O-Matic (LTD, XL, 7-Litre), Synchro-Smooth Drive (fully sync. 3-spd. man.) (all others) □ Options—7 V-8's (200-425 hp); 3 Trans. (Cruise-O-Matic, 4-Spd. Man., Overdrive)

\*Optional †Optional in other models

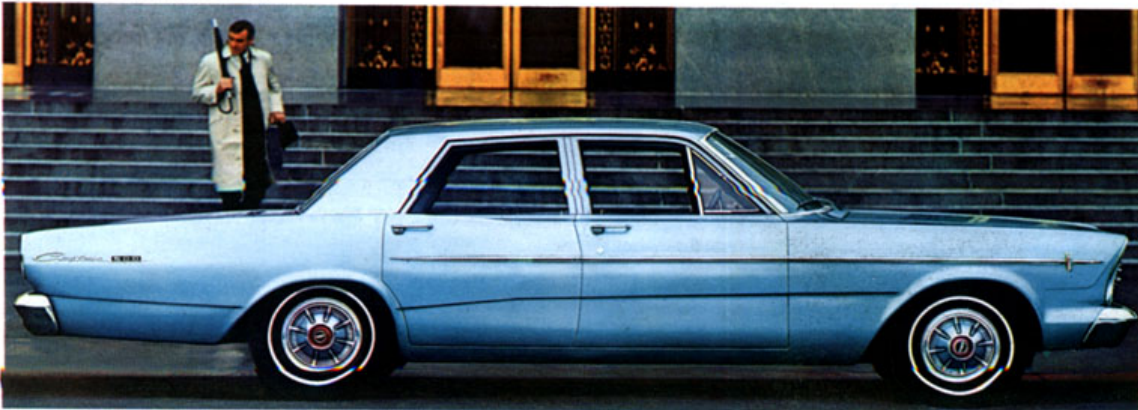




Ford Galaxie 500 4-Door Hardtop



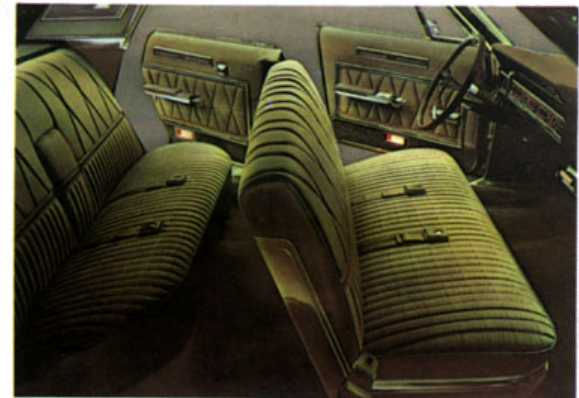
Ford Galaxie 500 4-Door Sedan



Ford Custom 500 4-Door Sedan



New Stereo-sonic Tape System.\* As many as four speakers surround you with nearly an hour and a half of "living" sound. Simply select a tape cartridge, insert it in the player, sit back and relax to real stereo. It's available on all of Ford's 19 new models.



LTD interiors (4-door shown above) offer you luxury once reserved for the costliest cars. Finely tailored fabrics. Woodlike trim enhances doors and instrument panel. Interiors on XL's and 7-Litres (below) feature deep-foam, shell-contour bucket seats, which adjust individually; 7 leather-smooth all-vinyl trim choices.







Special GT and GTA identification



Exclusive to '66 Fairlane GTA is new Sport Shift Cruise-O-Matic Drive, which permits both manual and automatic shifting. For manual gear changing, move shift lever back to Low (1) and upshift through 2nd (2) and into High or Drive (D). For fully automatic shifting, simply move lever to Drive and go!

Fairlane GT Convertible



Fairlane 500/XL Hardtop (Fairlane GT Hardtop shown on pg. 2)

## 1966 Fairlane

How much can a car change in just one year? You'll never know till you try a new Fairlane. Try out the interior for its new luxury, comfort and family-size room. Try it out on the road and experience a new smooth, quiet ride and a new kind of easy handling that will *really* surprise you. And try the response of the full range of engines from a quick 200-cu. in. Six to a 4-barrel Thunderbird Special 390-cu. in. V-8!

New Fairlanes come in a complete line of 13 models to suit the taste of every driver, every family. For performance buffs, there's a new GT series that features the Thunderbird Special V-8 with floor-shift Synchro-Smooth Drive as standard. A remarkable new Sport Shift Cruise-O-Matic that lets you shift *manually* or *automatically* makes the GT a GTA (see center left). For bucket-seat luxury, there's a new Fairlane 500/XL series with the accent on fun. New Fairlane 500's offer a hardtop, convertible, club coupe and 4-door sedan with plenty of comfort and convenience built in. A budget-priced Fairlane Club Coupe and 4-Door Sedan plus three smart wagons (see pages 14-15) round out the line.

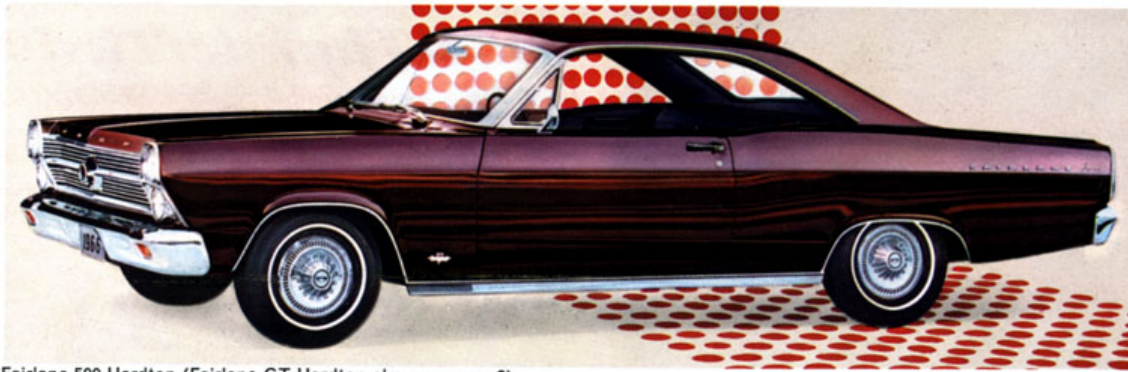
Standard features include many items you'd expect to pay extra to get. Suspended accelerator pedal, Ford's unique reversible key, padded instrument panel and sun visors, windshield washers, emergency flasher and seat belts are a partial listing. And a complete line of options helps you design your Fairlane to be exactly the car you want it to be.

See how Fairlane measures up to everything you want in a car. Styling, ride, comfort, performance . . . and *price!* Try the Fairlane formula! See your Ford Dealer today.

### '66 Fairlane Highlights

13 Models in 5 Series: 3 Hardtops, 3 Convertibles, 2 4-Door Sedans, 2 Club Coupes, 3 Wagons (see pages 14-15) □ Wheelbase—116" □ Overall Length—197" □ Trunk Luggage Vol.—15.2 cu. ft. □ Std. Engine—335-hp Thunderbird Special V-8 (GT & GTA), 120-hp Fairlane Six (all others) □ Std. Trans.—3-Spd. Manual □ Options—3 V-8's (200-335 hp); 3 Transmissions (Cruise-O-Matic, 4-Speed Manual, Overdrive)





Fairlane 500 Hardtop (Fairlane GT Hardtop shown on pg. 2)



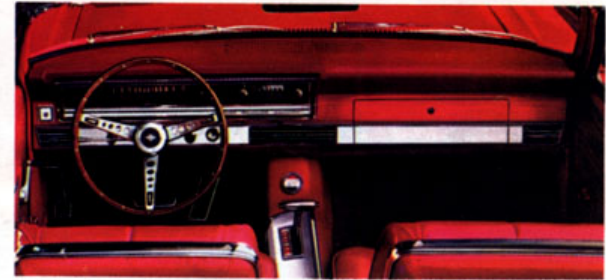
Fairlane 500 Club Coupe



Fairlane 4-Door Sedan



Fairlane GT and 500/XL hardtops and convertibles have new contoured bucket seats, which adjust individually, all-vinyl trim, console-mounted shift lever. Also standard: padded instrument panel, sun visors.



Fairlane GT instrument panel (above), like all Fairlanes, conveniently groups instruments, optional radio and air-conditioner controls. Wood-toned sports steering wheel is optional. Fairlane 500/XL Convertible interior (below) is available in seven all-vinyl trims. Convertible top is of durable 5-ply vinyl with a solid glass rear window.

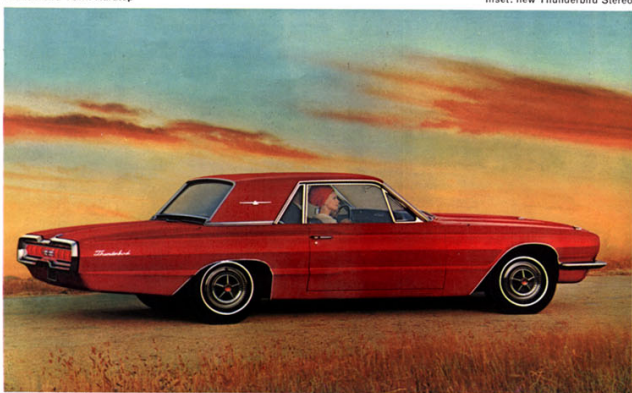






Thunderbird Town Hardtop

Inset: new Thunderbird Stereo



8 Thunderbird Hardtop

## 1966 Thunderbirds

Once again, Thunderbird leads the way in *personal* luxury . . . the concept Thunderbird originated a decade ago. As you would expect of the great innovator, the 1966 ideas are bold and brilliant.

There are unique ideas in styling that create two captivating new models: Town Hardtop and Town Landau. These cars capture all the verve and elegance of the conventional Thunderbird and add a dash of ultra-sophistication all their own. And there are new interpretations of unique Thunderbird ideas: Sequential Turn Signals now set in sweeping, full-width taillights!

A magnificent idea: the AM Radio/Stereo-sonic Tape System\* that gives you the richness of the living performance with multiple speakers and the convenience of self-contained tape cartridges. Your own personal world of music at your fingertips.

You'll experience flightlike freedom under way with new Highway Pilot Controls.\* For the turnpike, push "set speed" control, take your foot off the accelerator. "Retard/resume" control disengages

Highway Pilot, provides mild braking, then lets you return to pre-selected speed.

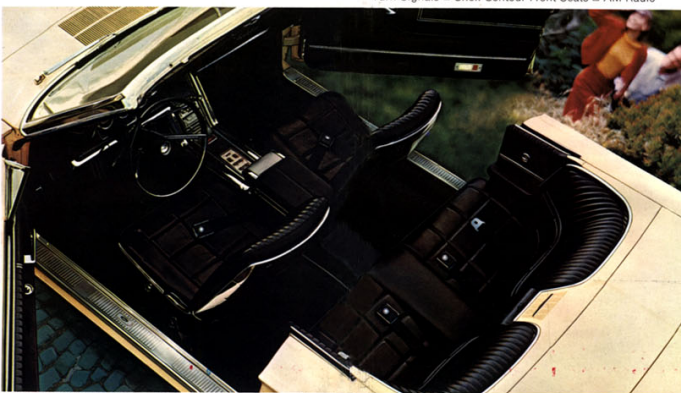
The Overhead Safety Panel, standard in Town models, is your flight control center. It contains warning lights for "door ajar," "low fuel," seat belt reminder light, plus emergency flasher switch and indicator. A glance tells you when you're ready to take off.

For 1966 there is a more powerful 315-hp standard Thunderbird Special V-8 plus an all-new 345-hp Thunderbird 428 V-8.\* Cruise-O-Matic turns this power into silk-smooth action.

Throughout the 1966 Thunderbird there is new evidence that Thunderbird remains . . . unique in all the world. Experience personalized luxury for yourself. Flight-test the new '66 Thunderbird at your Ford Dealer's.

### '66 Thunderbird Highlights

4 Models: Hardtop, Town Hardtop, Convertible, Town Landau  
☐ Wheelbase—113" ☐ Overall Length—205.4" ☐ Trunk Luggage Vol. (cu. ft.)—11.5 (Hardtops, Landau), 6.1 (Convertible) ☐ Standard Equipment—315-hp Thunderbird Special V-8 ☐ Cruise-O-Matic Drive ☐ Power Steering ☐ Power Brakes (disc front wheel brakes) ☐ Swing-Away Steering Wheel ☐ Sequential Turn Signals ☐ Shell-Contour Front Seats ☐ AM Radio



Thunderbird interior with deep-foam shell-contour bucket seats and cowl rear seat with folding center arm rest



Thunderbird Town Landau



Thunderbird Convertible







# 1966 Mustangs

For '66, we did the nicest thing we could think of—we changed Mustang very carefully. There's smart new ornamentation all around, as you will notice on the Hardtop, Convertible and Fastback 2+2. Also new (and standard) are a 5-dial instrument cluster, 14-inch low-profile tires and full wheel covers.

But the standard features that give Mustang all its potent charm remain. Bucket seats, pleated vinyl trim, sports steering wheel, 3-speed floor shift, frisky 200-cu. in. Six, padded instrument panel and sun visors, full carpeting, heater-defroster\*, front and rear seat belts.

And Mustang's long list of options—more than 70 of them—are here for '66. There's the Mustang GT Equipment Group with its distinctive fender badges and GT stripe. A pair of 4-inch fog lamps are mounted in the grille. For power you can choose either the 225-hp Challenger Special V-8† or the 271-hp Cobra V-8†. Special Handling Package, fade-resisting front disc brakes round out the GT group.

To give Mustang an interior of superb luxury, choose the rich Interior Decor Group. This option is really a *number of luxuries*: richly embossed seat inserts, pleated door panels, walnutlike paneling in the instrument panel, glove box door and separately available console. Wood-toned deluxe steering wheel has competition-type perforated metal spokes. Pistol-grip door handles, built-in arm rests and safety-courtesy door lights . . . among others in the Decor Group . . . lend custom-tailored elegance to any Mustang.

One of the most exciting of all Mustang options is the new AM Radio/Stereo-sonic Tape System. It opens a whole new world of entertainment to you. Self-

contained tape cartridges and multiple speakers give you up to 80 minutes of uninterrupted music . . . all in "living" stereo.

Best of all, nearly all the more than 70 Mustang options are available with any Mustang. More than ever, Mustang is designed to be designed by you! For sports buffs, there's the GT group described earlier, the Rally Pac (with tachometer and clock combination), Special Handling Package and front disc brakes.

If it's appearance you're after, choose from two styles of console, deluxe steering wheel, styled chrome-plated steel wheels, and vinyl roof covering. For comfort and convenience, there's Ford Air Conditioner, full-width seat with center arm rest and the Visibility Group which includes a remote-controlled outside mirror. And we've just begun to scratch the surface.

Mention Mustang and you've set off a lively conversation. All about fun, excitement, going places and doing things. Proof? Over 418,000 on the road in Mus-

tang's first year, an all-time record! Why? Because Mustang is a personal luxury car, family car, performance car, or anything in between.

So, don't be content to just talk about Mustang. See and drive the '66 Mustang at your Ford Dealer's. You'll find out why Mustang is America's favorite fun car.

## '66 Mustang Highlights

3 Models: Hardtop, Convertible, Fastback 2+2  
 □ Wheelbase—108" □ Overall Length—181.6"  
 □ Trunk Luggage Vol. (cu. ft.)—9 (Hardtop), 7.7 (Convertible), 5 (2+2) □ Std. Engine—120 hp (200 cu. in.) Six □ Std. Trans.—3-Spd. Manual (floor-mounted shift) □ Options—3 V-8's (200, 225 and 271 hp); 2 Trans. (Cruise-O-Matic, 4-Speed Manual)

\*See "Prices" on back cover †Optional



Distinctive GT Fender Badges†



Fade-resistant Front Disc Brakes†



Mustang's Special Handling Package† (heavy-duty suspension, 22 to 1 steering ratio)



271-hp., 289-cu. in. Cobra V-8†



Sports-type 4-Speed Stick Shift†



Special GT Low-Restriction Exhaust and Chrome Tailpipe Extensions†





Falcon Futura Sports Coupe (shown with optional vinyl roof covering on page 3)



Falcon Futura Club Coupe

## 1966 Falcons

This year you get all of Falcon's famous thrift and handling ease wrapped up in a brand-new package! America's all-time economy champ still saves you money every day, every mile. But look how Falcon's changed! Beneath this bold, new long-hood/short-deck design lies one of the toughest cars on the road. Beefy, integral body-frame structure makes Falcon stronger, more durable. Longer wheelbase, wider treads and numerous suspension improvements make it ride like no other compact. Inside Falcon's bigger, too, with more room than ever for six.

For '66 there are 10 brand-new Falcons to choose from. Heading the list is a snappy, new Futura Sports Coupe. Bucket seats, deluxe wheel covers, a sporty accent stripe and the lively 200-cu. in. Six are standard on this one. For plenty of comfort and luxury, there are the Futura 4-Door Sedan and Club Coupe with plush interiors, wider door openings and greater shoulder room. The Falcon 4-Door Sedan and Club Coupe—two of America's lowest-priced cars—feature good looks, comfort and convenience. And to round out the line there are five versatile wagons\* (pages 14-15).

A full list of options, including a 289-cu. in. V-8, Cruise-O-Matic Drive and a 4-speed stick, lets you pick from nine engine-transmission combinations. Falcon's famous service-savers head the economy list. Twice-a-Year Maintenance, alternator, Sta-Ful battery . . . see back cover for even more.

Test-drive a new Falcon at your Ford Dealer's now. For style, action and savings like you've never seen before, see Falcon, the best buy in compact history.

### '66 Falcon Highlights

10 Models in 3 Series: 1 Sports Coupe, 2 4-Door Sedans, 2 Club Coupes, 5 Wagons\* (see pages 14-15) □ Wheelbase—111" □ Overall Length—184.3" □ Trunk Luggage Vol.—12.5 cu. ft. □ Std. Engine—105-hp Falcon Six (Sedans & Club Coupes), 120-hp Fairlane Six (Sports Coupe & Wagons) □ Std. Trans.—3-Speed Manual □ Options—120-hp Fairlane Six, 200-hp Challenger V-8, Cruise-O-Matic Drive, 4-Speed Manual

\*Including three Falcon Club Wagons





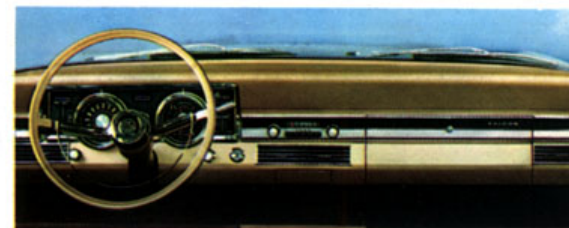
Falcon Futura 4-Door Sedan



Falcon Club Coupe



Plush, wide bucket seats, wall-to-wall carpeting and your choice of six all-vinyl trims are standard on the Falcon Futura Sports Coupe. Lively 200-cu. in. Fairlane Six is another standard feature.



Forward-sweeping instrument panel (above) with full padding is standard (padded sun visors are also standard) on all Falcons. Falcon Futuras feature luxurious nylon-and-vinyl interiors (below).







Now it's a door . . . for easier entry or close-up loading. New Magic Doorgate is shown on the '66 Ford Country Squire. Notice the dual-facing rear seats in this model.



Now it's a tailgate! Used as a conventional tailgate, the Magic Doorgate extends the loadspace for long cargo, can also serve as a platform or picnic table.



Falcon Futura Wagon offers five all-vinyl trims



Ford Country Sedan (Ford Country Squire shown on page 2)



Falcon Futura Wagon

## 1966 Wagons by Ford

What's newest in wagons? Ask Ford, famed for great wagons, great wagon ideas. You've a total of 13 wagons to choose from in Ford, Fairlane and Falcon. There are three Sixes and six V-8's that go up to 345 hp. And 3-speed Cruise-O-Matic\* is available with every engine in every wagon. \*Optional

Biggest surprise in Ford wagons is the unique Magic Doorgate. Lower it like a tailgate or swing it open like a door. It's standard on all Ford wagons. Other Ford exclusives are built-in air deflectors and two dual-facing rear seat models.

Fairlane wagons come in three models for '66





Fairlane Squire Wagon



Fairlane 500 Wagon



Fairlane Squire interior (above) comes in a choice of five attractive all-vinyl trims. Wall-to-wall carpeting is standard. Fairlane 500 Wagon interiors identical.



The unique Magic Doorgate (std. on Fairlane Wagons) makes entering Fairlane's optional third seat easier than ever. Simply swing the Doorgate aside and step in.



Club Wagons are the extra-big Falcons

with a brand-new Squire leading the way. Inside, there's more than enough room for six—or eight passengers with Fairlane's rear seat.\* Cargo space adds up to a generous 93.4 cu. ft. Ford's Magic Doorgate is standard on all Fairlane wagons.

Falcon wagons are bigger *inside and out* for '66.

There's more shoulder and leg room and a cargo space that's increased over 11%. And Ford's great, new Magic Doorgate is optional. Three Falcon Club Wagons provide 194 cu. ft. of cargo space.

See and drive the new Ford wagons—and try the Magic Doorgate—at your Ford Dealer's now!

### '66 Wagon Highlights

13 Models in 4 Sizes □ Length (wheelbase/overall): Ford 119/210"; Fairlane 113/199.8"; Falcon 113/198.7"; Club Wagons 90/167.5" □ Cargo Vol. (cu. ft.): Ford 103†; Fairlane 93.4†; Falcon 86.7; Club Wagons 194.0. Engine HP (std./top opt.): Ford 150/345; Fairlane 120/335; Falcon 120/200; Club Wagons 105/150.

†Including 12 and 8.2 cu. ft. respectively in below-floor compartments



# '66 FORDS *America's Total Performance Cars*

## 49 Total Performance Models

FORD		FAIRLANE	
LTD by Ford	2-Door Hardtop & 4-Door Hardtop	Fairlane GT & GTA	2-Door Hardtop & Convertible
Galaxie 500/XL	2-Door Hardtop & Convertible	Fairlane 500/XL	2-Door Hardtop & Convertible
Galaxie 500 7-Litre	2-Door Hardtop & Convertible	Fairlane 500	2-Door Hardtop, Convertible, Club Coupe & 4-Door Sedan
Galaxie 500	2-Door Hardtop, 4-Door Hardtop, Convertible, 4-Door Sedan	Fairlane	Fairlane Squire, Fairlane 500 Wagon & Fairlane Wagon
Custom 500	2-Door Sedan, 4-Door Sedan	Falcon	Sports Coupe, Club Coupe & 4-Door Sedan
Custom	2-Door Sedan, 4-Door Sedan	Falcon Wagons	Club Coupe & 4-Door Sedan
Ford Wagons	Country Squire, Country Squire with Dual-Facing Rear Seats, Country Sedan, Country Sedan with Dual-Facing Rear Seats, Ranch Wagon	Falcon Wagon	Falcon Futura Wagon, Falcon Wagon
THUNDERBIRD		Club Wagons	Club Wagon
Thunderbird Town Landau			Custom Club Wagon
Thunderbird Town Hardtop			Deluxe Club Wagon
Thunderbird Convertible			
Thunderbird Hardtop			
		MUSTANG	
		Mustang Fastback 2+2	
		Mustang Convertible	
		Mustang Hardtop	

**TWICE-A-YEAR MAINTENANCE:** The new total performance cars from Ford are designed to go 6,000 miles (or 6 months) between oil changes and minor chassis lubrications; 36,000 miles (or 3 years), whichever comes first) between major chassis lube. Other '66 service-savers include: 36,000-mile (or 2-year) engine coolant-antifreeze, self-adjusting brakes, long-life Sta-Ful battery, shielded alternator, rust- and corrosion-resistant aluminized muffler and galvanized underbody parts. Every new car built by Ford needs so little service it's just good sense to see that it gets the best—at your Ford Dealer's. His factory-trained mechanics and special tools add up to the greatest service combination for your Ford.

\*Except Falcon Club Wagons each 6,000 miles or 6 mos., Thunderbird each 100,000 miles or 3 years.

**FORD TRAILER TOWING RECOMMENDATIONS** are included, along with much additional helpful information, in the "1966 Ford Cars & Trucks For Recreation" brochure.

**PRICES:** Heater-defroster is included as standard equipment on all models. However, heater-defroster may be deleted (except for Thunderbird) on car order if desired at an appropriate price reduction. All power assists, optional equipment and accessories as well as some items illustrated or referred to as options, optional or available are at extra cost. For the price of the Mustang, Falcon, Fairlane, Ford or Thunderbird with the equipment you desire, consult your Ford Dealer.

The illustrations and product information contained herein were current at the time this publication was approved for printing. However, in order to continue to offer the finest automotive products available, Ford Motor Company reserves the right to change specifications, designs, models or prices without notice and without liability for such changes.

Every 1966 Ford-built car was designed step by step to be a safer, more convenient, economical and enjoyable automobile. Such protective items as front and rear seat belts, padded instrument panel and sun visors, deep-dish steering wheel, Safety-Yoke door latches, turn signals, backup lights, emergency flasher and many others are standard equipment in every Ford-built car\*. . . designed into the car for greater safety.

Safety authorities agree: Safe driving means proper use of the automobile and its safety equipment, strict obedience to traffic laws at all times and—most importantly—development of the alert, defensive driving habits that are the motorists' best protection against unsafe conditions on the road.

\*Falcon Club Wagons have certain equipment exceptions

## 28 Total Performance Power Teams

CAR LINE	ENGINE	HORSE-POWER	DISPL. CU. IN.	COMP. RATIO	CARB. & FUEL	TRANSMISSION OPTIONS				AVAILABLE WITH MODELS (note exceptions)
						CLUB WAGONS	WAGONS	LTD, XL & 7-Litre	OTHER MODELS	
FORD	Big Six	150	240	9.2	1V Reg.		B*-C-E		B*-C-E	Std. all except LTD, XL and 7-Litre
	Challenger V-8	200	289	9.3	2V Reg.		B*-C-E	C*	B*-C-E	Std. LTD and XL, opt. others except 7-Litre
	352 Cu. In. V-8	250	352	9.3	4V Reg.		C	C*	C	Opt. all except 7-Litre
	Thunderbird V-8	275	390	9.5	2V Reg.		C	C*	C	
	Thunderbird Special V-8	315	390	10.5	4V Prem.		B*-C	C-D	B*-C-D	Std. 7-Litre, opt. others
	Thunderbird 428 V-8	345	428	10.5	4V Prem.		C	C-D	C-D	
	Cobra 427 4V V-8	410	427	11.1	4V SP			D	D	Opt. all except Wagons
	Cobra 427 V-8	425	427	11.1	8V SP			D	D	
FAIRLANE	Fairlane Six	120	200	9.2	1V Reg.		A*-C		A*-C	Std. all except GT-GTA
	Challenger V-8	200	289	9.3	2V Reg.		B*-C-E		B*-C-D-E	Opt. all except GT-GTA
	Thunderbird V-8	265†	390	9.5	2V Reg.		B*-C		B*-C-D	
	Thunderbird Special V-8	335	390	10.5	4V Prem.		B*-C		B*-C†-D	Std. GT-GTA, opt. others
T-BIRD	Thunderbird Special V-8	315	390	10.5	4V Prem.				C*	Opt. all models
	Thunderbird 428 V-8	345	428	10.5	4V Prem.				C*	
MUSTANG	Six	120	200	9.2	1V Reg.				A*-C-D	Opt. all Models
	Challenger V-8	200	289	9.3	2V Reg.				B*-C-D	
	Challenger Special V-8	225	289	10.0	4V Prem.				B*-C-D	
	Cobra V-8	271	289	10.5	4V SP				C-D	
FALCON	Falcon Six	105	170	9.1	1V Reg.		B*-C		A*-C	Std. all exc. Futura Sports Cpe. Falcon and Futura Wagons
	Fairlane Six	120	200	9.2	1V Reg.		A*-C		A*-C	
	Big Six	150	240	9.2	1V Reg.		B*-C			Std. Futura Sports Coupe, Falcon and Futura Wagons, opt. others
	Challenger V-8	200	289	9.3	2V Reg.		B*-C		B*-C-D	

Key: A—3-Speed Manual (sync. 2nd and 3rd gears) B—Synchro-Smooth Drive (fully sync. 3 spd., manual)  
 C—Cruise-O-Matic Drive (3-speed automatic) D—4-Speed Manual (fully sync.) E—Overdrive  
 \*Standard †Sport Shift Cruise-O-Matic (Fairlane GTA only) V—Barrel (carb.) SP—Super Premium  
 ‡275 hp with Cruise-O-Matic

PRODUCTS OF

