



FORD



FALCON



FAIRLANE



THUNDERBIRD



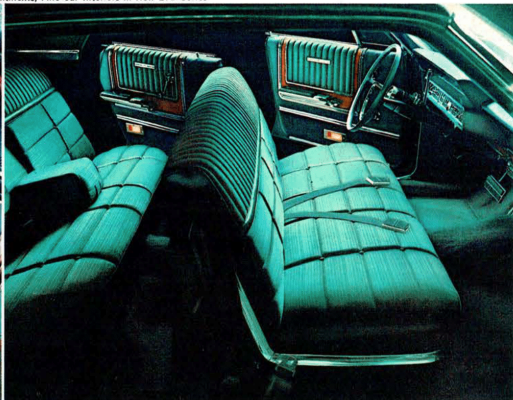
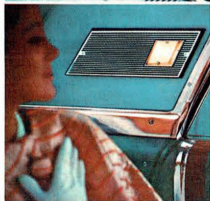
MUSTANG

The Five Different Total Performance Cars!

FORD 1965

MUSTANG • FALCON • FAIRLANE • FORD • THUNDERBIRD

New Ford: Silent-Flo Ventilation*, Rich Appointments, Fine-Car Interiors in New LTD Series



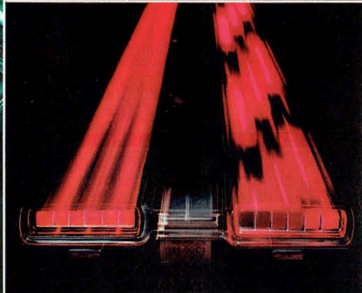
New Mustang: Full-Width Front Seat option



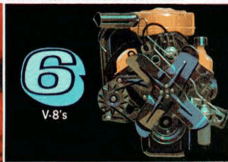
New Mustang: GT Equipment Group option



New Thunderbird: Sequential Turn Signals



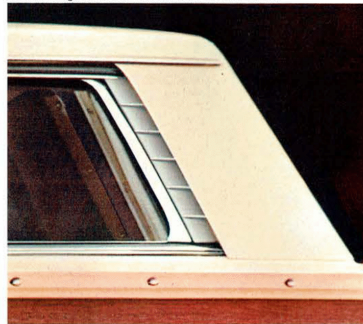
25 New Total Performance Power Teams



New Ford Wagons: Dual Facing Rear Seats†



New Ford Wagons: Built-In Deflectors Air-Clean Rear Window



New Fairlane: More Beauty, More Value



New Falcon: Up to 15% Greater Fuel Economy



There Are 44 Reasons Why This Is The Best Year Yet To Go Ford!

© 1964 Ford Motor Co., Dearborn, Mich.

Forty-four reasons — Ford's 44 new models — each with hundreds of reasons why your '65 car should be one of the new total performance cars! Here are the new car ideas to make headlines all through 1965! □ **Ford** leads off with the elegant new Galaxie 500 LTD's . . . with luxury totally new to Ford's field. A new Ford idea in closed-car, fresh-air

comfort: Silent-Flo Ventilation.* New Ford wagon ideas like built-in deflectors to help air-clean rear windows and dual facing rear seats.† And the quiet of Ford's all-new ride compares with the finest luxury cars (see pg. 4-5). □ There's a new Mustang Fastback 2+2 (an aerodynamic honey!) . . . plus even more new Mustang options. Full-width front seat‡

*4-door hardtops †In Country Squire and Country Sedan ‡In Hardtop, Convertible

with folding center arm rest (above) is one. Others include complete "packages" of options like the Interior Decor and GT Equipment Groups (see pg. 6-7). □ **Fairlane** for '65 comes bigger, bolder, more beautiful . . . with new power, new performance and new features to make it an even better value. **Falcon**, the "savingest" compact, now boasts up to 15%

greater fuel economy with a standard 105-hp Six and optional new 3-speed Cruise-O-Matic! For the whole story, see page 10. □ With **Thunderbird**, unique ideas are the hallmark. New are Sequential Turn Signals, front disc brakes, a limited-edition Special Landau, plus numerous refinements that keep Thunderbird in a class by itself. □ New engines—smoother,

huskier Sixes; quicker, quieter V-8 options. Nine engines (105-425 hp) . . . 5 transmissions . . . 25 total performance power teams in all. New service savings and economy. New convenience, comfort and quality. Reason enough to test-drive total performance '65? See your Ford Dealer now. Find out firsthand . . . this is the best year yet to go Ford!

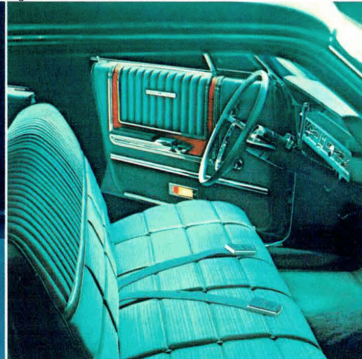
The Galaxie 500 LTD 4-Door Hardtop



The Galaxie 500 LTD 2-Door Hardtop



Elegant new LTD interior



Bigger, easier-loading Ford trunk



The Galaxie 500 4-Door Sedan



Luxurious Galaxie 500/XL Convertible interior



The Galaxie 500/XL Convertible



The Custom 500 4-Door Sedan

'65 FORDS: Solid, Silent, Elegant

From elegant LTD's to value-packed Customs, '65 Fords are the strongest, quickest, quietest Fords ever built! □ The LTD's—two new luxury hardtops—join bucket-seat XL's to head up the '65 line. In LTD's, elegance is standard. Seats are sofa-wide and soft; fabrics are treated with Scotchgard* to resist soil and stains. Appointments rival the most expensive cars. □ Equally luxurious is the new ride all total performance

*TM 3M CO.

Fords share. All-new design makes it new in smoothness, control and quiet. Ford's ride is amazingly quiet. Leading acoustical consultants conducted tests in which 1965 Fords (Galaxie 500 Sedan, XL and LTD Hardtops) with 289-cu. in. V-8's and Cruise-O-Matic Drive rode quieter than a new Rolls-Royce. Test results certified by U.S. Auto Club. A quiet ride is characteristic of superbly built luxury cars. And Rolls-

Royce sets the standard. The test results do not mean that a Ford is suddenly a Rolls-Royce. Substantial differences remain. But the '65 Ford does have a quieter ride. And that you can confirm with a test drive. □ Ford's new 240-cubic-inch Big Six is the biggest 6 for '65! It develops 150 hp, has seven main bearings for smoothness . . . hydraulic valve lifters for quietness. (Options include 4 V-8's up to 425 hp, 3 drives

headed by smooth, 3-speed Cruise-O-Matic.) □ Silent-Flo Ventilation*—fresh air with all windows closed. Glass rear windows in convertibles. An even more spacious (by 11%) trunk. Suspended accelerator pedal. Curved side glass. Battery-saving alternator. Low-profile tires on 15-inch wheels. Twice-a-Year Maintenance (back cover) and complete quality. It all comes alive in a Ford test drive!

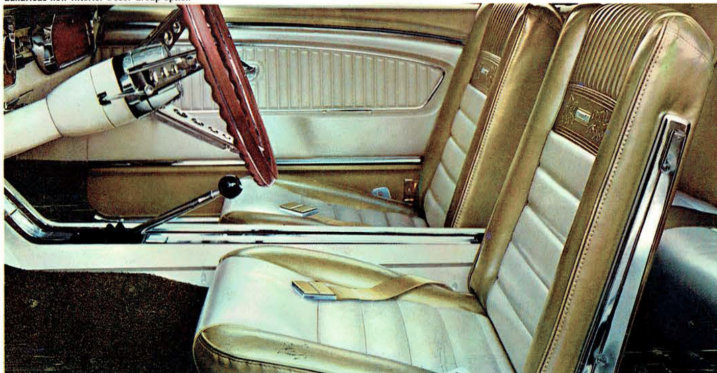
'65 FORD HIGHLIGHTS
17 Models in 6 Series: 5 Sedans, 5 Hardtops, 2 Convertibles, 5 Wagons □ Wheelbase—119" □ Overall Length—210" □ Trunk Luggage Vol. (cu. ft.)—19.1 (Sedans, Hardtops) 18 (Convertibles) □ Std. Engine—200-hp. Challenger V-8 (LTD's, XL's), Std. Engine—120-hp. Big Six (all others) □ Std. Trans.—Cruise-O-Matic (LTD's, XL's) □ Std. Trans.—Synchro-Smooth Drive (fully sync. 3-Spd. Man.—all others) □ Options—4 V-8's (200-425 hp); 3 Trans. (Cruise-O-Matic, 4-Spd. Man., Overdrive)

*4-door hardtops

Mustang Fastback 2+2: imported looks at a low Ford price



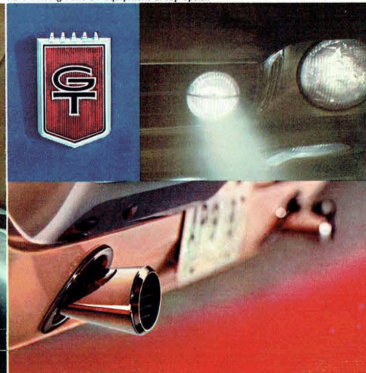
Luxurious new Interior Decor Group option



Fastback's folding rear seat triples luggage room



Pure Driving Fun: GT Equipment Group option



Mustang Hardtop: style and complete versatility



Six all-vinyl trim choices with the look and feel of leather



Mustang Convertible: sporty performance and a low price tag



'65 MUSTANGS: Total Performance Trio

Total performance with total popularity! Everybody loves Mustang—everybody wants a Mustang. It's the most popular new car ever introduced! What makes Mustang such an all-American favorite? Imported sports car flair. Pure driving fun. Built-in Ford economy and a typical low Ford price. □ Whether Hardtop, Convertible or Fastback 2+2, Mustang's low price includes all kinds of luxury equipment as standard.

New 120-hp Six, bucket seats, all-vinyl interior, full carpeting, floor-mounted shift, sports steering wheel, padded dash, courtesy lighting, full wheel covers . . . to name a few off the top. □ More than ever, Mustang is designed to be designed by you. Exciting new options have been added to Mustang's long list of more than 70. The new Interior Decor Group (with nearly a dozen separate items!) introduces a kind

of luxury new even among Mustangs. The new GT Equipment Group (225-hp V-8, handling package, front disc brakes, fog lamps, "straight-through" dual exhaust . . . to name a few) is a very special package for performance fans, available on all three Mustang models. Also new is a full-width front seat* with folding arm rest (shown on page 2). And there are so many more. Rally Pac, 4-speed stick shift, choice of three

V-8's (up to 271 hp). Air conditioner, power convertible top, T-bar Cruise-O-Matic, vinyl roof covering for the hardtop. □ Whether you want a fun car or family car (Mustang's great practicality lets you have the two in one), you owe yourself the fun of a Mustang test drive. In Hardtop, Convertible or Fastback 2+2, that fun begins at your Ford Dealer's.

*In Hardtop, Convertible

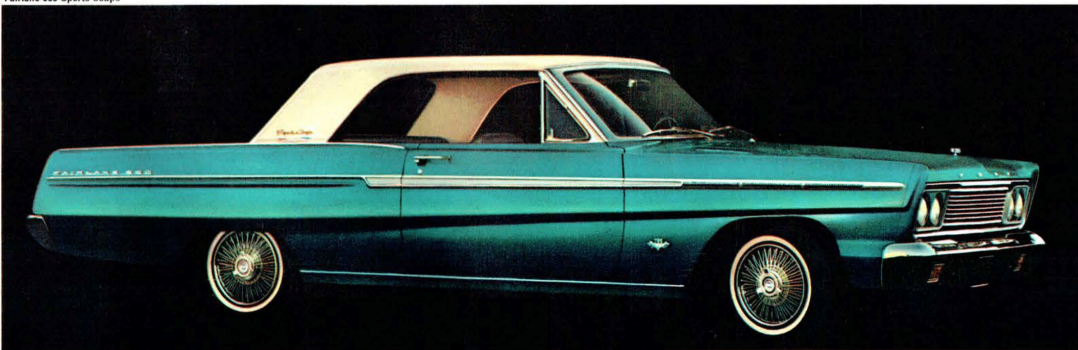
MUSTANG HIGHLIGHTS

3 Models: Hardtop, Convertible, Fastback 2+2 □ Wheelbase—108" □ Overall Length—181.6" □ Trunk Luggage Vol. (cu. ft.)—9 (Hardtop), 7.7 (Convertible), 5 (2+2) □ Std. Engine—120-hp (200 cu. in.) Six □ Std. Trans.—3-Spd. Manual (floor-mounted shift) □ Options—3 Challenger V-8's (200, 225 and 271 hp); 2 Trans. (Cruise-O-Matic, 4-Speed Manual)

Fairlane 500 Hardtop



Fairlane 500 Sports Coupe



'65 FAIRLANES:
*Bigger, Bolder,
More Beauty, More Value*

Drive any new total performance Fairlane and you'll quickly find a great deal more than the styling is new. □ For '65, the Fairlane formula of big-car comfort with nimble handling and luxury at low price includes more of everything that adds up to value. □ A new standard Six . . . 120-hp strong with the smoothness and quality of a 7-main-bearing crankshaft. Steering and braking effort are further reduced—the ride is

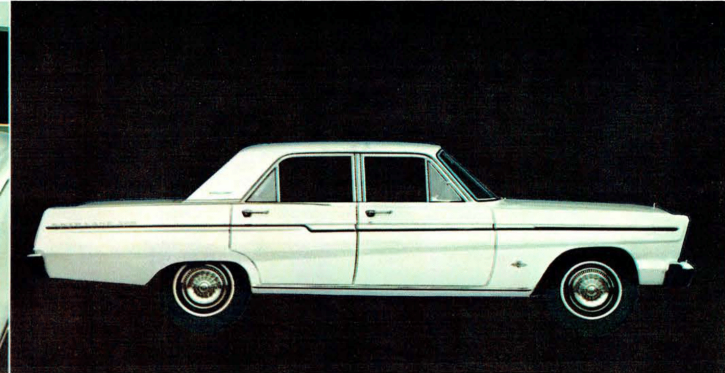
Rich and roomy Fairlane 500 Hardtop interior



Sports Coupe bucket-seat interior



Fairlane 500 4-Door Sedan



Fairlane 2-Door Sedan



smoother and quieter! Trunk space has been increased 19%. □ There's a bigger V-8 (200 hp, one of three V-8 options). Famous 3-speed Cruise-O-Matic is now available with all engines; sporty 4-speed manual and gas-saving Overdrive options are also offered. □ New Fairlanes are just as luxurious inside as out. From bucket-seat Sports Coupe to budget-wise Fairlane 2-Door, upholstery is new,

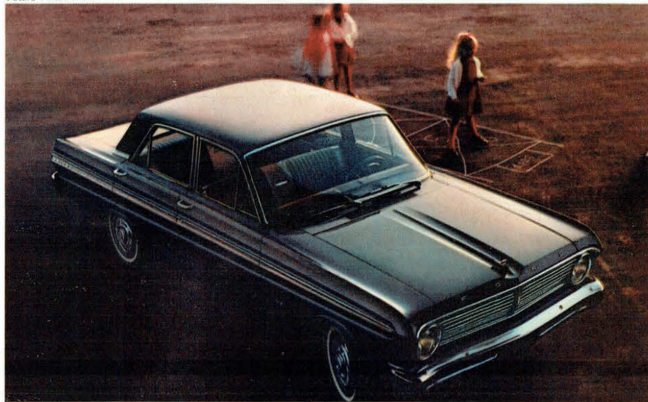
richer and softer. New smaller steering wheel lets the driver slip in and out more easily. □ Standard are smooth-running low-profile tires and automatic chokes on all engines* And, as on all '65 Ford cars, new "Sta-Ful" battery and alternator take their place with the famous Ford service-saving and Twice-a-Year Maintenance features (see back cover). Try the medium-sized car that's different—'65 Fairlane!

*Except 271-hp V-8

'65 FAIRLANE HIGHLIGHTS

8 Models in 2 Series: 4 Sedans, 2 Hardtops, 2 Wagons (see pages 14-15) □ Wheelbase—116" □ Overall Length—198.4" □ Trunk Luggage Vol.—15 cu. ft. □ Std. Engine—120-hp Fairlane Six □ Std. Trans.—3-Spd. Manual □ Options—3 Challenger V-8's (200, 225 and 271 hp); 3 Transmissions (Cruise-O-Matic, 4-Speed Manual, Overdrive)

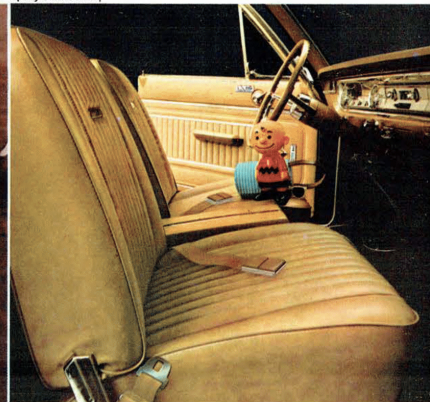
Futura 4-Door Sedan



Futura Hardtop with vinyl roof covering†



Sporty bucket seats†



Futura Convertible



Futura 4-Door interior



Falcon 2-Door Sedan



'65 FALCONS: Up To 15% Greater Fuel Economy

For as great a gas-saver as Falcon has always been, up to 15% more can mean a lot of MPG! Here's how it happens: a new standard 105-hp Six is not only livelier but more efficient. (New valving makes it more "free-breathing.") In addition, optional new 3-speed Cruise-O-Matic uses the new Six's power more efficiently. It starts up more briskly; there's less power loss and more gas saved. □ You'll like driving a total

performance '65 Falcon for the fun as much as the savings. The ride is the plushiest among compacts — quiet, smooth, controlled. Handling is easier than ever. Manual steering effort is further reduced; power steering† takes less wheel turning, is faster, more precise. □ In other '65 Falcon power news: a 120-hp Six and new 200-hp V-8 are options. New 3-speed Cruise-O-Matic is available with all engines, a

[†]Optional

4-speed stick shift, with the V-8. □ New Falcons cover every choice in the compact world—from the Falcon 2-Door with a price tag among the lowest in America, to the Futura Hardtop with bucket seats†, air conditioner†, the works. Whatever your choice, you can count more savings in a new battery-saving alternator, Ford's famous Twice-a-Year Maintenance and service-saving features (see back cover).

'65 FALCON HIGHLIGHTS

13 Models in 3 Series: 4 Sedans, 1 Hardtop, 1 Convertible, 7 Wagons (see pages 14-15) □ Wheelbase—109.5" □ Overall Length—181.6" □ Trunk Luggage Vol. (cu. ft.)—12.2 (Sedans, Hardtop), 9.1 (Convertible) □ Std. Engine—105-hp Falcon Six □ Std. Trans.—3-Speed Manual □ Options—120-hp Fairlane Six, 200-hp Challenger V-8; Cruise-O-Matic, 4-Speed Manual

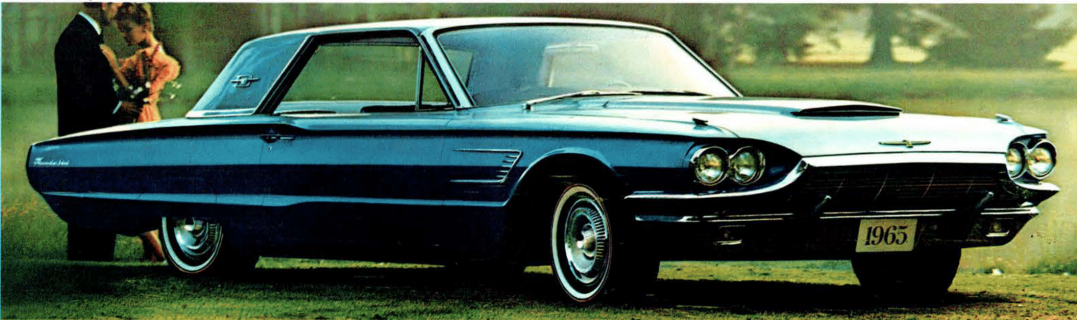
Special Landau interior



Thunderbird Special Landau



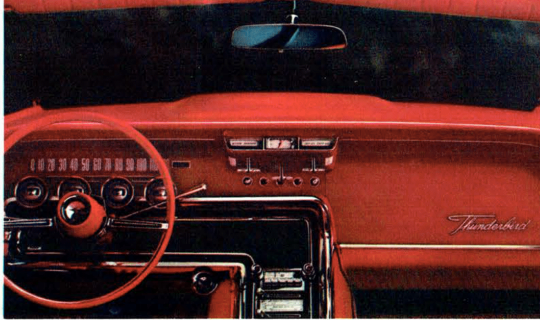
Thunderbird Hardtop



Thunderbird Convertible



Thunderbird cockpit



Thunderbird interior



Thunderbird Landau



The Private World of Thunderbird for 1965

There never was a better time to make the private world of Thunderbird part of your own. ☐ Thunderbird '65 is new in ways other cars will not be for years. Examples: Sequential Turn Signals point out your turn in a rippling flow of light. Silent-Flo Ventilation* lets you enjoy the freshest air in closed-car quiet. There is a new limited-edition Special Landau. Exquisitely fashioned in tones of Ember-Glo and

Parchment, it has interior paneling of simulated burled walnut, other unique ornamentation. Thunderbird has the Swing-Away Wheel that moves aside to help you in or out. And the unique Convertible tucks away its own top without trace. ☐ In Thunderbird's cockpit, aircraft instrumentation places controls fingertip-close. Shell-contour seats in front—uniquely coved rear seat—are comfort supreme. ☐ Out on the road,

pillars fall away in effortless quiet. The power team is flawless: 300-hp Thunderbird Special V-8 and Cruise-O-Matic Drive. New front disc brakes act with increased smoothness, fade-resistance. Power steering, power brakes . . . even the radio is standard. ☐ Sample Thunderbird's private world today. Its unique pleasures are matched only by the pride you can take in making one of motoring's finest investments.

'65 THUNDERBIRD HIGHLIGHTS
 3 Models: Hardtop, Convertible, Landau (plus limited-edition Special Landau) ☐ Wheelbase—113" ☐ Overall Length—205.4" ☐ Trunk Luggage Vol. (cu. ft.)—11.5 (Hardtop, Landau), 6.1 (Convertible) ☐ Standard Equipment—300-hp Thunderbird Special V-8 ☐ Cruise-O-Matic Drive ☐ Power Steering ☐ Power Brakes (disc front wheel brakes) ☐ Swing-Away Steering Wheel ☐ Silent-Flo Ventilation* ☐ Sequential Turn Signals ☐ Shell-Contour Front Seats.

*In Hardtop and Landau

Ford Country Sedan with Dual Facing Rear Seats



Fairlane 500 Wagon



Fairlane 500 Wagon interior



Falcon Squire



Falcon Squire interior



Country Squire interior



Ford Country Squire



Ford's Dual Facing Rear Seats



Falcon Futura 4-Door Wagon



Falcon Deluxe Club Wagon



A Whole New World of WAGONS for 1965!

For '65, America's station wagon specialist offers 14 "champions of inner space." New wagons from Ford come bigger, hand-somer, more versatile, more useful and in greater variety than ever! Which one's for you? Take them from the top. □ Now you can choose from five full-size **Fords**. An all-new, low-priced Ranch Wagon takes its place alongside the equally new Country Sedans and Country Squires. Bigger inside,

4 x 8-ft. plywood panels can lay flat on the load floor. □ Here are all the features of other '65 Fords, including that luxurious ride. Here, too, are "strictly wagon" ideas—built-in air deflectors that help keep the rear window clean; models with dual facing rear seats which provide room for a family of 10! The new quick, smooth Big Six (150 hp) is standard; three V-8 options go to 300 hp. □ **Fairlane** wagons have all-new

looks outside, new rich all-vinyl trims inside. Standard is a thrifty, thrifty new 120-hp Six; two new V-8 options deliver up to 225 hp! A third seat option boosts capacity to eight. □ In compact wagons, the '65 **Falcons** come in seven models—from lowest-priced Falcon 2-Door to smart Falcon Squire to the "take-all-loads" threesome, Falcon Club Wagons. New standard Sixes—up to 120 hp. New options—150-hp Big Six

in Club Wagons, 200-hp V-8 in others. New Extended Body option boosts Station Bus cargo volume 25%! Never were wagons as much fun or as economical as new Falcons! □ New "Sta-Ful" batteries, new battery-saving alternators . . . Ford's famous Twice-a-Year Maintenance and service-saving features. You'll find them all when you test-drive one of the 14 new wagons from Ford.

'65 WAGON HIGHLIGHTS

14 Models in 4 Sizes. Length (wheelbase/overall): Ford 119/210"; Fairlane 116/203"; Falcon 109.5/190"; Club Wagons 90/167.5" (185.5" opt. Bus). Cargo Vol. (cu. ft.): Ford 103* (6-Pass.), 98.9 (dual facing rear seat models); Fairlane 98.6; Falcon 77.9; Club Wagons 194 (242 opt. Bus); Engine HP (std./top opt.): Ford 150/300; Fairlane 120/225; Falcon 105 & 120/200; Club Wagons 105/150.

*Includes 11.7, 7.6 and 6.7 cu. ft. respectively in below floor compartments.

44 New Total Performance Models for '65

Check off your choice here, then see your Ford Dealer for a Total Performance Test Drive!

17 NEW FORDS

Galaxie 500 LTD □ 2-Door Hardtop □ 4-Door Hardtop. **Galaxie 500/XL** □ 2-Door Hardtop □ Convertible. **Galaxie 500** □ 2-Door Hardtop □ 4-Door Hardtop □ Convertible □ 4-Door Sedan. **Custom 500** □ 2-Door Sedan □ 4-Door Sedan. **Custom** □ 2-Door Sedan □ 4-Door Sedan. **Wagons*** □ Ranch Wagon □ Country Sedan □ Country Sedan with Dual Facing Rear Seats □ Country Squire □ Country Squire with Dual Facing Rear Seats.

*6-passenger. Up to 10 passengers in dual facing rear seat models

3 NEW MUSTANGS

□ Hardtop □ Convertible □ Fastback 2+2.

8 NEW FAIRLANES

Fairlane 500 □ 2-Door Sports Coupe □ 2-Door Hardtop □ 2-Door Sedan □ 4-Door Sedan. **Fairlane** □ 2-Door Sedan □ 4-Door Sedan. **Wagons*** □ Fairlane Wagon □ Fairlane 500 Wagon.

*6-passenger. Up to 8 passengers with optional rear-facing third seat

13 NEW FALCONS

Futura □ 2-Door Hardtop □ Convertible □ 2-Door Sedan □ 4-Door Sedan. **Falcon** □ 2-Door Sedan □ 4-Door Sedan. **Wagons*** □ 2-Door Falcon Wagon □ 4-Door Falcon Wagon □ Falcon Futura Wagon □ Falcon Squire Wagon. **Club Wagons†** □ Station Bus □ Club Wagon □ Deluxe Club Wagon.

*6-passenger

†Up to 8 passengers with options: 3-pass. 2nd seat or 3-pass. 2nd and 3rd seats

3 NEW THUNDERBIRDS

□ Hardtop □ Landau (plus limited-edition Special Landau) □ Convertible.

TWICE-A-YEAR MAINTENANCE

The new total performance cars from Ford are designed to go 6,000 miles (or 6 months) between oil changes and minor chassis lubrications; 36,000 miles (or 3 years,* whichever comes first) between major chassis lube. Other '65 service-savers include: 36,000-mile (or 2-year) engine coolant-antifreeze, self-adjusting brakes, long-life Sta-Ful battery, sealed alternator, rust- and corrosion-resistant aluminized muffler and galvanized underbody parts. Every new car built by Ford needs so little service it's just good sense to see that it gets the best—at your Ford Dealer's. His factory-trained mechanics and special tools add up to the greatest service combination for your Ford.

*Except Falcon Club Wagons each 6,000 miles or 6 mos., Thunderbird each 100,000 miles or 3 yrs.

FORD WAGON TRAILER TOWING RECOMMENDATIONS are included, along with much additional helpful information, in the "1965 Ford Car & Truck Recreational Brochure." Ask your Ford Dealer for a copy.

PRICES: Front seat belts, heater and defroster are included as standard equipment on all models. However, heater and/or seat belts may be deleted (except for Thunderbird) on car order if desired at an appropriate price reduction. All power assists, optional equipment and accessories as well as some items illustrated or referred to as options, optional or available are at extra cost. For the price of the Mustang, Falcon, Fairlane, Ford or Thunderbird with the equipment you desire, consult your Ford Dealer.

Comparative information in this folder was obtained from authoritative sources, but is not guaranteed. The specifications contained herein were in effect at the time of approval for printing. Ford Division of Ford Motor Company reserves the right to discontinue models at any time, or change prices, specifications or designs without notice and without incurring obligation.

25 TOTAL PERFORMANCE POWER TEAMS

CAR LINE	ENGINE	HORSE-POWER	DISPL. CU. IN.	COMP. RATIO	CARB. & FUEL	TRANSMISSION OPTIONS				AVAILABLE WITH MODELS (note exceptions)
						CLUB WAGONS	WAGONS	LTD & XL	OTHER MODELS	
MUSTANG	Six (standard)	120	200	9.2	IV Reg.				A*-C-D	All Models
	Challenger V-8	200	289	9.3	2V Reg.				B-C-D	
	Challenger Special V-8	225	289	10.0	4V Prem.				B-C-D	
	Challenger Hi-Perf. V-8	271	289	10.5	4V SP				D	
FALCON	Falcon Six (standard)	105	170	9.1	IV Reg.	B*-C	A*-C		A*-C	Std. all except Futura and Squire Wagons
	Fairlane Six (standard)	120	200	9.2	IV Reg.		A*-C		A-C	Std. Futura, Squire Wagons, opt. others, except Club Wagons
	Big Six	150	240	9.2	IV Reg.	B-C				Club Wagons
	Challenger V-8	200	289	9.3	2V Reg.		B-C		B-C-D	All except Club Wagons
FAIRLANE	Fairlane Six (standard)	120	200	9.2	IV Reg.		A*-C		A*-C	All Models
	Challenger V-8	200	289	9.3	2V Reg.		B-C-E		B-C-E	
	Challenger Special V-8	225	289	10.0	4V Prem.		B-C		B-C-D	
	Challenger Hi-Perf. V-8	271	289	10.5	4V SP				C-D	
FORD	Big Six (standard)	150	240	9.2	IV Reg.		B*-C-E		B*-C-E	Std. all except Gal. 500 LTD's and XL's
	Challenger V-8 (standard)	200	289	9.3	2V Reg.		B-C-E	C*	B-C-E	Std. Gal. 500 LTD's and XL's, opt. others
	Thunderbird V-8	250	352	9.3	4V Reg.		B-C	C	B-C	All Models
	Thunderbird Special V-8	300	390	10.1	4V Prem.		B-C-E	C-D	B-C-D-E	All Models
	Thunderbird Hi-Perf. V-8	425	427	11.1	8V SP			D	D	All except Wagons
T-BIRD	Thunderbird Special V-8 (standard)	300	390	10.1	4V Prem.				C*	All Models

Transmission Key: A—3-Speed Manual (sync. 2nd and 3rd gears) B—Synchro-Smooth Drive (fully sync. 3-spd. manual) C—Cruise-O-Matic Drive (3-speed automatic) D—4-Speed Manual (fully sync.) E—Overdrive *Standard V—Barrel (carb.) SP—Super Premium

PRODUCTS OF  MOTOR COMPANY

Best Year Yet To Go Ford!