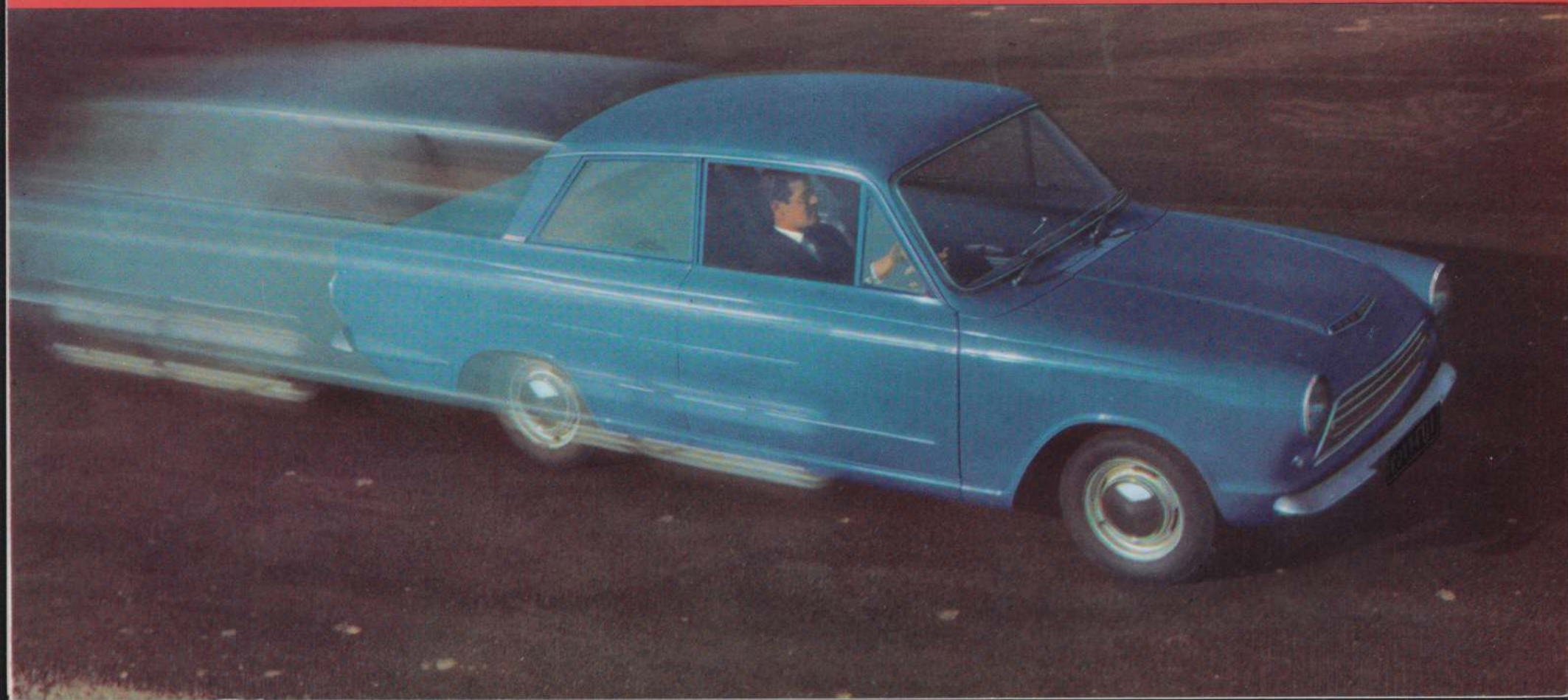


Ford's newest from England!

# CORTINA



# America's best import buy!



Ford engineering advances give you a car that's a whole new concept for similarly priced imports! Here's more room, more power, more style, more car! It's a family size car with a sports car flair. The rally proved 4 cylinder overhead valve engine zips you along at express highway speeds. The 4-speed transmission, either floor or steering column shift, is fully synchronized and a delight to handle. Driving is more fun than ever with Cortina! And, remember, Cortina is manufactured by Ford in England and backed by a 12-month, 12,000 mile warranty.\* No wonder Cortina is without a doubt your best import buy! It's a Ford product!



## *The family-size import with the Ford difference!*

Most imports in Cortina's price class are about the same size. But the Ford difference in Cortina sets it apart from them all. Ford engineering takes out the *little*—puts in the *big* to give you full family comfort—a design triumph you appreciate

mile after mile, year after year. You see the Ford difference in Cortina styling, too. Refined yet with a crisp look that suggests the nimble performance Cortina delivers on low cost regular with its rally proved engine. To see Cortina is to love it—to drive Cortina is to own it! Make your proof drive today!



\*During the first 12,000 miles or twelve months of operation, whichever comes first, your dealer will replace, free of charge, parts that may fail as a result of defects of workmanship or material, except for tires and matters of ordinary maintenance such as ignition points, spark plugs and wiper blades.



**CORTINA** best of the imports  
because best of all it's a



**CORTINA** is at home wherever it goes...and it goes everywhere!



#### Solid comfort for five

Unlike other imports in its price class Cortina is a family size car. Five six footers travel comfortably with more leg room, more hip room. And they ride on deeply padded foam cushioned seats! To match this extra riding comfort, Cortina also gives far greater visibility all around. You can see what's ahead and what's coming — without strain. You'll like the way Cortina's longer wheelbase gives you a far bigger car ride, too! (*U.S. models left-hand drive, of course.*)

#### ...and all their luggage

Cortina's trunk space is huge. No need to skimp when you pack for a trip. Golf clubs, suit cases, tackle — all fit handily in Cortina's luggage locker. And, because the spare is side mounted you don't have to unload should you ever have to change tires. Incidentally, Cortina also gives you extra storage space for small items in a car wide parcel tray under the dash *plus* a spacious glove box.



## 25 reasons why **CORTINA**

FORD's *newest* from England  
is America's *best* import buy!

### COMFORT

1. Roomiest interior in its class.
2. Greatest visibility—all around.
3. Foam padded seats, arm rests, dash visors.
4. Fresh air heating and summer ventilation.
5. Sound conditioned roof, doors and body panels of unit construction.
6. Hydra-coil front suspension.
7. Silent shut safety door locks.
8. Two mufflers.

### CONVENIENCE

9. Shorter turning radius.
10. Electric wipers.
11. Glove box and full width parcel tray.
12. All vinyl color harmonized interior.
13. Deep deck luggage locker—golf bag wide.
14. Standard U.S. size nuts and bolts.

### SPECIFICATION

#### ENGINE

Bore 3.1875 in.  
Stroke 2.29 in.  
Compression ratio 8.7:1  
Maximum gross  
B.H.P. 53.5 at 5,000 r.p.m.

#### ELECTRICAL SYSTEM

Battery, Heady-Duty—12 volt

#### TYRES

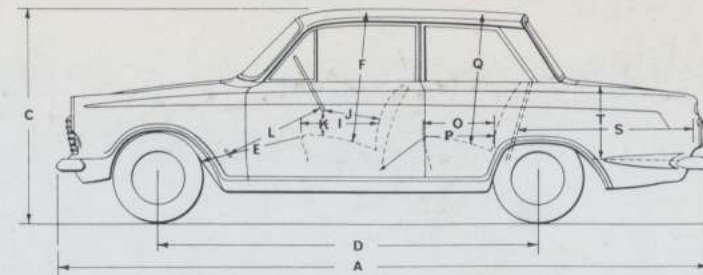
5.20 x 13. 4 ply

### PERFORMANCE

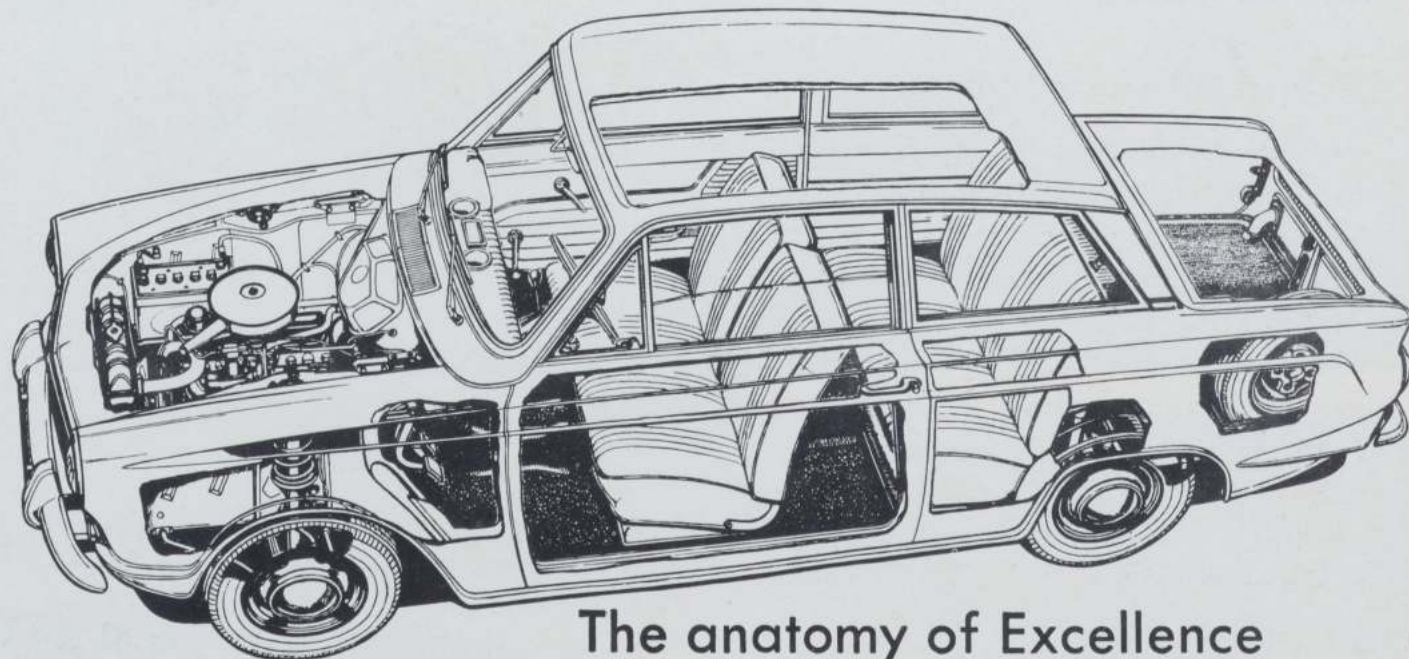
15. 4 cylinder O.H.V. rally bred engine.
16. Sports car handling.
17. Dual grip brakes.
18. Fully synchronized 4-speed gearbox.

### ECONOMY WITH QUALITY

19. High mileage on low cost regular.
20. 6000 miles between oil changes.
21. Super life heavy duty 12 volt battery.
22. Hand rubbed lustre life baked enamel finish.
23. Rust proofed heavy gauge steel.
24. Stainless steel British quality external trim.
25. Hydraulically actuated clutch.



A.	Overall length	168.31"
C.	Overall height laden	54.60"
D.	Wheelbase	98.0"
E.	Effective leg room, front	44.8"
F.	Effective head room, front	37.5"
I.	Depth of front seat	19.0"
L.	Steering wheel to pedal	26.17"
O.	Depth of rear seat	17.45"
P.	Effective rear leg room	38.25"
Q.	Effective head room, rear	37.8"
S.	Length of luggage trunk	45.5"
T.	Depth of luggage trunk	18.4"



The anatomy of Excellence

