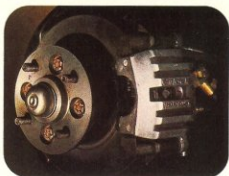


**Ford Cortina.
Drive it...it makes
beautiful sense.**



Illustrated above: Ford Cortina Ghia Sedan.



Interior shown with optional 3-speed T-bar automatic transmission (available at extra cost)



FORD CORTINA L

Everyone these days has a keen sense for value. And one sure way to bring it right out into the open is to get behind the wheel of a Cortina L. Here is neatly tailored simplicity in a size for today's out-and-about living. Beautifully compact on the outside for tight responsive manoeuvring. Yet spacious and comfortably appointed inside, with a list of equipment that may be considered luxurious by some, but it simply makes beautiful sense. Particularly when you consider Cortina L's price-tag.

FORD CORTINA L STANDARD EQUIPMENT HIGHLIGHTS

- ★ Steel, slotted road wheels
- ★ BR78S 13 steel belt radial ply tyres
- ★ Reclining front bucket seats with perforated vinyl upholstery

- ★ Inertia reel front seat belts
- ★ Loop pile carpet
- ★ Directional, power-booster ventilation
- ★ Styled right hand exterior rear-view mirror
- ★ Quartz halogen headlights
- ★ Deep-section bumper bars with protective rubber end caps
- ★ Interior courtesy lights operated by front doors
- ★ 3-speed heater/demister
- ★ Lockable glove box
- ★ Cigarette lighter (illuminated)
- ★ Prismatic day/night interior rear-view mirror
- ★ Black, non-glare windscreen wipers
- ★ Front fender side-marker lights
- ★ Steering column control stalks for
 - (i) Turn/lane change signals, high/low beam, headlight flasher and horn button
 - (ii) Windscreen wash/wipe



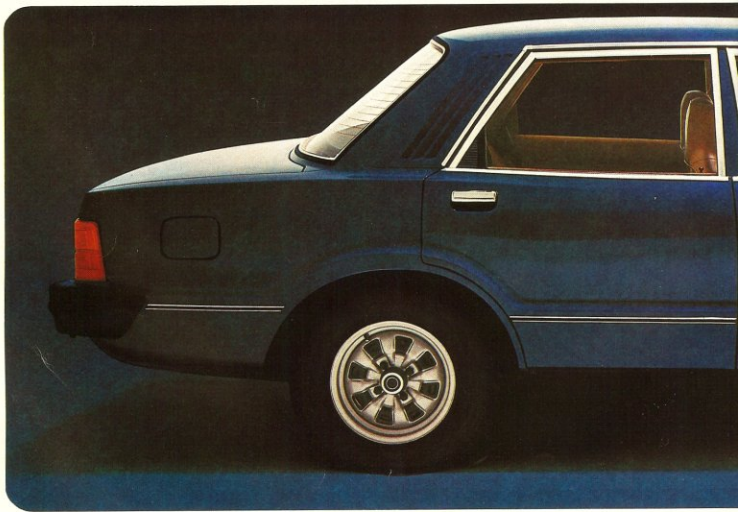
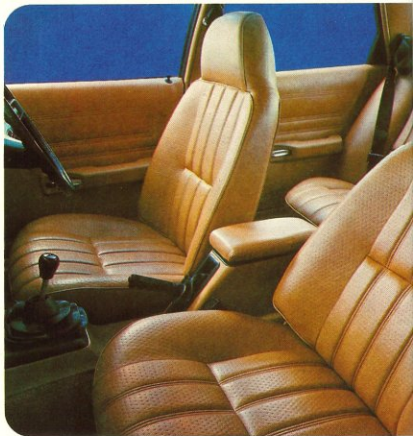
FORD CORTINA GL

A car that's beautiful to look at and to drive is all very well, but there's more to motoring than looking good and feeling good behind the wheel.

A very big consideration with the Cortina GL is its comprehensive feature level.

It packs as much room, comfort, riding-quality and performance into its clean, uncluttered lines as some cars costing considerably more. Handles and tracks beautifully. And has a long list of standard equipment.

Therefore, it lets you set your standards high—without you having to pay a high price.





FORD CORTINA GL STANDARD EQUIPMENT HIGHLIGHTS

As for Cortina L but with these upgraded features:

- ★ Steel sports-type wheels
 - ★ Interior courtesy light operated by front and rear doors
- and with these additional features which are not standard equipment on Cortina L:
- ★ Front centre console
 - ★ Electric rear window demister
 - ★ AM push-button radio
 - ★ Electric clock
 - ★ Outboard passenger grab handles
 - ★ Rear seat folding centre armrest
 - ★ Bodyside protection mouldings



FORD CORTINA L and GL WAGONS

Versatile, strong and spacious...that sums up the Cortina Wagons. Whichever model you choose, L or GL, use it as a freedom machine, a work-horse, a shopping basket, for delivering the kids or whatever. It offers you a lot of loadspace. A rear opening that's wide and deep, and a tailgate that swings up in one easy action.

It offers you the same manoeuvrability of the Cortina sedans, too. The same tight turning circle. The same rack-and-pinion steering, power assisted front disc brakes and wide track. Combine those attributes with its list of standard appointments and you begin to get the idea it's in a class of its own. And you're right.

FORD CORTINA L WAGON STANDARD EQUIPMENT HIGHLIGHTS

- ★ Steel, slotted road wheels
- ★ Power assisted front disc brakes
- ★ BR78S 13 steel belt radial ply tyres
- ★ Reclining front bucket seats with perforated vinyl upholstery
- ★ Loop pile carpet - front and rear passenger compartments
- ★ Directional, power-boosted ventilation
- ★ Styled right hand exterior rear-view mirror

- ★ Quartz halogen headlights
- ★ Deep-section bumper bars with protective rubber end caps
- ★ Interior courtesy light operated by front doors
- ★ 3-speed heater/demister
- ★ Lockable glove box
- ★ Cigarette lighter (illuminated)
- ★ Prismatic day/night interior rear-view mirror
- ★ Black, non-glare windscreen wipers
- ★ Front fender side-marker lights
- ★ Steering column control stalks for
 - (i) Turn/lane change signals, high/low beam, headlight flasher and horn button
 - (ii) Windscreen wash/wipe

FORD CORTINA GL WAGON STANDARD EQUIPMENT HIGHLIGHTS

As for Cortina L Wagon but with these upgraded features:

- ★ Styled sports-type road wheels
- ★ Carpet in load area
- And with these additional features which are not standard equipment on Cortina L Wagon:
- ★ Bodyside protection mouldings
- ★ Rear window wash/wipe
- ★ Front centre console
- ★ AM push-button radio
- ★ Electric clock
- ★ Outboard passenger grab handles front and rear
- ★ Interior courtesy light operated by front and rear doors
- ★ Electric rear window demister



Illustrated below: Ford Cortina GL interior with optional AM/FM Multiple push-button radio and stereo cassette tape player (available at extra cost).



Illustrated above: Ford Cortina GL Wagon with optional GL Luxury Pack (available at extra cost).

FORD CORTINA GHIA

As good as it looks

The Cortina Ghia is the top of the line Cortina. Marked by distinctive exterior styling touches, such as vinyl roof and European style full alloy, wide-rim wheels, it also features a luxurious interior. Tastefully upholstered with rich cord and cashmere knit fabrics, the Ghia gives you deeply-cushioned, body-contoured seating, thick, cut pile carpet and extensive sound-insulation. The ride is smooth—and with the added grip of steel belt radial ply tyres. Order it as a 'four' or a 'six' with your choice of console-mounted 4-speed manual floor shift as standard, or optional 3-speed T-bar automatic (available at extra cost).

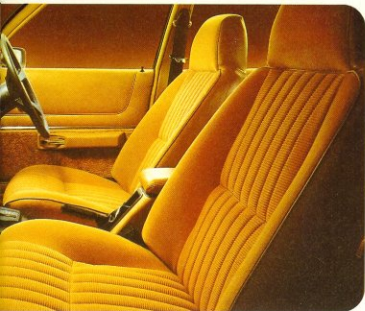
FORD CORTINA GHIA STANDARD EQUIPMENT HIGHLIGHTS

As for Cortina GL but with these upgraded features:

★ 4-spoke 'soft-feel' steering wheel

- ★ Cut pile carpet
- ★ Carpeted kick pads on doors
- ★ Cord and cashmere knit cloth seat upholstery
- ★ Intermittent windscreen wipers
- ★ Styled right hand remote control exterior rear-view mirror
- ★ Rear outboard inertia reel seat belts
- ★ European style full-alloy road wheels
- And with these additional features which are not standard on Cortina GL:
- ★ Vinyl roof
- ★ Tinted-band, laminated windscreen
- ★ Tinted side and rear glass
- ★ Tachometer, oil gauge and trip meter
- ★ Styled left hand exterior rear-view mirror
- ★ Map pockets in rear of front seats
- ★ Deep-section bodyside protection mouldings
- ★ Bumper rub-strips and overriders
- ★ Carpeted floor in luggage compartment
- ★ Vanity mirror in passenger side sun visor





Interior shown with optional 3-speed T-bar automatic transmission (available at extra cost).





FORD CORTINA GS RALLY PACK OPTION

Available at extra cost on L and GL models

The GS Rally Pack is designed to allow you to drive your own Grand Sport touring car...to make your Cortina into a sporty-looking, sports handling machine.

All you do is pick your model...Cortina L or GL... 'six' or 'four'... sedan or wagon. Then add the GS Rally Pack and exciting things happen.

Along the side, bold bodyside tape stripes. Black paint treatment at the front and rear, and around the windscreen and rear window. Black finish bumper bars with protective rubber overriders. "Volante" sports alloy road wheels.

Up front there are twin, long-range halogen driving lights, also black finish to merge in with the grille.

Inside, there's the European 4-spoke 'soft-feel' steering wheel (shown below) and comprehensive instrumentation, including tachometer, trip meter and oil gauge.

At your finger tips, there's the control stalk for intermittent windscreen wipers and washer. And, in sedans, a heavy duty sports handling suspension with increased diameter anti-roll bars and performance-tuned shock absorber valving.

Even the range of colours available with the GS Rally Pack is designed to make you feel a little special. They're

limited to the bolder, more vibrant colours so that your 'Cortina GS' will be a reflection of the way you are.

OTHER CORTINA OPTIONS INCLUDE: Integrated air conditioning lets you travel in climate-controlled comfort throughout the year. Dehumidifies the air, too. Available on all Cortina models.

GL Comfort/Convenience Pack available with the GL Sedan. Consists of styled right hand remote control exterior rear-view mirror, left hand exterior rear-view mirror, rear outboard inertia reel seat belts and "Houndstooth" cloth seat upholstery.

GL Luxury Pack available with GL sedan and Wagon. For the sedan it consists of all GL 'Comfort/Convenience Pack' items above, plus: Stereo cassette tape player, long-range driving lights, front and rear bumper overriders. For the GL wagon, it consists of styled right hand remote control exterior rear-view mirror, left hand exterior rear-view mirror, stereo cassette tape player, long-range driving lights, front and rear bumper overriders and chrome roof rack.

GS instrumentation and steering wheel provides comprehensive instrumentation including tachometer, trip meter and oil pressure gauge plus the 4-spoke 'soft-feel' steering wheel.

Power steering reduces steering effort, for ease-of-parking. Variable ratio steering geometry gives good response and requires only 3.2 turns lock-to-lock. (Available with 6-cylinder models only.)



Illustrated below: Ford Cortina GL '4' interior with optional GS Rally Pack and stereo cassette tape player (available at extra cost).



Ford Cortina L, GL and Ghia Options and Specifications

(Options are at extra cost)

CONVENIENCE EQUIPMENT	Cortina L Sedan	Cortina L Wagon	Cortina GL Sedan	Cortina GL Wagon	Cortina Ghia
Integrated air-conditioning	(a) OPT	OPT	OPT	OPT	OPT
AM push-button radio	OPT	OPT	STD	STD	STD
AM/FM Multiplex push-button radio	OPT	OPT	OPT	OPT	OPT
Stereo cassette tape player	NA	NA	OPT	OPT	OPT
Sunroof	OPT	NA	OPT	NA	OPT
GL Comfort/Convenience Pack	(b) NA	NA	OPT	NA	NA
GL Luxury Pack	(c) NA	NA	OPT	OPT	NA
Ghia Prestige Pack	(d) NA	NA	NA	NA	OPT
Leather seat facings	(e) NA	NA	NA	NA	OPT
Styled left hand exterior rear-view mirror	OPT	OPT	OPT	OPT	STD
Body-side protection mouldings	(f) OPT	OPT	STD	STD	NA
Bumper rub strips and overriders	(g) OPT	OPT	OPT	OPT	STD
Class I Towing Pack	(h) OPT	OPT	OPT	OPT	OPT
SPORTS EQUIPMENT					
GS Rally Pack	(i) OPT	OPT	OPT	OPT	NA
GS instrumentation and steering wheel	(j) OPT	OPT	OPT	OPT	STD
Tinted-band, laminated windscreen	OPT	OPT	OPT	OPT	STD
Long-range driving lights	(k) OPT	OPT	OPT	OPT	OPT
"Volante" sports alloy road wheels (available only as part of GS Rally Pack)	OPT	OPT	OPT	OPT	NA

POWER EQUIPMENT	Cortina L Sedan	Cortina L Wagon	Cortina GL Sedan	Cortina GL Wagon	Cortina Ghia
Power steering	(l) OPT	OPT	OPT	OPT	OPT
APPEARANCE EQUIPMENT					
Vinyl roof	OPT	NA	OPT	NA	STD
Metallic paint	(m) OPT	OPT	OPT	OPT	NCO

ENGINE AND TRANSMISSION COMBINATIONS	Cortina L Sedan	Cortina L Wagon	Cortina GL Sedan	Cortina GL Wagon	Cortina Ghia
FOUR-CYLINDER MODELS					
2 litre crossflow 4-cylinder with:					
4-speed manual floor shift	STD	STD	STD	STD	STD
3-speed T-bar automatic	OPT	OPT	OPT	OPT	OPT
SIX-CYLINDER MODELS					
3.3 litre crossflow 6-cylinder with:					
3-speed manual floor shift	STD	STD	STD	STD	NA
3-speed T-bar automatic	OPT	OPT	OPT	OPT	NA
4.1 litre crossflow 6-cylinder with:					
4-speed manual floor shift	OPT	OPT	OPT	OPT	STD
3-speed T-bar automatic	OPT	OPT	OPT	OPT	STD

TYRE AVAILABILITY	Cortina L Sedan	Cortina L Wagon	Cortina GL Sedan	Cortina GL Wagon	Cortina Ghia
BR 78S 13 steel belt radial ply tyres	STD	STD	STD	STD	STD
BR 70H 13 steel belt radial ply tyres	OPT	OPT	OPT	OPT	OPT

DIMENSIONS	Sedans	Wagons	
Overall length—without overriders	4376 mm (172.3")	4493 mm (176.9")	
—with overriders	4433 mm (174.5")	4544 mm (178.9")	
Overall width	1699 mm (66.9")	1699 mm (66.9")	
Overall height	1333 mm (52.5")	1342 mm (52.8")	
Wheelbase	2578 mm (101.5")	2578 mm (101.5")	
Track—front and rear	1426 mm (56.1")	1426 mm (56.1")	
Fuel tank capacity	55 litres (12.1 gals)	55 litres (12.1 gals)	
Turning circle—curb	10.4 m (34 ft.)	10.4 m (34 ft.)	
Luggage capacity—maximum	0.33 m ³ (11.8 cu. ft.)	—	
Wagon load capacity—to rear seat	—	0.96 m ³ (34 cu. ft.)	
—to front seat (with rear seat folded down)	—	1.81 m ³ (64 cu. ft.)	
ENGINE SPECIFICATIONS	2 litre 4-cyl.	3.3 litre 6-cyl.	4.1 litre 6-cyl.
Engine displacement(cc)	1998	3280	4100
Bore(mm)	90.8	93.5	93.5
Stroke(mm)	76.9	79.1	99.3
Compression ratio(to 1)	9.2	7.9	9.0

Footnotes to chart on left:

- Air conditioning includes tinted side and rear glass as standard. Tinted rear liftgate window is not available on Cortina L Wagon. Air conditioning is standard with Ghia Prestige Pack. Tinted side and rear glass is not included as part of a Dealer-fitted air conditioning package.
- GL Comfort/Convenience Pack is available on GL Sedan only. Consists of styled right hand remote control exterior rear view mirror, styled left hand exterior rear view mirror, rear seat inertia reel seat belts and "Houndstooth" cloth trim seat facings.
- GL Luxury Pack is available on GL Sedan and Wagon only. For the Sedan it consists of all GL Comfort/Convenience Pack items above, plus: stereo cassette tape player, long-range driving lights, front and rear bumper overriders and vinyl roof. For the GL Wagon it consists of styled right hand remote control exterior rear view mirror, styled left hand exterior rear view mirror, stereo cassette tape player, long-range driving lights, front and rear bumper overriders and chrome roof rack.
- The Ghia Prestige Pack consists of leather seat facings, stereo cassette tape player, integrated air conditioning and power steering. Available only with 6-cylinder engines.
- Leather seat facings are standard with Ghia Prestige Pack.
- Body-side protection mouldings are not available with GS Rally Pack. (Deep section mouldings are standard on Cortina Ghia.)
- Bumper rub strips and overriders are not available with GS Rally Pack. GL Luxury Pack or long-range driving lights options.
- Class I Towing Pack comprises tow bar, gooseneck, wiring, uprated flasher unit and, on sedans only, heavy duty sports handling suspension. Towing capacity of up to 907 kg (2000 lbs).
- GS Rally Pack comprises comprehensive instrumentation, 4-spoke 'soft feel' steering wheel, intermittent windscreen wipers, body-side tape stripes, black finish driving lights, bumper overriders, black paint treatment, "Volante" sports alloy road wheels and sports handling suspension (sedans only).
- This option comprises comprehensive instrumentation including tachometer, trip meter and oil pressure gauge plus the 4-spoke 'soft-feel' steering wheel.
- Long-range driving lights are standard with GL Luxury Pack. Front and rear bumper overriders are standard with this option.
- Power steering available only with 6-cylinder engines.
- Consult the Ford Colour Selector or your Ford Dealer to determine which colours are metallic.

Codes to chart on left:

STD means standard equipment.
OPT means optional at extra cost.
NA means not available on that model.
NCO means no cost option.



Always discuss your intended purchase carefully with your Ford Dealer before placing your order.

Please note: All measurements, dimensions and capacities referred to above are approximate only.