



# fastback

look inside at the new Ford

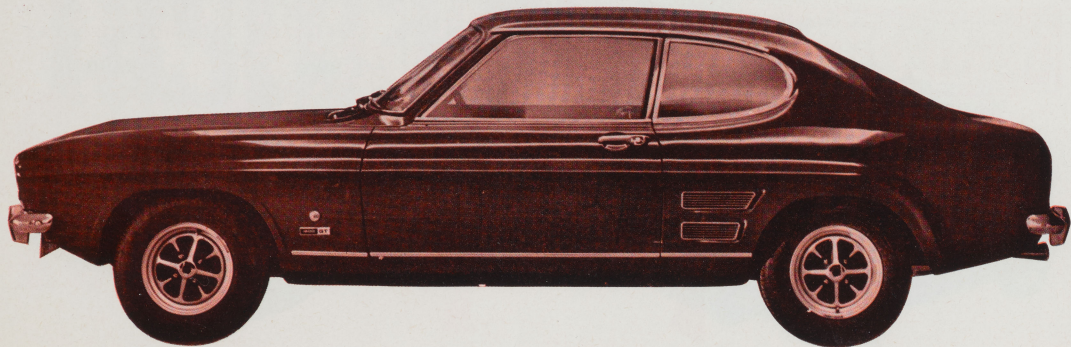
# revolution

New Ford Capri is certainly something to shout about. And own.

It marks the beginning of a fastback revolution.

Now you and your family can enjoy the excitement of styling and performance geared to the 1970's. The Capri is a sensation you will want to experience. Make it soon!

Now take a deep breath and look inside.



**For Your Refreshment—Italian Style . . .**

*Cocktails by Martini - Wines by Belloni  
Cheeses by Galbani - Chocolates by Ferrero  
Holidays Competition  
Fly to Capri with Alitalia*

---

**ENTER THE ALITALIA HOLIDAY COMPETITION—ASK FOR DETAILS**

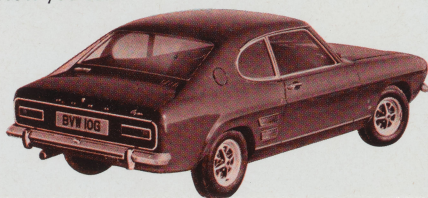


# fastback ford capri

revolution with the completely new -

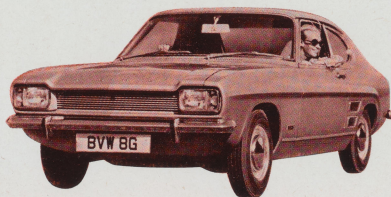
## ON SHOW at - Victory Motors

Capri is a completely new addition to the Ford range.  
Capri is in a class of its own. Capri is unique. Sleek, fastback styling, sports car handling, yet plenty of room for 4 adult-sized adults. Just one look will tell you it's the car you always promised yourself but could never afford. Now you can.



### COMFORT

Deep carpets, armrests and luxurious vinyl seating is fitted on all models. The Custom Plan allows you to choose, if you wish, an even greater degree of luxury. There's a choice of six different interior colour schemes. And, of course, Ford's Aeroflow Heating and Ventilation system.



# fastback features

to cause a revolution

### FORD CAPRI CUSTOM PLAN

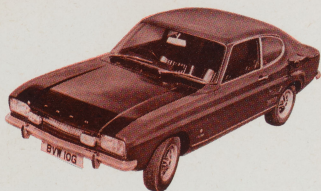
A revolutionary new idea that allows you to buy a Capri that precisely fits your requirements for performance, luxury and appearance. There are also five different engine options to choose from: 1300, 1300GT, 1600, 1600GT and 2000GT.

### NO NEED TO WORRY ABOUT LUGGAGE

The size of the boot is 12 cubic feet which is bigger than quite a few well-known family runabouts.

### DRIVING CAPRI

The driving position is low and relaxed. Pretty much the way a Grand Prix driver sits. The remote sports gear shift is one of the lightest and fastest in the world. All dials and switches are grouped directly in front of the driver. And there are disc brakes on the front wheels. (Servo-assisted on the 1600GT and 2000GT models).



# open house

#### DATE

FROM 5 P.M. TUES  
4th FEB to SAT 15th FEB

#### TIME

9 A.M. to 9 P.M.  
DAILY

#### REFRESHMENTS

ITALIAN  
STYLE

## VICTORY FORD

A MEMBER OF THE BRISTOL STREET GROUP

**MASONS HILL, BROMLEY, KENT** Telephone: 01 460 9101  
Sevenoaks Road, Green-St-Green, Orpington, Kent Telephone: Farnborough (Kent) 55551

# Capri: the car you always promised yourself

Never before has there been a car like Capri.

Never before such a wide choice of engine sizes and such a wide range of optional equipment.

Never before have you been able to order a car tailor-made to suit your individual requirements and your pocket.