



**FORD LTD**



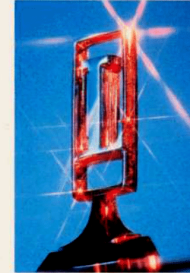
## ERRATA

### LTD CATALOGUE

SUBSEQUENT TO THE PRINTING OF THIS BROCHURE, THE PAINT, TRIM AND VINYL ROOF COLOURS AVAILABLE ON LTD HAVE BEEN LIMITED TO A SPECIALLY SELECTED RANGE DESIGNED TO ENHANCE THE PRESTIGE AND POSITION OF LTD AS AUSTRALIA'S LUXURY LIMOUSINE. YOUR FORD DEALER WILL BE ABLE TO ADVISE YOU ON THE SELECTED RANGE OF COLOURS NOW AVAILABLE.

ALSO PLEASE NOTE THAT LTD STANDARD EQUIPMENT INCLUDES AN AM MONO RADIO NOT STEREO RADIO AS INDICATED IN THE "LTD COMFORT AND CONVENIENCE" SECTION OF THIS CATALOGUE. AN AM-FM STEREO RADIO IS AVAILABLE AS AN OPTION AT EXTRA COST.

**Australia's  
luxury  
limousine**



## Australia's luxury limousine

The new Ford LTD has been conceived, designed and engineered as one of Australia's most distinguished luxury sedans. Of all prestige motor cars, it is one of the largest and most spacious on the Australian road. Its distinctive styling is designed to set you apart. It is so smooth and quiet, with such exhilarating performance and remarkable ease of handling for a car its size, that you will discover an unusually high degree of motoring satisfaction. And, with its extensive list of personal appointments included in the price you pay, you will be driving a new standard of value among luxury cars. You are invited to experience the Ford LTD for yourself. The way it feels to take the wheel, turn the key, and leave the ordinary world behind.







## LTD

### comfort and convenience

The new LTD has a wide range of appointments to add to your personal convenience and enjoyment.

The instrument panel places the most-often-read dials closest to the driver's line of vision, and incorporates an elegant full-width wood-finish applique bounded by a padded crash pad, and a knee pad running the full length of the panel.

The steering wheel features a 'soft-feel' rim — a significant attribute in terms of ease-of-grip for both city and long-distance driving.

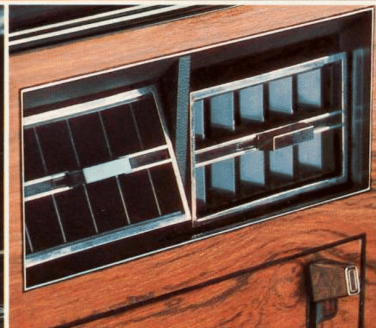
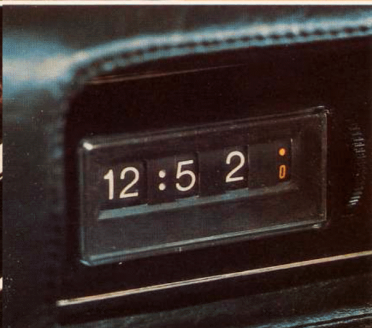
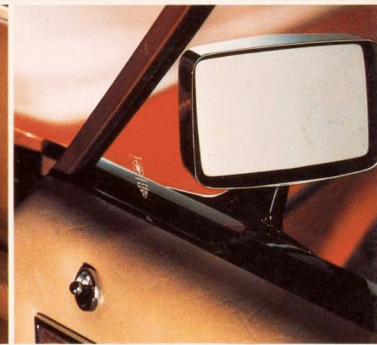
Air-conditioning is, of course, standard and features a large capacity fan and evaporative system. To further increase climate control, there is a separate ventilation system with extraction of cabin air effected by extractors in the rear pillars.

Positioned between the front seats is a padded console incorporating a large storage compartment. Mounted at the rear of the console are separate ducts for air-conditioning the rear compartment.

LTD's other major convenience items include: A new intermittent-action windscreen wipe system, with 'continuous-flow' wash system. Power operated windows, with a master control on the driver's door. Digital clock. Foot-operated park brake. Long range stereo radio with power antenna. Map reading light above the glove compartment. Remote-control exterior mirror for both driver and passenger. Electrically heated rear-window demister. Tinted glass side and rear. A graduated-tint banded and laminated windscreen.

The LTD luggage compartment, one of the largest in the luxury-car field, has 17.5 cubic feet (.49 cubic metres) of usable space, is carpeted to help protect your luggage, and features a remote-control deck-lid release which is located next to the driver's seat.







# LTD

## luxury performance safety

Overleaf you see the sumptuousness of LTD's new, luxury interior. When you enter the passenger compartment, the first thing you will notice is the richness . . . the fine quality leather upholsteries and trim . . . the seating, both front and rear, which is designed with your personal comfort in mind.

The contoured front seats are individually adjustable and reclining so that you, and your front seat passenger, may select your own seating positions for relaxed travelling — particularly on long distances. Also, as you adjust a seat forward, it automatically moves higher, to provide a better view of the road ahead.

In the rear compartment the seating is also contoured, and there is so much room that rear-seat passengers can relax back and cross their legs at leisure.

The LTD has other attributes, too, for your driving and riding comfort. It is particularly quiet, even at highway speed limits. It is exceptionally smooth in its ride. Always noted for responsive power, the 5.8 litre V8 engine now offers new, "Carter" 4-barrel carburettion which contributes to acceleration, particularly at passing speeds, and is emissionised to conform to the new Exhaust Emission Control Standards.

Safety has not been compromised for the sake of performance and comfort. Braking efficiency is even further improved by the adoption of a larger capacity booster to LTD's four-wheel power disc braking system. FR78 X 14 Steel-belt radials are now fitted as standard. For night driving, you have one of the most powerful headlamp systems on any car . . . 18 cm (7 inch) quartz halogen headlamps plus 14.5 cm (5¾ inch) quartz halogen long range driving lights . . . both assisted by independent relays to ensure that a consistently high voltage is always maintained. All-round visibility is excellent, with a deep rear window, and raised fender and quarter panel lines, which allow you to see the extremities of the car.







## LTD options

The LTD includes virtually every luxury as standard equipment, therefore there are only a few optional items available at extra cost. These are detailed below, and overleaf.

### 1. "Silver Monarch" Luxury Group

This comprises "Stardust" Silver exterior paint with a specially imported "Normandy Grain" silver vinyl roof and distinctive "Cranberry" Red crushed velour cloth seat and door trim, together with white side-wall tyres.

### 2. Special Metallic Colour/Finish

A high-metallic acrylic enamel finish achieved by using large, uniform-aluminium flakes in the paint and subjecting the finish to time-consuming cut-and-polish operations. Available in Regency Blue, Regency Green, Regency Lime and Regency Bronze.

### 3. Stereo Cassette Tape Player

Located separately from the radio, features contemporary slide controls for tone, volume and balance with push-button program track change and tape ejection.

### 4. FM/AM Multiplex Radio

Optional in place of the standard AM radio. Includes stereo receiver, push buttons for 2 FM and 3 AM stations, four speakers with side-to-side and front-to-rear balance controls.

### 5. Touring Suspension

Developed specifically to give you more precise handling and road-holding for long-distance touring, it features heavy-duty shock absorbers with up-rated fade-resistance, and slightly increased ride height.

### 6. Long Range Fuel Tank

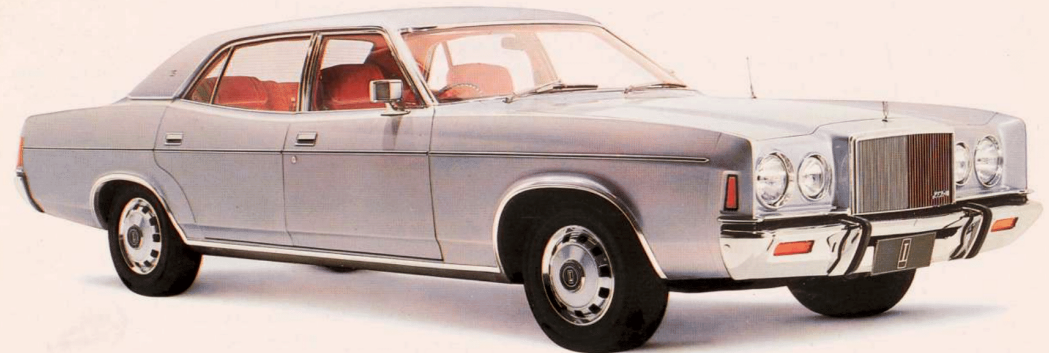
Ideal for long-range touring, this option provides a fuel tank designed to hold 26 gallons — approximately 8½ gallons more than the standard fuel tank capacity. When this option is specified, the spare wheel is repositioned in the luggage compartment rather than within the fuel tank.

### 7. White Side-Wall Tyres

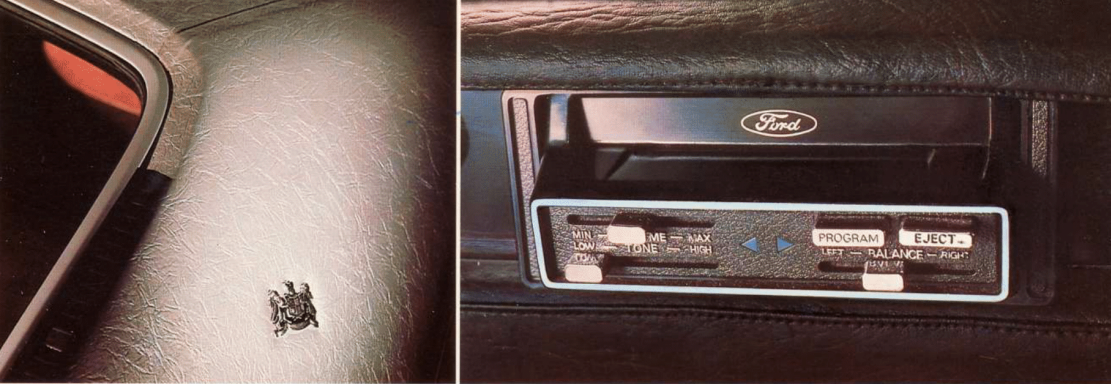
White side-wall steel-belt radial tyres are optional.

### 8. Luxury Crushed Velour Cloth Trim

Your upholstery choice is extended with the availability of rich velour cloth trim at no additional cost. Available in three colours: Ginger, Doeskin, and Black.







## TOWING PACKAGES

There are two factory-fitted LTD towing packages available —

### *Class I Towing Pack*

The Class I Towing Pack option has the capacity to tow small trailers, boats and caravans, etc. up to 2000 lbs (907 kg). An electrical plug/connector is provided.

### *Class II Towing Pack*

The Class II Towing Pack option has the capacity to tow horse

floats, large caravans and boats etc. between 2000 and 3500 lbs (907 and 1587 kg). It consists of:

- A load distributing hitch\*
- Body reinforcements
- Heavy Duty suspension
- Extra engine cooling equipment
- Upgraded flasher unit
- Electrical plug/connector

\*NOTE: Insert bar with towing head, including ball, is separately supplied by the dealer to suit individual customer towing requirements (this equipment is not included in the option price).



# FORD LTD SPECIFICATIONS

## ENGINE

The Ford 5.8 litre V8 engine is standard. It complies with the legislated Exhaust Emission standards for exhaust gas cleanliness levels. 8.9:1 compression ratio with a carter thermoquad 4-barrel/automatic choke carburettor and with electronic ignition.

## TRANSMISSION

T-bar SelectShift Cruisomatic 3-speed lets you drive "automatically" or shift manually through the gears. Three forward gears, one reverse. This system gives effective engine braking in low gear for better control on steep grades and hilly driving.

## BRAKES

Power-assisted 4-wheel disc brakes, 11¼ inch diameter, ventilated and turbo-cooled for fade-free operation. Dual hydraulic system with proportioning valve and dash mounted circuit failure warning light. Park brake warning light.

## STEERING

Variable ratio power assistance gives you completely effortless handling and parking . . . with precise instant response and excellent 'feel' of the road.

## WHEELS & TYRES

Tyres are performance rated by the Australian Rubber Manufacturers and are fitted on double-sided safety rim wheels.

Wheel size: 6" x 14" diameter.

Tyres: FR78S x 14 steel-belt radial.

## EXTERIOR COLOUR CHOICES

- |                                 |                      |
|---------------------------------|----------------------|
| <b>12 Standard Body Colours</b> | • Sherwood Green     |
| • Antique Beige Metallic        | • Metallic           |
| • Outback Bronze Metallic       | • Cool Mint Metallic |
| • Gold Rush Metallic            | • Banana Blush       |
| • Brown Satin Metallic          | • Mushroom Beige     |
| • Blue Steel Metallic           | • Sno White          |
| • Platinum Blue Metallic        | • Neptune Blue       |

## 5 Optional\* Metallic Body Colours

- |                 |                   |
|-----------------|-------------------|
| • Regency Blue  | • Regency Bronze  |
| • Regency Green | • Stardust Silver |
| • Regency Lime  |                   |

## INTERIOR TRIM COLOUR CHOICES

- |           |          |
|-----------|----------|
| • Black   | • Dusk   |
| • Doeskin | • Ginger |

## VINYL ROOF COLOUR CHOICES

- |         |             |
|---------|-------------|
| • Black | • Brown     |
| • White | • Green     |
| • Blue  | • Parchment |

**Plus Optional\* Silver Monarch Luxury Group**  
Stardust Silver Metallic Paint with imported Normandy Grain Silver Vinyl Roof and unique "Cranberry" Red Crushed Velour Interior Trim.

\*Optional at extra cost

## EXTERIOR DIMENSIONS

Wheelbase	3074 mm (121.0 ins.)
Track—Front	1536 mm ( 60.5 ins.)
Track—Rear	1524 mm ( 60.0 ins.)
Overall Length	5364 mm (211.2 ins.)
Overall Height	1366 mm ( 53.8 ins.)
Overall Width	1956 mm ( 77.0 ins.)

## INTERIOR DIMENSIONS

Front Compartment	
Headroom	965 mm (38.0 ins.)
Legroom	1033 mm (40.7 ins.)
Hiproom	1529 mm (60.2 ins.)
Rear Compartment	
Headroom	927 mm (36.5 ins.)
Legroom	1067 mm (42.0 ins.)
Shoulder Room	1524 mm (60.0 ins.)
Hiproom	1529 mm (60.2 ins.)
Luggage Cap.	.49 m <sup>3</sup> (17.5 cu. ft.)
Fuel Tank Cap.	79.5 litres (17.5 gals.)
Turning Circle	12 metres (42.2 ft.)
Kerb Weight	1832 kg (4036 lbs.)

## FORD WARRANTY:

Subject to such other conditions, warranties and/or undertakings which may apply from time to time under the laws of Australia and/or any applicable State or Territory thereof, FORD\*WARRANTS with respect to each new commercial vehicle sold by Ford, that for a period of 12 months or 20,000 kilometres (whichever first occurs) from the date of original retail sale, FORD WILL repair or replace free of charge any part of such vehicle (except tyres) found to be defective in factory materials or workmanship under normal use and operation within Australia, PROVIDED THAT:—

- (i) the vehicle has been properly used, operated, maintained and cared for within the manufacturer's operation and capacity limitations, and
- (ii) the repair or replacement is carried out by an authorised Ford Dealer.

\*"Ford" means, Ford Sales Company of Australia Limited.

## PLEASE NOTE:

The illustrations, information and specifications presented and referred to herein were correct at the time

when this publication was approved for printing; however, Ford Motor Company of Australia Limited and/or Ford Sales Company of Australia Limited reserve(s) the right, subject to the laws of Australia and/or any applicable State or Territory thereof and/or the regulations of any competent authority which may apply from time to time, at their or its discretion, and without notice, to discontinue or change the specifications, design and prices of the products referred to herein and any options therefor at any time without incurring any liability whatsoever to any purchaser thereof. Some of the items illustrated or referred to herein are optional at extra cost. Some options may be required in combination with other options. Always consult your Ford Dealer for the latest information on models, specifications, features, prices, options and availability.

FORD MOTOR COMPANY OF AUSTRALIA LIMITED.  
FORD SALES COMPANY OF AUSTRALIA LIMITED.  
1735 Sydney Road, Campbellfield, Victoria.

FORD LTD

