

# **NEW CORTINA**

**A lot more little car!**





# CORTINA L ...

Prepare to change your ideas on how much car you can get for your money. New Cortina L sets the pace and puts a lot more little car within reach of your budget.

A 2000 cc OHC engine, power disc brakes, rear window defroster are among the many standard features offered on the Cortina L.



3 speed floor-mounted automatic transmission with console.

**Size it up.** For a small car, Cortina gives you plenty of room for the driver and passengers. Lengthening the wheelbase to 101.5 inches and widening the track to 56 inches resulted in more room in the passenger compartment.



Safety-designed recessed door handles.

**Interiors.** Inside, you see more luxury all around you than you'd expect. Cortina L has hard-wearing loop-pile carpeting fitted throughout. There's a rear window defroster. The doors are full vinyl



Electric rear window defroster.

trim, the headlining is perforated for sound absorption and the interior colour keyed. There are grab handles for your convenience and even a cigarette lighter to save you from scrambling for matches.

**Seats.** The scientifically designed seats are contoured to support you firmly and comfortably during the ride. The front bucket seats are fully reclining, and have a special head-restraint system built into a strong seat back. The hard-wearing vinyl covering is also easy washing. Adjusting the seats is quick and simple, as they are mounted on ball-bearing and roller slides with a front-operating lever.

**Engine.** A 2000 cc Overhead Camshaft Engine is standard. With its crossflow cylinder head and bowl-in-piston combustion chamber you get more power. But this efficient and economical engine gives great gas economy. A 1600 cc Cortina model is also available.

**Maintenance.** Cortina is designed to run 6,000 miles between service intervals after your first check-up.

**Brakes.** A zippy little car needs fast-stop fade-free brakes. Cortina is fitted with power front disc brakes. They have rubber piston boots on the caliper to give long-life protection. The rear drum

brakes have no sliding cylinders or shoe anchors to go wrong, and the system is sealed against dirt and water.

**Rack and pinion steering.** This steering design provides quick, precise maneuverability. The pinion at the end of the steering shaft engages the rack, which is directly connected to the tie rods. It is found mostly on expensive European sports cars. And it is also found on Cortina.



Lined trunk with 12 cu. ft. capacity.

**To sum up:** Cortina L comes completely equipped to offer you a new higher standard of driving in an import. If you want to stretch the value of your money on a great little car that offers you economy plus comfort and convenience, Cortina L is for you.



# A European beauty



Upper: Cortina L 4-door sedan. Lower Left: Cortina L 2-door sedan. Lower Right: Cortina L all vinyl fully-reclining bucket seats are standard.



# CORTINA GT...

What's the definition of Cortina GT . . . ? Excitement. Rally. Performance. And that means tachometer. OHC engine. And all the things that make up a car with the initials GT.

Things like Cortina GT's snappy, close-ratio 4-speed transmission for swift, positive acceleration and rack and pinion steering that provides precise maneuverability, and makes driving a re-awakened experience. Stopping is fast and safe with power front disc brakes and 9" rear drum brakes.

But the engine is the place where the excitement starts, so that is the logical point to start examining.



*Full Cortina GT instrumentation including: 0-130 mph speedometer, tachometer, oil pressure, water temperature, alternator, fuel gauge, and electric clock.*

**GT's Engine.** The 2000 cc Overhead Camshaft Engine with its four-in-line cylinders and five-bearing camshaft is standard. The new OHC engine has been skilfully modified to give better efficiency, reduced engine wear, increased component life and improved performance. The neoprene rubber camshaft belt drive



*Cortina GT grille medallion.*

is quieter than the conventional chain-driven version and makes for more accurate timing.

**Maintenance.** Cortina GT's engine is also reliable and tough — the car runs and runs without the need for constant retuning. Cortina GT is designed to run 6,000 miles between service intervals after your first check-up. And the GT is a real sport for low, economical fuel consumption.

**Suspension.** Cortina GT is a real smooth operator when it comes to bumps. The newly developed Short and Long Arm front suspension with four-bar links at the rear has been made stiffer to give superb roadholding at higher speeds. A stabilizer bar is fitted for extra stability on corners.



*Optional styled steel wheels.*

## **Interior and Exterior Features.**

Tachometer, Speedometer and Electric Clock are located in an easy-to-view position immediately in front of the driver. Between the front seats there is a completely equipped centre console, which holds four additional instruments — fuel, temperature, oil pressure, ammeter. Also, there's a leather-rimmed sports steering wheel, matching gearshift knob, wall-to-wall carpeting, rear window defroster, cigarette lighter and a host of other features.



*4 speed close-ratio manual transmission with leather covered shift knob.*

The Rally-type seats have been designed to give firmer lumbar and lateral support. The deep-padded front bucket seats are fully reclining with an integral head restraint system built-in. Hardwearing cloth and vinyl adds the finishing touch of luxury.

Outside, there's a distinctive blackout grille. A GT stripe on the body side panels. Black matte applique for the back. Special 13" pressed steel wheels with sports type hub caps and bright door mouldings.

Cortina GT is for the enthusiastic driver. For such a driver the GT offers a new, exciting style of driving—at a price most people can afford.



# Great little performer



Upper: Cortina GT 2-door sedan with optional styled steel wheels. Lower Left: Cortina GT 2-door sedan with black matte rear deck applique. Lower Right: Cortina GT fabric & vinyl covering on fully-reclining bucket seats (standard) with integral head restraints.



# CORTINA WAGON

Almost everybody at sometime or another will wish they had a little more space in their car. On those occasions like on holidays and when shopping. Or maybe at times when you have to take all the kids somewhere.

The all-new Cortina Wagon offers you this extra space. And at the same time provides you the good looks and comfort of a sedan.

The Cortina Wagon is big where it matters—inside. Thanks to the 56 in. wide track and 101.5 in. long wheelbase, which also gives you a stable and extremely smooth ride.

A big luggage compartment of 32.3 cu. ft. And it's all usable space. No more worries about where all the holiday luggage is going to go, or the kids. And supposing you need more space. Just a simple click of a catch on the back of the convertible rear seat and the seat will fold down flat to give you 63.8 cu. ft. of space. 44 in. wide, 75.2 in. long. Think of the number of problems that sort of space and versatility would solve.



*Safety-designed wrap-around front directional signal light.*

**Suspension.** The system is designed to give better road holding and ride with increased stability and reduced noise, vibration, harshness. Front suspension is Short and Long Arm while at the rear it's four bar links.

**Brakes.** Power front disc brakes are standard, with drum brakes on the rear. The system is dual line (a red light informs you), which means that if one circuit fails, the other will go on operating.



*Standard, Cortina L swept-away instrument panel with adjustable upper-level ventilation.*



*Cortina L Estate Wagon.*

**Seats.** The seats have been scientifically designed to give you increased lumbar and lateral support. This means the seat holds you firmly during the ride and leaves you feeling more relaxed after. The front bucket seats are fully reclining and the rear seat gives you a level of comfort which is not available in many station wagons in Cortina's class.

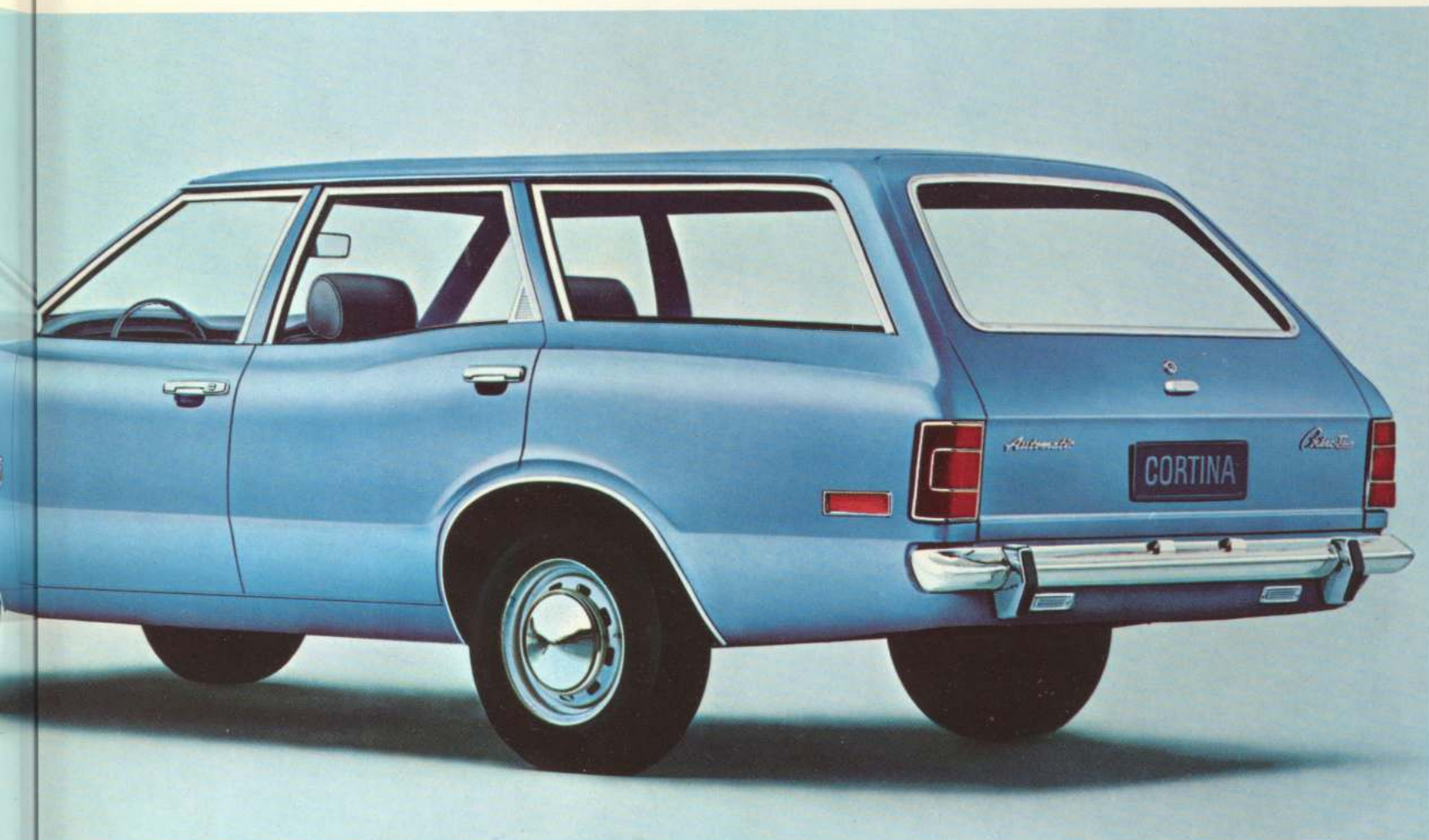
**Engine.** A 2000 cc Overhead Camshaft is standard, which means more power to you and great gas economy.

**Maintenance.** The Cortina Wagon is designed to run 6,000 miles between service intervals after your first check-up.

**Standard Features.** The Cortina



# WAGON...Big inside story



Wagon sets a high standard in wagon luxury. There's loop-pile carpeting throughout the passenger compartment, while the luggage space has hard-wearing rubber covering. There's sound absorbing perforated headlining and the interior is colour keyed. The doors are full vinyl trim, the bucket seats fully reclining, there are grab handles over the rear doors for safety and convenience, and a cigarette lighter is fitted as standard. A useful device is the foot-operated wiper/washer control. One press squirts water onto the windshield and operates the wipers for a few strokes.

Wagons need a tougher suspension system for the heavier loads they carry. Cortina Wagon's Heavy



63.8 cu. ft. carrying capacity (with rear seat folded down) in Cortina L Estate Wagon.

Duty Suspension comes standard. It consists of a heavy duty suspension and 6.95x13 crossply reinforced tires on 5½" rim wheels.



# SPECIFICATIONS

## Standard Equipment—Cortina L (Including Estate Wagon)

- Engine 2000cc 4-Cylinder OHC
- Transmission — Fully Synchronized 4-speed manual
  - Floor mounted shift lever
- Rack and Pinion Steering
- Brakes — Power Front Discs
  - Sealed Drum System — Rear
  - Dual Line System
- Heavy Duty Suspension, Short & Long Arm
  - Front — Four Bar Link Rear Plus Stabilizer Bar
- Tires 6.95s x 13 BSW Crossply 4 ply, 5 1/2" rims
- Rear Window Defroster (Electric)
- Foot Operated Windshield Washer/Wiper and 2-speed wipers
- Fully Reclining Bucket Seats with Head Restraints, all vinyl
- Loop Pile Carpeting
- Front and Rear Grab Handles
- Armrests Front and Rear
- Cigarette Lighter
- 35 amp. Alternator
- 55 amp. Battery 166 amp. with automatic transmission
- Pre-engaged Starter
- Heavy Duty Heater
- Door Mounted outside Rear View Mirror
- Bright metal door and window trim
- Wheel lip mouldings
- Bumper guards, front and rear
- Day/night rear view mirror

## Standard Equipment—Cortina GT

(In addition to the equipment on the Cortina L)

- Special rear deck paint treatment with back panel trim
- Unique grille paint treatment
- Rally seats, all vinyl trim with integral head restraints
- Map pockets, document pocket (driver's sunvisor)
- Console
- Leather gearshift knob
- Opening rear quarter windows
- Electric clock
- GT instrumentation
- Special close ratio transmission and axle ratio
- Full unique GT wheel covers

## Dimensions

Wheelbase	101.5"	Track	Front	56.0"
Overall length	168.1"		Rear	56.0"
Overall width	67.2"	Head room	Front	37.5"
Overall height	53.8"		Rear	36.9"
Trunk capacity	12.0 cu. ft.	Leg room	Front	40.6"
Fuel tank capacity	12.0 gal.		Rear	34.2"
Curb weight	2117 app. lbs.			

## Engines

### 2000 cc (2 litre) 4-Cylinder Engine Specifications

Type	4-Cylinder, In-Line, Overhead Cam
Displacement (cubic centimeters)	1993 c.c.
Bore and Stroke (inches)	3.575 x 3.029
Compression Ratio	9.0 to 1
Brake Horsepower	100 @ 5600 r.p.m.
Maximum Torque (lbs.-ft.)	120 @ 3600 r.p.m.
Main Bearings	5
Valve Lifters	Mechanical, Overhead Cam
Carburetor	2V Automatic Choke
Fuel	Regular

### 1600 cc 4-Cylinder Engine Specifications

Type	4-Cylinder, In-Line, Overhead Valve
Displacement (cubic centimeters)	1600 c.c.
Bore and Stroke (inches)	3.188 x 3.056
Compression Ratio	8.4 to 1
Brake Horsepower	75 @ 5000 r.p.m.
Maximum Torque (lbs.-ft.)	96 @ 3000 r.p.m.
Main Bearings	5
Valve Lifters	Mechanical
Carburetor	1V Automatic Choke
Fuel	Regular



The 2000 cc engine is standard equipment on the Cortina L and GT. Automatic transmission and styled steel road wheels are the available options.



1600 cc optional engine is available on Cortina L sedan only. Power disc brakes, automatic transmission and rear window defroster are not available with this engine.

## OPTIONS

### Automatic transmission

The transmission provides three forward and one reverse gear. First and second gears can be held to fast acceleration, and engine braking. Kick-down accelerator pedal provides instant change-down for swift, safe overtaking. Automatic transmission is matched to the 2000 cc OHC engine only.

### 1600 cc OHV engine

This engine retains the successful crossflow cylinder head with bowl-in-piston which improves performance, cuts engine wear and delivers great economical fuel consumption.

### Styled Steel Road Wheels

Sculptured steel road wheels complement the all-new Cortina's natural sporting looks.

## Cortina Safety Design Features

- Dual hydraulic brake system with warning light
- Glare-reduced instrument panel padding, windshield wiper arms, steering wheel hub, rearview mirror, windshield pillars and mirror mounting.
- Energy-absorbing steering column and steering wheel
- Energy-absorbing armrests and safety-designed recessed door handles
- Three-point restraint system, shoulder belt and mini-buckle for front passengers
- Lap belts for rear passengers
- Turn indicators
- Energy-absorbing instrument panel with padding
- Padded sunvisors
- High strength laminate safety glass windshield
- Safety door latches and hinges
- Emergency flasher
- Backup lights
- Side marker lights and reflectors
- Energy-absorbing front seat back tops with padding
- Self-locking front seat backs
- Safety rim wheels and loadrated tires
- Corrosion-resistant brake lines
- Steering wheel pad
- Non-reversing odometer
- Safety designed switches for instrument panel controls
- Theft guard column-mounted ignition and steering wheel lock

The specifications contained herein were in effect at the time this folder was approved for printing. However, because of continuing product improvements and refinements, Ford Motor Company of Canada, Limited, reserves the right to discontinue models at any time or change specifications or design, without notice and without incurring obligations.



All new Cortina  
At Mercury and selected Ford dealers

