

1 9 8 8

FORD TEMPO



FORD TEMPO FOR 1988



Best-built American Cars seven years running. For the past seven consecutive years, Ford quality has led all other American car companies. That's based on an average of owner reported problems in a series of surveys of '81-'87 models designed and built in North America.

Several years ago, Ford Motor Company embarked on the most ambitious design program in the Company's history. It was a program that would dramatically change the way our cars are designed and built, their looks and the way they drive.

Our approach to quality was and still is a major part of the program. When we say that "Quality is Job 1," we mean exactly that. It is an ongoing commitment which means we are constantly searching and striving for new and better ways to improve our quality. We want to

make the cars and trucks we build tomorrow better than the ones built today. No other issue has higher priority than the quality of the cars and trucks we produce. And we back it up with innovative support programs like the Lifetime Service Guarantee (see page 23 for details) and outstanding warranty coverages.

As you read through this catalog about the 1988 Ford Tempo, you'll see the results of our commitment. We think you'll like the way Tempo looks. Restyled on the outside. Refined on the inside. And we think you'll like the way it acts, too. Responsive multiple port electronic fuel injection. 4-wheel independent suspension. Front-wheel drive. All-Wheel-Drive. Sure, we've changed Tempo.

Not, as the saying goes, for change's sake, but to make it better in ways that satisfy your driving desires and reward your judgement.

Availability of Tempo GLS and All-Wheel-Drive will be delayed. See your Ford Dealer for timing information.

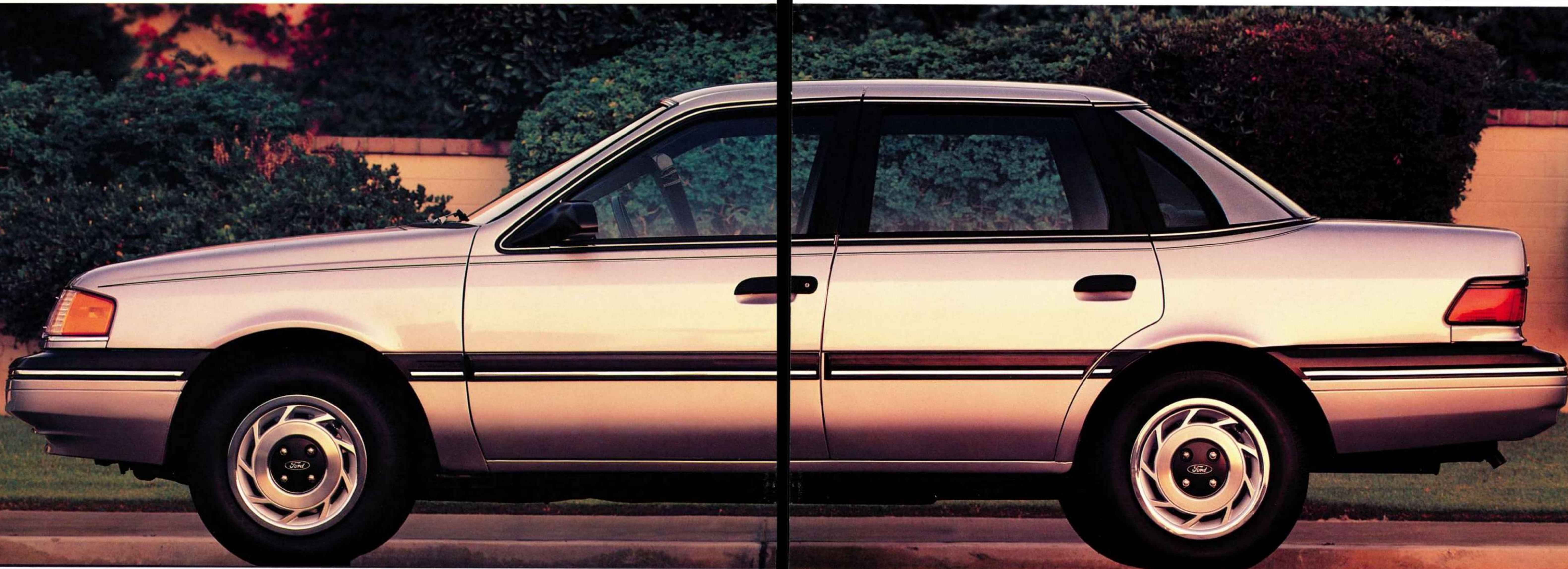


Contents

Tempo LX	4-7
Tempo Interior Comfort	8-9
Tempo Ride and Handling	10-11
Tempo All-Wheel-Drive	12-13
Tempo GLS	14-17
Tempo GL	18-19

Left: Ford Tempo GLS 4-Door shown in Black. Some equipment shown may be optional. See the options list on pages 20-21.

FORD TEMPO LX: THE EVOLUTION CONTINUES



Ford Tempo LX shown in Silver Clearcoat Metallic. Some equipment shown may be optional. See the options list on pages 20-21.



Tempo LX instrument panel shown in Regatta Blue. Some equipment shown may be optional. See the options list on pages 20-21.



Looking at Tempo's form, one could easily overlook the fact that it is also very functional and capable when it comes to the open road. What with 4-wheel independent suspension, front-wheel drive, gas-pressurized struts (standard on LX, All-Wheel-Drive and GLS), power assisted rack and pinion steering and the like. So, as a subtle reminder that form does in fact follow function, we've restyled the instrument panel and driver command center to give you something else to "overlook."

TEMPO INTERIOR COMFORT

One thing that can't be overlooked is Tempo's interior. It's comfortable, roomy and very well equipped.

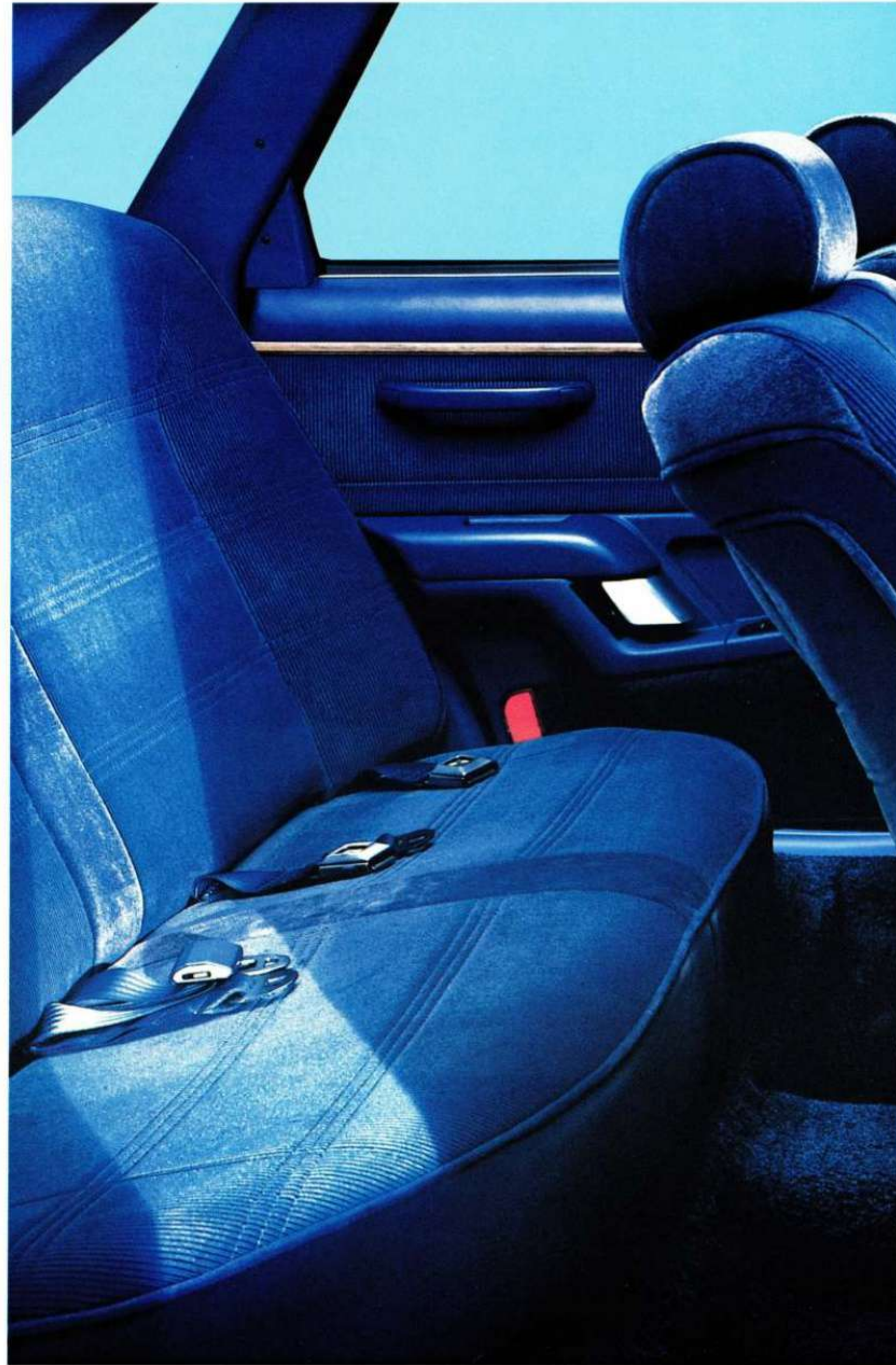
Rich cloth materials make the seats warm and inviting. Front bucket seats are body-contoured for firm back and thigh support. Reclining seat backs make it easy to find a comfortable position. The rear seat offers room and comfort for up to three passengers. A new automatic shoulder belt passive restraint system for front seat occupants has been made standard in '88 Tempos. It includes a motorized two-point shoulder harness and manual lap belt. If you're surprised when you look at the list of standard equipment on page 21, you shouldn't be. Tempo has always offered plenty of value for your dollar. A few of the LX highlights: tilt steering wheel; power door locks and decklid release; electronic AM/FM stereo radio (may be deleted for credit); and much more.



With the ignition off, and the adjacent door opened, the harness assumes the position at the A-pillar, as shown here. Note that it is positioned well out of the way so it doesn't interfere with entry and exit.



When the ignition is switched on, and the adjacent door is closed, the shoulder harness automatically slides rearward in a track along the top of the door. All you have to do is buckle the lap belt.



Left: Tempo LX interior shown in Regatta Blue.

Electronic AM/FM stereo radio is standard in all Tempos. GLS also includes a cassette tape player.

Ford Tempo is also one of the very few production cars in the world to offer the supplemental driver's side air bag restraint system. It's available on GL and LX models.

Some equipment shown may be optional. See the options list on pages 20-21.

ADVANCED ENGINEERING AND AFFORDABILITY — A PERFECT MATCH

To be sure, there are cars on the road that can match engineering features with the 1988 Ford Tempo. Electronic fuel injection, front-wheel drive, optional all-wheel-drive, 4-wheel independent suspension, power assisted rack and pinion steering, a refined dynamic shape. The list goes on. But Tempo combines all that with an affordable price tag.

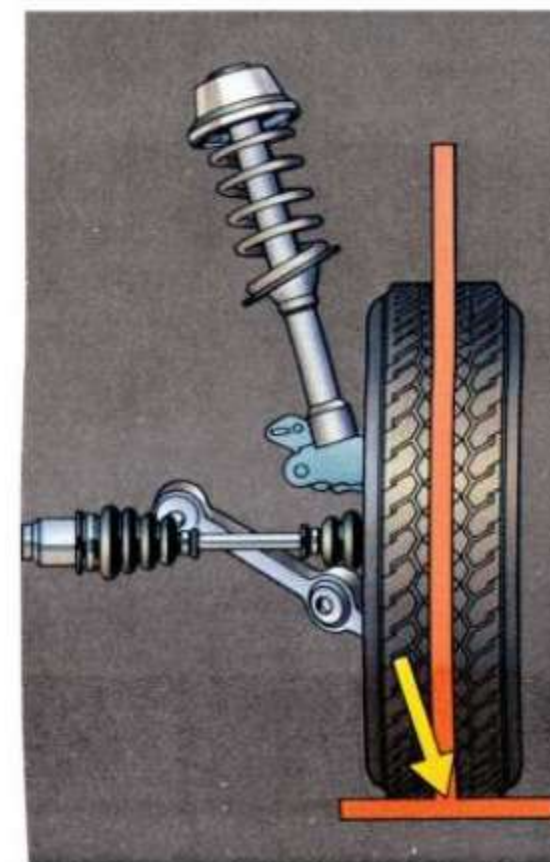
For 1988, Tempo's 2300 HSC and HSO engines incorporate electronically controlled multiple port fuel injection. Multiple port fuel injection provides individual fuel injectors at each cylinder intake port for improved overall operation, smooth running and easy starting in temperature extremes.

Tempo's front-wheel drive provides excellent traction in all weather conditions. Four-wheel fully independent suspension systems allow each wheel to react individually to the road surface. The LX, GLS and All-Wheel-Drive Tempos use gas-pressurized struts to help give a firm, smooth ride. And power assisted rack and pinion steering helps give Tempo remarkable reflexes.

Another contributing factor to Tempo's quality of ride and handling is its shape. Flush-designed aero-style headlamps, smooth wrapover doors and concealed drip moldings help to reduce wind noise. Plus careful fine-tuning of selected design areas contributes to directional stability and cornering agility.

Front-wheel drive puts the engine over the driving wheels for good traction rain or shine. Tempo All-Wheel-Drive provides the added security of four driving, gripping wheels.

Tempo LX, All-Wheel-Drive and GLS models have gas-pressurized struts at all four corners. The turning axis of the front wheels intersects the road slightly outboard of the center line of the tires. This "negative scrub" geometry is an important factor in steering responsiveness.



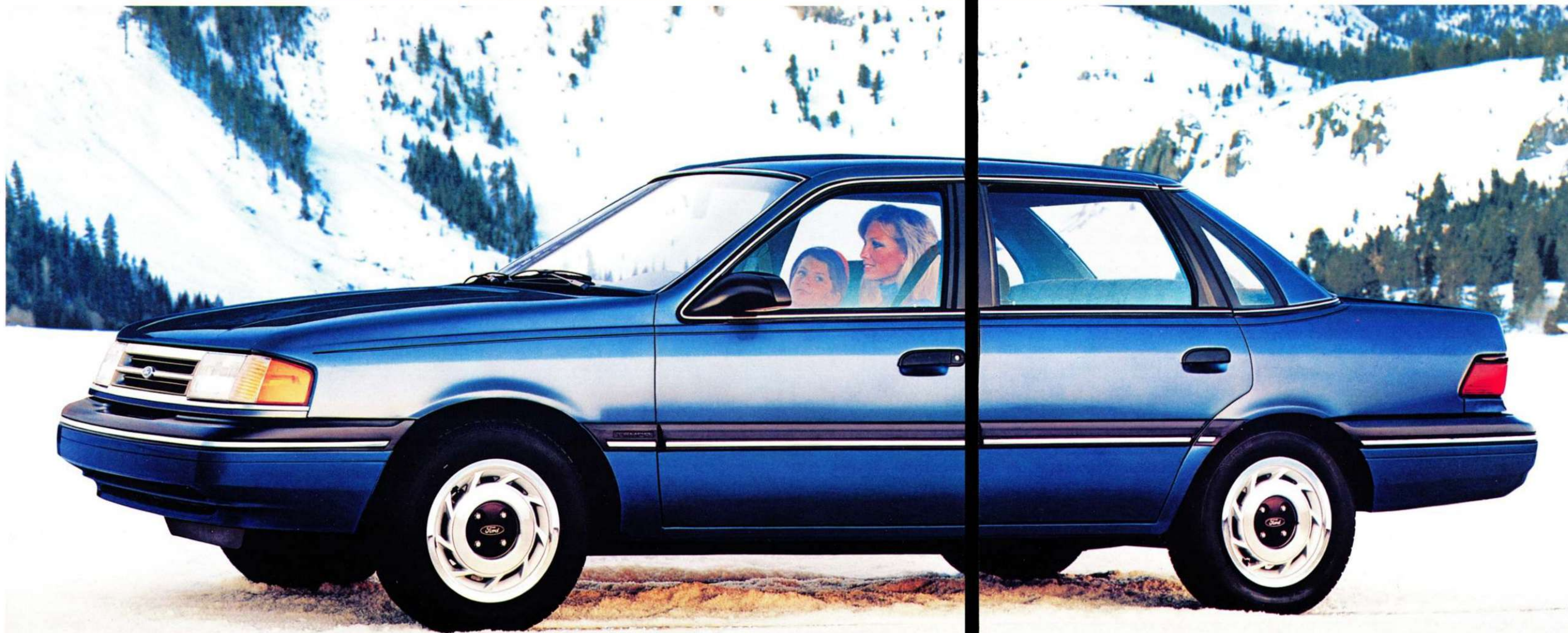
Tempo LX 4-Door shown in Medium Red Clearcoat Metallic.

Tempo's electronically controlled multiple port fuel injected engines feature high swirl combustion chamber designs for responsive power.

Power assisted rack and pinion steering helps give Tempo remarkable reflexes.

Some equipment shown may be optional. See the options list on pages 20-21.

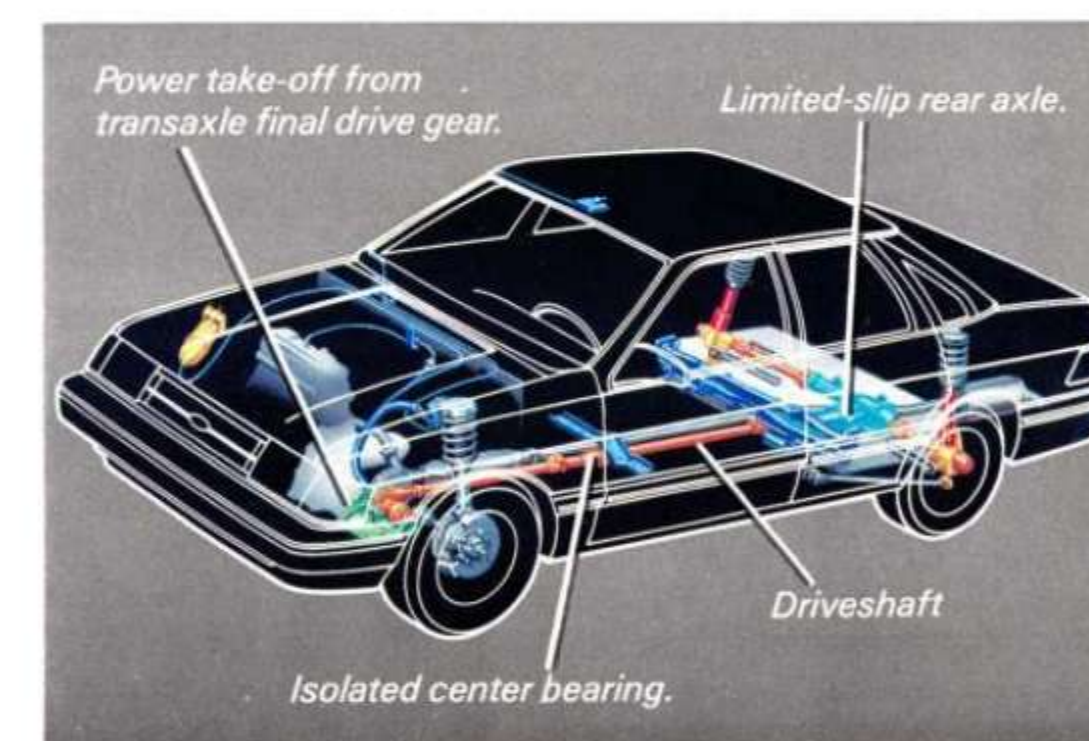
FORD TEMPO ALL-WHEEL-DRIVE



Even with the admittedly good traction offered by the front-wheel drive Tempo, there will undoubtedly come a time when you'll appreciate the extra traction of an all-wheel-drive vehicle. Especially one that treats you to so much interior comfort. And if it comes in a package like the advanced dynamic design Tempo All-Wheel-Drive 4-door model shown here, then it's all the better.

Tempo All-Wheel-Drive is an "on-demand" system. That simply means power is normally supplied to the front wheels only and that you can select the all-wheel-drive mode any time weather or road conditions warrant. And switching to all-wheel-drive is easy. Just flip the rocker switch in the overhead map light console to the "ON" position. An indicator light tells you that you have the added security of four gripping, driving wheels.

Tempo All-Wheel-Drive is not designed to take you off-road. It's designed to keep you traveling on it.



The compact design of Tempo All-Wheel-Drive system helps maintain Tempo's car-like ground clearance with easy step-in height.

Above: Tempo All-Wheel-Drive, available in 4-Door models only, shown in Dark Shadow Blue Clearcoat Metallic.

Some equipment shown may be optional. See the options list on pages 20-21.

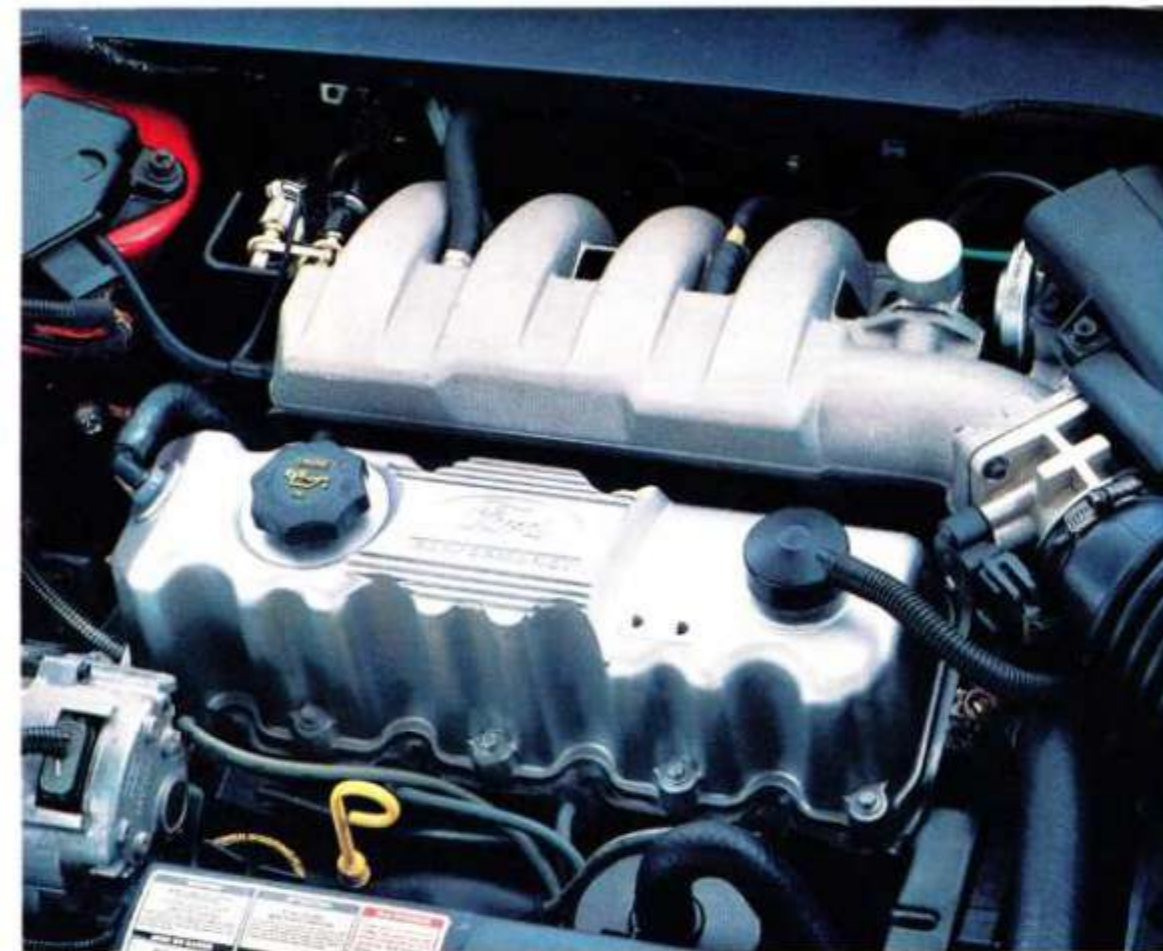
FORD TEMPO GLS



Tempo GLS proves that you don't have to sacrifice driving performance to get room and comfort for five passengers. The 2300 HSO engine and 5-speed manual transaxle provide part of the performance. The 4-wheel independent touring suspension system with gas struts and the power rack and pinion steering system provide the other part.

Tempo GLS 2-Door shown in Oxford White. Some equipment shown may be optional. See the options list on pages 20-21.

FORD TEMPO GLS



Above: Tempo GLS 2300 HSO engine.

Below: Electronic AM/FM stereo radio with cassette tape player.



Left: Tempo GLS 4-Door shown in Black. Tempo GLS 2-Door shown in Light Grey.

Tempo GLS is the Tempo sport model designed for those of you who require a little more in the way of performance. And GLS provides that in your choice of 2- and 4-door models.

Under the hood of the GLS sits a slightly modified (over the standard LX and GL engine) electronically controlled, multiple port fuel injected overhead valve four cylinder engine. The actual designation is 2300 HSO (for Higher Specific Output). It's coupled with the standard 5-speed manual transaxle or the optional automatic transaxle. Even the final drive gearing is different to support a more sporty attitude.

A firm touring suspension package with gas-pressurized struts, front stabilizer bar and

performance radials help hold you to the road.

The exterior features a restyled front end, rear bumper and wraparound taillamps. And a new rear spoiler has been added to the decklid of 2-door models. In addition, GLS 4-door models receive a special black-out treatment on the grille and rear "D" pillar.

The interior provides room and comfort for five passengers. The front performance bucket seats feature high density foam pads in the side bolsters, a power adjustable lumbar support and four-way adjustable headrests. An electronic AM/FM stereo radio with cassette tape player and Dolby® noise reduction is just one of GLS' many standard features. For a more complete list, please see pages 20-21.

Right: Tempo GLS interior shown in Scarlet Red.

Some equipment shown may be optional. See the options list on pages 20-21.



FORD TEMPO GL: NEW LOOKS. MORE VALUE.

The 1988 Tempo GL represents another step forward in the Ford philosophy of continual product improvement.

Tempo 4-door models have undergone a major transformation on the outside and on the inside. Restyled fenders, quarter panels, doors and decklid accentuate Tempo's new sleek lines.

Inside, there's more value in the form of increased standard features. The electronic AM/FM stereo radio with digital clock, the consolette and new motorized passive restraint shoulder belt system are a few examples. The redesigned instrument panel gives a more spacious feeling for front seat occupants. A temperature gauge has also been made standard and the instrumentation is backlit with lighted pointers for good night readability.

Under the hood there's improved performance with the 2300 HSC engine and electronically controlled multiple port fuel injection. Multiple port fuel injection eliminates the need for a carburetor by providing individual fuel injectors at each cylinder intake valve for precise fuel metering. Other benefits are improved performance, overall operation, smooth running and easy starting in temperature extremes.

The 1988 Ford Tempo has a lot to offer the value-conscious buyer. Like the new Special Value Tempo GL equipment package. It includes air conditioning, power lock group, dual remote control mirrors and a tilt steering wheel, all at substantial savings.*

See and drive the 1988 Ford Tempo GL soon.

*Based on the manufacturer's suggested retail price for the package compared to the price of the options purchased separately.



*Right: Tempo GL 4-Door
shown in Medium Red
Clearcoat Metallic.*

*Right: Tempo GL interior
shown in Scarlet Red.*



*Tempo GL 2-Door shown
in Graphite Clearcoat
Metallic.*

*Some equipment shown
may be optional. See the
options list on pages
20-21.*



TEMPO FEATURES AND OPTIONS



Illustrated options: (A) Speed control and tilt steering wheel (B) Electronic AM/FM stereo radio with cassette tape player (C) Power driver's seat (D) Air conditioning (E) Decklid luggage rack (delayed availability on 4-door models. See your dealer for details) (F) Polycast wheels

Building cars with advanced occupant safety technology is not new to Ford. In fact, as early as 1956, Ford cars included standard safety features such as safety door latches, energy-absorbing (deep-dish) steering wheels, strengthened seat anchors and shatter-resistant rearview mirrors. That same year Ford also offered three items that have since become standard on all cars: safety belts; energy-absorbing instrument panels; and energy-absorbing sun visors.

Today, Ford is at the forefront of yet another pioneering effort in improving occupant safety by offering an optional supplemental driver air bag restraint system on Tempo GL and LX 4-door models.

Laboratory testing and real world experience indicate that supplemental air bags, used in combination with safety belts, have the potential of providing extra protection against chest and face injuries that might otherwise occur in severe front end impacts.

The air bag is concealed and located in a module located beneath the center of the steering wheel. It is designed to deploy in the event of a serious frontal impact roughly equivalent to striking a parked car at 25 miles per hour.



Optional supplemental driver air bag restraint system

The entire event — from initial impact to full deployment — takes approximately 55 milliseconds. In comparison, it takes 100 milliseconds to blink an eye.

The supplemental driver air bag is designed primarily to help improve driver protection in a severe frontal impact and safety belts are designed to provide protection in all types of impacts, including frontal impacts. So the air bag and safety belt, together, offer an added measure of protection. The air bag is intended to supplement, not the replace the safety belt, which is the most effective occupant protection device available.

It should be stressed that even a safety belt supplemented by an air bag does not provide absolute protection. However, the potential of this combination for helping to prevent chest and face injuries cannot be overlooked.

• = Standard ■ = Optional	GL	GLS	LX	All-Wheel Drive
ENGINEERING				
2300 HSC engine/5-speed manual transaxle	•	•	•	•
2300 HSO engine/5-speed manual transaxle	•	•	•	•
2300 HSO engine/FLC automatic transaxle	•	•	•	•
FLC automatic transaxle	■	■	■	■
EEC-IV electronic engine controls	•	•	•	•
4-wheel independent suspension	•	•	•	•
Touring suspension with gas-pressurized struts	•	•	•	•
Split diagonal power front disc/rear drum brakes	•	•	•	•
Power rack and pinion steering	•	•	•	•
P185/70R14 BSW All Season tires	•	•	•	•
P185/70R14 BSW All-Season performance tires (1)	•	•	•	•
White sidewall tires	■	■	■	■
EXTERIOR				
Black left-hand sail-mounted mirror	•	•	•	•
Black dual electric remote-control mirrors	■	•	•	•
Bodyside moldings	•	•	•	•
Dual hood stripes	•	•	•	•
Dual upper bodyside and decklid stripes	•	•	•	•
Clearcoat paint	■	■	■	■
Decklid luggage rack (except 2-door GLS)(2)	■	■	■	■
Deluxe wheel covers	•	•	•	•
Polycast road wheels	■	•	•	•
INTERIOR				
Low-back reclining front bucket seats	•	•	•	•
Luxury cloth seat trim with seat-back pockets	•	•	•	•
Sport performance bucket seats with power lumbar support	•	•	•	•
Front center armrest	■	■	•	•
Automatic shoulder belt restraint system	•	•	•	•
Manual lap belts, front and rear	•	•	•	•
Supplemental air bag restraint system (driver only) for GL and LX models	■	•	■	•
Luxury-level carpeting	•	•	•	•
Sport instrument cluster; tachometer, trip odometer, temperature gauge and door ajar light	■	•	•	•
Interval wipers	•	•	•	•
Leather-wrapped steering wheel	•	•	•	•
Electronic digital clock	•	•	•	•
Consolette	•	•	•	•
Light Group (3)	•	•	•	•
Dual visor mirrors	•	•	•	•
Overhead all-wheel drive selector switch	•	•	•	•
Package tray	•	•	•	•
Rear window defroster	■	■	■	■
Tinted glass	•	•	•	•
Side window demisters	•	•	•	•
Inside hood release	•	•	•	•
Electronic AM/FM stereo radio (may be deleted for credit)	•	•	•	•
Electronic AM/FM stereo radio with cassette tape player and cassette storage tray	■	•	■	■
Tilt steering wheel	■	■	■	■
Power Side Windows (4)	■	■	■	■
Power Lock Group (5)	■	■	■	■
Illuminated entry system	•	•	•	•
Air conditioning	■	■	■	■

(1) Availability of All-Season Performance Radial tires for Tempo LX is delayed. See your Dealer for details. (2) Delayed availability on 4-door models. See your Dealer for details. (3) Includes ashtray, glove box, luggage compartment, engine compartment, dome and map lights and headlamps-on alert. (4) Not available on 2-door models. (5) Includes power door locks, remote-control fuel filler door and remote-control decklid release.

TEMPO SPECIAL VALUE PROGRAMS

The Special Value Programs include popular options at significant discounts. The GL and LX Special Value equipment packages are detailed below. See your dealer for details on the GL and LX Special Value Programs.



Special Value Tempo GL

Order Special Value Package 226A for Tempo GL and get the following equipment at substantial savings:

- Air conditioning
- Power lock group
- Dual electric remote control mirrors
- Tilt steering wheel

Special Value Tempo LX

Order Special Value Package 233A for Tempo LX and get the following equipment at substantial savings:

- Air conditioning
- Rear window defroster*
- Automatic transaxle

*Electronic AM/FM stereo search radio with cassette tape player and digital clock is an allowable substitution.

COLORS & TRIMS

Interior Trim Colors

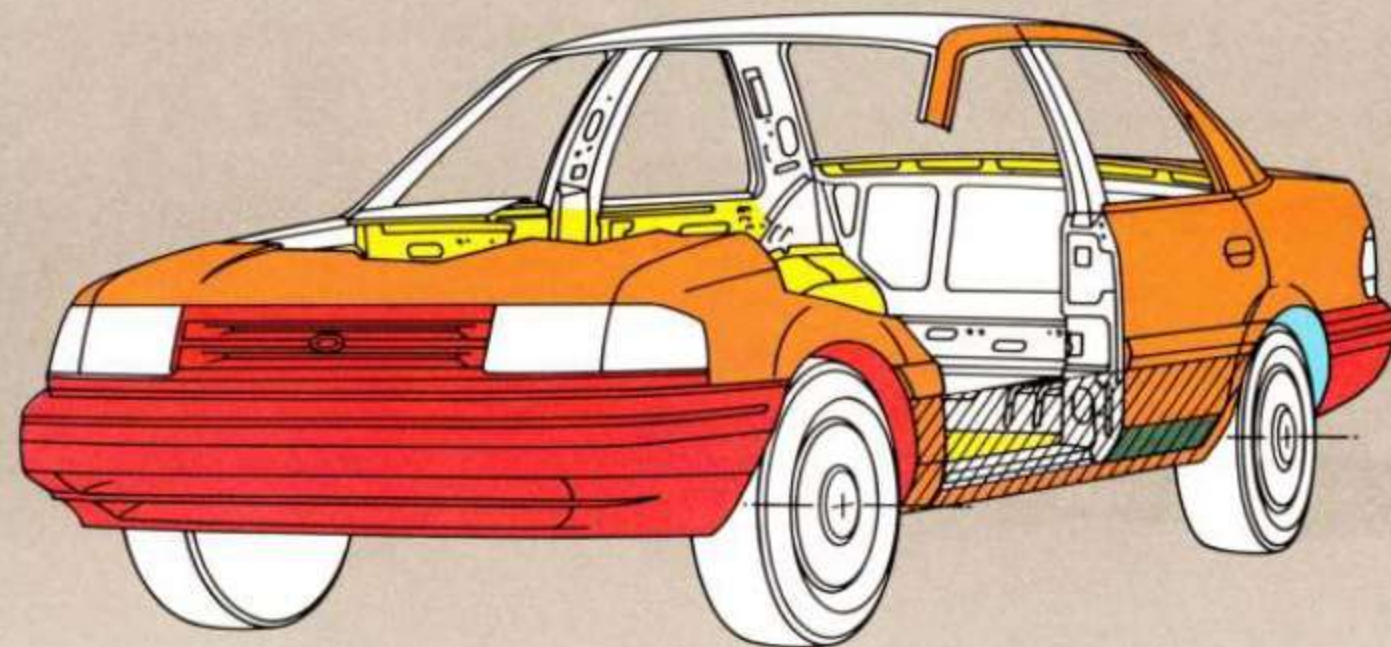
Regatta Blue	Scarlet Red	Medium Grey	Sand Beige	Exterior Colors
X	X	X		Black
X	X	X		Light Grey
X				Spinnaker Blue
		X		Sand Beige
X	X	X	X	Oxford White
	X	X		Scarlet Red
Optional Clearcoat Metallic Paint				
	X	X		Medium Red
		X		Light Sandalwood
X		X		Twilight Blue
X		X		Dark Shadow Blue
X	X	X		Silver
	X	X		Graphite
Tempo GLS Monotone Colors				
	X	X		Medium Red Clearcoat Metallic
				Silver Clearcoat Metallic
X	X	X		Dark Shadow Blue Clearcoat Metallic
X		X		Light Sandalwood Clearcoat Metallic
Tempo GLS Colors with Titanium Lower Accent Treatment				
	X	X	X	Black
	X	X		Light Grey
	X	X		Scarlet Red
X	X	X	X	Oxford White
			X	Light Sandalwood Clearcoat Metallic
	X	X		Graphite Clearcoat Metallic

Some of these paint and trim colors are shown in this catalog. On the printed page, of course, colors are at best only representative of the originals. Your Ford Dealer can show you actual samples of the paint colors and trim materials.



SAFETY AND OWNER BENEFITS

- Plastic
- Two-sided galvanized steel
- One-sided galvanized steel
- ▨ Urethane lower bodyside protection
- Corrosion protection wax
- PVC coating (underside only)

**Tempo 6-year/100,000-mile corrosion protection**

Tempo's corrosion warranty coverage for body panel rust-through is 6 years or 100,000 miles, whichever comes first. See your Ford Dealer for details and a copy of this limited warranty.



The optional Tot-Guard, available at your Ford Dealer.

Ford Motor Company strongly encourages all passengers to use their safety belts.

Ford urges the use of child and infant restraints. Ford's easy-to-install Tot-Guard (for children 20 to 50 pounds) and Infant Carrier (for children up to 20 pounds) are available at all Ford Dealers. If a child restraint requires a top-tether, Ford cars provide for attachment of an anchor at each rear outboard seating position.

**Ford Lifeguard Design Safety Features Vehicle operation**

- Split diagonal hydraulic brake system with warning light
- Corrosion-resistant brake lines
- Flash-to-pass headlamps
- Turn indicator with lane-changing signal feature
- Hazard warning flasher
- Backup lights
- Parking lights coupled with headlamps
- High-mount brake lamp
- Two-speed windshield wipers
- Windshield washers
- Outside rearview mirror, driver's side
- Glare-reduced instrument panel, windshield wiper arms and windshield pillars
- Uniform transaxle shift quadrant (on all cars equipped with automatic transaxle)
- Continuously variable control illumination intensity (instrument cluster lighting)
- Safety hood latch system
- Function-rated windshield defroster system
- Tamper-resistant (non-reversing) odometer
- Speedometer with highlighted 55 mph (on cars with analog speedometer)

Occupant protection

- Safety-designed front end structure
- Safety-designed roof structure
- Steel guard rails in side doors
- Safety-designed door hinges and double yoke safety door latches
- Automatic shoulder belt restraint system and manual front lap safety belts with retractors for occupants of front seats
- Safety belt fastening reminder light and chime for the driver's seat
- Lap belts with retractors for rear seat occupants
- Energy-absorbing

- steering column
- Energy-absorbing armrests and safety-designed door handles
- Energy-absorbing instrument panel with padding
- Energy-absorbing sun visors
- Energy-absorbing front seat back tops
- Self-locking seat back latches (2-door vehicles)
- Head restraints for front outboard occupants
- Safety glove box latch
- Inside yieldaway rearview mirror
- Impact-absorbing laminated safety glass windshield
- Flame-resistant interior materials
- Safety-designed coat hooks
- Safety-designed radio control knobs and push buttons
- Rear door child-proof locks (4-door vehicles)

Anti-theft

- Locking steering column with key chime (with "Park" interlock and push button for key release)
- Visible vehicle identification number

6-year/60,000-mile powertrain warranty

Ford's powertrain warranty covers all 1988 cars for 6 years or 60,000 miles whichever comes first. This limited warranty covers major powertrain components. Certain restrictions and deductible apply. Ask your dealer for a copy.

5-mile-per-hour bumpers

Bumper systems on Ford Tempo are designed to help protect lamps, cooling system, exhaust and other body components in the event of a minor impact. While some manufacturers equip their cars with bumpers that just meet the 2 1/2-mph federal standard, Ford equips Tempo and every other car it makes with bumpers designed to absorb impacts of 5-mph.

Scheduled maintenance

Here are some examples of scheduled maintenance intervals for the 1988 Tempo. For complete recommendations, refer to the Scheduled Maintenance and Record Log.

Engine oil and filter change	each 7,500 miles or 6 months
Spark plug change	each 30,000 miles
Air filter replacement	each 30,000 miles
Engine coolant replacement	each 30,000 miles or 3 years

Measurements*

	2-Dr/4-Dr
Wheelbase	99.9"
Length	176.5"
Height	52.7"/52.8"
Width	68.3"/66.8"
Front tread	54.9"
Rear tread	57.6"
Cargo volume (cu. ft.)	13.2/12.9
Fuel capacity (gal.)	15.4**
Curb weight (lb.)	2,536/2,585
Passengers	5

*Based on Motor Vehicle Manufacturers' Association specifications.
**14.2 gal. on All-Wheel-Drive.



Participating Ford Dealers offer the Lifetime Service Guarantee, which guarantees their customer-paid work on your Ford vehicle for as long as you own it. This means that the covered repair is paid for once—and never again. If it ever has to be fixed again, the repairing dealer will fix it free. Free parts. Free labor. Even if the car is kept a lifetime. It doesn't matter where it was purchased, or whether it's new or used; the work is still covered by the repairing dealer. Ask to see this limited warranty when you visit your participating Ford Dealer.



Optional Ford Extended Service Plans cover major components on new Ford cars and light trucks for longer than the vehicle's basic warranty. The cost of this added protection is so moderate that it could pay for itself the first time you need it. Your Ford Dealer has full details.



Genuine Ford and Motorcraft original equipment replacement parts meet the same high standards as those installed in production.



Ford Motor Credit Company is interested in helping to fill the transportation needs of every qualified buyer of a Ford product. A participating dealer can arrange financing terms or a Red Carpet Lease® tailored to your circumstances. Ford Credit has offices conveniently located throughout the United States.

Ford-paid repair programs after the warranty period

Sometimes Ford Motor Company offers adjustment programs to pay all or part of the cost of certain repairs. These programs are intended to assist owners and are in addition to the warranty or to required recalls.

Technical service bulletins

All vehicles need repairs during their lifetime. Sometimes Ford issues technical service bulletins (TSBs) and easy-to-read explanations describing unusual engine or transmission conditions which may lead to costly repairs, the recommended repairs, and new repair procedures. Often a repair now can prevent a more serious repair later.

For more information...

Ask Ford Motor Company or your Ford or Lincoln Mercury-Mercur Dealer about Ford-paid repair programs and/or TSBs relating to your vehicle.

To get copies of these materials for your vehicle or the vehicle of interest to you: Call Ford toll-free at 1-800-241-3673. Alaska/Hawaii call 1-800-241-3711 and in Georgia call 1-800-282-0959.

Or write Ford at:
Ford Customer
Information System
Post Office Box 95427
Atlanta, Georgia 30347

We'll need your name and address; year, make, model and vehicle identification number, as well as engine size.

Options availability

Options shown or described in this catalog are available at extra cost and may be offered only in combination with other options or subject to additional ordering requirements or limitations.

Product changes

Ford Division reserves the right to change product specifications at any time without incurring obligations.

"Ask your Ford Dealer"

Following publication of this catalog, certain changes in standard equipment, options, prices and the like, or product delays, may have occurred which would not be included in these pages. Your Ford Dealer is your best source for up-to-date information.

Buy or lease a new Ford Tempo

T

E

M

P

O

