

1987 FORD THUNDERBIRD





1987 Turbo Coupe: *Motor Trend* Car of the Year



For the second year in a row, *Motor Trend's* Car of the Year is a Ford. Ford Taurus took the honor for 1986. For 1987, we're proud to announce *Motor Trend's* selection of the Thunderbird Turbo Coupe!

Thunderbird for 1987

Those who consider driving to be one of life's pleasures are invited to see and drive the 1987 Thunderbirds. A refined front suspension gives the standard model an improved ride and exterior styling refinements enhance its aerodynamic shape. There's a new V-8-powered Thunderbird Sport. The LX model includes extensive comfort and convenience extras. And Thunderbird Turbo Coupe takes its place among the finest of the world's performance automobiles. The 1987 Thunderbirds await your inspection — at a Ford Dealer near you.

Best-built American cars six years running

"Quality is Job 1." In fact, for the past six consecutive years, Ford quality has led all other American car companies. This is based on an average of owner-reported problems in the first three months of service on '86 models, and in a six-month period on '81-'85 models designed and built in North America.

Left: Thunderbird LX in Black. Some equipment shown may be optional. See options list on page 19.

Thunderbird Turbo Coupe is equipped to be one of the most complete performance cars on the road today. Sophisticated handling componentry, Anti-lock brakes and high-technology power put the Thunder in this very special Thunderbird.

Thunderbird LX is for those who want a driver's car with an extra measure of comfort and convenience. The luxurious and well-appointed interior characterizes Thunderbird LX.

Thunderbird's efficient, sculpted form hints at the future and says that its owner is no stranger to the fun of driving.

Thunderbird Sport takes that driving fun a step further with V-8 power and a handling-oriented chassis.

Ford Thunderbird



Contents

Ford Thunderbird LX	4-5
Ford Thunderbird Interior	8-9
Ford Thunderbird Turbo Coupe	10-11
Standard Ford Thunderbird and Thunderbird Sport	12-13
Ford Thunderbird — The Technical Side	14-15
Preferred Equipment Packages	16-17
Features, Options and Colors	18-19
Safety and Owner Benefits	20-21



Left: Thunderbird LX in Dark Shadow Blue Clearcoat Metallic.

Below: Thunderbird LX in Driftwood Clearcoat Metallic.

Ford Thunderbird LX

Equipped for driving enjoyment

LX is for those who want Thunderbird driving enjoyment with an extra measure of luxury and convenience. On the outside are bodyside and decklid accent stripes, black electric remote-control mirrors, and styled road wheels. But what really sets the LX model apart is what's inside.

wipers are handy in light rain and drizzle. Systems sentry/diagnostic alert lights (page 9) alert you if something needs attention and the illuminated entry system provides extra security after dark. Power windows, power locks, an electronic digital clock and an automatic parking brake release are included. And a cassette tape player is added to the AM/FM stereo radio. LX takes your driving pleasure seriously.



A well-trimmed interior

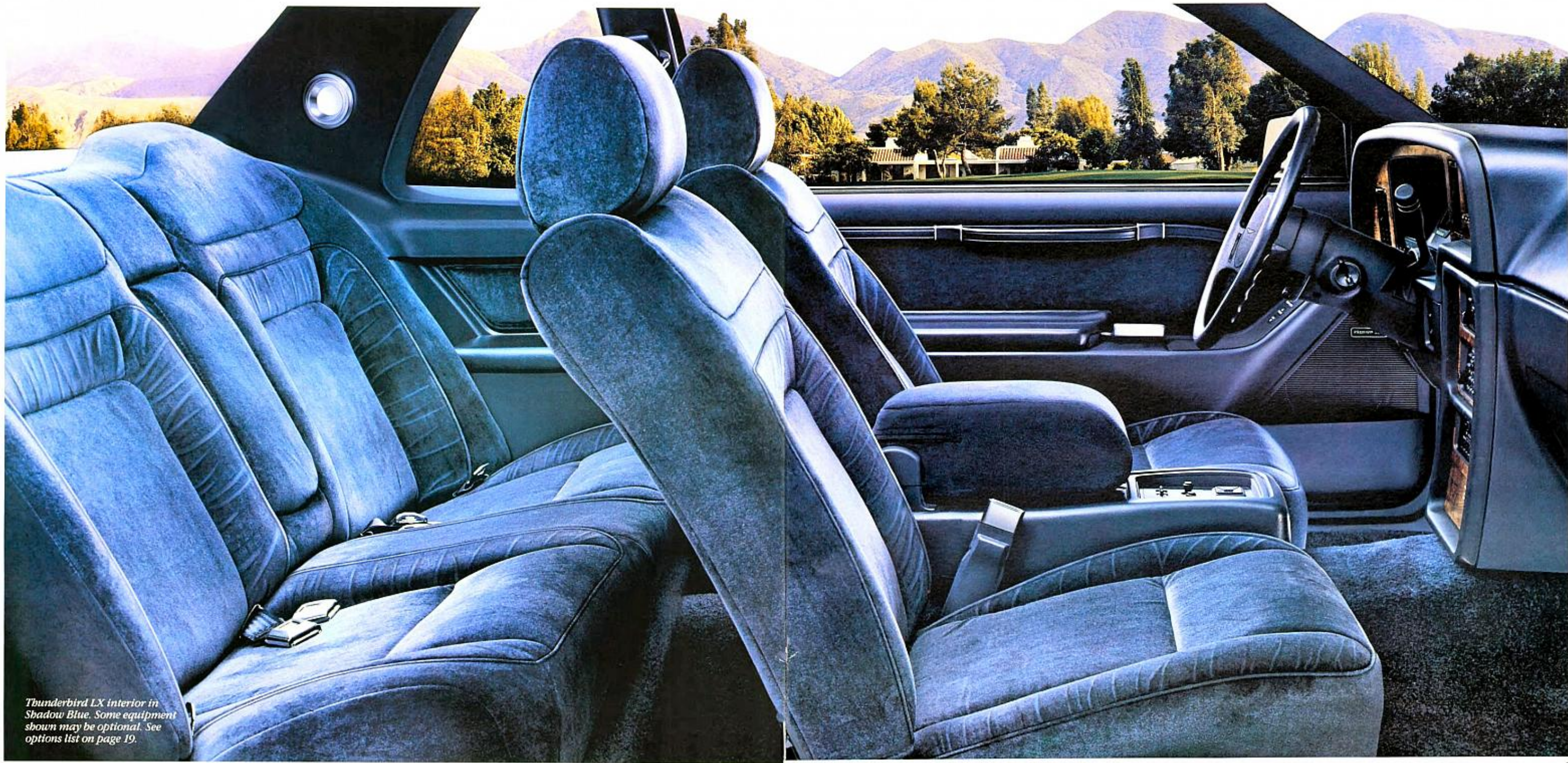
LX split bench seats are trimmed in luxury cloth and include head restraints that can be adjusted four ways. The tilt steering wheel is leather-wrapped and contains the speed control operation buttons. Luxury floor carpeting complements the specially finished LX door trim panels, which include courtesy lights. There are also courtesy lights in the instrument panel and quarter trim panels as well as a dual beam map light and an engine compartment light.

LX standard features

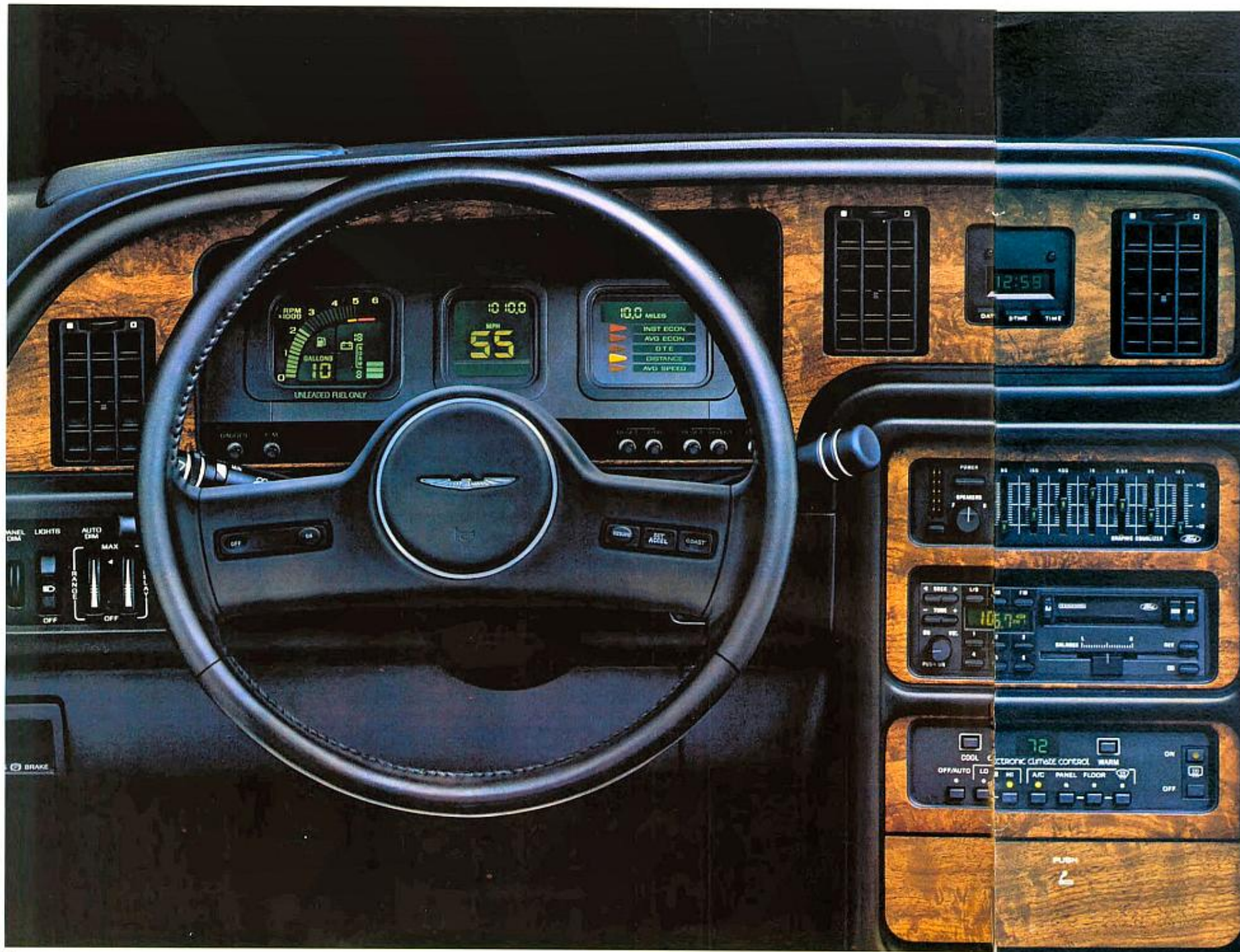
Thunderbird LX standard equipment helps make life a little easier on the road. Interval windshield

Some equipment shown may be optional. See options list on page 19.





Thunderbird LX interior in Shadow Blue. Some equipment shown may be optional. See options list on page 19.



Left: Optional electronic instrument cluster (standard with Sport) in Shadow Blue.

Below: Thunderbird's standard console and spacious deep-well trunk.

Some equipment shown may be optional. See options list on page 19.



A Well-Planned Environment

The science of ergonomics involves the relationship between a vehicle and its occupants. The best ergonomic design maximizes such factors as seating comfort, instrument/control placement, and visibility.

Ergonomically designed

In Thunderbird, applied ergonomics has created an environment with sensible, convenient positioning of seats, controls, instruments and lights. Turn signals, windshield wiper/washer controls and headlamp dimmer, for example, are mounted on the steering column at the driver's fingertips.

Thoughtful seat design

The individually reclining split bench seats also benefit from ergonomic design. They're body-contoured for comfortable back and thigh support with deep foam cushions supported by firm but flexible springs. The spacious rear seat can accommodate up to three passengers.

Available optionally are individual cloth seats with a full console. Adjustable articulated sport seats with full console are optional with Thunderbird LX.

Spacious deep-well trunk

Proper interior design should provide ample room for luggage as well as people. And Thunderbird does. The deep-well trunk offers close to 15 cubic feet of cargo room partly due to the upright, out-of-the-way storage of the mini-spare tire. And the low lift height makes loading and unloading easy.

Thunderbird instrumentation

The standard instrument panel features an electronic liquid crystal display (LCD) speedometer and combination odometer/trip odometer. Analog fuel and temperature gauges are accompanied by

lights for "fasten seat belts," "high beam" and "brake" (parking brake on). Also included are a service interval reminder, speed alert, positive shutoff air registers, side window demisters, and integral hood and parking brake release.

The electronic instrument cluster

The electronic instrument cluster (shown at left) is standard on Thunderbird Sport and optional on Thunderbird and Thunderbird LX as part of the Electronic Equipment Group. In addition to the standard instrumentation, it includes a liquid crystal tachometer display for rpm and allows the driver to select read-outs for temperature, oil pressure, volts or fuel. Fuel level is also displayed digitally and there's a "low fuel" flashing light.

Also included are systems sentry lights (standard with Turbo Coupe, LX and Sport). They are lighted when certain conditions need attention: "check oil," "low fuel," "low washer fluid," "low beam out," "taillamp out," "door ajar" and "headlamps on."

A 5-function liquid crystal display (LCD) trip computer supplies useful travel information and an electronic digital clock displays the date, time, or elapsed trip time.



Left: Thunderbird Turbo Coupe in Silver Clearcoat Metallic.

Right: Turbo Coupe Instrumentation in Raven/Charcoal.

Below: Turbo Coupe Interior in Raven/Charcoal. Some equipment shown may be optional. See options list on page 19.

Ford Thunderbird Turbo Coupe

The 1987 *Motor Trend* Car of the Year

Some automobiles referred to as "sporty" cars or "performance" cars offer items like racing stripes along the sides and imitation performance seats. White letters on the tires, perhaps. Little more. And that's enough for some people. But for others, for real driving enthusiasts, there is a wide gulf indeed between the trappings of performance and the vehicle selected as 1987 *Motor Trend* Car of the Year.

People who appreciate fine performance cars come from all walks of life, but they have one thing in common: they love the thrill and exhilaration of serious driving. For them, there is no such thing as just getting from point A to point B. For them, there is Turbo Coupe.

Consider the equipment

A 2.3 liter turbocharged, inter-

cooled engine. Electronic fuel injection. Four-wheel power disc brakes with a sophisticated Anti-lock brake system (ABS). A responsive automatic-ride-control suspension with rear quadra-shocks. Traction-Lok rear axle. Goodyear VR 60 performance tires on special 16" aluminum wheels.

around. Turbo Coupe's exterior hardware is designed to be functional, not merely ornamental.

Chances are if you've read this far you're the kind of performance person we mean. Read the Turbo Coupe equipment list on page 19. You may find cars with some of the features listed there, but it'll be



No-nonsense items. And they're discussed in more detail on pages 14-15.

Consider the interior

Turbo Coupe's articulated sport seats feature adjustable thigh supports and adjustable cushion bolsters. There's a power lumbar support that is infinitely adjustable and head restraints that adjust 4 ways. The entertainment system, an electronic AM/FM stereo radio, has to be heard to be appreciated. And there's full instrumentation, of course, including a turbo boost gauge and gauges for fuel, temperature, and oil pressure as well as an ammeter and automatic ride control indicator light.

Consider the exterior

Dual intercooler scoops on the hood. Hella® fog lamps on the front-end fascia and blackout accents all

tough to find a world-class touring car with all of them at Turbo Coupe's price. And by all means, take a test drive in the car that runs with the best in the world.

Turbo Coupe Special Value

A Special Value Program for Turbo Coupe makes it possible to get items like power driver's seat, speed control and electronic AM/FM stereo radio with cassette player at no extra charge when Preferred Equipment Package 157A is ordered. See page 17 for details.





Left: Thunderbird in Sandalwood Clearcoat Metallic.

Right: Thunderbird Sport in Medium Grey Clearcoat Metallic.

Below: Thunderbird Interior in Sand Beige. Some equipment shown may be optional. See options list on page 19.



Ford Thunderbird

In step with the times

Over the years, its name has brought to mind a special kind of car, one that makes a statement about the person who chooses it — a personal car. The 1987 Thunderbird carries on that tradition using the science and technology of the eighties. Its distinctive shape is a masterful blend of functional design and sleek style. It's in step with the times.

Thoroughly efficient

Thunderbird's dynamic shape uses the air around it to improve handling as well as fuel economy.* Even the dual halogen headlamps were designed with wind management in mind. It's equipped the way a driver's car should be, too. The 3.8 liter electronically fuel-injected V-6 engine and Automatic Overdrive transmission are a powerful but efficient team.

Roadworthy

The rack and pinion steering system and front disc/rear drum brakes are power assisted. And the gas-pressurized struts and shock absorbers, along with variable-rate springs, produce good ride characteristics over a variety of road conditions.

Thunderbird Sport

The driving force of the Thunderbird Sport is its powerful 5.0 liter V-8 engine. Its handling suspension, too, is something special. The quadra-shock arrangement in the rear gives Sport a "car on rails" feel through turns. Special P215HR70x14 speed-rated, BSW



Thoughtfully equipped

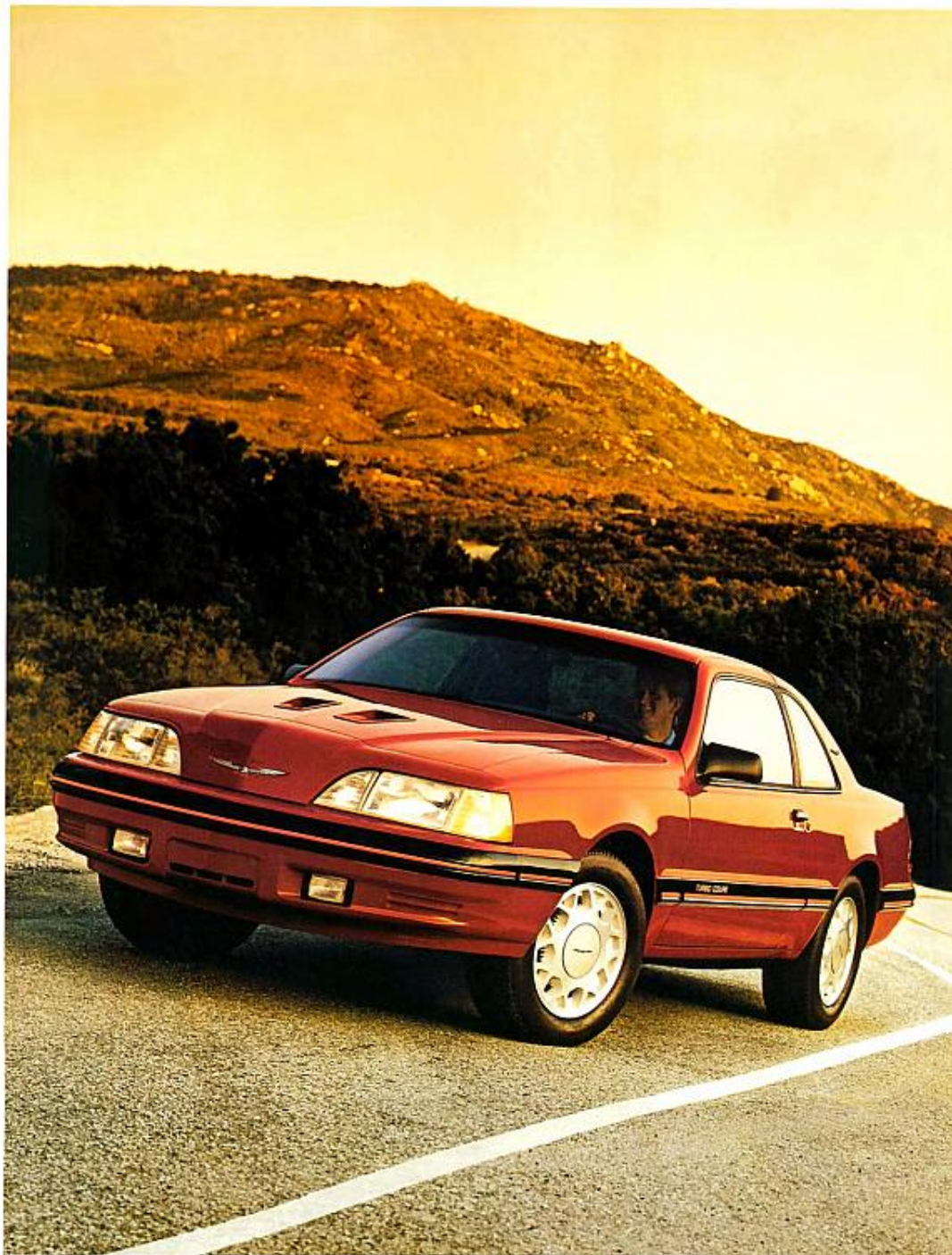
Inside, the reclining cloth split bench seats feature cloth-covered head restraints and a handy console. The speedometer and odometer/trip odometer have electronic LCD readouts for easy reading and analog fuel and temperature gauges are included. An electronic AM/FM stereo radio (may be deleted for credit) provides entertainment.

Air conditioning, tinted glass and a self-regulating quartz electric clock are among the many Thunderbird standard features (see page 19 for a comprehensive list). The right car for the times is one that looks to the future. See your Ford Dealer for a test drive today.

handling tires are also standard.

Black accents and styled road wheels define Sport's exterior. Interior highlights include the electronic instrument cluster (described on page 9), individual seats with full console, a floor-mounted shift lever for the Automatic Overdrive transmission, a dual-note, sport-tuned horn, an electronic digital clock and the Light Group (dual beam map light, instrument panel courtesy lights and engine compartment light). Thunderbird Sport is more than flair, it's a comfortable, capable performer — V-8 style.

*See Gas mileage, page 15.



Left: Turbo Coupe in Medium Red Clearcoat Metallic. Some equipment shown may be optional. See options list on page 19.

Right: Turbo Coupe's advanced Anti-lock brake system means enhanced stopping ability under adverse driving conditions. It's discussed in detail at right.

Thunderbird powerteams

Engine	Transmission	Axle Ratio
3.8L V-6	Automatic Overdrive	3.27
5.0L V-8	Automatic Overdrive	2.73
2.3L Turbo	5-Speed manual	3.55
2.3L Turbo	Automatic Overdrive	3.73

Ford Thunderbird—The Technical Side

The world-class performance of Turbo Coupe

Turbo Coupe is, without a doubt, the flagship of the Thunderbird fleet. Some of its more advanced features are described here. For more information on equipment, see page 11.

module monitors signals from speed, brake pressure and steering sensors as well as an acceleration signal from the EEC-IV engine control module. As it does, it adjusts the shock absorber damping automatically to provide the best ride/handling characteristics.

Shock damping is "soft" for a smooth ride or "firm" when extra handling is required. The "firm"

times per second, applying and releasing the brakes rapidly and repeatedly. This action allows the front wheels to simultaneously steer and brake, making it possible for the driver of a Turbo Coupe to maintain control under many circumstances that would normally mean a skid.

Anti-lock is applied to each front wheel independently, to the rear wheels as a pair, or to any combination of the three as the need arises.

running and easier starting. The Sport combines EFI with the power of the 5.0 liter V-8 engine.

The standard Automatic Overdrive transmission automatically shifts into an overdrive fourth gear when the vehicle exceeds approximately 45 mph. In overdrive, engine speed is reduced by about one-third. The result is improved highway fuel economy and reduced engine wear.

Shock absorbers designed to smooth the way

All Thunderbird struts and shock absorbers contain a low-pressure charge of inert nitrogen gas. The gas suppresses foaming of the hydraulic fluid due to rapid bumps or similar agitation. This means the ride is smooth under normal circumstances, yet firm enough for rough going.

A responsive suspension

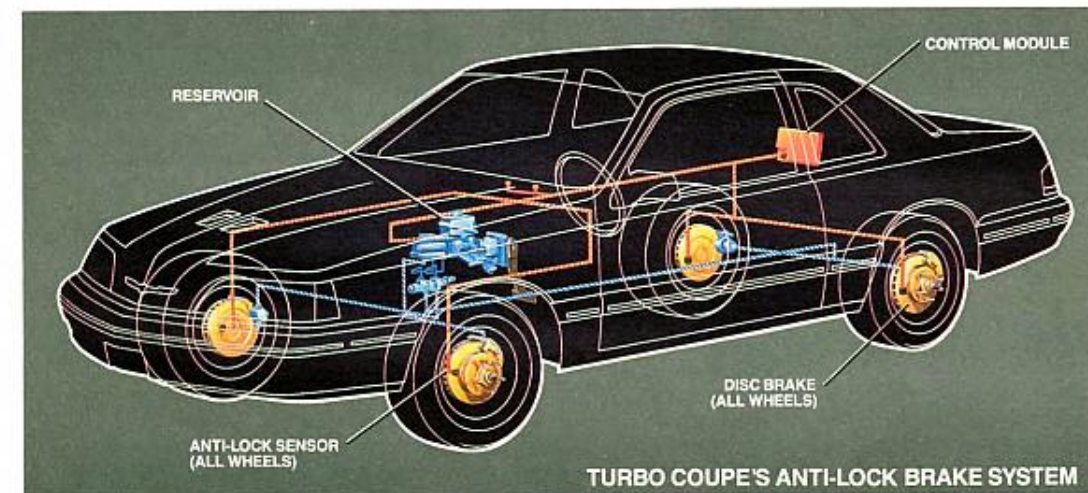
Thunderbird's modified MacPherson front suspension is combined with a 4-bar link configuration in the rear. Variable-rate springs have been added for improved overall stability, steering response and vehicle handling.

A special suspension for Thunderbird Sport

The Sport's handling suspension includes Quadra-Shocks in the rear (also standard on Turbo Coupe), four shock absorbers that soften and smooth the rear wheels' vertical travel caused by bumps, pavement breaks, potholes, etc., and help control rotation of the axle during acceleration.

EPA gas mileage estimates

Engine	Transmission	EPA Est. City	Est. Hwy.
3.8L V-6	AOD	19	26
5.0L V-8	AOD	18	27
2.3L Turbo	5-Speed manual	18	26
2.3L Turbo	AOD	18	23



Turbocharged, intercooled power

Turbo Coupe's engine is an efficient, cross-flow head, overhead-cam 4-cylinder. Though it displaces only 2.3 liters, through turbocharging and intercooling it delivers approximately 190 hp with the carefully matched standard 5-speed manual overdrive transmission, 150 hp with the optional Automatic Overdrive.

Automatic Ride Control

Automatic ride control means that Turbo Coupe's system control

mode can also be selected manually by the driver. It's a sophisticated interactive suspension found on very few production cars.

Enhanced stopping ability

Turbo Coupe's 4-wheel disc brakes include an Anti-lock system (above). During hard braking, one or more of the wheels may lock, reducing the ability of the driver to maintain control. In Turbo Coupe, an electronic sensor constantly monitors wheel rotation.

If lockup is sensed, solenoid valves open and close up to ten

Thunderbird: Advanced engineering in touch with today's driving demands

Standard EFI V-6 power and AOD

The standard Thunderbird and Thunderbird LX feature a 3.8 liter V-6 engine with electronic fuel injection. EFI provides several advantages over carbureted systems. The major one is a more efficient use of fuel. EFI offers improved overall operation, smooth



Preferred Equipment Packages

The Thunderbird pictured at left includes Preferred Equipment Package 151A. Thunderbird Preferred Equipment Packages include combinations of options that have proved popular with many car buyers, usually at a substantial savings from the price of the same options purchased separately. You get a well-equipped car at an attractive price.

Selecting your automobile

Preferred Equipment Packages benefit you in two important ways: (1) They can save you money. (2) They simplify the ordering procedure.

Here's how it works: Choose Thunderbird, Thunderbird Sport or Turbo Coupe from the chart at right. Or choose one of the two Preferred Equipment Packages offered with LX. The entire ordering procedure is greatly simplified.

Individual features and options are listed on page 19. Contents of Preferred Equipment Packages are subject to change. For the latest information, consult your Ford Dealer.

An Easy Way To Buy

Thunderbird

	Thunderbird 151A	Thunderbird Sport 154A	LX 161A	Select LX 162A	Turbo Coupe 157A
Rear window defroster (1)	•	•	•	•	•
Electronic digital clock	•	•	•	•	•
Interval wipers	•	•	•	•	•
Light Group	•	•	•	•	•
Power Lock Group	•	•	•	•	•
Dual electric remote-control mirrors	•	•	•	•	•
Electronic AM/FM stereo radio with cassette tape player	•	•	•	•	•
Speed control	•	•	•	•	•
Power driver's seat	•	•	•	•	•
Tilt steering wheel	•	•	•	•	•
Power side windows	•	•	•	•	•
Bodyside and decklid stripes	•	•	•	•	•
Stylish road wheels	•	•	•	•	•
Premium Luxury Package:					
Heavy-duty battery	•	•	•	•	•
Electronic Equipment Group (2)	•	•	•	•	•
Front floor mats/luggage compartment mat	•	•	•	•	•
Luxury Light/Convenience Group (2)	•	•	•	•	•
Power antenna	•	•	•	•	•
Dual power seats with power recliners (3)	•	•	•	•	•

(1) Premium Sound System or graphic equalizer may be substituted (except when Electronic Equipment Group is ordered). (2) Detailed on page 16. (3) Power recliners are not included with optional articulated sport seats on LX.

The Thunderbird Turbo Coupe Special Value Program makes taking advantage of Turbo Coupe's Preferred Equipment Package 157A especially attractive. When you purchase the package without deletions, you get six of the items at no extra charge. When you consider the price of these items purchased separately, it's quite a value! Increase your enjoyment of *Motor Trend's* 1987 Car of the Year with the Special Value Program.

Thunderbird Turbo Coupe Special Value Program

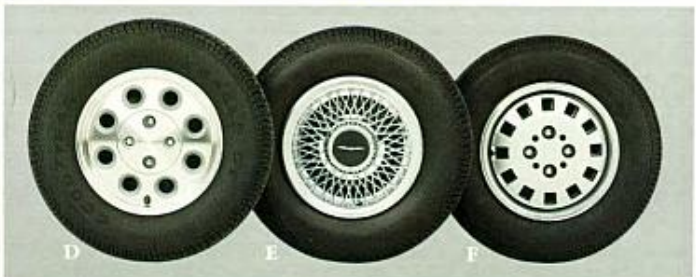
The following items are included at no extra charge when Preferred Equipment Package 157A is ordered without deletions.

• Power Lock Group	• Tilt steering wheel
• Electronic AM/FM stereo radio with cassette tape player	• Power driver's seat
• Speed control	• Rear window defroster (1)

(1) Premium Sound System or graphic equalizer may be substituted. Additions to packages are allowed. If individual items are deleted, the Special Value Program discount does not apply.

Well-Equipped Cars and Personalized Options

Illustrated options: (A) Electronic AM/FM stereo radio with cassette tape player and 7-band graphic equalizer (Note: Appearance of the radio may change) (B) Power moonroof (C) Electric rear window defroster (D) Cast aluminum wheels (E) Locking wire-style wheel covers (F) Styled road wheels (standard with Sport and LX) (G) Tot-Guard (for children 20-50 pounds, available at your Ford Dealer)



Notable standard features and options for each Thunderbird series are listed on the facing page. Before selecting options, check the Preferred Equipment Packages on page 17. You're likely to find that most of the equipment you want has already been conveniently included for you in a particular package. Options and their availability are subject to change during the year. Your Ford Dealer can advise you of current status.

The Electronic Equipment Group

Includes the Electronic Instrument Cluster (described on page 9), electronic climate control air conditioning and the Keyless Entry System. The Keyless Entry System includes five small calculator-type pushbuttons in the upper driver's door which act as the key. When depressed in the proper coded sequence, doors are locked or unlocked (and decklid unlocked) automatically. The code can be changed by the owner at any time. This option includes the Illuminated Entry System, which lights the vehicle's interior and door lock cylinders when either door handle is raised.

The Luxury Light/Convenience Group

Includes cornering lamps, dual illuminated visor mirrors, the Illuminated Entry System and the Autolamp System. The Autolamp System automatically turns headlamps on at dusk and off at daybreak. The "auto dim" feature maintains low beam in traffic or lighted areas, then switches to high beam when conditions permit. In addition, headlamp turnoff may be delayed for up to four minutes to light your way into the house.

Thunderbird Features and Options

	● = Standard	■ = Optional				
	Thunderbird Standard	Sport	LX	Turbo Coupe		
ENGINEERING						
3.8 liter V-6 engine with electronic fuel injection	●	●	●	●		
5.0 liter EFI V-8 engine	■	●	■	●		
Automatic Overdrive transmission	●	●	●	●	■	
Improved 2.3 liter OHC turbocharged engine with EFI, air-to-air intercooler and regular/premium fuel selection	●	●	●	●		
5-speed manual overdrive transmission	●	●	●	●		
Power rack and pinion steering	●	●	●	●		
Power front disc/rear drum brakes	●	●	●	●		
Power 4-wheel disc brakes with electronic Anti-lock system (ABS)	●	●	●	●		
Modified MacPherson strut front suspension with variable-rate springs and gas-pressurized struts	●	●	●	●		
Four-bar link rear suspension with variable-rate springs and gas-pressurized shock absorbers	●	●	●	●		
Handling suspension including Quadra-Shock rear suspension	●	●	●	●		
Special handling package including automatic ride control and Quadra-Shock rear suspension	●	●	●	●		
Heavy-duty battery	■	●	■	●		
Traction-Lok axle	●	●	●	●		
Remote-control fuel door release (1)	●	●	●	●		
Dual-note, sport-tuned horn	●	●	●	●		
Automatic parking brake release	●	●	●	●		
P215/70R14 BSW all-season tires	●	●	●	●		
P215HR/70x14 speed-rated handling tires	●	●	●	●		
P225/60VR16 BSW performance tires and unique aluminum wheels	●	●	●	●		
EXTERIOR						
Dual aerodynamic halogen headlamps	●	●	●	●	●	
Wide bodyside moldings	●	●	●	●	●	
Luxury wheel covers	●	●	●	●	●	
Styled road wheels	■	●	■	●	●	
16"x7" aluminum wheels	●	●	●	●	●	
Cast aluminum wheels	■	■	■	■	■	
Locking wire-style wheel covers	■	■	■	■	■	
Unique front fascia with Hella® fog lamps	●	●	●	●	●	
Bodyside and decklid accent stripes	■	■	■	■	■	
Sport bodyside and decklid stripe	●	●	●	●	●	
Bright windshield, side window and backlite moldings	●	●	●	●	●	
Black bumper rub strips and extensions with bright insert (red insert with Turbo Coupe)	●	●	●	●	●	
Black accents and moldings	●	●	●	●	●	
Two-Tone paint with tape stripes	■	■	■	■	■	
Dual inter cooler hood scoops	●	●	●	●	●	
Left-hand remote-control mirror	●	●	●	●	●	
Dual remote-control electric mirrors	■	■	■	■	■	
INTERIOR						
Reclining cloth split bench seats with console (vinyl optional)	●	●	●	●	●	
Individual cloth seats with full console	■	●	■	●	■	
Luxury cloth split bench seats in special sew style	●	●	●	●	●	
Adjustable articulated sport seats	●	●	●	●	■	●
Leather seating surfaces	●	●	●	●	■	■
Air conditioning	●	●	●	●	●	
Tinted glass	●	●	●	●	●	
Safety belt reminder chime	●	●	●	●	●	
Deep-well trunk with mini-spare tire	●	●	●	●	●	
Luggage compartment light	●	●	●	●	●	
16-ounce color-keyed cut-pile carpet	●	●	●	●	●	
24-ounce luxury carpet	●	●	●	●	●	

	Thunderbird	Sport	LX	Turbo Coupe
Quartz electric clock	•	•	•	•
Electronic digital clock	•	•	•	•
Ashtray lights	•	•	•	•
Light Group (2)	•	•	•	•
Luxury door and quarter trim panels	•	•	•	•
Continuous color-keyed deluxe safety belts with comfort regulator feature	•	•	•	•
LCD speedometer/odometer/trip odometer	•	•	•	•
Electronic instrument cluster (See page 9)(3)	•	•	•	•
Systems sentry/diagnostic alert lights (See page 9)(3)	•	•	•	•
Full analog instrumentation, including tachometer with boost and overboost lights	•	•	•	•
Leather-wrapped steering wheel	•	•	•	•
"Soft feel" steering wheel	•	•	•	•
Tunnel-mounted shift with leather-wrapped handle and boot	•	•	•	•
Full console with covered storage compartment lid/armrest (4)	•	•	•	•
Electronic AM/FM stereo radio with 4 speakers (may be deleted for credit)	•	•	•	•
Electronic AM/FM stereo radio with 4 speakers and cassette tape player (5)	•	•	•	•
Premium Sound System (6)	•	•	•	•
Graphic equalizer	•	•	•	•
Illuminated Entry System	•	•	•	•
Power side windows	•	•	•	•
Interval windshield wipers	•	•	•	•
Speed control (5)	•	•	•	•
Tilt steering wheel (5)	•	•	•	•
Power Lock Group (5) (7)	•	•	•	•
Power driver's seat (5)	•	•	•	•
Power Moonroof	•	•	•	•
Premium Luxury Package Includes:				
Power antenna	•	•	•	•
Luxury Light/Convenience Group (8)	•	•	•	•
Electronic Equipment Group (9)	•	•	•	•
Dual power seats (10)	•	•	•	•
Front floor mats/luggage compartment mat	•	•	•	•

(1) Available optionally as part of Power Lock Group. (2) Includes dual beam map light, instrument panel courtesy lights and engine compartment light. (3) Available optionally as part of the Electronic Equipment Group. (4) Included with individual seats on standard model and with articulated sport seats on LX. (5) Included at no charge in Thunderbird Turbo Coupe Special Value Program. (6) Includes 6 premium speakers and a 4 channel amplifier that increases power from 20 to 80 watts. Included with graphic equalizer. (7) Includes power door locks, remote-control decklid release in glove box, remote-control fuel filler door release in glove box (standard with Turbo Coupe). (8) Includes cornering lamps, dual illuminated visor vanity mirrors (standard with LX), the illuminated entry system (standard with LX and available as a separate option), and the autolamp system (see page 18). (9) Includes Electronic Instrument Cluster, described on page 9 (except Turbo Coupe: standard on Sport). Keyless Entry System (described on page 18), electronic climate control air conditioning and rear window defroster. (10) Includes dual power recliners except on Turbo Coupe and optional articulated sport seats on LX.

Black	Scarlet Red	Light Grey	Sand Beige	Oxford White
Silver Clearcoat Metallic	Medium Grey Clearcoat Metallic	Medium Red Clearcoat Metallic	Silver Blue Clearcoat Metallic	Dark Taupe Clearcoat Metallic
Light Taupe Clearcoat Metallic	Dark Shadow Blue Clearcoat Metallic	Driftwood Clearcoat Metallic	Sandalwood Clearcoat Metallic	

Colors & Trims

Interior Trim Colors					Thunderbird, Sport, and LX Exterior Paint Colors
Shadow Blue	Scarlet Red	Taupe	Medium Grey	Rose/Charcoal Sand Beige	
X	X	X	X	X	Black
X	X	X	X		Light Grey
X	X	X	X		Scarlet Red
			X	X	Sand Beige
X	X	X	X	X	Oxford White
Thunderbird, Sport, and LX Optional Clearcoat Metallic Colors					
X	X	X	X		Silver
X	X	X	X		Medium Grey
X	X	X	X		Medium Red
X			X		Silver Blue
	X				Dark Taupe
		X			Light Taupe
X		X	X		Dark Shadow Blue
			X	X	Driftwood
			X		Sandalwood
Turbo Coupe Colors					
	X		X	X	Black
X	X		X	X	Oxford White
Turbo Coupe Optional Clearcoat Metallic Colors					
X	X		X		Silver
X	X		X		Medium Grey
X	X		X		Medium Red
X			X		Silver Blue
X			X		Dark Shadow Blue
		X	X		Driftwood

Some of these paint and trim colors are shown in this catalog. On the printed page, of course, colors are at best only representative of the originals. Your Ford Dealer can show you actual samples of the paint colors and trim materials presented above as well as two-tone paint combinations.

Buy or lease a new Ford Thunderbird

