

Better Ideas for the 80s.



1980
THUNDERBIRD
FORD LTD • GRANADA
FAIRMONT • FUTURA
MUSTANG • PINTO
FIESTA

FORD THUNDERBIRD

Spread your wings.

There have been many exciting, innovative Thunderbirds over the past 25 years, and the 1980 model is destined to be another. A new Thunderbird, yet so in keeping with the Thunderbird tradition. It's designed for today's driving requirements, with a *new size*.

Who said man was not meant to fly? Certainly no one who has become even casually acquainted with this new Thunderbird of 1980. Because here is all the exhilaration of flight without leaving the ground. Thunderbird lets you take wing as in no ordinary automobile.

High on the list of Thunderbird Better Ideas for the 80's is the optional Automatic Overdrive. At about 40 mph in "D" (Drive), it automatically shifts into a fourth overdrive gear. This causes the optional 5.0 liter engine to turn more slowly for improved highway fuel economy.* A Ford innovation. (See D and page 4.)

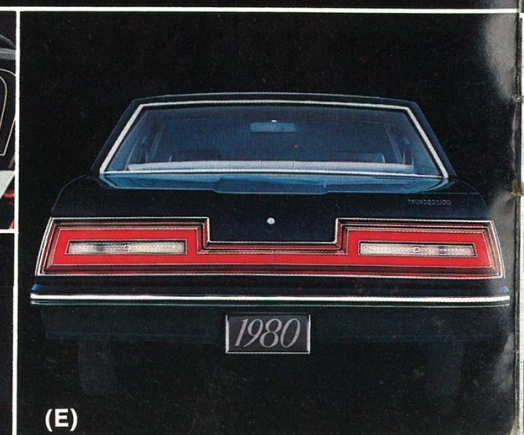
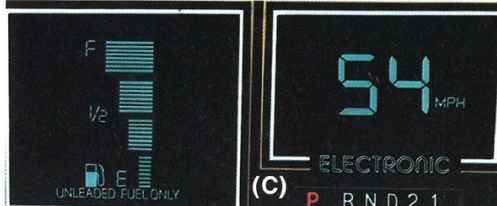
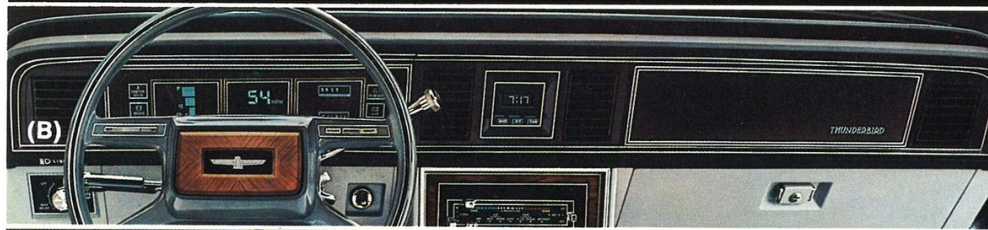
Among its engineering advancements is the new 4.2 liter (255 CID) standard V-8 which, while it packs plenty of power, is smaller and better suited to today's driving needs. Electronic advancements like the new Electronic Instrument Cluster (see B and C, next page) are also available.

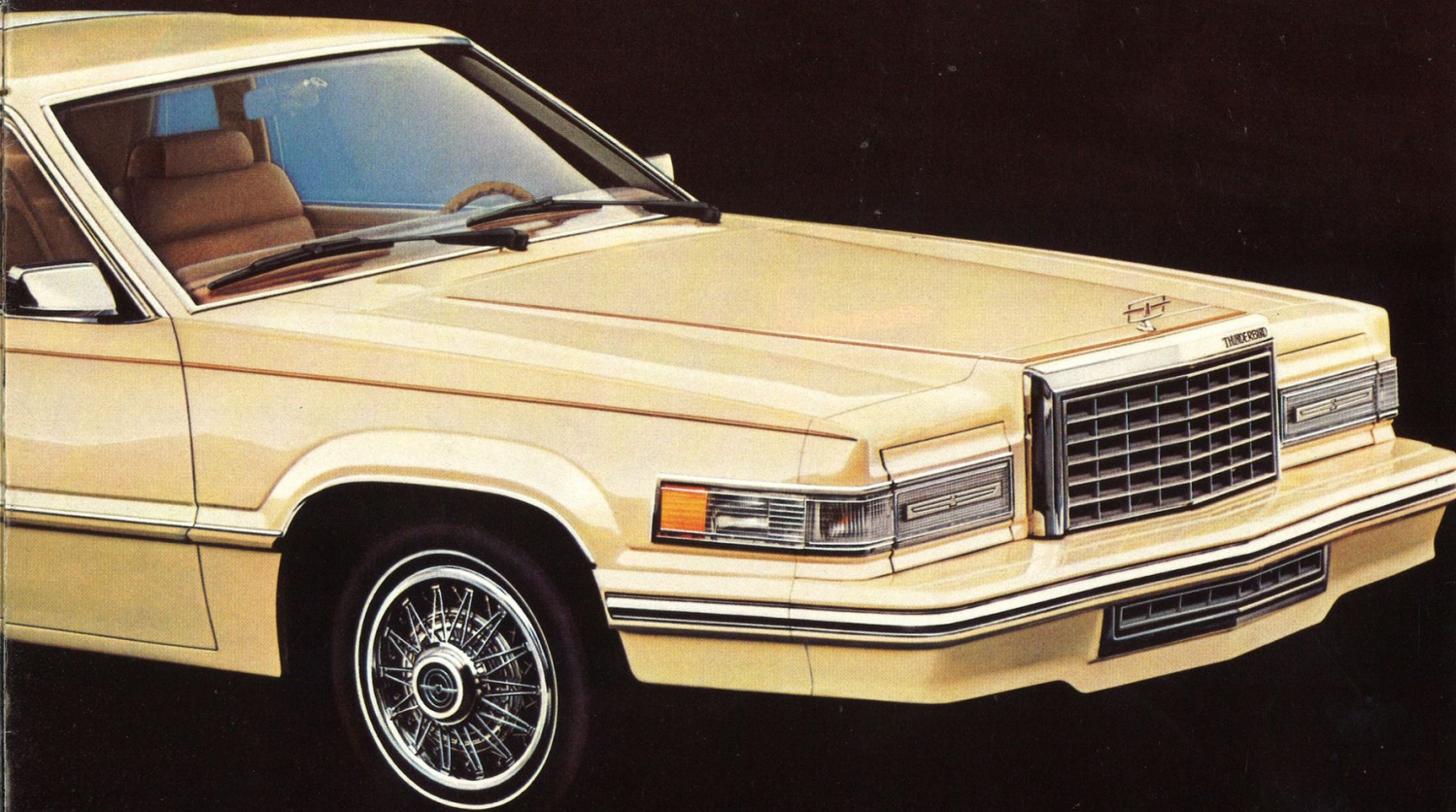
As in the past, this new Thunderbird comes beautifully equipped (see page 11 for Notable Standard Features). The contemporary design is for today and tomorrow without sacrificing traditional Thunderbird luxury. As for comfort, there is actually much more leg and knee room in the back seat than last year. And there's a larger deep-well trunk—nearly 18 cubic feet of space (with standard mini spare)!

Again, in the great Thunderbird tradition, there is an exciting array of options, several of which are inspirations of the space age. In all, you have some 60 options to choose from, including *three* new electronic AM/FM stereo search radios. And speaking of electronics, there's a new Keyless Entry System option. Ask your Ford Dealer for a demonstration.



(A) Thunderbird with Exterior Luxury Group





(A) Exterior Luxury Group gives Thunderbird a dramatic new look with its padded rear half vinyl roof and opera windows. Car color is Pastel Sand (6D) with matching vinyl roof.

(B) Electronic Instrument Cluster. Ford innovation is clearly evident in this space-age option, which takes full advantage of modern electronic wizardry. Also available are distinctive Diagnostic Warning Lights (not shown), situated prominently across the upper tier of the instrument panel.

(C) Electronic "Bar Graph" Fuel Gauge and Digital Speedometer (two features of the Electronic Instrument Cluster option, above). Bar graph segments in the fuel gauge, lighted with clearly contrasted intensity, register the level of fuel in the tank more precisely to the eye than any needle-type gauge. The speedometer features a large numerical readout.

(D) Automatic Overdrive Transmission. A fully automatic transmission with overdrive benefits for highway fuel economy.* Optional on Thunderbird and Ford LTD. Available with optional 5.0 liter (302 CID) 2V V-8 engine with Thunderbird (see pages 2 and 4 for more details).

(E) Thunderbird's Traditional Taillamp Treatment. Full-width, wraparound taillamps with distinctive emblems say "Thunderbird" to all.

(F) Thunderbird Town Landau Interior lets you "fly" in the finest style. Standard features include these split bench seats, shown with optional leather seating surfaces in Dove Grey (KS).

(G) Thunderbird with Exterior Decor Group. Another distinctive styling choice featuring a rear half vinyl roof and large quarter windows. Shown in Black (1C) with matching vinyl roof.

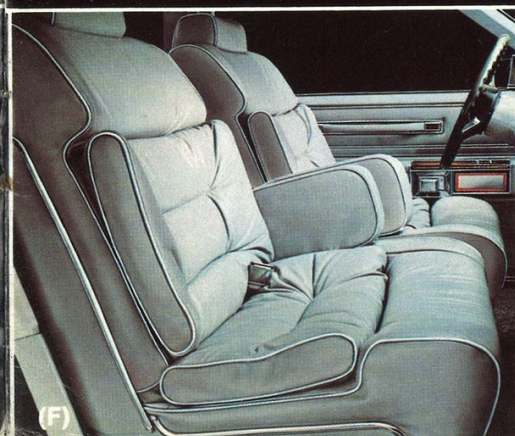
BETTER IDEAS FOR THE 80's—THUNDERBIRD.

■ New, more efficient size ■ Automatic Overdrive Transmission ■ New 4.2 liter (255 CID) V-8 engine ■ More rear seat knee and leg room ■ Many new electronic features, including Electronic Instrument Cluster ■ Deep-well trunk ■ Choice of two roof profiles ■ New Corrosion Warranty

Note: See Notable Standard Features, Measurements and color code reference on page 11.

Some items shown are optional. See the 1980 Thunderbird catalog for options list plus more complete details on the new Thunderbird.

*See mileage statement on page 11.



FORD LTD

As quiet as a Rolls-Royce.

Ford LTD for 1980 keeps some pretty impressive company. In Ford tests, a 1980 Ford LTD 4-Door Sedan rode as quietly as a Rolls-Royce Silver Shadow 4-Door Sedan!

And this year's LTD's have some very important new engineering features, new styling treatments and new model choices.

There's a new top-of-the-line series—the Ford LTD Crown Victoria 2- or 4-Door models. With a new, distinctive padded rear half vinyl roof.

There's a restyled LTD series. And there's a new low-priced LTD S series.

Standard on all are a 5.0 liter (302 CID) VV V-8, SelectShift automatic transmission, power steering, power brakes, and more (see page 11). Heading a long list of Better Ideas is the new Automatic Overdrive Transmission (see B, below, and pages 2-3).

(A) LTD 4-Door Sedan. Distinctive new front end styling for 1980. In Tu-Tone Silver Metallic (1G) over Medium Grey Metallic (1P).

(B) New Automatic Overdrive Transmission. An innovative Ford option, this new transmission has a fourth overdrive gear with a direct mechanical lockup for greater efficiency and improved highway fuel economy.* This Better Idea for the 80's is an option on both Ford LTD and Thunderbird (available with optional 5.0 liter [302 CID] 2V V-8 engine on Thunderbird).

(C) LTD Interior Luxury. In Dark Red velour cloth trim (MD).

(D) LTD Crown Victoria 2-Door Sedan. The top-of-the-line LTD. Shown in Tu-Tone Midnight Blue Metallic (3L) over Polar White (9D).

BETTER IDEAS FOR THE 80's— LTD.

- Quiet LTD ride ■ Automatic Overdrive Transmission ■ Economical full-size car
- Full 6-passenger roominess ■ Deep-well trunk ■ New Corrosion Warranty

Note: See Notable Standard Features, Measurements and color code reference on page 11.

Some items shown are optional. See the 1980 Ford LTD catalog for full details.

*See mileage statement on page 11.



(A) LTD 4-Door Sedan with Tu-Tone



(B)



(C)



(D)

FORD GRANADA

The story of a modern American classic.

Quietly and without fanfare, Ford's trim 5-passenger Granada has attracted well over 1,000,000 owners since its introduction in 1974.

From the beginning, Granada has been known for its clean styling and unusual elegance. And practical Granada virtues like affordability. Low maintenance (see page 11). Good fuel economy.*

For 1980, there are three series of 2- and 4-door sedans, in all. Standard is an economical 4.1 liter (250 CID) 1V "I" 6-cylinder engine, with 4-speed manual overdrive transmission (except in California) for greater efficiency and improved highway fuel economy.* For more standard features, see page 11. Options include new electronic stereo search radios (see D, below) plus illuminated entry system and others not usually offered on cars in Granada's class.

1980 Granada—a classic for modern America.

(A) Granada Ghia 4-Door Sedan. In Tu-Tone Dark Chamois Metallic (8A), Chamois Glow (8W).

(B) The Rich Look of a Classic. In Red (MD). Optional leather seating surfaces and the look of a luxurious European touring car.

(C) Granada ESS 2-Door Sedan. For thousands less than what you could spend for some European cars. In Pastel Sand (6D).

(D) Electronic AM/FM Stereo Search Radio, Cassette Tape with Dolby® Noise Reduction System—one of three such Better Idea options which offers search and scan features plus an electronic "memory" for your favorite stations.

BETTER IDEAS FOR THE 80's—GRANADA.

- Classic Granada styling ■ 4-speed manual overdrive transmission ■ Electronic AM/FM stereo search radios
- Mini spare tire ■ New Corrosion Warranty

Note: See Notable Standard Features, Measurements and color code reference on page 11.

Some items shown are optional. See the 1980 Ford Granada catalog for full details.

*See mileage statement on page 11.



(A) Granada Ghia 4-Door Sedan with Tu-Tone



(B)



(C)



(D)

FORD FAIRMONT

Engineered for 1980 and beyond.

Fairmont's popularity across America speaks well for what this practical mid-size car offers. In stylish 2-door and 4-door sedans, family-size 4-door station wagon and sporty Futura Coupe (next page).

Fairmont is designed to be efficient—space efficient, fuel efficient, cost efficient. Trim on the outside, seats five comfortably.

The standard 2.3 liter overhead cam engine with 4-speed manual transmission delivers excellent fuel economy.* And there's a new option—the 2.3 liter 4-cylinder turbocharged engine—with extra acceleration for passing and freeway merging (see pages 7 and 8).

Best of all, Fairmont is so very affordable. Especially in view of all the standard features you get (see page 11).

Test-drive a new Fairmont at your Ford Dealer today. Discover a car that's engineered for efficiency for 1980 and beyond.

(A) Fairmont 4-Door Ghia. Tu-Tone Silver Metallic (1G) over Black (1C). Luxurious.

(B) 2.3 Liter OHC 4-Cylinder Engine. Together with the standard 4-speed manual transmission, the 2.3 liter engine gives Fairmont its excellent fuel economy rating.* It's a Better Idea for the 80's.

(C) Fairmont Interior Richness. New luxury velour cloth trim in Medium Red (YD).

(D) Fairmont Squire in Pastel Sand (6D). Rich woodtone paneling distinguishes this roomy 4-door wagon.

BETTER IDEAS FOR THE 80's— FAIRMONT.

- Engineered for the 80's ■ 2.3 liter OHC engine and 4-speed manual transmission
- Excellent fuel economy* ■ 2.3 liter turbocharged engine ■ 4.2 liter (255 CID) V-8 engine ■ P-metric radial ply tires
- Modified MacPherson strut suspension
- New Corrosion Warranty

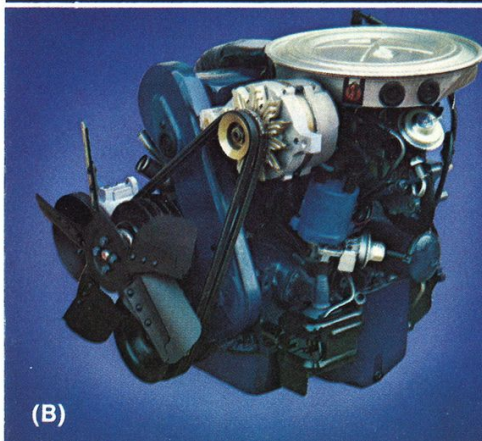
Note: See Notable Standard Features, Measurements and color code reference on page 11.

Some items shown are optional. See the 1980 Ford Fairmont catalog for full details.

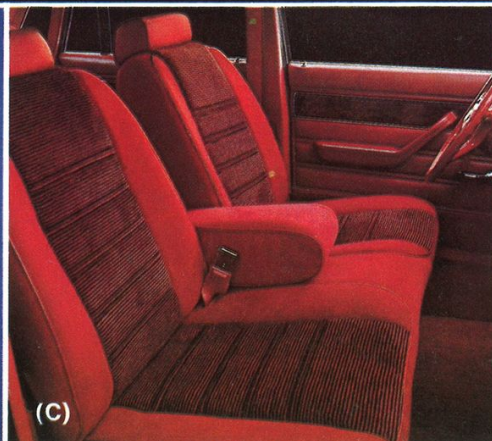
*See mileage statement on page 11.



(A) Fairmont 4-Door Ghia



(B)



(C)



(D)

FORD

FAIRMONT FUTURA

Drive tomorrow today.

Fairmont Futura offers you a personal car for today with a lot of tomorrow in it.

Here's a sporty coupe that combines sleek, aerodynamic styling with room for five passengers. The comfortable interior is smartly styled, and there's a good-sized trunk.

The 2.3 liter overhead cam 4-cylinder engine with 4-speed manual transmission is Futura's standard power team. It provides excellent fuel economy.* And this year, if you want greater reserve power, there's an optional 2.3 liter turbocharged engine (see C, below, and page 8). Plus a new 4.2 liter (255 CID) 2V V-8 option with plenty of power.

In Futura, you have a level of standard features you'd expect in a more expensive car (see page 11). And there's a great range of options, including: five radios, speed control, flip-up open air roof, and many more.

(A) Futura Ghia with Turbo. In Tu-Tone Silver Metallic (1G) over Black (1C). Luxurious interior appointments surround you in comfort.

(B) Futura Instrument Panel complements the sporty look of the interior.

(C) 2.3 Liter Turbocharged 4-Cylinder Engine delivers extra acceleration, reserve power you can use for passing or freeway merging. The turbocharger is basically an air compressor driven by recycled exhaust gases. This simple principle produces great acceleration. (See B, page 8.)

(D) Futura with Sport Group. This Better Idea features a dramatic over-the-roof accent stripe, shown in Candyapple Red.

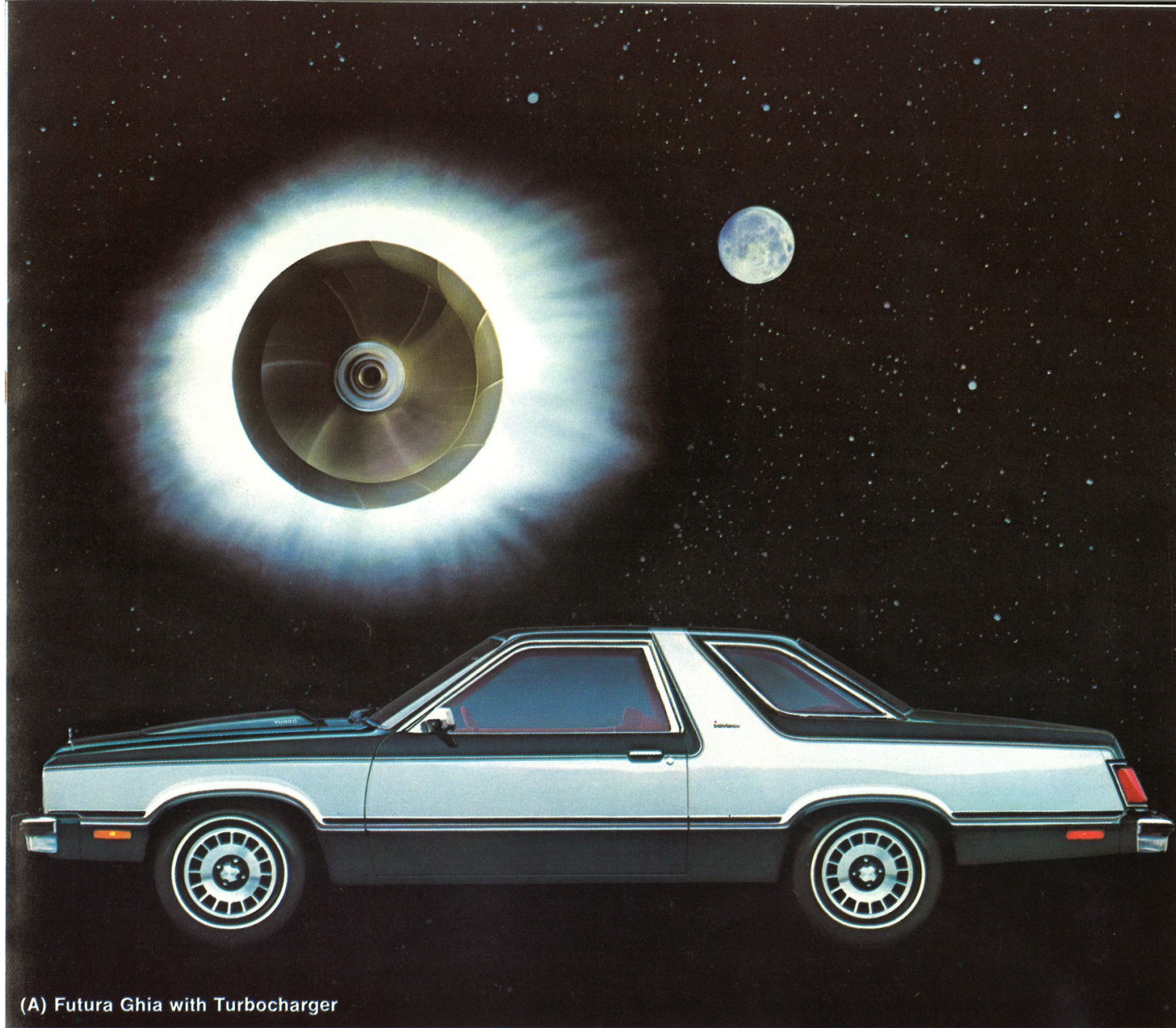
BETTER IDEAS FOR THE 80's—FUTURA.

- 2.3 liter OHC engine and 4-speed manual transmission
- Excellent fuel economy*
- 2.3 liter turbocharged engine
- 4.2 liter (255 CID) V-8 engine
- Distinctive wrapover roof design
- Exciting Tu-Tone paint treatment
- New Corrosion Warranty

Note: See Notable Standard Features, Measurements and color code reference on page 11.

Some items shown are optional. See the 1980 Ford Futura catalog for full details.

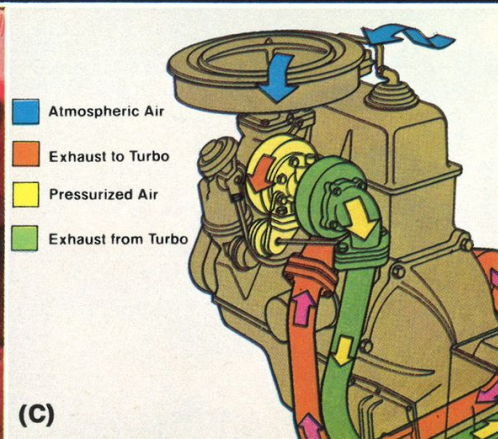
*See mileage statement on page 11.



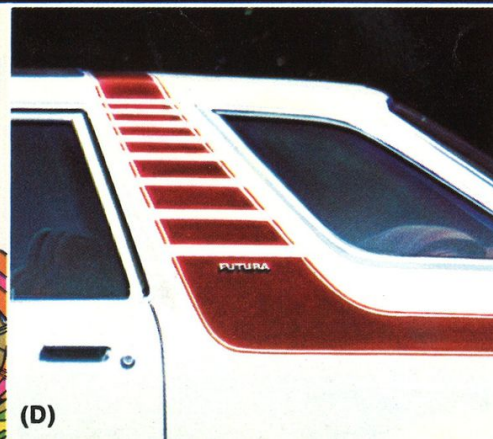
(A) Futura Ghia with Turbocharger



(B)



(C)



(D)

FORD

MUSTANG

A sports car for the 80's.

The second herd of new-breed Mustangs is here this year. Sports car. Personal car. Family car. It's just right for your personal style of driving.

Mustang is contoured with sleek, aerodynamic lines with emphasis on efficient use of space.

But most important, Mustang's standard 2.3 liter 4-cylinder overhead cam engine offers excellent fuel economy.* In its optional turbocharged version, the 2.3 liter engine gives you a greater thrust of reserve power for passing or merging (see B, below, and page 7). Mustang also offers a new 4.2 liter (255 CID) 2V V-8 with plenty of power, in addition to the popular 3.3 liter (200 CID) "T" 6-cylinder engine.

Mustang is available in sporty 2-Door. Versatile 3-Door. Elegant Ghia 2- and 3-Door. Exhilarating Cobra 3-Door. New standard features this year include P-metric steel-belted radial ply tires. (For more, see page 11.)

(A) Mustang 3-Door with Turbocharger. In White (9D) with 2.3 liter turbo, Michelin TRX tires on metric wheels, and accent stripes.

(B) 2.3 Liter Turbocharged 4-Cylinder Engine offers acceleration comparable to some other cars with V-8 engines. The turbocharger is basically an air compressor driven by recycled exhaust gases. This simple principle produces great acceleration. (See C, page 7.)

(C) Recaro Bucket Seats. New option for 1980. Orthopedically designed. Shown in Black (TA).

(D) Mustang 2-Door with Sport Option. Shown here in Bright Red (27).

BETTER IDEAS FOR THE 80's— MUSTANG.

- Aerodynamic sports car design
- Choice of 2.3 liter, 2.3 liter turbocharged, and new economical 4.2 liter (255 CID) V-8 engines*
- New Carriage Roof
- Many handling and suspension choices
- New Corrosion Warranty

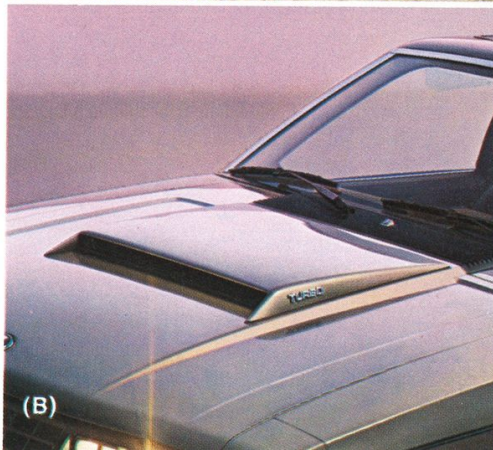
Note: See Notable Standard Features, Measurements and color code reference on page 11.

Some items shown are optional. See the 1980 Ford Mustang catalog for full details.

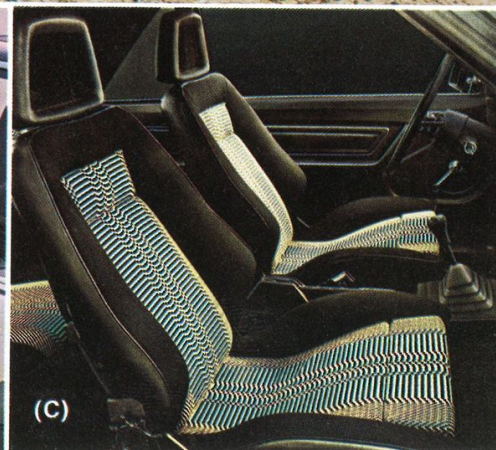
*See mileage statement on page 11.



(A) Mustang 3-Door with Turbocharger and Accent Stripes



(B)



(C)



(D)

FORD PINTO

Compare Pinto. It may be the best small car value in America.

Have you noticed how many multicar families are all-Pinto families? To live with a Pinto is to know it and love it. As 2½ million owners already can tell you.

Pinto's a proven car. With room for four. An economical 2.3 liter overhead cam engine (see D, below).*

Pinto choices include Pony, 2-door sedans, 3-door Runabouts and 2-door wagons, with all sorts of intriguing option packages.

Where Pinto really excels is how much car it delivers for its low price. For example, electric rear window defroster, steel-belted radials, wheel covers, tinted glass, protective bodyside moldings, and more are standard (see page 11 for additional standard features).

But you be the judge. Compare Pinto point for point and dollar for dollar with any other small car. That's where Pinto will really show you its value.

(A) Pinto 3-Door Runabout with Exterior Decor Group Option is proof that you get a lot of style with the value in Pinto. In Bright Caramel (5T).

(B) An Inside Look at Pinto Value. Low-back bucket seats and a new cloth/vinyl trim in Caramel (DT).

(C) Pinto Pony Wagon. One of America's lowest-priced wagons. Yet loaded with standard features. In Bright Red (27).

(D) 2.3 Liter OHC 4-Cylinder Engine. Together with the standard 4-speed manual transmission, the 2.3 liter engine gives Pinto its excellent fuel economy rating.* With Pinto's aerodynamics, it's another Better Idea for the 80's.

BETTER IDEAS FOR THE 80's—PINTO.

- Economical 2.3 liter OHC engine*
- Wide body style availability ■ 14 model and appearance choices ■ A long list of standard features ■ DuraSpark Electronic Ignition ■ New Corrosion Warranty

Note: See Notable Standard Features, Measurements and color code reference on page 11. Some items shown are optional. See the 1980 Ford Pinto catalog for full details.

*See mileage statement on page 11.



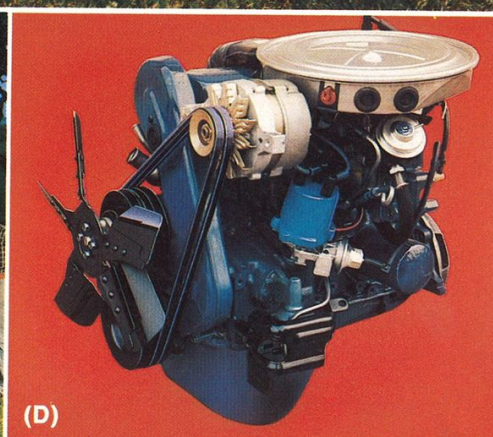
(A) Pinto 3-Door Runabout with Exterior Decor Group Option



(B)



(C)



(D)

Ford FIESTA

Wundercar!

Fiesta, the gutsy little import from Ford of Germany, gives you everything Europe applauded and bought. Worldwide, over 1,000,000 Fiestas have already been built!

Such popularity is easy to understand. Front wheel drive (see B, below). Transverse-mounted engine. Rack and pinion steering. MacPherson front suspension. These features are becoming more and more prominent on American automobiles.

On the road, Fiesta is pure excitement. Acceleration is exhilarating. Trim outside dimensions. Inside, more 4-passenger room than you might expect.

Fiesta is designed to be a car for today and for years to come. Its transverse-mounted 1.6 liter OHV 4-cylinder engine and 4-speed manual transmission are very economical.*

Test-drive Fiesta—sold and serviced all over America by more than 5,000 Ford Dealers.

(A) Fiesta with Decor Group Option. One of four group choices with bright accents and all of Fiesta's front wheel driving fun. In Yellow (9).

(B) Fiesta Front Wheel Drive. Provides traction for surefooted going. Transverse engine mounting provides a nearly flat floor and impressive leg room. Two more Better Ideas for the 80's!

(C) Fiesta Ghia Interior. Features this handsome velour cloth and vinyl upholstery in Red (1H).

(D) Fiesta 3-Door Sedan. The lowest-priced Fiesta is loaded with standard features. Shown in Red (R).

BETTER IDEAS FOR THE 80's—FIESTA.

■ Front wheel drive ■ Excellent fuel economy* ■ Michelin steel-belted radial-ply tires ■ MacPherson strut front suspension ■ Excellent handling and maneuverability ■ New Corrosion Warranty

Note: See Notable Standard Features, Measurements and color code reference on page 11.

Some items shown are optional. See the 1980 Ford Fiesta catalog for full details.

*See mileage statement on page 11.



(A) Fiesta with Decor Group Option



(B)



(C)



(D)

NOTABLE STANDARD FEATURES

(Another Better Idea: all new Fords have a new Corrosion Warranty. See note at right.)

THUNDERBIRD (pages 2-3)

4.2 liter (255 CID) 2V V-8 engine
 • SelectShift automatic transmission
 • Power front disc brakes • P-metric steel-belted radial ply BSW tires
 • Variable ratio power rack and pinion steering • Concealed rectangular headlamps • Wraparound parking lamps
 • Steering column-mounted levers for five functions • AM radio (may be deleted for price credit or upgraded at extra cost) • Electric clock • Deep-well trunk • Cloth/vinyl flight bench seat
 • Full wheel covers (4)

FORD LTD (page 4)

LTD S AND LTD SEDANS

5.0 liter (302 CID) VV V-8 • SelectShift automatic transmission • Power front disc brakes • P-metric steel-belted radial ply BSW tires • Power steering
 • Halogen headlamps (LTD) • Steering column-mounted levers for five functions • Deep-well trunk • Cloth/vinyl bench seat

LTD CROWN VICTORIA

Most of the above plus: Cloth/vinyl flight bench front seat • Deluxe door trim • Deluxe belts and reminder chime
 • Additional Sound Insulation • Electric clock • Padded rear half vinyl roof with wrapover molding • Hood/body-side accent stripes

GRANADA (page 5)

4.1 liter (250 CID) 1V "I" 6-cylinder engine* • 4-speed manual overdrive transmission* • Front disc brakes
 • Steel-belted radial ply BSW tires
 • Turn signal-mounted wiper/washer controls • Inside hood release • Front and rear bumper guards • All-vinyl flight bench seat with fold-down center armrest • Full wheel covers (4)

*Not available in California.

FAIRMONT (page 6)

2.3 liter OHC engine • 4-speed manual transmission • MacPherson strut-type front suspension; 4-bar link coil spring

rear suspension • Front disc brakes
 • P-metric steel-belted radial ply BSW tires • Rack and pinion steering
 • Steering column-mounted levers for five functions • Low-back vinyl bucket seats

FUTURA (page 7)

Fairmont standard features plus:

• Dual halogen headlamps • Deluxe Sound Insulation Package • Deluxe door trim panels; carpeted lower portion • Deluxe belts • Wrapover roof pillar with accent stripes • Deluxe wheel covers (4)

MUSTANG (page 8)

2.3 liter OHC 4-cylinder engine
 • 4-speed manual transmission
 • MacPherson strut-type front suspension; 4-bar link coil spring rear suspension • Rack and pinion steering
 • Dual halogen headlamps • Steering column-mounted levers for five functions • High-back bucket seats

PINTO (page 9)

(certain exceptions on Pony)

2.3 liter OHC 4-cylinder engine
 • 4-speed manual transmission • Independent coil spring front suspension; leaf spring rear suspension • Front disc brakes • Steel-belted radial ply BSW tires • Rack and pinion steering
 • Bumper guards and rub strips • High-back front bucket seats • Tinted glass • Electric rear window defroster
 • Vinyl insert body-side moldings

FIESTA (page 10)

Front wheel drive • Transverse-mounted 1.6 liter 4-cylinder OHV engine • Floor-mounted, 4-speed manual transmission • MacPherson strut front suspension • Front disc brakes • Michelin steel-belted radial ply tires • Rack and pinion steering
 • Steering column-mounted levers for eight functions • High-back bucket seats • Argent road wheels

Note: For more detailed listings of standard equipment, see individual car catalogs and the Ford Wagon catalog.

Measurements

	Wheel-base	Length	Width	Passengers	Trunk or Cargo Space	Fuel Capacity
Thunderbird	108.4"	200.4"	74.1"	4	17.7 cu. ft.	17.5 gal.
LTD 2-Door	114.3"	209.0"	77.5"	6	22.4 cu. ft.	19 gal.
LTD 4-Door	114.3"	209.0"	77.5"	6	22.4 cu. ft.	19 gal.
LTD Wagon	114.3"	215.0"	79.1"	6 (8)	89.7 cu. ft.	20 gal.
Granada 2-Door	109.9"	197.8"	74.5"	5	15.4 cu. ft.	18 gal.
Granada 4-Door	109.9"	197.8"	74.5"	5	15.4 cu. ft.	18 gal.
Fairmont 2-Door	105.5"	195.5"	71.0"	5	16.8 cu. ft.	14 gal.*
Fairmont 4-Door	105.5"	195.5"	71.0"	5	16.8 cu. ft.	14 gal.*
Fairmont Wagon	105.5"	195.5"	71.0"	5	79.5 cu. ft.	14 gal.
Futura 2-Door	105.5"	197.4"	71.0"	5	16.1 cu. ft.	14 gal.*
Mustang 2-Door	100.4"	179.1"	69.1"	4	10.0 cu. ft.	11.5 gal.**
Mustang 3-Door	100.4"	179.1"	69.1"	4	33.3 cu. ft.	11.5 gal.**
Pinto 2-Door	94.5"	170.8"	69.4"	4	8.2 cu. ft.	13 gal.†
Pinto 3-Door	94.5"	170.8"	69.4"	4	29.0 cu. ft.	13 gal.†
Pinto Wagon	94.8"	180.6"	69.7"	4	57.2 cu. ft.	14 gal.
Fiesta 3-Door	90.0"	147.1"	61.7"	4	29.0 cu. ft.	10 gal.

*12.7 gal. with 2.3 liter turbo engine.

**12.5 gal. on standard 2.3 liter Four with SelectAire Conditioner, 2.3 liter turbo with 4-speed manual, 3.3 liter (200 CID) "I" 6-cyl. and 4.2 liter (255 CID) V-8. 11.9 gal. on 2.3 liter turbo with SelectShift Automatic.

†11.7 gal. in California with automatic transmission.

NOTE: Dimensions given are for base model and may vary slightly for higher series in some car lines. Cargo space on 3-doors and wagons is with rear seat down. **LTD Wagons:** Add 11.9 cu. ft. of cargo space in lockable below-deck and side compartment stowage—less with optional dual facing rear seats which bring seating capacity up to 8.

NEW CORROSION WARRANTY. Ford Motor Company provides a 3-year, unlimited mileage corrosion warranty on all new 1980 model cars. The warranty states that any part which, in normal use, rusts through from corrosion within three years of retail delivery or first use will be repaired or replaced free of charge by the selling dealer after inspection by a Ford representative. Of course, exhaust system components or parts which develop corrosion perforation caused by accidents or other damage are not covered.

MILEAGE STATEMENT. At the time this catalog was published, 1980 EPA estimates were not available. All Ford cars, however, should post good miles-per-gallon ratings as they did in 1979. For the latest information, consult your Ford Dealer or the 1980 EPA Gas Mileage Guide.

EXTENDED SERVICE PLAN. Ford Motor Company's optional Extended Service Plan covers certain selected components on new Ford cars and light trucks for longer than the vehicle's basic warranty. The cost is so moderate for the protection you get that it could pay for itself the first time you need it. Ask your Ford Dealer for more information about the Plan.

LOW SCHEDULED MAINTENANCE. As part of a continuing program to lower the cost of ownership, scheduled maintenance requirements on most new Fords have been reduced dramatically in recent years. Your Ford Dealer can give you details regarding the particular Ford models in which you are interested, as maintenance schedules may differ.

COLOR AND TRIM CODES: Car colors and trims are coded, example: Silver Metallic (1G). Your Ford Dealer will be pleased to show you color and trim samples.

OPTION AVAILABILITY. Some features presented are optional at extra cost. Some options are required in combination with other options. Availability of some models and features described may be subject to a slight delay. Ask your Ford Dealer for the latest information on options, prices and availability.

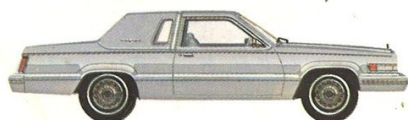
PRODUCT CHANGES. Ford reserves the right to change specifications at any time without incurring obligations.

**Buy or lease a new Ford from your Ford Dealer—
a great choice either way!**

FORD CHOICES THUNDERBIRD



Exterior Decor Group*
Candyapple Red (2K)

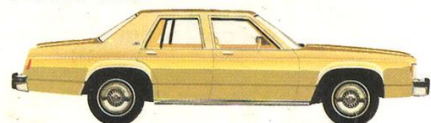


Exterior Luxury Group*
Light Grey (12)



Town Landau—Tu-Tone Polar
White (9D) over Bittersweet Glow (8D)

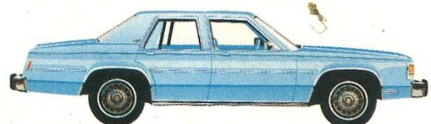
FORD LTD



LTD S 4-Door
Sand Glow (6B)



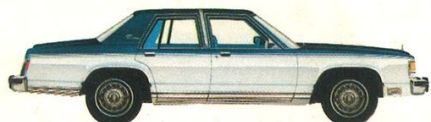
LTD 2-Door
Black (1C)



LTD 4-Door
Light Medium Blue (3F)



LTD Crown Victoria 2-Door
Dark Pine Metallic (7M)



LTD Crown Victoria 4-Door
Tu-Tone Dark Blue Metallic (3D)
over Silver Metallic (1G)



LTD S Wagon—Light Grey (12)

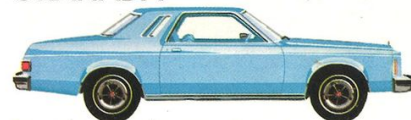


LTD Wagon—Light Pine Glow (4E)

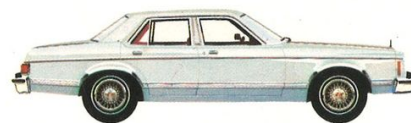


LTD Country Squire Wagon
Bittersweet Glow (8D)

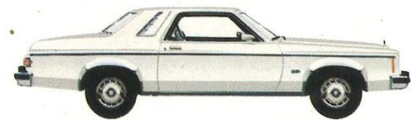
GRANADA



2-Door (shown, also 4-Door)
Light Medium Blue (3F)



Ghia 4-Door (shown, also 2-Door)
Silver Metallic (1G)



ESS 2-Door (shown, also 4-Door)
Polar White (9D)

FAIRMONT



2-Door with Exterior Accent Group
(shown, also 4-Door),*—Pastel Sand (6D)



4-Door with Exterior Decor Group (shown,
also 2-Door),*—Bittersweet Glow (8D)



4-Door with ES OPTION*
(shown, also 2-Door)—Silver Metallic (1G)



Wagon—Chamois Glow (8W)



Squire Wagon*—Red Glow (2H)

FUTURA



Dark Blue Metallic (3D)



Sport Group.*—Light Medium Blue (3F)
over Dark Medium Blue Metallic (3D)

MUSTANG



2-Door
Bittersweet Glow (8D)



3-Door
Dark Cordovan Metallic (8N)



Ghia 3-Door (shown, also 2-Door)
Chamois Glow (8W)



Cobra 3-Door*
Dark Chamois Metallic (8A)

PINTO



Pony 2-Door
Dark Chamois Metallic (8A)



2-Door
Bright Red (27)



3-Door Runabout with Cruising
Package*—Bright Yellow (6N)



3-Door with Rallye Package*
(also available with wagon)
Silver Metallic (1G)



Pony Wagon
Light Medium Blue (3F)



Wagon with Exterior Decor Group*
Dark Pine Metallic (7M)



Squire Wagon*
Bright Blue (3J)



Wagon with Cruising Package*
Bright Caramel (5T)

FIESTA



3-Door Hatchback
Terra Cotta (D)

*Option Group. See individual 1980 car line
catalog for complete details.

FORD

FORD DIVISION

