



Chris Clements
Chief Designer



Claude Lobo
*Director of
Advanced Design*



Richard Parry-Jones
*Vice President,
Ford Small/Medium
Vehicle Centre*



Scott Strong
Exterior Design



Shareen Rapaport
Interior Colour & Trim



Mark Adams
*Interior Design
Manager*

"What we were pushing for was a design that was
simple yet distinctive, sophisticated yet futuristic."

CHRIS CLEMENTS



individual
simple
elegant



design

4-5

environment

6-7

comfort

8-9

drive

10-11

protect

12-13

style

16-17

specifications

19-21

colours and trim

24-25



KA



KA²



KA³



design

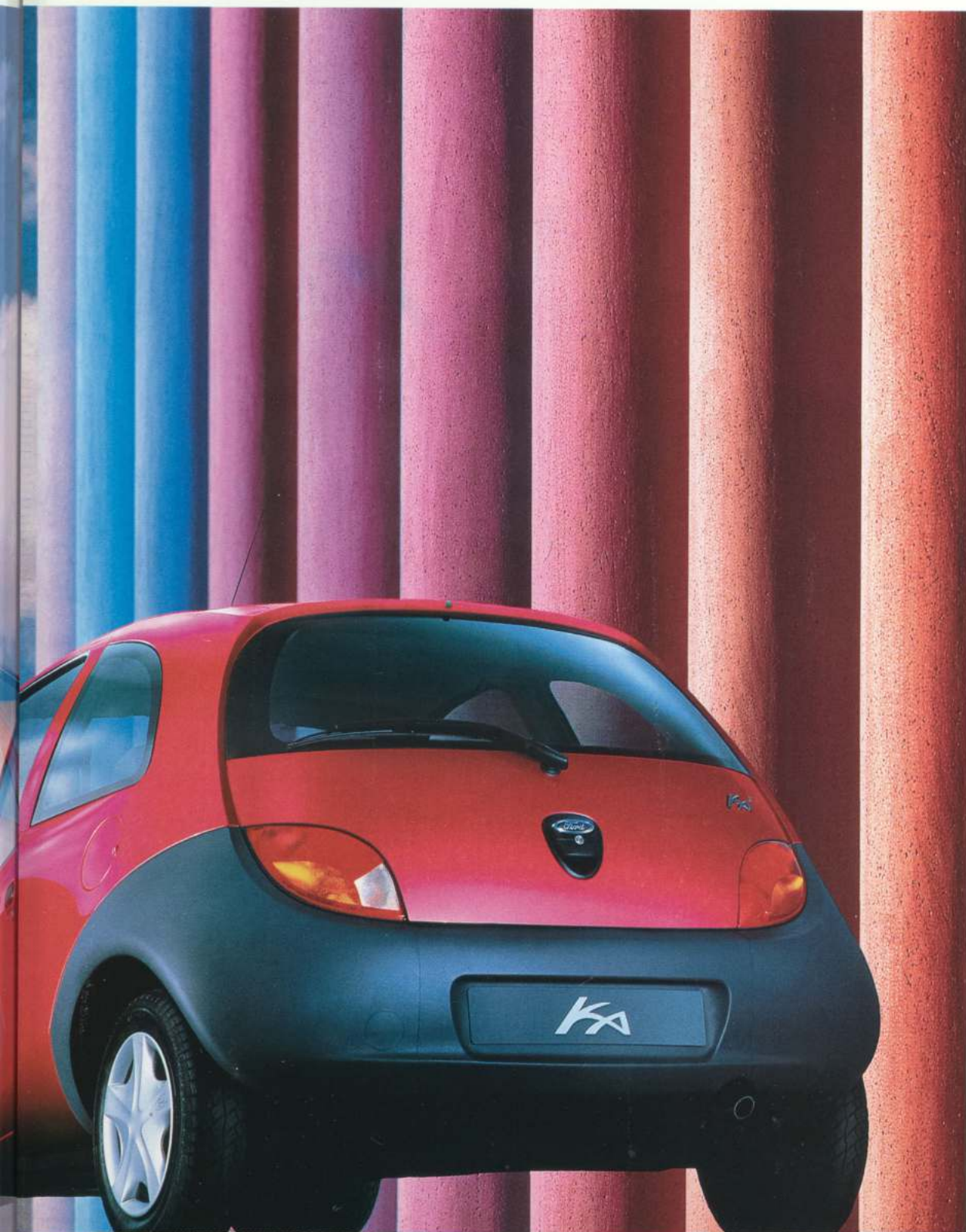


"To achieve our goal meant breaking with certain small car design conventions. Why shouldn't Ka look as sophisticated as some larger cars?"



S
C
O
T
T

S
T
R
O
N
G



individual

Vehicle shown features
Dealer fit accessory
sunroof.

...functionality of the design adds to the driving experience."

Every switch and every button easily reached.
Every dial and display easily read. Nothing
designed for mere effect. The simple thing
done well.



"As a designer I like the fact that the look is distinctive and that the functionality of the design adds to the driving experience."



M
A
R
K

A
D
A
M
S



simple

The 6000 Radio/CD (above left) is standard on Ka² and available as an option on Ka and Ka². The 5000 Radio/Cassette (above right) is standard on Ka², while the 1000 Radio/Cassette (main picture) is standard on Ka. Optional Passenger Airbag shown (available at extra cost).

comfort



...the balance of form and colour...

Understatement. No gilding of the lily.
Design harmony.

*Ka³ and Ka³ feature rear
head restraints as
standard, for additional
occupant safety.*

*Bottom sequence: Unique
rotating glovebox (only
available when optional
Passenger Airbag is fitted)
provides a spacious
storage point.*



"Harmony was important on the inside. Busyness was out and the balance of form and colour became our signature."

S
H
A
R
E
E
N

R
A
P
A
P
O
R
T



elegant

*Adjustable, contoured
fabric seating combines
the virtues of lumbar
support with comfort.*

drive



...small, agile and easy...

Precise steering. Crisp acceleration.
Big car stability. Clear intent,
classic execution.



*Ka's engine fully complies
with latest EEC emission
and exterior 'drive-by'
noise regulations.*



*The braking system
features asbestos-free
pads to give a long life to
both linings and disc
faces.*



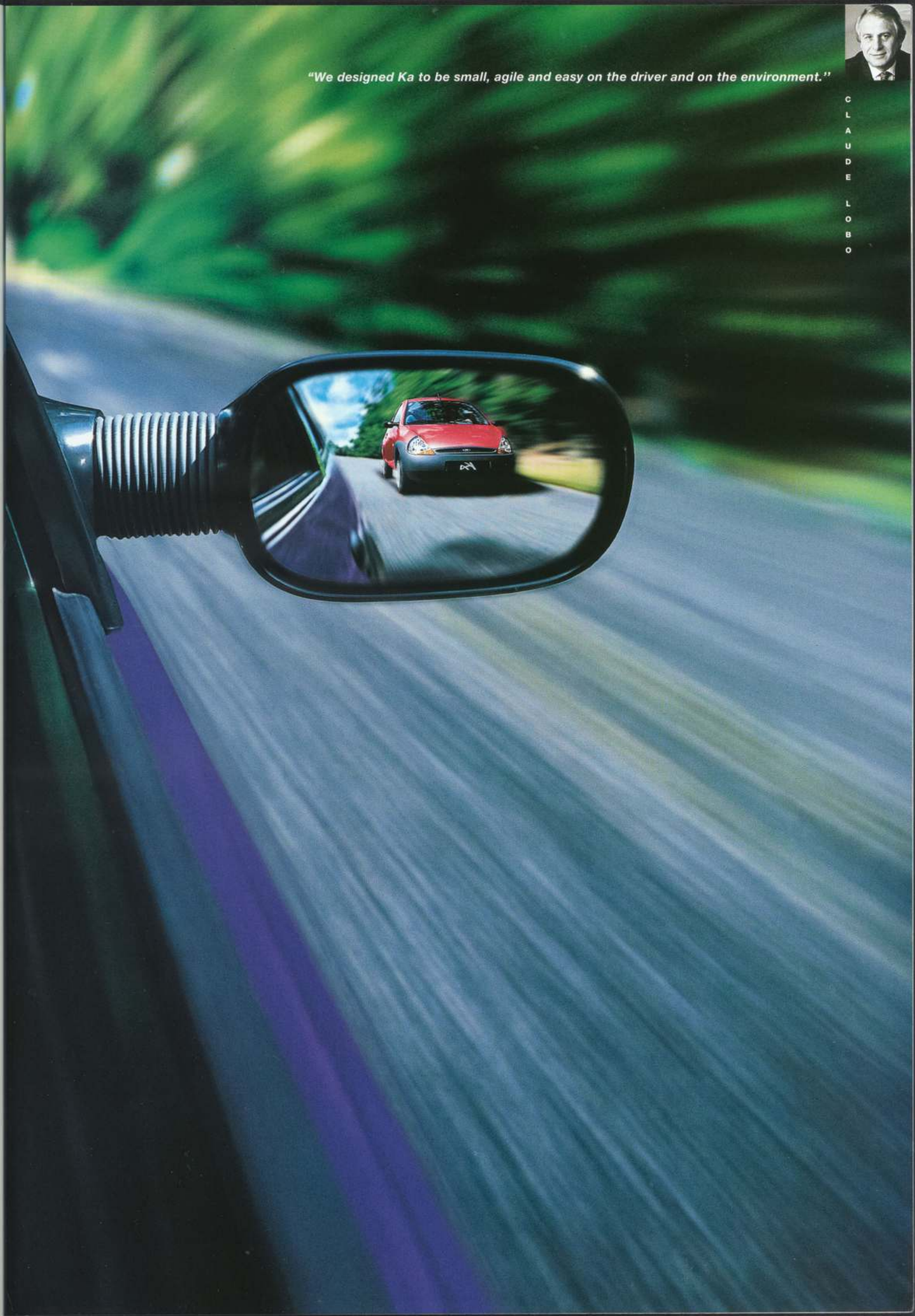
*The EEC V module is the
most powerful engine
management system
available with Ford cars.*

"We designed Ka to be small, agile and easy on the driver and on the environment."

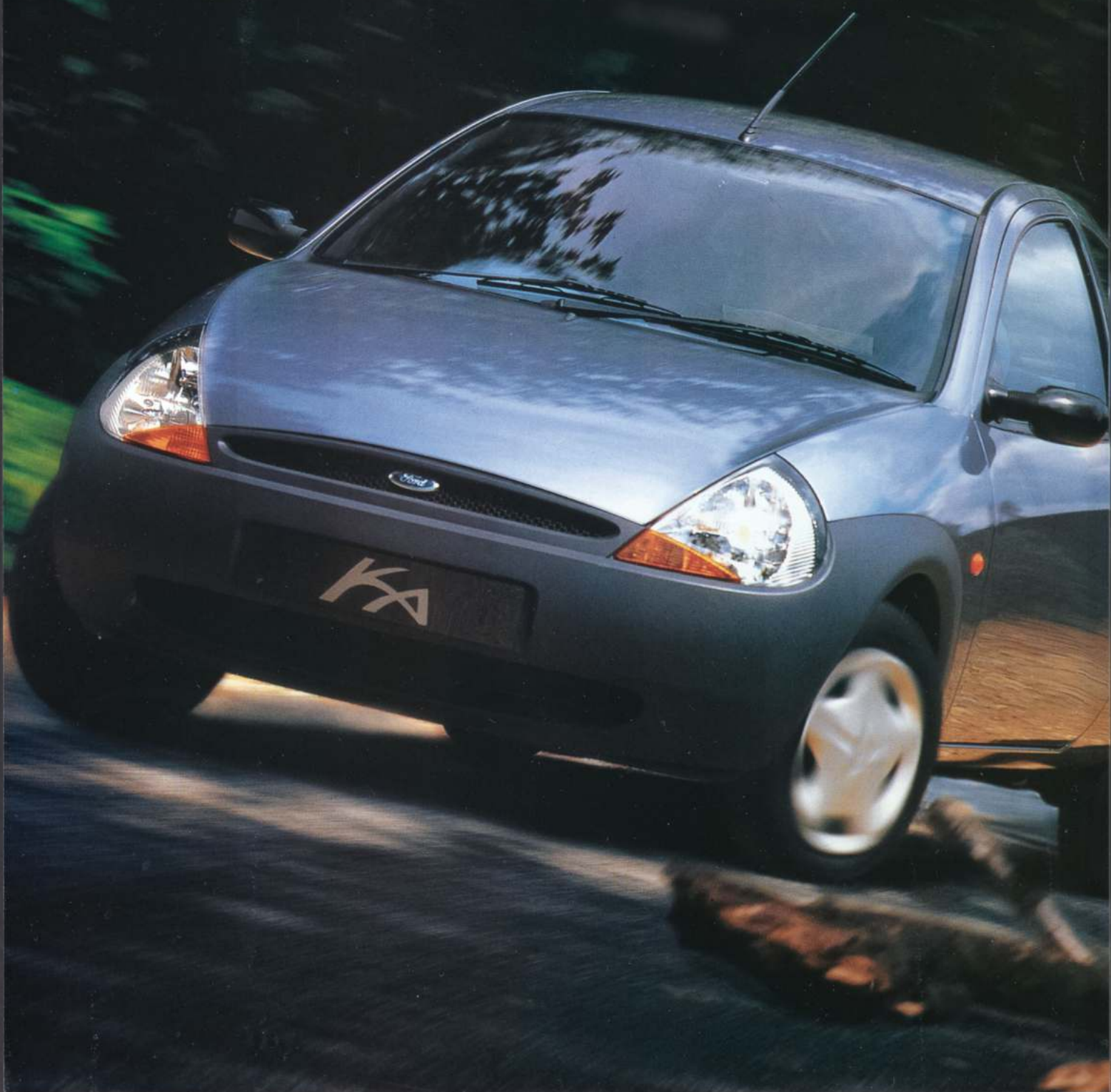


C
L
A
U
D
E

L
O
B
O



protect



"Ka is engineered to provide levels of safety normally associated with larger cars."



R
I
C
H
A
R
D

P
A
R
R
Y
·
J
O
N
E
S

...safety and security

Driver's Airbag. Front seat belt "grabbers".
Anti-theft immobiliser. Shielded door locks.
The uncommon made universal.



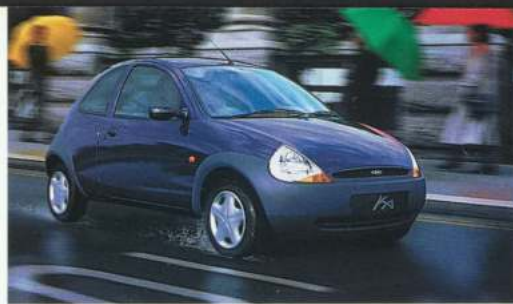
All Ka audio systems feature a removable front panel for extra security.

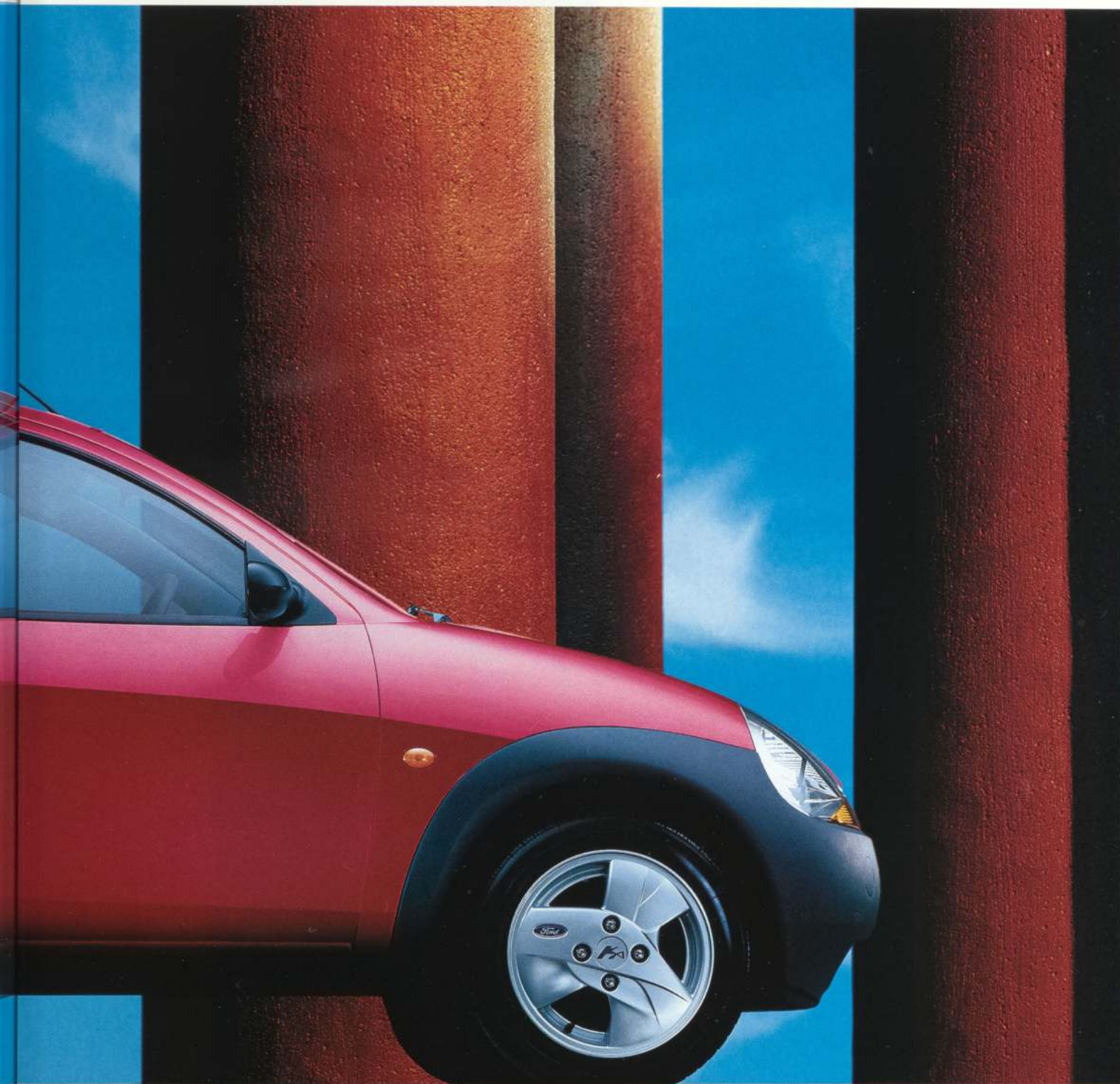


The Ka has been extensively tested across a wide range of climatic conditions.



Ka meets the latest draft EEC Step 2 proposals for front and side impact two years ahead of the implementation date, October 1998.





Main picture shows Ka³.

style

Quality options and accessories. Functional and practical. Personalise in style.



Free Ka branded phone and
hands-free kit if required.
(Installation of kit at extra cost.)





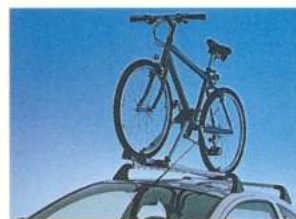
Compact Disc Concertina.
Useful and portable, holds up to 12 unboxed CDs providing easy access to the discs and protects them from damage.



Roof spoiler.
Personalise your Ka with this distinctive body colour roof spoiler.



Leather steering wheel and gear knob.
A smooth, perforated black leather-trimmed steering wheel, which incorporates the standard Airbag pad, and matching leather gear knob.

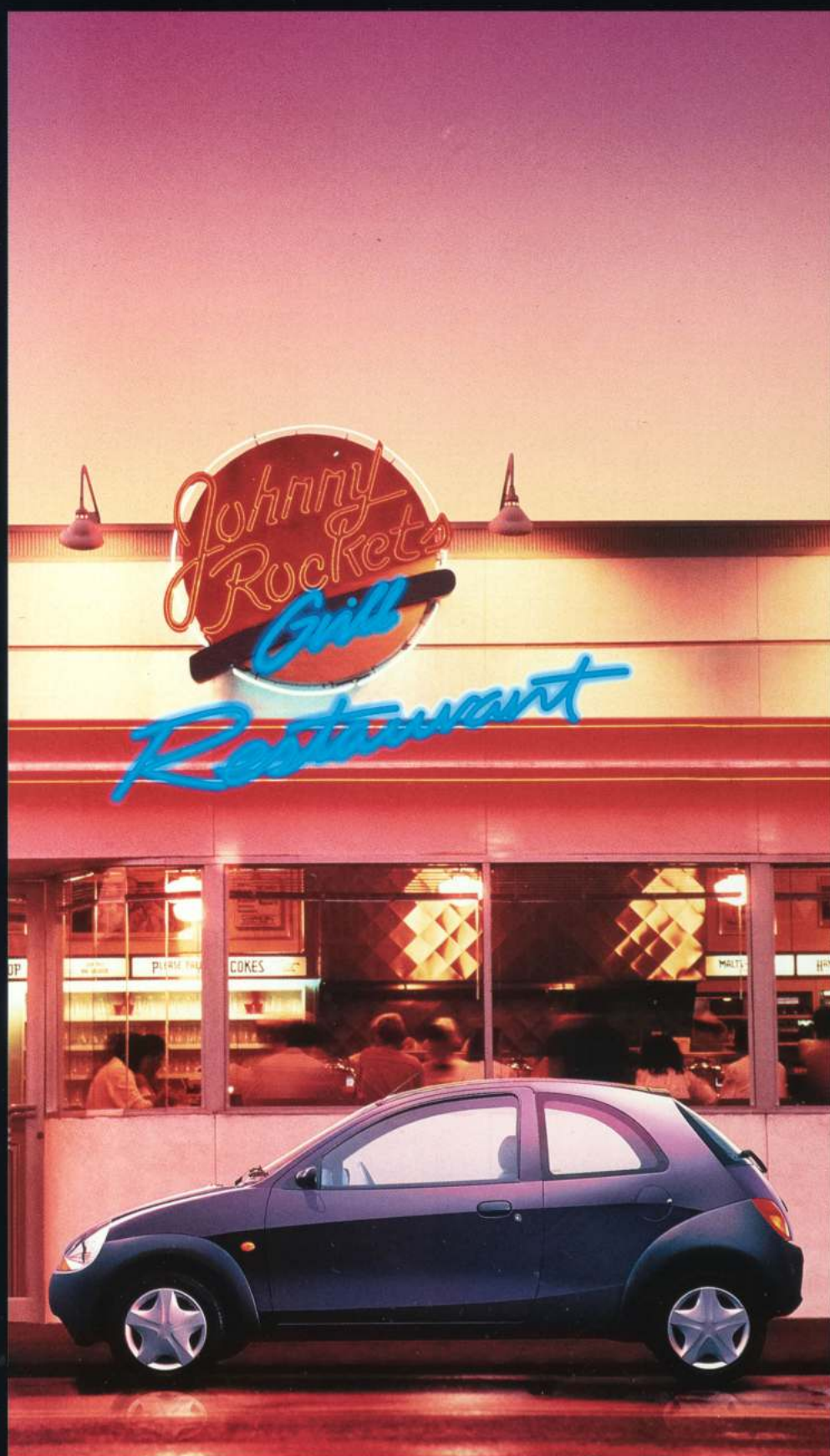


Roof transportation system. With Ford's roof transportation system you can carry skis, bicycles or other items of luggage safely and conveniently.



Removable stowage box. Easy to install or remove and taking up minimal space, this stowage box will accommodate the warning triangle, a first aid box, owner's handbook, etc.

The photograph shows optional alloy wheels. The sunroof is available as a Dealer fit accessory.



specifications

Model availability

& Weights and Loads

Ka	Kerbweights (kg) ^{1†}			Gross Vehicle Mass (GVM) (kg)
1.3i	Ka	Ka ²	Ka ³	
	871	890	935	1265

^{1†} Represents the lightest kerbweight assuming full fluid levels and 90% fuel levels, subject to manufacturing tolerances and options, etc., fitted. All vehicles are 5-speed manual and are equipped with a Catalytic Converter.

Dimensions

Exterior (mm)

A Overall length	3620
B Overall width without mirrors	1631
C Overall width with mirrors	1827
D Unladen height	1368
E Wheelbase	2446

Interior (mm)

Front

F Effective headroom	991
G Max. effective leg room	1036
H Shoulder room	1307

Rear

I Effective headroom	923
J Min. effective leg room	799
K Shoulder room	1279

Stowable luggage (cu m)[‡]

L 4-seat mode	0.186/0.210*
M 2-seat mode (laden to roof)	0.724

Turning circle (m)

Kerb to kerb	9.9
--------------	-----

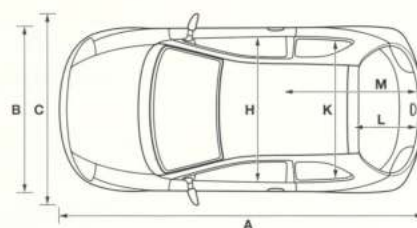
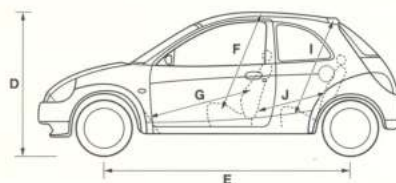
Fuel tank (litres)

Capacity (useable)	40
--------------------	----

* According to rear seat back rake position

[‡] Measured using the VDA method

Dimensions may vary dependent on the model and equipment fitted.



Insurance Groups

1.3i	Ka	Ka ²	Ka ³
	2	2	TBA

See back cover for details.

Engine data

Engine technical features	Maximum power ^a	Maximum torque ^a
1.3 HCS EFi (Catalyst) 1299 cc	44 kW (60 PS) at 5000 min ⁻¹ (rpm)	105 Nm at 2500 min ⁻¹ (rpm)
Cylinders – 4 in-line ■ Fuel injection with EEC V engine management system ■ Electronic breakerless ignition		

^a Tested in accordance with ISO 1585

Fuel and performance

Ka	Fuel consumption in L/100km (mpg) [†]			Performance (Ford test figs.)		
1.3i	Urban	Extra urban	Combined	Max. speed mph	0-60 mph (secs)	30-50 mph* (secs)
	8.8 (32.1)	5.5 (51.4)	6.7 (42.2)	96	14.3	8.9

[†] All figures in L/100km (mpg) are from officially approved tests under the Passenger Car Fuel Consumption Order 1983 and in accordance with EEC Directive 93/116/EC. * in 4th Gear.

The Government fuel consumption test figures shown in the chart do not express or imply any guarantee of the fuel consumption of a car of the class in question. See back cover.

Note: All vehicles are 5-speed manual and are equipped with a Catalytic Converter.

Note:

Urban

An engine started from cold in laboratory conditions operated at varying speeds, maximum 31 mph, average 12 mph over a theoretical distance of 4km (2.5 miles).

Extra Urban

Conducted immediately after the urban cycle, it consists of half steady speed driving and half varying speed driving, maximum 75 mph over a distance of 7km (4.3 miles).

Combined

This is an average of the two parts of the test, weighted by the distances covered in each part.



Designated cup holders

Mechanical features

	Saloons			
	Ka	Ka ²	Ka ³	
Brakes				
Diagonally-split, with dual-line servo-assistance. Front discs, rear drums	■	■	■	
Steering				
Power-assisted rack-and-pinion (variable ratio)	■	■	■	
Suspension and Body				
Front – Independent with MacPherson struts, and sub-frame mounted 'A' arm. Anti-roll bar	■	■	■	
Rear – Twist-beam semi-trailing coil springs	■	■	■	
Side impact door beams. Steel safety cage with engine compartment cross beam. Energy absorbing crumple zones, front and rear	■	■	■	
Steering column – Brace mounting	■	■	■	
Towing eye – Screw-in front and rear	■	■	■	

Exterior features

	Saloons			
	Ka	Ka ²	Ka ³	
Exterior Appearance and Styling				
Bumpers – Blue	■	■	■	
Wheels – 5x13 Steel with full wheelcovers and 165/65Rx13 tyres	■	■	■	
Wheels – 5½x14 Alloy (steel spare) with 165/60Rx14 tyres				■
Metallic paint		■	■	
Exterior Functional				
Aerial – Roof-mounted	■	■	■	
Door mirrors – Manual internal control, black housings	■	■	■	
Fuel cap – Locking	■	■	■	
Heated rear window	■	■	■	
Immobiliser – Safeguard system	■	■	■	
Locks – Central locking		■	■	
Locks – High security, shielded	■	■	■	
Tinted glass	■	■	■	
Vehicle Identification Number (VIN) – Visible	■	■	■	
Wheel arch liners – Front	■	■	■	
Windscreen washer jets	■	■	■	
Wipers – Front, two speed, plus intermittent	■	■	■	
Wipers – Tailgate wiper with electric wash	■	■	■	
Exterior Lighting				
Halogen headlights, side lights, rear fog light, reversing light	■	■	■	



Locking fuel filler cap

Interior features

	Saloons			
	Ka	Ka ²	Ka ³	
Audio				
Stereo FM Radio/Cassette – Model 1000, removable control panel, 2 speakers	■			
Stereo Radio/Cassette – Model 5000 RDS EON, removable control panel, 'Keycode' anti-theft coding		■		
Stereo Radio/CD – Model 6000 RDS EON, removable control panel, 'Keycode' anti-theft coding				■
Carpet and Trim				
Carpet – Non-woven velour	■	■	■	
Door trim – Fabric insert, moulded panel with pull handle/armrest, door bins and integrated speakers	■	■	■	
Leather-trimmed steering wheel and gear knob				■
Interior Lighting				
Courtesy light – Header-mounted, door-operated	■	■	■	
Instruments and Controls				
Instruments – Speedometer, odometer, trip recorder, constant read-out fuel gauge	■	■	■	
Warning indicators for oil pressure, engine temperature, direction indicators, high beam, ignition/alternator, low brake fluid/handbrake on, Airbag(s), 'lights on' audible warning	■	■	■	
Illuminated heater controls – 4-speed fan. Four vents with temperature and direction control. Pollen filter	■	■	■	

Central locking



Interior features (continued)

Instruments and Controls (continued)

Control stalks – Column-mounted for master lights, indicators and wash/wipe functions

Airbag – Driver's

Steering wheel – Two-spoke incorporating horn function (leather-trimmed on Ka³)

Seats and Seat Belts

Front seat – Driver's manual height adjust

Front seats – Anti-submarining

Front seats – Fully reclining with height-adjustable head restraints

Storage nets – Front seat backs

Rear seat – 2 position seat back rake adjust

Rear seat – Folding back

Rear seat – 50:50 split back

Rear seats – Head restraints

Seat belts – Front, inertia reel, with grabbers. Rear, two inertia reel

Comfort and Convenience

Accessory power socket

Air conditioning – CFC free

Centre console – With cup recesses

Clock – Analogue

Coathook – Driver's side

Mirror – Dipping rear view

Mirror – Passenger's sunvisor

Storage – Passenger's removable storage box (rotating storage with optional Passenger Airbag)

Storage – Rear storage box with lid

Windows – Opening rear vents

Windows – Electrically-operated front windows

Saloons
Ka Ka² Ka³



**EXTRA
COVER**



**Worry Free
Motoring**

**One, Two and
Three Star
maintenance
plans**

Your Ford Dealer can advise you on Extra Cover One, Two and Three Star Warranty plans from Ford. They allow you to add routine servicing or full maintenance cover to your standard New Vehicle Warranty. All plans include RAC Membership and Accident Assist.

Note:

• All Extra Cover plans begin from the New Vehicle Warranty commencement date, irrespective of the Extra Cover sale date, and continue until the completion of the time and mileage allowance, whichever occurs first.

• Extra Cover can be purchased within 12 months of the New Vehicle Warranty commencement date.

• Service Cover can only be purchased within 3 months of the New Vehicle Warranty commencement date.

Ford 6000 Radio/CD player

Options

at extra cost

Equipment

Airbag – Front passenger's* with rotating stowage box

Anti-lock brakes

Air conditioning – CFC-free (only with power-assisted steering)

Ford GSM Phone (no charge) with optional (no charge) 'Hands-free' kit^a

Leather-trimmed steering wheel and gear knob

Power-assisted steering – Delete, includes 155/70R13 tyres

Spoiler – Roof

Wheels – 5x13 Alloy 5-spoke (steel spare)

Wheels – 5x14 Alloy 6-spoke (steel spare) with 165/60 tyres

Audio

Stereo Radio/Cassette – Model 5000 RDS EON, removable control panel, 'Keycode' anti-theft coding

Stereo Radio/CD – Model 6000 RDS EON, removable control panel, 'Keycode' anti-theft coding

Body Colour

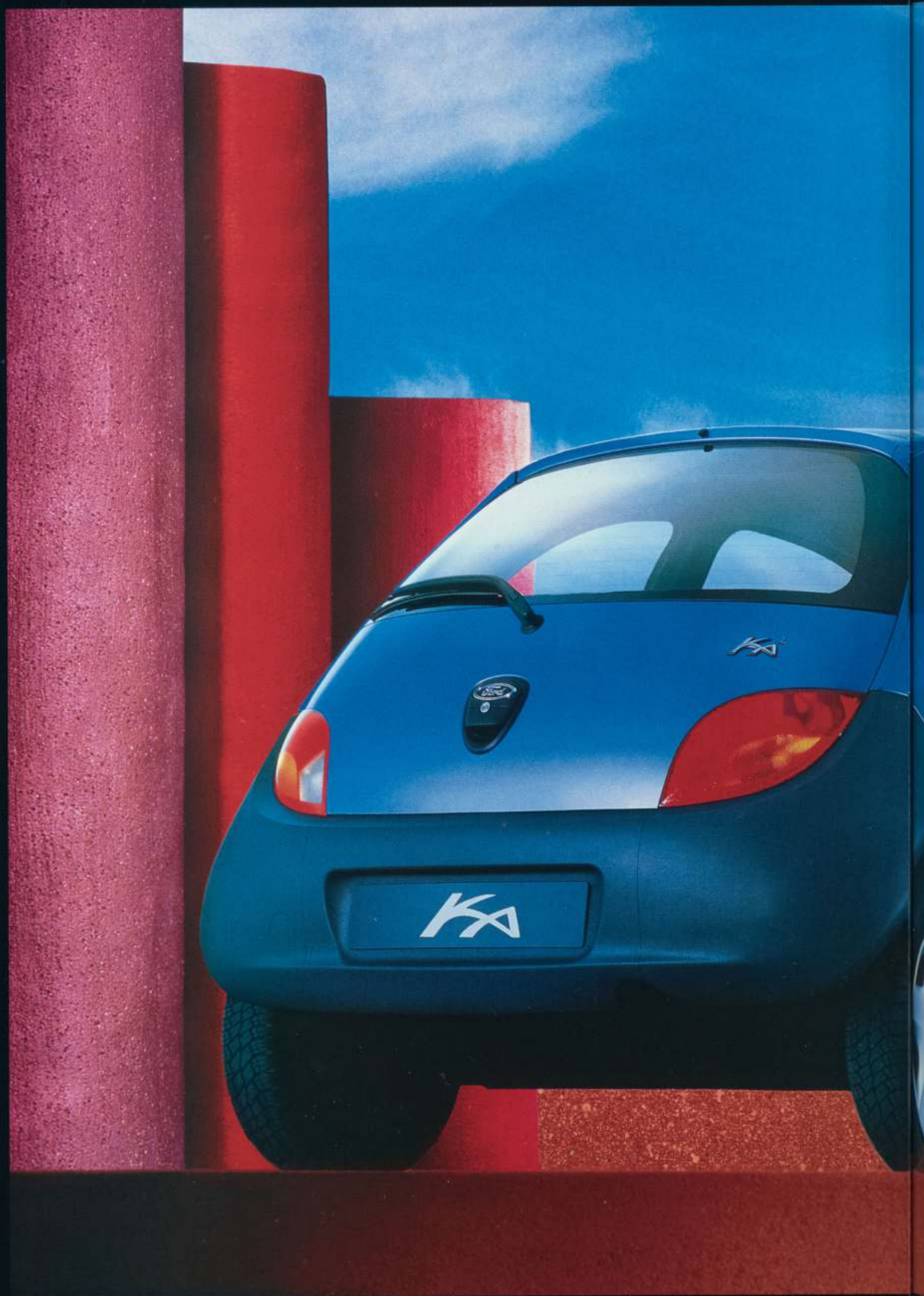
Paint – Metallic

Saloons
Ka Ka² Ka³

^a Subject to status and the signing of a 12 month airtime agreement. The agreement may be terminated by giving 30 days written notice after the end of the 12 month period. Available in conjunction with the purchase in the UK of a new Ford vehicle (excluding the Channel Islands and Isle of Man, named daily rental companies (Avis, Hertz, Budget, Eurocar, Euro Dollar, Flightform, Thrifty and their licensees/agents and Daily Rental), Ford and Dealer demonstrator programme vehicles, FRCS/Service rental vehicles, direct service vehicles). Installation of 'Hands-free' kit is extra cost.

***Note: A rear-facing child seat should never be placed in the front passenger seat if the Ford vehicle is equipped with a front passenger Airbag.**





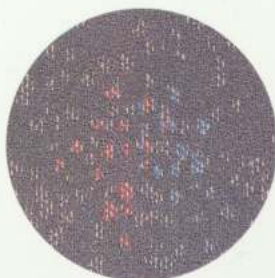


For more information on Ka, call the Ford Information Service on 0345 111 888



	Solid Body Colours			Metallic Body Colours*						
Model	Belladonna	Radiant Red	Bright Blue	Panther Black	Cuirass	Electric Current	Silver	Mica Stone	Amparo Blue	Autumn Green
Ka	■	■	■	■	■	■	■	■	■	■
Ka ²				■	■	■	■	■	■	■
Ka ³				■	■	■	■	■	■	■

*Extra cost on Ka.



Arco trim



Autumn Green – Metallic



Cuirass – Metallic



Panther Black – Metallic



Electric Current – Metallic



Mica Stone – Metallic



Belladonna – Solid



Radiant Red – Solid



Silver – Metallic



Bright Blue – Solid



Amparo Blue – Metallic

Note:

The car images used are to illustrate body colours only and may not reflect current specification. Colours and trims reproduced on these pages may vary from the actual colours due to the limitations of printing processes used.



BY APPOINTMENT TO
HER MAJESTY THE QUEEN
MOTOR VEHICLE MANUFACTURERS
FORD MOTOR COMPANY LIMITED
BRENTWOOD ESSEX



BY APPOINTMENT TO
H.M. QUEEN ELIZABETH THE QUEEN MOTHER
MOTOR VEHICLE MANUFACTURERS
FORD MOTOR COMPANY LIMITED
BRENTWOOD ESSEX



BY APPOINTMENT TO
H.R.H. THE PRINCE OF WALES
MOTOR VEHICLE MANUFACTURERS
FORD MOTOR COMPANY LIMITED
BRENTWOOD ESSEX

The Government fuel figures do not express or imply any guarantee of the fuel consumption of any particular car. The cars themselves have not been tested and there are inevitably differences between individual cars of the same model. In addition, a car may incorporate particular modifications. Furthermore, the driver's style and road and traffic conditions, as well as the extent to which the car has been driven and the standard of maintenance, will affect its fuel consumption.

Insurance Groups are only as recommended by the Association of British Insurers. You should always consult your insurance adviser for confirmation.

Illustrations, descriptions and specifications. This catalogue was correct at the time of going to print. However, Ford policy is one of continuous product development. The right is reserved to change specifications, colours and prices of the models and items illustrated and described in this publication at any time. For the latest details always consult your Ford Dealer.

Optional Equipment. Throughout this publication, wherever a feature is described as being an 'Option' or 'Optional Fitment/Pack' etc, you should assume that it will be at extra cost to the base vehicle, unless specifically stated to the contrary.

Designed and produced by Allan Burrows Limited, Ingatestone, Essex.

Printed by Jarrolds Printing, Norwich.

Published by Ford Motor Company Limited
Brentwood, Essex, England.
Registered in England No 235446

FA 1269/5

January 1998.

© Ford Motor Company Limited.

www.ford.co.uk

Your Ford Dealer

