

# Mondeo

1997 Edition 2







## Express yourself

Express yourself	1
Ghia X	2
The applied art of comfort	4
Built for safe, dynamic driving	6
Interior comfort	8
Tailored to suit your needs	10
LX	11
GLX	12
Si	14
ST24	16
Ghia	18
Space without compromise	20
Wheels and wheelcovers	22
Factory-fitted options	23
Ford Audio Systems	24
Ford Cellular Systems	24
Motorsport	25
Mondeo specifications	26
Ford and Ford Credit Services	32
Interior Trims	33
Body Colours	34

Dynamic engineering and intelligent design are married to advanced technology and luxury. Precise, positive and rewarding, Mondeo is the car for drivers who believe that travelling should be as satisfying as arriving.

The aerodynamic flowing contours of the low line bonnet and integral flush headlights give the new Mondeo a fresh appearance.



*Visionary Lights*



*Dramatic Body Styling*



*Driven by the Heart*



*Improved Suspension*



Ghia X



Vehicle shown features optional equipment.



# The applied art of comfort



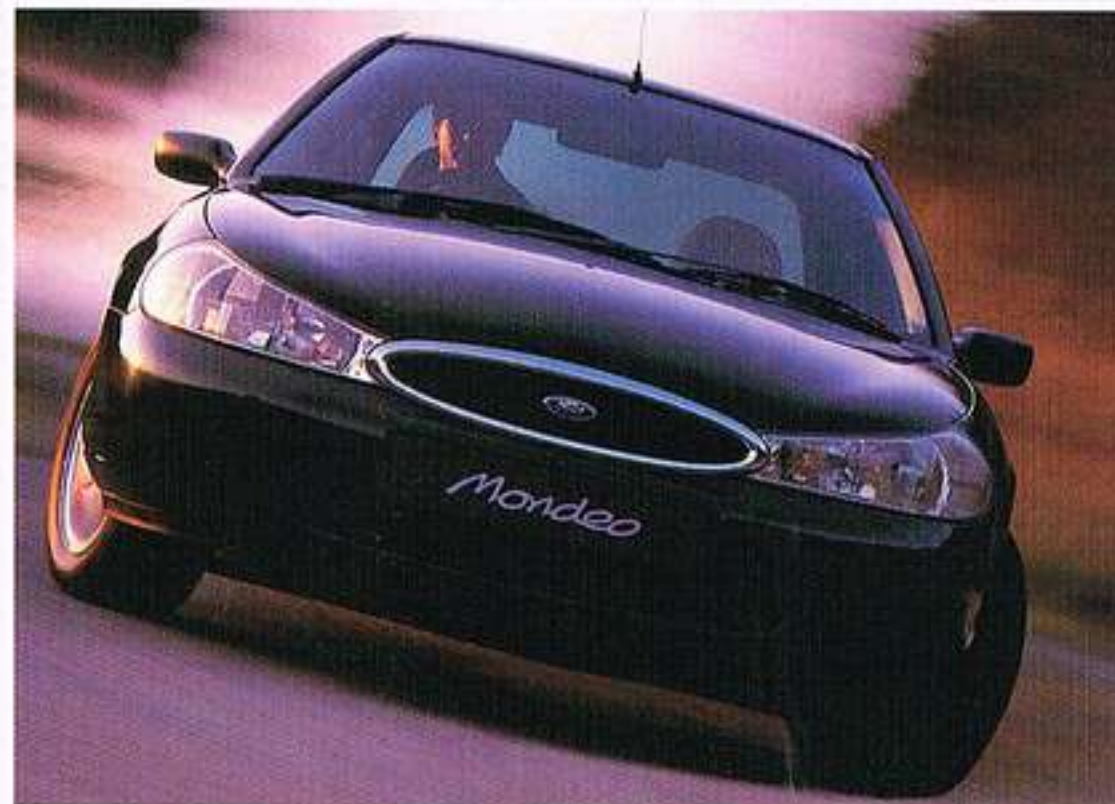
Interior shown features optional equipment.





## Built for safe, dynamic driving

Mondeo's enhanced driving dynamics provide a level of controlled, consistent handling that makes driving a real pleasure. Building on Mondeo's established reputation for safety, our engineers have strengthened the inner safety cell and further improved both the range of passive and active safety features available across the range.



Traction Control, where specified, works in conjunction with ABS. At low speeds the integrated traction control system uses the ABS controller to activate the brakes on

whichever front wheel has started to spin, diverting the driving torque to the other wheel. At speeds above 50 km/h (31 mph) the TC system electronically reduces

engine output until it matches available traction. The result is improvement in handling and stability in difficult conditions.

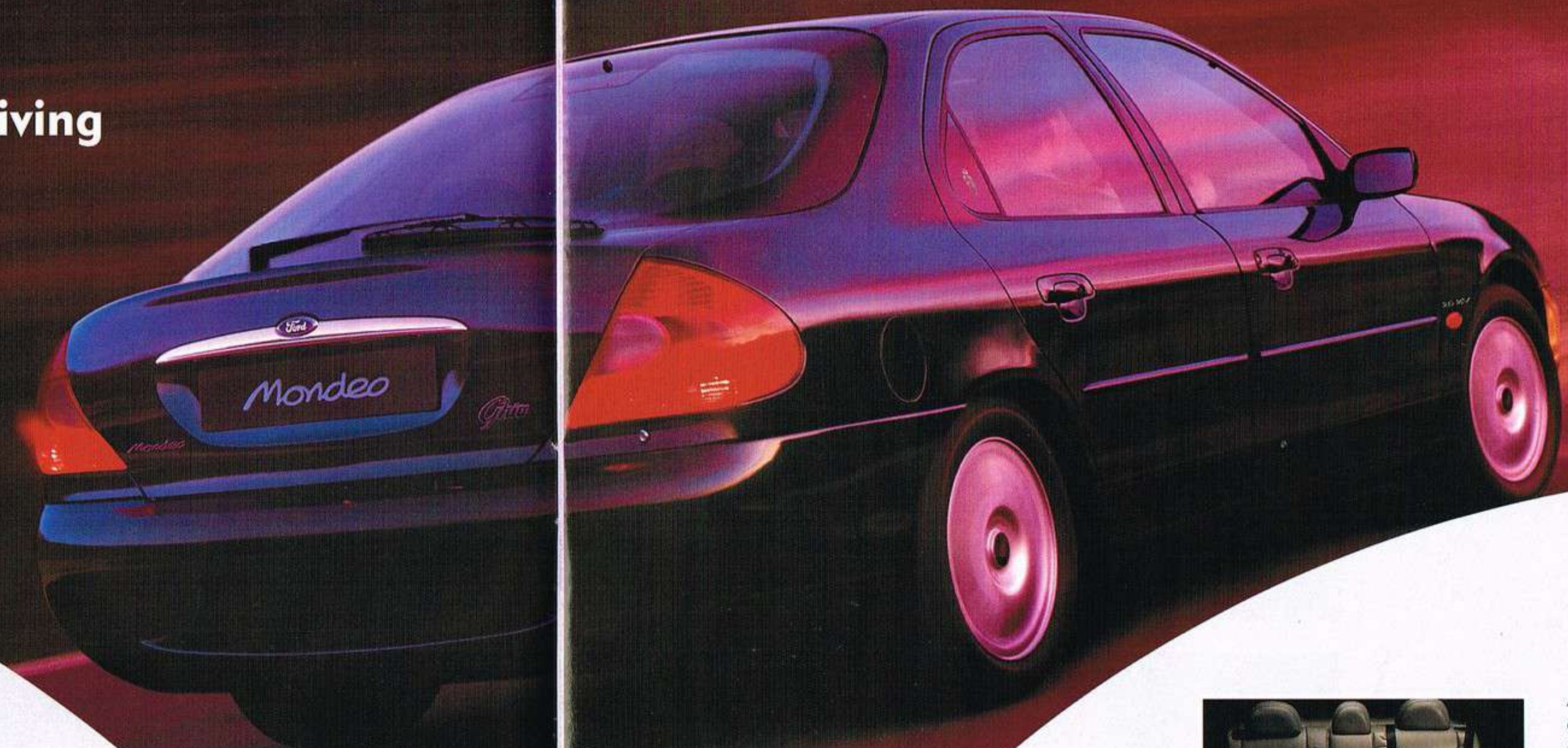


**New suspension.** Mondeo's suspension has been revised to provide both improved ride and handling.



**Anti-lock Braking System.** For extra braking stability, the latest Mecatronic III four-channel ABS system incorporating electronic

brake force distribution, optimises stability under heavy braking. Standard on GLX and above, (Mecatronic II is combined with traction control on V6 models).



A rear centre lap and diagonal seat belt is now standard across the range.



A centre high-mounted rear brake light helps ensure that other motorists have a clear and visible signal of your braking.



'Quickclear' heated windscreens are standard on most Mondeo models and make a very positive contribution to clearer visibility in adverse weather conditions.



To complement the Mondeo's standard driver's Airbag, the optional front passenger's Airbag is available with, or without side Airbags.



# Interior comfort

A new range of colour and trim combinations provides you with a wide variety of interiors.

## Aspen

Driver's Airbag; 'Lights on' audible warning; steering column adjustment for rake and reach; driver's seat manual tilt adjustment; and RDS Stereo Radio/Cassette – Model 4000 T, with removable control panel, 'Keycode' anti-theft coding, four speakers.

## LX

Additional features over Aspen include electrically-operated front windows with one-shot lowering on driver's side; tilt-or-slide sunroof with louvred blind; and Stereo Radio/Cassette – Model 5000 RDS EON.

## GLX

Additional features over LX include electrically-operated and heated door mirrors; driver's seat lumbar and electric height adjustment; two adjustable rear head restraints; rear seat folding armrest; and variable intermittent windscreen wipe.

## Si

Additional features over LX include electrically-operated and heated door mirrors; sports front seats with driver's seat lumbar adjustment; leather-clad four-spoke steering wheel; metallic finish instrument cluster bezel; and two adjustable rear head restraints.



## ST24

Additional features over Si include CFC-free air conditioning; electrically-operated rear windows; electrically-operated tilt-or-slide sunroof; half leather-trimmed sports seats with driver's seat electric height adjustment; passenger's seat lumbar adjustment; rear seat centre folding armrest; and Stereo Radio/Cassette – Model 7000 RDS EON, with remote control column stalk.

## Ghia

Additional features over GLX include electrically-operated rear windows; passenger's seat lumbar adjustment; interior wood effect finish; leather-clad four-spoke steering wheel and gear lever knob (wood effect gear lever knob on auto gearbox); electrically-operated tilt-or-slide sunroof; front reading and rear courtesy lights; and Stereo Radio/Cassette – Model 7000 RDS EON, with remote control column stalk.

## Ghia X

Additional features over Ghia include CFC-free air conditioning; leather trim; auxiliary warning system including car outline display, cruise control and trip computer (petrol only); electrically-operated 10 way driver's seat adjustment; heated front seats; and Stereo Radio/Cassette – Model 7000 RDS EON, with CD autochanger.

Interiors shown feature optional equipment.

Specification and option availability see pages 26-31.



## Tailored to suit your needs

Mondeo's dramatic lines are reflected throughout the range of three bodystyles: the 4-door saloon, 5-door hatchback and the estate. There are also seven series levels and five advanced engines to provide a choice of comfort and convenience.

4-door model.



5-door model.



Estate model.



Vehicles shown feature optional equipment.  
Specification and option availability see pages 26-31.

## Exterior and mechanical features

### Aspen

Standard features include power-assisted steering; perimeter alarm and Safeguard engine immobiliser; two stage remote-controlled central, double locking (first stage – driver's door, second stage – all doors including tailgate/boot); 'Quickclear' heated windscreen and heated washer jets (diesel only); remote fuel filler flap release; tailgate/boot exterior electronic release button (inoperative while ignition is on); tinted glass; headlight levelling (Estate only).

### LX

Standard features include 'Quickclear' heated windscreen and heated washer jets; and black bodyside mouldings.

### GLX

Standard features over LX include electronic anti-lock brakes; door mirrors with body-coloured housings.

### Si

Standard features over LX include electronic anti-lock brakes; body colour bodyside mouldings and exterior door handles; front fog lights; door mirrors with body-coloured housings; 15" wheels and sports suspension and, on 2.0i, sports gear ratios.

### ST24

Standard features over Si include 2.5i V6 engine; rear disc brakes; 16" alloy wheels and traction control.

### Ghia

Standard features over GLX include bodycolour bodyside mouldings and exterior door handles; 15" wheels; and front fog lights.

### Ghia X

Standard features over Ghia include alloy wheels.

LX





GLX



Vehicle shown features optional equipment.



Si



Vehicle shown features optional equipment.



ST24



Vehicle shown features optional equipment.



Ghia



Vehicle shown features optional equipment.



## Space without compromise



Ghia X TD shown features optional equipment.



Load capacity can be extended by simply folding the rear seats.

LX shown features optional equipment.



The 60/40 split folding rear seat enables you to carry some of life's more awkwardly shaped items.

A tonneau cover keeps prying eyes away from your luggage.





## Wheels and wheelcovers

Distinctive finishing touches are provided by the wide range of alloy wheels and wheelcovers available.



Aspen wheelcover.



LX wheelcover.



GLX wheelcover.



GLX optional alloy.



Si wheelcover.



Si optional alloy.



ST24 standard alloy.



Ghia wheelcover.



Ghia optional alloy.



Ghia X standard alloy.



Ghia X Estate optional alloy.

Left: Ghia X 4 and 5-door optional 'chrome effect' alloy.

## Factory-fitted options

The comprehensive range of options has been specifically developed for Mondeo to meet your taste and requirements.



**Air conditioning.**  
CFC-free air conditioning keeps the occupants comfortably relaxed whilst travelling. Optional on selected models, standard on ST24 and Ghia X.

**Rear spoilers.**  
The stylish spoilers integrate with Mondeo's flowing lines. Optional on selected models.



**Rear wash-wipe.**  
This option on Ghia and Ghia X 4-door models helps to maintain visibility in adverse weather conditions.



**Volume Sensing Alarm.**  
When fitted, the optional volume sensing alarm system provides an additional level of vehicle security.

Estates have rear window shatter detectors, (shown above), included with the volume sensing alarm option.



Vehicle shown features optional equipment.



## Ford Audio Systems

The latest range of advanced audio systems is now available on Mondeo, offering easy to use controls and many security features including removable control panel revealing a warning strip and flashing light, Keycode and vehicle registration memory (excluding 4000T).

**4000T AM/FM Radio/Cassette:** FM, MW, LW, RDS offering traffic announcements and automatic retune to best reception frequency, 24 presets, electronic search and autostore facility, fast forward and rewind.

**5000 RDS-EON/PTY - Radio/Cassette:** RDS with EON offering local/distant traffic information, program type, station name, electronic search, autostore, fast forward and rewind, autoreverse and automatic music search. CD autochanger compatible.

**6000 RDS-EON/PTY - CD Tuner:** All radio features of 5000 with single CD player replacing cassette offering track selection, fast search, forward/reverse, shuffle and compression. Remote control steering column stalk. CD autochanger compatible.



**7000 High Power RDS - EON/PTY - Radio/Cassette:** All features of 5000 with increased power output, soft touch controls and rotary volume control, electronic tape deck and remote control steering column stalk and \*CD Autochanger compatible.

\*Standard on Ghia X and optional on selected models.

## Ford Cellular Systems

The new Mondeo features an optional integrated central console phone housing. This has been specifically designed to afford ease of use and conceal a phone when not in use.

For more information contact Ford Cellular Systems direct on 0345 919293



## Ford Motorsport

Since its British Touring Car Championship debut in 1993, Mondeo has upheld our reputation as the most successful manufacturer in the series' 38-year history.

During the '93 - '94 seasons the Mondeo V6, driven by Paul Radisich won FIA Touring Car World Cup titles.

Team Mondeo's challenge for the 1997 Auto Trader RAC Touring Car Championship, generally recognised as the

most competitive Super Touring series in the world, is against eight major manufacturers all competing for race honours.

In Britain and across the world, Ford continues to be a formidable force in Motorsport.

**We race - you get the results.**





# Mondeo specifications

## Interior features

	Saloons & Estates	Aspen	LX	GLX	Si	ST24	Ghia	Ghia X
<b>Carpet and Trim</b>								
Carpet – Cut pile		■	■	■	■	■	■	■
Carpet – Non-slip front mats							■	■
Door bins – Front		■	■	■	■	■		
Door bins – Front and rear, carpet-covered							■	■
Door pull handle/armrest		■	■	■			■	■
Gear lever knob – Leather-covered						■	■	■
Gear lever knob – Wood-effect (automatic only)							■	■
Metallic finish instrument cluster bezel					■	■		
Wood-effect finish to instrument cluster bezel and door pulls. Rubber mat under handbrake							■	■
<b>Lighting</b>								
Courtesy lights – Header-mounted, front and rear door-operated with delayed switch-off		■	■	■	■	■	■	■
Courtesy lights – Front footwell							■	■
Courtesy lights – Front reading lights						■	■	■
Courtesy lights – Rear							■	■
Light – Luggage compartment		■	■	■	■	■	■	■
<b>Instruments and Controls</b>								
Instruments – Speedometer, odometer, trip recorder, constant read-out fuel gauge, water temperature gauge		■	■	■	■	■	■	■
Tachometer			■	■	■	■	■	■
Cruise control, 5-function trip computer and graphic information module (petrol only)								■
Warning indicators for low fuel, oil pressure, direction indicators, glow plugs on (diesel only), high beam, ignition/alternator, brake failure, handbrake on, Airbag(s), 'lights-on' audible warning		■	■	■	■	■	■	■
Illuminated heater controls – 4-speed fan. Four MicronAir filtered vents with temperature and direction control, two dedicated side window demists		■	■	■	■	■	■	■
Master lighting control – Facia-mounted		■	■	■	■	■	■	■
Control stalks – Column-mounted for indicators, main beam, dip and flash, wash/wipe functions		■	■	■	■	■	■	■
Instrument panel – Illumination control				■		■	■	■
Headlight levelling control (Estates only)		■	■	■			■	■
Steering column – Reach and rake adjustable		■	■	■	■	■	■	■
Airbag – Driver's		■	■	■	■	■	■	■
Steering wheel – Leather-trimmed					■	■	■	■
Steering wheel – Four-spoke, incorporating horn function		■	■	■	■	■	■	■
<b>Seats and Seat Belts</b> For seat fabrics see page 33								
Front seat – Driver's cushion tilt adjust		■	■		■			
Front seat – Driver's electric height adjust					■		■	■
Front seat – Driver's adjustable lumbar support, manual				■	■			
Front seat – Driver's electric 10-function seat adjustments: height, reach, cushion tilt, seat back rake and lumbar adjustment (manual lumbar adjust on passenger seat)								■
Front seats – Fully reclining with fully adjustable head restraints and side storage		■	■	■	■	■	■	■
Front seats – Sports					■	■		
Front seats – Adjustable lumbar support, manual							■	■
Storage pockets – Front seat backs		■	■	■	■	■	■	■
Rear seat – 60:40 split back		■	■	■	■	■	■	■
Rear seat – One-piece forward-tilt rear seat cushion (5-door only)		■	■	■	■		■	■
Rear seat – Folding centre armrest				■		■	■	■
Rear seats – Two head restraints, adjustable				■	■	■	■	■
Seats – Anti-submarine, front and rear		■	■	■	■	■	■	■
Seats – Leather-trimmed, with heated front seats								■
Seats – Leather-trimmed seat borders and rear seat bolsters							■	
Seat belts – Front, inertia reel, with grabbers and height-adjustable mounts. Rear, three inertia reel, lap and diagonal		■	■	■	■	■	■	■
<b>Comfort and Convenience</b>								
Accessory socket/cigar lighter		■	■	■	■	■	■	■
Air-conditioning – CFC-free						■	■	■



## EXTRA COVER

### Maintenance Plans

Your Ford Dealer can advise you on extended warranties. Extra Cover, the optional extended warranty from Ford can also incorporate Service Cover which allows you to add routine servicing or full maintenance cover to your plan.

### Petrol and diesel models

24 Months/18,000 miles
24 Months/24,000 miles
24 Months/36,000 miles
24 Months/unlimited miles*
36 Months/24,000 miles
36 Months/36,000 miles
36 Months/60,000 miles

### Selected diesel models only

36 Months/100,000 miles
* 80,000 miles for Service Cover contracts

### Note:

- All Extra Cover plans begin from the New Vehicle Warranty commencement date, irrespective of the Extra Cover sale date, and continue until the completion of the time and mileage allowance, whichever occurs first.
- Extra Cover can be purchased within 12 months of the New Vehicle Warranty commencement date.
- Service Cover can only be purchased within 2 months of the New Vehicle Warranty commencement date.

## Interior features

### Comfort and Convenience (continued)

	Saloons & Estates	Aspen	LX	GLX	Si	ST24	Ghia	Ghia X
Centre console – With pen holder, coin slots, padded lid and storage box (cassette upper, CD lower). Lid flips back to provide cup recesses		■	■	■	■	■	■	■
Clock – Digital quartz, 12/24 hour display		■	■	■	■	■	■	■
Glovebox – With lid and illumination		■	■	■	■	■	■	■
Grab handles – Three, coathooks on rear		■	■	■	■	■	■	■
Mirror – Dipping rear view		■	■	■	■	■	■	■
Storage – Facia, driver's lower, passenger's upper		■	■	■	■	■	■	■
Sunroof – Tilt/slide screened glass with soft fabric-covered blind			■	■				
Sunroof – Electrically-operated tilt/slide screened glass with soft fabric-covered blind						■	■	■
Sunvisors – Two with mirror on passenger's side		■	■	■	■			
Sunvisors – Two with mirrors, illumination and covers							■	■
Windows – Front, electrically-operated with one-shot lowering on driver's side			■	■	■	■	■	■
Windows – Rear, electrically-operated with interior door handle illumination						■	■	■
<b>Luggage Compartment</b>								
Carpet – On floor with sidewall trims. Load tie-down eyes		■	■	■	■	■	■	■
Tailgate panel – With integral handhold (5-door and Estates only)		■	■	■	■		■	■
Parcel tray – Rear, tilting/removable (5-door only)			■	■	■		■	■
Parcel tray – Rear, fixed (4-door only)			■	■	■		■	■
Tonneau cover (Estates only)		■	■	■			■	■

## Options

at extra cost

### Equipment

	Saloons & Estates	Aspen	LX	GLX	Si	ST24	Ghia	Ghia X
Airbag – Front passenger's* and adjustable rear head restraints		■	■					
Airbag – Front passenger's* and adjustable rear centre head restraint				■	■	■	■	■
Airbags – Front passenger's with side Airbags for driver and front passenger* and adjustable rear head restraints		■	■					
Airbags – Front passenger's with side Airbags for driver and front passenger* and adjustable rear centre head restraint				■	■	■	■	■
Air conditioning – CFC-free			■	■	■			
Air conditioning – CFC-free in lieu of sunroof			■	■	■			
Anti-lock brakes – Electronically-controlled		■	■					
Alarm – Volume sensing with rear side window shatter detection on estates		■	■	■	■	■	■	■
Ford Compact phone (no charge)*		■	■	■	■	■	■	■
Front seat – Driver's electric height adjust			■		■			
Heated windscreen – 'Quickclear' – with heated washer jets (standard on diesel engine)		■						
Rear spoiler					■	■	■	■
Roof rails – Integral (Estates only)			■	■				
Suspension – Self-levelling, rear, estates only		■	■	■			■	■
Towing couplings – Fixed or detachable (both with 2x7 pin electrics) (Not 1.6i)		■	■	■	■	■	■	■
Traction control (1.8i petrol and 2.0i only, standard on 2.5i)				■	■		■	■
Wheels – 6x15, 6x2 Spoke alloy (steel spare) with 205/55 VRx15 tyres				■				
Wheels – 6x15, 6 Spoke alloy (steel spare) with 205/55 VRx15 tyres					■			
Wheels – 6x15, 7x2 Spoke alloy (steel spare) with 205/55 VRx15 tyres							■	■
Wheels – 6x16, 4 Spoke alloy (15" steel spare with 205/55 VRx15 tyre) with 205/50 ZRx16 tyres (Ghia X estate)								■
Wheels – 6½x16, 12 Spoke chrome-effect alloy (15" steel spare with 205/55 VRx15 tyre) with 205/50 ZRx16 tyres (4 and 5-door only)								■
Wipers – Rear wiper with electric wash (4-door only)							■	■
<b>Audio</b>								
Stereo Radio/CD – Model 6000 RDS EON, with removable control panel, 'Keycode' anti-theft coding, 4 speakers (CD replaces cassette). Remote control steering column stalk			■	■	■			
CD Autochanger, 6 disc – Model 2062							■	■
<b>Body Colour</b>								
Paint – Metallic		■	■	■	■	■	■	■

### \* Note

A rear-facing child seat should never be placed in the front passenger seat if the Ford vehicle is equipped with a front passenger or side Airbags.

\* Subject to status and the signing of a 12 month airtime contract. The contract may be terminated by giving 30 days written notice after the end of the 12 month period. Available in conjunction with the purchase in the UK of a new Ford vehicle (excluding the Channel Islands and Isle of Man, named daily rental companies (Avis, Hertz, Budget, Eurocar, Euro Dollar, Flightform, Thrifty and their licensees/agents and Daily Rental), Ford and Dealer demonstrator programme vehicles, FRCS/Service rental vehicles, direct service vehicles).



# Ford and Ford Credit Services

We have established a dedicated range of services that meets the needs of both business and private motorists. Each service has been specifically tailored to provide you with expert help and advice. So, whether you're in the process of buying a new car, acquiring parts and accessories or simply organising a routine service, you'll find our network of over 1000 Dealerships are there to make your life easier.



**EXTRA  
COVER**

## Ford Aftercare Services

Every new Ford car is covered by a 12 month, unlimited mileage Warranty. This can be further enhanced for one or two years by Ford Extra Cover – the Ford optional extended Warranty plan.

The bodywork of all Ford cars is covered against corrosion for 12 months and against perforation caused by faulty manufacture or materials for six years.



## The Ford Commitment

Ford Commitment gives you complete protection for your new vehicle and is valid for 12 months from the date of registration.

The benefits include a replacement or refund scheme, 24 hour RAC UK and European Roadside Assistance and the Ford Customer Assistance Centre Helpline.

For terms and conditions of this scheme please **call The Ford Mondeo Information Service** or contact your Ford Dealer.

## Customer Order Price Protection Plan

The price on your order is guaranteed for 3 months from the date of your order.



## Rapid Fit

Rapid Fit offers you the convenience of a "no-appointment necessary, while-you-wait" service for routine maintenance work.

## Tax Free Sales

Most cars in the Ford range are available for Tax Free Personal Export.



## Ford Credit

Ford Credit finances every second new Ford car sold in Britain.



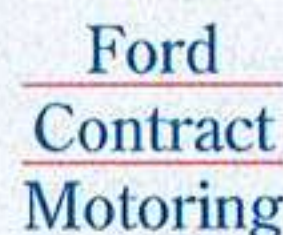
## Options

Options is an innovative way for customers to drive a new Ford more often for less than you thought possible.



## Ford Acumen

Ford Acumen Personal Leasing Plan is the intelligent way to drive a new Ford more often. An innovative personal leasing plan provides you with a way to drive a new Ford every two years (subject to status).



## Ford Contract Motoring

Combining the benefits of contract hire with a national service network.



## Ford MotorQuote

MotorQuote car insurance service offers Ford customers a guaranteed quotation at an affordable price.

## Value Guaranteed Insurance

Value Guaranteed Insurance (VGI) is a new insurance product from Ford Credit which gives motorists added protection.



## Motability

Ford is fully committed to the needs of the disabled, and their carers, through the Motability programme.

**Call The Ford Mondeo Information Service  
on 0345 111 777**

There are terms and conditions applicable to all these programmes. For further details, clarification or copies of literature available please call the above telephone number.

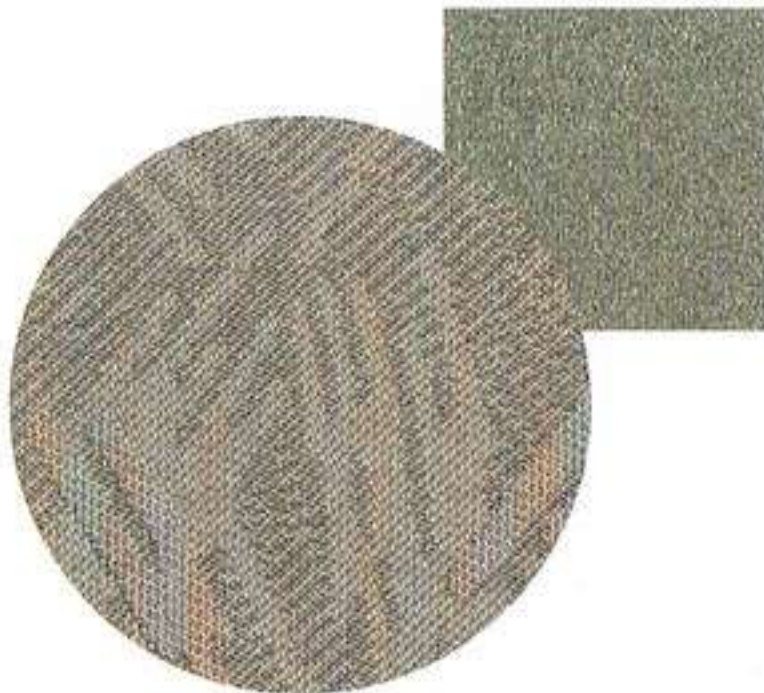
Finance is provided subject to status to over 18s only. Written quotations are available on request from Ford Credit Europe plc, PO Box 46, Brentwood, Essex, CM13 3AR. Guarantees and Indemnities may be required. Certain categories of business user do not qualify for the Options or Ford Acumen plan.



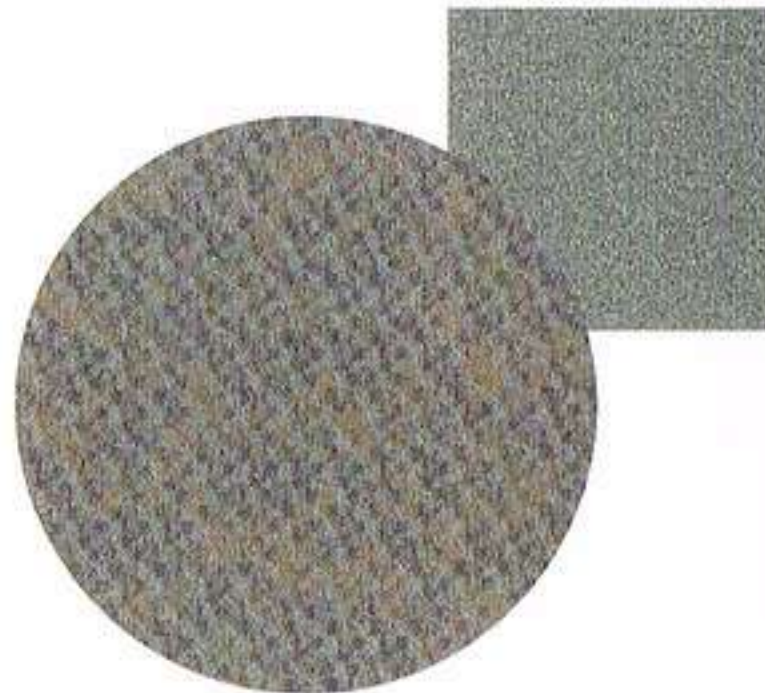
# Interior Trims



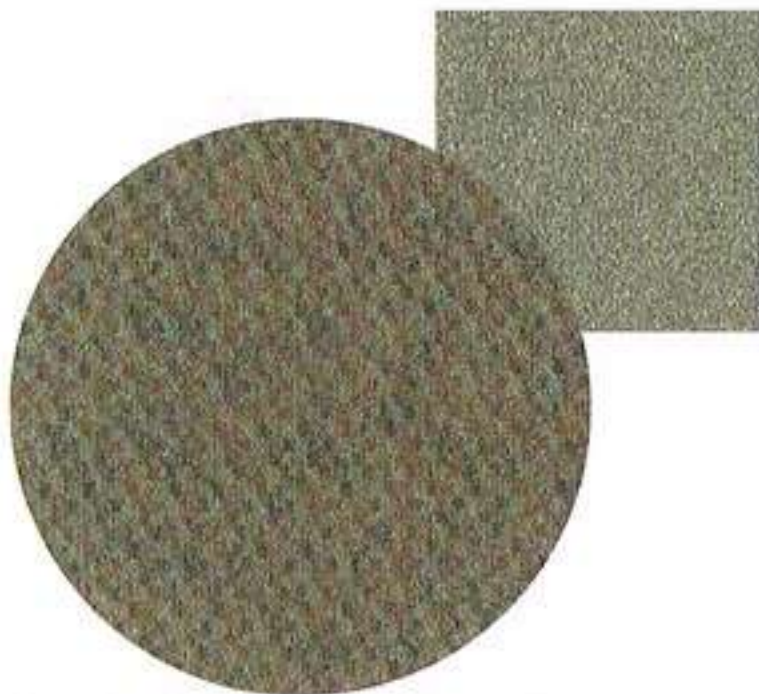
Flight in Opal complemented by plain Opal Velour seat sides.



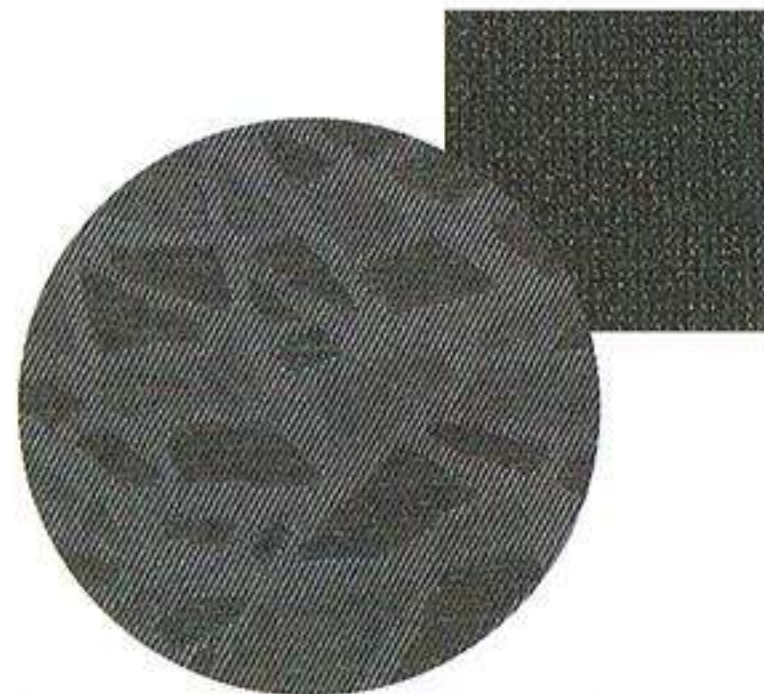
Flight in Medium Dark Truffle complemented by plain Medium Dark Truffle Velour seat sides.



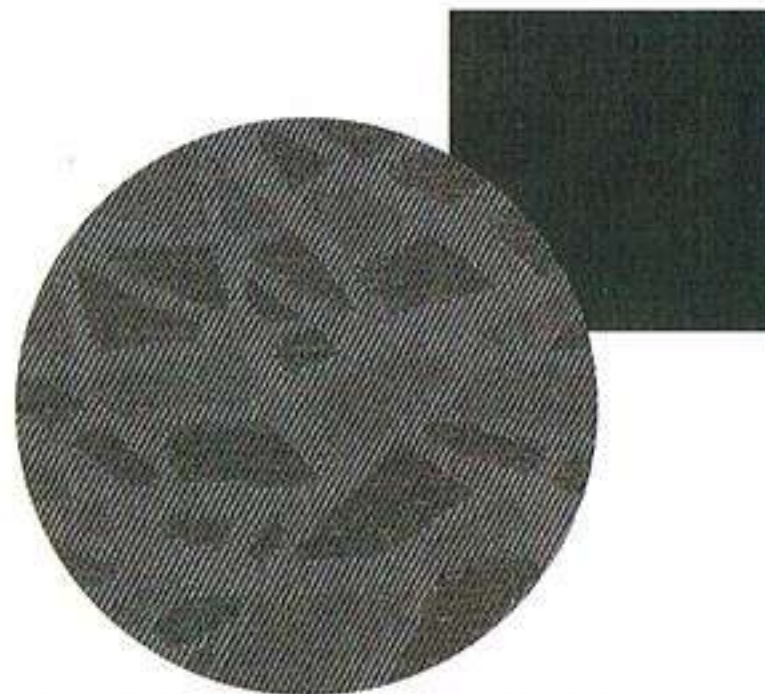
Liberty in Opal complemented by plain Opal Velour seat sides.



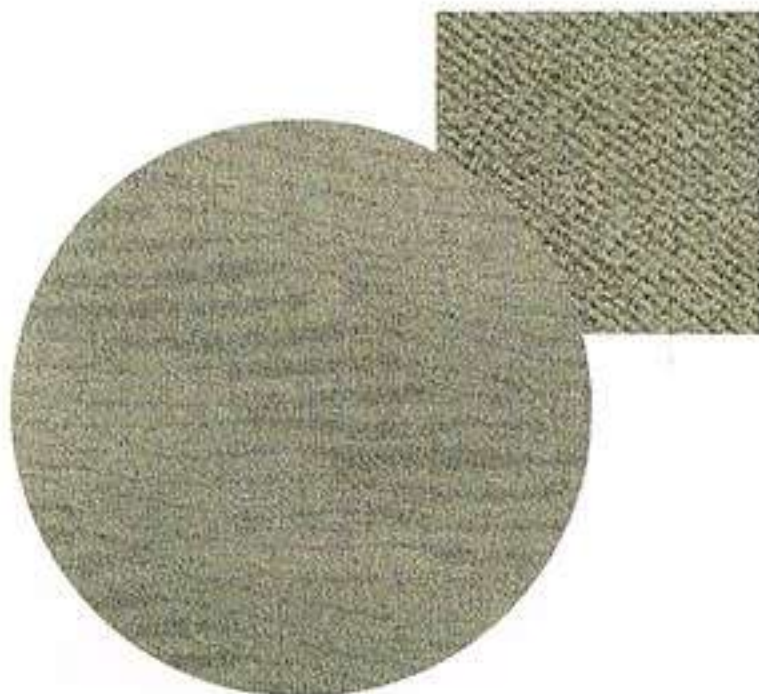
Liberty in Medium Dark Truffle complemented by plain Medium Dark Truffle Velour seat sides.



Kappa in Alchemy complemented by plain Alchemy Fabric seat sides.



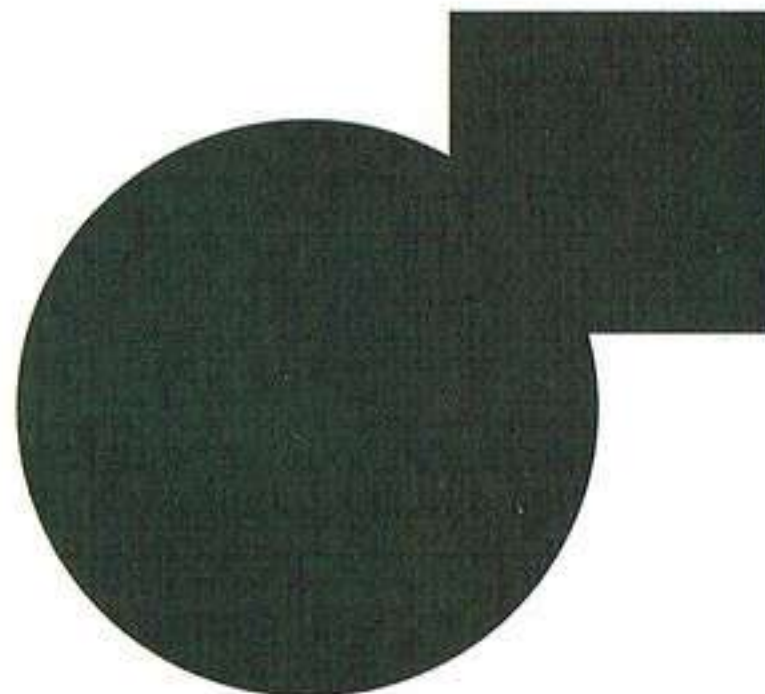
Kappa in Alchemy complemented by Alchemy Leather seat bolsters and 'leather-effect' seat sides.



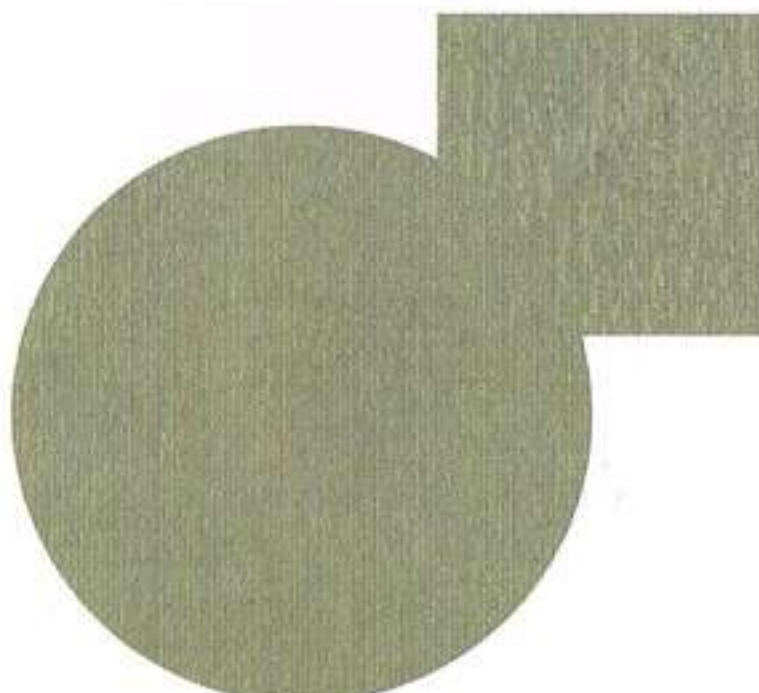
Dune in Medium Dark Truffle complemented by plain Medium Dark Truffle Velour seat sides.



Dune in Alchemy complemented by plain Alchemy Velour seat sides.



Leather in Alchemy complemented by Alchemy 'leather-effect' seat sides.



Leather in Medium Dark Truffle complemented by Medium Dark Truffle 'leather-effect' seat sides.

# Body Colours



Diamond White



Belladonna



Radiant Red



Panther Black



Stardust Silver



Tourmallard Green



Juice Green



Dark Aubergine



Cuirass



Electric Current Red



Mistral Blue



Samakand



Astor Grey



State Blue



Petrol Blue

## Body colour and trim availability

Model	Seat Fabric	Solid Body Colours			Metallic Body Colours (Extra Cost)											
		Diamond White	Belladonna	Radiant Red	Panther Black	Stardust Silver	Tourmallard Green	Juice Green	Dark Aubergine	Cuirass	Electric Current Red	Mistral Blue	Samakand	Astor Grey	State Blue	Petrol Blue
Aspen	Flight	0	0	0		0										0
LX	Flight	T	0	T	T	T	T	T	T	0	T	0	0	0		0
GLX	Liberty	T	0	T	T	0	T	0	T	0	0	0	0	0		0
Si	Kappa	A		A	A	A	A	A	A	A						A
ST24	Kappa/Leather	A		A	A	A	A	A	A	A				A		
Ghia	Dune	A/T		A/T	T	T	T	T	A	T			A	A	A	
Ghia X	Leather	A/T		A/T	T	T	T	T	A	T			A	A	A	

SEAT FABRIC COLOUR KEY: A – Alchemy  
0 – Opal T – Truffle / – Choice of fabric

**Note:**  
The car images used are to illustrate body colours only and may not reflect current specification.

Colours and trims reproduced on these pages may vary from the actual colours due to the limitations of printing processes used.







**The Government fuel figures** do not express or imply any guarantee of the fuel consumption of any particular car. The cars themselves have not been tested and there are inevitably differences between individual cars of the same model. In addition, a car may incorporate particular modifications. Furthermore, the driver's style and road and traffic conditions, as well as the extent to which the car has been driven and the standard of maintenance, will affect its fuel consumption.

**Insurance Groups** are only as recommended by the Association of British Insurers. You should always consult your insurance adviser for confirmation.

**Illustrations, descriptions and specifications.** This catalogue was correct at the time of going to print. However, Ford policy is one of continuous product development. The right is reserved to change specifications, colours and prices of the models and items illustrated and described in this publication at any time. For the latest details always consult your Ford Dealer.

**Optional Equipment.** Throughout this publication, wherever a feature is described as being an 'Option' or 'Optional Fitment/Pack' etc, you should assume that it will be at extra cost to the base vehicle, unless specifically stated to the contrary.

Designed and produced electronically by  
Allan Burrows Limited, Ingatestone, Essex.

Printed Web Offset by Jarrold Printing, Norwich

**Published by**  
**Ford Motor Company Limited,**  
**Brentwood, Essex, England.**  
**Registered in England No 235446**

**FA1262/4**

**January 1997.**

**© Ford Motor Company Limited.**

This publication is printed on Luminova, a low chlorine paper produced from renewable forest resources. Modern bleaching technology is used in the pulping process and the waste waters are effectively purified by biological cleaning methods. This choice of paper is a further expression of Ford's concern for the environment.

Your Ford Dealer

