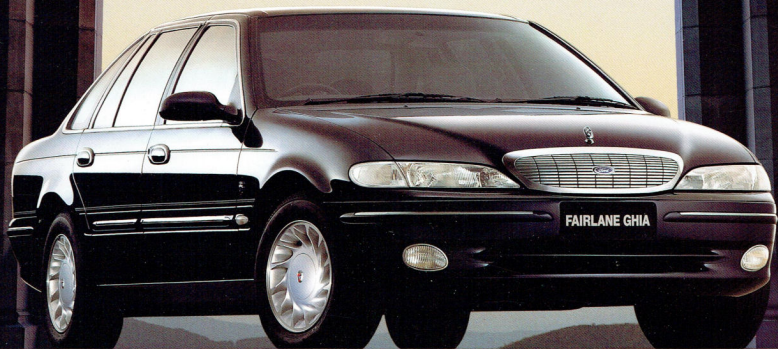


*Ford
Fairlane
Ghia*



The spirit of luxury and refinement.

Introduction	2
Engineering	4
Interior Design	8
Safety and Security	10
Options	11
Ford Prestige Service Plan	11
FordCare	12
Accessories	12



Fairlane Ghia in Ebony Blue

INTRODUCTION

There's a spirit at Ford dedicated to producing a vehicle that recognises and rewards achievement. A spirit of continuous improvement. It leads us to higher standards

of quality, safety and owner satisfaction.

This spirit has inspired the latest Fairlane Ghia. From the superb comfort of the redesigned seats to the upgraded ride and handling package and the magnificent interior

that's now even quieter, you'll find this Fairlane Ghia is the most luxurious, the most refined and the most rewarding that we've ever built.

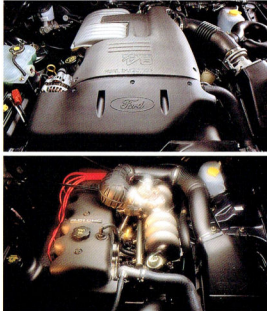
Fairlane Ghia, Australia's most distinguished luxury

car, has long delivered world class standards of quality, craftsmanship and engineering. Finding new and innovative ways to take those standards to even higher levels... that's the spirit at Ford.



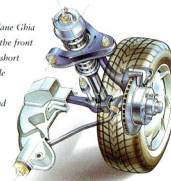
Fairlane Ghia is fitted with an advanced electronically controlled 4-speed automatic transmission that allows you to switch between "normal" and "economy" modes depending on the style of driving you prefer.

Ford's advanced 4.0 litre 6-cylinder engine and optional 5.0 litre V8 engines are computer-managed to deliver high power and torque outputs with efficiency and smoothness. The 4.0 litre six develops 157 kW @ 4900 rpm. The Ford 5.0 litre V8 produces 165 kW @ 4500 rpm.



Fairlane Ghia has the power and strength to do all the things you want to do – like tow that boat or van or haul a trailer.

Here's a reason why Fairlane Ghia really enjoys the road ... the front suspension is the reliable short and long arm, long spindle (SLAS) system tuned to keep harshness and road noise at low levels. Fade resistant 4-wheel disc brakes provide efficient stopping power.



Excellence in engineering.

ENGINEERING

Fairlane Ghia's very long legs have always been appreciated by those who travel many country kilometres. Now, on the open road or around town, you're sure to enjoy

the numerous revisions we've made to the steering and suspension geometry.

You'll notice how Fairlane Ghia soaks up the bumps, yet remains taut and responsive. In corners, body roll is

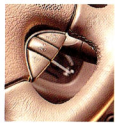
minimal and stability is maintained, even with every seat occupied and the boot full of luggage.

The handling matches the capability of Ford's powerful and efficient 6-cylinder or optional V8 engine.

The revised power rack and pinion steering, now speed sensitive, delivers an excellent feeling of control – it's quick, responsive, with a positive feel. There's no doubt, Fairlane Ghia truly enjoys the road!



Ferrari 430 interior equipped with optional leather trim and power driver's seat, Cappuccino interior.



Relax – Fairlane Ghia gives you cruise control.



Set-and-forget. Climate control with CFC-free air conditioning.



Quality audio system includes CD player.



Steering column adjusts for personal comfort.



Trip computer calculates fuel and distance data.



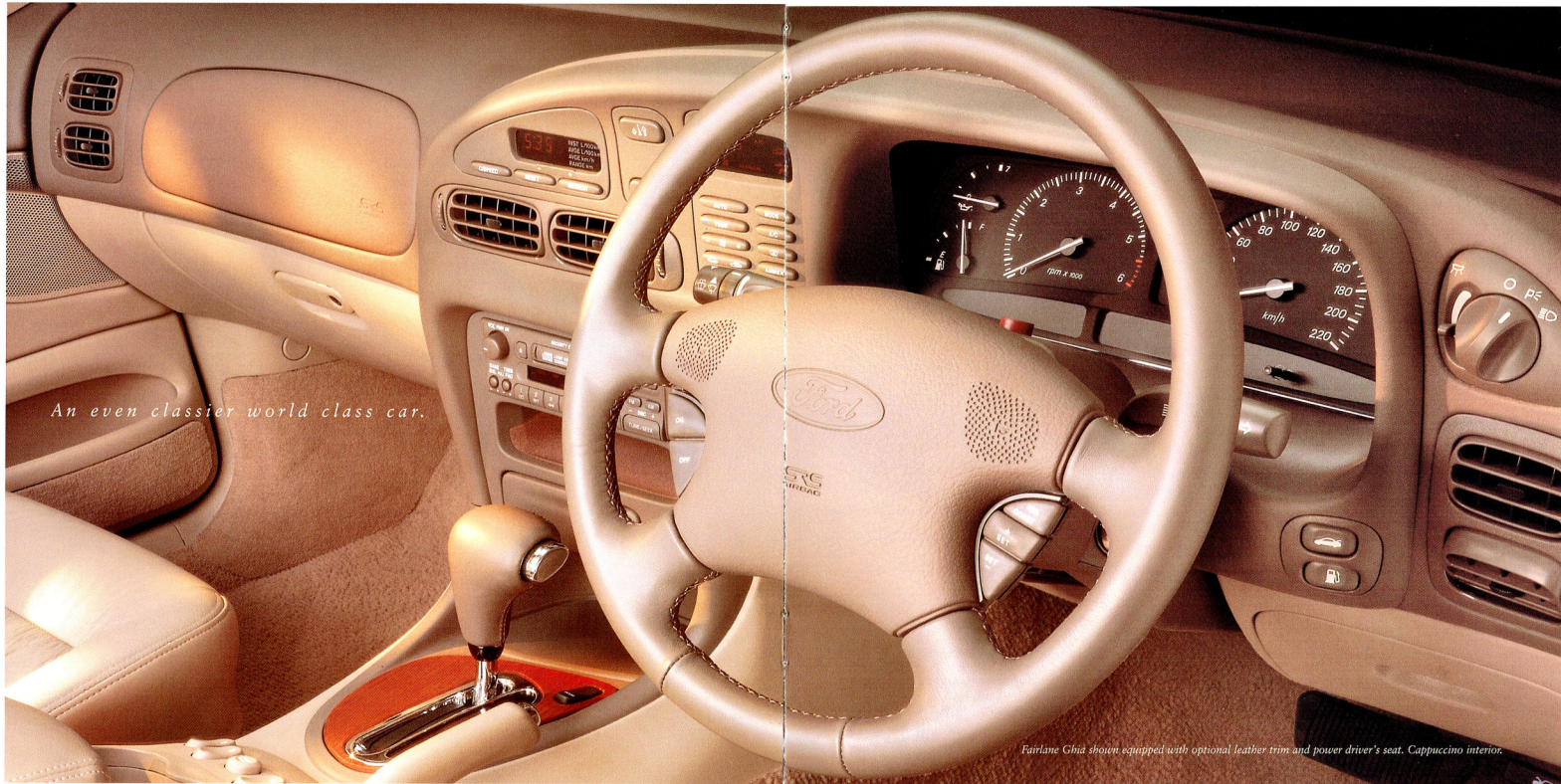
Cup holder convenience. Anyone for coffee?



Fairlane Ghia's luxurious seats. (Leather trim optional.)



60/40 split fold backrest handles awkward objects.



An even classier world class car.

Fairlane Ghia shown equipped with optional leather trim and power driver's seat. Cappuccino interior.

INTERIOR DESIGN

Ford's commitment to continuous improvement adds even more class to a world class luxury sedan. The latest Fairlane Ghia interior is an inspired combination of

luxury, refinement and ergonomic efficiency.

Redesigned seats provide an ideal balance of softness and support, and feature the latest fabric in a fashionable pattern. The seats provide numerous comfort adjustments.

(Full leather trim, with a power adjustable driver's seat, is available as an option.)

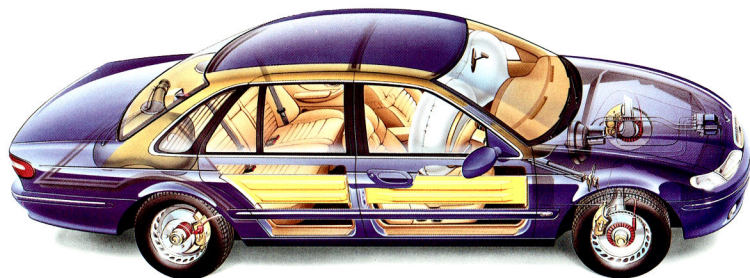
Easy on the body, easy on the eyes. Many of the Fairlane Ghia interior appointments, like the switches and

buttons, audio system, seat belts and door trims are now colour-keyed to create a beautifully aesthetic and co-ordinated environment. An environment that also displays a tasteful use of wood grain.

Some people feel safer in a full size car. With Ford, safety is more than a mere perception. It's a fact. Ford's uncompromising commitment has seen Fairlane Ghia evolve into one of the safest cars on the road.

Included in Fairlane Ghia's long list of standard safety equipment are airbags for the driver and left front passenger and 4-wheel power disc brakes with new generation Anti-lock Braking System (ABS).

Fairlane Ghia is equipped with airbags for the driver and left front passenger. Sensors in the vehicle detect the severity of an impact. If the collision meets the criteria for deployment, the driver airbag and passenger airbag will inflate and be released.



The passenger compartment features side intrusion beams, and integrated front and rear crumple zones.

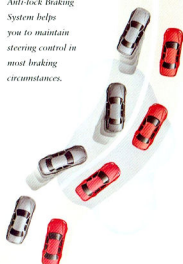


Fairlane Ghia has 'best in class' roof crush strength.



Height adjustable front seat belts, with belt lockers to minimise payout of seat belt webbing in extreme conditions.

The new generation Anti-lock Braking System helps you to maintain steering control in most braking circumstances.



Smartlock engine immobilisation and keyless entry.

6FPAAAJGWA146173

Major vehicle components are permanently marked with an exclusive Vehicle Identification Number.

Tickford Vehicle Engineering, Ford's partner in performance-enhanced vehicles, offers these options. They're backed by the Ford 24 month/ 50,000 km Express New Vehicle Warranty when fitted prior to delivery.



power on petrol or LPG! Developed jointly by Ford and TVE and tuned specifically for Fairlane Ghia, this LPG system is covered by the Ford 24 month/ 50,000 km Express New Vehicle Warranty.

SUNROOF

Precision crafted electric glass sunroof with sliding sun shade, fully imported from Germany. (Note: sunroof fitment will reduce occupant head room.)

2300 kg RATED TOW PACK*

Heavy Duty Towbar and Load Distributing Hitch, trailer wiring kit, revised turn signal flasher, transmission oil cooler.

HEAVY DUTY TOW PACK*

For those who already have a 2100 kg or 2300 kg Load Distributing Hitch. Heavy Duty Towbar (2300 kg rated when used with 2300 kg Load Distributing Hitch), trailer wiring kit, revised turn signal flasher, transmission oil cooler and a 1600 kg rated capacity plug-in tow ball mount.

* Subject to State and Territory regulations.

TOURING SUSPENSION

Lower, stiffer front and rear springs, re-tuned shock absorbers, stiffer stabiliser bars and upgraded bushes, revised rear suspension geometry and front wheel alignment.

MOMO STEERING WHEEL

Sculpted leather bound steering wheel for the ultimate in feel and control.

16" WHEELS AND TYRES

A choice of two 16" x 7" alloy wheel designs fitted with high performance Yokohama 510 series 225/50 VR 16 tyres for exceptional wet and dry road grip. (Available only in combination with Touring Suspension.)

LPG

With this LPG system, Fairlane Ghia delivers the same

FORD PRESTIGE SERVICE PLAN

The Ford Prestige Service Plan is part of Fordcare and is exclusive to owners of Ford prestige vehicles like Fairlane Ghia.

It provides assistance and peace of mind for three years. Among the many benefits offered in the event of mechanical breakdown are:

- 24 hr Emergency Roadside Assistance.
- Emergency towing and vehicle recovery service.
- One night's free emergency accommodation for up to 5 people.
- Free emergency rental car assistance in certain circumstances.
- General assistance with medical matters.
- Assistance with cancellation or re-booking of

any pre-arranged travel and accommodation.

- Urgent message relay anywhere in Australia.

If a mechanical breakdown occurs, these special services can be accessed 24 hours a day, 365 days a year via a toll-free hotline.

The number is clearly shown on your personal owner identification card which you will receive with your Ford Prestige Service introduction pack.

Also, to help you arrange routine servicing, the Ford Prestige Service Plan provides a central booking facility for any Authorised Ford Dealership you choose.

If your Fairlane Ghia spends more than 24 hours at the servicing Dealership for warranty repairs, a free loan vehicle will be available until your car is ready.



FAIRLANE & LTD COLOUR RANGE

Dynamic White

Sparkling Burgundy

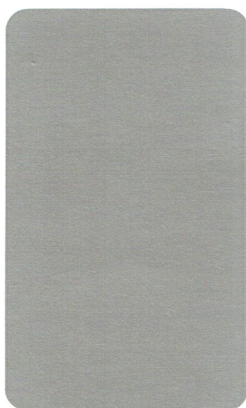
Regency

Argon Silver

Gunmetal



Navy Blue



Mocha Foam



Arctic Blue



Heritage Green



COLOUR AND TRIM COMBINATION

EXTERIOR COLOUR	INTERIOR COLOUR	FAIRLANE GHIA		LTD
		MAKO GREY	CAPPUCCINO	CAPPUCCINO
DYNAMIC WHITE		O	O	✓
SPARKLING BURGUNDY		O	✓	✓
HERITAGE GREEN		O	✓	✓
ARCTIC BLUE		✓		
REGENCY		O	✓	✓
GUNMETAL		✓	O	✓
ARGON SILVER		✓		✓
MOCHA FOAM			✓	✓
NAVY BLUE		✓	O	✓

O = Available combination.

✓ = Recommended combination.

Standard Interior Trim: Fairlane Ghia – Mosaic Velour
 – Optional leather interior trim
 LTD – Howe Leather
 – Optional Baroque Velour

PLEASE NOTE: The paints, colours, trims, combinations and information described depicted and referred to in this selector are to be used only as a general guide in the selection of a vehicle. Vehicle paint colours will differ in varying degrees from those depicted herein.

Ford Motor Company of Australia Limited reserves the right at any time and without notice to discontinue or change the specifications descriptions colours and designs of the paints, colours, trims and combinations thereof as described and referred to herein, to add or delete any paint colour, trim or combination thereof to or from the range described or referred to herein and to temporarily suspend or restrict the use of any paint colour, trim or combination thereof listed or referred to herein without incurring any liability whatsoever for so doing.

Always consult your Authorised Ford Dealer for the latest information on the availability of paints, colours, trims and combinations before deciding to place an order for a vehicle.

DKG

PRINTED JULY 1996

Ford Fairlane Ghia Specifications

FORD FAIRLANE GHIA

Engine	4.0 litre I6 Multipoint EFI	5.0 litre V8 Multipoint EFI
Bore & Stroke mm	92.26 x 99.3	101.6 x 76.2
Cylinder Head	OHC aluminium alloy	OHV cast iron
Displacement cc	3984	4942
Compression Ratio	9.3:1	9.0:1
Fuel System	Electronic fuel injection controlled by EECV engine management system	
Fuel Required	Regular unleaded	Regular unleaded
Max Power DIN kW/rpm	157/4900	165/4500
Max Torque Nm/rpm	357/3000	388/3000

Battery Rating

Cold cranking amperes	400
Reserve capacity	95 minutes
Amperes hour	53

Suspension

Front	Rear
<ul style="list-style-type: none"> Short and Long Arm, Long Spindle (SLALS) design Single rate coil springs Twin tube telescopic shock absorbers mounted co-axially within the coil spring Stabiliser bar 	<ul style="list-style-type: none"> Rigid axle 4 trailing arms with Watts Linkage Single rate coil springs Twin tube telescopic shock absorbers mounted co-axially within the coil springs Stabiliser bar Auto self levelling rear suspension

Brakes

FRONT: Power assisted ventilated disc : 287mm
REAR: Power assisted disc : 299mm

Dimensions

Exterior (mm)	
Overall length	5122
Overall height	1428
Overall width	1861 (g)
Wheelbase	2919
Front track	1566
Rear track	1547
Front overhang	919
Rear overhang	1283

Interior (mm)

Front headroom	974
Front legroom	1081
Front shoulder room	1514
Rear headroom	985
Rear legroom	1084
Rear shoulder room	1503

General

Kerb weight (kg)	1642 (c)
Luggage capacity (litres)	492
Fuel tank capacity (litres)	68
Min turning circle (m) - diameter	11.29

Selected Fuel Consumption Data

Engine/Transmission/Bodystyle	City Cycle (l/100km)	Highway Cycle (l/100km)
4.0 L MP EFI Auto Fairlane Ghia	13.0	8.0
5.0 L MP EFI Auto Fairlane Ghia	14.5	9.0

These figures are obtained from controlled laboratory tests conducted by Ford Motor Company of Australia Limited to Australian Standard AS2877 and are provided to assist you in comparing the fuel consumption of Fairlane with other vehicles. **The actual fuel consumption you achieve will depend, however, on many factors, including your driving habits, the prevailing conditions and your vehicle's equipment, condition and use.**

Optional Equipment

Option	Fairlane Ghia
Car alarm (e)	OPT
1600 kg rated tow pack (a)	OPT
Heavy duty tow pack (a)	OPT
2300 kg tow pack (a)	OPT
Prestige paint (b)	NCO
Sunroof (h)	OPT
Touring suspension	OPT
16" alloy 5 spoke wheels with Yokohama P225/50 ZR16 tyres (d)	OPT
16" closed face alloy wheels with Yokohama P225/50 ZR16 tyres (d)	OPT
Limited slip differential	OPT
LPG (i)	OPT
Leather seat trim / power seat (f)	OPT
Momo steering wheel - 4 spoke	OPT

Engine/Transmission Combinations

4.0 litre Multipoint EFI 4 speed auto	STD
5.0 litre Multipoint EFI 4 speed auto	OPT

Towing Capacity (Subject to applicable legislation and tow bar capacity)

Transmission	Ford Approved 1600 kg Rated Tow Pack (Flat Tongue Bar)	Ford Approved Heavy Duty Tow Pack (with 1600 kg Rated Ball Mount, Square Tube Bar)	Ford Approved 2300 kg Tow Pack (with Load Distributing Hitch, Square Tube Bar)
4 speed auto	1600 kg *	1600 kg *	2300 kg *

* Without the Ford approved Tow Pack, the towing capacity is 500 kg.

STD Standard equipment
OPT Optional at extra cost
NCO No cost option
N/A Not available

Footnotes:

- The Tow Packs are fitted to the vehicle by or for Ford and provide the specified towing capacities when used in accordance with the instructions in the Ford Owners Manual. Each Tow Pack consists of:
 - Tow bar
 - Hitch and/or ballmount
 - Wiring harness with 'flat' 7-pin electrical connector
 - Coupling turn signal flasher
 - Supplementary transmission cooler (automatic transmissions only)
 Note: Other items such as the caravan or trailer braking system, tow ball, safety chains, etc. are required for the attachment of a caravan or trailer to the towbar or hitch, are not supplied as part of the Tow Pack and must be purchased at extra cost or be supplied by the purchaser of the vehicle. An accessory towbar is also available from your Authorised Ford Dealer, fitting to be arranged by the purchaser. If the vehicle is to tow a gross weight of more than 500kg the appropriate Ford Approved Tow Pack must be fitted. Consult your Authorised Ford Dealer for the latest information with respect to the specifications and the availability of the accessory towbar.
- Consult the Ford colour selector or your Authorised Ford Dealer to determine which colours are available in the prestige paint range. Prestige paint is available at no extra cost.
- Approximate kerb weight for Fairlane Ghia fitted with 4.0 litre MP EFI.
- Available only in conjunction with Touring Pack.
- The Car Alarm is available as a Dealer fitted option.
- Power seat fitted to Fairlane Ghia - right hand driver bucket seat.
- Excluding exterior mirrors.
- Sunroof fitting will reduce occupant headroom.
- Available on six cylinder automatic only.

About this specification sheet. This sheet is designed to provide you with selected specification data for the Ford Products which have been described in a general way in the relevant brochure. Because of changes in conditions and circumstances Ford reserves the right, subject to all applicable laws, at any time at its discretion, and without notice to discontinue or change the features, designs, materials, colours and other specifications and the prices of its products, and to either permanently or temporarily withdraw any such products from the market without incurring any liability to any prospective purchaser or purchaser. Because of variations which occur in manufactured products, all capacities, measurements, dimensions and weights quoted in the relevant brochure and this specification sheet should be taken as approximate only. Always consult an Authorised Ford Dealer for the latest information with respect to features, specifications, prices, optional equipment and availability before deciding to place an order.

*FORD MOTOR COMPANY
OF AUSTRALIA LIMITED
(A.C.N. 004 116 233)
Registered office:
1735 SYDNEY ROAD,
CAMPBELLFIELD, VICTORIA, 3061.



HAVE YOU DRIVEN A FORD ... LATELY?

Standard Equipment: Ford Fairlane Ghia

MECHANICAL

- 4.0 litre OHC engine with multipoint electronic fuel injection and computer torque control
- Electronic engine control (EECV) system
- 4 speed electronically controlled floor automatic transmission with lock-up torque converter, optional economy mode and overdrive
- Short and long arm, long spindle front suspension
- Auto self levelling Watts Link rear suspension
- Front and rear stabiliser bars
- Four wheel disc brakes with asbestos free pads
- Anti-lock braking system (ABS)
- Power assisted rack and pinion steering
- Speed sensitive power steering

EXTERIOR

- Body coloured exterior door handles
- Full body coloured front and rear bumpers including body colour inserts with chrome highlights
- Bright chrome hood mounted grille
- Wide section colour keyed bodyside protection mouldings with chrome inserts
- Door B pillar black outs
- P205/65 HR15 steel belt radial ply tyres
- 15"x7" alloy wheels with centre cap
- Clear turn signal lamps
- Colour keyed foldaway exterior rear view mirrors with electric remote control
- Front cornering lamps
- Chrome window surrounds
- High jewel polycarbonate headlamps with twin pocket high beam
- Rear high mounted stop lamp
- Twin chrome exhaust tips
- Chrome front bonnet Ghia emblem
- Ducted air intake system
- Chrome swingaway bootlid back cover
- Full width boot lid applique with rear chrome number plate surround
- Body coloured licence plate lamp
- Integral phone aerial base with wiring and aerial included
- Styled bodyside pinstriping
- Wide-angle left hand rear view mirror
- Deletion of left hand front door exterior key lock for improved security

INTERIOR

- "Smart Lock" electronic engine immobilisation and keyless entry system
- High security locking system featuring "Tibbe" locks on door, ignition and boot, recessed door lock buttons and strengthened steering column lock housing
- Battery saver feature

INTERIOR (continued)

- Rear window demister with timed automatic switch off feature
- Rear window demister with timed automatic switch off feature
- Full tinted laminated windscreen with tinted band
- Smart tint UPF 15+ side and rear glass
- Digital clock with trip computer display including overspeed warning
- Mako Grey trim or Cappuccino Trim available (restricted trim/colour combinations exist)
- Standardised child seat anchorage bolt fitted
- Full inner bootlid trim

Driver

- Driver and passenger air bag
- Deluxe leather wrapped steering wheel incorporating cruise control switches and horn
- Adjustable rake and reach steering column
- Prismatic day/night interior rear view mirror
- Floor mounted park brake with chrome button
- Two speed front windscreen wipers with road speed sensitive variable intermittent wipe
- Ignition lock illumination
- Driver's left footrest
- Variable intensity instrument lighting switch
- Warning lights: High beam, Rear window demister on, Turn signal/hazard, Alternator, Suspension check, Economy mode indicator, Low oil pressure, Airbag, Seat belt, Brake failure, ABS, Security, Lamps on, Service Indicator, Park brake on, Washer fluid low, Radiator fluid low, Fuel low, High temperature, Cruise control indicator, Car outline diagram for Door, Boot, Fuel filler door open
- Audible warning chimes: Low fuel, Lights on, Low oil pressure, High engine temperature, Suspension check, Turn signals, Service interval reset acknowledgement, Brake and tail lamp out warning, Overspeed warning
- Gauges: Speedometer, Odometer, Service indicator, Tripmeter and fuel gauge, Water temperature gauge, Tachometer, Oil pressure, Battery voltage, PRNDL indicators
- Colour keyed switches, buttons and radio
- Cruise control
- Dual horns
- Power windows with time delay after key off
- Remote fuel filler release
- Remote boot release
- Power antenna with half/full height function
- Driver air bag / Passenger air bag
- Floor mounted vinyl wrap park brake with chrome button
- Power window over ride switch
- Soft feel T-bar handle with chromed button and stalk

INTERIOR (continued)

Seating

- Seats trimmed in Mosaic velour with Valetta velour sides, skirt and back
- Valetta velour door trim and padded inserts
- Large centre console with power window controls, centre armrest and drink cup holders
- Driver and passenger seat fore and aft adjustment
- Driver and passenger seat infinite adjustable recline
- Driver's seat thigh and height adjustment (power seat optional)
- Vertically adjusted lumbar for driver and passenger
- Front and rear adjustable headrests
- 60/40 split fold down rear seat backrest with large centre armrest
- Front inertia reel seat belts with "belt lockers", rear inertia reel lap sash seat belts for all passengers
- Colour keyed seat belts
- Padded front and rear arm rests
- Adjustable B pillar seat belt anchorages for front seat driver and passenger

Cabin Comfort

- Electrically adjustable exterior rear view mirrors
- Cloth covered sunvisors with passenger vanity mirror and light
- New woodgrain door/console applique
- Driver and passenger pleated seat back map pockets
- Integrated grab handles and coat hooks
- Moulded cloth covered headlining
- Carpeted passenger and luggage compartment floor
- Interior light with map reading lamps
- Door trim courtesy lamps
- Remote illuminated entry and exit system
- Rear reading lamps
- Front and rear door entry lamps
- Rear footwell lamp
- Luggage compartment lamp
- Illuminated front cigar lighter and ashtray
- Illuminated, lockable and flock lined glove box
- Power door locks with remote keyless entry
- Childproof rear door locks
- Automatic climate control system with integrated CFC (chloro fluoro carbons) free air conditioning with rear seat ducts and auto temperature control
- Chrome interior door handles
- Front and rear door carpeted map pockets/storage compartment
- Deluxe 60 watt AM/FM stereo cassette deck with 8 speaker elements with boot mounted 6 stack CD player with security code feature

HAVE YOU DRIVEN A FORD...LATELY?

FORD FAIRLANE GHIA



FORD APPROVED ACCESSORIES

When these accessories are fitted by your Authorised Ford Dealer before you take delivery, they're covered, reassuringly, by Ford's 24 month/50,000 km Express New Vehicle Warranty – just

like your new Fairlane Ghia itself. Your Authorised Ford Dealer can help you select from a wide range of Ford Approved Accessories that have been designed to add greater

functionality, more protection or even a touch of personal flair to your new vehicle. Here are six selected Ford Approved Accessories you might like to consider right now:



SMART BULL BAR
Provides outback protection. Designed to be fully compatible with the airbag safety system and conform to Australian Design Rules.



BONNET PROTECTOR AND HEADLAMP GUARDS
Help to prevent stone damage. Headlamp guards are photometrically tested to comply with Australian Design Rules.



1600 kg TOWBAR*
Designed to comply with Australian Design Rule (ADR 62) specification.



MUD SPATS
Look good and help to keep slush and road spray off the bodywork. Available for front and rear.



SECURITY SYSTEM
The only car alarm system approved by Ford. Designed to integrate with Fairlane Ghia's standard Smartlock keyless entry and engine immobilisation system.



1600 kg HEAVY DUTY TOWBAR*
Addition of a load levelling hitch (purchased separately) increases capacity to 2300 kg. Designed to comply with ADR 62.

* Subject to State and Territory regulations.

FORDCARE. OUR COMMITMENT TO YOUR SATISFACTION

12



Fordcare is a whole range of programs, products and services designed to make Ford owners the most satisfied motor vehicle owners in Australia.

The well-being of your Ford is supported by these warranties and services:

The Ford 24 month/50,000 km Express New Vehicle Warranty.*



Covers your Ford against defects in factory materials or workmanship for the first 24 months or 50,000 km – whichever occurs first. When fitted at or prior to the time of vehicle purchase, Ford Approved Accessories are also covered by the Ford 24 month/50,000 km Express New Vehicle Warranty.

*Conditions apply.

Five Year Perforation Corrosion Warranty.*

Covers the original vehicle's body against perforation corrosion for the first five years of its life.

Lifelong Panel Warranty.*



Covers replacement of outer body panels against perforation corrosion for the life of the vehicle.

Ford Customer Assistance Centre.



We're always happy to hear from you and you will find us responsive to your needs. Customer Assistance Centre – Telephone 1800 333 306 (TOLL FREE), in Melbourne telephone 9359 7023.

Ford Credit Financial Services.



Ford Leasing and Red Carpet Options are available to approved applicants of Ford Credit Australia Limited. Enquire at your Authorised Ford Dealer.

Fleet Communication Centre.



Our Fleet Communication Centre is available to assist fleet customers with information on Ford products and services. Telephone 1800 673 207.

Further information on these warranties and services may be obtained from your Authorised Ford Dealer.



Have you driven a Ford ... Lately?

This brochure is designed to provide you with a general introduction to the Ford Products (including available optional equipment) referred to, and should be read in conjunction with the latest specification sheet. Because of changes in conditions and circumstances Ford* reserves the right, subject to all applicable laws, at any time, at its discretion, and without notice, to discontinue or change the features, designs, materials, colours and other specifications and the prices of their products, and to either permanently or temporarily withdraw any such products from the market without incurring any liability to any prospective purchaser or purchaser. The latest specification sheet should be referred to for information on the availability, ordering and use of optional equipment. Always consult an Authorised Ford Dealer for the latest information with respect to features, specifications, prices, optional equipment and availability before deciding to place an order. *FORD MOTOR COMPANY OF AUSTRALIA LIMITED. (A.C.N. 004 116 223) Registered Office: 1735 Sydney Road, Campbellfield, Victoria 3061, Australia. Printed September 1996. FCL 6267