

# Ford**FocusC-MAX**

**FILE COPY - DO NOT  
REMOVE**



## Contents

5 Introducing a new member  
of the Ford Focus family

### 6 Bodystyle and series

7 Exterior and interior  
dimensions

8 LX

10 Zetec

12 Ghia

15 Versatility

### 16 Driving and technology

17 Engine data

17 Fuel, performance and  
emissions

18 Model availability, weights  
and loads

18 Mechanical features

### 19 Safety and security

### 20 Finance and services

### 22 Features and colours

23 Wheels

25 Exterior features

27 Audio and communication  
systems

28 Feature packs

28 Interior features

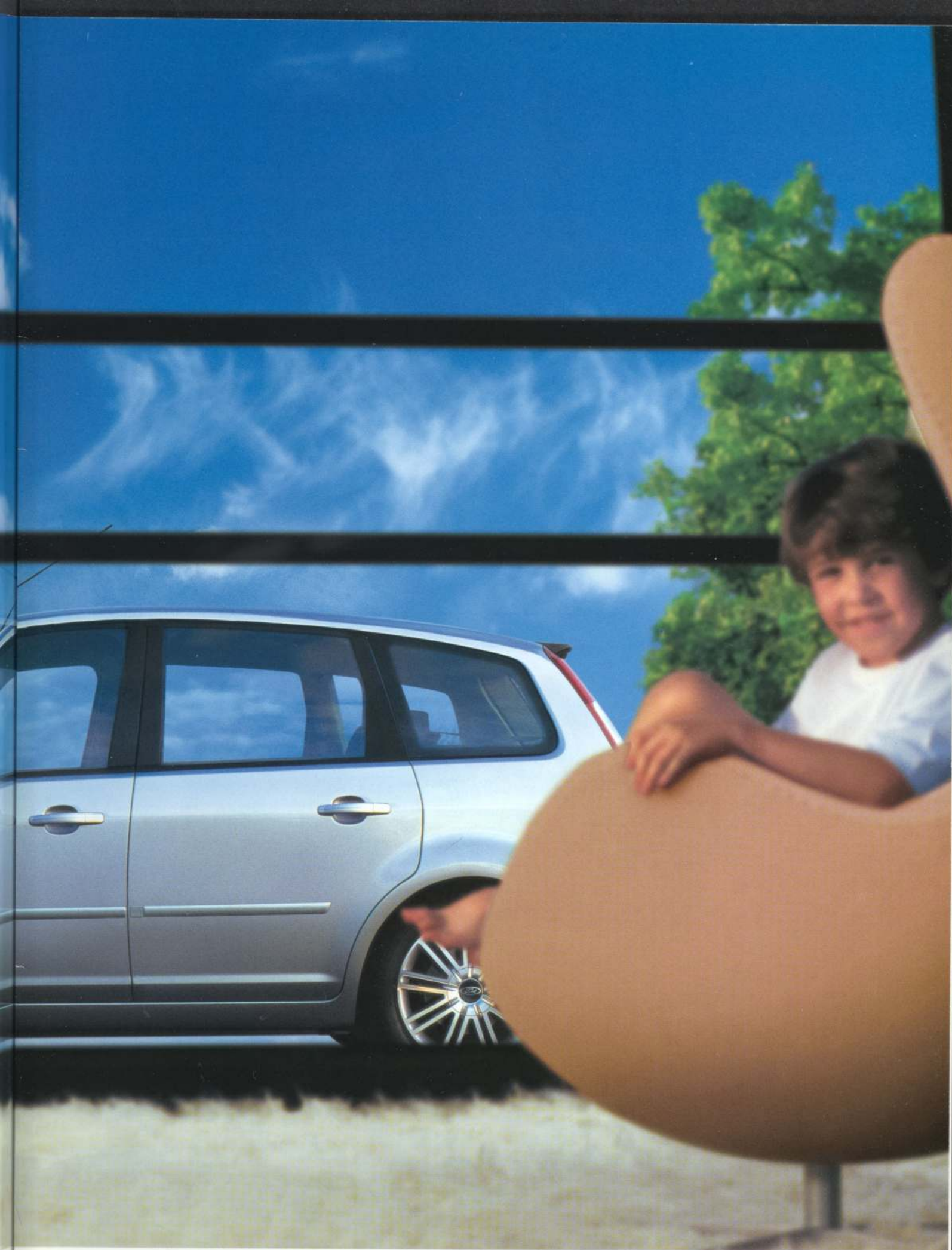
30 Colour and trim



**Model** Ghia **Colour** Machine Silver

**Options** Machine Silver metallic paint, 17" 9x2-spoke alloy wheels  
and xenon headlights with headlight jetwash



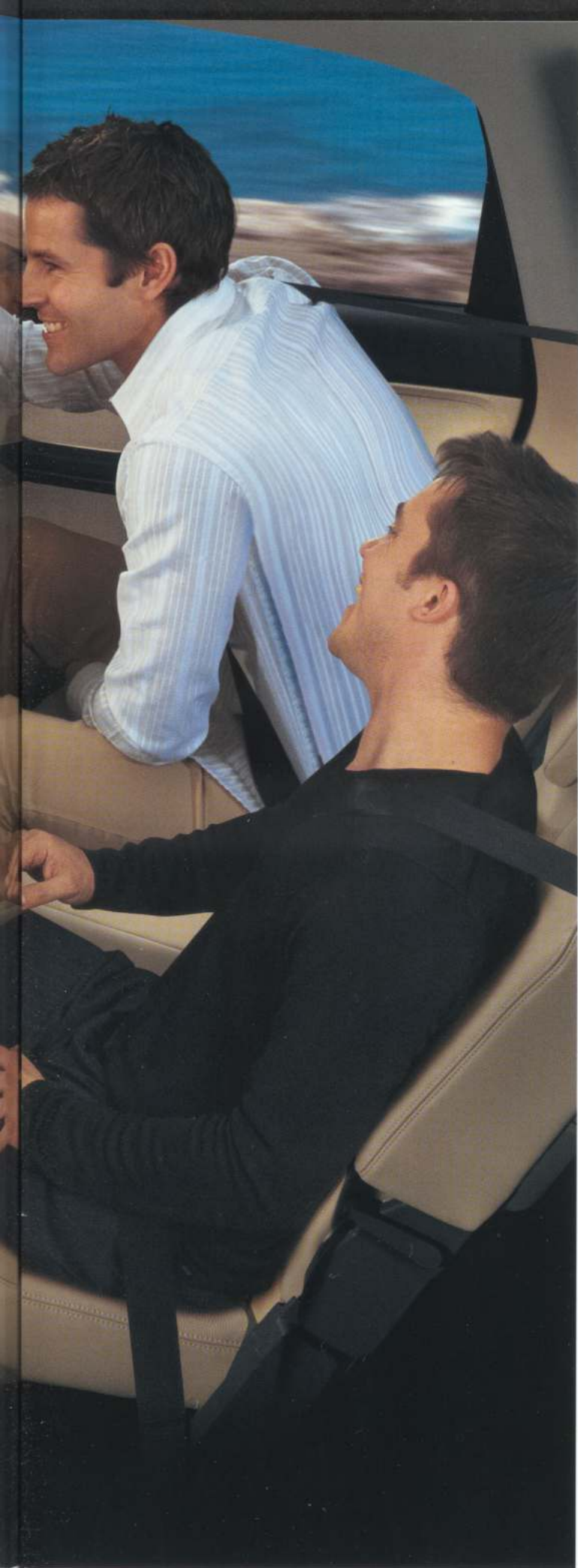


There's style in my life... and life in my style









### Introducing a new member of the Ford Focus family

The world's best-selling car, the award-winning Ford Focus, delivers outstanding quality, dependability and reliability. Now, the Focus family has been extended, with the introduction of the Ford Focus C-MAX. With maximum comfort, maximum confidence and maximum control, the new Focus C-MAX sets new standards. Class-leading handling, premium quality craftsmanship, superlative performance and dynamic styling fuse with unique interior space and versatility.

Focus C-MAX is a car that reflects the pace and diversity of contemporary living. Its design is as stylish as it is flexible, as contemporary as it is spacious. The Focus C-MAX is designed to handle the rich, modern tapestry of work, leisure and the many points in between. This new addition to the Focus range is smart, confident, stylish and, above all, versatile.



### **Ford Focus C-MAX**

Bringing more choice to the Focus range.

### **Choose your Ford Focus C-MAX in the following sections**

- p6 Bodystyle and series
- p16 Driving and technology
- p19 Safety and security
- p20 Finance and services
- p22 Features and colours







## Series availability

Ford**FocusC-MAX** brings outstanding new levels of versatility to the Ford**Focus** range. Available in LX, Zetec and Ghia derivatives, it also gives you more choice. The details differ, but the broad thinking is the same. The Ford**FocusC-MAX** is designed to provide cutting-edge versatility for today's modern living. Whichever model you choose, you'll find the space, flexibility and touches of luxury to perfectly suit your individual needs



### Exterior dimensions

Exterior (mm)	
Overall length	4333
Overall width without mirrors	1825
Overall width with mirrors	2022
Overall height	1595
Front overhang	871
Rear overhang	822
Wheelbase	2640

### Interior dimensions

Front (mm)	
Effective headroom	1017
Maximum effective leg room	1023
Shoulder room	1420
Rear (mm)	
Effective headroom	967
Minimum effective leg room	946
Shoulder room	1400
Luggage area (mm)	
Maximum cargo height	925
Maximum width between wheel arches	1050
Loadspace length to back of rear seats	855
Loadspace length to back of front seats	1734
Stowable luggage (cu m)*	
5-seat mode (laden to roof)	0,550
2-seat mode (laden to roof)	1,620

\*Measured using the VDA method. Dimensions may vary dependent on the model and equipment fitted.

Choose your Ford**FocusC-MAX** from the series

p8 LX p10 Zetec p12 Ghia



Model shown is petrol derivative in Vitro metallic paint.





## LX

- Intermittent rear wash wiper
- Black bodyside mouldings
- Electrically-operated door mirrors
- Front seat back storage pockets
- Front seat valance storage
- Three adjustable rear head restraints
- Driver's seat with manual height adjustment
- Three 40/20/40 split-fold rear seats with individual tip, tumble and remove facility
- Electrically-operated front windows with one-shot lowering on the driver's side
- Intelligent Protection System with
  - driver and front passenger's airbags\*,
  - driver and front passenger's side airbags
  - side curtain airbags for both front and rear passengers
- Anti-lock Braking System with Emergency Brake Assist and Electronic Brake Force Distribution
- Immobiliser - Passive Anti-Theft System (PATS)
- 6000 Single Slot CD, with remote column mounted controls and 6 speakers
- Remote central double locking
- Manual air conditioning
- Load compartment tonneau cover
- 16" wheels standard with diesel derivatives



\*Note: A child seat should never be placed in the front passenger seat when the Ford vehicle is equipped with an operational front passenger's airbag. The safest place for children is properly restrained on the rear seat.





Model shown in Machine Silver metallic paint.





## Zetec

### Additional to LX

- Electrically-operated and heated door mirrors with body colour housings
- Body colour door handles
- Driver's armrest
- Leather-trimmed steering wheel
- Comfort Seat System incorporating
  - three 40/20/40 split-fold rear seats
  - individual tip, tumble and remove facility
  - diagonally sliding outer rear seats
- Dual-tone horn
- Rear reading lights
- Front map lights
- Illuminated vanity mirrors
- Driver's side sunglasses holder
- Driver's seat manual lumbar adjustment
- Aircraft style folding seat back trays
- Trip computer
- Front fog lamps
- 16" 5 x 2 spoke alloy wheels
- Perimeter alarm







Model shown in Deep Rosso metallic paint.



## Ghia

### Additional to Zetec

- 16" 7x2-spoke alloy wheels
- Body colour bodyside mouldings
- Premium Console with Electric Parking Brake
- Electrically-operated front and rear windows with one-shot lowering/closing, and global closing
- Driver's seat power height adjustment
- Passenger's seat manual height adjustment and adjustable lumbar support
- Footwell illumination
- Door mirrors incorporating turn indicators and puddle lights
- Overhead console with child observation mirror
- Auto-dimming rear-view mirror
- Leather gearshift knob
- Rain sensing wipers
- Automatic headlights incorporating fog lights
- Interior Scanning and Perimeter alarm (Thatcham Cat 1)
- Cruise control
- Rear sun blinds











**Sunglasses holder** Handy driver's side holder for your sunglasses. (Standard on Zetec and Ghia.)



**Fascia top storage** Compartment on the front passenger side for storing maps and papers.



**Glovebox** The glovebox provides 10.5 litres of storage space.



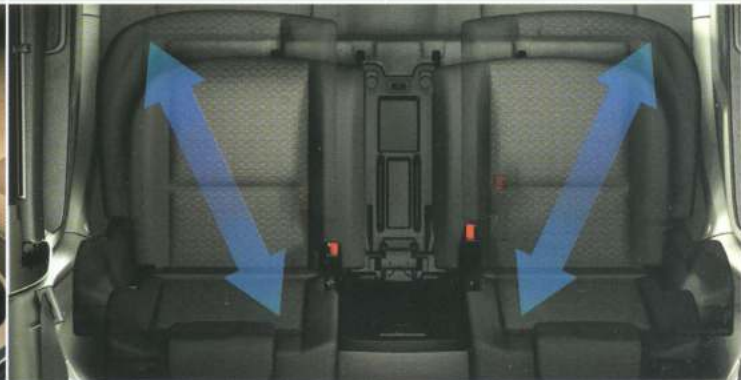
**Front seat back trays** Aircraft-style folding trays on the rear of both front seats. (Standard on Zetec and Ghia.)



**Rear under-floor storage** Useful under-floor compartments in the rear seat footwells.



**Centre console storage** For the convenient carrying of drinks. Can hold one 1.5L bottle plus nine 33cl cans. (Standard on Ghia, optional on Zetec.)



**Comfort Seat System** The rear centre seat slides away to enable the outer seats to converge diagonally, creating more space for two people. (Standard on Zetec and Ghia.)

## Versatility

Whatever's on your 'to do' list today, with Ford Focus C-MAX, it's 'can do'. Whether you're carrying sports equipment to the great outdoors or bringing back that special piece of furniture, Focus C-MAX is impressively adaptable. Intelligent interior design is the key to this enhanced luxury.

Rear seat versatility also provides an array of load and people carrying possibilities. All models accommodate five people, with three comfortably seated in the rear.

The Comfort Seat System (standard on Zetec and Ghia) incorporates an adjustable rear centre seat. This seat slides neatly away, enabling the outer seats to converge diagonally, increasing the space for two people. The centre rear seat back also folds forward to reveal a handy flat surface for work or play. The many storage areas include a sunglasses holder (standard on Zetec and Ghia) and under-floor compartments in the rear seat footwell.

## Choose your engine and features

p17 Engines and transmissions p18 Mechanical features





# Driving and technology

Get the most out of life! The Ford **FocusC-MAX** won't let you down. The advanced Control Blade independent rear suspension enables you to enjoy class-leading driving dynamics without compromising on safety. Engineered to enhance vehicle stability and ride comfort, its benefits are particularly apparent during cornering, accelerating and braking. Smooth, responsive power comes from a choice of petrol and diesel engines. These are matched to either five-speed, six-speed manual gearboxes or a new CVT Automatic Transmission (Constantly Variable Transmission) – all operated via a highly ergonomic gear stick mounted on the instrument panel. The Ford **FocusC-MAX** delivers premium quality performance with contemporary design and technology

## Engine data

	Engine technical features	Maximum power <sup>a</sup>	Maximum torque <sup>a</sup>
<b>1.6 16V Duratec DOHC</b> 1596 cc	Cylinders – 4 in-line / Electronic fuel injection / Visteon engine management system	74 kW (100 PS) at 6000 min <sup>-1</sup> (rpm)	146 Nm at 4000 min <sup>-1</sup> (rpm)
<b>1.8 16V Duratec DOHC</b> 1798 cc	Cylinders – 4 in-line / Electronic fuel injection / Visteon engine management system	88 kW (120 PS) at 6000 min <sup>-1</sup> (rpm)	165 Nm at 4000 min <sup>-1</sup> (rpm)
<b>1.6 16V Duratorq TDCi</b> 1560 cc	Cylinders – Direct fuel injection / Bosch engine management system / Variable nozzle turbocharger	80 kW (109 PS) at 4000 min <sup>-1</sup> (rpm)	245 Nm at 1750 min <sup>-1</sup> (rpm)
<b>2.0 16V Duratorq TDCi</b> 1998 cc	Cylinders – 4 in-line / Direct fuel injection / Siemens engine management system / Variable low inertia turbocharger	100 kW (136 PS) at 4000 min <sup>-1</sup> (rpm)	320 Nm at 2000 min <sup>-1</sup> (rpm)

<sup>a</sup>Tested in accordance with ISO 1585.

## Fuel, performance and emissions

	Derivative	CO <sub>2</sub> emissions (gm/km) <sup>a</sup>	Fuel consumption in L/100 km (mpg) <sup>a</sup>			Performance <sup>a</sup>		
			Urban	Extra Urban	Combined	Max. speed (mph)	0-62 mph (secs)	31-62 mph* (secs)
1.6 16V Duratec	Studio, LX, Zetec	166	8.9 (31.7)	5.7 (49.6)	6.9 (40.9)	107	12,9	14,6
1.8 16V Duratec	LX, Zetec, Ghia	170	9.7 (29.1)	5.6 (50.4)	7.1 (39.8)	120	10,8	13,1
1.6 16V Duratorq TDCi	LX, Zetec, Ghia	129	6.3 (44.8)	4.1 (68.9)	4.9 (57.6)	115	11,3	12,1
1.6 16V Duratorq TDCi, Durashift CVT	LX, Zetec, Ghia	151	7.0 (40.4)	5.0 (56.5)	5.7 (49.6)	112	11,6	7,9
2.0 16V Duratorq TDCi	Zetec, Ghia	148	7.5 (37.7)	4.5 (62.8)	5.6 (50.4)	124	9,6	8,3

\* In 4th gear <sup>a</sup>All CO<sub>2</sub> emissions figures in g/km and fuel consumption figures in L/100 km (mpg) are from officially approved tests in accordance with EEC Directive 1999/100/EC. The CO<sub>2</sub> emissions and fuel consumption test figures shown in the chart do not express or imply any guarantee of the emissions or fuel consumption of a car of the class in question. <sup>a</sup>Ford test figs. All vehicles are 5-speed manual unless 6-speed manual or auto stated. **CVT** = Constantly Variable automatic Transmission. All the figures are based on tests conducted on vehicles with Core equipment level and with standard wheels and tyres; optional or accessory wheels and tyres may have an effect on the emissions and fuel consumption. **Urban** An engine started from cold in laboratory conditions operated at varying speeds, maximum 31 mph, average 12 mph over a theoretical distance of 2.5 miles. **Extra Urban** Conducted immediately after the urban cycle, it consists of half steady speed driving and half varying speed driving, maximum 75 mph over a distance of 4.3 miles. **Combined** This is an average of the two parts of the test, weighted by the distances covered in each part.





## ESP

The optional Electronic Stability Programme (ESP) with Traction Control delivers optimum control and stability.



— Vehicle with ESP.  
— Without ESP.

- A** Vehicle experiences understeer on approach.  
**B** Vehicle experiences oversteer on exit to bend.

## Model availability, weights and loads

	Kerbweights (kg) <sup>a</sup>			Gross Vehicle Mass (kg)	Max. towable Mass (kg)
	Studio, LX	Zetec	Ghia		
1.6 16V Duratec	1335	1372		1855	1200
1.8 16V Duratec	1387	1422	1442	1910	1200
1.6 16V Duratorq TDCi (109 PS)	1391	1419	1439	1920	1300
1.6 16V Duratorq TDCi, CVT auto	1423	1449	1470	1930	1200
2.0 16V Duratorq TDCi, 6-speed manual		1506	1523	1990	1500

<sup>a</sup>Represents the lightest kerbweight assuming driver at 75 kg, full fluid levels and 90% fuel levels, subject to manufacturing tolerances and options, etc., fitted. **Note:** All petrol engines are equipped with a catalytic converter. All vehicles are 5-speed manual unless 6-speed manual or auto stated. **CVT** = Constantly Variable automatic Transmission. **Towing limits** The performance and economy of all models will be reduced when used for towing.

## Mechanical features

	Studio	LX	Zetec	Ghia
<b>Brakes</b>				
Disc brakes – Front and rear	●	●	●	●
Anti-lock brakes with Electronic Brake-Force Distribution (EBD)	●	●	●	●
Emergency Brake Assist (EBA)	●	●	●	●
Electronic Stability Programme (ESP) with Traction Control	○	○	○	○
Electric Parking Brake (EPB)			○	●
<b>Fuel tank</b>				
55 litres (useable capacity) (53 litres on diesels)	●	●	●	●
<b>Steering</b>				
Power-assisted, rack-and-pinion	●	●	●	●
Electric Hydraulic Power-Assisted Steering (EHPAS) (not available with 1.6 petrol engines)		●	●	●
<b>Suspension and body</b>				
Front – Independent with MacPherson struts, rebound springs (not with 1.6 petrol engines), anti-roll bar and gas-filled dampers	●	●	●	●
Rear – Independent Short-Long Arm (SLA) Control Blade multi-link system mounted on subframe, rebound springs (not with 1.6 petrol engines), anti-roll bar and gas-filled dampers	●	●	●	●
<b>Turning circle</b>				
Kerb to kerb 10.7 m	●	●	●	●

● = Standard ○ = Option at extra cost.

# Safety and security

The main emotion you experience when you get into the Ford**FocusC-MAX** is confidence. It's a feeling that comes from well-being – knowing that the car you're sitting in has an uncompromising attitude to safety. Linked to a network of sensors located at strategic points throughout the car, the Intelligent Protection System (IPS) keeps constant watch over the driver and passengers. It incorporates full-size dual-stage driver's and front passenger's airbags\*, side airbags and side curtain airbags. IPS assesses the severity of the incident and activates the appropriate safety system in a split second. Ford**FocusC-MAX** has an engine immobiliser as standard, so you can be confident it is also protected from theft



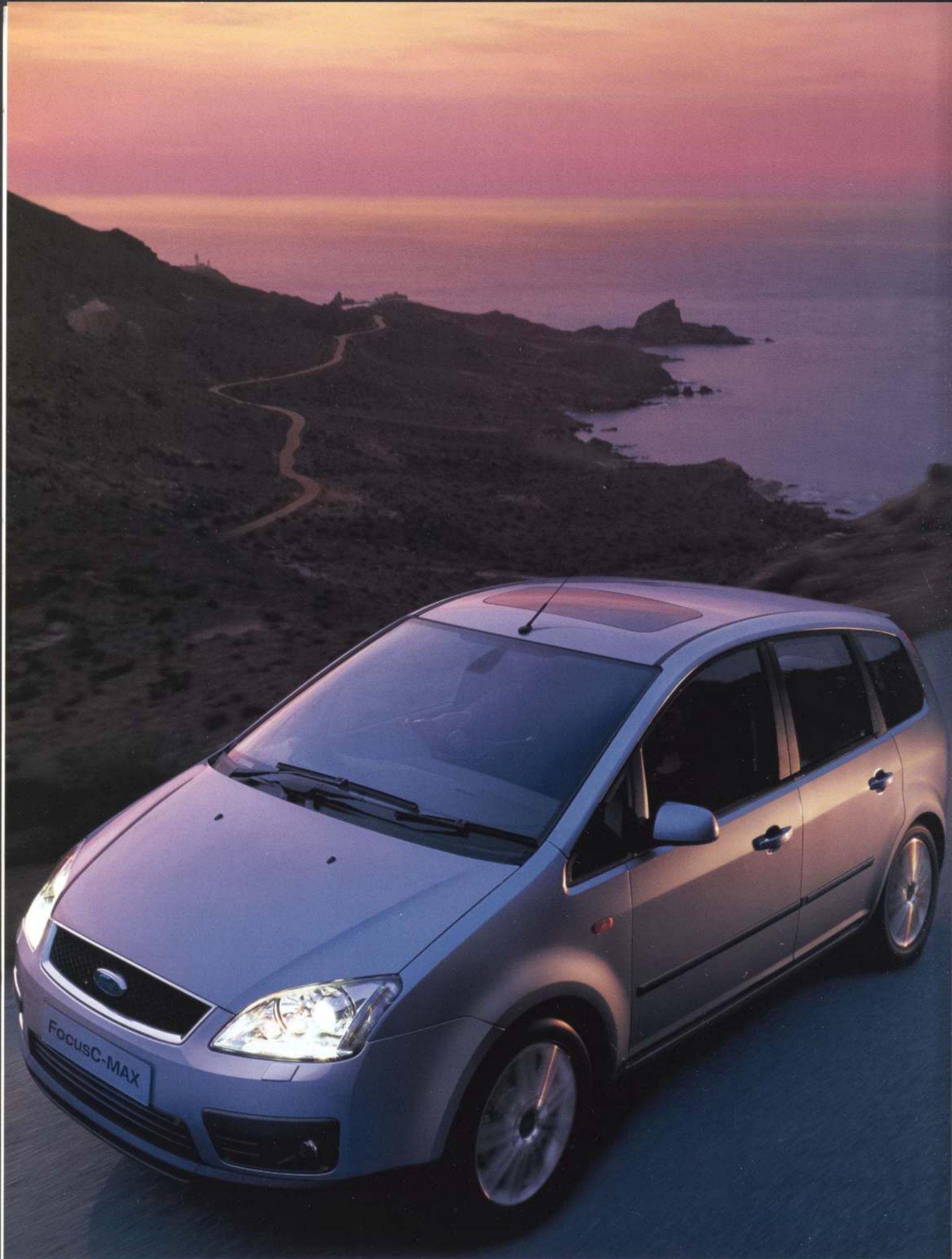
## Safety and security features

	Studio	LX	Zetec	Ghia
Airbags – Driver's and front passenger's*	●	●	●	●
Airbags – Driver's and front passenger's front side impact airbags	●	●	●	●
Airbags – Side curtain airbags deployed from the headlining	●	●	●	●
Steel safety cage with engine compartment cross beam and side impact door beams	●	●	●	●
Alarm – Perimeter		○	●	
Alarm – Perimeter with volume sensing			○	●
Fuel flap – Central locking linked	●	●	●	●
Immobiliser – Passive Anti Theft System (PATS)	●	●	●	●
Locking bonnet – Key operated	●	●	●	●
Locks – Remote control central double locking	●	●	●	●
Vehicle Identification Number (VIN) – Visible	●	●	●	●

● = Standard ○ = Option at extra cost.

\*Note: A child seat should never be placed in the front passenger seat when the Ford vehicle is equipped with an operational front passenger's airbag. The safest place for children is properly restrained on the rear seat.







# Finance and services

Across the UK, a dedicated network of Ford Dealers is equipped and trained to meet the needs of today's drivers. Because of our coveted reputation for quality and reliability, from the moment your new vehicle leaves the showroom, you are assured of lasting, attentive service in many ways. Ford not only cares through Dealers, we also offer a variety of finance and leasing schemes to suit the needs of both the private and business customer. With our wide choice of plans and services no one is more committed to delivering complete motoring confidence and total peace of mind than Ford

## FordCredit

As part of Ford Motor Company, Ford Credit offers convenient and competitive financial services to Ford customers. Choose, try, finance and insure your Ford – without having to leave the showroom.

**Ford Options** Ford Options is the flexible way to finance your Ford. If you are looking to renew your vehicle more often, this is the ideal plan. At the end of the agreement, choose which option suits you best – own the vehicle, return it or choose a new one.

**Ford Acquire** Ford Acquire is a simple method of vehicle finance for private customers. Convenient to arrange, and with flexible terms to suit your needs, owning your Ford has never been so easy.

**Ford Business Partner** As a specialist division of Ford Credit dedicated to partnering businesses, Ford Business Partner will work with you to achieve a complete transport solution.

**Ford Insure** Ford Insure offers a wide range of great value products for you and your Ford including Comprehensive Motor Insurance, Payment Protection Plan\* and Guaranteed Asset Protection\*. When you purchase a Ford from a Ford dealer, you will receive 7 days Driveaway cover\*\* free when you call Ford Insure for a no-obligation annual quotation.

**What's the next step?** Your local Ford Dealer will be pleased to help if you have any further queries and advise you of current special promotions. Your Dealer can also supply a personalised quotation for the finance plan and vehicle of your choice.

To find your local Ford Dealer, please call 0845 7111 888.

You can also obtain a personalised quotation for the finance plan of your choice.

## Services

**Company Car Drivers** Talkback – the company car drivers' club offers members extended test drives, tax and buying advice as well as special offers and invitations to special driver events. To join, log on to [www.talkbackclub.com](http://www.talkbackclub.com) or call 0845 605 55 66 – it's free and you don't even have to drive a Ford.

**Ford Mobility** MAGIC (Mobility and General Information Centre) is a Ford-dedicated care centre created to provide free and comprehensive information on all motoring and mobility issues to anyone requiring such assistance. MAGIC has many special offers for HRDLA recipients, or Motability scheme users, call free on 0800 240 241.

**Ford Protect** Every new Ford car sold is protected by 12 months' unlimited mileage manufacturer's warranty, plus the option of extending this warranty with a no-fee optional 3-year/60,000 miles Ford Protect Plan. Upgrades are also available, giving you the option of worry-free motoring for up to 5 years.

**Ford Service** You can now book your service online. This gives you 24-hour access for online booking, quotes for maintenance and selected repairs, with full details and prices. What's more, we will conduct a free visual healthcheck and provide you with a no-obligation report, so servicing your car couldn't be easier. Just log on to [www.fordserviceonline.com](http://www.fordserviceonline.com)

**Ford Rapid Fit** The national fast-fit network backed by Ford, offering you the convenience of a 'no-appointment-necessary, while-you-wait' service covering tyres, exhausts, brakes, batteries and much more. There are over 300 sites nationwide.

**Ford Accident Repair Centres** If your Ford is involved in an accident, your Ford Dealer is best placed to return it to its pre-accident condition. Dealerships displaying the Ford Accident Repair Centre sign all meet the rigorous customer service and repair quality standards laid down by Ford, and offer a three-year repair guarantee.

**Ford Customer Relationship Centre** In the unlikely event that your Ford Dealer can't help you or you need to speak to Ford directly, the Ford Customer Relationship Centre is just a phone call away. Call local rate 0845 841 1111.

**Ford Rental – local service nationwide** Providing quality car and van rental from Ford's latest model range. For further information contact your local Ford Dealer.

Alternatively, why not visit us online at [www.ford.co.uk](http://www.ford.co.uk)

Finance subject to status and conditions, to over 18s only. Guarantees/Indemnities may be required. Written quotations available on request. Freepost Ford Credit. Correct at the time of going to print. Contact your Dealer for terms and conditions. Ford Insure is underwritten by Norwich Union Insurance Limited, registered in England no. 99122. Member of the General Insurance Standards Council. Registered office at 8 Surrey Street, Norwich NR1 3NG. For our joint protection, calls may be recorded or monitored. \*Please refer to Payment Protection policy booklet for full details of the benefits and exclusions. \*\*Excesses apply. Please refer to Summary of Cover for details. Maximum 5 vehicles. Not available in conjunction with any other promotion.





# Features and colours

Ford**FocusC-MAX** lives up to its name – delivering maximum comfort with an array of premium quality options and features. In addition to head-turning good looks and superior levels of flexible space, Ford**FocusC-MAX** delivers all the comfort and convenience you would expect from a Ford**Focus**... and more. The 'Comfort Seat System' and the many storage options are just the start. Across the entire range, equipment levels are extremely generous to complement even the most demanding modern lifestyle



## Wheels

	Studio	LX	Zetec	Ghia
6 x 15" steel with 9-spoke wheelcovers and 195/65 R15 tyres (Standard on petrol derivatives)	●	●		
6½ x 16" steel with 8-spoke wheelcovers and 205/55 R16 tyres (Standard on diesel derivatives)	●	●		
6½ x 16" steel with 7-spoke wheelcovers and 205/55 R16 tyres	○	○		
6½ x 16" 5x2-spoke alloy with 205/55 R16 tyres			●	
6½ x 16" 7x2-spoke alloy with 205/55 R16 tyres				●
6½ x 16" 7x2-spoke alloy with 205/55 R16 tyres (machined)				○
6½ x 17" 9x2-spoke alloy with 205/50 R17 tyres			○	○
6½ x 17" 9x2-spoke alloy with 205/50 R17 tyres (machined)			○	○
Mini steel spare	●	●	●	●

● = Standard ○ = Option at extra cost.

Personalise your Ford**FocusC-MAX** with

p23 Wheels p25 Exterior features p27 Audio and communications p28 Interior features p30 Trim and body colours









**Dynamic xenon headlights** For powerful illumination of the road ahead. (Optional on Zetec and Ghia.)



**Power sunroof** Tilt and slide adjustable for easily controllable ventilation. (Optional.)



**Park Assist** An audible warning helps you to safely judge parking distances. (Optional.)

**Tow bar** The optional detachable tow bar can tow up to 1,250 kg.

## Exterior features

	Studio	LX	Zetec	Ghia
<b>Styling</b>				
Bodyside mouldings – Black	●	●	●	
Bodyside mouldings – Body colour				●
Bumpers – Body colour with black protection strip mouldings	●	●	●	●
Bumpers – Rear bumper scratch pad moulding			●	●
Door and tailgate handles – Body colour			●	●
Paint – Metallic	○	○	○	○
Radiator grille – Chrome surround			●	●
Spoiler – Roof mounted	●	●	●	●
<b>Functional</b>				
Door mirrors – Electrically-operated	●	●		
Door mirrors – Electrically-operated and heated, body colour housings			●	
Door mirrors – Integrated side turn indicators and puddle lights				●
Heated rear window	●	●	●	●
Heated windscreen – 'Quickclear' – with heated washer jets	○	○	○	●
Park Assist* – Front and rear sensors		○	○	○
Park Assist* – Rear sensors	○	○	○	○
Glass – Privacy, dark tinted		○	○	○
Towbar – Fixed or detachable (including electrical kit)	○	○	○	○
Wipers – Front, variable intermittent with electric wash	●	●	●	●
Wipers – Tailgate, intermittent with electric wash and auto reverse wipe	●	●	●	●
Wipers – Autowipers, with rain sensor			○	●
<b>Lights</b>				
Automatic headlights				●
Headlights, side lights, rear fog lights, reversing lights, high-mounted rear brake light	●	●	●	●
Xenon headlights with automatic headlight levelling and washer jets			○	○

● = Standard ○ = Option at extra cost.







**Mobile phone hands-free kit** Keep in touch on the move. The holder is instrument panel-mounted; sound is amplified by radio and comes through vehicle speakers. (Available as an accessory.)\*



**DVD navigation system with touch-screen** Provides detailed audio-visual directions to your destination and incorporates a 7" full colour touch-screen.



**Multimedia DVD system** Enables rear seat passengers to watch DVDs on a full colour screen.

### In-car entertainment and information

Ford Focus C-MAX is available with a range of premium audio, information and entertainment options – including a superb rear seat entertainment system incorporating Multimedia DVD technology.

Audio systems include a 6000 single CD player, a Sony single CD player with MP3 capability, and a Sony 6CD with in-dash CD autochanger. All units incorporate the Radio Data System (RDS), which can automatically cut in with essential traffic news.

A colour touch-screen navigation system is available to help you find your way to even the most obscure destinations. There's also a choice of rear seat entertainment options, which make every journey a pleasure.

### Audio and communication systems

	Studio	LX	Zetec	Ghia
<b>Audio</b>				
Remote audio controls (column mounted)		●	●	●
Stereo radio/cassette – Model 5000, RDS EON, 'Keycode' anti-theft coding and 2 front speakers	●			
Stereo radio/CD – Model 6000, RDS EON, 'Keycode' anti-theft coding and 6 speakers (4 front, 2 rear)		●	●	●
Sony Stereo radio/CD, RDS EON, MP3 capability, 'Keycode' anti-theft coding, DSP, 8 premium speakers (4 front, 4 rear)		○	○	○
Sony Stereo radio/6 disc in-dash CD autochanger, RDS EON, 'Keycode' anti-theft coding, DSP, 8 premium speakers (4 front, 4 rear)			○	○
DVD navigation system – 7" touchscreen, colour display, Stereo radio/Single CD RDS EON, MP3 capability, 8 premium speakers (4 front, 4 rear) (requires DEATC air conditioning and heated front seats)			○	○
DVD navigation system – 7" touchscreen, colour display, Stereo radio/CD RDS EON, MP3 capability plus 6xCD underseat autochanger, 8 premium speakers (4 front, 4 rear) (requires DEATC air conditioning and heated front seats)			○	○
Multimedia DVD system – Roof mounted DVD player with flip-down 7" full colour screen with infra red remote control and two infra red headphones			○	○
Mobile phone hands-free kit*	○	○	○	○

● = Standard ○ = Option at extra cost.

\*From December 1st, 2003 it is an offence for drivers to use a hand-held mobile phone or similar device whilst driving.





**Integrated sun blinds** Can be drawn up to block out dazzling sunlight into the rear compartment. (Standard on Ghia.)



**Dual Electronic Automatic Temperature Control (DEATC)** provides easy-to-use separate driver and passenger temperature controls to keep all occupants comfortable. (Optional on Zetec and Ghia.)



**Electric Parking Brake (EPB)** The easy to operate Electric Parking Brake is engaged and disengaged at the flick of a centre console-mounted switch. (Standard on Ghia, optional on Zetec.)



**Internal bike rack** Enables you to transport two bikes inside Focus C-MAX. (Available as an accessory.)

## Options

Ford Focus C-MAX is designed to fit perfectly into your lifestyle. You can choose from a range of options to make sure that you get the right mix of enhanced enjoyment, exclusive style and additional practicality. There's a wide range of tough, stylish alloy wheels and a choice of practical, functional tow bars. An internal bike rack enables you to transport two bikes inside

Focus C-MAX; the mobile phone hands free kit enables you to stay in contact while keeping your eyes on the road. The Traveller Pack includes a reversible luggage compartment mat, a floor net and a load barrier retention net which keeps items safe and secure in the load area while you're on the move.

## Feature Packs

	Studio	LX	Zetec	Ghia
Traveller Pack – Load barrier retention net, floor net and reversible luggage compartment carpet floor mat	○	○	○	○
Smokers Pack – Ashtray, cigar lighter, powerpoint	●	●	●	●

● = Standard ○ = Option at extra cost.

## Interior features

	Studio	LX	Zetec	Ghia
<b>Comfort and convenience</b>				
Air recirculation	●	●	●	●
Air conditioning – CFC-free		●	●	●
Air conditioning – CFC-free with Dual Electronic Automatic Temperature Control (DEATC)			○	○
Centre console – Base, with two open storage bins, two cup holders, power point and mechanical parking brake	●	●	●	
Centre console – Premium, with centre armrest and storage bin underneath, front and rear power points and Electric Parking Brake				●
Glovebox – Single, illuminated	●	●	●	●
Grab handles – Four, with rear coat hooks (three and driver's side sunglasses holder on Zetec and Ghia)	●	●	●	●
Mirror – Located in front overhead console for rear occupance observation (not available with sunroof)				●
Storage – Front doors, front and rear of centre console	●	●	●	●
Storage boxes – Two, underneath rear passenger's foot area	●	●	●	●
Storage unit – Located in upper instrument panel with lid	●	●	●	●
Sun blinds – Integrated pull up on rear doors	○	○	○	●

## Interior features

	Studio	LX	Zetec	Ghia
Sunglasses holder			●	●
Sunroof – Electrically-operated, tilt/slide (not available with overhead console)	○	○	○	○
Sunvisors – Front with mirrors (illuminated on Zetec and Ghia)	●	●	●	●
Windows – Front, electrically-operated with one-shot lowering on driver's side	●	●	●	
Windows – Front and rear, electrically-operated with one-shot lowering/closing, anti-trap feature and global opening/closing				●
<b>Seats and seat belts</b>				
Front seat – Driver's manual height adjustment	●	●	●	
Front seat – Driver's adjustable lumbar support			●	●
Front seat – Passenger's manual height adjustment and adjustable lumbar support				●
Front seat – Driver's armrest, driver seat mounted (integrated in premium console on Ghia)			●	●
Front seats – Fully reclining with fully adjustable head restraints	●	●	●	●
Front seats – Heated cushion and seatback		○	○	○
Rear seats – Three individual seats, 'Tip and tumble' with 40/20/40 split-fold (all seats are foldable and removable)	●	●		
Rear seats – Three individual seats, Comfort seat system, with 40/20/40 split-fold (outer seats slide diagonally, backward and inward)			●	●
Rear seats – Three head restraints	●	●	●	●
Seats – Anti-submarining	●	●	●	●
Seat back trays – Folding			●	●
Storage pockets – Front seat backs	●	●	●	●
Seat belts – Lap and diagonal inertia reel on all seats	●	●	●	●
Seat belts – Front height-adjustable mounts	●	●	●	●
<b>Carpet and trim</b>				
Carpet – Non-woven	●	●		
Carpet – Luxury			●	●
Carpet – Slip mats for front				●
Carpet – Premium velour slip mats, front and rear		○	○	○
Door handles and handbrake release button – Aluminium finish			●	●
Satin aluminium finish instrument cluster rings			●	●
Scuff plates – Black finish, front and rear	●	●	●	●
Steering wheel – Four 'silver-finish' spokes, leather trimmed			●	●
<b>Instruments and controls</b>				
Instruments – Speedometer, tachometer, electric odometer and trip recorder, fuel gauge and water temperature gauge	●	●	●	●
Trip/fuel computer, incorporating low washer fluid and exterior air temperature			●	●
Warning indicators for: Airbag/seat belt pretensioner, gear selector lever lock, charge control, engine temperature, brake pad wear, low fuel, oil pressure, doors open, ABS system, handbrake on/low brake fluid, ignition/alternator system, 'lights on' audible warning	●	●	●	●
Illuminated recirculation heater controls – 5-speed fan. Five vents with pollen and active carbon filters and direction control, two dedicated side window demists and rear compartment ducts	●	●	●	●
Cruise control			○	●
Control indicators for: Rear fog light, glow plugs on (diesel only), direction indicator, main beam, selector lever indicator (on auto), ABS system/ESP operation	●	●	●	●
Steering column – Reach and rake adjustable	●	●	●	●
<b>Interior lighting</b>				
Courtesy light – Front overhead with theatre-style dimming and delayed switch-off	●	●	●	●
Courtesy lights – Front overhead with two map lights and, on Ghia, front footwell light			●	●
Courtesy lights – Rear overhead dome courtesy light (includes reading lights on Zetec and Ghia)	●	●	●	●
Load compartment light	●	●	●	●
<b>Luggage compartment</b>				
Tonneau cover		●	●	●

● = Standard ○ = Option at extra cost.



## Trim colours

			
			
Element in Dark Flint seat facing Twill in Dark Flint seat sides	Element in Blue seat facing Twill in Dark Flint seat sides	Cubic in Medium Light Flint seat facing Mondus in Medium Light Flint seat sides	Cubic in Dark Flint seat facing Mondus in Dark Flint seat sides
			
			
Linea in Camel seat facing Kent Light in Light Parchment seat sides	Linea in Ebony seat facing Kent Light in Ebony seat sides	Louis leather** in Camel seat facing Verona leather in Camel seat sides	Louis leather** in Ebony seat facing Verona leather in Ebony seat sides

## Trims and body colour

Model	Studio/LX		Zetec			Ghia			
Seat trim	Element	Element	Cubic	Cubic	Leather*	Linea	Linea	Leather*	Leather*
<b>Solid body colours</b>									
Deep Navy	F	B	F	L	E	E	C	E	C
Diamond White	F	B	F	L	E	E		E	
Colorado Red	F		F	L	E	E		E	
<b>Metallic body colours*</b>									
Moondust Silver	F	B	F	L	E	E	C	E	C
Ink Blue	F	B	F	L	E	E	C	E	C
Machine Silver	F	B	F	L	E	E	C	E	C
Magnum Grey	F	B	F	L	E	E	C	E	C
Panther Black	F	B	F	L	E	E	C	E	C
Vitro	F	B	F	L	E	E		E	
Deep Rosso	F		F	L	E	E	C	E	C
Honour Green	F	B	F	L	E	E	C	E	C
Tonic	F	B	F	L	E	E	C	E	C

Seat trim colour key: F – Dark Flint, B – Blue, L – Medium Light Flint, E – Ebony, C – Camel.

\*Metallic paint and leather trim are options at extra cost.

\*\* Optional

## Body colours



Deep Navy  
Solid body colour



Diamond White  
Solid body colour



Colorado Red  
Solid body colour



Moondust Silver\*  
Metallic body colour



Ink Blue\*  
Metallic body colour



Machine Silver\*  
Metallic body colour



Magnum Grey\*  
Metallic body colour



Panther Black\*  
Metallic body colour



Vitro\*  
Metallic body colour



Deep Rosso\*  
Metallic body colour



Honour Green\*  
Metallic body colour



Tonic\*  
Metallic body colour





BY APPOINTMENT TO  
HER MAJESTY THE QUEEN  
MOTOR VEHICLE MANUFACTURERS  
FORD MOTOR COMPANY LIMITED  
BRENTWOOD, ESSEX



BY APPOINTMENT TO  
H.M. QUEEN ELIZABETH THE QUEEN MOTHER  
MOTOR VEHICLE MANUFACTURERS  
FORD MOTOR COMPANY LIMITED  
BRENTWOOD, ESSEX



BY APPOINTMENT TO  
HRH THE PRINCE OF WALES  
MOTOR VEHICLE MANUFACTURERS  
FORD MOTOR COMPANY LIMITED  
BRENTWOOD, ESSEX

"The Focus C-MAX proves that an MPV doesn't have to trade **driving pleasure** for **practicality**" *What Car? New Reg Special, 2003*

"C-MAX takes the dynamic honours and **pushes Ford interior quality to new heights.**" *Autocar, 25<sup>th</sup> June 2003*

"The C-MAX goes for **looks and driving ability...**"

*What MPV and 4x4?, August 2003*

Dealer

Published by Ford Motor Company Limited,  
Brentwood, Essex, England.  
Registered in England No. 235446.  
FA 1465.  
BJN 18028.  
PN 379514/0308/160m/GB  
08.2003.  
© Ford Motor Company Limited.  
**www.ford.co.uk**

**The Government fuel figures** do not express or imply any guarantee of the fuel consumption of any particular car. The cars themselves have not been tested and there are inevitably differences between individual cars of the same model. In addition, a car may incorporate particular modifications. Furthermore, the driver's style and road and traffic conditions, as well as the extent to which the car has been driven and the standard of maintenance, will affect its fuel consumption. **Insurance groups** are only as recommended by the Association of British Insurers. You should always consult your insurance adviser for confirmation. **Illustrations, descriptions and specifications.** This catalogue was correct at the time of going to print. However, Ford policy is one of continuous product development. The right is reserved to change specifications, colours and prices of the models and items illustrated and described in this publication at any time. For the latest details always consult your Ford Dealer. **Optional equipment.** Throughout this publication, wherever a feature is described as being an 'Option' or 'Optional Fitment/Pack', etc., you should assume that it will be at extra cost to the base vehicle, unless specifically stated to the contrary. All models and colour combinations are subject to availability.

Designed for living. Engineered to last

