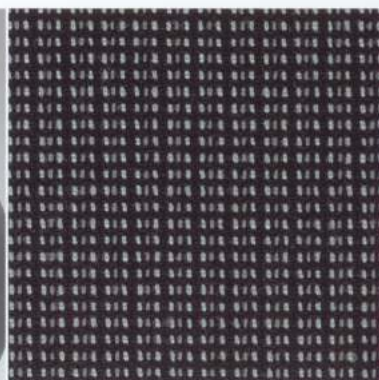


Ford**KaVan**

**FILE COPY - DO NOT
REMOVE**





Kimono in White
Standard on Ceramic White and
Moon dust Silver models



Kimono in Red
Standard on Colorado Red models

Ford Ka Van. Original thinking at work

Introducing the perfect blend of practicality and individuality. Ford Ka Van is designed to stand out from the crowd – while providing the functionality your business requires. The exterior design is beautifully original; inside, you'll find two comfortable front seats and a highly useable load area with a flat load floor and a bulkhead.

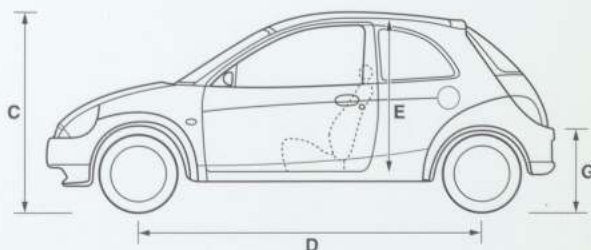
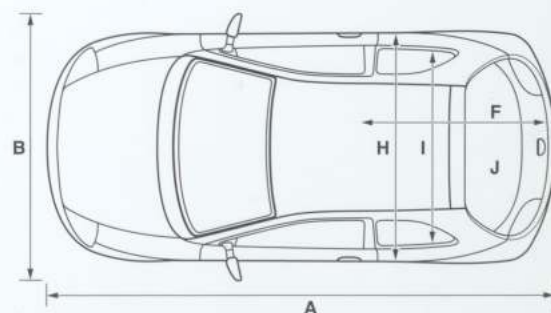
Originality has always been a key factor in business success. With its nippy around-town agility, complete driver comfort, handy loadspace and distinctive style, Ford Ka Van delivers.

Pricing

Total retail	£7,500 plus VAT
Estimated 'On the Road' retail	£8,132 plus VAT

Dimensions

	mm
A Overall length	3620
B Overall width with mirrors	1827
C Unladen height	1368
D Wheelbase	2446
E Load floor to roof	790
F Loadspace length	1360
G Loading height	630
H Maximum interior load width	1120
I Load width between wheel arches	870
J Loadspace – (in litres measured using VDA method)	724
Turning circle (m)	
Kerb to kerb – 9.9	
Fuel tank	
40 litres	



Weights and loads

	Payload (Gross) (kg)	Gross vehicle mass (kg)	Kerb mass (kg)
Ka Van			
1.3i	300	1265	965

Kerb mass: Represents the lightest kerbweight assuming full fluid levels and 90% fuel levels, subject to manufacturing tolerances and options, etc., fitted.
Gross payload = Gross vehicle mass, less kerb mass.

Recommended price: The Estimated 'On the Road' retail price consists of the recommended retail price of the vehicle, delivery to Dealer, Government Vehicle Excise Duty, Government Vehicle First Registration Fee and estimated cost of number plates. Recommended retail prices are prices recommended by Ford to the Dealer excluding VAT. VAT: Prices quoted exclude VAT at the current rate. The total price of the vehicle, including factory-fitted options and accessories fitted by the Ford Transit Specialist Dealer, will be subject to VAT on retail sale.

Engine data

	Engine technical features	Maximum power ^o	Maximum torque ^o
1.3 HCS EFI (Catalyst) 1299 cc	Cylinders – 4 in-line / Fuel injection with EEC V engine management system / Electronic breakerless ignition	44 kW (60 PS) at 5000 min ⁻¹ (rpm)	105 Nm at 2500 min ⁻¹ (rpm)

^o = Tested in accordance with ISO 1585.

Features

Brakes

Diagonally-split, with dual-line servo-assistance. Front discs, rear drums

Steering

Power-assisted rack-and-pinion (variable ratio)

Suspension and body

Front – Independent with MacPherson struts, and subframe-mounted 'A' arm. Anti-roll bar

Rear – Twist-beam semi-trailing coil springs

Safety

Airbag – Driver's

Front seats – Anti-submarining

Seat belts – Front, inertia reel, with grabbers

Side impact door beams. Steel safety cage with engine compartment cross beam. Energy-absorbing crumple zones, front and rear

Fuel cut-off inertia switch

Security

Immobiliser – Passive Anti-Theft System (PATS)

Steering column lock

Fuel cap – Locking

Vehicle Identification Number (VIN) – Visible

Exterior appearance and styling

Bumpers – Mid Grey

Wheels – 5x13 steel with full wheelcovers and 165/65 R13 Low Rolling Resistance (LRR) tyres

Exterior functional

Door mirrors – Manual internal control, black housings

Heated rear window

Wipers – Front, 2-speed, plus intermittent

Wipers – Tailgate wiper with electric wash

Audio

Stereo FM radio/cassette – Model 1000, removable control panel, 2 speakers

Carpet and trim

Carpet – Non-woven velour

Door trim – Fabric insert, moulded panel with pull handle/armrest, door bins with cup/can holders and integrated speakers

Instruments and controls

Instruments – Speedometer, odometer, fuel gauge, trip recorder

Warning indicators for oil pressure, engine temperature, direction indicators, high beam, ignition/alternator, low brake fluid/handbrake on, airbag(s), 'lights on' audible warning

Illuminated heater controls – 4-speed fan. Four vents with temperature and direction control

Control stalks – Column-mounted for master lights, indicators and wash/wipe functions

Seats and seat belts

Front seats – Fully reclining with height-adjustable head restraints

Comfort and convenience

Clock – Analogue

Storage – Headlining storage net

Cup/can holders – Driver's and front passenger's door

Load compartment

Bulkhead – Half-height, full-width steel lower, mesh upper

Colours

Solid – Ceramic White, Colorado Red

Metallic (at extra cost) – Moondust Silver

All Base model Ka options available at extra cost.



BY APPOINTMENT TO
HER MAJESTY THE QUEEN
MOTOR VEHICLE MANUFACTURER
FORD MOTOR COMPANY LIMITED
BRENTWOOD ESSEX



BY APPOINTMENT TO
HM QUEEN ELIZABETH THE QUEEN MOTHER
MOTOR VEHICLE MANUFACTURER
FORD MOTOR COMPANY LIMITED
BRENTWOOD ESSEX



BY APPOINTMENT TO
HRH THE PRINCE OF WALES
MOTOR VEHICLE MANUFACTURER
FORD MOTOR COMPANY LIMITED
BRENTWOOD ESSEX

Ford Protect

Every new Ford Ka Van is protected by a 3-year/60,000-mile Ford Protect Plan. Upgrades are also available, giving you the option of worry-free motoring for up to 5 years.

RAC cover

All Ford Ka Van models are supplied with a comprehensive one year's RAC package including Roadside Assistance.

Ford Rapid Fit

The national fast-fit network backed by Ford, offering you the convenience of a 'no-appointment-necessary, while-you-wait' service covering tyres, exhausts, brakes, batteries and much more. There are over 300 sites nationwide.

Ford Accident Repair Centres

If your Ford is involved in an accident, your Ford Dealer is best placed to return it to its pre-accident condition. Dealerships displaying the Ford Accident Repair Centre sign all meet the rigorous customer service and repair quality standards laid down by Ford, and offer a three-year workmanship guarantee.

Ford Customer Relationship Centre

In the unlikely event that your Ford Dealer can't help you or you need to speak to Ford directly, the Ford Customer Relationship Centre is just a phone call away. Call local rate 0845 841 1111.

Dealer

For more information

To find the location of your nearest Ford Transit Specialist Dealer, simply call the Ford Information Service on 0845 7111 888, or visit the Ford Dealer locator at www.fordvans.co.uk

Price and specification changes

Model prices are inclusive of all equipment specified by Ford Motor Company Limited as the essential minimum for a specific GVM.

Option prices are for equipment supplied in lieu of, or in addition to the standard minimum equipment. For full details of minimum specifications and option availability, consult a Ford Transit Specialist Dealer (for details of your Ford Transit Specialist Dealer, either visit our website, or contact 0845 7111 888).

The prices and specifications in this publication were true and accurate at the time of printing. You should, however, check details with your Ford Transit Specialist Dealer, as there may have been changes in view of the Ford policy of continuous development. The right is reserved to change specification and prices.

Published by Commercial Vehicle Marketing,
Ford Motor Company Limited,
Brentwood, Essex, England.
Registered in England No. 235446.
FA 1443.
BJN 17636.
October 2002.
© Ford Motor Company Limited.

www.fordvans.co.uk

Illustrations, descriptions and specifications. This catalogue was correct at the time of going to print. However, Ford policy is one of continuous product development. The right is reserved to change specifications, colours and prices of the models and items illustrated and described in this publication at any time. For the latest details always consult your Ford Dealer. **Optional equipment.** Throughout this publication, wherever a feature is described as being an 'Option' or 'Optional Fitment/Pack', etc., you should assume that it will be at extra cost to the base vehicle, unless specifically stated to the contrary.

