

fordka
original thinking

**FILE COPY - DO NOT
REMOVE**



more than just skin deep

Drive a car with a point of view. With style and substance. A vehicle with precise, direct steering and crisp acceleration. Refreshing proof that design and engineering can turn an original thought into a unique and rewarding experience.

Ford Ka. Original Thinking.



The curvaceous shape of the door panels and facia echo the curving lines of the exterior. Simple and pleasingly bold, the design of the oval clock is pure Ford Ka.

The model shown on the front cover is a KA Collection in State Blue featuring optional 8-spoke alloy wheels.

Model shown is Ka Collection in Metropolis Blue.



Heated front windscreen available on selected models.

The airbag and seat belt systems act simultaneously with the vehicle structure to provide protection within 50 milliseconds of impact.

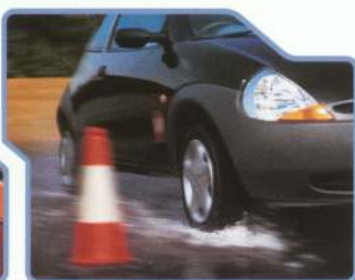
The anti-lock braking system, optional on selected models, enhances control during heavy braking.

Power steering, for reduced driver effort and increased response.





Side impact beams enhance occupant safety in the event of an accident.



With the longest wheelbase in its class, Ford Ka has big-car stability. And, with a turning circle of 9.9 metres kerb to kerb, the Ford Ka has small-car agility, too.

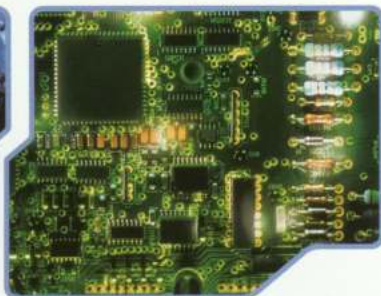
driving dynamics

A real car for a real world. Full of twists and turns – and a surprise around every corner.

You're ready to meet it all with Ford Ka. It has the ability and capability you need to enjoy life in the driving seat. Agile, dynamic and confident.



The 1.3-litre HCS EFI engine packs a satisfyingly powerful punch.



The EEC V engine management system helps deliver smooth engine performance at all times.



Optional front passenger's and side impact airbags* help to give all-round protection for front occupants.

*Note: A rear-facing child seat should never be placed in the front passenger seat when the Ford vehicle is equipped with a front passenger's or side airbags.

ka



Model shown is Ka in optional Moondust Silver

Ka comes in three interior trim colours, designed to match the chic exterior colours.

- Immobiliser • Sports-style white instrument dials • Power-assisted steering • Driver's airbag • Headlining storage net
- Fully-reclining front seats with height-adjustable head restraints • Stereo 1000 radio/cassette



Model shown is Ka in optional Panther Black.

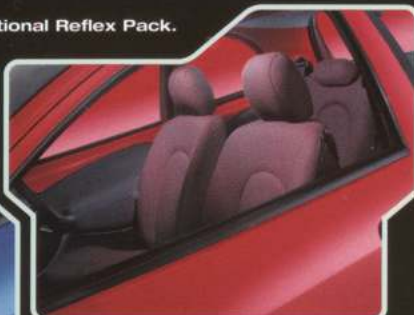
Rear head restraints are available as part of the optional Reflex Pack.



kimono white



kimono blue



kimono red





The storage space in Ka includes bottle holders in the front door bins (left) and a handy covered storage space in the rear armrest (right).

ka style

The essential Ford Ka. A true original from bumper to bumper. There's simply nothing like it on the road. Drive with style, style with drive.

- Power assisted steering • RDS Traffic Stereo 5000 radio/cassette
- Body colour bumpers • Immobiliser • Fully-reclining front seats with height-adjustable head restraints • Driver's airbag
- Sports-style white instrument dials • Headlining storage net

The model shown is Ka Style in optional Jewel Green.



ka collection



Make a striking entrance in a Ford Ka Collection. It has real eye appeal and a host of desirable details. Smart thinking in action. Ka Collection features colour co-ordinated style details and trim.

- Power-assisted steering • Central locking • Body colour bumpers and door mirrors • Scuff plates and front floor mats with Ka logo
- Rear seat head restraints • Electrically-operated front windows
- Leather-trimmed gear knob and steering wheel
- RDS Traffic Stereo 6000 CD Player



Model shown is Ka Collection in State Blue featuring optional 8-spoke alloy wheels





ka collection

Model shown is Ka Collection in Colorado Red with optional Reflex Pack, Convenience Pack and Air Conditioning.



sun collection

Summer is here with the Ford Sun Collection. Bringing the outside inside, whenever you want. Part of the Ka Collection family, it's always an open choice with the electrically-operated, foldback sunroof.

- Power-assisted steering • Central locking • Body colour bumpers and door mirrors • Scuff plates and front floor mats with Ka logo
- Rear seat head restraints • Electrically-operated front windows
- Leather-trimmed gear knob and steering wheel • RDS Traffic Stereo 6000 CD Player • Electrically-operated full length canvas sunroof





luxuryka



Available with Light Cyprus or Midnight Black leather trim.

Soft leather, gleaming chrome, Ford luxuryKa is full of these luxury elements. And a feature list that goes on and on. If large-car luxury and small-car agility are on your wish list, Ford luxuryKa will surely fulfil your desires.

- Remote-control central locking • RDS Traffic Stereo 6000 CD Player • Chrome-effect radiator grille • Power front windows
- Electrically-operated and heated door mirrors • Chrome exhaust trim • Leather trim • CFC-free air conditioning • 14" 6x2-spoke alloy wheels • "Quickclear" heated front windscreen



Boot slip mat.

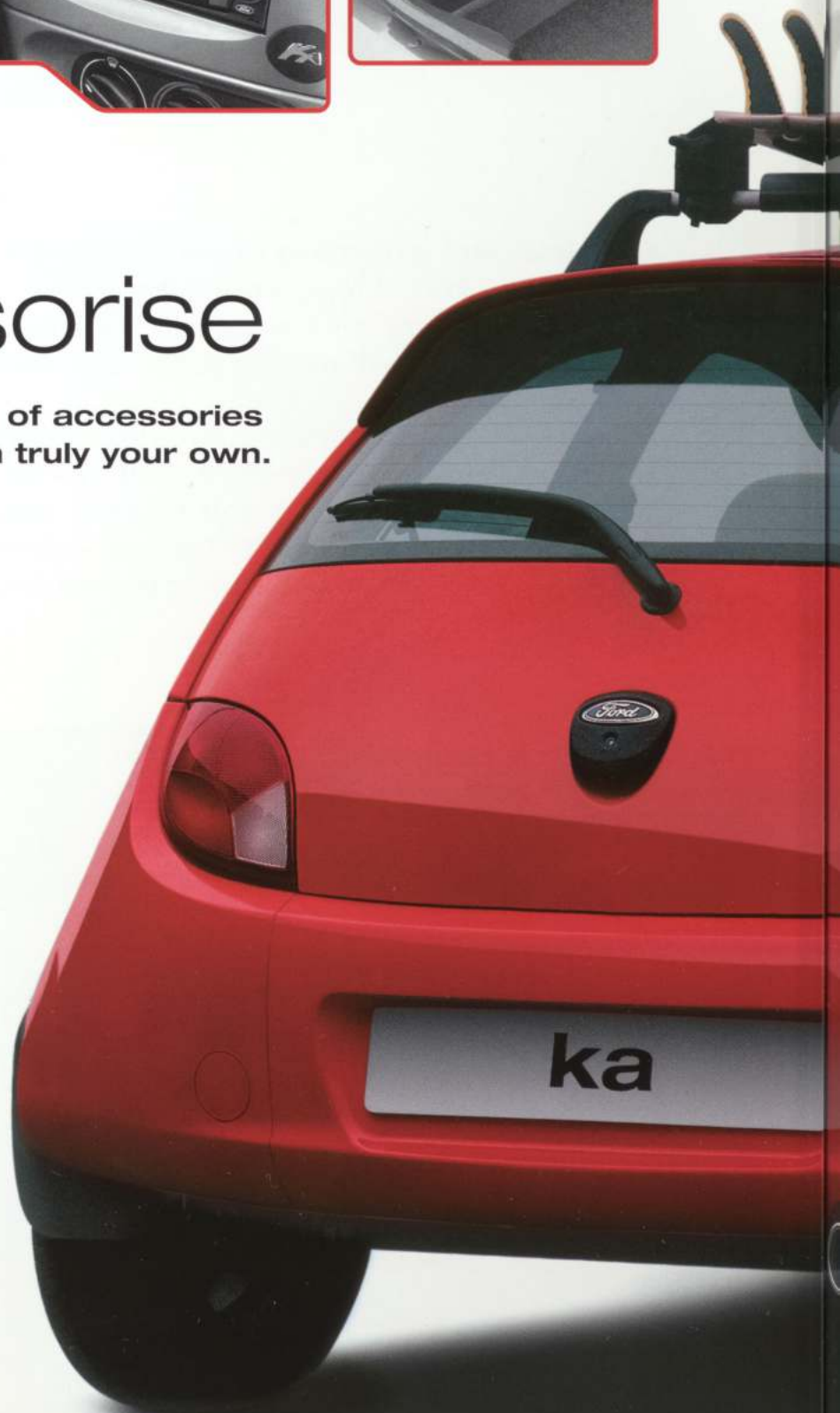
Radio navigation system.

Boot stowage box.



accessorise

Choose from a range of accessories
to make your Ford Ka truly your own.



Scuff plates.



Carpet mats.



Alloy-effect gearshift (for thread fixing only) and handbrake surround.



classic or cool, samba or soul. whatever your taste, whatever your destination, you want your favourites to sound clear and strong.

This is why Ford Ka audio systems are fully integrated and incorporate the Radio Data System (RDS) to update you on vital traffic news (except 1000). They also feature a detachable front bezel to deter theft. All systems (except 1000) have a 'Keycode', and RDS/EON systems register a vehicle identification number into memory.



Ford 1000 Radio/Cassette Player

- Two channel radio/cassette player with a 2 X 5 watts (RMS) / 2 x 14 watts maxi power output.
- FM radio. Stores 3 presets for FM stations.
- Electronic search facilities.



Ford 5000 RDS/EON Radio/Cassette Player

- Two channel radio/cassette player with a 2 x 7 watts (RMS) / 2 x 20 watts maxi power output.
- AM/FM radio. Stores 24 presets for AM/FM stations.
- Electronic search facilities.
- Station name display.
- Dolby noise reduction for tape cassette deck, plus auto reverse and music search.
- Program Type (PTY) button.



Ford 6000 RDS/EON Radio/CD Player

- Two channel radio/CD player with a 2 x 7 watts (RMS) / 2 x 20 watts maxi power output.
- AM/FM radio. Stores 24 presets for AM/FM stations.
- Electronic search facilities.
- Station name display.
- Programme Type (PTY) button.



climate control

Most people associate air conditioning with hot weather, however, it is of benefit all year round. The system also extracts excess moisture from the air, which helps prevent windows misting up in cool weather. The MicronAir filter progressively filters out the tiniest particles of pollen and dust, providing cleaner air. The air recirculation facility also prevents fumes and road dirt entering the car.

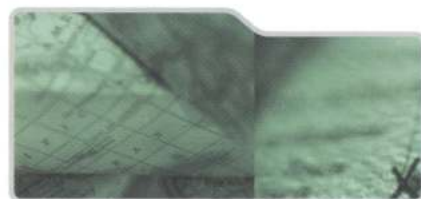


ford**credit** simplicity and choice

As part of Ford Motor Company, Ford Credit offers convenient and competitive financial services to Ford customers. Choose, try, finance and insure your Ford – without having to leave the showroom.

ford**options**

Ford Options is the flexible way to finance your Ford. At the end of the agreement, choose which option suits you best – own the vehicle, return it or choose a new one.



ford**acquire**

Ford Acquire is a simple method of vehicle finance for private customers. Convenient to arrange, and with flexible terms to suit your needs, owning your Ford has never been so easy.



ford **business partner**

As a specialist division of Ford Credit dedicated to partnering businesses, Ford Business Partner will work with you to achieve a complete transport solution.



ford**insure**

Ford Insure offers a wide range of competitive insurance products for you and your Ford, including Payment Protection* to protect your investment and provide worry-free motoring. Buy a Ford and receive 21-day Driveaway Cover** free from the moment of purchase.



what's the next step?

Your local Ford Dealer will be pleased to help if you have any further queries and advise you of current special promotions. To find your local Ford Dealer, please call 0845 7111 888. You can also obtain a personalised quotation for the finance plan of your choice. Alternatively, why not visit us online at

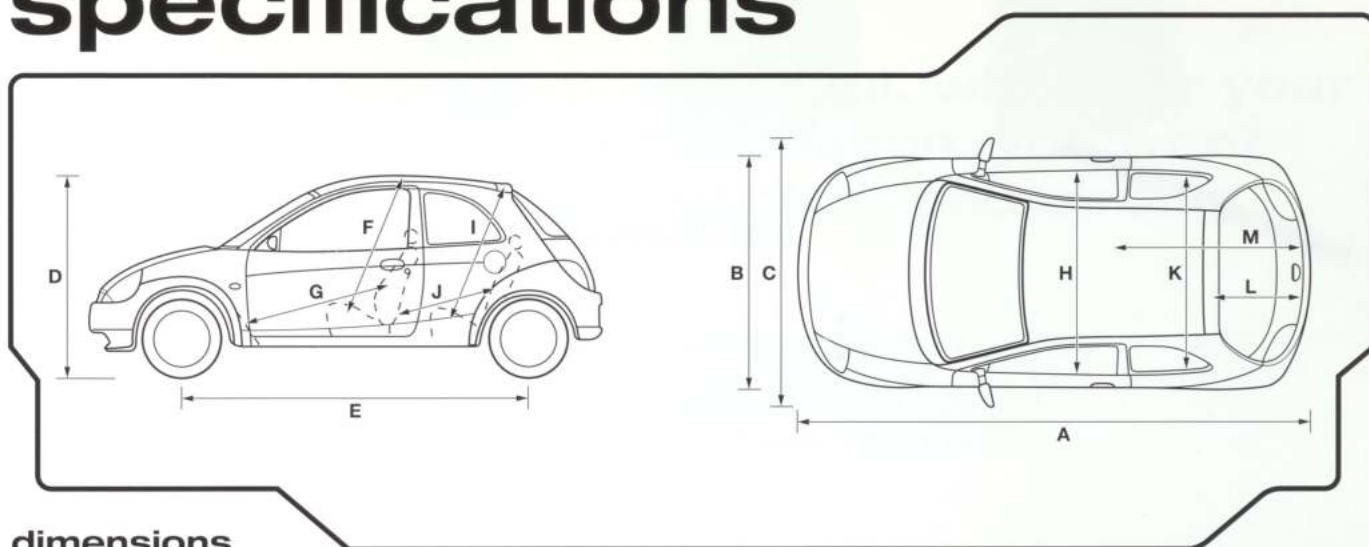
www.ford.co.uk



Finance subject to status and conditions, to over 18s only. Guarantees/Indemnities may be required. Written quotations available on request: Freepost Ford Credit. Correct at time of going to print. Contact your Dealer for terms and conditions. Ford Insure is underwritten by Norwich Union Insurance Limited, registered in England No. 99122. Member of the General Insurance Standards Council. Registered office at 8 Surrey Street, Norwich NR1 3NG.

For our joint protection, calls may be recorded or monitored. *Please refer to Payment Protection policy booklet for full details of benefits and exclusions. **Excesses apply. Please refer to Summary of Cover for details. Maximum 5 vehicles. Not available in conjunction with any other promotion.

specifications



dimensions

Exterior (mm)		
A	Overall length	3620
B	Overall width without mirrors	1631
C	Overall width with mirrors	1827
D	Unladen height	1368
E	Wheelbase	2446
	Front track	1392
	Rear track	1411
Interior (mm)		
Front		
F	Effective headroom	991
G	Maximum effective leg room	1036
H	Shoulder room	1307

Interior (mm)		
Rear		
I	Effective headroom	923
J	Minimum effective leg room	799
K	Shoulder room	1279
Stowable Luggage (litres)*		
L	4-seat mode	186/210
M	2-seat mode (laden to roof)	724
Turning Circle (m)		
Kerb to kerb		9.9
Fuel Tank (litres)		
Capacity (useable)		40

*Measured using the VDA method.
Dimensions may vary dependent on the model and equipment fitted.

engine data

Engine technical features		Maximum power*	Maximum torque*
1.3 HCS EFi (Catalyst)	Cylinders - 4 in-line ■ Fuel injection with EEC V engine management system ■ Electronic breakerless ignition	44 kW (60 PS) at 5000 min ⁻¹ (rpm)	105 Nm at 2500 min ⁻¹ (rpm)
1299 cc			

* Tested in accordance with ISO 1585

kerbweights (kg) ¹⁾

	Ka	Ka Style	Ka Collection	luxuryKa	Gross Vehicle Mass (GVM) (kg)
Ka					
1.3i	871	890	890	935	1265

¹⁾ Represents the lightest kerbweight assuming full fluid levels and 90% fuel levels, subject to manufacturing tolerances and options, etc., fitted.

fuel and performance

	CO ₂ emissions (g/km) ¹⁾	Fuel consumption in L/100 km (mpg) ¹⁾			Performance (Ford test figs.)		
		Urban	Extra Urban	Combined	Max. speed kph (mph)	0-62 mph (0-100 kph) (secs)	31-62 mph (50-100 kph) (secs)*
1.3i (13" tyres)	154	8.3 (32.1)	5.2 (51.4)	6.3 (42.2)	156 (96)	14.7	16.4
1.3i (14" tyres)	165	8.9 (31.7)	5.6 (50.4)	6.8 (41.5)	156 (96)	14.7	16.4

insurance groups

	Ka	Ka Style	Ka Collection	luxuryKa
Ka				
1.3i	2E	2E	3E	4E

* In 4th Gear.

¹⁾All CO₂ emissions figures in g/km and fuel consumption figures in L/100 km (mpg) are from officially approved tests in accordance with EEC Directive 93/116/EC.

The CO₂ emissions and fuel consumption test figures shown in the chart do not express or imply any guarantee of the emissions or fuel consumption of a car of the class in question (see back cover).

All the figures are based on tests conducted on vehicles with standard wheels and tyres; optional or accessory wheels and tyres may have an effect on the emissions and fuel consumption of a vehicle.

Note: All vehicles are 5-speed manual and are equipped with a catalytic converter.

Note: Urban
An engine started from cold in laboratory conditions operated at varying speeds, maximum 50 kph, average 19 kph over a theoretical distance of 4 km.

Extra Urban
Conducted immediately after the urban cycle, it consists of half steady speed driving and half varying speed driving, maximum 120 kph over a distance of 7 km.

Combined
This is an average of the two parts of the test, weighted by the distances covered in each part.



Capri Blue – Solid



Colorado Red – Solid



Neptune Green – Metallic



Metropolis Blue – Metallic



Pepper Red – Metallic



Jewel Green – Metallic



Moondust Silver – Metallic



State Blue – Metallic



Panther Black – Metallic

Note: The car images used are to illustrate body colours only and may not reflect current specification. Colours and trims reproduced within this brochure may vary from the actual colours, due to the limitations of printing processes used.

mechanical features

	Ka	Ka Style	Ka Collection	luxuryKa
Brakes				
Diagonally-split, with dual-line servo-assistance.	-	-	-	-
Front discs, rear drums	-	-	-	-
Steering				
Power-assisted rack-and-pinion (variable ratio)	-	-	-	-
Suspension and Body				
Front - Independent with MacPherson struts, and sub-frame mounted 'A' arm. Anti-roll bar	-	-	-	-
Rear - Twist-beam semi-trailing coil springs	-	-	-	-
Towing eye - Screw-in front and rear	-	-	-	-
Security				
Immobiliser - Passive Anti-Theft System (PATS)	-	-	-	-
Steering column lock	-	-	-	-
Fuel cap - Locking	-	-	-	-
Locks - Central locking	-	-	-	-
Locks - Remote control central locking	-	-	-	-
Vehicle Identification Number (VIN) - Visible	-	-	-	-
Safety				
Airbag - Driver's	-	-	-	-
Front seats - Anti-submarining	-	-	-	-
Seat belts - Front, inertia reel, with grabbers.	-	-	-	-
Rear, two inertia reel	-	-	-	-
Side impact door beams. Steel safety cage with engine compartment cross beam. Energy absorbing crumple zones, front and rear	-	-	-	-
Fuel cut-off inertia switch	-	-	-	-

exterior features

	Ka	Ka Style	Ka Collection	luxuryKa
Exterior Appearance and Styling				
Bumpers - Mid Grey	-	-	-	-
Bumpers - Body colour	-	-	-	-
Black Pillar Decal with "Collection" logo	-	-	-	-
Black B Pillar Decal with "Ka" logo	-	-	-	-
Exhaust trim - Chrome	-	-	-	-
Metallic paint (no extra charge)	-	-	-	-
Radiator grille - Chrome-effect	-	-	-	-
Wheels				
Wheels - 5x13 Steel with full wheelcovers and 165/65 R13 Low Rolling Resistance (LRR) tyres	-	-	-	-
Wheels - 14" 6x2-spoke alloy wheels (steel spare) with 165/60 R14 Low Rolling Resistance (LRR) tyres	-	-	-	-
Exterior Functional				
Aerial - Roof-mounted	-	-	-	-
Door mirrors - Manual internal control, black housings	-	-	-	-
Door mirrors - Manual internal control, body colour housings	-	-	-	-
Door mirrors - Electrically-operated and heated, body colour housings	-	-	-	-
Quickclear Heated Windscreen	-	-	-	-
Heated rear window	-	-	-	-
Wipers - Front, 2 speed, plus intermittent	-	-	-	-
Wipers - Tailgate wiper with electric wash	-	-	-	-
Exterior Lighting				
Halogen headlights, side lights, rear fog light, reversing light	-	-	-	-
High-mounted rear brake light	-	-	-	-
Sun Collection (specification in addition to Ka Collection)				
Electrically-operated full length canvas roof	-	-	-	-

interior features

	Ka	Ka Style	Ka Collection	luxuryKa
Audio				
Stereo FM radio/cassette - Model 1000, removable control panel, 2 speakers	-	-	-	-
Stereo radio/cassette - Model 5000 RDS EON, painted Medium Grey colour, removable control panel, 'Keycode' anti-theft coding	-	-	-	-
Stereo radio/CD - Model 6000 CD/RDS EON, removable control panel, 'Keycode' anti-theft coding	-	-	-	-
Carpet and Trim				
Carpet - non woven velour	-	-	-	-
Door trim - fabric insert (light cyprus vinyl insert on luxuryKa), moulded panel with pull handle/armrest, door bins with cup/can holders and integrated speakers	-	-	-	-
Front carpet mats with Ka logo	-	-	-	-
Gear knob - Leather-trimmed with body colour co-ordinated insert	-	-	-	-
Scuff plates - Stainless steel with Ka logo	-	-	-	-
Interior Lighting				
Courtesy light - Header-mounted, door-operated	-	-	-	-
Load compartment light	-	-	-	-

interior features

	Ka	Ka Style	Ka Collection	luxuryKa
Instruments and Controls				
Instruments - Speedometer, odometer, fuel gauge, trip recorder	-	-	-	-
Sports style white dials and black graphics	-	-	-	-
Warning indicators for oil pressure, engine temperature, direction indicators, high beam, ignition/alternator, low brake fluid/handbrake on, airbag(s), 'lights on' audible warning	-	-	-	-
Illuminated heater controls - 4-speed fan. Four vents with temperature and direction control.	-	-	-	-
Control stalks - Column-mounted for master lights, indicators and wash/wipe functions	-	-	-	-
Tailgate release - Interior power release	-	-	-	-
Steering wheel - Two-spoke incorporating blue Ford oval and horn function	-	-	-	-
Steering wheel - Leather-trimmed incorporating blue Ford oval and horn function	-	-	-	-
Seats and Seat Belts				
Front seat - Driver's height adjustable seat	-	-	-	-
Front seats - Fully reclining with height-adjustable head restraints	-	-	-	-
Seats - Leather Trim	-	-	-	-
Rear seat - Two-position seat adjustment	-	-	-	-
Rear seat - Head restraints	-	-	-	-
Rear seat - 50:50 split back	-	-	-	-
Comfort and Convenience				
Air conditioning - CFC-free	-	-	-	-
Clock - Analogue	-	-	-	-
Clock surround - Medium metallic grey	-	-	-	-
Clock surround - Body colour	-	-	-	-
Clock surround - Pale Steel/Medium metallic grey	-	-	-	-
Mirror - Dipping rear-view	-	-	-	-
Mirror - Drivers Sunvisor	-	-	-	-
Mirror - Passengers Sunvisor	-	-	-	-
Storage - Headlining storage net (not available with sunroof)	-	-	-	-
Storage - Rear quarter trim covered bin	-	-	-	-
Cup/can holders - Driver's and front passenger's door	-	-	-	-
Windows - Electrically-operated front windows	-	-	-	-
Windows - Opening rear quarter windows	-	-	-	-
Load Compartment				
Storage nets	-	-	-	-

options at extra cost

	Ka	Ka Style	Ka Collection	luxuryKa
Equipment				
Air conditioning - CFC-free	-	-	-	-
Sunroof - Power topslider (with auto close function) *	-	-	-	-
Tailgate spoiler - Body colour	-	-	-	-
Wheels - 14" 8-spoke 'silver' alloy (steel spare) with 165/60 R14 Low Rolling Resistance (LRR) tyres	-	-	-	-
Wheels - 14" 6-spoke alloys (steel spare) with 165/60 R14 Low Rolling Resistance (LRR) tyres	-	-	-	-
Option Packs				
Convenience Pack - 'Quickclear' heated windscreen, remote control central locking and door mirrors with body colour housings (can only be supplied with Air Conditioning, which must be charged separately)	-	-	-	-
Reflex Pack 1 - including Passenger Airbag, drivers and passenger's seat side airbags, drivers seat front stowage pouch, front seat back stowage pocket, height adjustable head restraints**	-	-	-	-
Reflex Pack 2 - including ABS, Passenger Airbag, drivers and passenger's seat side airbags, drivers seat front stowage pouch, front seat back stowage pocket, height adjustable head restraints**	-	-	-	-
Audio				
Stereo radio/cassette - Model 5000 RDS EON, painted Medium Grey colour, removable control panel, 'Keycode' anti-theft coding	-	-	-	-
Stereo radio/CD - Model 6000 RDS EON, painted Medium Grey colour, removable control panel, 'Keycode' anti-theft coding	-	-	-	-
Stereo radio/CD - Model 5000 RDS EON with CD Autochanger, removable control panel, 'Keycode' anti-theft coding	-	-	-	-
Body Colour				
Paint - Metallic	-	-	-	-

* Auto close function is operated when key is turned to position 0, after 3 seconds the sunroof closes automatically

* Note: Front seat back stowage pocket, height adjustable rear head restraints, drivers seat height adjust, 2 position splitfold rear seat back included when Reflex Pack ordered on Ka

** Note: A rear-facing child seat should never be placed in the front passenger seat when the Ford vehicle is equipped with a front passenger airbag.

- = Standard - = Optional at extra cost

specifications

body colour and trim availability

Model	Trim Material	Environment	Trim Colour	Solid body colours		Metallic body colours*							
Ka	Kimono	Midnight Black		GB	GR		GR	GW		GW			
Ka Style	Aqua Cascade	Midnight Black	Aqua	X	X		X	X	X	X	X		
	Aqua Cascade	Truffle	Truffle				X		X	X	X		
Ka Collection	Invers	Midnight Black	Black					S	B	S	G	B	G
(inc Sun Collection)	Invers	Midnight Black	Red		R		R						
luxuryKa	Leather	Truffle	Light Cyprus				X		X	X	X		
	Leather	Midnight Black	Midnight Black				X	X	X	X			

* Metallic paint is optional at extra cost on Ka and Style

SEAT FABRIC COLOUR KEY
GW - GENERIC WHITE
GB - GENERIC BLUE
GR - GENERIC RED

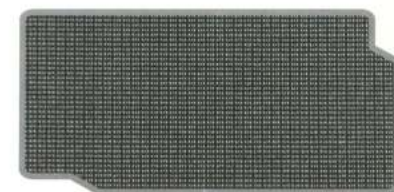
STYLE DETAILS
G - GREEN
S - SILVER
R - RED



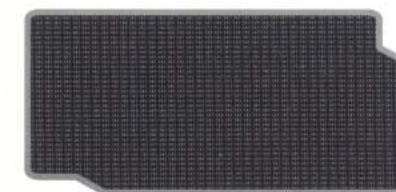
Cascade in Aqua



Cascade in Truffle



Kimono in White



Kimono in Blue



Kimono in Red



Invers in Red



Invers in Black



Light Cyprus leather



Midnight Black leather



1.



2.



3.



4.

- 5 x 13 steel wheels with full wheelcovers (standard on Ka, Ka Style and Ka Collection)
- 14" 6 x 2-spoke alloy wheels (standard on luxuryKa)
- 14" 8-spoke 'silver' alloy wheels (optional on Ka Collection)
- 14" 6-spoke alloy wheels (optional on Ka and Ka Style)



BY APPOINTMENT TO
HER MAJESTY THE QUEEN
MOTOR VEHICLE MANUFACTURERS
FORD MOTOR COMPANY LIMITED
BRENTWOOD ESSEX



BY APPOINTMENT TO
H.M. QUEEN ELIZABETH THE QUEEN MOTHER
MOTOR VEHICLE MANUFACTURERS
FORD MOTOR COMPANY LIMITED
BRENTWOOD ESSEX



BY APPOINTMENT TO
H.M. THE PRINCE OF WALES
MOTOR VEHICLE MANUFACTURERS
FORD MOTOR COMPANY LIMITED
BRENTWOOD ESSEX

the ford feature model

To simplify your decision-making, we now offer a Ford Feature Model for each range. Each Ford Feature Model includes, as standard, the most popular features from the range. Most importantly, Ford Feature Models give you great value for money.

UEFA champions league

Ford. Your dependable football companion that takes you all the way there and back on your football journey. Destination Football.

forddrive

The easiest way to get to know your preferred Ford Feature Model is through our Ford Drive Demonstration Programme. This gives you a complete test drive experience professionally and efficiently, with the services of your own Ford Drive co-ordinator.

fordmobility

MAGIC (Mobility and General Information Centre) is a Ford-dedicated care centre created to provide free and comprehensive information on all motoring and mobility issues to anyone requiring such assistance. In particular, if you are a recipient of HRDLA, elderly or a carer, you will find MAGIC an invaluable one-stop shop for all sorts of information. For example, MAGIC provides information on the Ford Dealer network, Ford vehicle information – detailing dimensions such as door heights and widths, as well as pricing, comparisons with other manufacturers' vehicles, assessment centres, vehicle adaptations, charities, even holiday information.

MAGIC has many special offers for HRDLA recipients, call free on 0800 240 241.

fordprotect

Every new Ford car sold is protected by 12 months' unlimited mileage manufacturer's warranty, plus the option of extending this warranty with a no-cost 3-year/60,000 miles Ford Protect Plan. Upgrades are also available, giving you the option of worry-free motoring for up to 5 years.

fordjourney

For a straightforward, quick and worry-free way to buy a new Ford online, visit **www.fordjourney.com**. Offering you access to the widest selection of new Ford cars available on the Internet, and fast delivery, Ford Journey puts you in control.

ford rapid fit

The national fast-fit network backed by Ford, offering you the convenience of a 'no-appointment-necessary, while-you-wait' service covering tyres, exhausts, brakes, batteries and much more. There are over 300 sites nationwide.

ford accident repair centres

If your Ford is involved in an accident, your Ford Dealer is best placed to return it to its pre-accident condition. Dealerships displaying the Ford Accident Repair Centre sign all meet the rigorous customer service and repair quality standards laid down by Ford, and offer a three-year workmanship guarantee.

ford customer relationship centre

In the unlikely event that your Ford Dealer can't help you or you need to speak to Ford directly, the Ford Customer Relationship Centre is just a phone call away. Call local rate **0845 841 1111**.

The Government fuel figures do not express or imply any guarantee of the fuel consumption of any particular car. The cars themselves have not been tested and there are inevitably differences between individual cars of the same model. In addition, a car may incorporate particular modifications. Furthermore, the driver's style and road and traffic conditions, as well as the extent to which the car has been driven and the standard of maintenance, will affect its fuel consumption.

Insurance Groups are only as recommended by the Association of British Insurers. You should always consult your insurance adviser for confirmation.

Illustrations, descriptions and specifications.

This catalogue was correct at the time of going to print. However, Ford policy is one of continuous product development. The right is reserved to change specifications, colours and prices of the models and items illustrated and described in this publication at any time. For the latest details always consult your Ford Dealer.

Optional Equipment. Throughout this publication, wherever a feature is described as being an 'Option' or 'Optional Fitment/Pack' etc, you should assume that it will be at extra cost to the base vehicle, unless specifically stated to the contrary.

All models and colour combinations are subject to availability.

BJN 16291. Designed and produced by Burrows, Shenfield, Essex, England. Produced by Werbeagentur Zetweka, PN 173502/0202/200m/GB

Published by Ford Motor Company Limited, Brentwood, Essex, England.

Registered in England No 235446.

FA 1269/14 March 2002.

© Ford Motor Company Limited.

www.ford.co.uk

Dealer: