

ford**fusion**

**FILE COPY - DO NOT
REMOVE**

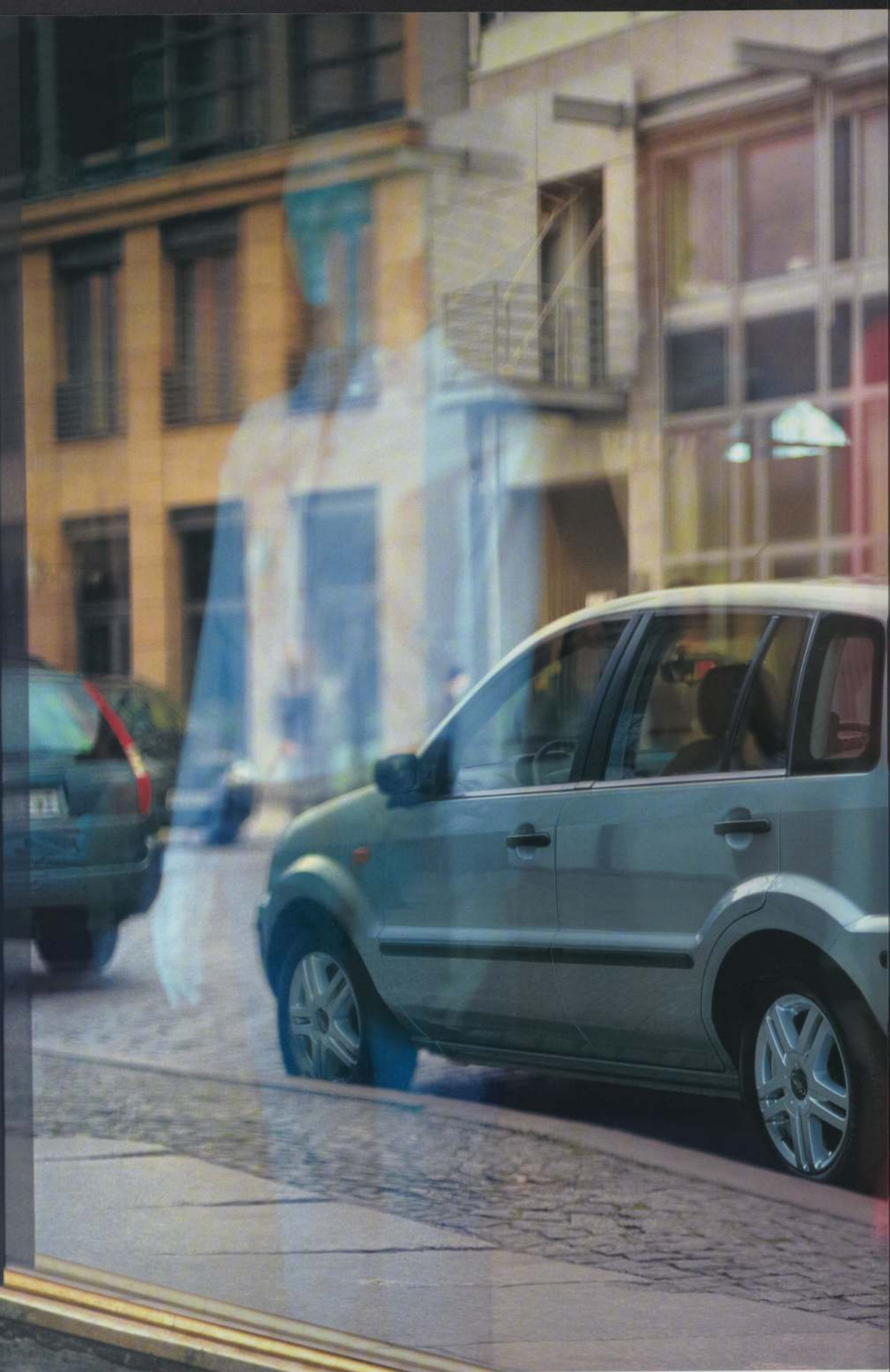


Contents

- 8 Ford Fusion
- 10 Bodystyle and series**
- 11 Exterior and interior dimensions
- 12 Fusion 1
- 14 Fusion 2
- 16 Fusion 3
- 18 Flexible space
- 20 Driving and technology**
- 23 Engine data
 - Fuel and performance
 - Insurance groups
- 24 Mechanical features
 - Model availability
- 25 Safety and security**
- 26 Finance and services**
- 28 Features and colours**
- 29 Standard and optional wheels
- 30 Exterior features
- 31 Interior features
- 33 Audio and communication systems
 - Optional packs
- 34 Trim and body colours















8 **Model** Fusion 2. **Options** (at extra cost) Vitro metallic paint and smokers pack (dealer-fitted option)
Accessories Becker Traffic Pro Satellite navigation system



Ford Fusion

Get the most out of the city with the all-new Ford Fusion. tough and protective, compact and agile, its commanding road presence inspires confidence and brings a unique new dimension to urban motoring.

Ford Fusion blurs the boundaries between traditional car categories. a smart fusion of the best available elements, without compromise. It takes a tough exterior design, adds a higher driving position and panoramic all-round visibility, then blends them with a versatile, people-focused interior and outstanding manoeuvrability. The result is that the Ford Fusion is ready for everything the city has to throw its way.

The all-new Ford Fusion. Not simply a new car, it's the first of a kind.



Choose your fordfusion in the following sections

- 10 **Bodystyle and series**
- 20 **Driving and technology**
- 25 **Safety and security**
- 26 **Finance and services**
- 28 **Features and colours**

Spacious accommodation overlooking the city.



bodystyle and series

To own a ford**fusion** is to take every journey in your stride. Which is why you will find rugged and protective five-door styling that can handle the challenges of city traffic with ease. And ingeniously planned, family-sized space with elevated seating for up to five adults. All in one compact package. There is even a choice of three individual series so you can select the ford**fusion** that is just right for you. From the contemporary cool of the Fusion 1 to the spirited and dynamic Fusion 2, or the cosmopolitan luxury of the Fusion 3. Which ford**fusion** will you choose?



Exterior dimensions

Exterior (mm)	5-door
Overall length	4020
Overall width without mirrors	1721
Overall width with mirrors	1952
Overall height	1488
Liftover height (to boot lip)	527
Wheelbase	2485
Front track	1474
Rear track	1435

Dimensions may vary dependent on the model and equipment fitted.

Interior dimensions

Front/rear (mm)	5-door
Effective headroom	1015/981
Maximum effective leg room	1045/953
Shoulder room	1358/1324
Stowable luggage (cu m)[†]	
5-seat mode	0.337
2-seat mode (laden to belt line)	0.734
2-seat mode (laden to roof)	1.175

[†] Measured using the VDA method. Dimensions may vary dependent on the model and equipment fitted.

Choose your fordfusion** from the series**

12 Fusion 1 14 Fusion 2 16 Fusion 3



Car shown features optional (at extra cost) Panther Black metallic paint, air conditioning and smokers pack (dealer-fitted option)



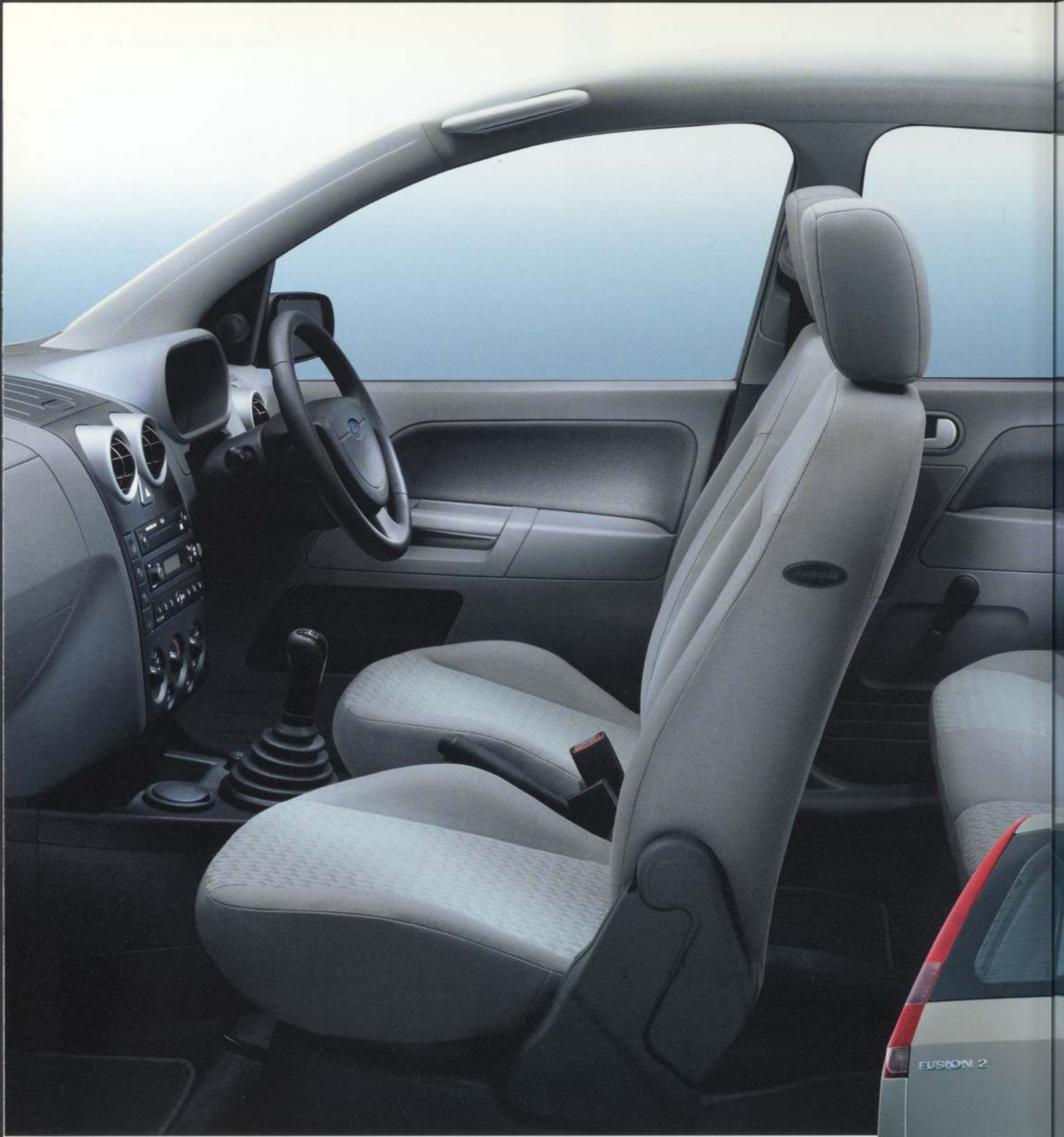
Fusion 1

Key features

- 15" steel wheels with full wheelcovers
- Body colour bumpers with black protective inserts and bodyside mouldings
- Leather-wrapped steering wheel
- Power-assisted steering
- Central Locking
- Intelligent Protection System (IPS) with dual-stage driver's and front passenger's airbags*
- Immobiliser - PATS (Passive Anti-Theft System)
- Remote tailgate release
- 60:40 split/folding rear seats with folding back and flip-up seat cushion
- Instrument panel-mounted flip-top storage compartment
- Storage tray beneath flip-up front passenger seat cushion
- Stereo radio/cassette
- Tilt-adjustable steering column
- Manual control door mirrors
- Driver's seat manual height adjustment
- Head restraints and three-point inertia reel seat belts for all five seats

*Note: A rear-facing child seat should never be placed in the front passenger seat when the Ford vehicle is equipped with a front passenger's or side airbags.





Car shown features optional (at extra cost) Vitro metallic, accessory floor mats and smokers pack (dealer-fitted option)

14 **Choose your fordfusion from the series**
12 Fusion 1 14 Fusion 2 16 Fusion 3



Fusion 2

Key features, in addition to Fusion 1

- CFC-free air conditioning with air recirculation
- Electrically-operated front windows
- Electrically-operated and heated door mirrors
- Stereo radio/CD
- 'Quickclear' heated front windscreen
- Remote central/double locking with illuminated entry
- Fold-flat front passenger seat back with integrated work surface
- Door release levers with satin aluminium finish
- Door ajar warning light in instrument cluster





Car shown features optional (at extra cost) Oyster Silver metallic paint, accessory floor mats and smokers pack (dealer-fitted option)

Fusion 3

Key features, in addition to Fusion 2

- 15" alloy wheels
- Stereo radio/CD with remote ICE controls
- Front fog lights
- Perimeter Alarm
- Velour Seat Fabric
- Leather-covered gear knob with satin aluminium insert
- Front map reading lights
- Chrome-finish radiator grille surround
- Courtesy light with theatre-style dimming
- Load space retention net





Flexible space

Innovative solutions come from blending fresh thinking with proven technology. So you will find that the Ford Fusion's clever interior is influenced by both new and established ideas.

Take the rear seats, for example. A 60:40 split seat back and cushion mean that you can carry passengers, luggage or a combination of both.

Fusion 2 and Fusion 3 models add even more neat features, like the front passenger seat back that can be

folded flat to double-up as a work surface or table. Or help to swallow loads of up to 2.3 metres in length.

Whichever model you choose, you will find plenty of useful storage space. There are two front door pockets, each designed to hold a 33 cl can of drink, a large glovebox and a smart flip-top storage compartment on top of the instrument panel. Plus, a cleverly concealed storage tray beneath the flip-up front passenger's seat cushion for keeping items away from prying eyes.



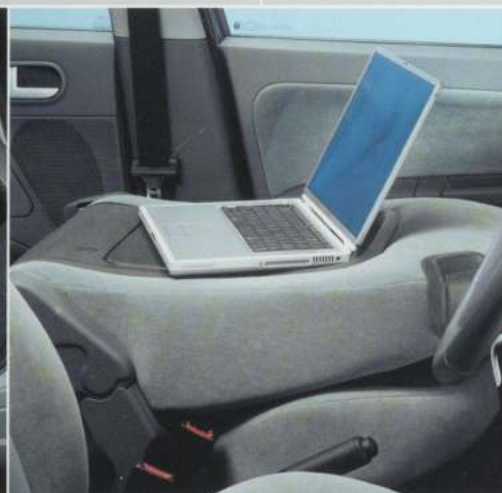
Ingenious versatility The Ford Fusion is all the transport you will ever need. Five comfortable adult-sized seats when you want them; four, three, two or even one seat when you don't, via its ingenious seat folding system. (Fold-flat front passenger seat available on Fusion 2 and Fusion 3 models.)



Under-seat storage Hidden beneath the front passenger seat you will find a handy storage tray, perfect for keeping items safely out of sight.



Low loading lip Access to the Ford Fusion's generous luggage space – up to 1175 litres with the rear seats folded down – is easy, thanks to its thoughtfully low loading lip. (An anti-slip mat is available from the Ford Fusion accessory range.)



Fold-flat passenger seat The front passenger seat backrest folds forward to convert into a flat, practical table. Ingenious, isn't it? (Fusion 2 and Fusion 3 only.)



Storage compartment The convenient flip-top storage compartment is ideal for keeping items safely to hand while on the move.



driving and technology

Discover the real meaning of driving quality with the all-new ford **fusion**. Packed full of responsive power, its fresh range of multi-valve petrol and common-rail turbo diesel engines offers a keen blend of eager performance and outstanding efficiency. A positive-shifting five-speed manual transmission is standard across the range, with the new Durashift EST transmission* (available on selected models). This innovative transmission lets you choose between either a sporty clutchless sequential manual gearshift, or a fully automatic mode for a more relaxed drive. Smooth-riding suspension effortlessly absorbs uneven road surfaces, while the optional Electronic Stability Programme* (ESP) helps to keep you on the right track. And to reduce effort when parking, we've fitted a special low-friction power steering system. That should take a weight off your mind.



Command driving position A tall body and elevated seats help to provide a great view of the road ahead for effortless parking and manoeuvrability. We call it a command driving position. You'll simply know that it's easier to see and be seen.



Added confidence Some cars have a bonnet that slopes steeply out of view, making it difficult to judge their size when parking and manoeuvring. Not so the Ford Fusion. It has been specifically designed to help drivers see more of the bonnet, for greater confidence behind the wheel.



Enhanced visibility The Ford Fusion's exceptionally light and airy interior comes courtesy of its unusually large glass area. The rear seat head restraints help too, retracting over the seat back when they're not in use and making it easier to see out. Clearly a better idea.

Greater presence

Settle behind the wheel of the Ford Fusion and you will feel head and shoulders above ordinary cars. Quite literally. That's because the Ford Fusion stands taller than its conventional counterparts. And has a raised seating position too, rewarding you and your passengers with an unrivalled view of the world around you.

This powerful road presence is reinforced by a selection of refined and confident engines. Choose between two free-revving Duratec 16V petrol engines – an 80 PS

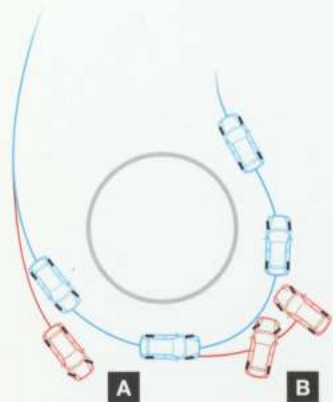
1.4-litre or a 100 PS 1.6-litre. Both are equipped with an electronic throttle for instant response and economical performance.

Or perhaps you prefer diesel power? If so, you will find that the new Duratorq 1.4-litre TDCi turbo diesel engine is in a class of its own. Smoother, quieter, more powerful and more economical than you would ever expect, it boasts new-generation common-rail injection technology for the ultimate in refined efficiency.

*Electronic Select Transmission (EST) and Electronic Stability Programme (ESP) are both available from late 2002.

Refined performance

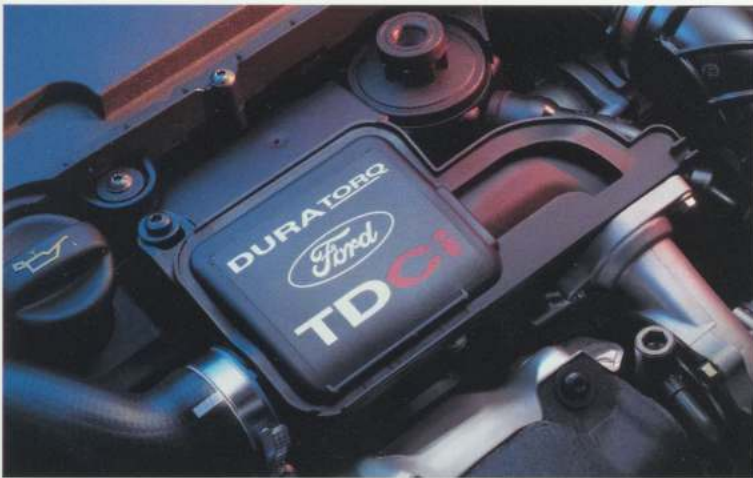
With the Ford Fusion, a rewarding drive comes as standard thanks to its new range of advanced petrol and diesel engines. Engineered for efficiency and low weight, each engine promises a balanced combination of dependable power, fuel economy and reduced emissions.



- Vehicle with ESP.
- Without ESP.
- A** Vehicle experiences understeer on approach.
- B** Vehicle experiences oversteer on exit to bend.

ESP* system

Using space-derived technology, the optional Electronic Stability Programme* (ESP) system senses when the car is deviating from the driver's chosen line and automatically applies the necessary power and braking adjustments to correct its road position. Available on selected models, at extra cost.



Power with economy The new 1.4-litre Duratorq TDCi turbo diesel engine uses the latest-generation common-rail injection technology to deliver impressive torque and exceptional fuel economy. In fact, it enables the Ford Fusion to comfortably travel more than 600 miles on a single tank of diesel*.



Durashift EST transmission** Designed to combine the fuel efficiency of a 5-speed manual transmission with the relaxed driving style of an automatic, the optional new Durashift EST transmission** offers a choice between sporty clutchless sequential manual and relaxed, fully automatic gearshifts.

Engine data

	Engine technical features	Maximum power ^o	Maximum torque ^o
1.4i Duratec 16V 1388 cc	Cylinders – 4 in-line • Electronic fuel injection with electronic engine management system • Electronic distributorless ignition with knock sensor	58 kW (80 PS) at 5700 min ⁻¹ (rpm)	124 Nm at 3500 min ⁻¹ (rpm)
1.6i Duratec 16V 1596 cc	Cylinders – 4 in-line • Electronic fuel injection with electronic engine management system • Electronic distributorless ignition with knock sensor	74 kW (100 PS) at 6000 min ⁻¹ (rpm)	146 Nm at 4000 min ⁻¹ (rpm)
1.4 Duratorq TDCi 1399 cc	Cylinders – 4 in-line • Common Rail direct fuel injection with electronic engine management system • Turbo • Exhaust Gas Recirculation	50 kW (68 PS) at 4000 min ⁻¹ (rpm)	160 Nm at 2000 min ⁻¹ (rpm)

^oTested in accordance with ISO 1585.

Fuel and performance

5-door Ford Fusion	CO ₂ emissions (g/km) ^{oo}	Fuel consumption L/100 km (mpg) ^{oo}			Performance ^o		
		Urban	Extra Urban	Combined	Max. speed km/h (mph)	0-62 mph 0-100 km/h (secs)	31-62 mph 50-100 km/h* (secs)
1.4i Duratec 16V (80 PS)	154	8.5 (33.2)	5.3 (53.3)	6.5 (43.5)	163 (101)	13.7	16.4
1.6i Duratec 16V (100 PS)	157	9.0 (31.4)	5.3 (53.3)	6.6 (42.8)	180 (112)	10.9	13.5
1.4 Duratorq TDCi (68 PS)	116	5.2 (54.3)	3.9 (72.4)	4.4 (64.2)	159 (99)	15.5	15.4
1.4i Duratec 16V (80 PS) petrol – Durashift EST	153	8.3 (34.0)	5.4 (52.3)	6.4 (44.1)	164 (102)	14.5	16.7

* In 4th gear. ^o Ford test figures. ^{oo} All CO₂ emissions figures in g/km and fuel consumption figures in L/100 km are from officially approved tests in accordance with EEC Directive 93/116/EC. The CO₂ emissions and fuel consumption test figures shown in the chart do not express or imply any guarantee of the emissions or fuel consumption of a car of the class in question. All the figures are based on tests conducted on vehicles with standard wheels and tyres; optional or accessory wheels and tyres may have an effect on the emissions and fuel consumption of a vehicle. **Note:** All vehicles are 5-speed manual. All petrol engines are equipped with a catalytic converter. **Note: Urban** An engine started from cold in laboratory conditions operated at varying speeds, maximum 50 km/h, average 19 km/h over a theoretical distance of 4 km. **Extra Urban** Conducted immediately after the urban cycle, it consists of half steady speed driving and half varying speed driving, maximum 120 km/h over a distance of 7 km. **Combined** This is an average of the two parts of the test, weighted by the distances covered in each part.

Insurance groups

5-door Ford Fusion	Fusion1	Fusion2	Fusion3
1.4i Duratec 16V (80 PS) petrol	4E	5E	
1.6i Duratec 16V (100 PS) petrol		6E	6E
1.4 Duratorq TDCi (68 PS) diesel	4E	5E	tba
1.4i Duratec 16V (80 PS) petrol – Durashift EST	tba	tba	tba

*Based on the official (combined cycle) fuel consumption figures.

**Available from late 2002.

Mechanical features

	Fusion1	Fusion2	Fusion3
Brakes			
Diagonally-split, with dual-line servo-assistance. Front discs, rear drums	●	●	●
Anti-lock brakes (ABS) with electronic brake-force distribution	○	○	○
Fuel Tank			
Useable capacity – 45 litres	●	●	●
Steering			
Rack-and-pinion	●	●	●
Power-assisted	●	●	●
Steering column – Tilt-adjustable	●	●	●
Suspension and Body			
Front – Independent with MacPherson struts, and subframe-mounted 'L' arm. Anti-roll bar	●	●	●
Rear – Twist-beam with coil springs	●	●	●
Towing eyes – Detachable front and welded rear	●	●	●
Turning Circle			
Kerb to kerb 9.8 m	●	●	●

● Standard ○ Option, at extra cost

Weights and towing

	Kerbweights (kg) [#]			Gross Vehicle Mass (kg)	Max. Braked towing Limit at GVM (kg)
	Fusion 1	Fusion 2	Fusion 3		
5-door Ford Fusion					
1.4i Duratec 16V (80 PS) petrol	1145	1157		1605	900
1.6i Duratec 16V (100 PS) petrol		1163	1199	1605	900
1.4 Duratorq TDCi (68 PS) diesel	1177	1189	1226	1640	750
1.4i Duratec 16V (80 PS) petrol (ASM)	1150*	1162*	1199*	1605	900

[#] Represents the lightest kerbweight assuming full fluid levels, and 75kg allowance for the driver, subject to manufacturing tolerances and options, etc., fitted. **Key:** This table shows the availability of engine and gearbox combinations on Ford Fusion models and their resulting kerbweights. All vehicles are 5-speed manual. All petrol engines are equipped with a catalytic converter. **Towing limits** quoted represent the maximum towing ability of the vehicle at its Gross Vehicle Mass to restart on a 12 per cent gradient at sea level. The performance and economy of all models will be reduced when used for towing.

*Available from late 2002.

Safety and security

	Fusion1	Fusion2	Fusion3
Safety			
Fuel cut-off – Inertia switch (petrol only)	●	●	●
Side impact door beams, front and rear. Steel safety cage with engine compartment cross beam.	●	●	●
Energy absorbing crumple zones, front and rear	●	●	●
Steering column – Additional bracing	●	●	●
Airbags – Driver's and front passengers*	●	●	●
Airbags – Front side thorax airbags*	□	□	□
Airbags – Side air-curtain airbags deployed from the headlining	□	□	□
Seat belts – Front, inertia reel, lap and diagonal, with grabbers, pre-tensioners and height-adjustable mounts.	●	●	●
Rear, inertia reel, lap and diagonal	●	●	●
Security			
Alarm – Perimeter			●
Fuel cap – Locking with body colour flap	●	●	●
Immobiliser – Passive Anti-Theft System (PATS)	●	●	●
Locks – Anti-burst, high security, shielded with strengthened mountings, childproof on rear door	●	●	●
Locks – Central locking	●		
Locks – Remote central, double locking with illuminated entry (includes selectable unlock (one door/all doors) and 'theatre-style' dimming courtesy lights)		●	●
Vehicle Identification Number (VIN) – Visible	●	●	●

* Note: A rear-facing child seat should never be placed in the front passenger's seat when the Ford vehicle is equipped with a front passenger's or side airbags.

● Standard ○ Option, at extra cost □ Part of an option pack (See page 33)

safety and security

The ford**fusion** is engineered to inspire confidence. So the latest safety and security features are all available. Beneath its tough, protective shell you will find an ultra-strong safety cell, designed to absorb impact energy in a safe and controlled manner. For the ultimate in reassurance, the ford**fusion**'s Intelligent Protection System offers a combination of up to six airbags, including 'smart' dual-stage front airbags that react to the severity of an impact. And, to defend it against unwanted attention, we've included an advanced Passive Anti-Theft System (PATS) engine immobiliser, high-security shielded locks and a visible Vehicle Identification Number to help keep your ford**fusion** where it belongs.



'Smart' airbags

The Ford Fusion's dual-stage front airbags* feature new 'smart' technology. This adjusts the inflation pressure and deployment rate, according to the severity of the impact, for the best possible protection. Side thorax airbags and side curtain airbags* are available as options.

Side curtain airbags*

The Ford Fusion is one of the first small cars to be offered with the option of side curtain airbags*. Hidden behind the headlining, they are programmed to descend in the event of a side impact to help protect the front and rear seat outer occupants from injury.

Rigid body structure

It's always better to try to avoid an incident in the first place. So beneath the Ford

Fusion's stylish lines is an ultra-stiff body structure that provides the foundation for its excellent directional stability and control.

Anti-lock brakes

Optional Electronic anti-lock brakes (ABS) and electronic brake-force distribution (EBD) help you to maintain control in an emergency and enhance your ability to bring the Ford Fusion to a safe halt.

Electronic Stability Programme (ESP)*

At the first sign of any deviation from your chosen course, the optional ESP* system is designed to help restore stability and enable you to retain control.

'Smart' airbags

The Ford Fusion's dual-stage front airbags_ feature new 'smart' technology. This adjusts the inflation pressure

Intelligent Protection System

At the heart of Ford Fusion's safety technology is its advanced Intelligent Protection System.

Derived from technology first seen in the award-winning Ford Mondeo, Fusion's Intelligent Protection System uses sensors that can determine the nature of an incident in a fraction of a second, and cleverly activate the most appropriate safety device for maximum passenger protection.

and deployment rate, according to the severity of the impact, for the best possible protection. Side thorax airbags and side curtain airbags_ are available as options.

Side curtain airbags

The Ford Fusion is one of the first small cars to be offered with the option of side curtain airbags. Hidden behind the headlining, they are programmed to descend in the event of a side impact to help protect the front and rear seat outer occupants from injury.

Advanced seat belt system

All five seats are fitted with three-point inertia reel seat belts. The front seat belts feature pyrotechnic pretensioners that remove slack from the webbing in an impact, and load-limiting retractors that progressively release a small amount of

webbing to help reduce the risk of chest injury.

Passenger airbag deactivation switch

Ignition key-activated switch allows you to turn off the front passenger airbag when carrying a rear-facing child seat in the front passenger seat (available as an accessory for Ford Dealer-fit only).

Anti-submarining seats

The Ford Fusion's seats each have anti-submarining ramps under the front edges of the cushions to help prevent passengers sliding under the seat belts in a front impact.

Decoupling brake pedal

To help reduce the risk of leg injury to the driver, the brake pedal is designed to collapse at the moment of impact.

Side-impact protection

Cold-rolled steel beams inside the doors provide extra protection in the event of a side impact.

*Note: A rear-facing child seat should never be placed in the front passenger seat when the Ford vehicle is equipped with a front passenger's, side or curtain airbags.

*Available from late 2002.



finance and services

Across the UK, a dedicated network of Ford Dealers is equipped and trained to meet the needs of today's drivers. Because of our coveted reputation for quality and reliability, from the moment your new vehicle leaves the showroom, you are assured of lasting, attentive service in many ways. Ford not only cares through Dealers, we also offer a variety of finance and leasing schemes to suit the needs of both the private and business customer. With our wide choice of plans and services no one is more committed to delivering complete motoring confidence and total peace of mind than Ford.

fordcredit

As part of Ford Motor Company, Ford Credit offers convenient and competitive financial services to Ford customers. Choose, try, finance and insure your Ford – without having to leave the showroom.

Ford Options Ford Options is the flexible way to finance your Ford. At the end of the agreement, choose which option suits you best – own the vehicle, return it or choose a new one.

Ford Acquire Ford Acquire is a simple method of vehicle finance for private customers. Convenient to arrange, and with flexible terms to suit your needs, owning your Ford has never been so easy.

Ford Business Partner As a specialist division of Ford Credit dedicated to partnering businesses, Ford Business Partner will work with you to achieve a complete transport solution.

Ford Insure Ford Insure offers a wide range of competitive insurance products for you and your Ford, including Payment Protection* to protect your investment and provide worry-free motoring.

Buy a Ford and receive Driveaway Cover** free from the moment of purchase.

What's the next step? Your local Ford Dealer will be pleased to help if you have any further queries and advise you of current special promotions.

To find your local Ford Dealer, please call 0845 7111 888.

You can also obtain a personalised quotation for the finance plan of your choice.

Services

Company Car Drivers Talkback – the company car drivers' club offers members extended test drives, tax and buying advice as well as special offers and invitations to special driver events. To join, log on to www.talkbackclub.com or call 0845 605 55 66 – it's free and you don't even have to drive a Ford.

Ford Mobility MAGIC (Mobility and General Information Centre) is a Ford-dedicated care centre created to provide free and comprehensive information on all motoring and mobility issues to anyone requiring such assistance. MAGIC has many special offers for HRDLA recipients, or Motability scheme users, call free on 0800 240 241.

Ford Protect Every new Ford car sold is protected by 12 months' unlimited mileage manufacturer's warranty, plus the option of extending this warranty with a no-cost 3-year/60,000 miles Ford Protect Plan. Upgrades are also available, giving you the option of worry-free motoring for up to 5 years.

Ford Journey For a straightforward, quick and worry-free way to buy a new Ford online, visit www.fordjourney.com. Offering you access to the widest selection of new Ford cars available on the Internet, and fast delivery, Ford Journey puts you in control.

Ford Rapid Fit The national fast-fit network backed by Ford, offering you the convenience of a 'no-appointment-necessary, while-you-wait' service covering tyres, exhausts, brakes, batteries and much more. There are over 300 sites nationwide.

Ford Accident Repair Centres If your Ford is involved in an accident, your Ford Dealer is best placed to return it to its pre-accident condition. Dealerships displaying the Ford Accident Repair Centre sign all meet the rigorous customer service and repair quality standards laid down by Ford, and offer a three-year repair guarantee.

Ford Customer Relationship Centre In the unlikely event that your Ford Dealer can't help you or you need to speak to Ford directly, the Ford Customer Relationship Centre is just a phone call away. Call local rate 0845 841 1111.

Ford Rental – local service nationwide Providing quality car and van rental from Ford's latest model range. For further information contact your local Ford Dealer.

Alternatively, why not visit us online at www.fordcredit.co.uk

Finance subject to status and conditions, to over 18s only. Guarantees/Indemnities may be required. Written quotations available on request: Freepost Ford Credit. Correct at the time of going to print. Contact your Dealer for terms and conditions. Ford Insure is underwritten by Norwich Union Insurance Limited, registered in England no. 99122. Member of the General Insurance Standards Council. Registered office at 8 Surrey Street, Norwich NR1 3NG. For our joint protection, calls may be recorded or monitored. *Please refer to Payment Protection policy booklet for full details of the benefits and exclusions. **Excesses apply. Please refer to Summary of Cover for details. Maximum 5 vehicles. Not available in conjunction with any other promotion.



features and colours

The ford**fusion**'s strong road presence helps you to enjoy the hustle and bustle of urban life. From potholes to tram lines, its robust suspension and superior ground clearance soak up hazards with ease. Car parks hold no fear either thanks to tough bumpers and bodyside mouldings that defend its paintwork against life's knocks and scrapes. Inside the bright and roomy interior, the ford**fusion** invites you to sample a range of features thoughtfully included to enhance your journey. Should you wish to add more, our specially selected range of options and accessories will allow you to make your ford**fusion** a little more exclusive.

Standard and optional wheels



15" steel
with wheelcover (Fusion 1)

15" steel
with wheelcover (Fusion 2)

15" 7x2-spoke alloy
(Fusion 3)

15" 5x2-spoke alloy
(optional on Fusion 1/Fusion 2)

15" 9-spoke alloy
(accessories range)

Wheels

	Fusion 1	Fusion 2	Fusion 3
Wheels			
6x15" steel (15" 'temporary' steel spare* with 125/80 R15 Low Rolling Resistance (LRR) tyre) with full wheelcovers and 195/60 R15 Low Rolling Resistance (LRR) tyres	●	●	
6x15" 5x2-spoke alloy wheels (15" 'temporary' steel spare* with 125/80 R15 Low Rolling Resistance (LRR) tyre) and 195/60 R15 Low Rolling Resistance (LRR) tyres	○	○	
6x15" 7x2-spoke alloy wheels (15" 'temporary' steel spare* with 125/80 R15 Low Rolling Resistance (LRR) tyre) and 195/60 R15 Low Rolling Resistance (LRR) tyres			●

* Note: If the spare wheel rim or tyre size differs from the other wheels fitted: DO NOT drive in excess of 80 km/h. DO drive the least possible distance

● Standard, ○ Option at extra cost

Choose from a collection of fresh, high-gloss paint finishes, superior interior trim materials and a range of stylish road wheels.

Personalise your fordfusion** with**

29 **Wheels** 30 **Exterior features** 31 **Interior features** 34 **Trim and body colours**

Exterior features

	Fusion1	Fusion2	Fusion3
Exterior Appearance and Styling			
Bodyside mouldings	●	●	●
Bumpers – Body colour	●	●	●
Paint – Metallic	○	○	○
Radiator grille – Black mesh upper and slatted lower front grille	●	●	
Radiator grille – Black mesh upper with chrome surround and slatted lower front grille			●
Tailgate lift handle	●	●	●
Exterior Functional			
Door mirrors – Manual internal control, black housings	●		
Door mirrors – Electrically-operated and heated, black housings		●	●
Heated rear window	●	●	●
“Quickclear” heated windscreen		●	●
Tailgate release – Remote	●	●	●
Tinted glass	●	●	●
Heated rear window	●	●	●
Wipers – Front, 2-speed, with programmable interval intermittent wipe and electric wash	●	●	●
Wipers – Front, delayed 'anti-dribble' wipe after wash/wipe function	●	●	●
Wipers – Tailgate wiper with electric wash	●	●	●
Wipers – Tailgate, reverse gear activation (when front wipers are in use)	●	●	●
Exterior Lighting			
Halogen headlights, side lights, rear fog light, reversing light, high-mounted rear brake light	●	●	●
Fog lights – Front			●
Headlight levelling	●	●	●

● Standard, ○ Option at extra cost

Interior features

	Fusion 1	Fusion 2	Fusion 3
Carpet and Trim			
Carpet – Non-woven velour	●	●	●
Door trim – Fabric insert, moulded panel with pull handle/armrest, front door bins and integrated speaker grilles	●	●	●
Gear lever gaiter – Black	●	●	
Gear lever gaiter – Black with satin aluminium gaiter surround			●
Gear knob – Black with acrylic insert	●	●	
Gear knob – Black leather-covered with satin aluminium insert			●
Interior Lighting			
Courtesy lights – Header-mounted, front door-operated (all door- and tailgate-operated on central locking models)	●	●	●
Courtesy lights – 'Theatre-style' dimming		●	●
Map reading lights			●
Luggage compartment light	●	●	●
Instruments and Controls			
Instruments – Speedometer, electronic digital engine temperature and fuel level gauges, tachometer and trip recorder	●	●	●
Warning indicators for oil pressure, direction indicators, glow plugs (diesel only), high beam, ignition/alternator, brake failure, handbrake on, airbags, low fuel level, 'lights on' audible warning	●	●	●
Illuminated heater controls – 4-speed fan. Four vents with temperature and direction control	●	●	●
Control stalks – Column-mounted for master lights, indicators and wash/wipe functions	●	●	●
Battery saver	●	●	●
Steering wheel – 3-spoke, leather-wrapped incorporating horn function	●	●	●
Seats and Seat Belts			
Front seat – Driver's seat manual height adjustment	●	●	●
Front seat – Passenger's seat fold-flat function with integrated work surface/tray		●	●
Front seats – Anti-submarining, fully reclining with height-adjustable head restraints	●	●	●
Front seats – Fold forward seat backs	●	●	●
Storage bin – Passenger's seat, beneath flip-up cushion	●	●	●
Storage pockets – Driver's and front passenger's seat back, vinyl	●		
Storage pocket – Driver's seat back, fabric	●	●	
Rear seat – 60:40 split/folding back and cushion	●	●	●
Rear seats – 3 head restraints	●	●	●
Comfort and Convenience			
Accessory socket	●	●	●
Air conditioning – CFC-free with air recirculation	○	●	●
Centre console – Long with cup holder	●	●	●
Clock – Digital, 12- or 24-hour function	●	●	●
Grab handles – Two, rear with coat hooks	●	●	●
Glovebox with lid (incorporating pen and ticket holders)	●	●	●
Mirror – Dipping rear-view	●	●	●
Sunroof – Tilting/sliding, screened glass	○		
Sunvisor – Driver's with covered mirror and ticket strap	●	●	●
Sunvisor – Passenger's with covered mirror	●	●	●
Windows – Front, electrically-operated		●	●
Luggage Compartment			
Carpet – Floor with sidewall and wheel arch trims	●	●	●
Luggage compartment net			●
Rear parcel tray – Carpet-covered	●	●	●

● Standard, ○ Option at extra cost



Audio and communication systems



3500 stereo radio/cassette For superb audio reproduction and outstanding style, look no further than the Fusion's new-generation, fully integrated 3500 stereo radio/cassette.



6006 stereo radio/CD With its 6-disc in-dash CD autochanger, the new premium 6006 stereo radio/CD promises hours of unbroken, crystal-clear sound performance. Available as an option at extra cost.



Satellite navigation Combining a radio, CD player and guidance system, the optional Travel Pilot navigation system will suggest the best route to your destination and guide you with a friendly voice and visual directions. Available on selected models as an option at extra cost.

Audio and communication systems

	Fusion 1	Fusion 2	Fusion 3
Audio			
Stereo radio/cassette – Model 3500 RDS EON, 'Keycode' anti-theft coding, 24 presets, autoreverse, 4 x 6 watts (RMS), 4 speakers	●		
Stereo radio/CD – Model 4500 RDS EON, 'Keycode' anti-theft coding, 24 presets, 4 x 6 watts (RMS), 4 speakers		●	
Stereo radio/CD – Model 4500 RDS EON, with remote controls, 'Keycode' anti-theft coding, 24 presets, 4 x 6 watts (RMS), 4 speakers	○		●
Stereo radio/CD – Model 6006 RDS EON, with remote controls, 6-disc in-dash CD autochanger, 'Keycode' anti-theft coding, 36 presets, programme type (PTY), shuffle, 4 x 20 watts (RMS), 4 speakers	○	○	○
Travel Pilot Satellite Navigation			○

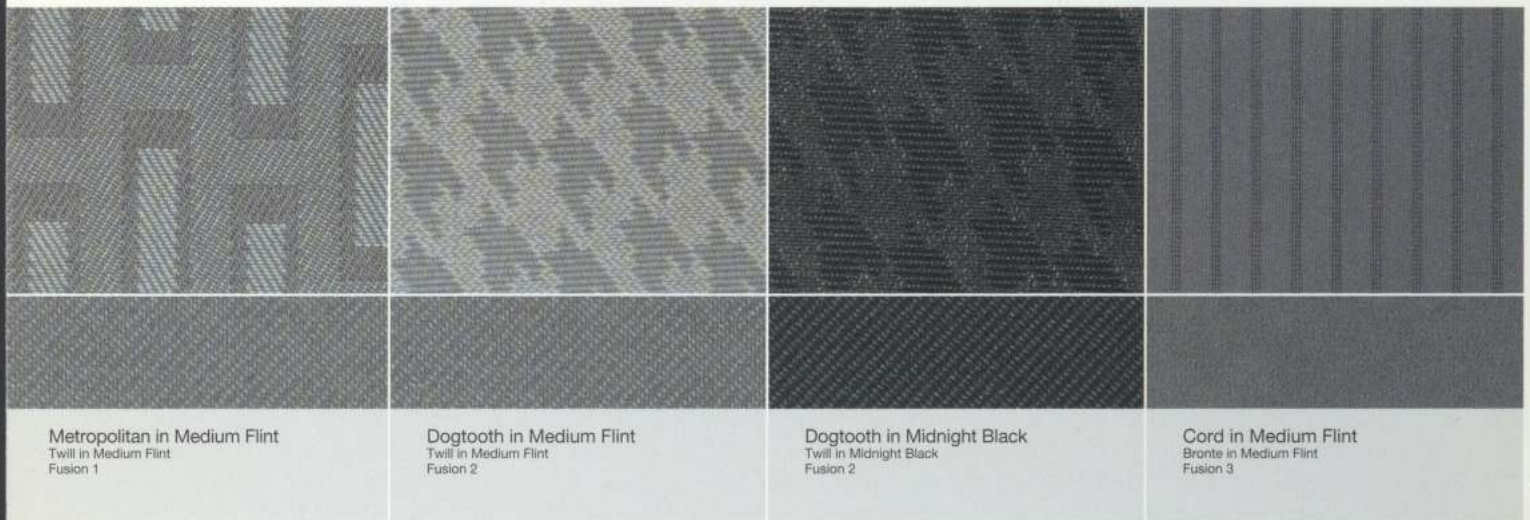
● Standard, ○ Option at extra cost

Option packs

	Fusion 1	Fusion 2	Fusion 3
Option Packs			
Reflex Pack – Side thorax airbags and side air-curtain airbags*	○	○	○
Parking Distance Sensor	○	○	○
Airbag - Front Passenger's airbag de-activation switch (Dealer-fitted option)	○	○	○
Smokers Pack (Dealer-fitted option)	○	○	○

* Note: A rear-facing child seat should never be placed in the front passenger's seat when the Ford vehicle is equipped with a front passenger's or side airbags.
○ Option at extra cost

Trim colours



Colour and trim

Model	Fusion 1	Fusion 2	Fusion 3
Interior Colour	Medium Dark Flint	Medium Dark Flint	Medium Dark Flint
Seat Fabric	Metropolitan/Twill	Dogtooth/Twill	Cord/Bronte
Solid Body Colours			
Colorado Red	MF	MB/MF	MF
Dark True Blue	MF	MB/MF	MF
Metallic Body Colours*			
Vitro	MF	MB/MF	MF
Oyster Silver	MF	MB/MF	MF
Magnum Grey	MF	MB/MF	MF
Moondust Silver	MF	MB/MF	MF
Panther Black	MF	MB/MF	MF
Neptune Green	MF	MB/MF	MF
Pepper Red	MF	MB/MF	MF
Ink Blue	MF	MB/MF	MF

Seat fabric colour key: MB – Midnight Black, MF – Medium Flint. * Metallic paint is an option at extra cost.

Body colours



Note: The car images used are to illustrate body colours only and may not reflect current specification. Colours and trims reproduced within this brochure may vary from the actual colours, due to the limitations of the printing processes used.

*Metallic body colours are available at extra cost.



BY APPOINTMENT TO
HER MAJESTY THE QUEEN
MOTOR VEHICLE MANUFACTURERS
FORD MOTOR COMPANY LIMITED
BRENTWOOD ESSEX



BY APPOINTMENT TO
HIS MAJESTY THE DUKE OF NORTHUMBERLAND
MOTOR VEHICLE MANUFACTURERS
FORD MOTOR COMPANY LIMITED
BRENTWOOD ESSEX



BY APPOINTMENT TO
HIS MAJESTY THE PRINCE OF WALES
MOTOR VEHICLE MANUFACTURERS
FORD MOTOR COMPANY LIMITED
BRENTWOOD ESSEX

Dealer

Published by Ford Motor Company Limited,
Brentwood, Essex, England.
Registered in England No. 235446.

FA 1430
BJN 17355.
PN 279515/0206/121m/GB
June 2002.

© Ford Motor Company Limited.

www.ford.co.uk

The Government fuel figures do not express or imply any guarantee of the fuel consumption of any particular car. The cars themselves have not been tested and there are inevitably differences between individual cars of the same model. In addition, a car may incorporate particular modifications. Furthermore, the driver's style and road and traffic conditions, as well as the extent to which the car has been driven and the standard of maintenance, will affect its fuel consumption. **Insurance groups** are only as recommended by the Association of British Insurers. You should always consult your insurance adviser for confirmation. **Illustrations, descriptions and specifications.** This catalogue was correct at the time of going to print. However, Ford policy is one of continuous product development. The right is reserved to change specifications, colours and prices of the models and items illustrated and described in this publication at any time. For the latest details always consult your Ford Dealer. **Optional equipment.** Throughout this publication, wherever a feature is described as being an 'Option' or 'Optional Fitment/Pack', etc., you should assume that it will be at extra cost to the base vehicle, unless specifically stated to the contrary. All models and colour combinations are subject to availability.

designed for living. engineered to last

