

ford**maverick**

**FILE COPY - DO NOT
REMOVE**

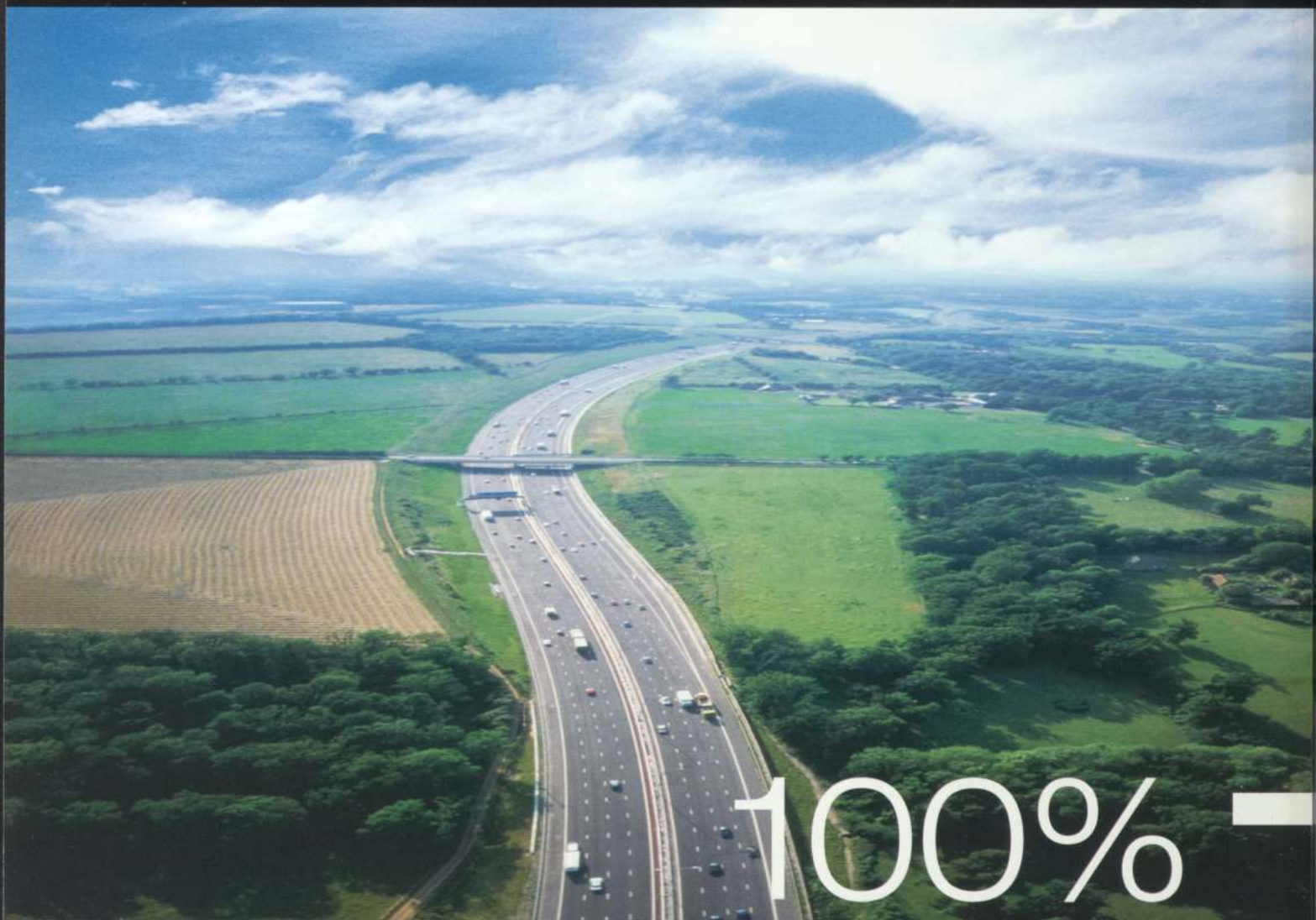




ford 4x4 range

There are places you dream of going to.
Tracks you long to explore. And people
you want to take with you. Whatever the
size of your dream, there is now a Ford
4x4 to help turn it into reality.

The Ford 4x4 range.
Fully prepared for your next adventure.



100%

on-road

total balance



100%

off-road

Imagine a journey stretching over 300 miles of tarmac, followed by a challenging three miles of mud, snow and water. What vehicle would you choose? A road car with a modicum of off-road ability? An off-roader with limited road-going potential? Neither would give you such a totally rewarding and assured drive as the new Ford Maverick.

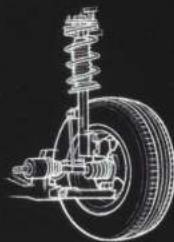
This new, compact Ford 4x4 is equally adept on and off the road. Totally balanced. One hundred per cent a road car, it has outstanding driving quality. Yet, its one-hundred-per-cent off-road ability places it up there, with the best in its class. Put simply, it makes remote country as accessible as the open road.

The new Ford Maverick. One-hundred-per-cent able to get you to where you want to go.



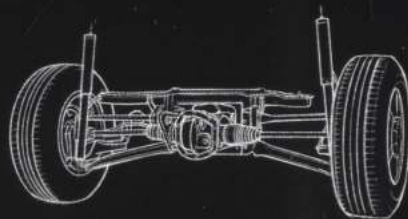
ABS

Electronically-controlled four-channel anti-lock braking system (ABS) has active wheel speed sensors for more sensitive wheel lock anticipation



front suspension

The front suspension uses MacPherson struts and separately-mounted springs for smooth, precise handling



IRS

The independent rear suspension has a semi-trailing arm with lateral links and coil springs for a car-like drive

2.1

complete off-road capability
and on-road presence





unibody design

The rigid unibody structure forms the ideal base for the independent rear suspension



control-trac II™

Control-Trac II™ four-wheel drive system features a four-wheel drive lock-up feature for added functionality



4x4 system

The 4x4 system is driver-friendly, requiring no intervention from the driver when set in automatic 4x4 mode

The new Ford Maverick has an all-new, rigid unibody construction and is engineered with a low centre of gravity and independent multi-link rear suspension. Its surefooted Control-Trac II™ 4x4 system constantly monitors the road conditions, which means the vehicle feels precise and at ease at all times.



A true off-roader, the new Ford Maverick powers you confidently through mud, snow or whatever else nature throws its way. For such extreme conditions, Ford's Control-Trac II™ 4x4 system can be locked, splitting power equally between the front and rear wheels. This, together with excellent wading ability and approach and departure angles, makes the new Ford Maverick a capable off-road performer.

total dependability

dependable in all driving situations



**veterinary
surgeon**

the highlands
scotland

"The roads are pretty empty here and mostly a joy to drive, but they can be challenging in bad weather. Being a vet, people depend on me, and I depend on my vehicle to get me to them. I have to visit some remote farms, sometimes quickly, and I must arrive composed. But it's not all work here. There's some really wild coastline and in our time off, we're getting to know it very well."



You can depend on the new Ford Maverick to get you to where you want to go. And always deliver an eager, agile performance.

On the road, the new Ford Maverick is car-like. But not just any car – an advanced and refined one. The all-new unibody construction, light but robust, creates a strong platform for the independent multi-link rear suspension and front suspension, which utilises MacPherson struts. This level of engineering, also found in the latest Ford cars, is a key reason for that rewarding on-road feel.

In automatic 4x4 mode, up to 50% of the power is seamlessly proportioned to the rear wheels if the front wheels begin to lose grip.

engine

The 3.0-litre Duratec V6 engine has optimised low-end torque and overall useable horsepower for a great driving experience on or off the road

rear suspension

Independent rear suspension, precise steering and wide stance contribute to the confident, sporty handling characteristics

ground clearance



maverick in action ►►

www.ford.co.uk



And when you venture off-road, or if the tarmac has disappeared, switch to '4x4 Lock'. Ford's unique Control-Trac II™ 4x4 lockup feature, designed for the most challenging surfaces, splits torque 50/50 between front and rear wheels. Whilst driving, you will feel the immediate grip and the power smoothly engage to all four wheels as it keeps you steadily on track.

You can depend on this driving quality wherever you go. With its great wading ability, you can take the new Ford Maverick right off the beaten path. Ground clearance in the 2.0-litre model is 196 mm, and in the 3.0-litre model it is 214 mm. Angles of approach and departure are similarly generous: 28.0° and 29.8° for the 2.0-litre model, and 30.1° and 31.8° for the 3.0-litre model. If you are in a remote place, it's especially reassuring to know that a battery saver is activated if the interior lights are accidentally left on.

With all these features working for you, you can confidently drive where you want, and, what's more, enjoy the experience.

Smooth performance whatever the terrain. Pulling power whatever the load. Controlled responses whatever the conditions. In short, engine capability you can rely on totally. This is what we set out to achieve with the new Ford Maverick's engine range.

The standard 2.0-litre I-4 Zetec engine comes with the G5M five-speed manual transmission. Its flexible 124 horsepower and 175 Nm of torque are achieved with a high degree of fuel efficiency*.

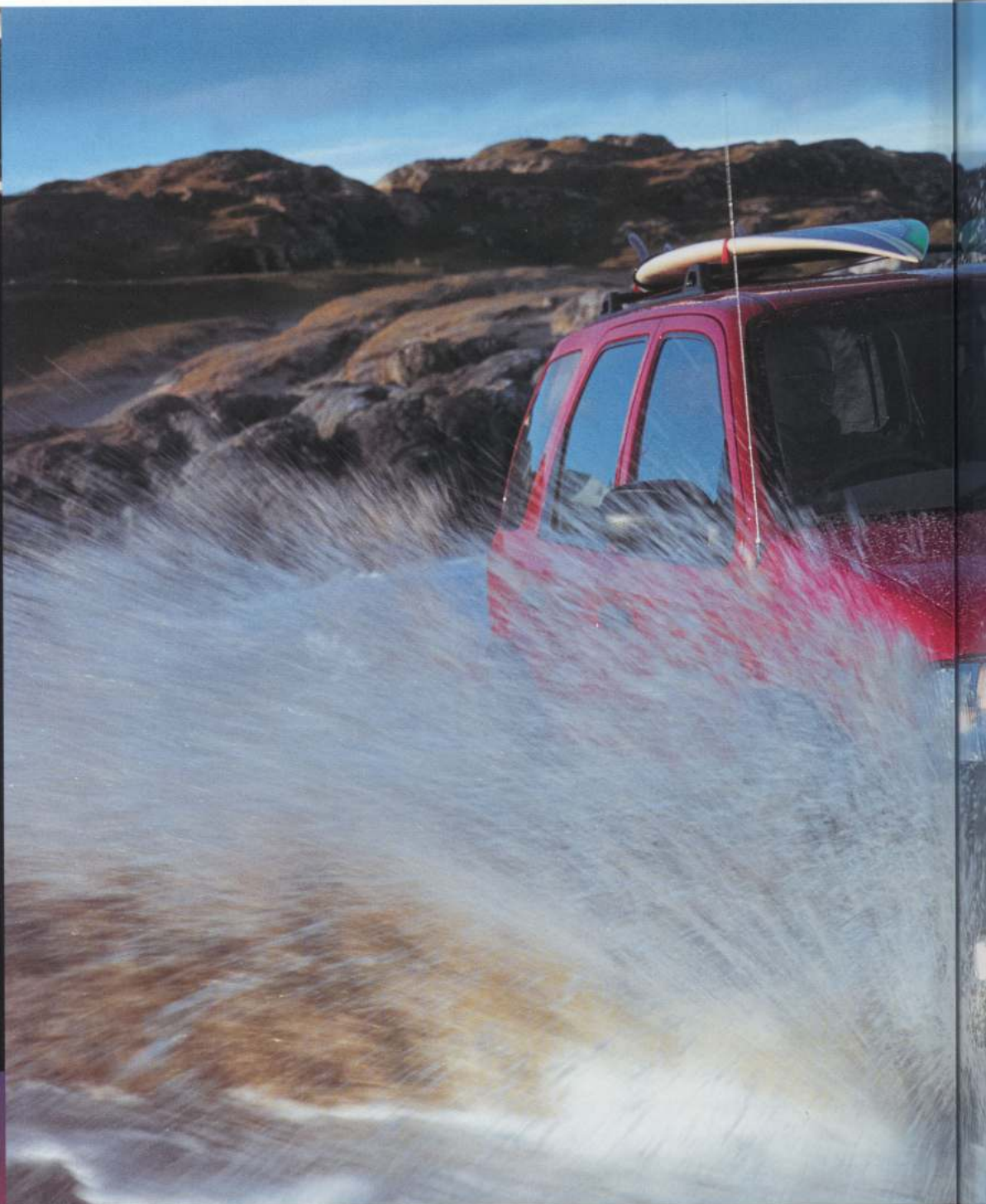
*For fuel economy figures, please refer to page 20



surfer

cornwall
england

"Always trying to catch that perfect wave. That sums me up. I'll drive anywhere, any distance, rain or shine, for a day's surfing. I just get in the car and go. I need that sense of freedom after long hours in the restaurant kitchen. The fun begins for me as soon as I load up my surfboard and get in the driving seat."



V6 power

The powerful 3.0-litre Duratec V6 engine has a towing capacity of up to 1700 kg

wading depth



maverick in action



www.ford.co.uk

total capability

true off-road expertise combined with road presence



For even more power, low-end torque and a 1700 kg towing capacity, choose the 3.0-litre Duratec V6 engine with a CD4E four-speed automatic transmission with electronic overdrive. This muscular V6 engine, one of the highest-powered in its class, delivers 197 horsepower and a mighty 265 Nm of torque.

Equally able on and off the road, you can trust these engines to perform wherever you venture.

total comfort

the perfect balance of versatility and functionality



The new Ford Maverick's 1.83 cubic metres of comfortable interior space opens up so many possibilities. There's ample room for five adults and all their gear. There's functional versatility for a variety of active pursuits, too: for more loadspace, the cargo area can be near-doubled with the rear seats folded flat, and therefore can take both tall and wide loads. And there is an easy-to-reach rear tailgate with separate lift-up glass.

With its comfortable yet highly practical space, the new Ford Maverick has an ideal interior environment, whatever the environment is like outside.



*Separate lift-up glass
in rear tailgate*



Sunglasses holder



*12-volt auxiliary power point,
located in the cargo area*

Whether your journey is on tarmac or rougher terrain, drive the new Ford Maverick and one thing is constant. And that is the sense of being totally in control. Every detail of the driver-friendly interior enhances your concentration and confidence.



The commanding driving position gives you a clear view of the way ahead. It is easy to stay focused on it, because the intuitive simplicity of the instrument layout means you don't have to keep glancing down at the controls. And the longer your journey, the more you'll appreciate the ergonomics of the supportive seating and tilt steering wheel.

Without any driver intervention, automatic 4x4 mode gives full power to the front wheels, proportioning more power to the rear if needed. For harsher conditions, simply push a button to select '4x4 Lock' for a locked 50/50 torque split between front and rear. If conditions change, just deselect it while driving.

total control

the balance of comfort and functionality



accountant

black forest
germany

"Dealing with figures all day makes big demands on my powers of concentration. My office is right in the city centre, so it's great to be able to comfortably see above the traffic when I'm driving. After a working week, taking the family canoeing is a wonderful release."

approach/ramp breakover/
departure angle



maverick in action



www.ford.co.uk

However you drive, the steering is reassuringly responsive, thanks to the independent rear suspension, which helps to produce car-like handling precision on all terrain.

By being totally at ease when you're driving, it is easy to feel totally in control.

climbing angle



maverick in action



www.ford.co.uk



In the search for enjoyment, you can end up in some remote and challenging places. Even routine road journeys can turn unpredictable. That's why the new Ford Maverick is equipped to the limit to protect you.

Its 4x4 exterior looks, and is, very rugged. The innovative unibody construction features a strong body shell with side-intrusion door beams and an integral wheel arch reinforcement unit that directs crash energy from the front, spreading it over a larger area to help minimise its effect.

Inside, you'll find standard dual front airbags and side airbags*, and Ford's passive electronic anti-theft system (PATS), so both you and your vehicle are extremely well protected, for total peace of mind.

total protection

with exceptional levels of safety



librarian

zurich
switzerland

"My friends say I'm mad, but they also admire me. I took up skiing a few years ago and just went for it. But as the slopes I tackle get more and more challenging, my sense of self-preservation gets more acute. I wouldn't drive to any ski contest unless I felt my vehicle could cope with the extreme driving conditions you encounter up here. After all, I am a librarian at heart."



dual front airbags

Driver and front passenger* second-generation airbags are standard on all models

side impact airbags

Seat-mounted side impact airbags move with the seat to provide protection, regardless of seat position

*Note: a rear-facing child seat should never be placed in the front passenger seat when the Ford vehicle is equipped with a front passenger's or side airbags

kindred

2.0L



The new Ford Maverick 2.0-litre model has everything you need for a genuine 4x4 experience. Its 2.0-litre I-4 Zetec engine delivers versatile on- and off-road power with a high level of fuel economy. Ford's Control-Trac II™ four-wheel drive system and anti-lock braking are standard.

With roof bars, rear auxiliary power point in the cargo area and fold-flat rear seats, you can easily organise any journey, while luxury features like solar tint windows and air conditioning have both a functional and feel-good purpose.

2.0L features

- Split rear seat
- Passive electronic anti-theft system
- Tilt steering column
- 5000N radio/cassette
- Locking glove box
- Roof rack with crossbars
- Solar tint windows
- Sunroof
- Rear floor heat ducts
- Front and rear row grab handles
- Variable-speed/intermittent windscreen wipers
- Two-speed rear wiper/washer system
- White face instrumentation with tachometer
- Front door map pockets
- Rear cargo area storage
- Heated rear screen
- Six cargo hooks
- Removable rear seat cushion
- Fold-flat rear seats
- Cargo area rear auxiliary power point
- Body side cladding
- Floor console with map storage
- Five cup holders
- Ash tray
- Separate opening glass in rear tailgate
- Fog lights front and rear



spirits

3.0L



If you're after enhanced do-anything, go-anywhere off-road ability, choose the new Ford Maverick 3.0-litre model.

Its powerful 3.0-litre Duratec V6 engine and optional Trailer Tow kit boosts its towing capacity to a maximum 1700 kg.

The leather interior trim adds a touch of luxury, while the high-performance radio/CD system enables you to put a great soundtrack to every journey.



Features over the 2.0L

- Cruise control*
- Leather trim and steering wheel*
- Centre lidded armrest with stowage area underneath*
- 16" 5-spoke aluminium wheels*
- 6006 6-disc in-dash mounted CD autochanger*

total expression



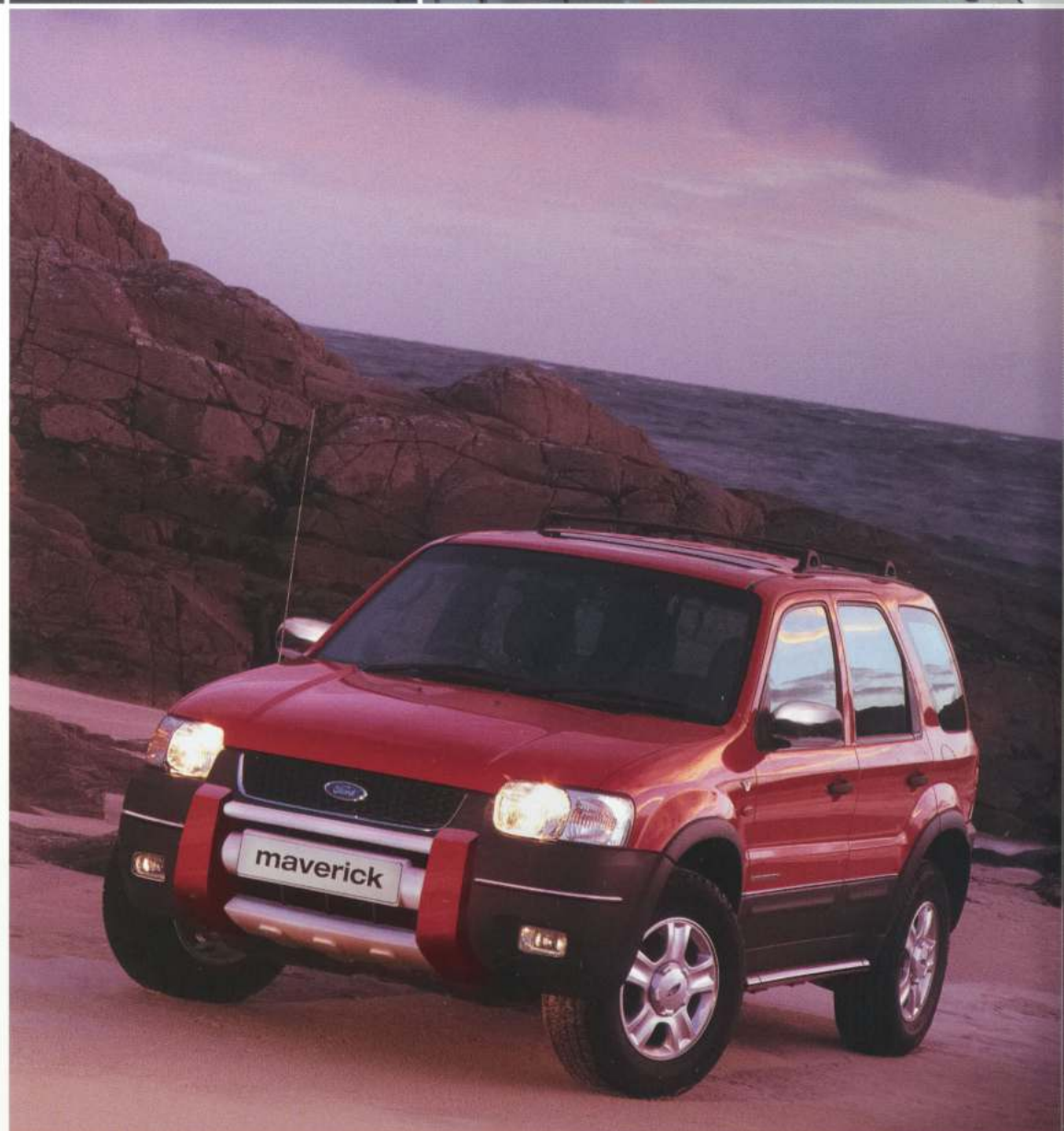
1. Dog guard/load compartment partition
2. Front bumper skid plate application
3. Chromed door handle plate
4. Headlight frame
5. Rear roof spoiler

With its large range of accessories and towing capacity, the new Ford Maverick can be equipped for all your adventures. From paint pots to pets, it can transport all the things that make the most active lifestyle complete.

The new Ford Maverick. It has what it takes to totally fit your needs.

For more information on the full range of products available to enhance your vehicle, please speak to your Ford Dealer

Vehicle shown features optional equipment





the right atmosphere

audio systems: sounds beautiful

It's quite true. You feel better about even the longest journeys when you're accompanied by your favourite music.

Plus, news and traffic reports keep you connected with the world outside. Our fully integrated audio systems, which incorporate the Radio Data System (RDS), automatically cut in to whatever you're listening to, keeping you up-to-date with essential traffic news.

extra security

All systems feature an easily detachable front bezel that can be slipped into a pocket or handbag to deter theft. Moreover, all systems (except the 1000 and 2000N) feature an anti-theft code 'Keycode', whilst for further peace of mind, RDS/EON audio systems also allow the registration of a vehicle identification number into memory.



Model 6006 RDS/EON radio/multi-CD player

- Four-channel radio/Multi-CD player with a 4 x 15 watts (RMS)/ 4 x 42 watts maxi power output.
- Multi-CD autochanger (6 discs) integrated into the radio.
- AM/FM radio. Stores 24 presets for AM/FM stations.
- Electronic search facilities.
- Station name display.
- Programme Type (PTY) button.



Model 5000 RDS/EON radio/cassette player

- Four-channel radio/cassette player with a 4 x 15 watts (RMS)/ 4 x 42 watts maxi power output.
- AM/FM radio. Stores 24 presets for AM/FM stations.
- Electronic search facilities.
- Station name display.
- Programme Type (PTY) button.
- Dolby noise reduction for tape cassette deck, plus auto reverse and music search.

climate control

Most people associate air conditioning with hot weather, however, it is of benefit all year round. The system also extracts excess moisture from the air, which helps prevent windows misting up in cool weather. Improved visibility contributes to safety as well as comfort. The MicronAir filter progressively filters out the tiniest particles of pollen and dust, providing cleaner air. The air recirculation facility also prevents fumes and road dirt entering the car.



Ford Maverick manual air conditioning

A wide range of optional and accessory products is available across the whole Ford range.

maverick specifications



model availability weights and loads

	Kerbweight (kg) [†]	Gross Vehicle Mass (GVM) (kg)	Max. towing limit at GVM (kg)	Payload (kg) ^{††}	Max. roof rack load (kg) ^{††}
5-door Maverick					
2.0L Zetec 16V 5-speed manual 4x4	1540	1965	1500	425	45.4
3.0L Duratec V6 4-speed auto 4x4	1635	2065	1700	430	45.4

[†] Represents the kerbweight, including coolant, oils, fuel, tools, spare wheel and a 75 kg allowance for the driver, subject to manufacturing tolerances, etc.

^{††} Payload = Gross Vehicle Mass less kerbweight.

Note: Automatic transmission is column-mounted shift.

engine data

	Engine technical features	Maximum power [®]	Maximum torque [®]
2.0 Zetec 16V 1988 cc	Cylinders – 4 in-line ■ Electronic fuel injection with EEC V engine management system ■ Electronic breakerless ignition	91 kW (124 PS) at 5300 min ⁻¹ (rpm)	175 Nm at 4500 min ⁻¹ (rpm)
3.0 Duratec V6 2967 cc	Cylinders – V6 ■ Electronic fuel injection with EEC V engine management system ■ Electronic breakerless ignition	145 kW (197 PS) at 6000 min ⁻¹ (rpm)	265 Nm at 4750 min ⁻¹ (rpm)

[®] Tested in accordance with ISO 1585.

fuel and performance

	CO ₂ emissions (g/km) [†]	Fuel consumption in L/100km (mpg) [†]			Performance (Ford test figures)		
		Urban	Extra Urban*	Combined	Max. speed mph	0-62 mph (secs)	19-43 mph (secs)
5-door Maverick							
2.0L Zetec 5-speed manual 4x4	234	13.1 (21.6)	7.9 (35.8)	9.8 (28.8)	103	12.0	4.6
3.0L Duratec V6 4-speed auto 4x4	305	18.9 (14.9)	9.3 (30.4)	12.8 (22.1)	112	10.2	3.6

* Non Urban environment.

[†] All CO₂ emissions figures in g/km and fuel consumption figures in L/100 km are from officially approved tests under the Passenger Car Fuel Consumption Order 1983 and in accordance with EEC Directive 93/116/EC.

The Government CO₂ emissions and fuel consumption test figures shown in the chart do not express or imply any guarantee of the emissions or fuel consumption of a car of the class in question (see back cover). All the figures are based on tests conducted on vehicles with standard wheels and tyres; optional or accessory wheels and tyres may have an effect on the emissions and fuel consumption of a vehicle.

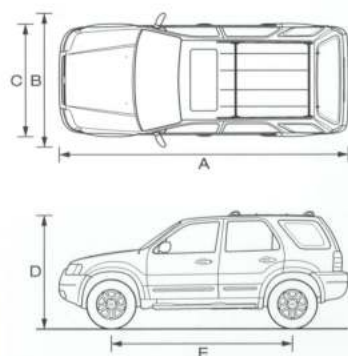
Note:

Urban: An engine started from cold in laboratory conditions operated at varying speeds, maximum 50 km/h, average 19 km/h over a theoretical distance of 4 km.

Extra Urban: Conducted immediately after the urban cycle, it consists of half steady speed driving and half varying speed driving, maximum 127 km/h over a distance of 7 km.

Combined: This is an average of the two parts of the test, weighted by the distances covered in each part.

dimensions



5-door	
Exterior (mm)	
A Overall length	4395
B Overall width with mirrors	2018
C Overall width without mirrors	1825
D Overall height with roof rails (2.0L/3.0L)	1755/1774
E Wheelbase	2620
Tread (front)	1550
Tread (rear)	1530
Interior (mm)	
Front	
Effective headroom	1026
Maximum effective leg room	1067
Shoulder room	1430
Hip room	1356
Rear	
Effective headroom	995
Maximum effective leg room	925
Shoulder room	1420
Hip room	1244

5-door	
Luggage Area	
Cargo width at wheelhouse	1032
Maximum cargo height	991
Maximum cargo width	1335
Maximum cargo length (5/2 seats/rear seats out)	912/1500/ 1698
Cargo floor to ground	644
Stowage Luggage cu m[†]	
5-seat mode (laden to window)	0.49
2-seat mode (laden to roof)	1.83

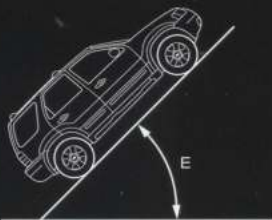
[†] Measured using the VDA method.

Dimensions may vary dependent on the model and equipment fitted.

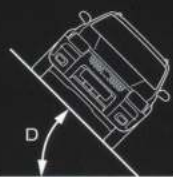
ground clearance



climbing angle



tilt angle



gear ratios

	2.0L Zetec	3.0L Duratec
1st	3.666	2.889
2nd	2.059	1.571
3rd	1.310	1.000
4th - OD	1.030	0.698
5th	0.837	0.837
Reverse	3.454	2.310

These ratios apply to automatic 4x4 and 4x4 Lock modes on the Control-Trac II 4x4 system.

mechanical features

	XLT
Brakes	
Front discs, rear drums	-
Anti-lock brakes with electronic brake-force distribution (EBD)	-
Fuel Tank	
61.0 litres	-
Steering	
Power-assisted rack-and-pinion	-
Steering column - Tilt-adjustable	-
Suspension and Body	
Front - Independent, with MacPherson struts and anti-roll bar	-
Rear - Independent, with double lateral link and trailing arms	-
Side-impact door beams and energy-absorbing steering column, knee bolsters	-
Control-Trac II 4x4 system	-

exterior features

	XLT
Exterior Appearance and Styling	
Bodyside mouldings - Medium Dark Platinum (including lower doors)	-
Bumpers - Medium Dark Platinum front and rear, with rear step	-
Front grille - Chrome surround with black mesh centre	-
Wheels - 6 1/2x15 5-spoke cast aluminium with P225/70R15 BSW All-Season tyres	-
Exterior Functional	
Alarm - Perimeter	-
Door mirrors - Electrically-operated with manual folding, black housings	-
Fuel filler cap - Remote release	-
Heated rear window	-
Immobiliser - Anti-theft system	-
Locks - Remote central/double locking with illuminated entry	-
Locks - Remote keyless entry system with two-step unlocking system and accessory delay function	-
Locks - Childproof rear door	-
Roof rails with crossbars	-
Solar tinted glass (front windscreen)	-
Tailgate - One-piece, top-hinged with flip-open window	-
Wipers - Front, with variable intermittent wipe	-
Wipers - Tailgate wiper, with two-speed wipe	-
Exterior Lighting	
Halogen headlights, side lights, Tri-colour rear lights, reversing lights, rear fog lights, high-mounted rear brake light	-
Fog lights - Front	-

interior features

	XLT
Audio	
Stereo radio/cassette - Model 5000N RDS with clock, removable control panel, 'Keycode' anti-theft coding and 4 speakers	-
Carpet and Trim	
Door trim - Vinyl covered with storage pockets in front doors	-
Floor mats - Colour-keyed, front and rear	-
Interior Lighting	
Courtesy light - Dome light with reading lights	-
Luggage compartment light	-

manoeuvrability

	2.0L Zetec	3.0L Duratec
5-door Maverick		
Axle clearance (laden) - mm	160.2	160.2
A Angle of approach	28.0°	30.1°
B Angle of departure	29.8°	31.8°
C Ramp breakover angle	136.4°	135.4°
D Tilt angle	47°	47°
E Maximum climbing angle	45°	45°
F Maximum ground clearance (mm)	196	214
Wading depth at 6 mph (mm)	600	600
Rear cargo door required opening distance (mm)	500	500
Turning circle - kerb to kerb (m) (P225/70 tyres)	10.8	-
Turning circle - kerb to kerb (m) (P235/70 tyres)	-	11.2

insurance groups

	XLT
5-door Maverick	
2.0L Zetec 16V 4x4	9E
3.0L Duratec V6 4x4	12A

A = Meets security requirement but group rating not affected.

E = Exceeds security requirement for model concerned and group rating has been reduced.

4x4 operation

The all-new Ford Maverick is equipped with Ford's intelligent Control-Trac II™ four-wheel drive system. It has been designed specifically for the new Ford Maverick's transverse engine configuration.

The system features a push-button on the instrument panel that allows the driver to go from automatic 4x4 to '4x4 Lock' mode.

Automatic 4x4 is designed for normal on-road driving conditions, such as dry or wet road surfaces, snow and gravel. It provides four-wheel drive with full power to the front wheels, but will direct power to the rear wheels as conditions demand, to maintain traction at all times.



'4x4 Lock' can be engaged for severe driving conditions, such as deep snow and ice (where no road surface remains uncovered), sand or mud. In this mode, the system provides four-wheel drive with a constant 50/50 power split between the front and rear wheels.

'4x4 Lock' may be selected or deselected on the move. When deselected, the Control-Trac II™ four-wheel drive system reverts to automatic 4x4.



interior features (continued)

XLT

Instruments and Controls	
Instruments – Speedometer, trip recorder, fuel gauge, water temperature gauge and tachometer	•
Warning indicators for low fuel, oil pressure, direction indicators, high beam, ignition/alternator, brake failure, handbrake on, airbags, 'lights on', driver's seat belt reminder and door open audible warnings	•
Airbags – Driver's and front passenger's*	•
Airbags – Front side-impact*	•
Cruise control	○
Steering wheel – Leather-wrapped	○
Seats and Seat Belts	
Front seats – Low-back buckets with driver's manual height adjust and lumbar support, height-adjustable head restraints	•
Rear seat – 60/40 split back bench	•
Rear seat – Two, height-adjustable head restraints	•
Seats – Leather bucket seats with driver's manual height adjust	○
Seat belts – Front, inertia reel with pre-tensioners and height-adjustable mounts	•
Seat belts – Rear, two inertia reel and one centre lap static	•
Comfort and Convenience	
Air conditioning – CFC-free	•
Centre console – Floor-mounted with cup holders, storage bin, coin holder and ashtray	•
Cigar lighter	•
Coat hooks – Two, colour-keyed	•
Glovebox – Locking	•
Grab handles – Six, with four in front	•
Mirror – Rear-view (day/night)	•
Powerpoint – Front, 12-volt	•
Powerpoint – Rear, located in luggage compartment	•
Sunglasses holder – Flip-down storage mounted in roof	•
Sunroof – Electrically-operated with shade	•
Sunvisors – Two, fabric with dual covered mirrors	•
Windows – Electrically-operated, with one-touch lowering on driver's side	•
Luggage Compartment	
Tie-down hooks – Four	•
Tonneau cover – Retractable	•
Option Pack	
Luxury Pack – Cruise control, leather-wrapped steering wheel and leather bucket seats with driver's manual height adjust	○
3.0L Standard Features (additional to 2.0L)	
Wheels – 7x16 5-spoke aluminium with P235/70Rx16 BSW All-Season tyres	•
Centre console – Floor-mounted with cup holders, storage bin, coin holder and lidded armrest with stowage area underneath	•
Stereo radio/CD – Model 6006 RDS EON 6-disc, in-dash mounted CD autochanger, removable control panel, 'Keycode' anti-theft coding and 4 speakers	•
Cruise control	•
Steering wheel – Leather-wrapped	•
Seats – Leather bucket seats with driver's manual height adjust	•

• = Standard ○ = Optional at extra cost

* Note: A rear-facing child seat should never be placed in the front passenger seat when the Ford vehicle is equipped with a front passenger's or side airbags.

body colour and trim availability

Seat Trim	Fabric	Leather
Solid Body Colours		
Eternal Red	B	B
Brilliant Black	B/P	B/P
Metallic Body Colours*		
Passion Red	B	B
Vivid Green	B/P	B/P
Champagne Silver	B/P	B/P
Supreme Blue	B	B

B – Ebony Black; P – Medium Dark Parchment, / – Choice of fabric colour

* Metallic paint is optional at extra cost

trim colours



XLT
Premium fabric
Medium Dark Parchment



XLT
Premium fabric
Ebony Black



XLT
Nudo leather
Medium Dark Parchment



XLT
Nudo leather
Ebony Black

solid body colours



Eternal Red



Brilliant Black

metallic body colours



Passion Red



Vivid Green



Champagne Silver



Supreme Blue



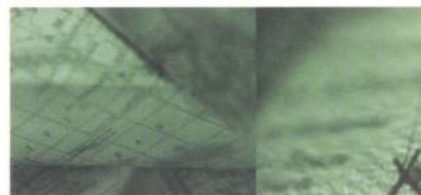
ford credit

your complete financing solution across the entire ford range

As Ford's own bank, and a wholly-owned subsidiary of Ford Motor Company, Ford Credit provides vehicle finance to more than 7 million private and business customers worldwide. Here in Britain, Ford Credit offers you simplicity and choice through a wide range of finance and insurance packages. Ford Business Partner is a specialist division of Ford Credit offering a range of well-proven finance products for business customers. Here are the key features of our most popular packages generally available for your choice of vehicle from the extensive Ford range:

options

Options is designed to give you choice. Developed jointly by Ford Credit and Ford Motor Company in 1992, it continues to combine all of the benefits of traditional methods of financing to give you an attractive way to finance your Ford car.



conditional sale

Conditional Sale is the simple and traditional route to financing vehicle ownership. Convenient to arrange and with flexible terms to suit your needs, owning your Ford car has never been so easy.



ford business partner contract hire[†]

Contract Hire is the sure way of keeping a full quota of vehicles on the road every day, while keeping budget payments 100% predictable. With a fixed monthly rental, you have total budgetary control, and as the vehicle is off balance sheet, the commitment doesn't affect key financial metrics.



ford business partner flexible lease[†]

With Flexible Lease, your payments cover the use of the vehicle. Once all payments have been received, you can sell the vehicle as our agent and we will return the sale proceeds (less any monies owed to us) as a rebate of rentals.



insurance and maintenance plans

To help maintain and protect your investment, Ford Credit offers a variety of products to suit your needs and budget. Ford Insure* is a comprehensive motor insurance package exclusively designed for Ford owners, with everything you demand from an insurance policy – and more. Also available is the Protected Payments Plan* for worry-free motoring, Value Guaranteed Insurance* to protect your vehicle's value in the event of a total loss, and Ford Service Connect[‡] for additional servicing, warranty and RAC cover. Business customers are able to benefit from a range of insurance and maintenance plans designed for their specific needs.

for further details, please contact your local ford dealer or
www.fordcredit.co.uk



Finance subject to status. Guarantees and indemnities may be required. Written quotations available on request: Freepost Ford Credit.

[†]Business Users only. [‡]Subject to conditions.

*Insurance is underwritten by Norwich Union Insurance Limited, registered in England No. 99122. Member of the General Insurance Standards Council, member of the Insurance Ombudsman Bureau. Member of the Association of British Insurers.
Registered office at 8 Surrey Street, Norwich NR1 3NG.



BY APPOINTMENT TO
HER MAJESTY THE QUEEN
MOTOR VEHICLE MANUFACTURERS
FORD MOTOR COMPANY LIMITED
BRENTWOOD ESSEX



BY APPOINTMENT TO
H.M. QUEEN ELIZABETH THE QUEEN MOTHER
MOTOR VEHICLE MANUFACTURERS
FORD MOTOR COMPANY LIMITED
BRENTWOOD ESSEX



BY APPOINTMENT TO
H.R.H. THE PRINCE OF WALES
MOTOR VEHICLE MANUFACTURERS
FORD MOTOR COMPANY LIMITED
BRENTWOOD ESSEX

the ford feature model

To simplify your decision-making, we now offer a Ford Feature Model for each range. Each Ford Feature Model includes, as standard, the most popular features from the range. Most importantly, Ford Feature Models give you great value for money.

UEFA champions league

Ford. Your dependable football companion that takes you all the way there and back on your football journey. Destination Football.

forddrive

The easiest way to get to know your preferred Ford Feature Model is through our Ford Drive Demonstration Programme. This gives you a complete test drive experience professionally and efficiently, with the services of your own Ford Drive co-ordinator.

fordmobility

MAGIC (Mobility and General Information Centre) is a Ford-dedicated care centre created to provide free and comprehensive information on all motoring and mobility issues to anyone requiring such assistance. In particular, if you are a recipient of HRDLA, elderly or a carer, you will find MAGIC an invaluable one-stop shop for all sorts of information. For example, MAGIC provides information on the Ford Dealer network, Ford vehicle information – detailing dimensions such as door heights and widths, as well as pricing, comparisons with other manufacturers' vehicles, assessment centres, vehicle adaptations, charities, even holiday information.

MAGIC has many special offers for HRDLA recipients, call free on 0800 240 241.

ford service connect

Every new Ford car sold from October 2000 is protected by 12 months' unlimited mileage manufacturer's warranty, plus the option of extending this warranty with a no-cost 3-year/60,000 miles Ford Service Connect Plan. (For Escort and prior model Mondeo, the no-cost warranty extension applies to retail customers only.) Plan upgrades are also available, giving you the option of worry-free motoring for up to 5 years.

fordjourney

For a straightforward, quick and worry-free way to buy a new Ford online, visit **www.fordjourney.com**. Offering you access to the widest selection of new Ford cars available on the Internet, and fast delivery, Ford Journey puts you in control.

ford rapid fit

The national fast-fit network backed by Ford, offering you the convenience of a 'no-appointment-necessary, while-you-wait' service covering tyres, exhausts, brakes, batteries and much more. There are over 300 sites nationwide.

ford accident repair centres

If your Ford is involved in an accident, your Ford Dealer is best placed to return it to its pre-accident condition. Dealerships displaying the Ford Accident Repair Centre sign all meet the rigorous customer service and repair quality standards laid down by Ford, and offer a three-year workmanship guarantee.

ford customer relationship centre

In the unlikely event that your Ford Dealer can't help you or you need to speak to Ford directly, the Ford Customer Relationship Centre is just a phone call away. Call local rate **0845 841 1111**.

The Government fuel figures do not express or imply any guarantee of the fuel consumption of any particular car. The cars themselves have not been tested and there are inevitably differences between individual cars of the same model. In addition, a car may incorporate particular modifications. Furthermore, the driver's style and road and traffic conditions, as well as the extent to which the car has been driven and the standard of maintenance, will affect its fuel consumption.

Insurance Groups are only as recommended by the Association of British Insurers. You should always consult your insurance adviser for confirmation.

Illustrations, descriptions and specifications.

This catalogue was correct at the time of going to print. However, Ford policy is one of continuous product development. The right is reserved to change specifications, colours and prices of the models and items illustrated and described in this publication at any time. For the latest details always consult your Ford Dealer.

Optional Equipment. Throughout this publication, wherever a feature is described as being an 'Option' or 'Optional Fitment/Pack' etc, you should assume that it will be at extra cost to the base vehicle, unless specifically stated to the contrary.

All models and colour combinations are subject to availability.

BJN 16385. Designed by Burrows, Shenfield, Essex, England. Produced by Werbeagentur Zetweka, Printed by Reiff Print KG. PN 179515/0106/10m/GB

Published by Ford Motor Company Limited, Brentwood, Essex, England.

Registered in England No 235446.

FA 1395 June 2001.

© Ford Motor Company Limited.

www.ford.co.uk

Dealer:

