

RANGER XL

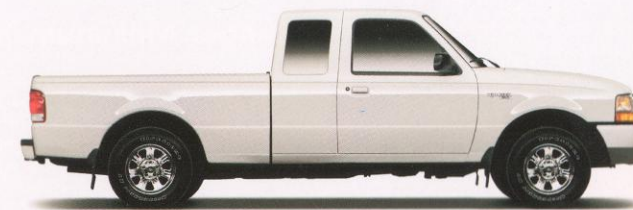
- SecurLock™ Passive Anti-Theft System (V6)
- Front and rear platinum bumpers
- 15" argent steel wheels (5)
- Dual foldaway manual mirrors – right-hand convex
- Mud flaps
- Driver and passenger airbags
- Cigarette lighter and 12-volt powerpoint
- Intermittent speed-sensitive windshield wipers
- Vinyl 60/40 split bench seat (Regular Cab)
- Cloth 60/40 split bench seat (SuperCab)
- Rear jump seats (SuperCab 2-door) (4-door option seats deleted)
- Floor console with cupholders and ash cup (late availability)
- AM/FM stereo/digital clock
- P225/70R15SL BSW all-season (4x2) (5)
- P215/75R15SL OWL all-terrain (4x4) (includes full-size P225 BSW spare)
- Rear-wheel ABS



RANGER XL 4x2 Sport Appearance Group



RANGER XL 4x2 Trailhead Group



RANGER XLT 4x2 Sport Appearance Group



RANGER XLT 4x4 Off-Road Group

Option Groups

RANGER XL 4x2 Sport Appearance Group

- Color-keyed bumpers and grille
- 15" silver styled steel wheels (includes steel spare)
- P225/70R15SL OWL all-season tires (includes BSW spare)
- Sport decal
- Spare tire access lock

RANGER XL 4x2 Trailhead Group

- 16" 5-spoke cast aluminum wheels (includes 15" steel spare)
- P245/75R16SL OWL all-terrain tires (includes temporary full-size 15" P235 BSW spare)
- 4x4 torsion bar front suspension
- 4x4 argert grille with front tow hooks, argent bumpers and 4x4 valance with fog lamps
- Styled manual mirrors
- Payload package #2: 4,820-lb. GVWR with 1,580-lb. maximum payload
- Tachometer
- AM/FM stereo/single CD player/digital clock
- "Trailhead" decal

RANGER XLT Sport Appearance Group

- Color-keyed bumpers and grille
- 15" chrome styled steel wheels (4x2 only) (includes steel spare)
- 16" 5-spoke cast aluminum wheels (4x4 only) (includes 15" steel spare)
- P225/70R15SL OWL all-season tires (4x2 only) (includes BSW spare)
- P245/75R16SL OWL all-terrain tires (4x4 only) (includes temporary full-size 15" P235 BSW spare)
- "Sport" decal
- Fog lamps (V6)
- Color-keyed wheelip moldings (4x4 Styleside only)
- Styled manual mirrors
- Tachometer

RANGER XLT 4x4 Off-Road Group

- 16" 5-spoke cast aluminum wheels (includes 15" steel spare)
- Bulge Body shock absorbers
- P245/75R16SL OWL all-terrain tires (includes temporary full-size 15" P235 BSW spare)
- "4x4 Off-Road" decals
- Styled manual mirrors
- 4.10 rear axle ratio
- Skid plates

Product Changes and Options Availability

Following publication of the catalog, certain changes in standard equipment, options, prices and the like, or product delays, may have occurred which would not be included in these pages. Your Ford Dealer is your best source for up-to-date information. Ford Division reserves the right to change product specifications at any time without incurring obligations. Options shown or described are available at extra cost and may be offered only in combination with other options or subject to additional ordering requirements or limitations.

Harvest Gold
Clearcoat Metallic



Mandarin Gold
Clearcoat Metallic



Bright Red
Clearcoat



Toreador Red
Clearcoat Metallic



Deep
Wedgewood Blue
Clearcoat Metallic



Bright
Atlantic Blue
Clearcoat Metallic



Medium Platinum
Clearcoat Metallic



Amazon Green
Clearcoat Metallic



Black
Clearcoat



Oxford White
Clearcoat



Exterior Paint Colors

XL

Harvest Gold Clearcoat Metallic
Mandarin Gold Clearcoat Metallic
Bright Red Clearcoat
Toreador Red Clearcoat Metallic
Deep Wedgewood Blue Clearcoat Metallic
Bright Atlantic Blue Clearcoat Metallic
Medium Platinum Clearcoat Metallic
Amazon Green Clearcoat Metallic
Black Clearcoat
Oxford White Clearcoat

Interior Trim

XL

Harvest Gold Clearcoat Metallic
Mandarin Gold Clearcoat Metallic
Bright Red Clearcoat
Toreador Red Clearcoat Metallic
Deep Wedgewood Blue Clearcoat Metallic
Bright Atlantic Blue Clearcoat Metallic
Medium Platinum Clearcoat Metallic
Amazon Green Clearcoat Metallic
Black Clearcoat
Oxford White Clearcoat

XL Sport Appearance Group

Bright Red Clearcoat
Black Clearcoat
Oxford White Clearcoat

Exterior Paint Colors

XLT

Harvest Gold Clearcoat Metallic
Mandarin Gold Clearcoat Metallic
Bright Red Clearcoat
Toreador Red Clearcoat Metallic
Deep Wedgewood Blue Clearcoat Metallic
Bright Atlantic Blue Clearcoat Metallic
Medium Platinum Clearcoat Metallic
Amazon Green Clearcoat Metallic
Black Clearcoat
Oxford White Clearcoat

Interior Trim

XLT

Harvest Gold Clearcoat Metallic
Mandarin Gold Clearcoat Metallic
Bright Red Clearcoat
Toreador Red Clearcoat Metallic
Deep Wedgewood Blue Clearcoat Metallic
Bright Atlantic Blue Clearcoat Metallic
Medium Platinum Clearcoat Metallic
Amazon Green Clearcoat Metallic
Black Clearcoat
Oxford White Clearcoat

RANGER Dealer-Installed Accessories



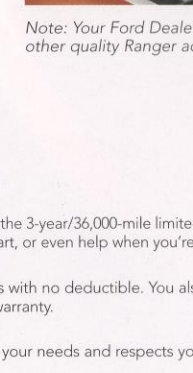
Wraparound Aero Hood/Bug Deflector is constructed of virtually unbreakable G.E. Lexan.®



Tubular Pickup Box Rails add function and style to your Ranger.



Bed-Mount Bike Carrier Rack allows you to haul bikes securely in the truck bed.



Soft Tonneau Cover snaps to the rail system for quick attachment.

Note: Your Ford Dealer can show you other quality Ranger accessories.

Roadside Assistance

Every new Ford includes the assurance of a 24-hour emergency Roadside Assistance Program provided during the 3-year/36,000-mile limited warranty period. Ask your Ford Dealer for complete details on this program which includes such services as fuel delivery, tire change, jump start, or even help when you're locked out of your vehicle.

New Vehicle Limited Warranty

Under the New Vehicle Limited Warranty, you receive bumper-to-bumper coverage for 3 years/36,000 miles with no deductible. You also receive corrosion perforation coverage for five years with unlimited mileage and no deductible. Ask your Ford Dealer for a copy of the warranty.

Quality Care

The people who know your vehicle best. The parts designed for it. A service department that understands your needs and respects your time. That's what Quality Care is all about.

Competitive comparisons based on published 1999 competitive data.

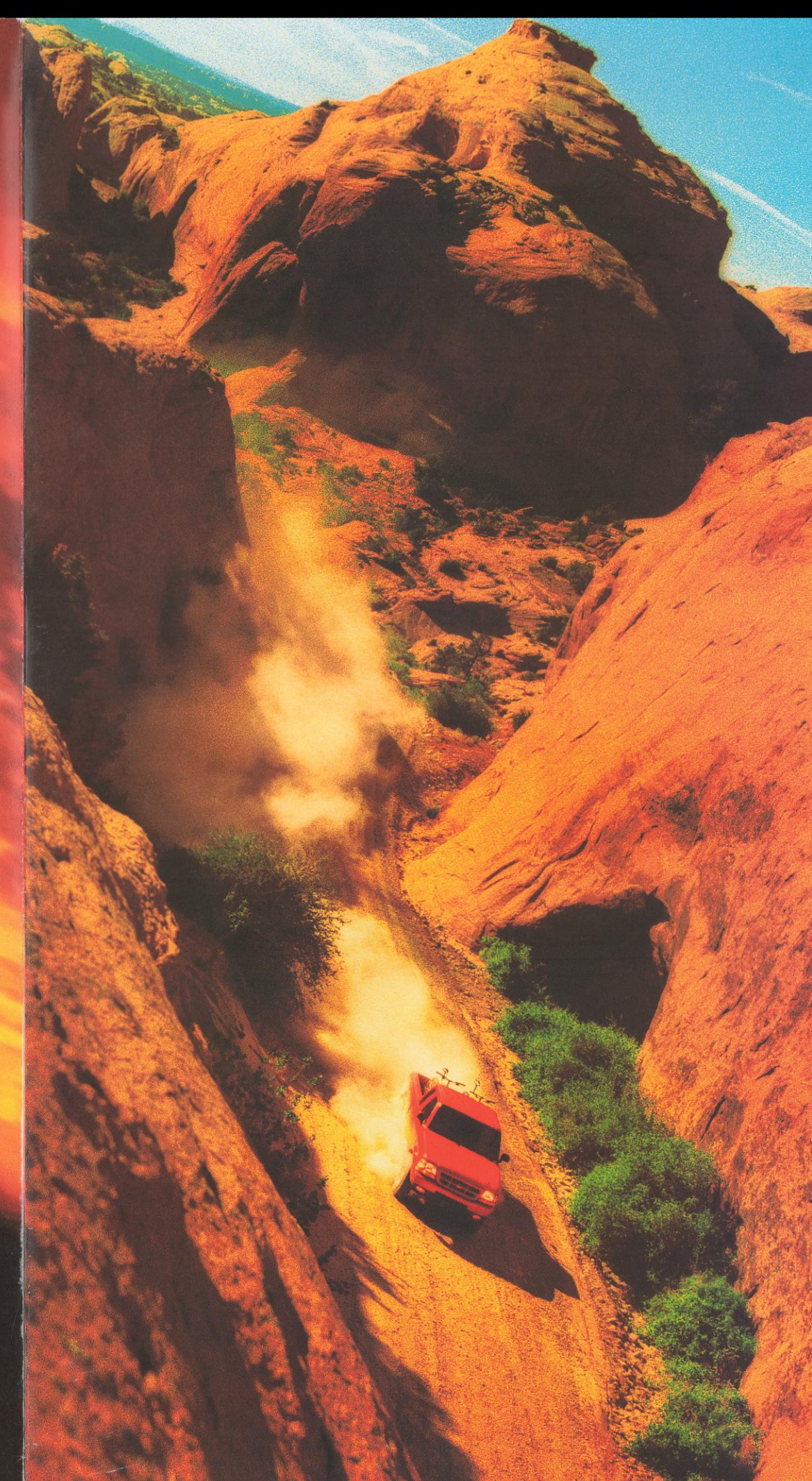
fordforce
COMMUNITY ACTION TEAM

Bettering the communities in which we do business is the goal of the Ford Force. We're organized, mobilized and coming to a community near you. Join us.

Visit our website at www.fordvehicles.com



2000 RANGER



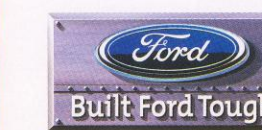
There are times when you need to go out and set up your own hurdles. Buy maps for places without any roads. Find out how you measure up to your own standards.

Making your mark on the world doesn't have to be such a tough thing. Sometimes, a few miles of tire tracks work just fine.

Sooner or later, you have to get back to the asphalt with the line down the middle. But until then, you're free to roam the shoulders of civilization. And to scout the outer edges of self reliance and discovery.

Yesterday's a distant memory. Tomorrow's eons away.

With Ranger, you don't just seize the moment. You savor it.



Engine Specifications

ENGINE	Displacement (liters/cubic inches)	Bore x Stroke	Compression Ratio	Horsepower (SAE net)	Torque, lbs./ft. (SAE net)
2.5-Liter SEFI I4	2.5/153	3.78 x 3.40	9.37:1	119 @ 5,000 rpm	146 @ 3,000 rpm
3.0-Liter FFV SEFI V6*	3.0/182	3.50 x 3.14	9.14:1	150 @ 4,750 rpm	190 @ 3,650 rpm
4.0-Liter SEFI V6	4.0/245	3.95 x 3.32	9.0:1	160 @ 4,200 rpm	225 @ 2,750 rpm

*Operates with 100% unleaded gasoline or environmentally responsible E-85 fuel.

Powertrain Availability by Trim Model

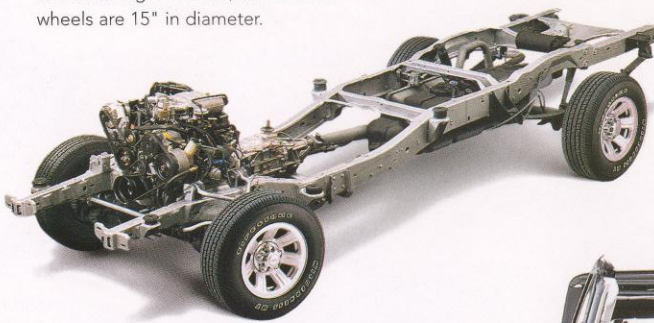
	Regular Cab 4x2		SuperCab 4x2		Regular Cab 4x4		SuperCab 4x4	
	XL	XLT	XL	XLT	XL	XLT	XL	XLT
2.5L I4/5-Speed Manual OD	●	●	●	●	●	●	●	●
2.5L I4/4-Speed Automatic OD	●	●	●	●	●	●	●	●
3.0L FFV V6/5-Speed Manual OD	●	●	●	●	●	●	●	●
3.0L FFV V6/4-Speed Automatic OD	●	●	●	●	●	●	●	●
4.0L V6/5-Speed Manual OD	—	●	—	●	—	●	—	●
4.0L V6/5-Speed Automatic OD	—	●	—	●	—	●	—	●



The optional 4.0-liter V6 is the most powerful Ranger engine. It can be teamed with a five-speed automatic overdrive transmission, an exclusive in compact trucks (excluding non-Ford branded derivatives).



Ranger's rigid, fully boxed front frame offers better fit and finish due to precise welds. It also achieves excellent front torsional rigidity, which contributes to better ride and handling. For 2000, all standard wheels are 15" in diameter.



When outfitted with the available V6 and the Class III trailer hitch receiver, Ranger can tow trailers weighing up to 6,060 pounds (when properly equipped). The standard four-pin trailer tow harness allows for convenient trailer electrical hookup.



The electric shift of the shift-on-the-fly four-wheel-drive system engages and disengages at the transfer case. This system allows "shifting on the fly" capability with smooth operation.

Built Ford Tough

There's no nonsense in Ford Ranger. No compromise. The *Built Ford Tough* bloodline goes back too far for that. Ranger two- and four-wheel-drive models set a compact pickup standard in rugged performance. They work, play, ride and drive big.

Smart

Ranger's been America's best-selling compact pickup for the past 12 years. It's also been named a *Consumers Digest* "Best Buy" for 1999. The popular term for all this is *no brainer*.

Innovative

There are those who wait to see what the rest of the crowd is going to do. And those who grab the lead. Ranger was the first in its class to offer a four-door SuperCab* You don't excel by watching from the bench while someone else takes your cuts.

The four-wheel-drive attitude

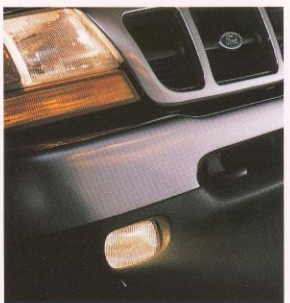
The best way to forget the 9-to-5 world is to leave it far behind. It's called four-wheeling. And if the rat racers haven't caught on yet, all the better. Choose the SuperCab, and you can share your getaway with four other escapees. Ranger is equipped with precise rack-and-pinion steering. And it's the sales leader in 4x4 compact pickups. So let the rest of the world remain bumper to bumper. In a Ranger 4x4, you go your own way.

Crash test leadership

A protective safety structure helped Ranger achieve the highest overall government crash test ratings among compact pickups in 1999.* That includes a five-star designation for the side and four stars for the front. Ranger's Second



The available XL 4x2 Trailhead Group not only looks like a 4x4, it includes the hefty 4x4 torsion bar front suspension to help you get to the places where the beaten path cooperatively disappears. Cool wheels. Fog lamps. CD radio. Extra style. Find your trail.



Fog lamps are standard with XLT 4x4 and included with the XL 4x2 Trailhead Group and the XLT 4x2 Sport Appearance Group (V6 only).



The optional XLT 4x4 Off-Road Group includes a stainless steel front suspension skid plate for added protection from rough terrain.



Standard with XLT, available with XL and included with the XL 4x2 Trailhead Group, the AM/FM stereo radio includes a single CD player for that true, clean digital sound.

Generation airbags are designed to further enhance protection for driver and passenger.** They're less likely to cause injury due to bag deployment. Standard power brakes include a rear anti-lock system. Four-wheel anti-lock brakes are optional (included with XLT 4x4).

A little help from technology

Speed-sensitive wipers automatically wipe faster as vehicle speed increases, helping to clear the view. And SecuriLock™, an electronic anti-theft system, verifies that the ignition key used is the proper one, helping to keep your truck your truck (V6).

Ranger and the environment

Every 3.0L V6 Ranger is equipped with a flexible-fuel system which can run on 100% unleaded gasoline, E-85 fuel (which is comprised of 85% ethanol and 15% gasoline), or any combination of the two fuels. Ethanol is an environmentally responsible, high-octane blending compound.

There is also a Ranger Electrical Vehicle (EV). This robust, zero-emission member of the Ranger family can crank out 140 foot-pounds of torque. Not bad, considering it runs on sheer voltage.



15" argent steel wheel with bright hub cap (standard with XL 4x2/4x4) (OWL all-terrain tires standard on 4x4)



15" chrome styled steel (included in XLT 4x2 Sport Appearance Group and XLT 4x2 Wheel and Tire Group)



15" cast aluminum (standard with XLT 4x4)



15" silver styled steel (standard on XLT 4x2, included with XL 4x2 Sport Appearance Group)



16" 5-spoke cast aluminum (included in XLT 4x4 Off-Road Group, XLT Sport Appearance Group [4x4] and XL 4x2 Trailhead Group)

No matter how tough the going gets, you don't want a rugged ride.

Bull riding is for rodeos.

Ranger seats feature multi-position recliners.

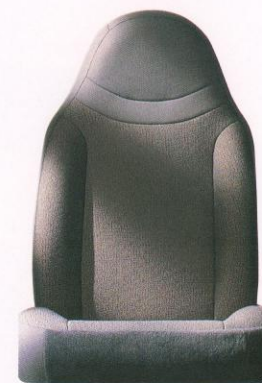
Seats track back far enough to give you that much needed foot and leg room. Available sport

buckets include manual driver's lumbar support.

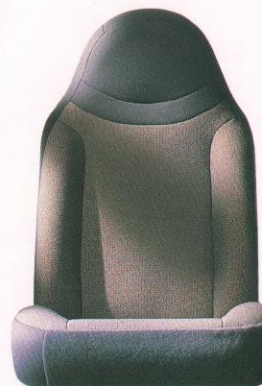
And optional speed control makes life easier through a simple button design that allows you to increase and decrease speeds in increments of one mile per hour.



Medium Prairie Tan Cloth



Medium Graphite Cloth



Dark Graphite Cloth

Ranger SuperCab models are available with four doors for extra convenience.



Ranger

There are always three things you can count on in this world. Football in January. Baseball in October. And the versatility of Ford Ranger. Toss in the surfboard and the volleyball net. This is a truck that loves to play in the sand. But don't hesitate to throw in the power tools or the plasterboard, either. Built Ford Tough Ranger makes an ideal assistant for that weekend project. It's a truck that can keep up with you when you're working or playing your hardest. Ready when you are. Regardless of what you're ready for.



Ranger Payload (lbs.)		
	Payload Range	GVWR* Range
4x2 Regular Cab	1,260-1,640	4,340-4,800
4x4 Regular Cab	1,260-1,540	4,760-5,020
4x2 SuperCab	1,260-1,620	4,800-4,960
4x4 SuperCab	1,260-1,540	5,080-5,140

Ranger Maximum Trailer Weights (lbs.)			
	GCWR** Range	Regular Cab Range	SuperCab Range
Manual trans.	4,800-7,000	1,580-3,600	1,360-3,400
Automatic trans.	5,500-9,500	2,180-6,060	3,660-5,860

Ranger Specifications		
Regular Cab	4x2	4x4
GVW Rating (max.)	4,800 lbs.	5,020 lbs.
Front suspension	Short/long arm with coil springs	Short/long arm with torsion bars
Shock absorbers	Gas-pressurized	HD gas-pressurized
Front stabilizer bar	Standard	Standard
Rear stabilizer bar	-	Standard
Power brakes with rear anti-lock	Standard	Standard
Power brakes with 4-wheel anti-lock	Optional	Optional†
4x4 transfer case	-	Select-drive electric shift
Fuel capacity	16.5 gals. (SWB) 20 gals. (LWB)	16.5 gals. (SWB) 20 gals. (LWB)
Steering	Power rack-and-pinion	Power rack-and-pinion
SuperCab	4x2	4x4
GVW Rating (max.)	4,960 lbs.	5,140 lbs.
Front suspension	Short/long arm with coil springs	Short/long arm with torsion bars
Shock absorbers	Gas-pressurized	HD gas-pressurized
Front stabilizer bar	Standard	Standard
Rear stabilizer bar	Standard	Standard
Power brakes with rear anti-lock	Standard	Standard
Power brakes with 4-wheel anti-lock	Optional	Optional†
4x4 transfer case	-	Select-drive electric shift
Fuel capacity	19.5 gallons	19.5 gallons
Steering	Power rack-and-pinion	Power rack-and-pinion

*Gross Vehicle Weight Rating **Gross Combined Weight Rating (trailer plus vehicle weight) †Standard with XLT