

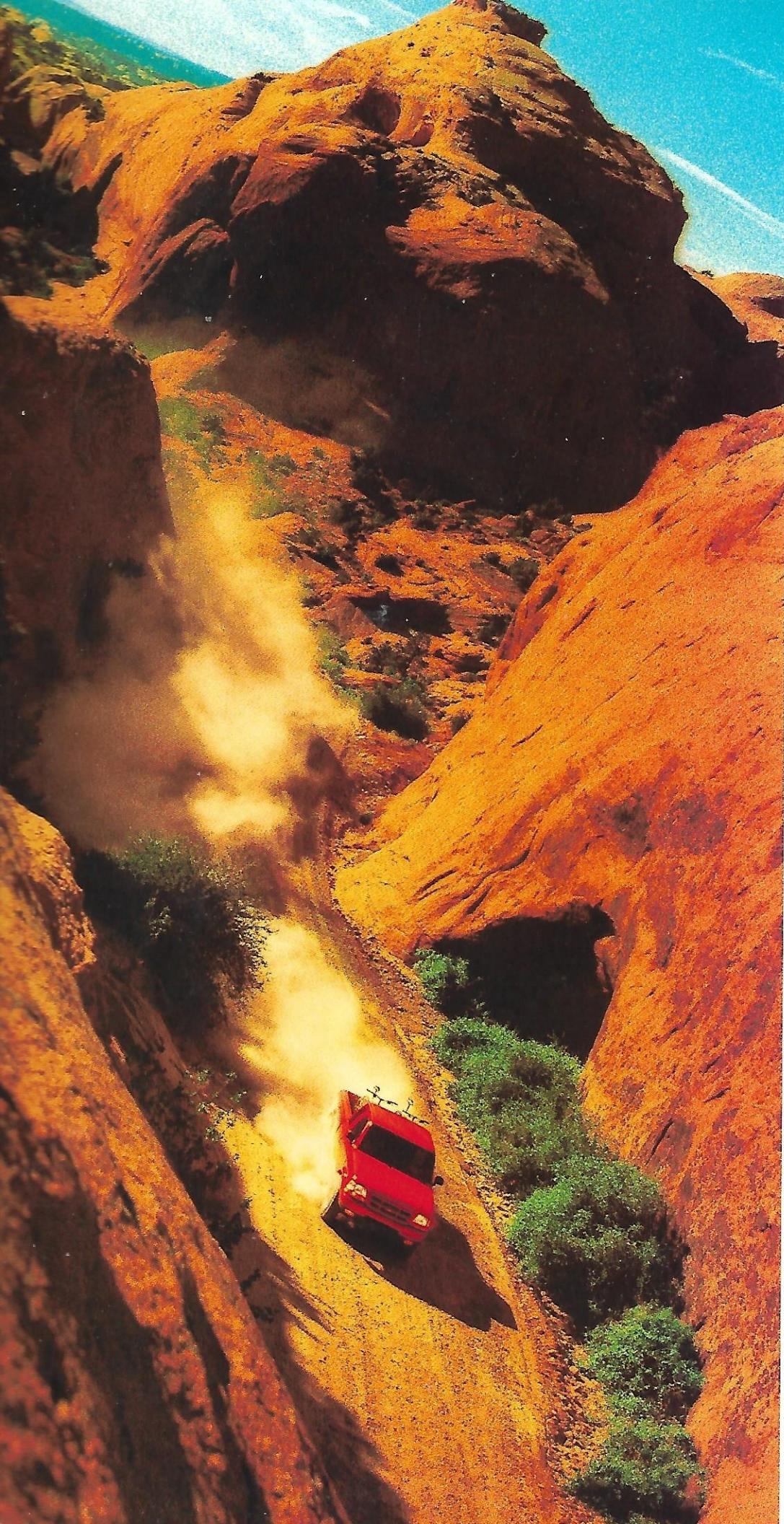
# RANGER



2000 RANGER







There are times when you need to go out and set up your own hurdles. Buy maps for places without any roads. Find out how you measure up to your own standards.

Making your mark on the world doesn't have to be such a tough thing. Sometimes, a few miles of tire tracks work just fine.

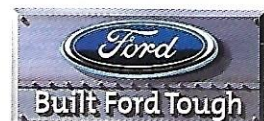
Sooner or later, you have to get back to the asphalt with the line down the middle. But until then, you're free to roam the shoulders of civilization.

And to scout the outer edges of self reliance and discovery.

Yesterday's a distant memory.

Tomorrow's eons away.

With Ranger, you don't just seize the moment. You savor it.





## RANGER XL

- Securilock™ Passive Anti-Theft System (V6)
- Front and rear platinum bumpers
- 15" argent steel wheels (5)
- Dual foldaway manual mirrors – right-hand convex
- Mud flaps
- Driver and passenger airbags
- Cigarette lighter and 12-volt powerpoint
- Intermittent speed-sensitive windshield wipers
- Vinyl 60/40 split bench seat (Regular Cab)
- Cloth 60/40 split bench seat (SuperCab)
- Rear jump seats (SuperCab 2-door) (4-door option seats deleted)
- Floor console with cupholders and ash cup (late availability)
- AM/FM stereo/digital clock
- P225/70R15SL BSW all-season (4x2) (5)
- P215/75R15SL OWL all-terrain (4x4) (includes full-size P225 BSW spare)
- Rear-wheel ABS

## RANGER XLT (XL features plus)

- Cloth 60/40 split bench seat (Regular Cab)
- Pivoting rear quarter windows (2-door SuperCab only)
- 15" silver styled steel wheels (4x2) (includes steel spare)
- 15" cast aluminum wheels (4x4) (includes steel spare)
- AM/FM stereo/single CD player/digital clock
- P235/75R15SL OWL all-terrain tires (4x4) (includes temporary full-size P235 BSW spare)
- Air conditioning
- Fog lamps (4x4 only)
- 4 wheel ABS (4x4 only)
- Rear jump seats

## Option Groups

### RANGER XL 4x2 Sport Appearance Group

- Color-keyed bumpers and grille
- 15" silver styled steel wheels (includes steel spare)
- P225/70R15SL OWL all-season tires (includes BSW spare)
- Sport decal
- Spare tire access lock

### RANGER XL 4x2 Trailhead Group

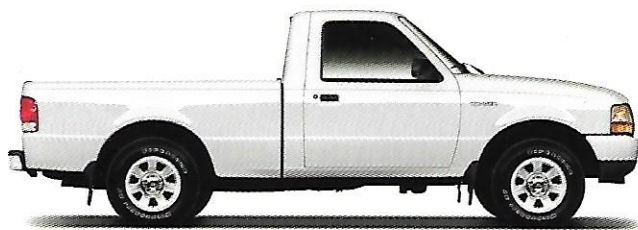
- 16" 5-spoke cast aluminum wheels (includes 15" steel spare)
- P245/75R16SL OWL all-terrain tires (includes temporary full-size 15" P235 BSW spare)
- 4x4 torsion bar front suspension
- 4x4 argent grille with front tow hooks, argent bumpers and 4x4 valance with fog lamps
- Styled manual mirrors
- Payload package #2: 4,820-lb. GVWR with 1,580-lb. maximum payload
- Tachometer
- AM/FM stereo/single CD player/digital clock
- "Trailhead" decal

### RANGER XLT Sport Appearance Group

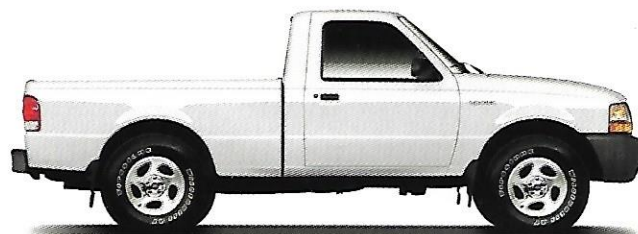
- Color-keyed bumpers and grille
- 15" chrome styled steel wheels (4x2 only) (includes steel spare)
- 16" 5-spoke cast aluminum wheels (4x4 only) (includes 15" steel spare)
- P225/70R15SL OWL all-season tires (4x2 only) (includes BSW spare)
- P245/75R16SL OWL all-terrain tires (4x4 only) (includes temporary full-size 15" P235 BSW spare)
- "Sport" decal
- Fog lamps (V6)
- Color-keyed wheelip moldings (4x4 Styleside only)
- Styled manual mirrors
- Tachometer

### RANGER XLT 4x4 Off-Road Group

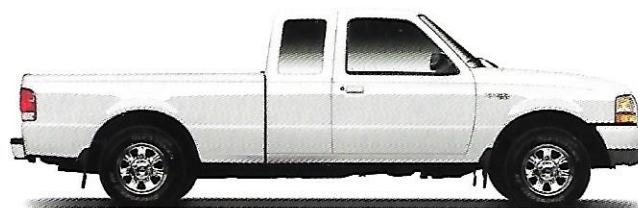
- 16" 5-spoke cast aluminum wheels (includes 15" steel spare)
- Bulge Body shock absorbers
- P245/75R16SL OWL all-terrain tires (includes temporary full-size 15" P235 BSW spare)
- "4x4 Off-Road" decals
- Styled manual mirrors
- 4.10 rear axle ratio
- Skid plates



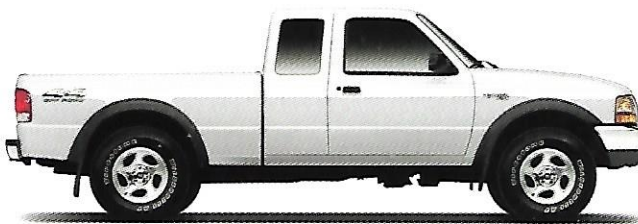
RANGER XL 4x2 Sport Appearance Group



RANGER XL 4x2 Trailhead Group



RANGER XLT 4x2 Sport Appearance Group



RANGER XLT 4x4 Off-Road Group

#### Product Changes and Options Availability

Following publication of the catalog, certain changes in standard equipment, options, prices and the like, or product delays, may have occurred which would not be included in these pages. Your Ford Dealer is your best source for up-to-date information. Ford Division reserves the right to change product specifications at any time without incurring obligations. Options shown or described are available at extra cost and may be offered only in combination with other options or subject to additional ordering requirements or limitations.



## Engine Specifications

ENGINE	Displacement (liters/cubic inches)	Bore x Stroke	Compression Ratio	Horsepower (SAE net)	Torque, lbs./ft. (SAE net)
2.5-Liter SEFI I4	2.5/153	3.78 x 3.40	9.37:1	119 @ 5,000 rpm	146 @ 3,000 rpm
3.0-Liter FFV SEFI V6*	3.0/182	3.50 x 3.14	9.14:1	150 @ 4,750 rpm	190 @ 3,650 rpm
4.0-Liter SEFI V6	4.0/245	3.95 x 3.32	9.0:1	160 @ 4,200 rpm	225 @ 2,750 rpm

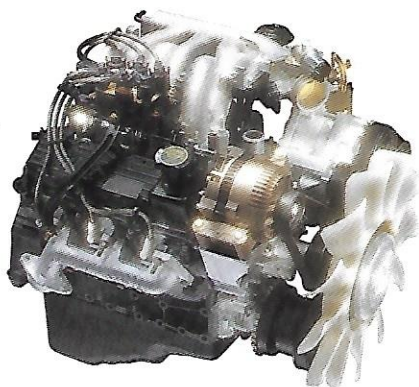
\*Operates with 100% unleaded gasoline or environmentally responsible E-85 fuel.

## Powertrain Availability by Trim Model

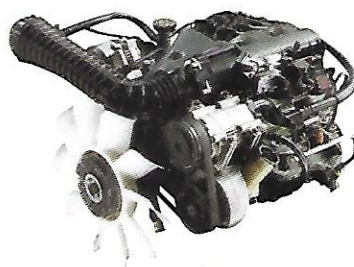
	Regular XL	Cab 4x2 XLT	SuperCab 4x2 XL	SuperCab 4x2 XLT		Regular XL	Cab 4x4 XLT	SuperCab 4x4 XL	SuperCab 4x4 XLT
2.5L I4/5-Speed Manual OD	●	●	●	●	3.0L FFV V6/5-Speed Manual OD	●	●	●	●
2.5L I4/4-Speed Automatic OD	●	●	—	—	3.0L FFV V6/4-Speed Automatic OD	●	●	●	●
3.0L FFV V6/5-Speed Manual OD	●	●	●	●	4.0L V6/5-Speed Manual OD	—	●	—	●
3.0L FFV V6/4-Speed Automatic OD	●	●	●	●	4.0L V6/5-Speed Automatic OD	—	●	—	●
4.0L V6/5-Speed Manual OD	—	●	—	●					
4.0L V6/5-Speed Automatic OD	—	●	—	●					

standard ● optional ●

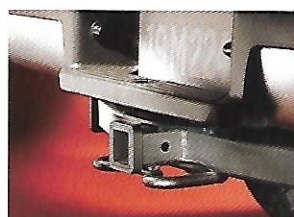
Every 3.0-liter Ranger is equipped with a flexible-fuel system. The 150-horsepower V6 uses unleaded gasoline, E-85 fuel or any blend of the two.



Ranger's rigid, fully boxed front frame offers better fit and finish due to precise welds. It also achieves excellent front torsional rigidity, which contributes to better ride and handling. For 2000, all standard wheels are 15" in diameter.



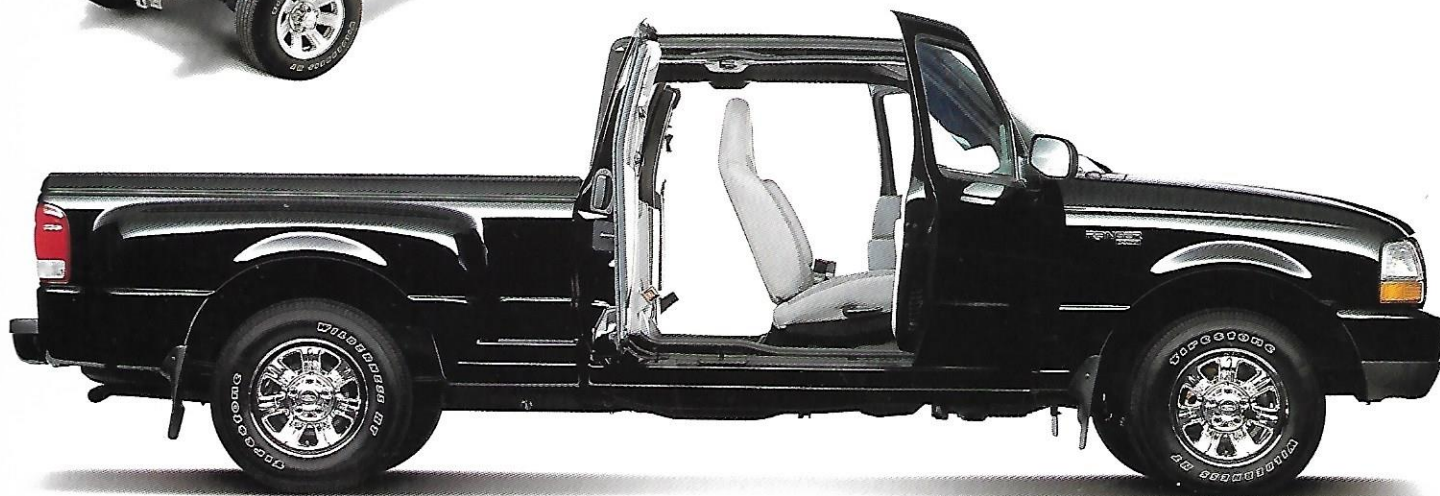
The optional 4.0-liter V6 is the most powerful Ranger engine. It can be teamed with a five-speed automatic overdrive transmission, an exclusive in compact trucks (excluding non-Ford branded derivatives).



When outfitted with the available V6 and the Class III trailer hitch receiver, Ranger can tow trailers weighing up to 6,060 pounds (when properly equipped). The standard four-pin trailer tow harness allows for convenient trailer electrical hookup.



The electric shift of the shift-on-the-fly four-wheel-drive system engages and disengages at the transfer case. This system allows "shifting on the fly" capability with smooth operation.



Ranger SuperCab models are available with four doors for extra convenience.



## Built Ford Tough

There's no nonsense in Ford Ranger. No compromise. The **Built Ford Tough** bloodline goes back too far for that. Ranger two- and four-wheel-drive models set a compact pickup standard in rugged performance. They work, play, ride and drive *big*.

## Smart

Ranger's been America's best-selling compact pickup for the past 12 years. It's also been named a *Consumers Digest* "Best Buy" for 1999. The popular term for all this is *no brainer*.

## Innovative

There are those who wait to see what the rest of the crowd is going to do. And those who grab the lead. Ranger was the first in its class to offer a four-door SuperCab\*. You don't excel by watching from the bench while someone else takes your cuts.

## The four-wheel-drive attitude

The best way to forget the 9-to-5 world is to leave it far behind. It's called four-wheeling. And if the rat racers haven't caught on yet, all the better. Choose the SuperCab, and you can share your getaway with four other escapees. Ranger is equipped with precise rack-and-pinion steering. And it's the sales leader in 4x4 compact pickups. So let the rest of the world remain bumper to bumper. In a Ranger 4x4, you go your own way.

## Crash test leadership

A protective safety structure helped Ranger achieve the highest overall government crash test ratings among compact pickups in 1999\*. That includes a five-star designation for the side and four stars for the front. Ranger's Second

Generation airbags are designed to further enhance protection for driver and passenger.\*\* They're less likely to cause injury due to bag deployment. Standard power brakes include a rear anti-lock system. Four-wheel anti-lock brakes are optional (included with XLT 4x4).

\*Excluding non-Ford branded derivatives. \*\*Always wear your safety belt and deactivate passenger-side airbag when using a rear-facing child safety seat.

## A little help from technology

Speed-sensitive wipers automatically wipe faster as vehicle speed increases, helping to clear the view. And SecuriLock™, an electronic anti-theft system, verifies that the ignition key used is the proper one, helping to keep your truck *your truck* (V6).

## Ranger and the environment

Every 3.0L V6 Ranger is equipped with a flexible-fuel system which can run on 100% unleaded gasoline, E-85 fuel (which is comprised of 85% ethanol and 15% gasoline), or any combination of the two fuels. Ethanol is an environmentally responsible, high-octane blending compound.

There is also a Ranger Electrical Vehicle (EV). This robust, zero-emission member of the Ranger family can crank out 140 foot-pounds of torque. Not bad, considering it runs on sheer voltage.



15" argent steel wheel with bright hub cap  
(standard with XL 4x2/4x4)  
(OWL all-terrain tires standard on 4x4)



15" chrome styled steel  
(included in XLT 4x2 Sport Appearance Group and XLT 4x2 Wheel and Tire Group)



15" cast aluminum  
(standard with XLT 4x4)



15" silver styled steel  
(standard on XLT 4x2, included with XL 4x2 Sport Appearance Group)



16" 5-spoke cast aluminum  
(included in XLT 4x4 Off-Road Group, XLT Sport Appearance Group [4x4] and XL 4x2 Trailhead Group)



Fog lamps are standard with XLT 4x4 and included with the XL 4x2 Trailhead Group and the XLT 4x2 Sport Appearance Group (V6 only).




The optional XLT 4x4 Off-Road Group includes a stainless steel front suspension skid plate for added protection from rough terrain.



Standard with XLT, available with XL and included with the XL 4x2 Trailhead Group, the AM/FM stereo radio includes a single CD player for that true, clean digital sound.



A photograph of the interior of a vehicle, focusing on the front seats. The seats are upholstered in a light-colored, textured fabric. The driver's seat is reclined back. In the lower-left foreground, a pair of red and black riding boots and a red helmet are visible. The dashboard and steering wheel are partially visible in the upper right.

No matter how tough  
the going gets, you don't  
want a rugged ride.

Bull riding is for rodeos.

Ranger seats feature  
multi-position recliners.

Seats track back far  
enough to give you that  
much needed foot and leg  
room. Available sport  
buckets include manual  
driver's lumbar support.

And optional speed con-  
trol makes life easier  
through a simple button  
design that allows you  
to increase and decrease  
speeds in increments of  
one mile per hour.





**Medium Prairie Tan  
Cloth**

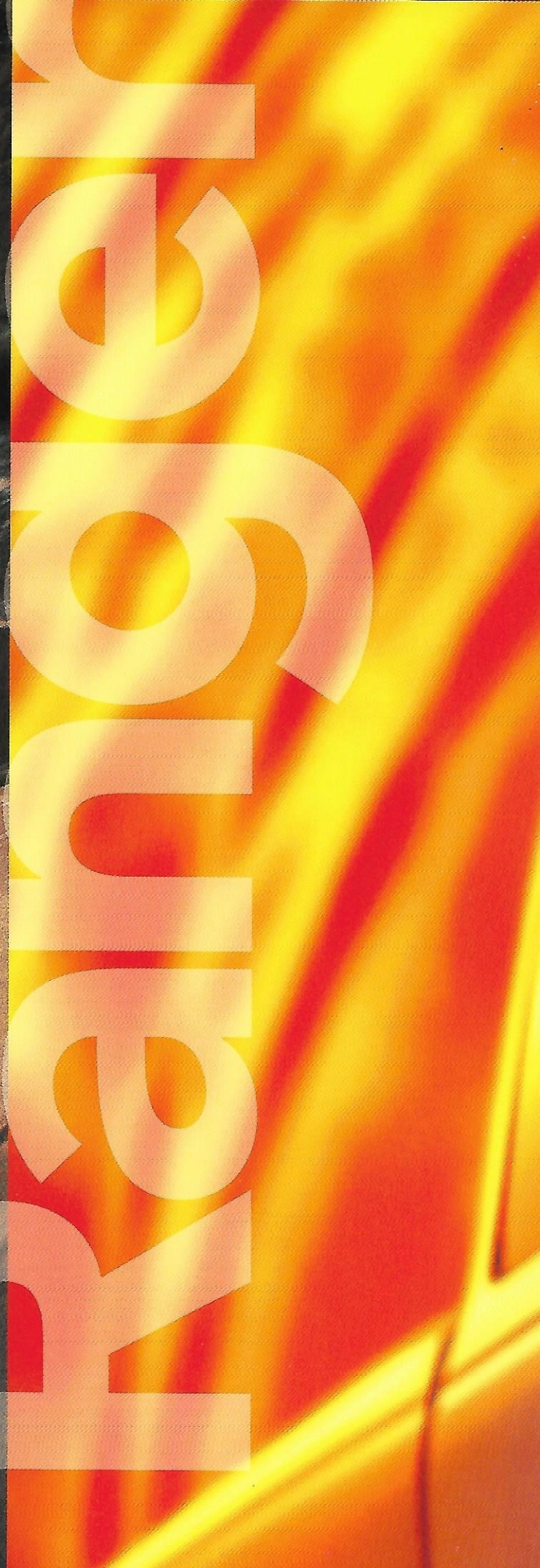


**Medium Graphite  
Cloth**



**Dark Graphite  
Cloth**









RANGER  
XLT











There are always three things  
you can count on in this  
world. Football in January.  
Baseball in October. And the  
versatility of Ford Ranger.  
Toss in the surfboard and the  
volleyball net. This is a truck  
that loves to play in the  
sand. But don't hesitate to  
throw in the power tools or  
the plasterboard, either.  
Built Ford Tough Ranger  
makes an ideal assistant for  
that weekend project. It's a  
truck that can keep up with  
you when you're working or  
playing your hardest. Ready  
when you are. Regardless of  
what you're ready for.











WILDERNESS AT



## Ranger Payload (lbs.)

	Payload Range	GVWR* Range
4x2 Regular Cab	1,260-1,660	4,340-4,800
4x4 Regular Cab	1,260-1,540	4,760-5,020
4x2 SuperCab	1,260-1,620	4,800-4,960
4x4 SuperCab	1,260-1,540	5,080-5,140

## Ranger Maximum Trailer Weights (lbs.)

	GCWR** Range	Regular Cab Range	SuperCab Range
Manual trans.	4,800-7,000	1,580-3,600	1,360-3,400
Automatic trans.	5,500-9,500	2,180-6,060	3,660-5,860

## Ranger Specifications

### Regular Cab

GVW Rating (max.)  
Front suspension  
Shock absorbers  
Front stabilizer bar  
Rear stabilizer bar  
Power brakes with rear anti-lock  
Power brakes with 4-wheel anti-lock  
4x4 transfer case  
Fuel capacity  
Steering

### 4x2

4,800 lbs.  
Short/long arm with coil springs  
Gas-pressurized  
Standard  
—  
Standard  
Optional  
—  
16.5 gals. (SWB) 20 gals. (LWB)  
Power rack-and-pinion

### 4x4

5,020 lbs.  
Short/long arm with torsion bars  
HD gas-pressurized  
Standard  
Standard  
Standard  
Optional†  
Select-drive electric shift  
16.5 gals. (SWB) 20 gals. (LWB)  
Power rack-and-pinion

### SuperCab

GVW Rating (max.)  
Front suspension  
Shock absorbers  
Front stabilizer bar  
Rear stabilizer bar  
Power brakes with rear anti-lock  
Power brakes with 4-wheel anti-lock  
4x4 transfer case  
Fuel capacity  
Steering

### 4x2

4,960 lbs.  
Short/long arm with coil springs  
Gas-pressurized  
Standard  
—  
Standard  
Optional  
—  
19.5 gallons  
Power rack-and-pinion

### 4x4

5,140 lbs.  
Short/long arm with torsion bars  
HD gas-pressurized  
Standard  
Standard  
Standard  
Optional†  
Select-drive electric shift  
19.5 gallons  
Power rack-and-pinion

\*Gross Vehicle Weight Rating \*\*Gross Combined Weight Rating (trailer plus vehicle weight) †Standard with XLT





## Exterior Paint Colors

### XL

<b>Harvest Gold</b> Clearcoat Metallic		
<b>Mandarin Gold</b> Clearcoat Metallic		
<b>Bright Red</b> Clearcoat		
<b>Toreador Red</b> Clearcoat Metallic		
<b>Deep Wedgewood Blue</b> Clearcoat Metallic		
<b>Bright Atlantic Blue</b> Clearcoat Metallic		
<b>Medium Platinum</b> Clearcoat Metallic		
<b>Amazon Green</b> Clearcoat Metallic		
<b>Black</b> Clearcoat		
<b>Oxford White</b> Clearcoat		

### XL Sport Appearance Group

<b>Bright Red</b> Clearcoat		
<b>Black</b> Clearcoat		
<b>Oxford White</b> Clearcoat		

## Interior Trim

Medium Graphite  
Medium Prairie Tan

## Exterior Paint Colors

### XL

<b>Harvest Gold</b> Clearcoat Metallic			
<b>Mandarin Gold</b> Clearcoat Metallic			
<b>Bright Red</b> Clearcoat			
<b>Toreador Red</b> Clearcoat Metallic			
<b>Deep Wedgewood Blue</b> Clearcoat Metallic			
<b>Bright Atlantic Blue</b> Clearcoat Metallic			
<b>Medium Platinum</b> Clearcoat Metallic			
<b>Amazon Green</b> Clearcoat Metallic			
<b>Black</b> Clearcoat			
<b>Oxford White</b> Clearcoat			

### XL Sport Appearance Group

<b>Bright Red</b> Clearcoat			
<b>Amazon Green</b> Clearcoat Metallic			
<b>Black</b> Clearcoat			
<b>Oxford White</b> Clearcoat			

## Interior Trim

Medium Graphite  
Medium Prairie Tan  
Dark Graphite

## RANGER Dealer-Installed Accessories



**Wraparound Aero Hood/Bug Deflector** is constructed of virtually unbreakable G.E. Lexan.®



**All-Weather Floor Mats** feature a molded grid pattern to collect water, slush, mud and dirt.



**Molded Running Boards** reduce step height and add a customized look.

**Tubular Pickup Box Rails** add function and style to your Ranger.



**Bed-Mount Bike Carrier Rack** allows you to haul bikes securely in the truck bed.

**Soft Tonneau Cover** snaps to the rail system for quick attachment.

Note: Your Ford Dealer can show you other quality Ranger accessories.

### Roadside Assistance

Every new Ford includes the assurance of a 24-hour emergency Roadside Assistance Program provided during the 3-year/36,000-mile limited warranty period. Ask your Ford Dealer for complete details on this program which includes such services as fuel delivery, tire change, jump start, or even help when you're locked out of your vehicle.

### New Vehicle Limited Warranty

Under the New Vehicle Limited Warranty, you receive bumper-to-bumper coverage for 3 years/36,000 miles with no deductible. You also receive corrosion perforation coverage for five years with unlimited mileage and no deductible. Ask your Ford Dealer for a copy of the warranty.

### Quality Care

The people who know your vehicle best. The parts designed for it. A service department that understands your needs and respects your time. That's what Quality Care is all about.

Competitive comparisons based on published 1999 competitive data.

**fordforce**  
COMMUNITY ACTION TEAM

Bettering the communities in which we do business is the goal of the Ford Force. We're organized, mobilized and coming to a community near you. Join us.



Visit our website at [www.fordvehicles.com](http://www.fordvehicles.com)