

FordKuga

Feel the difference





0.965237 of a millimetre

That's the thickness of a clay shaving. And to our designers it can make all the difference, as they hone and refine their clay prototype until they find the perfect expression of energy in motion.

The result is what we call Ford kinetic Design and we're passionate about it.

Bold, beautiful lines that you can't help falling in love with.



Actual size.



You either have it, or you don't

A quality that's hard to define, but instantly recognisable.





It brings you together

Who can defy the laws of attraction?





It sets you apart

Your outer success is a reflection of your inner values.





Some admire your choices. Perhaps others secretly envy them.





Power converter
Provides direct power for laptops and all your essential gadgets. (Option)



The new Ford Kuga is packed with smart technology. You'll find yourself smiling as it lets you do things faster, more effectively and with style.

That's clever



Ford Power
Power button replaces key. A standard feature on the Ford Kuga – just press and go.

Capless refuelling
No dirty fuel caps to touch. Plus a unique safeguard ensures nobody can accidentally fill up with the wrong fuel.



Mini tailgate
When you only have a small load to put in or get out, open the mini tailgate – it's quicker and more convenient.



Rear-view camera

Go into reverse and the rear-view camera comes on in the navigation display, allowing you to see objects behind your car for easy manoeuvring. (To be introduced during 2008. Please see your dealer for details)



The Ford Kuga possesses the renowned driving quality you would expect from the latest generation of Ford cars. Its Control Blade independent rear suspension delivers an on-road experience that is second to none in its class. Its off-road capability is equally impressive. The intelligent all-wheel drive system adjusts automatically to give you optimum control in all conditions.



That Ford feeling



Intelligent all-wheel drive

Tested in the harsh conditions of a Swedish winter, the Ford Kuga's intelligent all-wheel drive system uses proven Haldex 3 technology to react instantly to a change in road conditions. Traction is maintained by automatically applying power to the wheels that need it most, ensuring you stay in control whatever the road throws at you.

Driver-focused

Carefully positioned controls feel like a natural extension of the driving experience.

7" Premium nav touchscreen

Touch the colour screen for simple navigation or to control the audio and air conditioning. (Option)





The attention to detail which has been lavished on the Ford Kuga is immediately evident, from the exterior finish to the quality of the interior. Ford has engineered every single component for dependability, safety and strength with one objective clearly in mind; quality that's built to last.

Precision built with the future in mind



Brakes built to perform

The Ford Kuga's braking system is electronically tuned to meet the demands of on- and off-road driving conditions. Several technologies work in unison, such as ABS with Electronic Brake-force Distribution which balances the braking force across all wheels for safe, stable braking. And there's Emergency Brake Assist, which delivers extra brake power when you need it most.

Bi-Xenon Front Lighting System

With a special jewel-like design, these headlights not only make sure you're seen by other drivers but also illuminate any hazards more clearly than conventional headlights. (Option, also available as part of Titanium X Pack)



Safety features

Ford's Intelligent Protection System comes as standard on the Ford Kuga. It monitors the readiness of its comprehensive airbag systems as well as its Electronic Stability Programme, Traction Control System and Emergency Brake Assist.



The Ford Kuga Zetec brings you a blend of stunning design, outstanding driving quality and sheer capability unmatched in its class, plus a generous level of specification.

Features

- Intelligent All Wheel Drive
- 17" 5x2-spoke alloy wheels
- Keyless start with Ford Power button
- Manual Air Conditioning
- Quickclear heated windscreen
- Ford radio/CD with six speakers and remote audio controls
- Mini Tailgate
- Thatcham Category 1 Alarm
- Leather steering wheel
- Sports front seats
- Trip computer
- Power heated door mirrors with built-in indicator
- Front fog lights
- Portable audio device connector
- Front and rear electric windows
- Global opening and closing
- Remote control door entry
- Driver's seat lumbar adjust
- Driver's seat manual height adjust
- One-touch opening tonneau cover
- Front and rear curtain airbags
- ISOFIX provision



Power heated door mirrors
With an integrated side indicator and puddle light. (Standard)



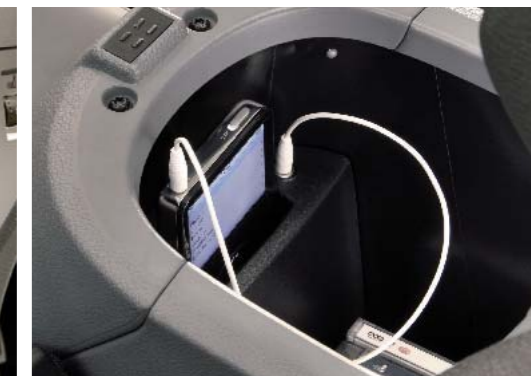
Ford Power button
No key required. Just press and drive. (Standard)



Manual air conditioning
Easy controls for fast cooling. (Standard)



MP3 connection
Play music directly from your MP3 player through the Ford Kuga's stereo. (Standard)





Get yourself behind the wheel of the Ford Kuga Titanium and you're surrounded by contemporary luxury and technical innovation.

Additional to Zetec

- Partial leather trim
- Dual Electronic Automatic Temperature Control (DEATC)
- Sony Audio System
- Cruise control
- Blue-tinted glass
- Leather gear knob
- Automatic rain-sensing wipers
- Automatic headlight control
- Auto-dimming rear-view mirror
- Rear seat folding centre armrest
- Footwell lights
- Passenger seat lumbar adjust
- Passenger seat manual height adjust
- Front seatback trays
- Front carpet mats

Blue-tinted glass
Exclusive to the Ford Kuga Titanium. (Standard)

Cruise control
With fingertip controls. (Standard)

Rain-sensing wipers
Come on automatically when the system senses rain. (Standard)

17" alloy wheels
(Standard)

Leather gear knob
A touch of luxury every time you change gear. (Standard)

Auto-dimming rear-view mirror
A sensor detects harsh lights behind you and dims the mirror. (Standard)





Wheel design

We've reinvented the wheel (almost). New designs have been specially developed to enhance the powerful design of the Ford Kuga.

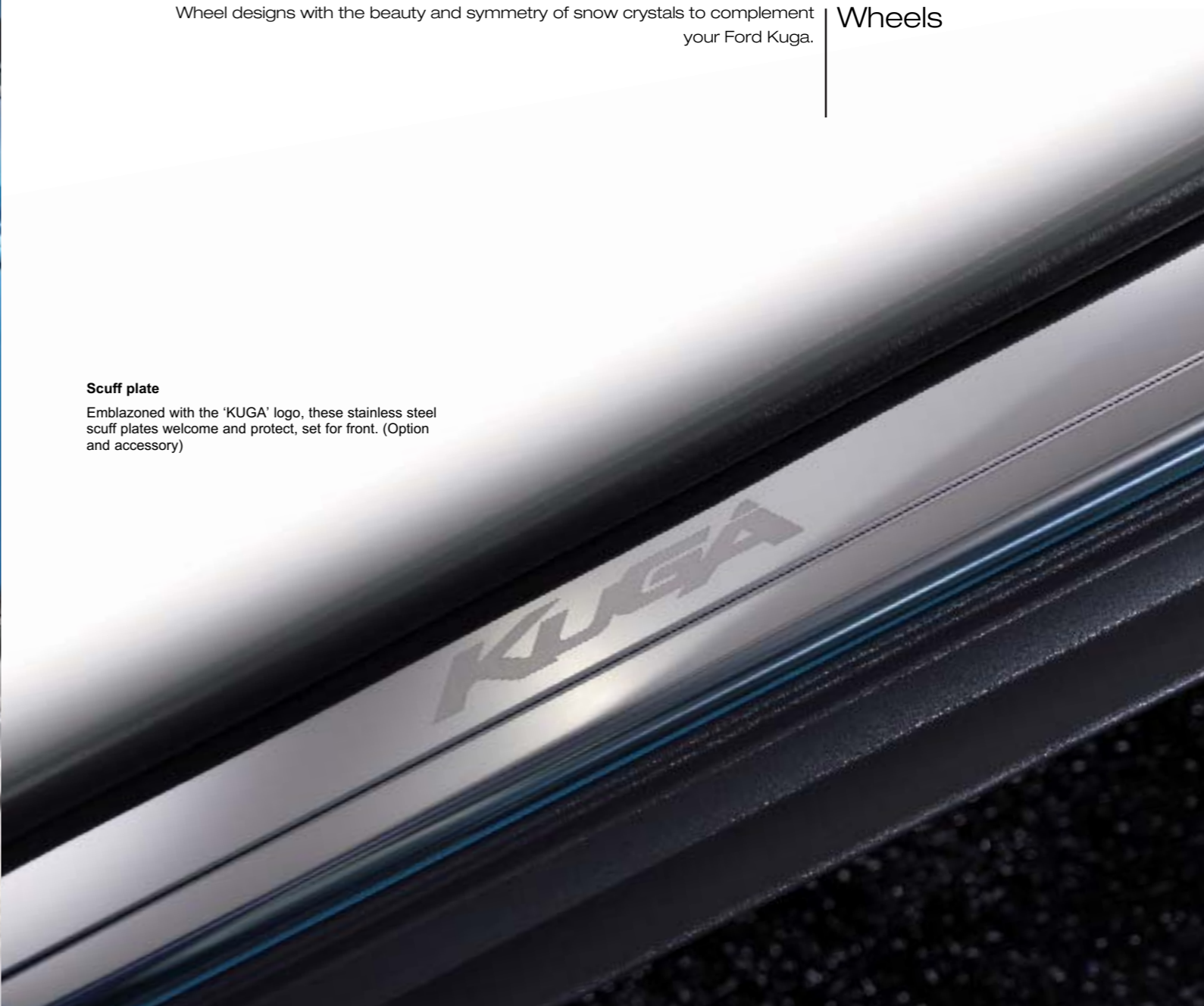


Wheel designs with the beauty and symmetry of snow crystals to complement your Ford Kuga.

Wheels

Scuff plate

Emblazoned with the 'KUGA' logo, these stainless steel scuff plates welcome and protect, set for front. (Option and accessory)



Steel – 17", 6-spoke wheel covers, 235/55 tyres. (Not available in the UK)

Alloy wheel – 7.5x17", 5x2-spoke U-design, 235/55 tyres (Standard on Zetec).

Alloy wheel – 7.5x17", 5x2-spoke, 235/55 tyres. (Standard on Titanium)

Alloy wheel – 7.5x18", 5-spoke, 235/50 tyres (Option and dealer fit accessory)
Only available on Zetec as part of Appearance Pack

Alloy wheel – 8.0x19", 5-spoke, 235/45 tyres (Option on Titanium and dealer fit accessory)





Sony DAB audio systems

Sony DAB audio systems provide improved reception and sound quality, simple easy-to-use tuning and access to an extensive range of radio stations. (See specifications table for availability)

Keyless Entry

Lock and unlock your Ford Kuga without a conventional key (Option)

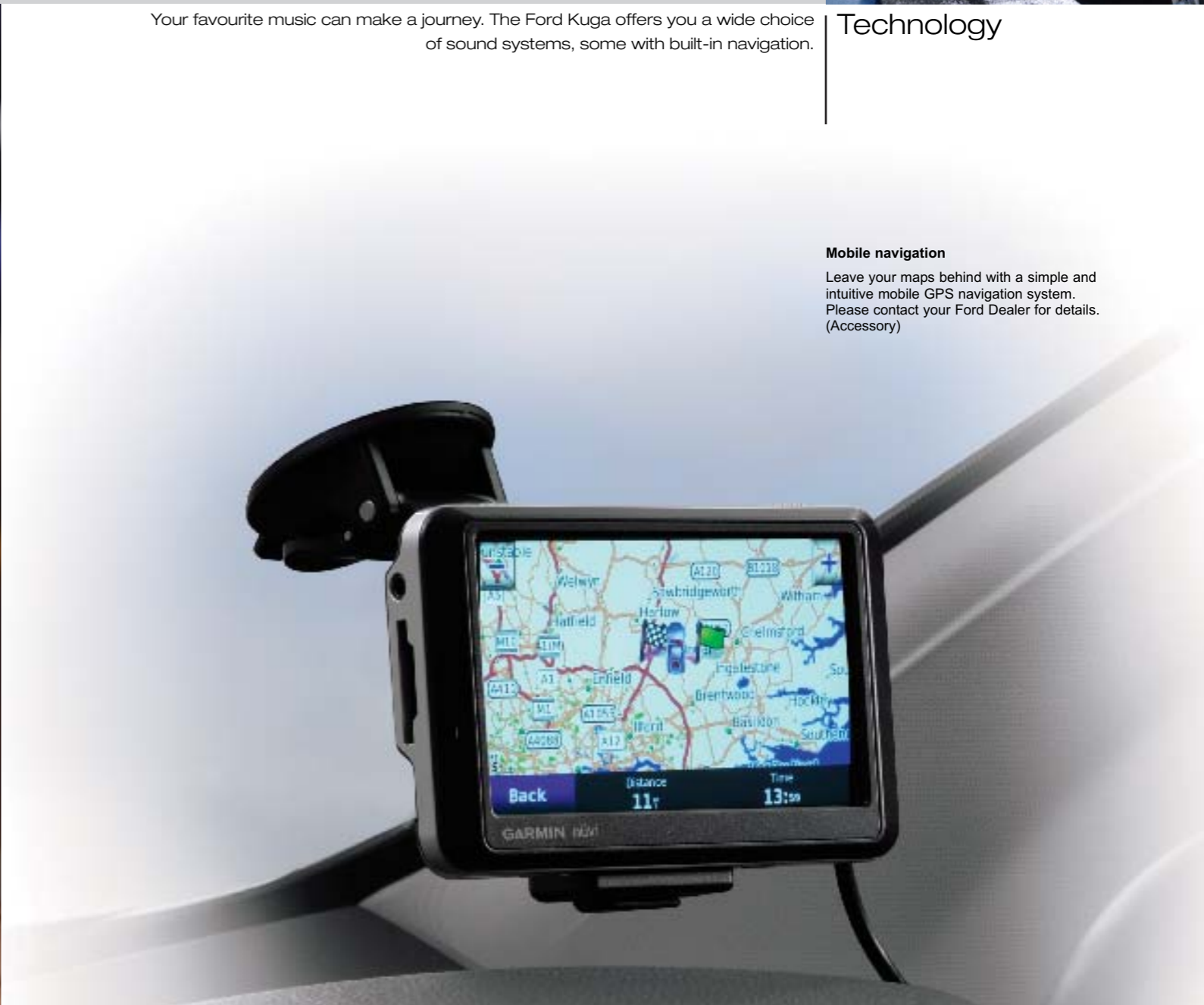


Your favourite music can make a journey. The Ford Kuga offers you a wide choice of sound systems, some with built-in navigation.

Technology

Mobile navigation

Leave your maps behind with a simple and intuitive mobile GPS navigation system. Please contact your Ford Dealer for details. (Accessory)



Becker Traffic Pro

Superior sound and navigation for most European countries. Features TMC traffic announcements. Plays MP3. (Accessory)

Advanced navigation system

CD/SDCard based navigation system incorporating stereo radio/CD with 5" colour display which allows simultaneous audio and navigation. (Option on Zetec)

Premium navigation system

DVD based navigation system incorporating 7" colour touchscreen which operates audio system, climate and navigation. (Option)



Thule 'Expedition' carrier basket
 A versatile basket platform for a variety of loads.
 Made of lightweight, robust aluminium. (Accessory)



The Ford Kuga's generous storage capacity can be expanded with a range of transport accessories.

Transportation



Britax Römer child seat
 Various seats available for all ages – also available with ISOFIX. Removable and washable cover. (Accessory)



Mont Blanc 'Barracuda' bike carrier
 Specially designed to carry modern bikes with frames up to 80 mm in diameter. Also features integral locks to keep bikes safe and secure. (Accessory)

Thule ski and snowboard carrier
 Lockable carrier used for your precious ski gear. (Accessory)



Aluminium roof rails
 Enhance versatility and styling. (Option and accessory)

Thule roof box 'Pacific'
 Available in various sizes. (Accessory)



Thule sailboard carrier
 Developed and tested by surfers for surfers. Holds one board and two masts. (Accessory)



Thule 'Ranger 90' foldable roof box
 A waterproof soft box that is easy to mount, load and unload. Folds down compactly when not in use. (Accessory)



Lockable crossbars
 Made of solid aluminium, these bars are the base for all attachments such as roof boxes, bike carriers, ski racks, etc. (Accessory)



Waeco coolbox
 High-performance 35-litre capacity box cools down to a minimum of 1°C. Integrated 230V AC connector. (Accessory)

Detachable tow bar
 Also available as fixed version. (Option and accessory)



Loadspace liner
 Extra solid liner with 100 mm lip height, ideal for transporting wet or dirty items. (Accessory)

Panoramic roof

Brings more light and a feeling of extra space to the interior. Includes two sunblinds and infrared reflective coating. (Option, also available as part of Titanium X Pack)



Add that final touch of luxury, comfort and convenience from a selection of premium designed features.

Personalisation



Power-fold door mirrors

Door mirrors can retract out of harm's way when parked. Also useful when squeezing through tight spaces. Includes built-in puddle lights. (Option as part of Convenience Packs)

Bluetooth® voice control and USB connector for MP3

Connects to the centre console and offers USB port, auxiliary jack and MP3 connection plus Bluetooth® voice control. When not in use, it can be hidden away in the stowage box. (Option)

Parking distance sensors

Audible warning helps you judge distance between your car and an obstacle. (Option, also available as part of Convenience Packs)



Premium velour mats

Perfectly complements your chosen interior, with nubuck surround and aluminium-effect 'KUGA' logo. Driver's mat is fixed to prevent slippage. (Accessory)



We are all beginning to understand the impact that mobility is having on climate change. While we can't change things overnight, we are working very hard to find solutions.

Making a difference

On Ford Focus, Ford C-MAX, Ford Mondeo, Ford S-MAX and Ford Galaxy, our optional Flexifuel engine, fuelled by E85, is achieving emission reductions of around 30% to 80%** compared to conventional petrol engines. E85 is a mixture of 85% plant-derived ethanol and 15% petrol, but these models can run on any mixture of the two – even 100% petrol.

On Ford Focus and Ford Mondeo, new low emission diesel ECOnetic derivatives are now available. Ford Focus ECOnetic delivers more than 65 mpg, emitting just 115 g/km of CO₂ and Ford Mondeo ECOnetic delivers more than 53 mpg on 5-door, emitting 139 g/km of CO₂.

Protecting the future

Using our Product Sustainability Index, a design for sustainability management tool, we are addressing the environmental, social and economic impacts of our vehicles from the earliest stages of their development*.

We are working on a wide range of vehicle technologies from biofuels to hybrids and clean diesels, and in the long term to hydrogen fuel-cell technology with the potential for near zero CO₂ emissions.

Improving our manufacturing facilities

Elsewhere, we are working to minimise the impact of our facilities on the environment, for example by pioneering on-site generation of electricity from sun and wind.

Breathe easier

The allergy-tested interiors of Ford Ka, Ford Focus, Ford C-MAX, Ford Kuga, Ford Mondeo, Ford S-MAX and Ford Galaxy models were the first worldwide to receive the approval of the independent German TÜV organisation, and are endorsed by the British Allergy Foundation.

Recycling for good

In the interests of sustainability, many of our components contain recycled and renewable content. All Ford vehicles are at least 85% recyclable and 95% recoverable in accordance with ISO 22628. We offer free take-back for qualifying vehicles at the end of their lives. All our take-back points are fully licensed and must also meet additional Ford quality standards for the professional receipt, treatment and recovery of end-of-life vehicles.

This brochure has been produced on paper based on fibres from sustainable forestry, using a 100% chlorine-free (TCF) bleaching process.

*For more about this topic, see www.ford.com

**Dependent on feedstock used and production process. (Source: EUCAR CONCAWE study.) Ford supports the sustainable production of biofuels.

Our range of finance, insurance, service and assistance options is designed with just one thing in mind – making life easy for you.

Ford Credit

Your local Ford Dealer can offer simple, plain language advice on the various ways of financing your purchase. They can help you complete an application and get a decision, usually within 15 minutes. For further details, visit www.ford.co.uk or contact your Ford Dealer.

Ford Options is the flexible plan if you want to change your car more often.

Ford Acquire is a straightforward plan for private customers and business users who want to own their cars outright.

Ford Business Partner provides dedicated advice for businesses that need a complete Contract Hire solution.

Ford Insure is a wide range of vehicle insurance products. When you purchase a Ford from a Ford Dealer, call us for a no-obligation quotation and we'll give you 7 days' free Driveaway cover*.

*Ford Insure may decline to quote in some circumstances, meaning that the 7 days' Driveaway cannot be given. Ford Insure is underwritten and administered by Norwich Union Insurance Limited. Registered in England No. 99122. Registered Office: 8 Surrey Street, Norwich NR1 3NG. Authorised and regulated by the Financial Services Authority. Quotations are valid for 60 days. Offer can be withdrawn at any time.

Services

Ford Protect

Your new Ford is protected by a 3-year/60,000-mile Ford Protect Classic Plan Warranty, and comes with Ford Assistance roadside cover throughout the UK and Europe for 1 year. You can also upgrade to a Ford Protect Premium Plan, giving you the option of scheduled servicing and extended Ford Assistance.

Ford Service

Like any vehicle, your new Ford needs servicing regularly to keep it in the best condition and to maintain its value. The Ford authorised repairer network is independently quality checked to ensure the highest standards of workmanship are maintained. Ford has the largest repairer network in the UK, and uses Ford-trained technicians, Ford-specific tools and the latest computerised diagnostic equipment specifically for your Ford.

Ford Accident Repair Centres

Should your Ford require accident repair, an approved Ford Accident Repair Centre is the best place to return your vehicle to its pre-accident condition. Repairers displaying the Ford Accident Repair Centre sign meet the rigorous customer service, technical and quality standards demanded by Ford. Ford trained technicians, the latest repair equipment and the use of original parts mean that the future safety and value of your vehicle are assured.

Contacts

Ford Customer Relationship Centre

In the unlikely event that your Ford Dealer can't help you or if you need to speak to us directly, call 0845 841 1111 at local rates.

Ford Rental – local service nationwide

Car and van rental from our latest model range. Contact your local Ford Dealer for more information.

Talkback – the company car drivers' club

This is your club for extended test drives, special events, and advice on tax and buying issues. Join free, even if you don't drive a Ford, on www.talkbackclub.com or call 0845 605 55 66.

Ford Mobility

Our MAGIC care centre provides free information on all motoring and mobility issues, including special offers for HRDLA and Motability recipients. Call free on 0800 240 241.

Exterior equipment

	Zetec	Titanium
Design Features		
Door mirrors – Body colour housing, heated, electric operation, integrated side indicator	●	●
Door mirrors – Puddle lights	●	●
Door mirrors – Electrically foldable	□	□
Front upper grille – Chrome surround	●	●
Front lower grille – Moondust Silver colour surround	●	●
Front fog lights	●	●
Rear privacy glass	□	□
Blue tinted glass in lieu of standard tinted glass	-	●
Rear spoiler – Body colour	●	●
Roof rails – Aluminium finish	○/□	○/□
Detachable towbar (includes Trailer Stability Function)	○	○
Wheels		
Alloy – 17"x7½", 5x2-spoke, 235/55 tyres	●	●
Alloy – 17"x7½", 5x2-spoke, 235/55 runflat tyres (includes Deflation Detection System (DDS). Availability TBA.)*	○	○
Alloy – 18"x7½", 5-spoke, 235/50 tyres	□	○
Alloy – 19"x8", 5x2-spoke, 235/45 tyres	-	○
Spare – Mini steel	●	●
Locking wheels nuts	●	●

Exterior equipment

	Zetec	Titanium
Convenience Features		
Ford Easy Fuel capless refuelling system	●	●
Headlights – Automatic on/off (includes automatic wipers with rain sensor and auto-dimming rear-view mirror)	○*	●
Headlights – Bi-xenon, with automatic levelling and jet wash	○	○/□
Headlights – "Guide me home" delay	●	●
Panoramic roof – Fixed	○	○/□
Parking distance sensors – Front and rear	○/□	○/□
Tailgate wash/wipe	●	●
Wipers – Standard with 6-speed interval settings	●	-
Quickclear heated windshield, with heated windshield washer jets	●	●
Windshield – Solar reflect heat reflecting (includes auto headlights/wipers/mirror on Zetec - see above)	○	○/□
Option Packs		
Zetec Convenience Pack – Cruise control, front and rear parking distance sensors, and electrically foldable door mirrors	○	-
Titanium Convenience Pack – Keyless entry, front and rear parking distance sensors, and electrically foldable door mirrors	-	○
Zetec Appearance Pack – 18" 5-spoke alloy wheels, aluminium finish roof rails and privacy glass	○	-
Titanium Appearance Pack – Privacy glass and aluminium finish roof rails	-	○
Titanium X Pack – Full leather trim, heated front seats with variable control, driver's 6-way electric adjustment, panoramic roof, Bi-Xenon headlights, and solar reflect windshield	-	○

● = Standard, ○ = Optional, at extra cost, □ = Part of option pack, at extra cost. * Included when solar reflect windshield is ordered on Zetec. *Please note: Titanium vehicles ordered with runflat tyres will always be specified with the Zetec design 17" Alloy.

Interior equipment

	Zetec	Titanium
Design Features		
Door lever – Aluminium	●	●
Floor mats – Front, carpet	–	●
Floor mats – Front and rear, velour	○	○
Gear knob – Leather	–	●
Scuff plates – Front, Moondust Silver colour	●	●
Scuff plates – Front, aluminium with aluminium 'Kuga' logo	○	○
Scuff plates – Front, brushed stainless steel, illuminated with recessed 'Kuga' logo	○	○
Steering wheel – 4-spoke, leather trimmed with silver accents	●	●
Steering column – Reach and rake adjustable	●	●
Audio and Communication Systems		
Ford 6000 Radio/CD – 6 speakers, remote audio controls	●	–
Sony Radio/CD – 8 premium speakers, remote audio controls, MP3 compatible (will include DAB during Q3 2008)	○	●
Sony Radio/6-disc CD with DAB – 8 premium speakers, remote audio controls, MP3 compatible (available during Q3 2008)	–	○
Advanced Navigation System with Radio/CD – 5" colour display, 6 speakers, remote audio controls, SD memory card slot for data (eg. music) exchange; navigation data on SD card and CD	○	–
Premium Navigation System with Radio/CD – 7" colour touch screen, 8 premium speakers, remote audio controls, MP3 compatible, touchscreen allows control of radio/CD, navigation system, and dual electronic air conditioning; includes DEATC air conditioning and heated front seats; navigation data on DVD	○	○
Portable audio device connector	●	●
Bluetooth® Hands Free Phone and Voice Control System for the command of audio system, air conditioning and mobile phone	○	○
USB/iPod connectivity port (only with Bluetooth® Hands Free Phone and Voice Control System in conjunction with Sony or Navigation systems)	○	○
Climate Control		
Air conditioning – Manual control	●	–
Air conditioning – Dual Electronic Automatic Temperature Control (DEATC)	○	●

Interior equipment

	Zetec	Titanium
Convenience Features		
'Ford Power' engine start/stop push button	●	●
Cruise control	□	●
Accessory power socket (12V)	●	●
Cigar lighter (in lieu of 12V power socket) and cup holder mounted ashtray	○	○
Centre console – Premium, with sliding armrest, additional 12V power socket and large stowage bin	●	●
Power converter – 230V pulse charge type, limited to 150W	○	○
Courtesy light – For front passengers, overhead with theatre-style dimming; ambient lighting	●	●
Courtesy light – Footwell area	–	●
Courtesy light – Front and rear reading lights	●	●
Stowage pockets – Front seat backs	●	●
Stowage unit – Located in upper instrument panel	●	●
Variable dimming of instrument cluster and radio screen display	●	●
Windows – Electric front and rear with one-touch lowering/closing, 'bounce-back' sensor and global opening/closing	●	●
Seats		
Front seats – Sports-style, fabric trim	●	–
Front seats – Sports-style, partial leather trim	–	●
Front seats – Comfort-style (only if Titanium X Pack is specified)	–	□
Front seat – Driver's manual lumbar support adjustment	●	●
Front seat – Driver's manual height and fore/aft adjustment	●	●
Front seat – Driver's electric height, fore/aft and backrest angle adjustment (only if Titanium X Pack is specified)	–	□
Front seat – Passenger's manual fore/aft adjustment	●	–
Front seat – Passenger's manual height and fore/aft adjustment (includes manual lumbar support)	–	●
Front seats – Folding seat back trays	–	●
Front seats – Heated cushion and seatback, with 5 variable positions (also available with Titanium X Pack)	○	○/□
Seats – Leather trimmed (only available with Titanium X Pack)	–	□
Rear seat – 60/40 split back and cushion	●	●
Rear seat – Folding centre armrest, with two integrated cup holders and flip-up stowage	–	●
Loadspace		
Accessory power socket (12V) in luggage compartment	●	●
Tie-down hooks	●	●
Tonneau cover - one touch opening	●	●

● = Standard, ○ = Optional, at extra cost, □ = Part of option pack, at extra cost.

The Bluetooth® word mark and logos are owned by the Bluetooth SIG, Inc. and any use of such marks by Ford Motor Company Limited and its associated companies is under licence. Other trademarks and trade names are those of their respective owners.

Safety and security

	Zetec	Titanium
Safety		
Intelligent Protection System (IPS)	●	●
Anti-lock brakes (ABS) with Electronic Brake-force Distribution (EBD)	●	●
Electronic Stability Programme (ESP) with Traction Assist (includes Emergency Brake Assist (EBA))	●	●
Trailer Stability Function (only when optional Ford detachable tow bar is specified)	●+	●+
Hazard Warning Light – Automatic activation of all turn indicators when emergency braking is applied	●	●
Airbags – Driver's and front passenger's*	●	●
Airbags – Front side impact	●	●
Airbags – Front and rear curtain	●	●
Airbags – Front passenger's de-activation switch (Dealer-fit option)	○	○
Seats – ISOFIX mounting provision for child seats (outer seats only)	●	●
Deflation Detection System (DDS)	○	○
Security		
Remote central double locking	●	●
CAT 1 Thatcham approved perimeter and volume sensing alarm	●	●
Keyless Entry System – Full hands-free vehicle entry system	○	○/□

● = Standard, ○ = Optional, at extra cost, ●+ = Standard if optional Ford detachable tow bar is specified.

*Note: A child seat should never be placed in the front passenger seat when the Ford vehicle is equipped with an operational front passenger's airbag. The safest place for children is properly restrained on the rear seat.

Mechanical Features

	Zetec	Titanium
Steering		
Electric Hydraulic Power-Assisted Steering (EHPAS)	●	●
Suspension		
Front – Independent with MacPherson struts and anti-roll bar	●	●
Rear – Independent Control Blade multi-link system and anti-roll bar	●	●

● = Standard.

Fuel and Performance data for 2.0 Duratorq TDCi (DPF) 6-speed manual AWD

Maximum Power PS (kW)	Torque Nm (Nm with overboost)	CO ₂ emissions (g/km)**	Fuel consumption in L/100 km (mpg)**			Performance*			Basic Kerbweight (kg)	Gross Vehicle Mass (kg)	Max. towable Mass (kg)
			Urban	Extra Urban	Combined	Max. speed (mph)	0-62 mph (secs)	31-62 mph* (secs)			
136 (100)	320 (340)	169	8.1 (34.9)	5.4 (52.3)	6.4 (44.1)	112	10.7	9.4	1613	2130	2100

*In 4th gear. **Ford test figures. **All CO₂ emissions figures in g/km and fuel consumption figures in L/100 km are tested in accordance with 80/1268/EEC as amended. The CO₂ emissions and fuel consumption test figures shown in the chart do not express or imply any guarantee of the emissions or fuel consumption of a car of the class in question. All the figures are based on tests conducted on vehicles with Core equipment level and with standard wheels and tyres; optional or accessory wheels and tyres may have an effect on the emissions and fuel consumption of a vehicle. **Note** All vehicles are 6-speed manual. All petrol engines are equipped with a catalytic converter. All engines are Stage IV. **DPF** = Diesel Particulate Filter. **Basic kerbweight** includes driver (75kg), lubricants and filled fuel tank (90%) **Towing limits** quoted represent the maximum towing ability of the vehicle at its Gross Vehicle Mass to restart on a 12 per cent gradient at sea level. The performance and economy of all models will be reduced when used for towing. **Max Nose weight** is 105kg

Dimensions

Overall length (mm)	4443
Overall width with / without mirrors (mm)	2128 / 1842
Overall height (unladen) (with roof rails) (mm)	1710
Turning circle – kerb to kerb (m)	11.5
Luggage Capacity (litres)*	
5-seat mode (laden to package tray) (with mini steel spare)	360
2-seat mode (laden to roof) (with mini steel spare)	1355
Fuel Tank Capacity (litres)	
Diesel	56.0

*Measured using the GCIE method. Dimensions may vary dependent on the model and equipment fitted.



Colour and trim



Solid body colour

1. Frozen White

Metallic body colours*

2. Avalon
3. Chill
4. Electric White
5. Kelp
6. Moondust Silver
7. Panther Black
8. Sea Grey
9. Tango
10. Vision

*Metallic body colours are options at extra cost.



Colour and trim

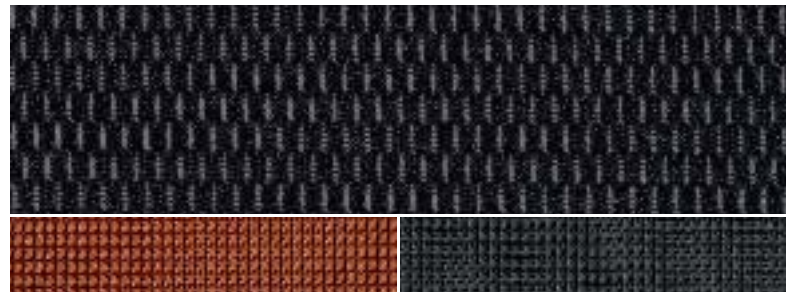
Model	Zetec		Titanium	
Seat facing trim	Rack	Rack	Airfield/partial Napoli leather	Napoli leather*
Seat facing trim colour	Generic Silver	Generic Silver	Ebony	Ebony
Seat back stripe colour	Generic Blue	Generic Orange	Generic Silver	Generic Silver
Door handle colour	Lagoon Blue	Generic Orange	Pontos	Pontos
Gearshift bezel colour	Triton Silver	Triton Silver	Triton Silver	Triton Silver
H bezel colour	Lagoon Blue	Generic Orange	Pontos	Pontos
Solid body colours				
Frozen White	S	S	E	E
Metallic body colours*				
Avalon	S	–	E	E
Chill	–	S	E	E
Electric White	S	S	E	E
Kelp	–	–	E	E
Moondust Silver	S	S	E	E
Panther Black	S	S	E	E
Sea Grey	–	S	E	E
Tango	–	–	E	E
Vision	S	–	E	E

Seat trim colour key: S – Silver, E – Ebony.

*Metallic paint is optional, at extra cost. Leather Trim is optional as part of the Titanium X Pack, at extra cost.



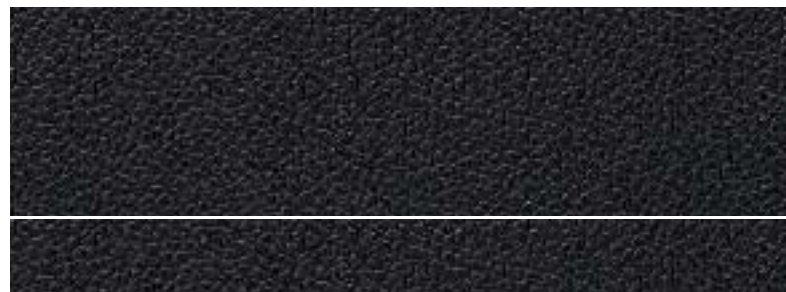
Seat facing: Rack in Generic Silver
Stripe: Gecko in Generic Blue
Bolster: Gecko in Anthracite



Seat facing: Rack in Generic Silver
Stripe: Gecko in Generic Orange
Bolster: Gecko in Anthracite



Seat facing: Airfield in Ebony
Stripe: Airfield in Generic Silver
Bolster: Napoli leather* in Ebony



Seat facing: Napoli leather* in Ebony
Bolster: Napoli leather* in Ebony

*Leather trim is optional at extra cost.

Illustrations, descriptions and specifications. This brochure was correct at the time of going to print. However, Ford policy is one of continuous product development. The right is reserved to change specifications, colours and prices of the models and items illustrated and described in this publication at any time. For the latest details always consult your Ford Dealer. **Optional equipment.** Throughout this publication, wherever a feature is described as being an 'Option' or 'Optional Fitment/Pack', etc., you should assume that it will be at extra cost to the base vehicle, unless specifically stated to the contrary. All models and colour combinations are subject to availability. **Note.** Some images portrayed are of a pre-production model and/or are computer generated, therefore, the design/features on the final version of the vehicle may differ in various respects. In addition, some of the features shown on the vehicles may be optional. **Note.** This brochure contains both original Ford accessories as well as a range of carefully selected products from our suppliers, which are featured under their own brands. All supplier branded products are subject to warranty terms defined by the relevant suppliers and do not lie within the responsibility of Ford. **Note.** The Bluetooth® word mark and logos are owned by the Bluetooth SIG, Inc. and any use of such marks by Ford Motor Company is under licence. Other trademarks and trade names are those of their respective owners.

The Government fuel figures do not express or imply any guarantee of the fuel consumption of any particular car. The cars themselves have not been tested and there are inevitably differences between individual cars of the same model. In addition, a car may incorporate particular modifications. Furthermore, the driver's style and road and traffic conditions, as well as the extent to which the car has been driven and the standard of maintenance, will affect its fuel consumption. **Insurance groups** are only as recommended by the Association of British Insurers. You should always consult your insurance adviser for confirmation.



Allergy-tested interior All the materials used in the manufacture of the interior of the vehicles meet the strict requirements of the TÜV TOXPROOF Criteria Catalogue for Vehicle Interiors by the TÜV Produkt und Umwelt GmbH and are designed to minimise the risk of allergic reactions. With doors and windows closed, the interior materials selected – together with the integrated pollen filter – protect the passengers against most allergising particles from the outside air. At higher temperatures, the additional use of air conditioning is recommended.



BY APPOINTMENT TO HER MAJESTY THE QUEEN MOTOR VEHICLE MANUFACTURERS FORD MOTOR COMPANY LIMITED BRENTWOOD ESSEX



BY APPOINTMENT TO HER MAJESTY THE QUEEN MOTOR VEHICLE MANUFACTURERS FORD MOTOR COMPANY LIMITED BRENTWOOD ESSEX



Collect Nectar points at participating Ford Dealers now. So keep a look out for the latest Ford offers at www.ford.co.uk/nectar or call the Ford Information Service on 0845 7111 888. Calls are charged at national rate and may be recorded for training purposes.



Ford recommends BP.



Published by Ford Motor Company Limited, Brentwood, Essex, England.
Registered in England No. 235446.
FA 1533
BJN 304873. FoE H42E.
PN 879505/0708/36m/GBR en
July 2008.
© Ford Motor Company Limited.

www.ford.co.uk

