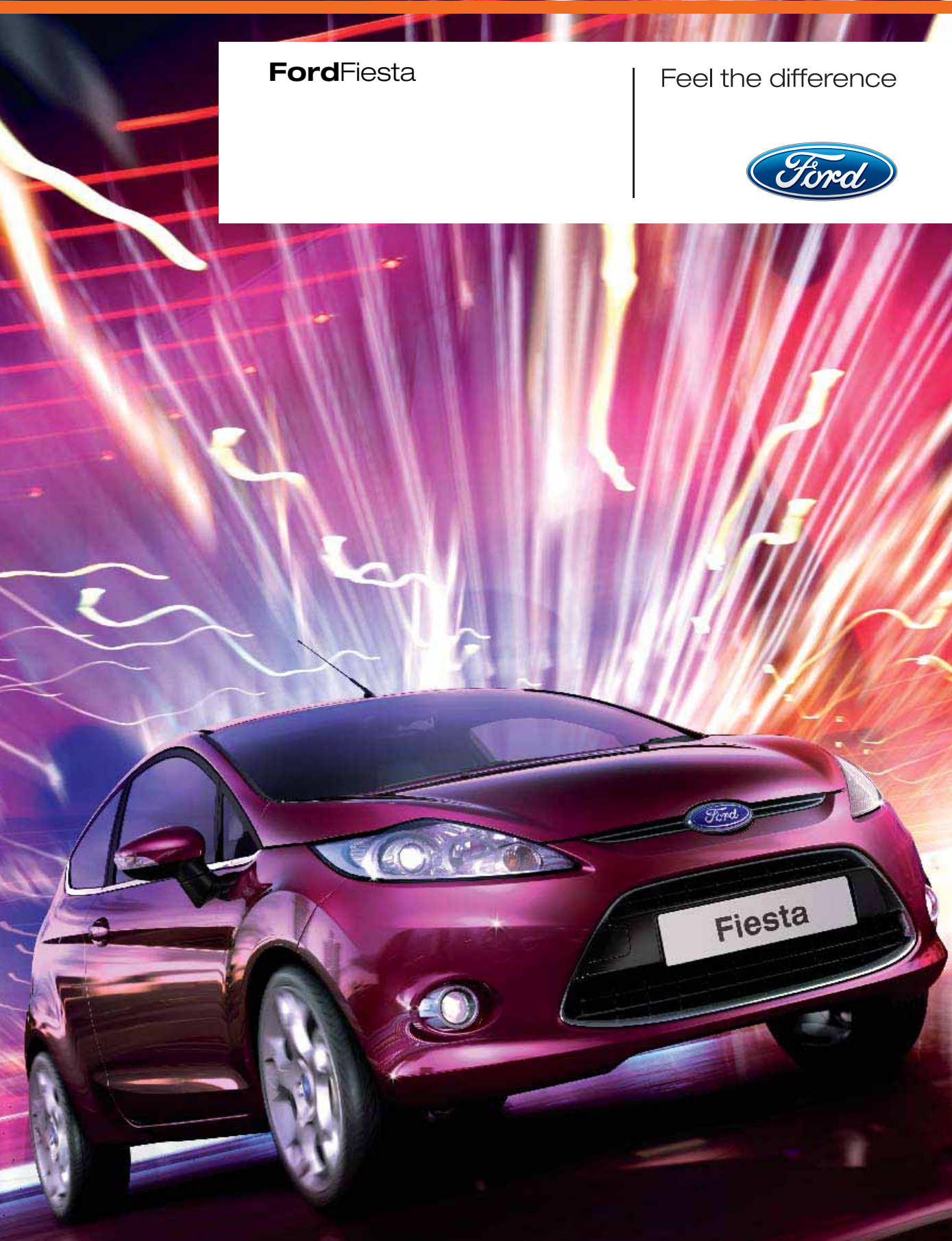


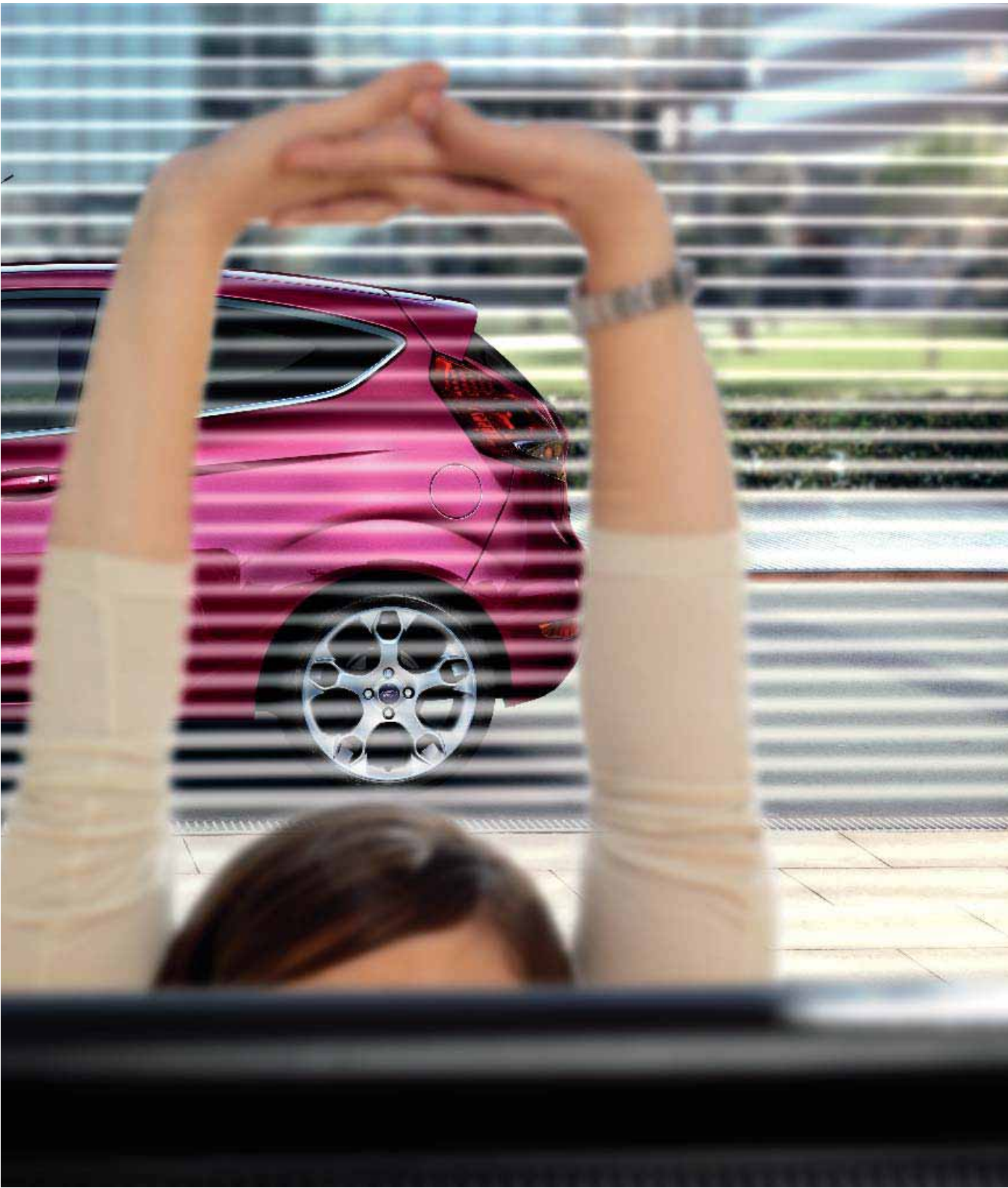
FordFiesta

Feel the difference





Nearly done. Then I'm out of here. Must take a moment to sort out this weekend.



Club's heaving. Everyone's here. Love this track. Love being here.



Just got a text. We're meeting up in half an hour. OK, let's go. I'll put the MP3 on shuffle...



A lovely lazy Sunday morning. Recharging my batteries. So I'm ready to go again...



Make it yours



17" 5-spoke alloy wheels
This season's must-have.
(Option and accessory)

Remote audio controls
Your hands on the wheel and
your MP3 on the right track.
(MP3 player not included)

Cruise control
Set your speed. Relax.
Enjoy the drive. (Standard)



It's a stereo...
with Bluetooth®, voice control,
USB and AUX for your MP3,
and a screen for your phone
and track info. (Options)

**Ford Key-Free
System**
Simply get in, power-up
and go. (Option)



Electrically-foldable door mirrors
Just the thing for squeezing into that
tight space. (Standard)

Titanium interior trim: choose between two colour schemes



Interior colour scheme

Upper: Soho
Lower: Syracuse
Centre stack: Stirling



Interior colour scheme

Upper: Fairland
Lower: Syracuse
Centre stack: Stirling



Seat trim and colour
Dots in Soho
Seat bolster trim and colour
Trudie New in Syracuse

*Leather trim optional at extra cost



Door trim and colour
Trudie New in Soho
Seat trim and colour
Napoli leather in Syracuse*
Seat bolster trim and colour
Napoli leather in Syracuse*
Door handle deco strips
Stirling



Seat trim and colour
Dots in Syracuse
Seat bolster trim and colour
Trudie New in Syracuse
Door trim and colour
Trudie New in Fairland
Door handle deco strips
Stirling



Seat trim and colour
Napoli leather in Syracuse*
Seat bolster trim and colour
Napoli leather in Syracuse*
Door trim and colour
Trudie New in Fairland
Door handle deco strips
Stirling

Exterior colours

Solid body colours

1 Colorado Red

Metallic body colours*

2 Spa
3 Avalon
4 Moondust Silver
5 Ocean
6 Squeeze
7 Sea Grey
8 Tango
9 Cedar
10 Panther Black
11 Morello
12 Vision
13 Hot Magenta



NY 2008.75 GBR en

Illustrations, descriptions and specifications. This brochure was correct at the time of going to print. However, Ford policy is one of continuous product development. The right is reserved to change specifications, colours and prices of the models and items illustrated and described in this publication at any time. For the latest details always consult your Ford Dealer. **Optional equipment.** Throughout this publication, wherever a feature is described as being an 'Option' or 'Optional Fitment/Pack', etc., you should assume that it will be at extra cost to the base vehicle, unless specifically stated to the contrary. All models and colour combinations are subject to availability. **Note.** Some images portrayed are of a pre-production model and/or are computer generated, therefore, the design/features on the final version of the vehicle may differ in various respects. In addition, some of the features shown on the vehicles may be optional. **Note.** This brochure contains both original Ford accessories as well as a range of carefully selected products from our suppliers, which are featured under their own brands. All supplier branded products are subject to warranty terms defined by the relevant suppliers and do not lie within the responsibility of Ford. **Note.** The Bluetooth® word mark and logos are owned by the Bluetooth SIG, Inc. and any use of such marks by Ford Motor Company is under licence. Other trademarks and trade names are those of their respective owners.

The Government fuel figures do not express or imply any guarantee of the fuel consumption of any particular car. The cars themselves have not been tested and there are inevitably differences between individual cars of the same model. In addition, a car may incorporate particular modifications. Furthermore, the driver's style and road and traffic conditions, as well as the extent to which the car has been driven and the standard of maintenance, will affect its fuel consumption. **Engine availability** Ford Fiesta is available with four petrol engines, 1.25 – 1.6 litres, 60 – 120 PS, fuel consumption 47.9 – 52.3 mpg, CO₂ 128 – 139 g/km; and two diesel engines, 1.4 – 1.6 litres, 68 – 90 PS, fuel consumption 67.3 mpg CO₂ 110 g/km. **Note** Exterior Model shown throughout is a Ford Fiesta Titanium 3-door with optional Hot Magenta metallic paint and optional Titanium X Pack both at extra cost. Interior Model shown is Titanium 3-door with optional Tech Pack at extra cost. For more information on Ford Fiesta model and engine availability, please contact your Ford Dealer or visit www.ford.co.uk

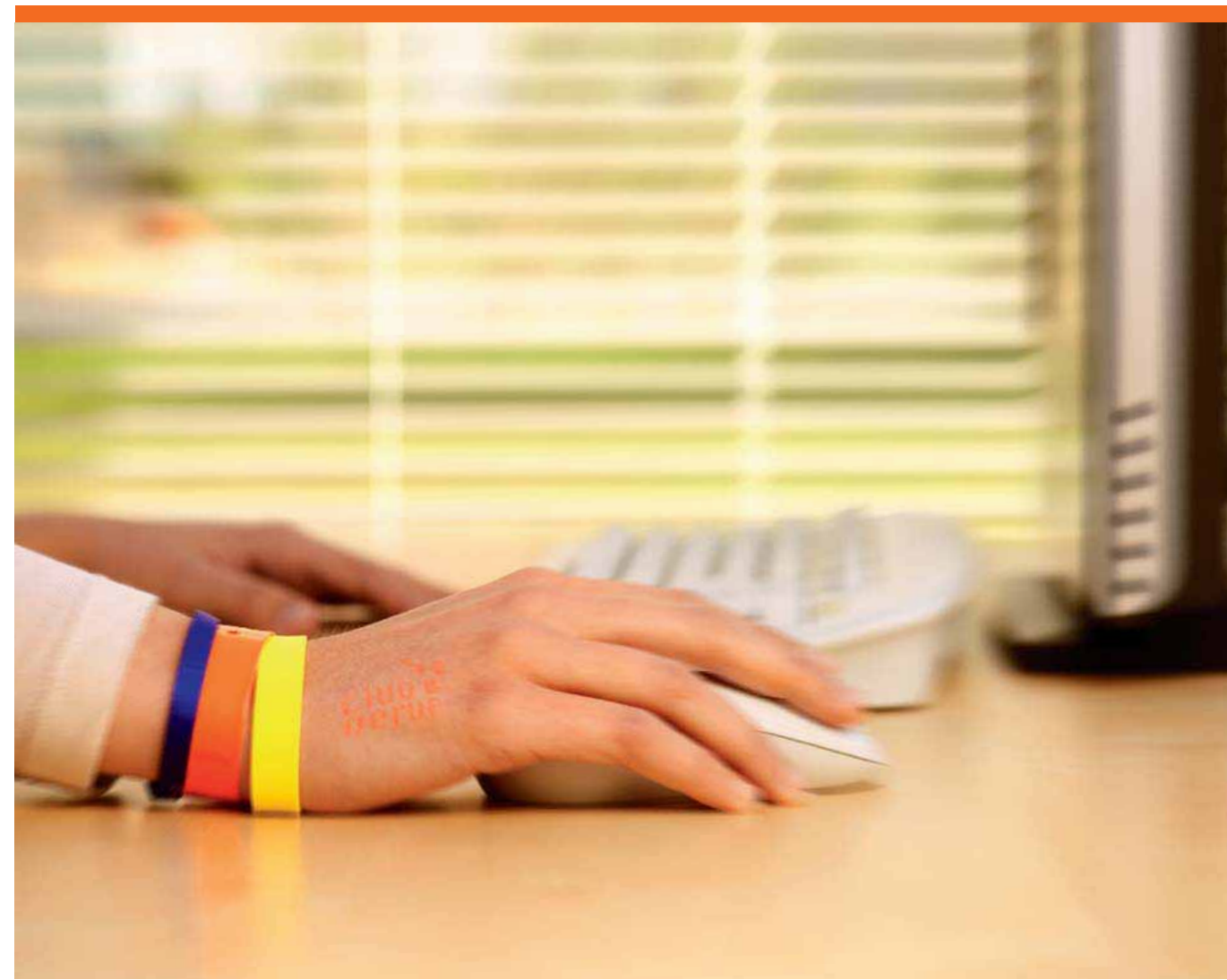


Ford recommends BP.



Published by Ford Motor Company Limited,
Brentwood, Essex, England.
Registered in England No. 235446.
BJN 304872.
PN 871504/0608/188.9m/GBR en.
June 2008.
© Ford Motor Company Limited.

www.ford.co.uk



*Metallic body colours are extra cost options.