

Feel the difference



Ford**S-MAX**

discover⁺



spontaneous⁺

When life gets busy, some people just slip into routine. While others enjoy every minute – taking every opportunity to live life to the full. It's not always about careful planning. It's your attitude to life that makes all the difference. Sometimes you just need to seize the day.

An expression of energy in
motion. Ford S-MAX is
designed to move you – even
when it's standing still.

sure⁺

Right to the last mile of
the longest journey, you'll
know this is a driver's car.
Because every detail has
been designed around you.

feel⁺



Beneath this sleek,
sophisticated design lies
a spacious and flexible
interior. No need to
compromise. It's time
to make your presence felt.

presence⁺

S-MAX

There's a big world out there
and it's all yours. Explore new
places or rediscover old ones.
Take the family or take some
time out for yourself.

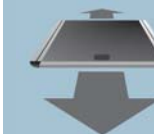
explore⁺



people⁺



A ski trip with friends, or a journey to the school gates. Whoever you bring, you will always have plenty of room.



Sliding load floor

The optional sliding load floor in lieu of third row seats allows for easier loading and unloading.

Space for... you decide

In the all new Ford S-MAX, even the seats can enjoy their independence. Thanks to the Ford FoldFlatSystem (FFS) each second and third row seat individually folds down flat to provide numerous passenger and luggage possibilities. And when it comes to storage, there are many more hidden treasures.

1. Stowage pockets - front seat backs

Items can be tucked away.

2. Underfloor stowage

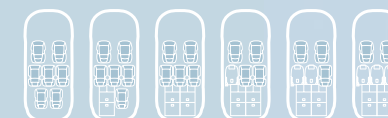
Even under your feet you will find extra storage space.

3. Sliding load floor (optional in lieu of third row seats)

For loads up to 200 kg (120 kg on rear edge).

Seating configurations

32 ways to arrange your seats. Endless ways to store your luggage.



Ford FoldFlatSystem (FFS)

Each individual rear seat can fold flat. Second row seats slide and tilt; third row seats tilt.



Life is precious. From driver and passenger airbags, front side airbags, curtain airbags to driver's knee airbag, every part of the Intelligent Protection System (IPS) protects every part of you. Anti-lock Braking (ABS) and Electronic Brakeforce Distribution (EBD) is also standard.

relax⁺

Runflat tyres

Keep driving – even after a puncture. Available as an option on selected models (at extra cost). Runflat tyres must be ordered with Tyre Pressure Monitoring System (TPMS) which will alert you in case of deflation and either ESP, Interactive Vehicle Dynamics Control (IVDC) with continuously controlled damping (CCD) or Adaptive Cruise Control (ACC) (all at extra cost).



Intelligent Protection System (IPS)

Beneath the steel safety cages lies a comprehensive airbag system, three-point seat belt pre-tensioners and collapsible steering column and pedals. All ready to spring into action in a fraction of a second.

Stay in control

Ford S-MAX technology helps you retain control, even when the unexpected occurs.

4. Adaptive Cruise Control (ACC) with Forward Alert (FA)

Adaptive Cruise Control (ACC) lets you set the pace – and automatically adjusts your speed if the car in front is travelling at a slower speed. Available as an option on selected models (at extra cost)

5. Forward Alert (FA)

Offers an audible and visual warning when there's a risk of colliding with the vehicle in front. At the same time, Emergency Brake Assist (EBA) prepares the brakes to facilitate full braking performance by increasing pressure within the brake system. Available as part of the ACC option (at extra cost)

6. Hill Launch Assist

After releasing the brake pedal when stationary, the system keeps the wheels braked, leaving you enough time to move your foot from the brake pedal to the accelerator without the car rolling backwards. Available as part of the Interactive Vehicle Dynamics Control (IVDC) with continuously controlled damping (CCD) or ACC option (both at extra cost)

1. Driver's and front passenger's air bag*

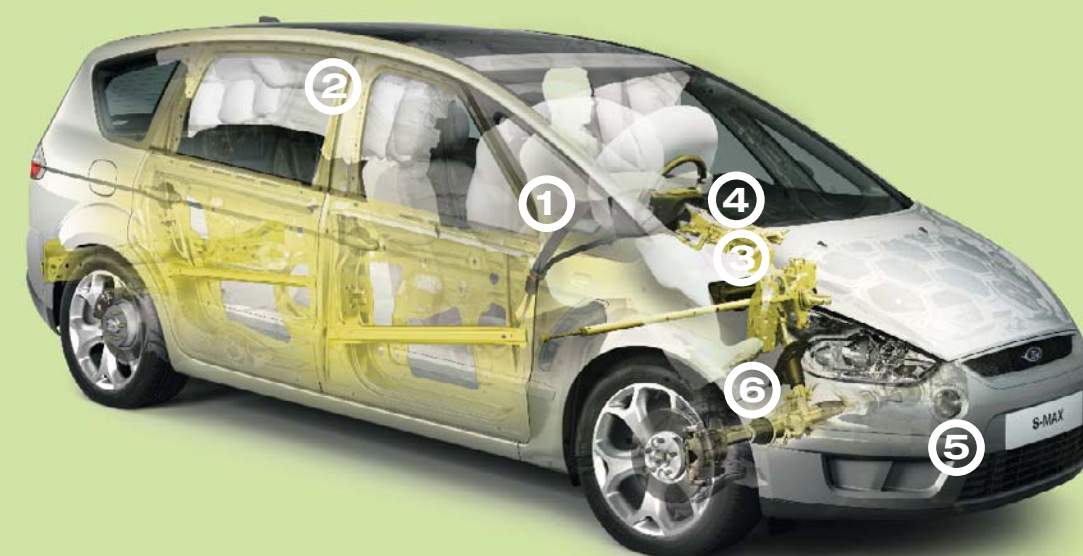
Instant protection in the event of a head-on collision. Also standard are front seat side airbags.

2. Curtain airbags

First and second row curtain airbags for side impact protection.

3. Driver's knee airbag

Improve knee protection thanks to the new driver's knee bolster airbag.



Electronic Stability Programme (ESP)

ESP is designed to detect and automatically compensate for loss of control under extreme conditions, using brakes and throttle to keep the vehicle firmly on track. Available as an option (at extra cost)

***Note:** A child seat should never be placed in the front passenger seat when the Ford vehicle is equipped with an operational front passenger's airbag. The safest place for children is properly restrained on the second row seats.

Titanium

Beneath the bold exterior of the S-MAX Titanium lies a wealth of innovative technology and sporty features, not to mention comfort. And if you still want to add something extra, there's the optional Titanium X-Pack to make an even bigger impression.



Key features include:

- 17" 5-spoke alloy wheels
- Leather-wrapped steering wheel, gear knob and handbrake grip
- Power-operated and heated door mirrors with puddle lamps
- Driver's power height adjustment with manual adjustable lumbar support
- Brushed stainless steel front door scuff plates
- Autowipers with rain sensor
- Cruise control
- Automatic headlights
- Instrument panel and door spears in metal finish
- Dual-zone Electronic Automatic Temperature Control (DEATC), CFC-free
- Stereo radio/CD 6-disc in dash CD autochanger
- 'Park Assist' - front and rear sensors

Titanium X-Pack

Includes halogen AFS headlights, including static bending lights, Alcantara seat trim, panorama roof, Advanced Bluetooth® Hands Free Phone and Voice Control System (mobile phone not included), and 18" 5-spoke alloy wheels. Available as an option on Titanium (at extra cost)

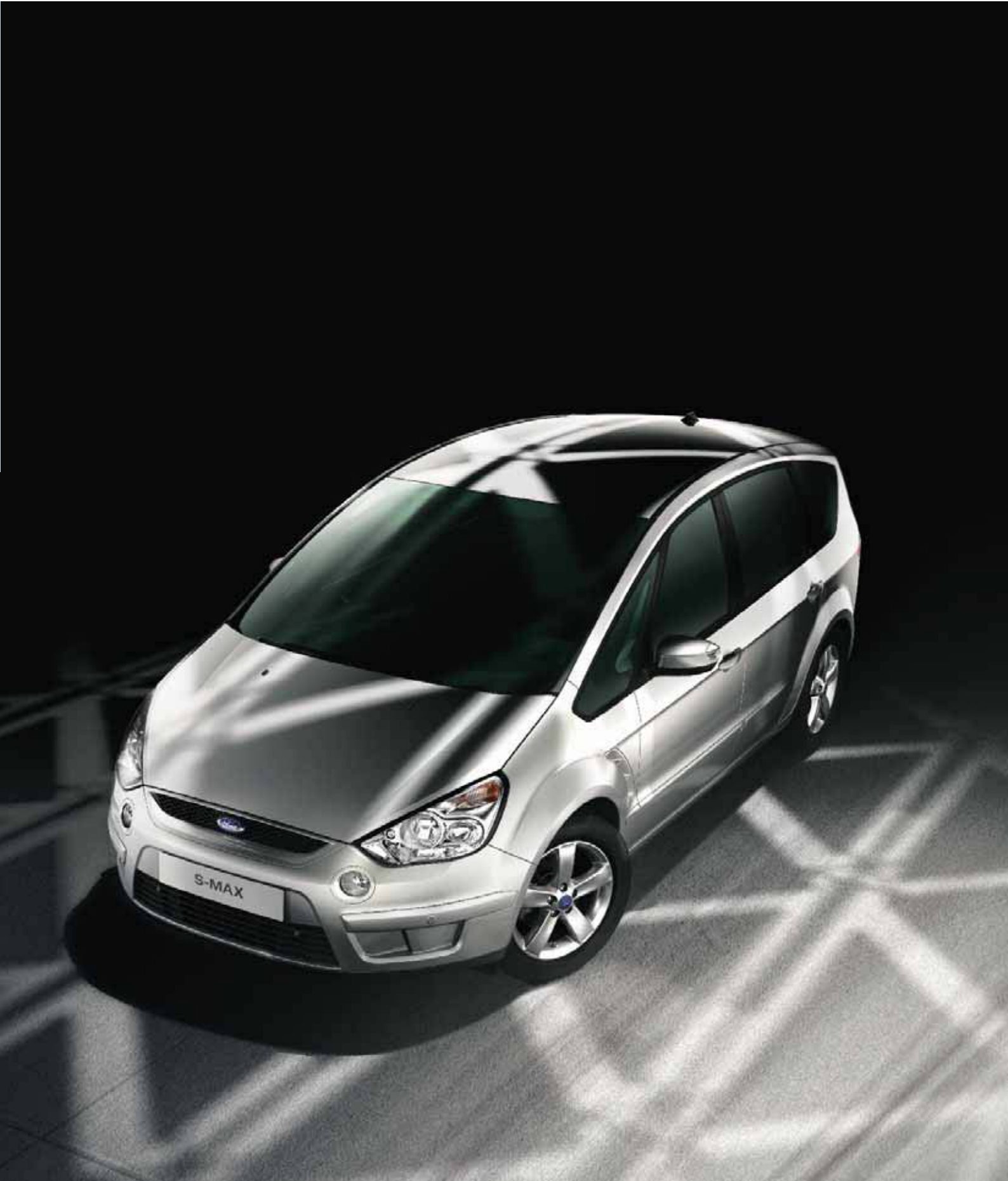
Sport Pack

Includes 18" 5-spoke alloy wheels, partial leather seats and sport suspension - available during second half 2006 on selected models (at extra cost)



Puddle lamps

These small but powerful lights on the door mirrors help to illuminate your path as you approach and leave the car. Standard on Titanium.





Dual-zone Electronic Automatic Temperature Control (DEATC)

Can be adjusted separately for the driver and front passenger, with up to 6°C variation from side to side. Standard on Zetec and Titanium models.

Zetec

The S-MAX Zetec effortlessly merges sports styling with a flexible and spacious interior.

Key features include:

- 16" Zetec Alloy wheels (with locking wheel nuts)
- Leather-trimmed steering wheel and gear knob
- Sports-style seats with driver's manual adjustable lumbar support
- Dual-zone Electronic Automatic Temperature Control (DEATC), CFC-free
- Power-operated front and rear windows with global opening/close
- Body colour door handles and grille with body colour surround
- Tonneau cover

LX

All the essential features with an abundance of style.

Key features include:

- 16" steel wheels
- Front fog lights
- Power-operated and heated door mirrors with side indicators
- Steering wheel toggle controls for audio and trip computer
- CFC-free air conditioning
- 7-seats with Ford FoldFlatSystem (FFS)(2nd and 3rd row)
- Power-operated front windows
- Remote control central locking
- Trip computer
- Anti-lock brakes (ABS)
- 'Quickclear' heated front windscreen
- Perimeter with volume sensing alarm (CAT 1 Thatcham approved)
- Intelligent Protection System (IPS)

Underfloor stowage

Keep valuable items away from prying eyes.



For full details, please see specifications section at the back of the brochure.

Your tunes, their tunes or just the sweet sound of a smooth drive. Every journey has a different beat.

silence⁺

Cordless headphones

Available as part of the optional MultiMedia DVD system on selected models (at extra cost).



Ford audio

Every note in crystal-clear form with Ford's premium audio systems.

Bluetooth® with Voice Control

Enables you to make hands-free calls, while the Voice Control System technology lets you control your Bluetooth® compatible mobile phone (not included), audio, DVD navigation (where fitted at extra cost) and Dual Electronic Automatic Temperature Control (DEATC) (Titanium and Zetec only) with the sound of your voice. Available as an option (at extra cost).



6006CD stereo radio/CD

With its 6-disc in-dash CD autochanger, the 6006CD stereo radio/CD delivers hours of unbroken, crystal-clear sound. Standard on Titanium and available as an option on Zetec (at extra cost).



CD navigation system

Features 4" monochrome display, stereo radio/CD and allows CD audio listening, once your route has been calculated. Available on selected models (at extra cost).



MultiMedia DVD system remote control

Infrared remote control provides easy access to the full range of MultiMedia DVD entertainment options. Available on selected models (at extra cost).



Note The Bluetooth® word mark and logos are owned by the Bluetooth SIG, Inc. and any use of such marks by Ford Motor Company Limited and its associated companies is under licence. Other trademarks and trade names are those of their respective owners.

***Note** It is an offence for drivers to use a hand-held mobile phone or similar device while driving.

Choose boldness,
choose beauty.
Choose to be noticed.

select⁺



Dynamic style. The bold 18" 5-spoke alloy wheel. Available as an option on selected models or accessory (both at extra cost)

Every part of the Ford S-MAX is designed to be seen. And with a choice of stunning sporty wheel designs, attracting second glances will become second nature.

18" 5-spoke alloy wheel.
Available as an option on
selected models or accessory
(both at extra cost)



17" 9-spoke alloy wheel.
Available as an option on
selected models or accessory
(both at extra cost)



17" 5-spoke alloy wheel.
Standard on Titanium.
Available as an accessory (at
extra cost)



16" 5-spoke alloy wheel.
Standard on Zetec



Standard = Standard
on your vehicle.

Option = Can be
ordered only together
with your new vehicle.

Accessory = Available
from your Ford Dealer.

16" 7-spoke wheelcover.
Standard on LX.



17" 9-spoke wheelcover -
available during second half
2006 (LX only and at extra
cost)





active⁺

FordBoutique Hawk bike

Indulge your sense of style with this superb bike, available with or without gear change feature. Order code F05-13-12 (without gearshift) F05-13-14 (with gearshift). Available as an accessory (at extra cost)



FordBoutique sunglasses

When the sun's dazzling, dazzle it right back with these stylish sunglasses. Order code F06-20-15. Available as an accessory (at extra cost)



Dog guard system

Robust, full-height dog guard system keeps dogs or items of luggage safely in the luggage compartment. Can be fixed either behind the second-row seats or behind the front seats when the second-row seats have been folded down. Meets European ECE-17 safety requirement. Available as an accessory (at extra cost)

Add more

Your Ford S-MAX is raring to go. So make sure you're fully equipped. You can choose from a wide range of accessories to make every journey an adventure to look forward to.



FordBoutique heart rate watch

How hard are you working? Just a glance at your wrist will tell. Order code F06-11-22. Available as an accessory (at extra cost)

Load protection net

This durable retention net keeps your items secure in the luggage compartment while you're on the move. Meets European ECE-17 safety requirement. Available as an accessory (at extra cost)



Get out there and try something new. Your sense of adventure is waiting to be indulged.



FordBoutique foldable bike

This sturdy yet lightweight bike folds down to half its full size for easy storage. Order code F06-13-18. Available as an accessory (at extra cost)

Suited to your lifestyle

A family picnic or a snowboarding trip with friends. A mountain biking expedition or just a kick-about in the park. Whatever you're planning, the spacious and flexible interior of the Ford S-MAX is always prepared.



Activity Kit

Using a series of aluminium bars and special attachments that are fitted in the rear, this innovative kit allows items to be securely locked in place. Available as an option or accessory (both at extra cost)

Premium velour carpet floor mats

Luxurious mats made to complement your chosen interior. Driver's mat is fixed to prevent slippage. Also available as standard and rubber versions. Available as an accessory (at extra cost)



Choose more

Leave nothing and no-one behind with Ford S-MAX's innovative stowage solutions.

Britax Römer child seat*



Various child seats, also with ISOFIX, available for all ages.

Thule roof box*

Different sized boxes protect your luggage from weather and theft.

Roof base carrier*

Base for all shown attachments.

Load protection net**

Keeps your items secure in the luggage compartment.



Anti-slip luggage compartment mat*

Moulded to fit perfectly into the vehicle. Incorporates anti-slip surface to prevent loose items sliding around while driving.

Contoured mudflaps*

Available as sets for front and rear.



Waeco coolbox*

High-performance 35 litre capacity coolbox, cools down to 1°C, integrated 230v AC connector.

Thule interior bike carrier*

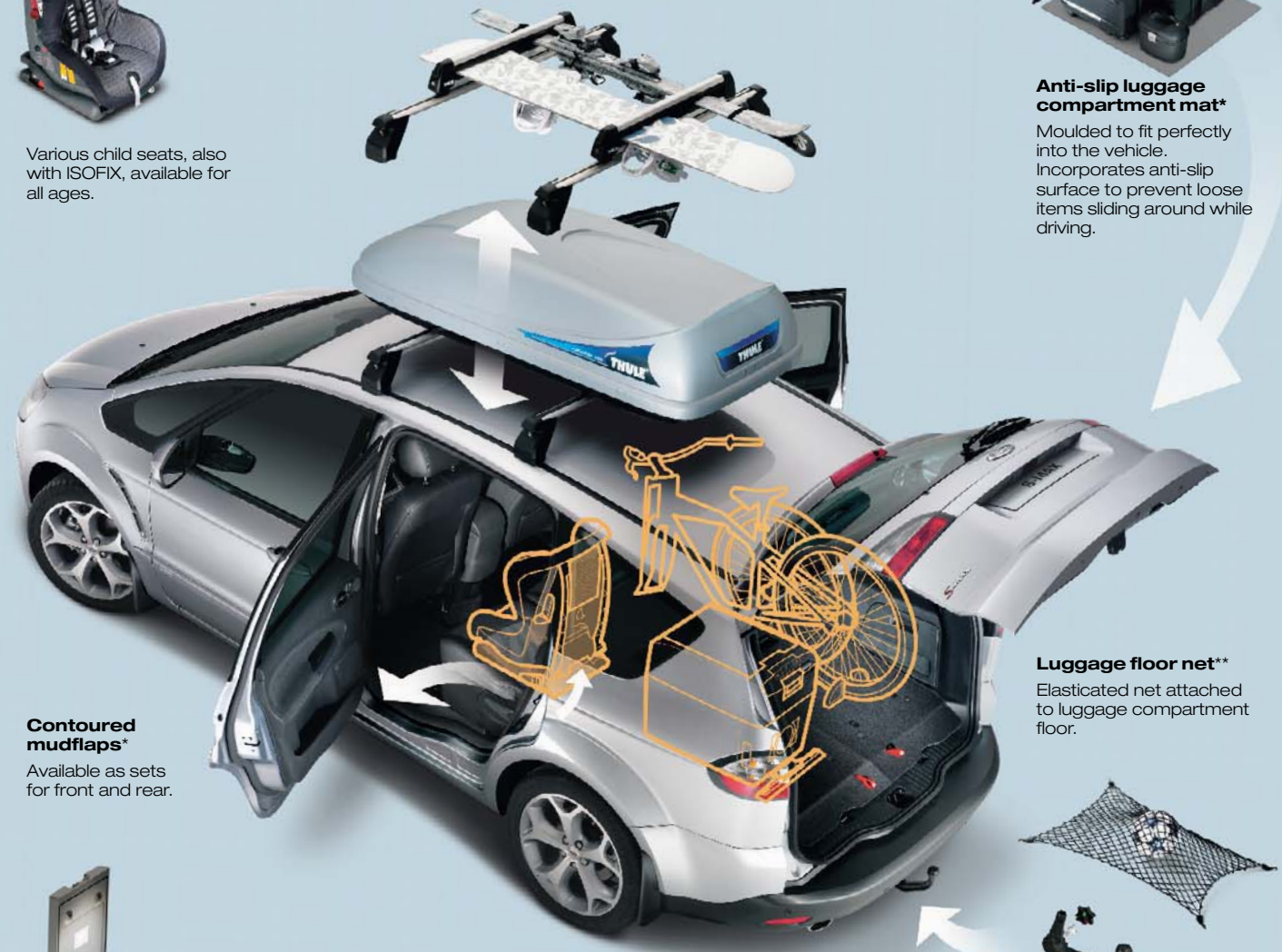
Up to three bike carriers can be fixed to the Activity Kit (option or accessory at extra cost).

Activity Kit**

With numerous flexible stowage solutions (see opposite).

Detachable towbar**

For extra transport and stowage capability. Also available as fixed version.



For more details on the innovative new Activity Kit and for further options for personalising your Ford S-MAX with a range of specially-designed accessories, please visit www.ford.co.uk

* Available as an accessory (at extra cost).

** Available as an option and accessory (at extra cost).



easy⁺

There are many routes to achieve the things you want. We believe excellent service is the only way forward.

Finance and services

Across the UK, a dedicated network of Ford Dealers are equipped and trained to meet the needs of today's drivers. Because of our coveted reputation for quality and reliability, from the moment your new vehicle leaves the showroom, you are assured of lasting, attentive service in many ways. Ford not only cares through Dealers, we also offer a variety of finance and leasing schemes to suit the needs of both the private and business customer. With our wide choice of plans and services no one is more committed to delivering complete motoring confidence and total peace of mind than Ford.

Ford**Credit**

As part of Ford Motor Company Limited, Ford Credit offers convenient and competitive financial services to Ford customers. Choose, try, finance and insure your Ford – without having to leave the showroom.

Ford Options Ford Options is the flexible way to finance your Ford. If you are looking to renew your vehicle more often, this is the ideal plan. At the end of the agreement, choose which option suits you best – own the vehicle, return it or choose a new one.

Ford Acquire Ford Acquire is a simple method of vehicle finance for private customers and business users. Convenient to arrange, and with flexible terms to suit your needs, owning your Ford has never been so easy.

Ford Business Partner As a specialist division of Ford Credit dedicated to partnering businesses, Ford Business Partner will work with you to achieve a complete Contract Hire transport solution.

Ford Insure Ford Insure offers a wide range of products for you and your Ford including Comprehensive Motor Insurance, Payment Protection Plan* and Guaranteed Asset Protection**. When you purchase a Ford from a Ford Dealer, you will receive 7 days' Driveaway cover*** free when you call Ford Insure for a no-obligation annual quotation.

What's the next step? Your local Ford Dealer will be pleased to help if you have any further queries and advise you of current special promotions. Your Dealer can also supply a personalised quotation for the finance plan and vehicle of your choice. To find your local Ford Dealer, please call 0845 7111 888. You can also obtain a personalised quotation for the finance plan of your choice.

Services

Company Car Drivers Talkback - the company car drivers' club offers members extended test drives, tax and buying advice as well as special offers and invitations to special driver events. To join, log on to www.talkbackclub.com or call 0845 605 55 66 - it's free and you don't even have to drive a Ford.

Ford Mobility MAGIC (Mobility and General Information Centre) is a Ford-dedicated care centre created to provide free and comprehensive information on all motoring and mobility issues to anyone requiring such assistance. MAGIC has many special offers for HRDLA recipients, or Motability scheme users, call free on 0800 240 241.

Ford Protect Every new Ford car sold is protected by 12 months' unlimited mileage manufacturer's warranty, plus the option of extending this warranty to a 3-year/60,000 miles Ford Protect Classic Plan at no extra cost. Upgrades are also available, giving you the option of extended Ford Assistance and scheduled servicing.

Ford Rapid Fit The national fast-fit network backed by Ford, offering you the convenience of a 'no-appointment-necessary, while-you-wait' service covering tyres, exhausts, brakes, batteries and much more. There are over 260 sites nationwide.

Ford Accident Repair Centres If your Ford is involved in an accident, your Ford Dealer is best placed to return it to its pre-accident condition. Dealerships displaying the Ford Accident Repair Centre sign all meet the rigorous customer service and repair quality standards laid down by Ford, and offer a three-year repair guarantee.

Ford Customer Relationship Centre In the unlikely event that your Ford Dealer can't help you or you need to speak to Ford directly, the Ford Customer Relationship Centre is just a phone call away. Call local rate 0845 841 1111.

Ford Rental - local service nationwide Providing quality car and van rental from Ford's latest model range. For further information contact your local Ford Dealer.

Finance subject to status and conditions. Over 18s only. Guarantees/Indemnities may be required. Written quotations on request: Freepost Ford Credit. Correct at the time of going to print. Contact your Ford Authorised Dealer for terms and conditions. Business Partner Contract Hire is provided by Lex Vehicle Leasing. Ford Insure is underwritten by Norwich Union Insurance Limited, registered in England no. 99122. A member of the Aviva group. Authorised and regulated by the Financial Services Authority. Registered office: 8 Surrey Street, Norwich NR1 3NG. For our joint protection, calls may be recorded and/or monitored. *Please refer to Payment Protection policy booklet for full details of the benefits and exclusions. **Ford Insure Guaranteed Asset Protection is underwritten by Mapfre Assistencia, Registered address 22/26 Prospect Hill, Galway, Ireland. Registered in Ireland No 903874. Authorised and regulated by the Financial Services Authority. ***Excesses apply. Please refer to Summary of Cover for details. Maximum 5 vehicles. Not available in conjunction with any other promotion.

Exterior dimensions

	S-MAX
Exterior (mm)	
Overall length	4768
Overall width without mirrors	1884
Overall width with mirrors	2154
Overall height (unladen)	1610-1658
Wheelbase	2850
Front overhang	916
Rear overhang	1002
Front tread	1578
Rear tread	1600

Interior dimensions

	S-MAX
Front (mm)	
Headroom	1017
Maximum effective leg room (rearmost normal)	1088
Shoulder room	1531
2nd row (mm)	
Headroom	967
Minimum effective leg room (nominal)	991
Shoulder room	1535
3rd row (mm)	
Headroom	943
Minimum effective leg room	725
Shoulder room	1386
Luggage area (mm)	
Maximum cargo height (with 3rd row seats)	912
Maximum cargo height (without 3rd row seats)	1017
Maximum cargo width	1203
Maximum cargo width between wheel arches	1147
Maximum cargo length to back of 3rd row seats	496
Maximum cargo length to back of 2nd row seats	1113-1263
Maximum cargo length to back of front seats	2053



Contour rubber mats
Tough, easy to clean.
The driver's mat is fixed
to prevent slippage. Available
as an accessory (at extra
cost)



Scuff plates
Brushed stainless steel scuff
plates both welcome and
protect. (Titanium only)

Interior dimensions

	S-MAX
Stowable luggage (cu m)*	
7-seat mode (laden to package tray)	285
5-seat mode (laden to roof) (normal/max.)	1051/1171
2-seat mode (laden to roof)	2000

*Measured using the VDA method. Dimensions may vary dependent on the model and equipment fitted.

Engine data

	Engine technical features	Maximum power ^o	Maximum torque ^o
2.0 Duratec 1999 cc	4 cylinders in line; DOHC; 16 valves; variable intake system; alloy cylinder head and block; electronic multipoint fuel injection	107 kW (145 PS) at 6000 min ⁻¹ (rpm)	190 Nm at 4500 min ⁻¹ (rpm)
2.5 Duratec 2522 cc	5 cylinders in line; DOHC; 20 valves; alloy cylinder head; Variable Valve Timing (VVT); dual-mass flywheel: turbo charged; electronic multipoint fuel injection	162 kW (220 PS) at 5000 min ⁻¹ (rpm)	324 Nm at 2100 min ⁻¹ (rpm)
1.8 Duratorq TDCi Euro IV Diesel 1753 cc	4 cylinders in line; SOHC; 8 valves; cast iron head and block; direct injection with high pressure, common-rail, multipoint fuel injection system; electrically actuated variable geometry turbocharger with intercooler and transient torque overboost function; electronic-EGR; dual-mass flywheel	92 kW (125 PS) at 3850 min ⁻¹ (rpm)	285* Nm at 1750 min ⁻¹ (rpm)
2.0 Duratorq TDCi Euro IV Diesel 1997 cc	4 cylinders in line; DOHC; 16 valves; alloy cylinder head; direct injection with high-pressure, common-rail, multipoint fuel injection; variable geometry turbocharger with intercooler and transient torque overboost function; electronic throttle; dual-mass flywheel	105 kW (143 PS) at 4000 min ⁻¹ (rpm)	340 Nm at 2000 min ⁻¹ (rpm)

^oTested in accordance with ISO 1585. **EGR** = Exhaust Gas Recirculation.

Fuel, performance and emissions

	Stage	Derivative(s)	CO ₂ emissions (g/km)	Fuel consumption in L/100 km (mpg) ^{oo}			Performance ^o		
				Urban	Extra Urban	Combined	Max. speed (mph)	0-60 mph(secs)	30-60 mph* (secs)
Ford S-MAX									
2.0 Duratec	Stage IV	LX, Zetec, Titanium	194	11.0 (25.7)	6.4 (44.1)	8.1 (34.9)	122	10.4	14.9
2.5 Duratec, Durashift 6-speed manual	Stage IV	Zetec, Titanium	224	13.3 (21.2)	7.1 (39.8)	9.4 (30.1)	143	7.4	8.6
1.8 Duratorq TDCi (125 PS)	Stage IV	LX, Zetec	164	7.9 (35.8)	5.2 (54.3)	6.2 (45.6)	116	11.1	12.3
1.8 Duratorq TDCi (125 PS), Durashift 6-speed manual	Stage IV	LX, Zetec, Titanium	164	7.9 (35.8)	5.2 (54.3)	6.2 (45.6)	116	10.9	10.3
2.0 Duratorq TDCi (140 PS), Durashift 6-speed manual	Stage IV	LX, Zetec, Titanium	169	8.1 (34.9)	5.4 (52.3)	6.4 (44.1)	122	9.7	9.2

*In 4th gear. ^oFord test figures. ^{oo}All CO₂ emissions figures in g/km and fuel consumption figures in L/100 km are from officially approved tests in accordance with EEC Directive 93/116/EC. The CO₂ emissions and fuel consumption test figures shown in the chart do not express or imply any guarantee of the fuel consumption of a car of the class in question. All the figures are based on tests conducted on vehicles with Core equipment level and with standard wheels and tyres; optional or accessory wheels and tyres may have an effect on the emissions and fuel consumption of a vehicle. **Urban** An engine started from cold in laboratory conditions operated at varying speeds, maximum 50 km/h, average 19 km/h over a theoretical distance of 4 km. **Extra Urban** Conducted immediately after the urban cycle, it consists of half steady speed driving and half varying speed driving, maximum 120 km/h over a distance of 7 km. **Combined** This is an average of the two parts of the test, weighted by the distances covered in each part. **Note** All vehicles are 5-speed manual unless stated. All petrol engines are equipped with a catalytic converter.



Parking heater
Allows you to start the car's
heater before you leave the
comfort of your home or
office, by using a built-in timer.
Available on diesel engines
only during the second half
2006 as an option (at extra
cost)

Model availability, weights and loads

	Kerbweights (kg)*			Gross Vehicle	Max. towable
	LX	Zetec	Titanium	Mass (kg)	mass (kg)
Ford S-MAX					
2.0 Duratec	1672	1679	1681	2340	1100
2.5 Duratec, Durashift 6-speed manual		1755	1758	2420	1700
1.8 Duratorq TDCi (125 PS) (Stage IV)	1721	1727	1730	2505	1450
1.8 Duratorq TDCi (125 PS), Durashift 6-speed manual (Stage IV)	1733	1739	1742	2505	1450
2.0 Duratorq TDCi (140 PS), Durashift 6-speed manual (Stage IV)	1724	1731	1733	2505	1750

*Represents the lightest kerbweight assuming the driver at 75 kg, full fluid levels and fuel levels, subject to manufacturing tolerances and options, etc., fitted. **Note** All vehicles are 5-speed manual unless stated. All petrol engines are equipped with a catalytic converter. **Towing limits** quoted represent the maximum towing ability of the vehicle at its Gross Vehicle Mass to restart on a 12 per cent gradient at sea level. The performance and economy of all models will be reduced when used for towing. **Nose weight limit** is a maximum of 75 kg on all models.

Insurance groups

	LX	Zetec	Titanium
Ford S-MAX			
2.0 Duratec	11E	11E	11E
2.5 Duratec, Durashift 6-speed manual		14E	14E
1.8 Duratorq TDCi (125 PS) (Stage IV)	10E	10E	10E
1.8 Duratorq TDCi (125 PS), Durashift 6-speed manual (Stage IV)	10E	10E	10E
2.0 Duratorq TDCi (140 PS), Durashift 6-speed manual (Stage IV)	11E	11E	11E

E = Exceeds security requirement for model concerned and group rating has been reduced.

Mechanical features

	LX	Zetec	Titanium
Brakes			
Disc brakes – Front and rear (ventilated front, solid rear)	●	●	●
Anti-lock brakes (ABS) with Electronic Brake-force Distribution (EBD)	●	●	●
Electronic Stability Programme (ESP) with Traction Assist (includes Emergency Brake Assist (EBA)) (not available with Interactive Vehicle Dynamic Control (IVDC) option)	○	○	○
Interactive Vehicle Dynamics Control (IVDC) with continuous controlled damping (CCD), sports suspension, and hill launch assist (not available with ESP option)	○	○	○
Electric Parking Brake (EPB)	○	○	○
Emergency Brake Light	●	●	●
Fuel tank			
70 litres (useable capacity)	●	●	●
Fuel cut-off – Inertia switch (petrol only)	●	●	●
Steering			
Hydraulic Power-Assisted Steering (HPAS) (except 2.0 Duratorq TDCi)	●	●	●
Electric Hydraulic Power-Assisted Steering (EHPAS) (2.0 Duratorq TDCi only)	●	●	●
Suspension and body			
Front – Independent with MacPherson struts, angled coil/spring damper units and lower A-arms, anti-roll bar	●	●	●
Rear – Independent Control Blade multi-link system, anti-roll bar	●	●	●
Rear – Self-levelling (not available with Interactive Vehicle Dynamic Control (IVDC))	○	○	○
Suspension – Sports	□	□	□

Mechanical features

	LX	Zetec	Titanium
Turning circle			
Kerb to kerb – 11.9 m	●	●	●
● = Standard, ○ = Optional, at extra cost, □ = Part of option pack, at extra cost			

Safety and security

	LX	Zetec	Titanium
Safety			
Intelligent Protection System (IPS):			
Airbags – Driver’s and front passenger’s*	●	●	●
Airbags – Front side impact, driver’s and front passenger’s	●	●	●
Airbags – Front and 2nd row, side curtain airbags deployed from the headlining	●	●	●
Airbags – Driver’s knee bolster airbag	●	●	●
Seat belts – 3-point seat belts with pre-tensioners and retractors (front seats only)	●	●	●
Seat belts – Front, height adjustable mounts	●	●	●
Side impact door beams (anti-flutter bars), front and rear, steel safety cage with engine department cross beam	●	●	●
Collapsible steering column and pedals	●	●	●
Seats – ISOFIX hard points attachments for child seat (outer seats on 2nd row only)	●	●	●
Airbag – Delete front passenger’s (Dealer-fit)	○	○	○
Security			
Vehicle Identification Number (VIN) – Visible	●	●	●
Immobiliser – Passive Anti-Theft System (PATs)	●	●	●
Fuel flap – Central locking linked	●	●	●
Locks – High-security, anti-burst, shielded with strengthened mountings and childproof locks on rear doors	●	●	●
Locks – Remote control central double locking	●	●	●
Locks – 2nd remote key	●	●	●
Alarm – Perimeter with volume sensing (CAT 1 Thatcham approved)	●	●	●

● = Standard, ○ = Optional, at extra cost.
***Note: A child seat should never be placed in the front passenger seat when the Ford vehicle is equipped with an operational front passenger's airbag. The safest place for children is properly restrained on the rear seat.**


Wheel availability

	LX	Zetec	Titanium
6½x16" steel with 7-spoke wheelcovers and 215/60 Rx16 tyres	●		
7x17" steel with 7-spoke wheelcovers and 225/50 Rx17 runflat tyres - available second half 2006	○		
6½x16" 5-spoke alloy with 215/60 Rx16 tyres		●	
7x17" 5-spoke alloy with 225/50 Rx17 tyres			●
7x17" 9-spoke alloy with 225/50 Rx17 runflat tyres (runflat tyres must be ordered with Tyre Pressure Monitor System (TPMS) and either Electronic Stability Programme (ESP), Interactive Vehicle Dynamics Control (IVDC), or Adaptive Cruise Control (ACC))		○	○
8x18" 5-spoke alloy with 235/45 Rx18 tyres		○	○ / □
Locking wheel nuts (only available with alloy wheels)		●	●
Tyre Pressure Monitoring System	○	○	○

● = Standard, ○ = Optional, at extra cost, □ = Part of option pack, at extra cost.


Rear seat heat ducts

Side-mounted air vents provide extra ventilation for second-row seat passengers.




Tonneau cover


Retractable tonneau cover keeps your belongings safely out of sight. Standard on Titanium and Zetec and available as an option on LX (at extra cost)



Parking brake

Elegantly designed new parking brake is easy to use while saving valuable space. Image is from Titanium and features some options (at extra cost)





Electric Parking Brake (EPB)

The stylish EPB delivers the ultimate in comfort and convenience. To engage and disengage the handbrake takes a simple touch of a button. It will even disengage automatically if you choose. Available as an option (at extra cost)

Exterior features

	LX	Zetec	Titanium
Styling			
Bodyside mouldings – Body colour	●	●	●
Bumper – Front, body colour, with integrated rub strips	●	●	●
Bumper – Rear, body colour	●	●	●
Door handles – Body colour		●	●
Paint – Metallic	○	○	○
Panorama roof – Fixed, includes 2-off manual sunblinds (LX includes illuminated sunvisor vanity mirrors) (and in Titanium X Pack)	○	○	○ / □
Radiator grilles – Black, mesh	●		
Radiator grilles – Body colour surround		●	●
Functional			
Door mirrors – Electrically-operated and heated, body colour housings, with side turn indicators and, on Titanium, puddle lights	●	●	●
Exhaust – Dual (2.5 Duratec petrol models only)		●	●
Heated rear window	●	●	●
Heated windscreen – ‘Quickclear’	●	●	●
Electronic tailgate release	●	●	●
Glass – Privacy, dark tinted (rear side windows only)	○	○ / □	●
‘Park Assist’ – Front and rear sensors		□	●
Towbar – Fixed (including 13-pin electrical kit) (not in combination with self-levelling rear suspension)	○	○	○
Towbar – Detachable (including 13-pin electrical kit)	○	○	○
Windscreen – Solar Reflect Windshield			○
Wipers – Front, variable intermittent with electric wash	●	●	
Wipers – Autowipers, with rain sensor			●
Wipers – Tailgate, intermittent with electric wash and auto reverse wipe	●	●	●
Lights			
Adaptive Front Lighting System (not available to order with xenon headlights)	○	○	○ / □
Bi-Xenon Adaptive Front Lighting System (includes xenon headlights, automatic headlight levelling and washer jets) - not available with Titanium X pack		○	○
Automatic headlights			●
Headlamp delay (switch-off headlights)	●	●	●
Front fog lights	●	●	●
Rear fog lights, reversing light, high-mounted rear brake light	●	●	●

● = Standard, ○ = Optional, at extra cost, □ = Part of option pack, at extra cost.

Audio and communication systems

	LX	Zetec	Titanium
Audio			
Stereo radio/CD – Model 6000 CD, RDS EON, ‘Keycode’ anti-theft coding	●	●	
Stereo radio/CD - Model 6006 CD, with front loading 6CD changer, RDS EON, 'Keycode' anti-theft coding (not available with CD/DVD navigation systems)		○	●
Steering wheel radio toggle switch	●	●	●
CD navigation system – Bosch Blaupunkt TravelPilot EX, MP3 capability, 4" monochrome display with external 6-disc CD autochanger		○	○
DVD navigation system – 7" touchscreen, colour display, MP3 capability, 4 speakers with external 6-disc CD autochanger		○	○
MultiMedia DVD system – DVD player located under front passenger's seat, two LCD screens integrated in the front head restraints, with infra red remote control and two infra red headphones		○	○
Advanced Bluetooth® Hands Free Phone and Voice Control System (excludes cradle and tri-band antenna). Mobile phone not included.	○	○	○
Premium Bluetooth® Hands Free Phone and Voice Control System (includes pre-equipment pack (with battery charging) and tri-band antenna). Cradle is extra cost and requires Dealer-fitment. Please check with dealer for phone compatibility. Mobile phone not included.	○	○	○
Portable music connection socket - Allows connection of portable music players (including MP3s) to car's audio system	●	●	●

● = Standard, ○ = Optional, at extra cost.
The Bluetooth® word mark and logos are owned by the Bluetooth SIG, Inc. and any use of such marks by Ford Motor Company is under licence. Other trademarks and trade names are those of their respective owners.

Interior features

	LX	Zetec	Titanium
Comfort and convenience			
Accessory socket/cigar lighter – Front	●	●	●
Air recirculation switch	●	●	●
Air conditioning – CFC-free	●		
Air conditioning – CFC-free with Dual Electronic Automatic Temperature Control (DEATC)		●	●
Centre console – Includes hinged armrest and stowage, two moulded cup holders, and 2nd row rear ashtray	●	●	●
Centre console – Overhead, including sunglasses stowage	●	●	●
Clock – Digital (only as part of ICE display)	●	●	●
Cup holders – Two integrated into centre console, and two located in 3rd row sidewall trim	●	●	●
Glovebox	●	●	●
Grab handles – Front and 2nd row folding with rear coat hooks	●	●	●
Mirror – Auto-dimming rear-view			●
Stowage – Located in rear quarter panels and rear quarter side trim panels	●	●	●
Stowage trays – Rear 2nd row underseat foot area	●	●	●
Sunblinds – Integrated pull-up on rear doors (only available with electrically-operated rear windows) (available during second half 2006)		○	○
Sunvisors – Driver's and passenger's with mirror and cover	●		
Sunvisors – Driver's and passenger's with illuminated mirror and cover		●	●

Toggle controls

Steering wheel-mounted toggle controls let you operate the audio system and trip computer without taking your hands off the wheel. (For use with Ford audio systems only)



Bi-xenon AFS headlights

Ford S-MAX's bi-xenon Adaptive Front Lighting (AFS) headlights shine brighter and project a wider angle of light than conventional headlights. More than twice as powerful as halogen headlights, but using only two thirds of the energy. Comes with static bending lights. Available on selected models (at extra cost)

Adaptive Cruise Control (ACC) with Forward Alert (FA)

ACC with FA is a clever combination of cruise control and distance control. Simply enter the desired distance from the vehicle in front and ACC will automatically maintain it. Particularly relaxing in heavy rush-hour traffic. Available on selected models (at extra cost)



Integrated sunblinds

Are integrated into the rear doors and can be quickly and easily drawn up to block out unwanted sunlight from the rear compartment. Available during second half 2006 on selected models (at extra cost)

Interior features

	LX	Zetec	Titanium
Windows – Front, electrically-operated with one-touch lowering/closing on driver's side and global opening/closing	●		
Windows – Front and rear, electrically-operated with one-touch lowering/closing, and global opening/closing		●	●
Seat and seat belts			
Front seat – Driver's manual height adjustment	●	●	
Front seat – Driver's power height adjustment with manual adjustable lumbar support			●
Front seat – Driver's 8-way power adjustment (available during second half 2006)			○
Front seat – Driver's manual adjustable lumbar support		●	●
Front seat – Passenger's 8-way power adjustment with manual adjustable lumbar support			○
Front seats – Anti-submarining, fully reclining with height-adjustable head restraints	●	●	
Front seats – Anti-submarining, fully reclining with fully-adjustable head restraints (only available on Zetec if specified with either partial or full leather trim)		○	●
Front seats – Sports-style		●	●
Front seats – Heated, with variable control	○	○	○
Front seats – Variable climate control			○
2nd row seats – Three individual fold-flat seats with height-adjustable head restraints	●	●	●
2nd row seats – Easy entry tip and slide system (not avilable if sliding load floor ordered ilo 3rd row seats)	●	●	●
3rd row seats – Two individual fold-flat seats with height-adjustable head restraints (only available with 2nd row easy entry tip and slide system)	●	●	●
Seats – Partial leather trimmed (includes velour front and rear door trim)		○	○
Seats – Leather trimmed (includes velour front and rear door trim)		○	○ / □
Seat back trays – Folding (available during second half 2006)		○	○
Stowage pockets – Front seat backs	●	●	●
Seat belts – Front, inertia reel, with grabbers, pre-tensioners and height-adjustable mounts. Rear, three inertia reel, lap and diagonal (2nd row), two inertia reel, lap and diagonal (3rd row, when 3rd row seats specified)	●	●	●
Carpet and trim			
Door handles – Chrome finish	●	●	●
Gear lever knob – Leather-trimmed		●	●
Handbrake cover – Leather-covered			●
Scuff plates – Front, aluminium finish			●
Instruments and controls			
Headlight levelling control	●	●	●
Trip/fuel computer, incorporating exterior air temperature display and low temperature warning lights	●	●	●
Warning indicators for glow plugs on (diesel only), brake system, airbags, lights on, main beam, front and rear fog lights, handbrake, ESP (where specified), coolant temperature, driver's seat belt, ignition on, oil pressure, oil change, tyre pressure monitor system (where specified), and 'lights on', key in ignition, door ajar and front seat belt reminder warning alarms	●	●	●
Illuminated recirculation heater controls – 4-speed fan, with pollen filter, direction control, two dedicated side window demists and rear compartment ducts	●	●	●
Cruise control (only available on LX in combination with leather-trimmed steering wheel)	○	○	●

Interior features

	LX	Zetec	Titanium
Steering column – Reach and rake adjustable	●	●	●
Steering wheel – Leather-trimmed	□	●	●
Interior lighting			
Courtesy light – Front overhead with theatre-style dimming and delayed switch-off	●	●	●
Courtesy lights – Front overhead with two 2nd row map lights and, on Titanium, front footwell light		●	●
Courtesy lights – Illuminated entry system (courtesy lights and door mirror puddle lights, if fitted, illuminate when vehicle unlocked)	●	●	●
Luggage compartment			
Courtesy lights – Two	●	●	●
Sliding load floor (in lieu of 3rd row seats)	○	○	○
Tie-down hooks	●	●	●
Tonneau cover	○	●	●

● = Standard, ○ = Optional, at extra cost, □ = Part of an option pack, at extra cost.

Option packs

	LX	Zetec	Titanium
Active Driver Assistance Pack – Adaptive cruise control (ACC), collision mitigation by braking, audio and visual forward collision warning system, ESP, EBA, and hill launch assist		○	○
Sport Pack – Sports-style, partial leather-trimmed front seats and 18" 5-spoke alloy wheels with 235/45 Rx18 tyres, and sports suspension (available during second half 2006)		○	○
Titanium X Pack – Fixed panorama roof, Alcantara/leather trimmed seats in Ebony Platinum (includes velour front and rear door trim), Adaptive Front Lighting System (not available with Bi-xenon/Xenon headlights), Advanced Bluetooth® HandsFree Phone and Voice Control System (Mobile phone not included), 18" 5-spoke alloy wheels with 235/45 Rx18 tyres			○
Zetec Pack - 'Park Assist' (front and rear sensors) and privacy glass		○	●
Visibility Pack – Automatic headlights, Autowipers with rain sensor and auto-dimming rear view mirror			●

● = Standard, ○ = Optional, at extra cost.

Solar Reflect Windshield

The Solar Reflect Windshield blocks nearly four times the level of solar radiation as standard tinted glass, helping to keep the interior cooler and significantly improving the efficiency of the air conditioning. Available on Titanium (at extra cost)



Underseat stowage

Valuable items can be tucked away out of sight thanks to the innovative stowage beneath the driver's and front passenger's seats. Available on selected models during second half 2006 (at extra cost)

Ford FoldFlatSystem (FFS)

Enables the rear seats to create a flat load floor, further enhancing the Ford S-MAX's load-carrying ability.



Tyre Pressure Monitoring System (TPMS)

Allows you to monitor tyre pressure while on the move. System alerts you if a tyre pressure is too low or if the vehicle suffers a puncture. Available as an option (at extra cost)

A close-up, low-angle shot of a person's legs and feet on a sandy beach. The person is wearing a blue swimsuit and is barefoot. They are using a stick to draw a heart shape in the sand. The sand is light-colored and has some footprints and other markings. The background is a bright, sunny beach scene.

expression⁺

There are many ways to make
your mark. With the Ford S-MAX,
the car you drive will be one
of them.



Inner qualities

Simplicity and style in perfect harmony

Ink Blue Tria in Ebony seat facing
Twill in Ebony seat sides

Integrate in Generic Orange seat facing
Twill in Ebony seat sides

Integrate in Infinity Blue seat facing
Twill in Infinity Blue seat sides

Waffle in Midnight Black seat facing
Lux in Ebony seat sides

Waffle in Infinity Blue seat facing
Lux in Infinity Blue seat sides

Waffle in Midnight Black seat facing
Napoli leather in Ebony seat sides

Napoli perforated leather in Charcoal seat facing*
Napoli leather in Ebony seat sides

Napoli perforated leather in Infinity Blue seat facing*
Napoli leather in Infinity Blue seat sides

Alcantara perforated in Ebony Platinum seat facing*
Napoli leather in Ebony seat sides

Alcantara perforated in Infinity Blue seat facing*
Napoli leather in Infinity Blue seat sides

Colour and trim

Model	LX	Zetec	Titanium					
Seat facing trim	Ink Blue Tria	Integrate	Waffle / partial leather*	Napoli perforated leather*	Waffle	Waffle / partial leather*	Napoli perforated leather*	Alcantara / perforated leather*
Solid body colours								
Colorado Red	E	O	E	C	E	E	C	P
Deep Navy	E	O / I	E	C / I	E / I	E	C / I	P / I
Diamond White	E	O / I	E	C / I	E / I	E	C / I	P / I
Metallic body colours*								
Blue Ambition	E	O / I	E	C / I	E / I	E	C / I	P / I
Ink Blue	E	O / I	E	C / I	E / I	E	C / I	P / I
Kelp	E	O / I	E	C / I	E / I	E	C / I	P / I
Machine Silver	E	O / I	E	C / I	E / I	E	C / I	P / I
Panther Black	E	O / I	E	C / I	E / I	E	C / I	P / I
Sea Grey	E	O / I	E	C / I	E / I	E	C / I	P / I
Stardust Silver	E	O / I	E	C / I	E / I	E	C / I	P / I
Tango Red	E	O	E	C	E	E	C	P
Tonic	E	O / I	E	C / I	E / I	E	C / I	P / I
White Grape	E	O / I	E	C / I	E / I	E	C / I	P / I

Interior trim colour: E - Ebony, O - Generic Orange, I - Infinity Blue, C - Charcoal, P - Ebony Platinum, / – Choice of colour. (Note: Titanium X Pack is only available with Alcantara / leather in Ebony Platinum trim at extra cost)
*Metallic paint, partial leather, Alcantara / leather and leather trim are optional, at extra cost.

Allergy-tested interior
All the materials used in the manufacture of the interior of the Ford S-MAX meet the strict requirements of the TÜV TOXPROOF Criteria Catalogue for Vehicle Interiors by the TÜV Produkt und Umwelt GmbH and are designed to minimise the risk of allergic reactions.
With doors and windows closed, the interior materials selected – together with the integrated pollen filter – protect the passengers against most allergising particles from the outdoor air. At higher temperatures, the additional use of air conditioning is recommended.

*Partial leather, leather and Alcantara trims are options, at extra cost.



Express yourself

Taste is a matter of personal preference



Colorado Red
Solid body colour



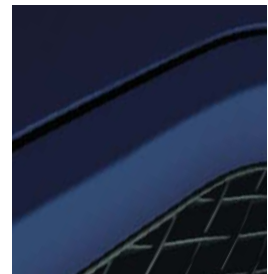
Deep Navy
Solid body colour



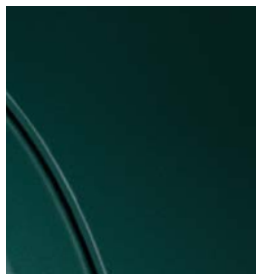
Diamond White
Solid body colour



Blue Ambition*
Metallic body colour



Ink Blue*
Metallic body colour



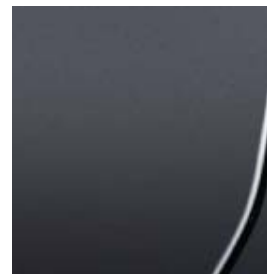
Kelp*
Metallic body colour



Machine Silver*
Metallic body colour



Panther Black*
Metallic body colour



Sea Grey*
Metallic body colour



Stardust Silver*
Metallic body colour



Tango*
Metallic body colour



Tonic*
Metallic body colour



White Grape*
Metallic body colour

The Ford S-MAX is covered by the Ford Perforation Warranty for 12 years from the date of first registration. Subject to terms and conditions.

Note The car images used are to illustrate body colours only and may not reflect current specification. Colours and trims reproduced within this brochure may vary from the actual colours, due to the limitations of the printing processes used.

*Metallic body colours are extra cost options.



Published by Ford Motor Company Limited,
Brentwood, Essex, England.
Registered in England No. 235446.

FA 1504.

BJN 301569. FoE H32E.

0506/24m/GBR en

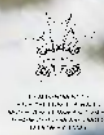
May 2006.

© Ford Motor Company Limited.

www.ford.co.uk

living⁺

Dealer



Collect Nectar points at
participating Ford Dealers now. So
keep a look out for the latest Ford
offers at www.ford.co.uk/nectar or
call the Ford Information Service on
0845 7111 888.*

The Government fuel figures do not express or imply any guarantee of the fuel consumption of any particular car. The cars themselves have not been tested and there are inevitably differences between individual cars of the same model. In addition, a car may incorporate particular modifications. Furthermore, the driver's style and road and traffic conditions, as well as the extent to which the car has been driven and the standard of maintenance, will affect its fuel consumption. **Insurance groups** are only as recommended by the Association of British Insurers. You should always consult your insurance adviser for confirmation. **Illustrations, descriptions and specifications.** This catalogue was correct at the time of going to print. However, Ford policy is one of continuous product development. The right is reserved to change specifications, colours and prices of the models and items illustrated and described in this publication at any time. For the latest details always consult your Ford Dealer. **Optional equipment.** Throughout this publication, wherever a feature is described as being an 'Option' or 'Optional Fitment/Pack', etc., you should assume that it will be at extra cost to the base vehicle, unless specifically stated to the contrary. All models and colour combinations are subject to availability. ***Ford Information Service.** Calls are charged at national rate and may be recorded for training purposes.