

FIESTA



Go Further

Embrace life

Life moves faster than ever before. From work, to nights out with friends, to weekends away. Life's busy. That's why it's so good. When you live life in overdrive you want a car that keeps pace, like the Ford Fiesta.



Fiesta Zetec shown in Aurora Blue.

Style and space

The Fiesta range gives you the freedom of space, so you can fit in all the shopping bags, or load up the gear for a weekend escape to the coast.



Fiesta LX shown in Highlight Silver.

Urban dynamic

Sleek and stylish, the Fiesta is designed to amplify the anticipation of the drive and physically engage your senses. Sexy and sporty from every angle, the Fiesta makes a big impression.



Fiesta Zetec shown in Chilli Orange.

Fresh design

Sculptured design-as-art. That's the Fiesta interior. The sexy surfaces, and smooth finishes are edgy and fresh. And with flexible storage solutions, there's plenty of space to load in your friends and their gear.



Fiesta Zetec interior shown. Connection cable sold separately.

Your kind of style

Guaranteed to make a big impact, the Fiesta is a small car that packs in a lot of style. It sparks an instant desire. From its athletic stance to the sexy look of the front grille and headlamps the Fiesta is equal parts daring and dynamic.



Fiesta Zetec shown in True Red.



Kinetic design can't stand still.

Ford's bold kinetic design gives Fiesta a dramatic sense of energy in motion. So even when you're stopped at a light, you'll appear on the move.



Light the way.

With its distinctive headlight design and front end styling, the Fiesta's brash looks and style really catch your eye.

Stay connected

The Fiesta makes it easy to stay connected 24/7. Keep in touch with friends using the hands-free Bluetooth® and Voice Control system, while iPod integration* and six speaker audio system keeps the music pumping. Wherever you're heading, you're connected every step of the way.



Keep your hands on the wheel.

Need to call while driving? Or perhaps, you want to change stations or the song on your iPod? Just say it. The Fiesta features an innovative Bluetooth® and Voice Control device that lets you do things while keeping your hands on the wheel and your eyes on the road.



In tune with you.

Whatever your driving music, the Fiesta makes sure you can play it. The Fiesta Zetec allows you to use your iPod® with the Fiesta's audio system*. Just connect it into the centre console and your music collection is always at your fingertips.

Beautiful to look at. Great to touch. Music to your ears. The Fiesta's interior is equipped with the latest driver-friendly innovations and elegant furnishings to deliver maximum comfort and functionality, and to give you the ultimate driving experience every day, all day. In fact, you may never want to get out.

Feel alive to drive

Exciting. Fun. Responsive. With its razor sharp handling driving a Fiesta is all these things, and more. In fact, you sense the Fiesta was designed and engineered to ensure every drive gives you a real buzz and makes you feel alive.



Fiesta Zetec shown in Aurora Blue.



PowerShift® technology.
Thanks to the latest PowerShift® technology, when you're driving the Fiesta it's like having the best of both worlds — smoother gear changes, with excellent fuel efficiency.



Economical diesel engine.
Choose a Fiesta Diesel and the ultra-low fuel consumption means you could enjoy significant savings at the pump and over 1000 kilometres between refuels.*

You'll discover that whizzing through city traffic is a breeze, and parking in tight spaces is no drama. Behind the wheel the zippy 1.6L engine, available in both petrol and diesel, in tandem with the racy 5-speed manual transmission delivers responsive acceleration. The optional 6-speed PowerShift® automatic on petrol variants delivers a true sportier feel when driving, along with greater fuel economy. And cruise control^ will help make weekend escapes even easier.

*Available on LX and Zetec models only. #Based on fuel consumption of 3.9L/100km, tested to ADR81/02 (extra urban cycle). Actual fuel consumption and range may vary and will depend on factors including driving habits, prevailing conditions and your vehicle's equipment, condition and use.

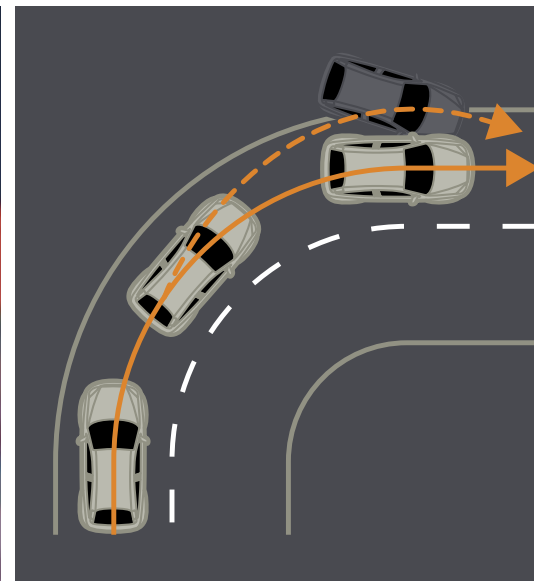
No worries

Just because you're in a small car doesn't mean you should be any less safe. That's why you'll be glad to know the Ford Fiesta packs in just as many safety features as your average family sedan.



Fiesta Zetec shown in Chilli Orange.

For added peace of mind, the Fiesta range comes with a 5-star ANCAP safety rating as standard.



Dynamic Stability Control.

Standard across the range, Dynamic Stability Control (DSC) strengthens your connection to the road and helps you avoid the problems of oversteer and understeer.



Superior safety.

For greater all round strength and protection, the Fiesta's high-strength steel passenger safety cell greatly reduces intrusion into the passenger space, minimising the likelihood of occupant injuries.

Fiesta CL

From its sporty contour design to its sexy headlights, palette of eye-catching colours and technological features like iPod connectivity, it's all about style and confidence.



Fiesta CL interior shown.



CL standard features:

- 1.6 Litre petrol engine
- Dynamic Stability Control (DSC)
- Driver and passenger airbags with right hand and left hand side curtain/thorax airbags, driver's knee airbag and driver and passenger Beltminder™
- 5-star ANCAP safety rating
- Bluetooth®* with Voice Control
- iPod connectivity^
- Air conditioning

#Bluetooth® is a registered trademark of Bluetooth SIG Inc., and is used under licence. ^iPod is a trademark of Apple Inc. Requires connection cable, sold separately.



Air-conditioning.

With its top-of-the-line air-conditioning system, you stay cool and comfortable even during the hottest of days and heaviest of traffic jams.



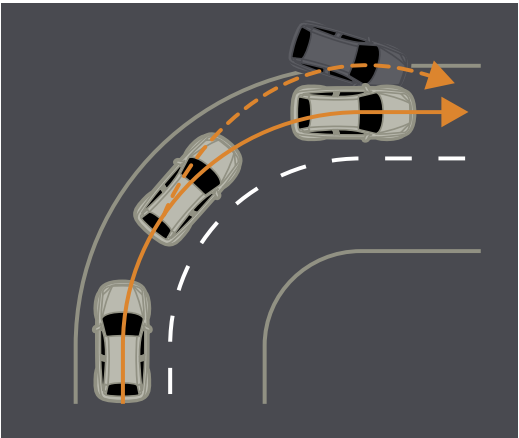
Bluetooth®* and Voice Control.

The Fiesta features an innovative Voice Control featuring Bluetooth® that lets you stay connected while keeping your hands on the wheel and your eyes on the road.



Australia's highest safety rating.

In addition to a long list of standard features, you have added peace of mind knowing the Fiesta has a 5-star ANCAP safety rating, a feature that is standard in every model.



Dynamic Stability Control.

Dynamic Stability Control (DSC) strengthens your connection to the road and helps you avoid the problems of oversteer and understeer.



Velvety smooth ride.

The Fiesta's sophisticated optional PowerShift® transmission offers the responsiveness of a manual transmission with the ease of an automatic, allowing for smoother gear changes.



iPod connectivity.^

Simply connect your iPod into the auxiliary jack and have access to all your favourite music wherever you're heading.

Fiesta LX

From its confident, bold design and tech filled interior to its 15" alloy wheels, everything about the Fiesta LX fuels your passion to drive.



Fiesta LX automatic interior shown.



All the features of the CL model with the addition of:

- Optional 1.6 Litre Diesel engine (Manual transmission only)
- 15 inch alloys wheels (set of four)
- Leather wrapped steering wheel
- Cruise control
- Rear power windows



Alloy wheels.*

With such a striking design, these distinctive alloy wheels give your Fiesta a real contemporary urban edge.

*Set of four.



Clever storage space.

When it comes to space, comfort and clever thinking, the Fiesta boasts plenty of convenient storage compartments.



Leather wrapped steering wheel.

The leather wrapped steering wheel adds a sporty feel to every driving experience.



Diesel economy.

Super low fuel consumption and significant savings at the fuel pump, what's not to like about the Fiesta LX diesel option?



Power windows.

Now you can quickly and simply control front and rear windows with the touch of a button.



Cruise control.

Whether it's the freeway or the highway, the freedom of the open road is more enjoyable thanks to the inclusion of cruise control.

Fiesta Zetec

The top-of-the-range Fiesta Zetec gives you a truly exhilarating drive, while inside you're surrounded by creature comforts and smart technology.



Fiesta Zetec interior shown.



All the features of the LX model with the addition of:

- 16 inch alloy wheels~
- Sports bodykit
- Sports suspension
- Front fog lamps
- Sports seats
- USB†/iPod integration^

~Set of four. ^iPod is a trademark of Apple Inc. Requires connection cable, sold separately. †USB input facility available only on Fiesta Zetec.



16" alloy wheels.~

Designed in Europe, these eye-catching 16" alloy wheels add another visual dimension to your Fiesta Zetec.



Sports body kit.

The impressive body kit enhances the Fiesta's sporty exterior with a muscular edge, giving you extra style points.



iPod integration.^

Take your library of tunes wherever the road takes you and enjoy the convenience of controlling your iPod using the car's unique audio controls.



Music to your ears.

Simply plug your USB† stick into the port, and you can then control the MP3s on your USB through Fiesta's audio controls. What could be easier?



Comfort and style.

The body-hugging sports seats delivers maximum comfort and the ergonomic support for you and your front passenger.



Sports suspension.

You'll enjoy an even smoother ride thanks to sports suspension, which combines precise steering control and manoeuvrability with excellent levels of comfort.

Fiesta vehicle range

In addition to bold, sleek looks, a truly high-tech interior and sharp, zippy performance, the Ford Fiesta range gives you loads of options, accessories and a vibrant colour range that'll really catch your eye. No matter what your lifestyle, the Fiesta range has a vehicle that's just perfect for you.



FIESTA CL

FIESTA LX

FIESTA ZETEC

Colour your world

You can enhance the look and feel of your Fiesta with your choice of vibrant seat trims and colours.

EXTERIOR COLOURS



Arctic White



True Red



Metropolitan Grey*



Black Mica*



Chilli Orange*



Highlight Silver*



Aurora Blue*

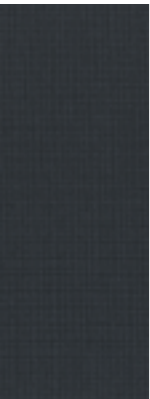


Phantom Purple*

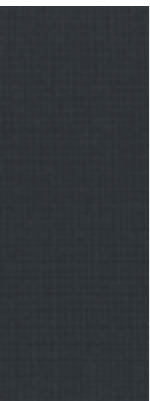


Phantom Blue*

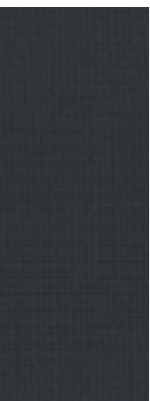
INTERIOR TRIMS



CL.
'Vario' cloth trim in Syracuse with 'Mondus Max' Syracuse bolsters.



LX.
'Serk' cloth trim in Fairland with 'Mondus Max' Syracuse bolsters.



Zetec.
'Dotts' embossed cloth trim in Syracuse with 'Mondus Max' Syracuse bolsters. Fairland top stitch detailing on front and rear seat trim.

WHEELS



CL
15" x 6" steel wheel



LX
15" x 6" alloy wheel



ZETEC
16" x 6" alloy wheel

*Prestige paint is an option that incurs an additional charge.

Fiesta Zetec shown for illustrative purposes.



Fiesta decal.

Body side decal suits all vehicle colours and adds a splash of style.

Personalise your Fiesta. The choice is yours.

The Ford Vehicle Personalisation accessory range lets you personalise your Fiesta to perfectly suit your needs.

Accessories

Exterior styling	CL	LX	ZETEC
16" alloy wheels ¹	A	A	A
CSA - alloy wheels ^{1, 2, 3, 4.}	A	A	A
Spoiler	A	A	S
Fiesta decal	A	A	A
Decal bodyside tattoo	A	A	A
Fiesta branded fuel lid (hatch) ⁵	A	A	A
Body styling front skirt & diffuser	A	A	S
Body styling grille	A	A	S
Body styling rear skirt (hatch) ⁵	A	A	S
Exterior protection			
Bonnet protector	A	A	A
Headlamp guards	A	A	A
Mudspats ⁶	A	A	–
Weathershields - Bubble (front set of 2)	A	A	A
Weathershields - Slimline (set of 4)	A	A	A
Interior styling			
Illuminated gear knob (manual only)	A	A	A
Gear knob leather - black, blue or red (manual only)	A	A	A
Front door scuff plates - stainless steel (hatch) ⁵	A	A	A
Front door scuff plates - illuminated (hatch) ⁵	A	A	A
Handbrake cover - black, blue or red	A	A	A
Steering wheel - blue or red	A	A	A
Alloy sports pedals (manual only)	A	A	A
Interior comforts & storage			
Anti-slip luggage compartment mat ⁵ (hatch)	A	A	A
Foldable luggage compartment mat ⁵ (hatch)	A	A	A
Boot scuff guard	A	A	A
Premium carpet mats (set of 4)	A	A	A

Interior comforts & storage (continued)	CL	LX	ZETEC
Cargo organiser	A	A	A
Cargo swing net	A	A	A
Umbrella storage	A	A	A
In car entertainment & electrical			
Child activity organiser	A	A	A
DVD/CD wallet	A	A	A
Auxiliary audio plug in cable	A	A	A
iPod® USB Integration cable ⁷	–	–	A
Fridge 'Day Tripper' 15 litre	A	A	A
Garmin Nuvi® portable satellite navigation systems ²	A	A	A
Garmin Nuvi® portable satellite navigation system accessories ²	A	A	A
Safety			
Go Technologies® reversing camera ²	A	A	A
Towing and carrying			
Carry bars	A	A	A
Carry bars accessory - ski/snowboard carrier ⁸	A	A	A
Rhino-Rack® carry bars ⁸	A	A	A
Rhino-Rack® bike carrier ^{2, 8}	A	A	A
Rhino-Rack® luggage carrier ²	A	A	A
Rhino-Rack® luggage bag ²	A	A	A
Towpack (hatch) ⁹	A	A	–
Mini 14" spare wheel	A	A	A

S = Standard. A = Accessory that can be added at any time. – = Not available.

1. Wheels and tyres sold separately. 2. This accessory is a Supplier Branded Accessory and is not manufactured or warranted by Ford. The warranty is provided by the manufacturer of the accessory. 3. It is recommended that tyres matching original equipment specifications be fitted to CSA alloy wheels. 4. For more information on this product visit us at www.ford.com.au 5. Available on hatch models only. 6. Front and rear sets sold separately. 7. iPod is a trademark of Apple Inc. 8. Attaches to Genuine Ford carry bars (sold separately). 9. Subject to State and Territory regulations.



16" alloy wheels.

Designed in Europe, these distinctive alloy wheels give your Fiesta an even sportier edge.



Carry bars.

Essential addition for carrying outdoor gear such as bikes, skis and fishing rods.



Sports body kit.

The impressive large rear spoiler enhances the Fiesta's sporty exterior, giving you extra style points.



Steering wheel.

Personalise and enhance the look of your Fiesta. Matching gear knob and handbrake lever also available.



Portable Satellite Navigation Systems.

Portable navigation systems are available in a range of models to help you stay on track.



iPod connection cable.⁷

Dedicated connector cable provides connectivity for iPod.⁷ Allows you to listen and control your iPod from audio controls on Zetec's dash and steering wheel. Audio input cable also available for CL and LX.

Mechanical specifications

Engine type	Duratec 1.6L Ti-VCT DOHC	Duratorq 1.6L DV6 Diesel (Available in LX and Zetec models only)		
Maximum power output ISO (kW/rpm)	88kW @ 6300rpm ¹	66kW @ 4000rpm		
Maximum torque ISO (Nm/rpm)	151Nm @ 4300rpm ¹	200Nm @ 1750rpm		
Fuel				
Fuel type	91 - 98 RON ²	Diesel		
Fuel consumption L/100 km (ADR 81/02 combined cycle) ³	6.1	4.4		
CO ₂ emissions (g/km) ³	146	117		
Emission level	Euro 4	Euro 4		
Fuel tank capacity (litres)	43	43		
Ford Easy Fuel® ⁴ .	S	S		
Luggage capacity (L)		CL Hatch	LX Hatch	Zetec Hatch
Seats upright		295	295	295

Specifications and options

Engine and transmission	CL Hatch	LX Hatch	Zetec Hatch
Duratec 1.6L Ti-VCT DOHC 4 cylinder 16V engine 5-speed manual	S	S	S
Duratec 1.6L Ti-VCT DOHC 4 cylinder 16V engine 6-speed PowerShift [®] automatic	O	O	O
Duratorq 1.6L 4 cylinder DV6 Diesel engine 5-speed manual	–	O	O
Ride and handling			
Sports suspension	–	–	S
15" x 6" Steel wheels and full covers with 185/55 R15 tyres (set of 4)	S	–	–
15" x 6" alloy wheels with 185/55 R15 tyres (set of 4)	–	S	–
16" x 6" alloy wheels with 195/50 R16 tyres (set of 4)	–	–	S
Temporary Mobility Kit ⁵	S	S	S
Interior			
Air-conditioning	S	S	S
Driver and passenger vanity mirror (with flip up cover and ticket strap)	S	S	S
Shoe stowage compartment under front passenger seat	S	S	S
Cruise control	–	S	S
Power front windows with driver one touch up/down	S	S	S
Power rear windows	–	S	S
Driver's footrest	S	S	S

Interior (continued)	CL	LX	Zetec
3-spoke leather wrapped steering wheel	–	S	S
Electric power assisted steering	S	S	S
Digital clock in audio display	S	S	S
Trip computer - distance to empty, average fuel economy, average speed, outside temperature	S	S	S
Exterior			
Prestige paint	O	O	O
Body coloured, power exterior mirrors	S	S	S
Turn indicators in side mirror	S	S	S
Body colour rear spoiler	S	S	S ⁶
Sports bodykit ⁷	–	–	S
Chrome finish on upper door line	–	–	S
Tinted glass	S	S	S
Seating			
Driver's seat manual height adjust	S	S	S
Cloth trim	S	S	–
Sports cloth trim	–	–	S
Audio			
AM/FM radio, single CD with MP3 capability and 6 speakers	S	S	S
Bluetooth [®] hands free compatibility ⁸	S	S	S
Voice control system that allows you to control a number of vehicles functions	S	S	S
Steering wheel mounted audio controls	S	S	S
3.5mm auxiliary audio input ⁹	S	S	S
USB input facility for music files and MP3 player integration ⁹	–	–	S
Safety and security			
ANCAP 5-star rating	S	S	S
Driver and front passenger airbags	S	S	S
Left hand and right hand side curtain/thorax airbags and driver's knee airbag	S	S	S
Anti-Lock Braking System (ABS) with Electronic Brakeforce Distribution (EBD)	S	S	S
Dynamic Stability Control with Emergency Brake Assist and Traction Control ¹⁰	S	S	S
Front seat belts: 3-point active seatbelts with pretensioners and driver Beltminder [™] System	S	S	S
Passenger Beltminder [™] System	S	S	S
Remote central locking with flip key and spare key	S	S	S
'Greeting' headlamp feature	S	S	S
Perimeter alarm	–	–	S
Engine immobiliser	S	S	S

S = Standard. O = Options that can be ordered before a vehicle is manufactured. A = Accessory that can be added at any time. – = Not available.

1. All performance data for petrol models measured using 95RON fuel. 2. For optimal performance use fuel of 95RON or higher. 3. Figures obtained from controlled tests using ADR 81/02 (combined). Actual fuel consumption and emissions will depend on many factors including driving habits, prevailing conditions and your vehicle's equipment, condition and use. 4. Capless refuelling with misfuel inhibitor. 5. When in use, do not exceed 80km/h and ensure the standard wheel and tyre are fitted as soon as possible. 6. Zetec model spoiler differs from CL and LX models. 7. Including: Front bumper skirt, Rear bumper skirt, Sideskirts, Sports grille, Large rear spoiler. 8. Bluetooth[®] is a registered trademark of Bluetooth SIG Inc., and is used under licence. Please refer to ford.com.au for mobile phone compatibility. 9. Connection cables sold separately. Refer to <http://www.ford-mobile-connectivity.com/> for compatibility. 10. Dynamic Stability Control is also known as Electronic Stability Control.



Fiesta LX shown in Phantom Blue.



Quality

We design and build your Ford to feel as good after many years of service as it did the day you picked it up. And to drive just as beautifully, too.



Sustainability

Using advanced technology, we're committed to creating vehicles with improved fuel economy, reduced CO₂ emissions and a lower overall cost of ownership.



Safety

Ford's Intelligent Protection System uses sophisticated technology designed to help prevent an accident and, if one should happen, to help protect you.



Smart

Vehicles with smart, intuitive technologies designed to connect you to your world and many clever solutions that make life a little easier.

Speak to your Ford Dealer today about how we can help you make the most out of your vehicle ownership experience.

3 year/100,000km new car warranty.#

For three years or 100,000km, whichever comes first, your Ford is covered against any defects in factory materials or workmanship. This also applies to Genuine Ford Accessories you may have had fitted before you took delivery.

5 year warranty against perforation corrosion.#

It's reassuring to know that the original body of your gleaming new Ford is guaranteed against perforation corrosion for the first five years of its life. If perforation corrosion occurs, we'll fix it for free.

myFord Warranties and Insurance.

When you first turn the key of your brand new Ford you want to do so without a care in the world. Our range of myFord products gives you that extra peace of mind. For more information about myFord Warranties and Insurance, visit your participating Ford Dealer for further details on the plans that best suit your needs. Terms, conditions and eligibility criteria apply.

12 months/15,000km service intervals.

Under normal driving conditions service intervals are 12 months or 15,000km, whichever occurs first.

Running a fleet?

Our Ford Fleet team is available to assist fleet customers with information on Ford products and services. Call 1300 13 13 30 or email askfleet@ford.com

Want to contact us?

For answers to your questions, or help with any concern, contact our Customer Relationship Centre on 13 FORD (13 3673) or email customers@fordcrc.com.au

Visit us on the web.

If you want more information on Ford or our entire product range, visit us at ford.com.au

myFord Capped Price Servicing.

Your new Ford vehicle now gives you access to myFord Capped Price Servicing, which means it makes even more sense to have your Ford looked after by the people who know your Ford back to front, inside and out. With myFord Capped Price Servicing, Ford will publish the maximum price you will pay for a standard A or B logbook service at participating Authorised Ford Dealers for all vehicles built from 2007 up to 6 years or 105,000 kilometres, whichever comes first.

In addition, when vehicles are serviced under myFord Capped Price Servicing, Retail and Small Business Customers will also receive 12 months myFord Standard Roadside Assistance (RRP \$90).

For more details visit your local Ford Dealer or visit www.ford.com.au/myfordcps for full terms and conditions.



Click to Request



Quote



Hot Deals



Test Drive

#Conditions and exclusions apply. For more information visit ford.com.au/newvehiclewarranties

This brochure details specifications and features of the WT Fiesta. Please consult your Ford Dealer for the most recent specifications and availability information.

This brochure is designed to provide you with a general introduction to the Ford Products (including available optional equipment) referred to, and should be read in conjunction with the latest specification sheet. Because of changes in conditions and circumstances Ford* reserves the right, subject to all applicable laws, at any time, at its discretion, and without notice, to discontinue or change the features, designs, materials, colours and other specifications and the prices of its products, and to either permanently or temporarily withdraw any such products from the market without incurring any liability to any prospective purchaser or purchasers. The latest specification sheet should be referred to for information on the availability, ordering and use of optional equipment. Always consult an authorised Ford Dealer for the latest information with respect to features, specifications, prices, optional equipment and availability before deciding to place an order.

*FORD MOTOR COMPANY OF AUSTRALIA LIMITED. (A.B.N. 30 004 116 223) Registered Office: 1735 Sydney Road, Campbellfield, Victoria 3061, Australia. Printed September, 2012. FIESTA0089. WT Fiesta Brochure. FRD001546.

Go Further

ford.com.au