

2012 **ESCAPE+HYBRID**



Drive one.



7.1L/100 km HWY | **40 MPG¹**
9.1L/100 km CITY | **31 MPG¹**



We believe in lots of fun – and fuel efficiency.

Already dreaming up your next road trip? Perfect. Grab the keys to a Ford Escape and get going. We're serious about fuel efficiency, so this sporty 5-passenger small utility gives you 7.1L/100 km (40 mpg) hwy¹ with its standard 2.5L 4-cylinder engine. Escape Hybrid gets the best fuel efficiency of any SUV in Canada at 5.8L/100 km (49 mpg) city.¹ Escape also fulfills our promise of leading-edge technology. You can take calls and summon songs with both hands on the wheel.² It even steers itself into parallel parking spots.² And it's available with Intelligent 4WD.² The 2012 Ford Escape. Drive one today.

Limited. Black. Available equipment

¹7.1L/100 km hwy and 9.1L city (40 mpg hwy/31 city) for Escape FWD with 2.5L 4-cylinder and manual transmission. 5.8L/100 km city and 6.5L hwy (49 mpg city/43 hwy) for Escape Hybrid FWD. Fuel consumption ratings based on Transport Canada approved test methods. Actual fuel consumption may vary. Excluding vehicles built for Mazda. See specifications for details. ²Available feature.



Drive one.

2012 **ESCAPE+HYBRID** ford.ca



5.8 L/100 km CITY | **49** MPG¹
6.5 L/100 km HWY | **43** MPG¹



Conserves resources like no other SUV.¹

It doesn't get any better than the most fuel-efficient SUV in Canada.¹ Escape Hybrid doesn't have to use any gas to operate at speeds of up to 70 km/h or when it's stopped in traffic. Plus, the powertrain automatically recharges itself, so it never needs to be plugged in. The 2.5L 4-cylinder Atkinson-cycle engine works with the electric traction motor to create plenty of horsepower: 177 net. When passing or merging, the hybrid drive mode even gives you an extra power boost to ensure a lively performance.

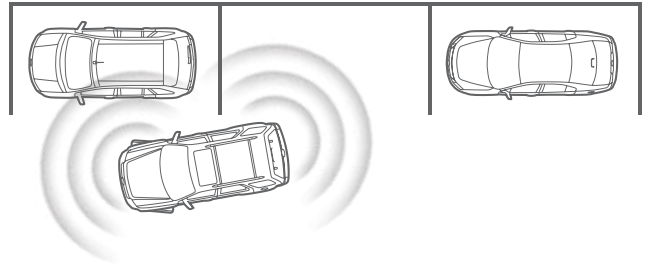
Hybrid Limited. Ingot Silver Metallic. Available equipment.

¹5.8L/100 km city and 6.5L hwy (49 mpg city/43 hwy) for Escape Hybrid FWD. Fuel consumption ratings based on Transport Canada approved test methods. Actual fuel consumption may vary. Excluding vehicles built for Mazda. See specifications for details.



Drive one.

2012 **ESCAPE+HYBRID** ford.ca



Steers you into the sweet spot.

That's right. First, active park assist¹ uses ultrasonic sensors to help you locate the perfect parallel parking spot. Then, you take your hands off the wheel and your Escape steers itself into place. You simply follow system prompts to shift gears and control the brake and accelerator pedals. The vehicle can be parked in as little as 24 seconds. Available exclusively on Escape Limited and Hybrid Limited.

Limited. White Suede. Available equipment.

¹Available equipment.



Drive one.

2012 **ESCAPE+HYBRID** ford.ca

Comforts body and mind.

Escape comfortably seats up to 5 with ease. Another reason to feel good in here: The seat cushions contain environmentally friendly soy-based foam that helps conserve limited resources and reduce CO₂ emissions. Supple leather trim (shown) with heated front seats, plus gleaming chrome and black accents, are standard on Escape Limited and Hybrid Limited. No matter which model you choose, Escape is bound to be the perfect fit for your adventures.



Promotes smart driving.

Our exclusive MyKey™ allows you to program ignition keys with reminders to drive at appropriate speeds, keep the audio volume low and more, including limiting the vehicle's top speed and muting the audio system until front safety belts are fastened.



Keeps you connected to your world.

Hands-free calls and music.

No more searching for your phone or media player. No device on your ear. With voice-activated Ford SYNC,^{®1} you just touch a button on the steering wheel and say things like "Call Melissa," or "Play genre: Pop." Once paired, the system recognizes your phone and automatically transfers your contacts to support voice calling. SYNC also includes 911 Assist.[™]

Full-colour travel guide.

The voice-activated Navigation System² features a vibrant 6.5" LCD touch screen with interactive maps you can zoom and scroll. Play DVDs while Escape is in Park, store nearly 10 gigs of your digital music and much more with this easy-to-use system.

Boundless entertainment.

Sirius[®] Satellite Radio³ comes with a 6-month prepaid subscription. Surf up to 120 channels including 100% commercial-free music, plus the best sports, news, talk and entertainment – all across Canada.

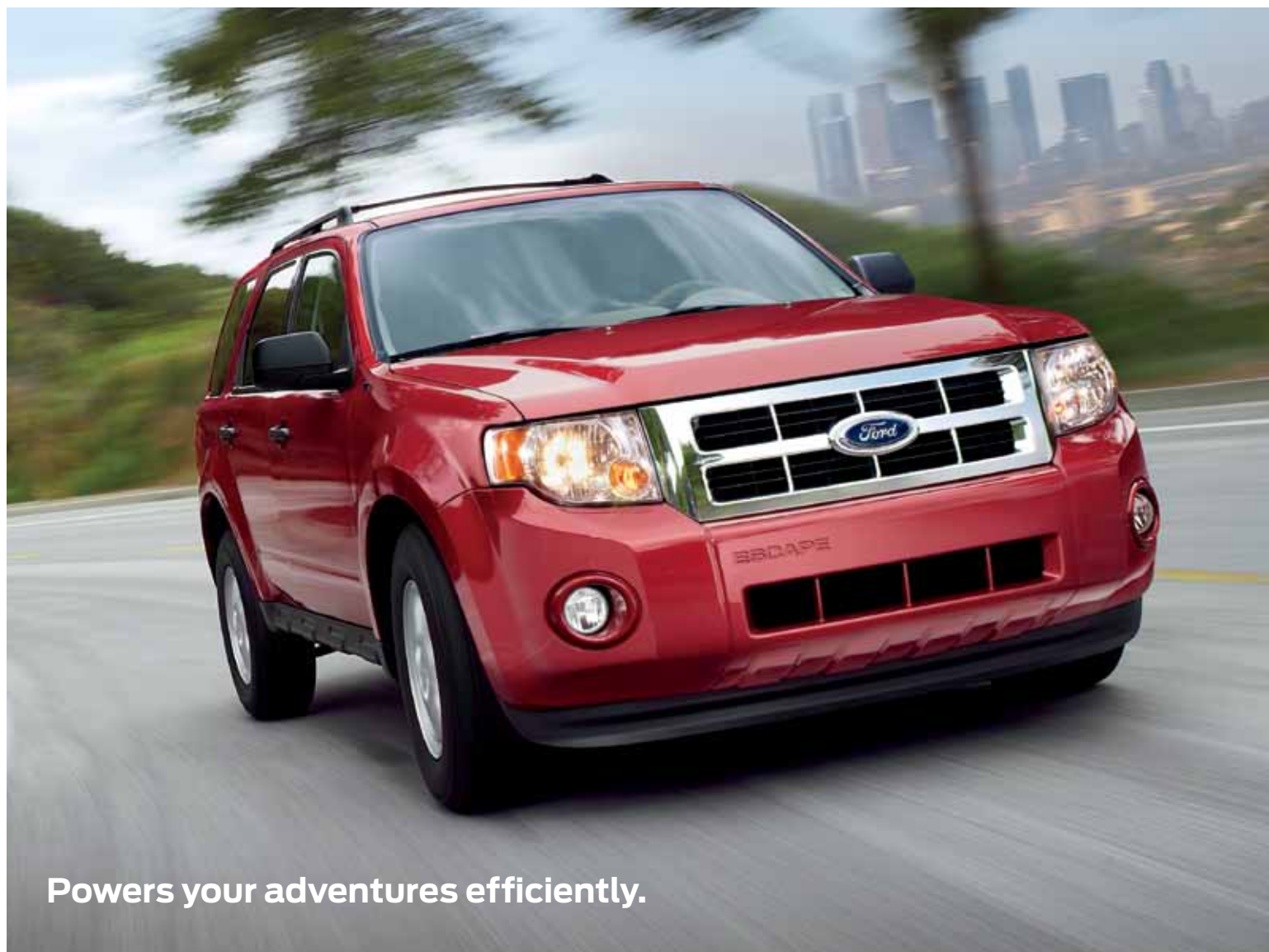
Limited. Charcoal Black leather trim. Available equipment.

¹Available feature. Some mobile phones and some digital media players may not be fully compatible. Driving while distracted can result in loss of vehicle control. Only use mobile phones and other devices, even with voice commands, when it is safe to do so. SYNC voice recognition available in English, French and Spanish. ²Available feature. Coming Fall 2011. ³Available feature. Sirius Satellite Radio subscriptions sold after prepaid period expires. Subscriptions are governed by Sirius Customer Agreement; see sirius.ca.



Drive one.

2012 **ESCAPE+HYBRID** ford.ca



Powers your adventures efficiently.

Gas engines sip and zip.

The standard 2.5L Duratec® 4-cylinder engine delivers a remarkable 7.1L/100 km (40 mpg) hwy and 10.0L/100 km (28 mpg) city¹ when paired with the 6-speed automatic transmission² and front-wheel drive. It also supplies a spirited 171 horsepower and 171 lb.-ft. of torque. Since the 3.0L Duratec V6 engine² is flex fuel capable, you can run it on gasoline, E85 (85% ethanol and 15% gasoline), or any blend of the two. Mated to the efficient 6-speed automatic, it cranks out 240 horsepower and tows up to 1,588 kg (3,500 lbs.) when properly equipped. You can tow with confidence thanks to trailer sway control.² When trailer sway is detected, it automatically reduces engine speed and selectively applies the brakes to help you maintain control of both the vehicle and the trailer.³

Easy Fuel keeps it clean.

Our industry-first Easy Fuel® capless fuel filler, standard on all models, automatically seals shut when you remove the fuel nozzle. There's no messy cap to deal with or lose – just gas up and go. It also helps reduce evaporative emissions.

XLT. Toreador Red Metallic. Available equipment.

¹Fuel consumption ratings based on Transport Canada approved test methods. Actual fuel consumption may vary. See specifications for details. ²Available feature. ³Remember that even advanced technology cannot overcome the laws of physics. It's always possible to lose control of a vehicle due to inappropriate driver input for the conditions.



Drive one.

2012 **ESCAPE+HYBRID** ford.ca



Transports you to places others only imagine.

Every Escape is naturally nimble thanks to a fully independent suspension and outstanding ground clearance. Add our Intelligent 4WD¹ and let the all-terrain adventures begin. Always on and always working, it automatically monitors traction 200 times per second (much faster than any person could) and adjusts torque distribution as needed.

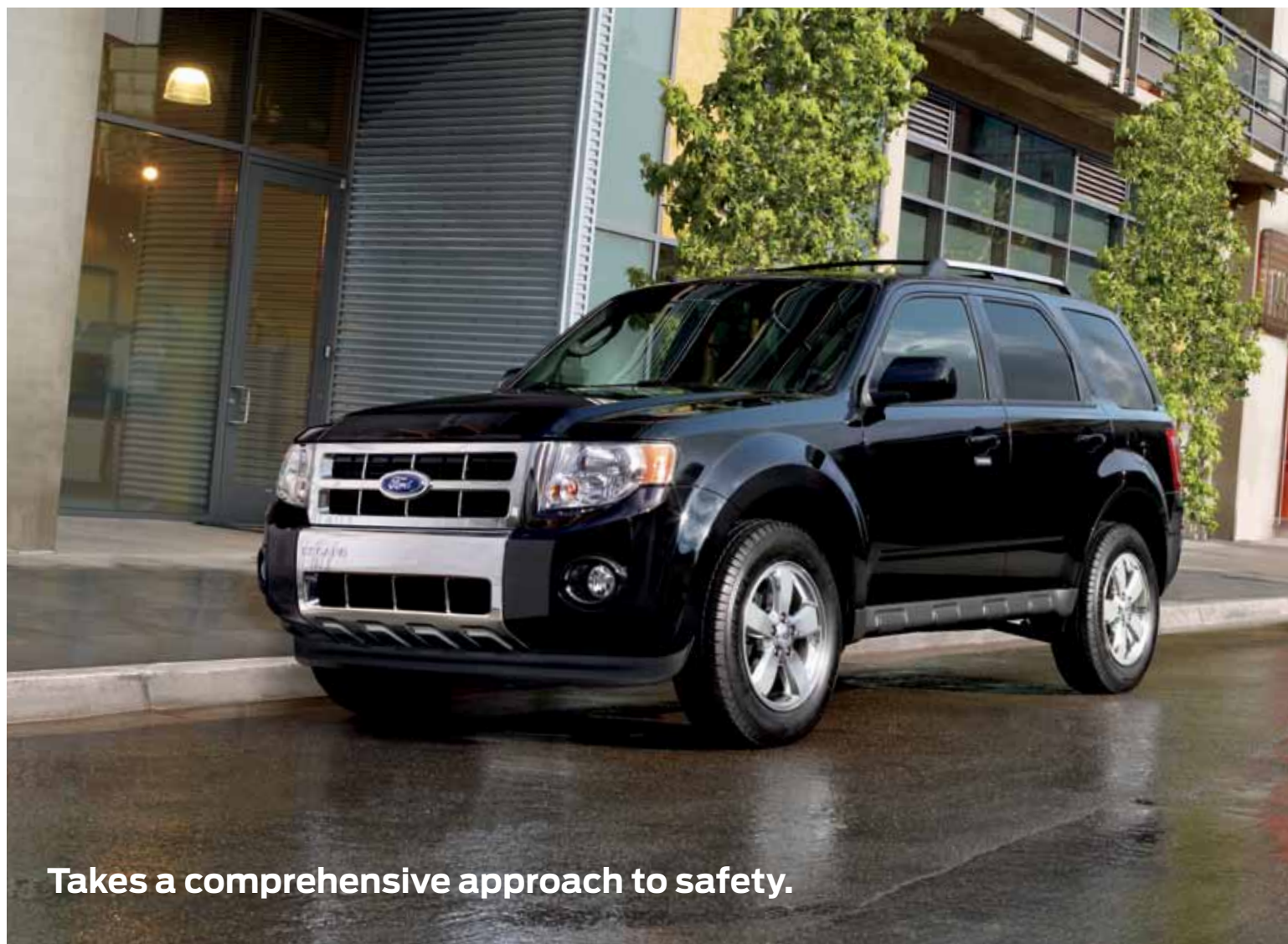
Escape XLT. Ingot Silver Metallic. Available equipment.

¹Available feature.



Drive one.

2012 **ESCAPE+HYBRID** ford.ca



Takes a comprehensive approach to safety.

Masters challenging moments.

Our standard AdvanceTrac® with RSC® (Roll Stability Control™) uses 2 gyroscopic sensors to help keep all 4 wheels firmly planted.¹ It automatically enhances vehicle control in wet or slippery conditions.

Personalizes your protection.

The advanced Personal Safety System™ uses sophisticated sensors to optimize deployment of the dual-stage front airbags in certain frontal collisions. Front-seat side airbags deploy in certain side-impact collisions. And our Safety Canopy® System increases protection with a rollover sensor and side-curtain airbags.

Clears up blind spots.

Each standard sideview mirror features an integrated convex blind spot mirror that helps identify vehicles and objects nearby so you can avoid them.

Sends an SOS for you.

So that you and your passengers can be easily located, our SOS Post-Crash Alert System™ will automatically flash the hazard lights and sound the horn after an airbag has deployed or a safety belt pretensioner has activated in certain collisions.²

Directly contacts 911.

Ford SYNC®³ with 911 Assist™ uses your paired mobile phone to call 911 in the event of a crash that results in airbag deployment or fuel pump shutoff.⁴ If needed, it can even give the operator an urgent message for you.

Limited. Black. Available equipment.

¹Remember that even advanced technology cannot overcome the laws of physics. It's always possible to lose control of a vehicle due to inappropriate driver input for the conditions. ²SOS hardware may become damaged or the battery may lose power in a crash, which could prevent operation. Not all crashes will activate an airbag or safety belt pretensioner. ³Available feature. ⁴The vehicle's electrical system (including the battery), the wireless service provider's signal and a connected mobile phone must all be available and operating for 911 Assist to function properly. These systems may become damaged in a crash. The paired mobile phone must be connected to SYNC, and the 911 Assist feature enabled, in order for 911 to be dialed.



2012 **ESCAPE+HYBRID** ford.ca

Lots of ways to make it yours.



Take advantage of versatile standards to make your life easier. Store your stuff out of sight. Even transport your bike inside. You can also add options to let more sunshine in, show off your style, warm up your vehicle from afar and so much more. Create the Escape you want, just the way you want it.

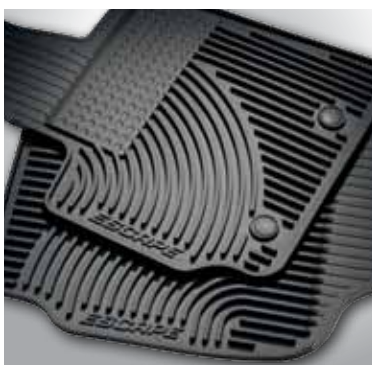
Centre floor console
Power moonroof¹
17" chrome-clad aluminum wheels¹
Power Code™ Remote Start System¹
1,903 litres (67.2 cu. ft.) of cargo space

¹Available feature.



Drive one.

2012 **ESCAPE+HYBRID** ford.ca



Create a more meaningful driving experience: Connect with Ford Custom Accessories for authentic personalization possibilities. The cost of select accessories – ordered and paid for at the time you buy or lease your Escape – can be rolled into your monthly payment. And coverage for select accessories falls under the New Vehicle Limited Warranty. See your Ford of Canada Dealer for details.

XLT in Toreador Red Metallic customized with smoked hood and side window deflectors, moulded front and rear splash guards, roof-mounted crossbars, roof-mounted cargo box by THULE® and rear spoiler

Interior light kit

All-weather floor mats

Rear spoiler

Keyless entry keypad

ESCAPE Standard Features



Mechanical

4-wheel independent suspension
66-litre fuel tank capacity (57-litre on Escape Hybrid)
Electric power-assisted steering
Engine block heater
Front and rear stabilizer bars
Front-wheel drive (FWD)
Intelligent 4WD System (4WD models only)
Power front disc/rear drum brakes with Anti-Lock Brake System (ABS)

Seating

Front bucket seats
60/40 split-fold rear bench seat with tip-fold-flat latches

Interior

2 powerpoints (1 in each row)
Accessory delay
Auxiliary audio input jack
Covered visor vanity mirrors
Cruise control
Floor console with removable interior bins and 2 cupholders
Front and rear colour-keyed carpeted floor mats
Illuminated Entry System
Power door locks with child-safety rear door locks
Power windows with one-touch-down driver's side window feature
Sirius Satellite Radio with 6-month prepaid subscription
Tachometer
Tilt steering column

Exterior

Automatic headlamps
Easy Fuel® capless fuel filler
Fog lamps
Liftgate with flip-up glass
Power, heated sideview mirrors with integrated blind spot mirrors and manual fold-away design
Privacy glass (rear doors, quarter windows and rear window)
Rear-window defroster
Roof-rack side rails
Windshield wipers – Front: variable-intermittent with washer; rear: 2-speed with washer

Safety & Security

3-point safety belt restraint system for all seating positions
Adjustable head restraints at all 5 seating positions
AdvanceTrac® with RSC® (Roll Stability Control™)
Belt-Minder™ front safety belt reminder
Front height-adjustable shoulder safety belts
Front-seat side airbags¹
Integrated key transmitter remotes (2)
LATCH – Lower Anchors and Tether Anchors for Children (rear seating positions)
MyKey™
Personal Safety System™ for driver and front passenger – Includes dual-stage front airbags¹ safety belt pretensioners, safety belt energy-management retractors, safety belt usage sensors, driver's seat position sensor, crash severity sensor, restraint control module and Front-Passenger Sensing System
Safety Canopy® System with side-curtain airbags¹ and rollover sensor
SecuriCode™ keyless entry keypad
SecuriLock® Passive Anti-Theft Engine Immobilizer System
SOS Post-Crash Alert System™
Tire Pressure Monitoring System (excludes spare)

XLT

FWD or 4WD

Includes all standard features, plus:

Mechanical

2.5L Duratec® 4-cylinder engine
5-speed manual transmission (FWD)
6-speed automatic transmission (4WD)

Seating

6-way power driver's seat
Premium-grade cloth seats

Interior

Air conditioning
AM/FM stereo/single-CD player with 4 speakers
Message centre

Exterior

16" cast-aluminum wheels with P235/70R16 all-season BSW tires
Black door handles, roof-rack side rails and heated sideview mirrors
Chrome upper grille, body-colour lower grille
Roof-rail crossbars

Horsepower, Torque & Towing Capability kg (lbs.)²

Escape			
2.5L Duratec 4-cyl.	Horsepower: 171 @ 6,000 rpm	Torque (lb.-ft.): 171 @ 4,500 rpm	Max. Towing: 680 (1,500)
3.0L Duratec V6	Horsepower: 240 @ 6,550 rpm	Torque (lb.-ft.): 223 @ 4,300 rpm	Max. Towing: 1,588 (3,500)³
Hybrid			
2.5L 4-cyl. Atkinson-cycle	Horsepower: 153 @ 6,000 rpm	Torque (lb.-ft.): 136 @ 4,500 rpm	
Electric motor	Horsepower: 94 @ 5,000 rpm	Torque (lb.-ft.): 152 @ 4,250 rpm	
System net	Horsepower: 177		

Estimated Fuel Consumption Ratings⁴ L/100 km (mpg)			
Engine	Transmission	FWD City/Hwy	4WD City/Hwy
2.5L	5-speed manual	9.1 (31)/7.1 (40)	—/—
2.5L	6-speed automatic	10.1 (28)/7.1 (40)	10.2 (28)/7.4 (38)
3.0L	6-speed automatic	10.9 (26)/8.0 (35)	11.5 (25)/8.7 (32)
Hybrid	eCVT	5.8 (49)/6.5 (43)	6.6 (43)/7.3 (39)

¹Always wear your safety belt and secure children in the rear seat. ²Maximum capacity shown is for properly equipped vehicle with required equipment and a 68-kg (150-lb.) driver. Weight of additional options, equipment, passengers and cargo must be deducted from this weight. For additional information, see your Ford of Canada Dealer. ³With Class II Trailer Tow Prep Package. ⁴Fuel consumption ratings based on Transport Canada approved test methods. Actual fuel consumption may vary.

ESCAPE Standard Features



Limited

4WD

Includes select XLT features, plus:

Seating

Heated front bucket seats

Leather-trimmed seats

Interior

Ambient lighting

AM/FM stereo/single-CD player with 7 speakers including subwoofer

Auto-dimming rearview mirror

Black centre stack finish

Chrome finish on interior door handles, air vent bezels and shifter insert

Compass and outside temperature displays

Dual-zone electronic automatic temperature control

Ford SYNC® voice-activated, in-vehicle connectivity system

Illuminated visor vanity mirrors

Leather-wrapped steering wheel with secondary audio controls

Lockable wet trunk

Power moonroof

Retractable cargo area cover

Universal garage door opener

Exterior

16" bright-machined aluminum wheels with P235/70R16 all-season BSW tires

Body-colour door handles and heated sideview mirrors

Chrome upper and lower grilles, liftgate garnish and roof-rail inserts

Reverse Sensing System

Hybrid

FWD or 4WD

Includes select XLT features, plus:

Mechanical

2.5L 4-cylinder Atkinson-cycle engine

Electronically controlled continuously variable transmission (eCVT)

Permanent-magnet AC-synchronous electric motor

330-volt nickel-metal-hydride (NiMH) battery pack

Regenerative Braking System

Interior

110-volt AC power outlet

Auto-dimming rearview mirror

Compass and outside temperature displays

Dual-zone electronic automatic temperature control

Illuminated visor vanity mirrors

Leather-wrapped steering wheel with secondary audio controls

Overhead console with sunglasses bin

Exterior

16" unique cast-aluminum wheels with P235/70R16 all-season BSW tires

Body-colour upper and lower grilles

Hybrid Limited

FWD or 4WD

Includes select Hybrid features, plus:

Seating

Heated front bucket seats

Leather-trimmed seats

Interior

Ambient lighting

AM/FM stereo/single-CD player with 7 speakers including subwoofer

Black centre stack finish

Chrome finish on interior door handles, air register bezels and shifter insert

Power moonroof

Retractable cargo area cover

SYNC voice-activated, in-vehicle connectivity system

Universal garage door opener

Exterior

16" bright-machined aluminum wheels with P235/70R16 all-season BSW tires

Body-colour door handles and heated sideview mirrors

Chrome upper and lower grilles, liftgate garnish and roof-rail inserts

Rear view camera

Reverse Sensing System

Exterior Dimensions			Interior – Front		Capacities	
mm (in.)	Escape FWD/4WD	Hybrid FWD/4WD	mm (in.)	Escape/Hybrid	litres (cu. ft.)	Escape/Hybrid
Wheelbase	2,619 (103.1)	2,619 (103.1)	Head room	1,026 (40.4)/1,026 (40.4)	Cargo Volume	
Length	4,437 (174.7)	4,437 (174.7)	Shoulder room	1,438 (56.6)/1,438 (56.6)		
Height – Excluding options	1,725 (67.9)/1,722 (67.8)	1,720 (67.7)	Hip room	1,354 (53.3)/1,354 (53.3)		
Width – Excluding mirrors	1,958 (71.1)	1,958 (71.1)	Leg room (max.)	1,057 (41.6)/1,057 (41.6)		
Width – Including mirrors	2,065 (81.3)	2,065 (81.3)	Interior – Rear		Behind front row	
Width – Mirrors folded	1,979 (77.9)	1,979 (77.9)			1,903 (67.2)/1,880 (66.4)	
Minimum running ground clearance	213 (8.4)	211 (8.3)			Behind rear row	
Liftover height	752 (29.6)/749 (29.5)	747 (29.4)/752 (29.6)			889 (31.4)/875 (30.9)	
Overhang – Front	856 (33.7)	856 (33.7)	Head room	996 (39.2)/996 (39.2)	Fuel capacity (litres)	
Overhang – Rear	960 (37.8)	960 (37.8)	Shoulder room	1,420 (55.9)/1,420 (55.9)	66/57	
Ramp breakover angle	19.0°/18.9°	18.7°	Hip room	1,247 (49.1)/1,247 (49.1)		
Angle of approach	19.4°/19.3°	19.5°/19.6°	Leg room (max.)	904 (35.6)/904 (35.6)		
Angle of departure	28.3°	27.8°/27.7°				

Dimensions may vary by trim level. Microsoft is a registered trademark of Microsoft Corporation. "Sirius," the Sirius dog logo, channel names and logos are trademarks of Sirius XM Radio Inc. Subscriptions governed by Sirius Terms and Conditions at sirius.ca. Power Code is a trademark of Code Systems, Inc. THULE is a registered trademark of Thule Sweden AB.

XLT



Sport Appearance Package.¹ Premium Charcoal Black cloth trim with available equipment. || Premium Stone cloth trim. || Overhead console.¹ || Single-CD player.



¹Available feature.



Drive one.

2012 **ESCAPE+HYBRID** ford.ca

Available Equipment Groups

Equipment Group 201A – **Convenience Group** includes dual illuminated visor vanity mirrors, compass and outside temperature displays, auto-dimming rearview mirror and overhead console

Equipment Group 202A – Includes all content of 201A + Ford SYNC® voice-activated, in-vehicle connectivity system + **Cargo Package** includes retractable cargo area cover and lockable wet trunk

Available Packages

Canadian Comfort Package includes leather-trimmed, heated front seats, leather-wrapped steering wheel, vinyl door-trim inserts and power moonroof (requires 202A)

Canadian Winter Package includes leather-trimmed, heated front seats, leather-wrapped steering wheel and vinyl door-trim inserts (requires 201A or 202A)

Cargo Package includes retractable cargo area cover and lockable wet trunk

Sport Appearance Package includes Black grille, lower front applique, sideview mirrors and liftgate spoiler; blacked-out headlamp treatment; 17" premium Black wheels with machined-finish outer rings and P225/65R17 all-season BSW tires; body-colour door handles and rocker mouldings; Charcoal Black cloth seating (Charcoal Black leather when ordered with Canadian Comfort Package or Canadian Winter Package); Black interior accents; chrome finish on interior door handles, air register bezels and shifter knob insert¹ (requires 201A or 202A)

Trailer Tow Prep Package includes Class II 1,588-kg (3,500-lb.) receiver, trailer sway control, and trailer wiring harness with 4-pin connector (V6 only)

Available Options

3.0L Duratec® V6 FFV engine (requires 6-speed automatic transmission)

6-speed automatic transmission (FWD)

17" chrome-clad aluminum wheels (not available with manual transmission or Sport Appearance Package)

Ambient lighting² (requires 201A or 202A)

Dual head restraint DVD Entertainment System – Dealer installed (requires 201A or 202A)

Front and rear all-weather floor mats

Integrated side step bars (not available with Sport Appearance Package)

Power Code™ Remote Start System²

Power moonroof (requires 202A)

Premium Sound System with single-CD player, clock and 7 speakers (requires 201A or 202A)

SYNC voice-activated, in-vehicle connectivity system

Available Ford Custom Accessories

Visit your Ford of Canada Dealer to shop the complete collection

Exteriors

XLT

	1	2	3	4	5	6
White Suede	1					
Ingot Silver Metallic	1		3	4		6
Sterling Grey Metallic	1		3	4		6
Gold Leaf Metallic		2	3		5	6
Toreador Red Metallic	1	2	3	4	5	6
Blue Flame Metallic	1		3	4		6
Steel Blue Metallic	1	2	3	4	5	6
Black	1	2	3	4	5	6



16" Cast-Aluminum Standard



17" Chrome-Clad Aluminum Optional



17" Premium Black with Machined-Finish Outer Ring Included on Sport Appearance Package

Exterior Colors

	White Suede
	Ingot Silver Metallic
	Sterling Grey Metallic
	Gold Leaf Metallic
	Toreador Red Metallic
	Blue Flame Metallic
	Steel Blue Metallic
	Black

Interior Colors

	Premium Stone Cloth Standard
	Premium Camel Cloth Standard
	Premium Charcoal Black Cloth Standard
	Stone Leather Optional (requires Canadian Comfort Package or Canadian Winter Package)
	Camel Leather Optional (requires Canadian Comfort Package or Canadian Winter Package)
	Charcoal Black Leather Optional (requires Canadian Comfort Package or Canadian Winter Package)



Sport Appearance Package.³ Ingot Silver Metallic with available equipment.

¹Available with Ingot Silver Metallic, Sterling Grey Metallic, Toreador Red Metallic, Steel Blue Metallic or Black exterior colours. Not available with 17" chrome-clad wheels, manual transmissions, integrated side step bars or full-size spare. Roof-rack side rails with crossbars not available with Sport Appearance Package unless equipped with moonroof. ²Not available with manual transmission. ³Available feature. Colours are representative only. See your Ford of Canada Dealer for actual paint/trim options.



Drive one.

2012 **ESCAPE+HYBRID** ford.ca

Limited



Charcoal Black leather trim with available equipment. || Retractable cargo area cover. || Lockable wet trunk. || Ford SYNC® || Heated front seats.



Drive one.

2012 **ESCAPE+HYBRID** ford.ca

Limited

Available Equipment Group

Equipment Group 301A – **Parking Technology Package** includes active park assist and rear view camera

Available Packages

Canadian Touring Package includes 17" chrome-clad aluminum wheels and voice-activated Navigation System¹

Trailer Tow Prep Package includes Class II 1,588-kg (3,500-lb.) receiver, trailer sway control, and trailer wiring harness with 4-pin connector (V6 only)

Available Options

3.0L Duratec® V6 FFV engine

17" chrome-clad aluminum wheels with P225/65R17 all-season BSW tires

Dual head restraint DVD Entertainment System – Dealer installed

Front and rear all-weather floor mats

Integrated side step bars

Power Code™ Remote Start System

Voice-activated Navigation System¹ with nearly 10-gigabyte hard drive and single-disc Premium Sound System (requires 301A)

Available Ford Custom Accessories

Visit your Ford of Canada Dealer to shop the complete collection

Exteriors

White Suede	1	2
Ingot Silver Metallic		2
Sterling Grey Metallic	1	2
Gold Leaf Metallic	1	2
Toreador Red Metallic	1	2
Steel Blue Metallic	1	2
Black	1	2



16" Bright-Machined Aluminum
Standard



17" Chrome-Clad Aluminum
Optional

Exterior Colors

	White Suede
	Ingot Silver Metallic
	Sterling Grey Metallic
	Gold Leaf Metallic
	Toreador Red Metallic
	Steel Blue Metallic
	Black

Interior Colors

	Camel Leather Standard
	Charcoal Black Leather Standard



Black with available equipment.

¹Coming Fall 2011.

Colours are representative only. See your Ford of Canada Dealer for actual paint/trim options.



Drive one.

2012 **ESCAPE+HYBRID** ford.ca

Hybrid+Hybrid Limited



Hybrid Limited. Stone leather trim with available equipment. || Hybrid Limited. Rear view camera. Navigation System.^{1,2} || 330-volt battery pack. || 110-volt AC power outlet. || Hybrid Limited. Ambient lighting.



¹Available feature. ²Coming Fall 2011.



Drive one.

2012 **ESCAPE+HYBRID** ford.ca

Hybrid+Hybrid Limited

Hybrid

Available Options

Dual head restraint DVD Entertainment System – Dealer installed

Ford SYNC® voice-activated, in-vehicle connectivity system

Integrated side step bars

Power Code™ Remote Start System

Power moonroof with sunshade and mini-overhead console

Premium Sound System with single-CD player, clock and 7 speakers

Voice-activated Navigation System¹ with nearly 10-gigabyte hard drive, single-disc Premium Sound System, and Hybrid Energy Flow and Power & Efficiency monitors

Hybrid Limited

Available Options

Active park assist

Dual head restraint DVD Entertainment System – Dealer installed

Integrated side step bars

Power Code Remote Start System

Voice-activated Navigation System¹ with nearly 10-gigabyte hard drive, single-disc Premium Sound System, and Hybrid Energy Flow and Power & Efficiency monitors

Available Ford Custom Accessories

Visit your Ford of Canada Dealer to shop the complete collection

Exteriors

White Suede

Ingot Silver Metallic

Lime Squeeze Metallic

Steel Blue Metallic

Black

Interiors

1

2



16" Unique Cast-Aluminum
Standard on Hybrid

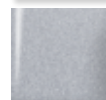


16" Bright-Machined Aluminum
Standard on Hybrid Limited

Exterior Colors



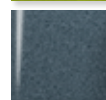
White Suede



Ingot Silver Metallic



Lime Squeeze Metallic



Steel Blue Metallic



Black

Interior Colors



Premium Stone Cloth
Standard on Hybrid



Stone Leather
Standard on Hybrid Limited



Hybrid Limited. Steel Blue Metallic.

¹Coming Fall 2011.

Colours are representative only. See your Ford of Canada Dealer for actual paint/trim options.



Drive one.

2012 **ESCAPE+HYBRID** ford.ca



QUALITY, GREEN, SAFE AND SMART.



Our commitment to you... Peace-of-Mind Protection

● Basic Coverage: 3 years/60,000 km ● Powertrain Limited Warranty: 5 years/100,000 km ● Corrosion Warranty: 5 years/unlimited distance ● Roadside Assistance: 5 years/100,000 km

Certain conditions apply. For more information on these warranties and coverages, ask your local Ford of Canada Dealer or visit ford.ca.

Ford Extended Service Plan. Help protect your investment and add to your peace of mind by complementing your vehicle purchase or lease with a Ford Extended Service Plan (ESP). Ford ESP protects you against unexpected repair costs after your New Vehicle Basic Warranty expires by covering many vehicle components. Enjoy the drive even more by complementing your ESP with a prepaid maintenance plan, which covers all required scheduled maintenance for your vehicle, plus 8 wear items. See your Ford of Canada Dealer for details. □ **Ford Credit.** Get the ride you want. Whether you plan to lease or finance, you'll find the choices that are right for you at Ford Credit. Ask your local Ford of Canada Dealer for details or check us out at fordcredit.ca. □ **Genuine Ford Accessories.** Ford of Canada warrants that its authorized Dealers will repair or replace any Genuine Ford Accessory that is properly installed by the authorized Dealer that sold the accessory and found to be defective in factory-supplied materials or workmanship. The accessory will be warranted for whichever provides you the greatest benefit: 12 months/20,000 km (whichever occurs first), or the remainder of your 36-month/60,000-km (whichever occurs first) Basic Coverage in the New Vehicle Limited Warranty. Contact your local Ford of Canada Dealer for details. □ **Ford Licensed Accessories (FLA)** are warranted by the accessory manufacturer's limited warranty. The warranty coverage will vary by accessory manufacturer. Ford Licensed Accessories are fully designed and developed by the accessory manufacturer and have not been designed or tested to Ford Motor Company engineering requirements. Contact your local Ford of Canada Dealer for details regarding the accessory manufacturer's limited warranty and/or for a copy of the FLA product limited warranty offered by the accessory manufacturer. □ **For prompt, courteous answers to your questions: Ford Customer Relationship Centre 1-800-565-3673; Ford Credit Customer Service Centre: 1-877-636-7346.**

Competitive comparisons are based on 2011/2012 competitive models, publicly available information and Ford data at the time of printing of the 2012 original printed version. Some features discussed may be optional. Vehicles shown may contain optional equipment. Features shown may be offered only in combination with other options or subject to additional ordering requirements or limitations. Dimensions shown may vary due to optional features and/or production variability. Following publication of the 2012 original printed brochure, certain changes in standard equipment, options and the like, or product delays may have occurred which would not be included in these pages. Your Ford of Canada Dealer is your best source for up-to-date information. Ford Motor Company of Canada, Limited, reserves the right to change product specifications at any time without incurring obligations. Colours may not be exactly as illustrated. Please see your sales consultant for specific colour and model availability. Please visit your local dealer or ford.ca for complete vehicle details.



Drive one.