

FORD **KUGA**



Feel the difference

Feel the difference

In a world of me-too products, the latest Fords really stand out. Award-winning design and amazing technology can be yours across the range. Take a test drive and feel the difference.

2-9

Ford kinetic Design

Ford kinetic Design is the reason why our vehicles look more exciting than ever before. Bold, dynamic lines that create energy in motion.

10-13

Quality

We design and build your Ford to feel as good after many years of service as it did the day you picked it up. And to drive just as beautifully, too.



14-15

Green

Using advanced Ford ECOnetic Technology, we're committed to creating vehicles with improved fuel economy, reduced CO₂ emissions and a lower overall cost of ownership.



11

Safe

Ford's Intelligent Protection System uses sophisticated technology designed to help prevent an accident and, if one should happen, to protect you.



16-17

Smart

Cars that park themselves, windscreen wipers that know when it's raining – just some of the many clever solutions from Ford that make life a little easier.



18-23

Choose your Ford Kuga

- Zetec
- Titanium

24-25

The range

26-33

Add those extra touches

- Interior packs
- Bodystyling kit
- Wheels
- Technology
- Transportation
- Personalisation

34

Ownership

35-39

Specifying your Ford Kuga

40-41

Colour and trim





You either have it, or you don't

A quality that's hard to define, but instantly recognisable.

Model shown is a Kuga Titanium in Dark Micastone metallic paint (option) with 18" 5-Y spoke alloy wheels (option) and rear privacy glass (option)





It brings you together

Who can defy the laws of attraction?

Model shown is a Kuga Titanium in Dark Mica stone metallic paint (option) with 18" 5-Y spoke alloy wheels (option), rear privacy glass (option), panoramic roof (option) and front and rear park assist (option)





It sets you apart

Everything about you is a reflection of your inner values.

Model shown is a Kuga Titanium with Titanium X Pack (option) and High Navigation (option)



**Let them look**

Some admire your choices. Perhaps others secretly envy them.





The attention to detail which has been lavished on the Ford Kuga is immediately evident, from the exterior finish to the quality of the interior. Ford has engineered every single component for dependability, safety and strength with one objective clearly in mind; quality that's built to last.

Precision built with the future in mind



Brakes built to perform

The Ford Kuga's braking system is electronically tuned to meet the demands of on- and off-road driving conditions. Several technologies work in unison, such as ABS with electronic brake-force distribution (EBD) which balances the braking force across all wheels for safe, stable braking. And there's Emergency Brake Assist (EBA), which delivers extra brake power when you need it most. (Standard)

Xenon Front Lighting System

With a special jewel-like design, these headlights not only make sure you're seen by other drivers but also illuminate any hazards more clearly than conventional headlights. (Option)



Safety features

Ford's Intelligent Protection System (IPS) comes as standard on the Ford Kuga. It monitors the readiness of its comprehensive airbag systems as well as its Electronic Stability Programme (ESP), Traction Control System (TCS) and Emergency Brake Assist (EBA). (Standard)

At home, wherever you drive

Ford Kuga's all-wheel drive system constantly and intelligently monitors your driving environment so you don't have to; optimising traction, fuel economy and ride, whatever the surface, to ensure that power goes to the wheels that can use it best.



The Ford Kuga possesses the renowned driving quality you would expect from the latest generation of Ford cars. Its Control Blade independent rear suspension delivers an on-road experience that is second to none in its class. Its off-road capability is equally impressive. The intelligent all-wheel drive system adjusts automatically to give you optimum control in all conditions.

That Ford feeling



Intelligent all-wheel drive

Tested in the harsh conditions of a Swedish winter, the Ford Kuga's intelligent all-wheel drive system uses proven Haldex 4 technology to react instantly to a change in road conditions. Traction is maintained by automatically applying power to the wheels that need it most, ensuring you stay in control whatever the road throws at you. (Standard on All-Wheel Drive (AWD) models).



Feel the power, not the shift

The perfect combination between the convenience of an automatic and the smoothness and driving performance normally associated with a manual. Ford PowerShift 6-speed automatic transmission cleverly selects the next appropriate gear at exactly the right moment, delivering lightning-fast gear changes with no disruption to the flow of power. (Option)

Note PowerShift gear knob insert design may vary slightly from that shown.

Power to spare

Ford Kuga's acclaimed 140 PS 2.0 TDCi diesel engine has been praised for its refinement, efficiency and responsiveness – and now you can choose a 163 PS version for even more impressive performance. Both are available with the option of our advanced PowerShift automatic transmission. (Option)





Ford ECONetic Technology is designed to reduce your cost of ownership through improved fuel economy and lower CO₂ emissions, without any compromise on style or driving quality.

In the near future our ECONetic Technology will expand to include electric and hybrid-electric vehicles, biofuel-capable vehicles, plug-in hybrids and hydrogen fuel cell-powered vehicles.

What can
Ford ECONetic
Technology do for
you?



Ford ECONetic Technology

- Ford Duratorq TDCi advanced Diesel engines – provide exceptional fuel economy and low CO₂ emissions (see right)
- Ford PowerShift transmission – combines the efficiency of manual transmission with the convenience of a conventional automatic
- Ford Auto-Start-Stop (see right)
- Ford Smart Regenerative Charging – charges the battery every time you brake
- Ford Electric Power-Assisted Steering – a more efficient system that uses less engine power
- Active Grille Shutter – improves aerodynamics and lowers fuel consumption
- Ford Eco Mode driver information system – shows you when you're achieving optimum fuel efficiency
- Shift Indicator – advises you when to change gear for maximum fuel efficiency
- Ford EcoBoost fuel-efficient engines

Ford EcoBoost

With direct petrol injection, turbocharging and variable valve timing, Ford EcoBoost engines deliver power and torque consistent with larger displacement engines. For example, the 1.6 160 PS EcoBoost engine in Ford S-MAX has more power than the 2.0 Duratec engine, and yet it achieves around 15% better fuel economy and 13% lower CO₂ emissions.

Ford Auto-Start-Stop

When your vehicle is idling at a standstill, the engine automatically shuts down to save fuel consumption. When you want to drive off, the engine immediately restarts.

Electric and Hybrid vehicles

Our electrically-powered vehicles will produce zero emissions. Rechargeable through wall outlets and targeted to get up to 100 miles per charge, they'll be ideal for a daily commute and trips around town. In addition, two next-generation hybrid models are under development.



Working for a cleaner tomorrow

At Ford, we've been quietly and consistently reducing our impact on the environment. Here are just a few headlines:

- Since 2000, we've reduced manufacturing plant energy consumption by over 27% and CO₂ emissions by 31% worldwide
- Between 2003 and 2008, Ford reduced water consumption in its plants across Europe by 40%
- Solar/photovoltaic panels on the roof of our Bridgend engine plant in the UK generate enough power to light an area of around 10,000 square metres
- Almost 300 parts used in European Ford vehicles are made from recycled non-metallic materials – potentially avoiding 17,000 tonnes of waste going to landfill sites every year

All the electricity needed to power Ford's Dagenham Diesel Centre is provided by two 85 m high wind turbines. With a combined maximum output of 3.6 MW, they generate over 6.7 million kWh of electricity every year, enough to power over 2,000 homes.

Our Cologne plant utilises hydro-electric power from Norway and Sweden. This reduces CO₂ emissions by 190,000 tonnes a year. Shipping their finished vehicles on Rhine river barges means fewer truck journeys and less fuel consumed to further reduce CO₂ emissions.



If you wish to know more, logon to:
ford.com/go/sustainability



Power converter

Provides direct power for laptops and all your essential gadgets (accepts domestic 3-pin electrical plugs). (Option)



The new Ford Kuga is packed with smart technology. You'll find yourself smiling as it lets you do things faster, more effectively and with style.

That's clever



Ford Power Starter Button (standard)

Start your Kuga with the push of a button.

Lock or unlock the doors without ever holding the key. Upgrade to keyless entry and just keep the key fob with you in your pocket or bag to automatically unlock and lock your Kuga (option).

Capless refuelling

No dirty fuel caps to touch. Plus a unique safeguard ensures nobody can accidentally fill up with the wrong fuel. (Standard)



Mini tailgate

When you only have a small load to put in or get out, open the mini tailgate – it's quicker and more convenient. (Standard)



Rear-view camera

Go into reverse and the rear-view camera comes on in the navigation display, allowing you to see objects behind your car for easy manoeuvring. (Standard with High navigation system)



Zetec



The Ford Kuga Zetec brings you a blend of stunning design, outstanding driving quality and sheer capability unmatched in its class, plus a generous level of specification. Kuga Zetec comes equipped with chrome roof rails as standard (not shown in image above). Alloy wheels shown in above image are optional at extra cost.

Features

- 17" wheels and hub caps
- Manual air conditioning
- Keyless start with 'Ford Power' starter button
- Front fog lights
- Leather steering wheel
- Window auto close
- Sports front seats
- Mini tailgate
- Chrome roof rails
- Trip computer
- Power heated door mirrors with built-in indicator
- Portable audio device connector (AUX)
- Remote control door entry
- Driver's seat lumbar adjust
- Driver's seat manual height adjust
- Flexible tonneau cover
- Front and rear curtain airbags
- ISOFIX provision

Sports-style front seats
Provide exceptional support and comfort. (Standard)

Front fog lights
With chrome trim rings. (Standard)

Power heated door mirrors
With an integrated side indicator and puddle light. (Standard)

Ford Power Starter Button
No key required. Just press and drive. (Standard)

Manual air conditioning
Easy controls for fast cooling. (Standard)

MP3 connection
Play music directly from your MP3 player through the Ford Kuga's stereo. (Standard)





Titanium



Get yourself behind the wheel of the Ford Kuga Titanium and you're surrounded by contemporary luxury and technical innovation.

Additional to Zetec

- 17" alloy wheels
- Cruise Control
- DEATC
- Partial leather trim
- Leather gear knob
- Automatic rain-sensing wipers
- Automatic headlight control
- Auto-dimming rear-view mirror
- Footwell lights
- Passenger seat lumbar adjust
- Passenger seat manual height adjust

Automatic headlights

Switch on automatically when light levels drop. (Standard), Xenon headlights shown feature a distinctive LED light strip. (Option)



Cruise control

With fingertip controls. (Standard)



Rain-sensing wipers

Come on automatically when the system senses rain. (Standard)



17" alloy wheels

(Standard)



Leather gear knob

A touch of luxury every time you change gear. (Standard)



Auto-dimming rear-view mirror

A sensor detects harsh lights behind you and dims the mirror. (Standard)





Individual Interior Trim Packs

Left Airfield/partial leather seat trim in Ebony (standard); **Centre left** Leather seat trim in Ebony (option); **Below** Leather seat trim in Ivory (option).



Aluminium front scuff plates with 'Individual' logo
(Standard)



Deep pile velour front and rear Individual floor mats
In Jet with Ivory piping. (Standard)

Alloy pedal set

Pedal set with aluminium covers, including footrest cover. (Standard for manual transmission only)

Bodystyling Kit

A unique collection of bodystyling features to help you stand out from the crowd. (Standard)



Optional Luxury Pack

Carefully selected features let you create a space you can truly call your own. (Option)

Additional to Titanium

- 18" 5-spoke alloy wheels
- Full bodystyling kit (includes: front and rear bumpers with body colour lower side panels; integrated silver skid plate; unique black front grille and silver lower grille surround; body colour wheel arch extensions; front and rear parking sensors)
- Individual floor mats in Jet with Ivory piping
- Aluminium front scuff plates with 'Individual' logo

Note the 18" and 19" wheels available on Ford Kuga are designed to deliver more sporting driving characteristics and a firmer ride quality compared to standard 17" wheels.

- Pedal set with aluminium covers, including footrest cover (for manual transmission only)

Optional Individual Trim Packs

- Choice of Ebony or Ivory leather seat trim with matching leather door panel inserts

Optional Luxury Pack

- 19" Ford Individual 5-spoke Silver alloy wheels
- Roof rails
- Privacy glass

Individual - Please consult your Main Ford Dealer

Ford Kuga Individual sets a benchmark with its distinctive bodystyling and high levels of craftsmanship. Premium quality leather seat and door trims are available to make it even more special.

Individual





The range

Zetec

Standard features

- 17" alloy wheels
- Manual air conditioning
- Ford KeyFree System with Ford Power Starter Button
- Front Fog Lights
- Leather steering wheel
- Window auto close
- Sports-style front seats
- Mini-tailgate
- Trip computer
- Power heated door mirrors with built-in indicator
- Portable audio device connector
- Remote control door entry
- Driver's seat lumbar adjust
- Driver's seat manual height adjust
- Flexible tonneau cover
- Front and rear curtain airbags
- ISOFIX provision

Engines

- **Diesel**
 - 2.0 Duratorq TDCi (140 PS) 4x2/4x4
 - 2.0 Duratorq TDCi (163 PS) 4x4

Titanium

Additional to Trend:

- 17" alloy wheels
- Cruise Control
- DEATC
- Partial leather trim
- Leather gearshift knob
- Automatic rain-sensing wipers
- Automatic headlight control
- Auto-dimming rear-view mirror
- Footwell lights
- Passenger seat lumbar adjust
- Passenger seat manual height adjust

Engines

- **Diesel**
 - 2.0 Duratorq TDCi (140 PS) 4x2/4x4
 - 2.0 Duratorq TDCi (163 PS) 4x4

Individual

Individual – Please consult your Main Ford Dealer

Additional to Titanium

- 18" 5-spoke alloy wheels
- Full bodystyling kit
- Individual floor mats in Jet with Ivory piping
- Aluminium front scuff plates with 'Individual' logo
- Pedal set with aluminium covers, including footrest cover (for manual transmission only)

Engines

- **Diesel**
 - 2.0 Duratorq TDCi (140 PS) 4x2/4x4
 - 2.0 Duratorq TDCi (163 PS) 4x4





Wheel design

We've reinvented the wheel (almost). New designs have been specially developed to enhance the powerful design of the Ford Kuga.



Wheel designs with the beauty and symmetry of snow crystals to complement your Ford Kuga.

Wheels

Note The 19" wheels available on Ford Kuga are designed to deliver more sporting driving characteristics and a firmer ride quality compared to standard 17" and 18" wheels.

Scuff plates

Emblazoned with the 'KUGA' logo, these stainless steel scuff plates welcome and protect, set for front available as illuminated or non-illuminated. (Accessory)

17" 5x2-spoke U-design alloy wheel with 235/55 tyres (standard on Zetec, option and accessory on Titanium).
Part no. 1706183.

17" 5x2-spoke alloy wheel with 235/55 tyres (standard on Titanium, option and accessory on Zetec).
Part no. 1504207.

18" 5-spoke alloy wheel with 235/50 tyres (standard on Individual, option and accessory).
Part no. 1552736.

19" 5-spoke alloy wheel with 235/45 tyres (option and accessory).
Part no. 1547571.





Sony audio system
Sony CD stereo radio with MP3 playback. (Option)



Ford Key-Free System
Lock, unlock and start your Ford Kuga without a conventional key. (Option)

Your favourite music can make a journey. The Ford Kuga offers you a wide choice of sound systems, some with built-in navigation.

Technology



Radio/CD/premium SD-navigation system with 7" colour touchscreen and rear-view camera

Premium quality audio, navigation and information system. Features a 7" colour touchscreen for control of the radio/CD, navigation system, Dual-zone Electronic Automatic Temperature Control (DEATC) and mobile phone.

Select reverse gear and the rear-view camera comes on automatically in the navigation display, allowing you to see objects behind your car. Special guidance graphics indicate the width and centre line of the car, based on the steering angle, for safer and easier manoeuvring.

(Only available with DEATC air conditioning and heated front seats) (Not available in RoI)

Stereo radio/CD

This stereo radio/CD player features 'Keycode' anti-theft coding, RDS EON, 24 programmable stations and six speakers. Remote control functionality via the left steering wheel toggle switch. Includes AUX connection for external music devices. (Standard)

Radio/CD/SD navigation system with 7" colour touchscreen

Features Bluetooth® with Voice Control System, USB connector for your iPod® or mobile digital device, MP3 compatibility, remote and audio controls. Navigation shows speed signs, destinations by voice command includes 8GB SD card. (Option)

Communication console for portable navigation systems

Convenient 'plug-in and play' mounting for selected navigation systems. Fits to the A-pillar and keeps wiring out of sight. (Option and accessory) Compatible navigation systems available from your Ford Dealer. (Accessory)

Note The Bluetooth® word mark and logos are owned by the Bluetooth SIG, Inc. and any use of such marks by Ford Motor Company Limited and its associated companies is under licence.

Note iPod is a trademark of Apple Inc.



Bluetooth® audio streaming

Leave your music player in your pocket and Ford Kuga can still play your favourite tunes. Select artists, albums, tracks or genres, all at the sound of your voice. With no cables or downloads to worry about, it's so simple with the built-in Bluetooth® Voice Control System. (Standard on radio/CD/premium SD-navigation system)



Getting you to your destination quickly, safely and economically

When it comes to navigation, not only can the system find the shortest and fastest way to your destination, but with 'eco' route it can find the most fuel-efficient way too. And, so you don't inadvertently drive too fast, the system can also display the legal speed limit to help keep you on the right side of the law. (Standard on radio/CD/premium SD-navigation system)





Thule 'Expedition' carrier basket
A versatile basket platform for a variety of loads.
Made of lightweight, robust aluminium. (Accessory)



The Ford Kuga's generous storage capacity can be expanded with a range of transport accessories.

Transportation



Britax Römer child seat
Various seats available for all ages – also available with ISOFIX. Removable and washable cover. (Accessory)



'Thule' bike carrier
Specially designed to carry modern bikes with frames up to 80 mm in diameter. Also features integral locks to keep bikes safe and secure. (Accessory)

Thule ski and snowboard carrier
Lockable carrier used for your precious ski gear. (Accessory)



Lockable crossbars
Made of solid aluminium, these bars are the base for all attachments such as roof boxes, bike carriers, ski racks, etc. (Accessory)

Thule roof box 'Pacific'
Available in various sizes. (Accessory)



Aluminium roof rails
Enhance versatility and styling. (Standard)

Premium bumper protector
Stainless steel appearance protects the bumper from luggage scuffs. Transparent protection foil also available. (Accessory)



Detachable tow bar
Also available as fixed version. (Option and accessory)



Waeco coolbox
High-performance 35-litre capacity box cools down to a minimum of 1°C. Integrated 230V AC connector. (Accessory)



Loadspace liner
Extra solid liner with 100 mm lip height, ideal for transporting wet or dirty items. (Accessory)

Thule sailboard carrier
Developed and tested by surfers for surfers. Holds one board and two masts. (Accessory)



Thule 'Ranger 90' foldable roof box
A waterproof soft box that is easy to mount, load and unload. Folds down compactly when not in use. (Accessory)



Twinny Load bike carrier 'Compact'
Secure mounting for two bikes (extendable to three), with flip down mechanism for easy boot access. (Accessory)



Panoramic roof

Brings more light and a feeling of extra space to the interior. Includes two sunblinds and infrared reflective coating. (Option and as part of option packs)

Premium velour mats

Perfectly complements your chosen interior, with nubuck surround and aluminium-effect 'KUGA' logo. Driver's mat is fixed to prevent slippage. (Option and accessory)

Add that final touch of luxury, comfort and convenience from a selection of premium designed features.

Personalisation



Power-fold door mirrors

Door mirrors can retract out of harm's way when parked. Also useful when squeezing through tight spaces. Includes built-in puddle lights. (Option)

Bluetooth® voice control and USB connector for MP3

Connects to the centre console and offers USB port, AUX jack and MP3 connection plus Bluetooth® voice control. When not in use, it can be hidden away in the stowage box. (Option)

Note The Bluetooth® word mark and logos are owned by the Bluetooth SIG, Inc. and any use of such marks by Ford Motor Company Limited and its associated companies is under licence.

Parking distance sensors

Audible warning helps you judge distance between your car and an obstacle. (Option for front and rear, or rear only)



Alloy foot pedals

Add a sporting touch to your Ford Kuga. Pedal cover set, aluminium with rubber inserts. (For manual transmission only, option and accessory)



Making life easy

Our range of finance, insurance, service and assistance options is designed with just one thing in mind – making life easy for you.

Ford Credit

Across Ireland, a dedicated network of Ford Dealers are equipped and trained to meet the needs of today's drivers. Ford not only cares through Dealers, we also offer a variety of finance and leasing schemes to suit the financial needs of both the private and business buyer.

Finance for Individuals*

Ford Credit have used their extensive knowledge of buyers' needs to tailor a range of specialist finance products, so there's sure to be a package that's right for you. And whichever product you choose, you'll find arranging finance easy with our flexible and competitive terms.

* Lending criteria and terms and conditions apply.

Finance for Business Ford Credit offer a variety of finance and leasing schemes to suit the financial needs of the business buyer. With our wide choice of plans and services, no one is more committed to delivering complete motoring confidence and total peace of mind than Ford.

Payment Protection goes hand in hand with your vehicle finance. It makes good sense and provides you with a financial safety net in case of the unforeseen. With Ford Credit, your monthly repayment would be taken care of, which could free up money to cover the additional expenses that crop up at times like these.

Ford Insure

Visit our Ford Insure website at <http://www.ford.ie/insurance> where you can obtain a car insurance quote and purchase a policy online, 24 hours a day, 365 days of the year. You can also contact our call centre on **1850 449 444**. Call centre opening times are: Monday-Friday: 9am to 8pm (excluding Bank Holidays) & Saturday: 10am to 2pm. Why not try us out?

Configure your Ford online

Choose and change bodystyle, colour, trim and options, and instantly see how your new Ford will look. You can view it from multiple angles. A handy tally of your choices and their price breakdown helps you keep to your budget.

Services

Ford Protect

You can extend your new vehicle warranty for up to three more years, with the Ford Protect plan of your choice. Then you'll benefit from:

- No repair costs for major vehicle parts for up to 5 years.
- No nasty surprises – one payment is all you need to make.

Ford Warranty

For servicing, repairs or bodywork, or when you're choosing Ford accessories, the Ford warranty gives you complete peace of mind for up to two years. You can rest assured that all repairs will be carried out in line with the highest quality standards. Moreover, if you decide to sell your Ford, the warranty will also be transferred and continue to benefit the next vehicle owner.

Ford Authorised Bodyshops

Ford always provides the very best for you and your vehicle. That's why we have established the Ford Authorised Bodyshop Programme. A network of body repair specialists, they have the Ford know-how, technology and experience to repair your car to its pre-accident condition. Because no one knows Ford like we do, they are the perfect choice for repairing your Ford. And, we are so confident about the quality of our repair that we'll guarantee it for three years.

Contacts

Ford Customer Relationship Centre

Your Ford Dealer and Ford are totally committed to providing you with the highest standard of care to ensure your complete satisfaction and long-term loyalty. In the unlikely event that your Ford Dealer can't help you or you need to speak to Ford directly, the Ford Customer Relationship Centre is just a phone call away. Call 021 4329 290.

Exterior equipment

	Zetec	Titanium
Design features		
Door mirrors – Body colour housing, heated, power adjustable with integrated side indicator and puddle lights	●	●
Door mirrors – Body colour housing, heated, power foldable and adjustable with integrated side indicator and puddle lights	□	□
Front upper grille – Chrome surround	●	●
Front lower grille – Moondust Silver colour surround	●	●
Front fog lights	●	●
Rear privacy glass	○	○
Green tinted glass	●	●
Green tinted glass (in combination with privacy glass)	○	○
Rear spoiler – Body colour	●	●
Roof rails – Aluminium finish	●	●
Detachable towbar – includes enhanced towing stability pack	○	○
Wheels		
Steel – 17"x7", 6-spoke wheel covers, 235/55 tyres	●	-
Alloy – 17"x7½", 5x2-spoke, 235/55 tyres	○	●
Alloy – 17"x7½", 5-spoke, Y design 235/55 tyres	○	○
Alloy – 18"x7½", 5-spoke, 235/50 tyres	○	○
Alloy – 19"x8", 5x2-spoke, 235/45 tyres	○	○
Tyre repair kit	○	○
Spare – Mini steel	●	●
Locking wheels nuts (only with alloy wheels)	●	●
Convenience features		
Ford Easy Fuel capless refuelling system	●	●
Headlights – Automatic on/off (includes automatic wipers with rain sensor and auto-dimming rear-view mirror)	□	●
Headlights – Bi-xenon, with automatic levelling and jet wash	○	○
Headlights – "Guide me home" delay	●	●
Headlights – Jet wash (as part of Bi-xenon headlights)	○	○
Panorama roof – Fixed (not with power tilt/slide sunroof)	○/□	○/□
Parking Distance Sensors – Rear	○	○
Parking Distance Sensors – Front and rear	○	○
Tailgate wash/wipe	●	●
Wipers – Standard with 6-speed interval settings	●	-
Wipers – Automatic with rain sensor (part of automatic headlights)	□	●
Windscreen – Heated, with heated windshield washer jets	○	○
Option packs		
Comfort Pack (Zetec) – Cruise control, front and rear parking distance sensors, and electrically foldable door mirrors	○	-
Comfort Pack (Titanium) – Ford Key-Free System, front and rear parking distance sensors, and electrically foldable door mirrors	-	○
Seasons Pack – Fixed panorama roof, solar reflect windscreen, heated windscreen, automatic wipers, and Lights	○	-
Titanium X Pack – Full Leather Trim, heated front seats with variable control, driver's 6-way electric adjustment, 18" 5-spoke alloy wheels, fixed panorama roof, solar reflect windscreen, and QuickClear heated windscreen	-	○
Visibility Pack – Heated windscreen, infrared windscreen, auto headlights and rain-sensing wipers	○	○

● = Standard, ○ = Optional, at extra cost, □ = Part of option pack, at extra cost.



Interior equipment

	Zetec	Titanium
Design features		
Door lever – Aluminium	●	●
Gearshift knob – Leather with silver insert and aluminium finish ring	●	–
Gear knob – Leather with black insert and aluminium finish ring	–	●
Scuff plates – Front, Moondust Silver colour	●	●
Steering column – Reach and rake adjustable	●	●
Steering wheel – 4-spoke, leather trimmed with silver accents	●	●
Audio and communication systems		
Ford 6000 Radio/CD – Six speakers, remote audio controls, AUX connection for external music devices	●	●
Sony Radio/CD – Eight premium speakers, remote audio controls, MP3 compatible, AUX connection for external music devices	○	○
USB/iPod connectivity port (only with Bluetooth Hands Free Phone and Voice Control System)		
SD Navigation System with Radio/CD – 7” colour display, 6 premium speakers, remote audio controls, AUX connection for external music devices, SD memory cards slot for data (eg. music) exchange; navigation data on SD card and CD (only with DEATC air conditioning and heated front seats)	○	○
Bluetooth® Hands Free Phone and Voice Control System for the command of audio system, air conditioning and mobile phone	○	○
Climate control		
Air conditioning – Manual control	●	–
Air conditioning – Dual Electronic Automatic Temperature Control (DEATC)	○	●
Convenience features		
Ford Power Starter Button	●	●
Cruise control	○	●
Shift indicator light	●	●
Accessory power socket (12V)	●	●
Centre console – Premium, with sliding armrest, additional 12V power socket and large stowage bin	●	●
Power converter – 230V pulse charge type, limited to 150W (takes Irish 3-pin electrical domestic plug)	○	○
Courtesy light – For front passengers, overhead with theatre-style dimming; ambient lighting	●	●
Courtesy light – Footwell area	–	●
Courtesy light – Front and rear reading lights (deleted if optional fixed panorama roof is specified)	●	●
Rear-view camera (standard with DVD Navigation System, option with CD/SD Navigation system)	○	○
Rear-view mirror – Auto-dimming (included with automatic headlights or Visibility Packs)	□	●
Stowage pockets – Front seat backs	●	●
Stowage unit – Located in upper instrument panel	●	●
Variable dimming of instrument cluster and radio screen display	●	●
Windows – Electric front and rear with one-touch lowering/closing on driver's side, and global opening	●	●

Interior equipment

	Zetec	Titanium
Seats		
Front seats – Sports-style, fabric trim	●	–
Front seats – Sports-style, partial leather trim	–	●
Front seats – Sports-style, leather trim	○	○
Front seat – Driver's manual lumbar support adjustment	●	●
Front seat – Driver's manual height and fore/aft adjustment	●	●
Front seat – Driver's electric height, fore/aft and backrest angle adjustment (only available with leather trim)	□	□
Front seat – Passenger's manual fore/aft adjustment	●	–
Front seat – Passenger's manual height and fore/aft adjustment (includes manual lumbar support)	–	●
Front seats – Folding seat back trays (only on Zetec if leather trimmed seats are specified)	□	○
Front seats – Heated cushion and seatback, with 5 variable positions	○	○
Seats – Leather trimmed (includes heated front seats)	○	○
Rear seat – 60/40 split back and cushion	●	●
Rear seat – Folding centre armrest, with two integrated cup holders and flip-up stowage (only on Zetec if leather trimmed seats are specified)	□	●
Loadspace		
Accessory power socket (12V) in luggage compartment	●	●
Tonneau cover	●	●
Tie-down hooks	●	●

*To check Bluetooth®-enabled phone compatibility please contact your local Ford Dealer, or, visit ford-mobile-connectivity.com/home.
● = Standard, ○ = Optional, at extra cost, □ = Part of option pack, at extra cost. The Bluetooth® word mark and logos are owned by the Bluetooth SIG, Inc. and any use of such marks by Ford Motor Company Limited and its associated companies is under licence. Other trademarks and trade names are those of their respective owners.

Safety and security

	Zetec	Titanium
Safety		
Intelligent Protection System (IPS)	●	●
Anti-lock brakes (ABS) with electronic brake-force distribution (EBD)	●	●
Electronic Stability Programme (ESP) with Traction Control (includes Emergency Brake Assist (EBA))	●	●
Enhanced Electronic Stability Programme (ESP) with Traction Control and trailer stability function (includes Emergency Brake Assist (EBA)) (standard when tow bar is specified)	○	○
Emergency Brake Warning (automatic flashing of brake lights under heavy braking)	●	●
Airbags – Driver's and front passenger's*	●	●
Airbags – Front side impact	●	●
Airbags – Front and rear curtain	●	●
Airbags – Front passenger's de-activation switch (Dealer-fit option)	○	○
Seats – ISOFIX mounting provision for child seats (outer seats only and requires accessory fitting Kit)	●	●
Security		
Remote central double locking	●	●
Perimeter alarm	○	○
Perimeter and volume sensing alarm	○	○
Ford Key-Free System – Full hands-free vehicle entry system	○	○

● = Standard, ○ = Optional, at extra cost. *Note: A child seat should never be placed in the front passenger seat when the Ford vehicle is equipped with an operational front passenger's airbag. The safest place for children is properly restrained on the rear seat.

Mechanical Features

	Zetec	Titanium
Steering		
Electric Hydraulic Power-Assisted Steering (EHPAS)	●	●
Suspension		
Front – Independent with MacPherson struts and anti-roll bar	●	●
Rear – Independent Control Blade multi-link system and anti-roll bar	●	●
Intelligent 4WD System (standard when Kuga AWD is selected)	●	●
● = Standard.		

Fuel, performance and emissions

Key Data	Trans-mission	Drive	Maximum Power PS (kW)	Torque Nm (Nm with overboost)	CO ₂ emissions (g/km) ⁹⁰	Fuel consumption in L/100 km ⁹⁰			Performance*		
						Urban	Extra Urban	Combined	Max. speed (km/h)	0-100 km/h (secs)	50-100 km/h* (secs)
2.0 Duratorq TDCi (DPF), Durashift 6-speed manual	M6	4x2	140(103)	320	154	7.4	5.0	5.9	186	10.1	8.2
2.0 Duratorq TDCi (DPF), Durashift 6-speed manual	M6	4x4	140(103)*	320	159	7.6	5.1	6.0	184	10.4	8.7
2.0 Duratorq TDCi (DPF), Durashift 6-speed auto	A6	4x4	140 (103)*	320	179	8.5	5.8	6.8	183	10.6	n/a
2.0 Duratorq TDCi (DPF), Durashift 6-speed manual	M6	4x4	163 (120)	340	159	7.6	5.1	6.0	196	9.5	8.1
2.0 Duratorq TDCi (DPF), Durashift 6-speed auto	A6	4x4	163 (120)	340	179	8.5	5.8	6.8	193	9.7	n/a

^{*}In 4th gear. ⁹⁰Ford test figures. ⁹⁰The declared fuel consumption and CO₂ emissions are measured according to the technical requirements and specifications of the European Directive 80/1268/EEC or the European Regulation (EC) 715/2007 amended by (EC)692/2008. Fuel consumption and CO₂ emissions are specified for a vehicle type and not for a single car. The applied standard test procedure enables to compare between different vehicle typesand different manufacturers. This information is not part of any product offer made. Real world fuel consumption can vary as the fuel efficiency of a vehicle is influenced by (individual) car configurations, driving behaviour, use of technical equipment such as air conditioning as well as other non technical factors. **DPF** = Diesel Particulate Filter.

Model availability, weights and loads

	Kerbweight (kg) [†]	Gross Vehicle Mass (kg)	Gross Train Mass (kg)	Max. Towable Mass (braked) (kg)	Max. Towable Mass (unbraked) (kg)
2.0 Duratorq TDCi (DPF) (140 PS (103 kW)) Durashift 6-speed manual, 4x2	1584	2160	4060	2000	750
2.0 Duratorq TDCi (DPF) (140 PS (103 kW)) Durashift 6-speed manual, 4x4	1614	2130	4230	2100	750
2.0 Duratorq TDCi (DPF) (140 PS (103 kW)) Durashift 6-speed auto, 4x4	1672	2160	4260	2100	750
2.0 Duratorq TDCi (DPF) (140 PS (103 kW)) Durashift 6-speed manual, 4x4	1614	2130	4230	2100	750
2.0 Duratorq TDCi (DPF) (163 PS (120 kW)) Durashift 6-speed auto, 4x4	1672	2160	4260	2100	750

[†]Represents the lightest kerbweight assuming driver at 75 kg, full fluid levels and 90% fuel levels, subject to manufacturing tolerances and options, etc., fitted. **Towing limits** quoted represent the maximum towing ability of the vehicle at its Gross Vehicle Mass to restart on a 12 per cent gradient at sea level. The performance and economy of all models will be reduced when used for towing. **Nose weight limit** is a maximum of 75 kg on all models. **Gross Train Mass** includes trailer weight. **Note** All vehicles are 6-speed manual or 6-speed automatic.

Dimensions

Overall length (mm)	4443
Overall width with/without mirrors (mm)	2128/1842
Overall height (unladen) (with roof rails) (mm)	1710
Turning circle – kerb to kerb (m)	11.5
Luggage capacity (litres) [†]	
5-seat mode (laden to package tray) (with mini steel spare)	360
5-seat mode (laden to package tray) (with tyre repair kit)	410*
2-seat mode (laden to roof) (with mini steel spare)	1355
2-seat mode (laden to roof) (with tyre repair kit)	1405
Fuel tank capacity (litres)	
Diesel	66

[†]Measured in accordance with ISO 3832. Dimensions may vary dependent on the model and equipment fitted. *Includes 68 litres under stowage load compartment floor.

Colour and trim

Model	Zetec		Titanium	
Seat facing trim and colour	Rack in Generic Silver	Napoli leather*	Airfield/partial Napoli leather	Napoli leather*
Seat bolster trim and colour trim colour	Gecko in Anthracite	Napolic leather in Ebony*	Napoli Leather in Ebony	Napoli leather in Ebony*
Seat back stripe colour	Metal Grey	–	Generic Silver	–
Door handle colour	Antimon	Generic Orange Antimon	Pontos	Pontos
Gearshift bezel colour	Triton Silver	Triton Silver	Triton Silver	Triton Silver
H bezel colour	Antimon	Generic Orange Antimon	Pontos	Pontos
Solid body colours				
Blazer Blue	●	●	●	●
Frozen White	●	●	●	●
Metallic body colours*				
Dark Micastone	○	○	○	○
Ice White	○	○	○	○
Lunar Sky	○	○	○	○
Mars Red	○	–	○	○
Midnight Sky	○	○	○	○
Moondust Silver	○	○	○	○
Panther Black	○	○	○	○

● = Standard, ○ = Option at extra cost, – = Not Available. *All metallic body colours and leather trim are options at extra cost.

Colour and trim



Blazer Blue
Solid body colour



Mars Red
Metallic body colour*



Panther Black
Metallic body colour*



Dark Micastone
Metallic body colour*



Midnight Sky
Metallic body colour*



Ice White
Special metallic body colour*



Lunar Sky
Metallic body colour*



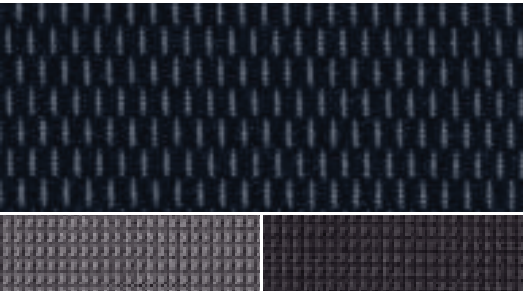
Frozen White
Solid body colour



Moondust Silver
Metallic body colour*

The Ford Kuga is covered by the Ford Perforation Warranty for 12 years from the date of first registration. Subject to terms and conditions.
Note The car images used are to illustrate body colours only and may not reflect current specification. Colours and trims reproduced within this brochure may vary from the actual colours, due to the limitations of the printing processes used.

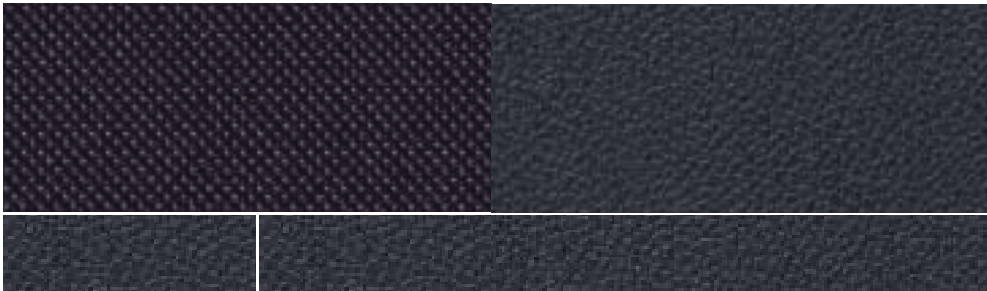
*Metallic body colours and leather trim are options at extra cost.



Zetec
Seat facing: Rack in Generic Silver
Stripe: Gecko in Metal Grey
Bolster: Gecko in Anthracite



Titanium
Seat facing: Airfield in Ebony
Stripe: Airfield in Generic Silver
Bolster: Napoli leather in Ebony



Individual - Please consult your Main Ford Dealer
Seat facing: Airfield in Ebony
Stripe: Napoli leather in Ebony
Bolster: Napoli leather in Ebony



Individual - Please consult your Main Ford Dealer
Ford Kuga Individual Interior Styling Pack in Ivory with Ebony piping*
(Option) (Not available with Blazer Blue)



Individual - Please consult your Main Ford Dealer
Ford Kuga Individual Interior Styling Pack in Ebony with Light Ivory piping*. Please consult your Ford Main Dealer



MY 2012 IRL en

Illustrations, descriptions and specifications. This brochure was correct at the time of going to print. However, Ford policy is one of continuous product development. The right is reserved to change specifications, colours and prices of the models and items illustrated and described in this publication at any time. For the latest details always consult your Ford Dealer. **Optional equipment.** Throughout this publication, wherever a feature is described as being an 'Option' or 'Optional Fitment/Pack', etc., you should assume that it will be at extra cost to the base vehicle, unless specifically stated to the contrary. All models and colour combinations are subject to availability. **Note.** Some images portrayed are of a pre-production model and/or are computer generated, therefore, the design/features on the final version of the vehicle may differ in various respects. In addition, some of the features shown on the vehicles may be optional. **Note.** This brochure contains both original Ford accessories as well as a range of carefully selected products from our suppliers, which are featured under their own brands. All supplier branded products are subject to warranty terms defined by the relevant suppliers and do not lie within the responsibility of Ford. **Note.** The Bluetooth® word mark and logos are owned by the Bluetooth SIG, Inc. and any use of such marks by Ford Motor Company is under licence. Other trademarks and trade names are those of their respective owners.



Allergy-tested interior All materials used in the manufacture of the interior of this vehicle meet the strict requirements of the TÜV TOXPROOF Criteria Catalogue for Vehicle Interiors by the TÜV Produkt und Umwelt GmbH and are designed to minimise the risk of allergic reactions. With doors and windows closed, the interior materials selected – together with the integrated pollen filter – protect the passengers against most allergising particles from the outdoor air. At higher temperatures, the additional use of air conditioning is recommended.



When you have finished with this brochure, please recycle it.

Published by Henry Ford & Son Limited,
Elm Court, Boreenmanna Road.
Registered in Ireland No. 4441.
BJN 307836. FoE 142E.
PN 179505/0911/1.5m/IRL en
September 2011.
© Ford Motor Company Limited.

www.ford.ie