

FORD **KA**



Feel the difference

Feel the difference

In a world of me-too products, the latest Fords really stand out. Award-winning design and amazing technology can be yours across the range. Take a test drive and feel the difference.

2-7

Ford kinetic Design

Ford kinetic Design is the reason why our vehicles look more exciting than ever before. Bold, dynamic lines that create energy in motion.

8-11
Quality

We design and build your Ford to feel as good after many years of service as it did the day you picked it up. And to drive just as beautifully, too.



12-13
Green

Using advanced Ford ECONetic Technology, we're committed to creating vehicles with improved fuel economy, reduced CO₂ emissions and a lower overall cost of ownership.



9
Safe

Ford's Intelligent Protection System uses sophisticated technology designed to help prevent an accident and, if one should happen, to protect you.



14-15
Smart

Cars that park themselves, windscreen wipers that know when it's raining – just some of the many clever solutions from Ford that make life a little easier.



16-23
Choose your Ford Ka

- Studio
- Edge
- Zetec
- Titanium

30-31
The range

24-39
Add those extra touches

- Individual Grand Prix
- Individual Digital
- Individual Metal-Ka
- Wheels
- Audio and connectivity
- Exterior style
- Interior style

40-47
Specifying your Ford Ka

48-50
Colour and trim

51
Ownership



Listen up!

Rue de Oreilles
Par un artiste inconnu

Great design speaks for itself. Ford Ka's cheeky shape says everything about its personality.

Model shown is a Ford Ka Titanium in Sunrise with 16" 5 Y-spoke alloy wheels (standard) and body colour rear spoiler (option).



In the air tonight

Leichtmetallräder Straße

Der unbekannte Künstler

Make contact with state of the art sound and communication.

Model shown is a Ford Ka Titanium in Sunrise with Coral/Syracuse interior, Bluetooth® and USB (option) and ESP (option).



Magic roundabout

Via Volante

Da un artista sconosciuto

Very few cars have it. The ability to turn a short spin into a wide open grin.

Model shown is a Ford Ka Titanium with Scuba metallic paint (option), 16" 5 Y-spoke alloy wheels (standard) and body colour rear spoiler (option).





Leather seats
Beautifully stitched in your choice of two seat colours. Shown here in Syracuse. (Option on Titanium)



Look beneath the Ford Ka's stunning exterior. You'll find a different kind of beauty composed of strength, obsessive attention to detail and quality that's built to last.

**Hidden strength.
Visible beauty**



A monument to quality

Ford Ka went on a fantastic 1.5 million kilometre European vacation – from baking 40°C heat to lung-straining 1,522-metre altitudes – to prove its durability. Cádiz to Madonna Di Campiglio anyone..

Intelligent Protection System

Beneath the steel safety cage lies a comprehensive airbag system, three-point seat belt pre-tensioners and collapsible steering column and pedals. All designed to spring into action in a fraction of a second.

Airbags

Driver's and front passenger's airbags are standard. Curtain airbags (including side) are optional.

ISOFIX

Anchorage for quick and safe fitting of child seats in the rear.

Emergency Brake Assist (EBA)

Designed to automatically sense when you brake hard and to provide additional braking force.

Emergency Brake Warning

Front and rear indicators automatically flash during heavy braking, giving other drivers advance hazard warning.

Rear parking sensor

An audible warning helps you to safely judge parking distances. (Option)

Tyre mobility kit

The easy way to reach your destination after a puncture. No more changing wheels. Simply plug it in and your tyre inflates. (Standard)



*Note: A child seat should never be placed in the front passenger seat when the Ford vehicle is equipped with an operational front passenger's airbag. The safest place for a child is when appropriately restrained on the rear seat.

Quality that's clear to see

Every Ford Ka features a high-quality paint finish but Piste pearlescent body colour comes with a special 3-coat paint process for an even more premium appearance. (Option on Zetec and Titanium)



Pearl White instrument panel

Shown here with Electronic Automatic Temperature Control (EATC, standard on Titanium).





The next generation of power steering
Ford Ka's sophisticated new Electric Power-Assisted Steering (EPAS) delivers full power when you park for feather-light manoeuvring. When you're on the move, the EPAS system automatically adjusts to provide optimum feel and control.



Glued to the road and looking great. Surrounded by clever features and securely seated even in the tightest bend. You'll never want to get out.

Get out more.
Stay in



Gear Shift Indicator

Advises you when to change gear for maximum fuel efficiency.



Ford Auto-Start-Stop system

When idling, the engine automatically shuts down to save fuel. When you want to drive off, the engine immediately restarts.



Ford-tuned suspension

Only Ford's famous development team can make a car react so instantly and accurately to your command, making it feel like an extension of you.



Maximum speed alert

You set the speed, and a flashing light and audible alarm are designed to warn you if you exceed this speed. (Standard)



Hill Start Assist

Designed to keep the car still so you can hill start without using the handbrake. (Option, as part of Electronic Stability Programme)





Ford ECONetic Technology is designed to reduce your cost of ownership through improved fuel economy and lower CO₂ emissions, without any compromise on style or driving quality. Much of this technology is brought together in our ECONetic models, which deliver some of the lowest fuel consumption and CO₂ emissions in the Ford range. In the near future our ECONetic Technology will expand to include electric and hybrid-electric vehicles, biofuel-capable vehicles, plug-in hybrids and hydrogen fuel cell-powered vehicles.

What can
Ford ECONetic
Technology
do for you?



Ford ECONetic Technology

- Ford EcoBoost fuel-efficient petrol engines (see right)
- Ford Duratorq TDCi advanced diesel engines – provide exceptional fuel economy and low CO₂ emissions
- Ford PowerShift dual clutch automatic transmission – combines the efficiency of manual transmission with the convenience of a conventional automatic
- Ford Auto-Start-Stop (see right)
- Ford Smart Regenerative Charging – charges the battery every time you brake
- Ford Electric Power-Assisted Steering – a more efficient system that uses less engine power
- Active Grille Shutter – improves aerodynamics and lowers fuel consumption
- Ford Eco Mode driver information system – shows you when you're achieving optimum fuel efficiency
- Shift Indicator – advises you when to change gear for maximum fuel efficiency

Ford EcoBoost

With direct petrol injection, turbocharging and variable valve timing, Ford EcoBoost engines deliver power and torque consistent with larger displacement engines. For example, the 1.6 150 PS EcoBoost engine in the new C-MAX and Grand C-MAX has more power than the 2.0 Duratec petrol engine it replaces, and yet it achieves around 9% better fuel economy and lower CO₂ emissions.

Ford Auto-Start-Stop

When your vehicle is idling at a standstill, the engine automatically shuts down to save fuel consumption. When you want to drive off, the engine immediately restarts.

Electric and Hybrid vehicles

Our electrically-powered vehicles will produce zero emissions. Rechargeable through wall outlets and targeted to get up to 100 miles per charge, they'll be ideal for a daily commute and trips around town. In addition, two next-generation hybrid models are under development.



Working for a cleaner tomorrow

At Ford, we've been quietly and consistently reducing our impact on the environment. Here are just a few headlines:

- Since 2000, we've reduced manufacturing plant energy consumption by over 27% and CO₂ emissions by 31% worldwide
- Between 2003 and 2008, Ford reduced water consumption in its plants across Europe by 40%
- Solar/photovoltaic panels on the roof of our Bridgend engine plant in the UK generate enough power to light an area of around 10,000 square metres
- Almost 300 parts used in European Ford vehicles are made from recycled non-metallic materials – potentially avoiding 17,000 tonnes of waste going to landfill sites every year

Two 85m high wind turbines provide the equivalent electricity needed to power Ford's Dagenham Diesel Centre. With a combined maximum output of 3.6MW, they generate over 6.7million KWh of electricity every year, enough power equivalent to that required to run the plant.

Our Cologne plant utilises hydro-electric power from Norway and Sweden. This reduces CO₂ emissions by 190,000 tonnes a year. Shipping their finished vehicles on Rhine river barges means fewer truck journeys and less fuel consumed to further reduce CO₂ emissions.



If you wish to know more, logon to:
ford.com/go/sustainability



Premium trip computer
Average speed and fuel consumption, trip time and distance, range and outside temperature. (Standard on Zetec/Titanium)



Connected to your friends, connected to your music and with a console that looks this amazing, connected to your car.

Tune in.
Chill out



Bluetooth® and USB

It's the coolest way to stay in tune and in touch, wherever your Ford Ka takes you. This optional feature includes:

- Built-in USB port
- Bluetooth® wireless technology
- Voice Control System*
- MP3 and MP4 file compatibility
- iPod® and iPhone® compatibility
- SMS voice message reader*



Remote audio controls

Convenient toggle switches on the steering wheel let you control the system's key functions with ease.



The Bluetooth® word mark and logos are owned by the Bluetooth SIG, Inc. and any use of such marks by Ford Motor Company Limited and its associated companies is under licence. Other trademarks and trade names are those of their respective owners.

Pearlescent console shown with silver gear knob insert and air vent rings and EATC is standard on Ford Ka Titanium. Optional feature ESP is shown.

*To check Bluetooth®-enabled phone compatibility, please contact your Ford Dealer or visit www.ford-mobile-connectivity.com/home





Image above: Model shown is a Ford Ka Studio with Sunrise paint.

Image opposite: Model shown is a Ford Ka Studio with Fairland/Syracuse interior environment.

Studio



Great to look at. Great to drive. And bursting with character, Studio is the perfect intro to new Ford Ka.

Features:

- Stereo radio/CD player with MP3, AUX jack and 6 speakers
- Body colour bumpers
- Headlight courtesy delay
- Tinted glass
- Electric Power-Assisted Steering (EPAS)
- Intelligent Protection System (IPS) with driver's and front passenger's airbags*
- Anti-lock braking system (ABS) with electronic brake-force distribution (EBD)
- Accessory power socket (12V)
- Tilt-adjustable steering column
- Tyre mobility kit
- ISOFIX
- Rear seat head restraints

*Note: A child seat should never be placed in the front passenger seat when the Ford vehicle is equipped with an operational front passenger's airbag. The safest place for children is properly restrained on the rear seat.

Body colour bumpers
(Standard)

Headlight courtesy delay
The headlights stay on for a few seconds to illuminate the way to your front door. (Standard)

Trip computer
Tells you your range, distance covered, average speed and fuel consumption, plus the time you've been on the road. (Standard)

Floor console with cup holder
(Standard)

MP3 connection
Lets you connect your MP3 player to the car's audio system.
(Optional as part of Music Pack)

Emergency Brake Warning
Front and rear indicators automatically flash during heavy braking, giving other drivers advance warning. (Standard)





Image above: Model shown is a Ford Ka Edge with Strobe metallic paint (option).

Image opposite: Model shown is a Ford Ka Edge with Syracuse/Fairland interior environment.

Edge



Want more? Have it. Edge gives you remote control, power operation and extra clever features. Go on, spoil yourself.

Additional to Studio:

- Body colour door mirror housings with power-operated and heated mirrors
- Body colour door handles and tailgate handle
- Air conditioning
- Electrically-operated front windows, one-shot-down driver's window
- Remote central locking with retractable key
- Easy entry tipping driver's seat with manual height adjustment
- Driver's manual 4-way seat adjustment
- Front passenger's underseat stowage with flip-up cushion
- Driver and front passenger seatback map pockets
- 50:50 split/folding rear seat backs

Body colour door handles
(Standard)



Body colour door mirror housings
With power-operated and heated mirrors.
(Standard)



Body colour tailgate handle
(Standard)



Remote central locking with retractable key
(Standard)



China white door inserts
(Standard)



Seat Upgrade Pack
Superior comfort and convenience, including tipping and memory function, driver's height adjustment, extra storage and more.
(Standard on Studio and Edge)





Image above: Model shown is a Ford Ka Zetec with Midnight metallic paint (option).

Image opposite: Model shown is a Ford Ka Zetec with Coral/Syracuse interior environment, and Bluetooth* and USB (option).

Zetec



If you're looking for the ultimate new Ford Ka, look no further.

Additional to Edge:

- 15" multispoke alloy wheels
- Front fog lights
- Privacy glass
- Pearl White inserts on steering wheel spokes
- Silver insert on gearshift knob
- Quickclear heated windscreen
- Premium trip computer
- Courtesy light delay
- Front and rear premium velour mats
- Headliner stowage net
- Flexible accessory holder
- Leather steering wheel

Flexible accessory holder
Fits around the centre console – with a net on either side. (Standard)

Front fog lights
(Standard)

Premium velour mats
(Standard)

Premium steering wheel with Pearl White insert
(Standard)
Image shown with optional Bluetooth® and USB

Premium trip computer
Average speed and fuel consumption, trip time and distance, range and outside temperature. (Standard)

Pearl White centre console
(Standard)





Image above: Model shown is a Ford Ka Titanium with Piste special paint (option).

Image opposite: Model shown is a Ford Ka Titanium with Fairland/Syracuse interior environment.

Titanium



With Titanium, you're getting into premium equipment levels that would embarrass many much larger cars.

Additional to Zetec:

- 16" 5 Y-spoke alloy wheels
- Advanced Music Pack – including stereo radio/CD player with MP3, AUX jack, subwoofer, amplifier and six premium speakers (deletes underseat stowage)
- Electronic Automatic Temperature Control (EATC)
- Chrome finish door handles and tailgate handle
- Chrome finish exhaust pipe
- Silver gearshift knob insert, air vent rings and door release handles

16" 5 Y-spoke alloy wheels
(Standard)



Premium leather steering wheel with Pearl White insert
(Standard)



Chrome finish door handles
(Standard)



Chrome tailgate handle
(Standard)



Chrome finish exhaust pipe
(Standard)



Gearshift knob in Pearl White with leather insert
(Standard)





Individual is the smartest way to personalise your Ford Ka. Choose from three themes starting with Grand Prix as shown here. And how about your lucky number, from 0 to 9, on the doors? (accessory)



Ford Individual: Grand Prix

- Features** (as Zetec plus):
- 16" 5 Y-spoke alloy wheels
 - Stripe on bonnet, roof and tailgate
 - Rear Spoiler
 - Chrome finish exhaust pipe
 - Bodyside stripes
 - Contrast coloured grille and mirror caps
 - Door-mounted number and circle decals available as an accessory
 - Unique seat design in Red fabric with White inserts
 - White fabric head restraints and Red door inserts
 - Red/Syracuse leather steering wheel with pearlescent insert
 - Red leather handbrake handle with Syracuse gaiter
 - Pearl white gearshift knob with Red leather insert, chrome finish side inserts, Syracuse gaiter and Red stitching
 - Pearl White details on door pulls, air vent rings and centre console
 - Premium velour mats with contrasting Red stitching and embroidered Red Ford Individual logo

*Available in White for Sunrise, and in Sunrise for Crystal and Piste.



Unique Red and White seat fabric design



Image left: Model shown is a Grand Prix Ka, Bluetooth® and USB (option).

Image right: Model shown is a Grand Prix Ka with door number decals (accessory).

Red Leather Handbrake handle
Red stitching and chrome finish rings.
(Also available as an accessory)

Premium velour mats
With contrasting red stitching and embroidered Ford 'Individual' logo. (Standard)

Contrasting door mirror caps
With carbon fibre-look.

Exhaust in chrome finish

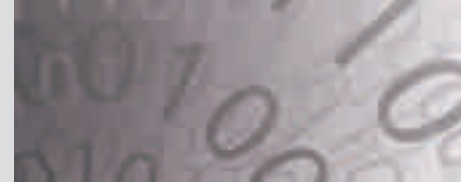
Body colour rear spoiler
(Standard)

16" 5 Y-spoke alloy wheel
(Option)





Join the digital revolution with this dazzling look.



Ford Individual: Digital

- Features** (as Zetec plus):
- 16" 5 Y-spoke alloy wheels ● Chrome finish exhaust pipe ● Stripe on bonnet, roof and tailgate with Digital design ● Bodyside stripes with Digital design
 - Grille and mirror caps in Jump ● Unique seat design in Syracuse fabric with Digital inserts and head restraints ● Lime/Syracuse leather steering wheel with insert and bezel in Jump ● Jump leather handbrake handle with Syracuse gaiter ● Aluminium-look gearshift knob with Lime leather insert, chrome finish side inserts, Syracuse gaiter with Lime contrasting stitching ● Details in Jump on door handles, air vent rings and centre console ● Premium velour mats with contrasting stitching and embroidered Ford Individual logo

Note Digital is available on vehicles with Crystal White, Midnight, Strobe, Moonlight and Piste exterior colours.



Unique Digital seat fabric design
In Syracuse/Lime fabric.



Image right: Model shown is a Digital-themed Ford Ka in Midnight metallic paint (option).

Image opposite: Model shown is a Digital-themed Ford Ka with Bluetooth® and USB (option)

Aluminium-look gearshift knob with Lime leather insert, Syracuse gearshift gaiter and Lime contrast stitching
(Standard)

Lime leather handbrake handle with Syracuse gaiter
(Standard)

Jump-coloured door grab handle inserts
(Standard)

Premium velour mats
Lime contrast stitching and Ford 'Individual' logo.

Contrasting door mirror caps and grille surround
(Standard)

16" 5 Y-spoke alloy wheel
(Standard)





Strong, cool and sophisticated. Metal Ka is always in style.



Ford Individual:
Metal Ka

- Features** (as Zetec, plus):
- 16" 5 Y-spoke alloy wheels
 - B-pillar decal in black with chrome finish Ka logo
 - Chrome finish door handles and tailgate handle
 - Chrome finish exhaust pipe
 - Unique seat design in Black/Raptor fabric with chrome finish rings in Black inserts
 - Black fabric head restraints and door inserts
 - Piano Black instrument cluster housing, centre stack bezel, gearshift bezel, door pulls and flexible accessory holder
 - Chrome-look air vent rings
 - Syracuse leather steering wheel with Silver stitching and Piano Black bezel
 - Syracuse leather handbrake handle with Syracuse gaiter
 - Piano Black gearshift knob with Syracuse leather, chrome finish side inserts and Syracuse leather gaiter
 - Black velour floor mats with aluminium 'Ka' logo
 - Door release lever in chrome finish

Note Metal-Ka is available on vehicles with Midnight, Strobe and Moonlight exterior colours (option).



Unique seat fabric design
In Black/Raptor fabric with chrome-look rings and Black head restraints.



Image right: Model shown is a Metal Ka in Midnight metallic paint finish (option) with 16" metallic black alloy wheels (option and accessory).

Image opposite: Model shown is a Metal Ka themed Ford Ka with EATC, Bluetooth® and USB, and ESP (all available as options).

Syracuse leather handbrake handle
With Black stitching and chrome finish rings.
(Standard)

Black velour floor mats
With aluminium 'Ka' logo. (Standard)

Chrome finish air vent rings

B-pillar decal
In black with chrome finish Ka logo.

Chrome finish details
On exhaust pipe and tailgate handle.

16" 5 Y-spoke alloy wheels
(Standard)





Studio

- **Features:**
 - Body colour bumpers
 - Headlight courtesy delay
 - Tinted glass
 - Electric Power-Assisted Steering (EPAS)
 - Intelligent Protection System (IPS) with driver's and front passenger's airbags*
 - Anti-lock braking system (ABS) with electronic brake-force distribution (EBD)
 - Accessory power socket (12V)
 - Height-adjustable steering column
 - Tyre mobility kit
 - Easy entry tipping driver's and passenger's seat with manual height adjust
 - Rear seat head restraints
 - Integrated ISOFIX child seat mounts in rear seats

- **Engines**
 - Petrol
 - 1.2 Duratec (with Ford Auto-Start-Stop system)

Edge

- **Additional to Studio:**
 - Air conditioning
 - Body colour door mirror housings with power-operated and heated mirrors
 - Body colour door handles and tailgate handle
 - Electrically-operated front windows, one-shot-down driver's window
 - Remote central locking with retractable key
 - Driver's manual 4-way seat adjustment
 - Front passenger's underseat stowage with flip-up cushion
 - Driver and front passenger seatback map pockets
 - 50:50 split/folding rear seat backs

- **Engines**
 - Petrol
 - 1.2 Duratec (with Ford Auto-Start-Stop system)

Zetec

- **Additional to Edge:**
 - 15" multispoke alloy wheels
 - Front fog lights
 - Quickclear heated windscreen
 - Privacy glass
 - Leather steering wheel with pearl white inserts
 - Pearl White flexible accessory holder
 - Silver insert on gear knob
 - Premium trip computer
 - Theatre-style courtesy light dimming
 - Front and rear premium velour mats
 - Headliner stowage net

- **Engines**
 - Petrol
 - 1.2 Duratec (with Ford Auto-Start-Stop system)
 - Diesel
 - 1.3 Duratorq (with DPF and Ford Auto-Start-Stop system)

Titanium

- **Additional to Zetec:**
 - 16" 5 Y-spoke alloy wheels
 - Advanced Music Pack (stereo radio/CD player with MP3, AUX jack, subwoofer, amplifier and six premium speakers)
 - Eleactronic Automatic Temperature Control (EATC)
 - Scuff plates with 'Ka' graphic
 - Chrome finish door handles and tailgate handle
 - Chromefinish exhaust pipe
 - Silver gear knob insert, air vent rings and door release handles

- **Engines**
 - Petrol
 - 1.2 Duratec (with Ford Auto-Start-Stop system)
 - Diesel
 - 1.3 Duratorq (with DPF and Ford Auto-Start-Stop system)

Grand Prix

- **Additional to Zetec:**
 - 16" 5 Y-spoke alloy wheels
 - Rear spoiler
 - Grand Prix exterior and interior styling
 - Chrome finish exhaust pipe

- **Engines**
 - Petrol
 - 1.2 Duratec (with Ford Auto-Start-Stop system)

Digital

- **Additional to Zetec:**
 - 16" 5 Y-spoke alloy wheels
 - Digital exterior and interior styling
 - Chrome finish exhaust pipe

- **Engines**
 - Petrol
 - 1.2 Duratec (with Ford Auto-Start-Stop system)

Metal Ka

- **Additional to Zetec:**
 - 16" 5 Y-spoke alloy wheels
 - Metal exterior and interior styling
 - Chrome finish door handles, tailgate handle and exhaust pipe

- **Engines**
 - Petrol
 - 1.2 Duratec (with Ford Auto-Start-Stop system)
 - Diesel
 - 1.3 Duratorq (with DPF and Ford Auto-Start-Stop system)

*Note: A child seat should never be placed in the front passenger seat when the Ford vehicle is equipped with an operational front passenger's airbag. The safest place for children is properly restrained on the rear seat.

16" 5 Y-spoke alloy wheel
(Standard on Titanium, option on Zetec, and available as an accessory)

Eibach suspension-lowering kit
Enhances driving performance and handling as well as giving a more sporty appearance. Lowers the car by approximately 30 mm. (Accessory)



Make a bold statement with your choice of stunning alloy wheels. You can also have fun combining them with the many options available for the Ford Ka.

Alloy wheels:
Mix and match

Note The 16" wheels available on Ford Ka are designed to deliver more sporting driving characteristics and a firmer ride quality compared to standard 14" and 15" wheels.



14" steel wheel with 6-spoke wheel cover
(Standard on Studio and Edge)



14" 4x2-spoke alloy wheel
(Option on Edge, or as an accessory on all other models)



15" multispoke alloy wheel
(Standard on Zetec, or as an accessory on all other models)



15" 7x2-spoke Silver alloy wheel
Available as an accessory on all models.



15" 7x2-spoke alloy wheel in Frozen White
(Accessory)



16" 5 Y-spoke alloy wheel
(Option on Zetec and Grand Prix II standard on Titanium, Digital and Metal Ka, available as an accessory on all other models)



16" 5 Y-spoke alloy wheel in Piste*
(Available as an accessory on all other models)



16" 5 Y-spoke alloy wheel in metallic black
(Standard on Grand Prix II, Option on Metal, available as an accessory on all other models)

Advanced Music Pack

Includes premium speakers, amp and subwoofer. Your very own gig on wheels. (Standard on Titanium)

Audio
Stereo radio-CD player with MP3 capability, 6 speakers and an AUX jack. (Standard)



New Ford Ka is designed to keep you connected and tuned in when you're out and about

Audio and connectivity:
Stay in touch

Pioneer premium loudspeakers

Pioneer's latest speakers offer unrivalled sound quality, good looks and value for money. (Accessory)

**Connectivity Pack**

Built-in USB port. Lets you listen to, and operate, your MP3 and MP4 player via the car's audio system. (Option)

**Bluetooth® Voice Control System**

Lets you control your Bluetooth® compatible mobile phone* and audio system with the sound of your voice. (Part of Bluetooth® and USB Option).

**Bluetooth® connection**

Bluetooth® wireless technology enables wireless connection between your mobile phone and the hands-free kit installed in your car. (Option)

**SMS reader**

SMS messages can be read via your car's audio system when received on a mobile phone that is Bluetooth®-enabled*. The SMS reader informs you of a new message on your mobile phone and the sender. You can also re-read previously saved messages, make a voice call to the sender or delete messages.

**Portable navigation**

Leave your maps behind with a simple and intuitive portable GPS navigation system. Please contact your Ford Dealer for details (accessory).



Note The Bluetooth® word mark and logos are owned by the Bluetooth SIG, Inc. and any use of such marks by Ford Motor Company Limited and its associated companies is under licence. Other trademarks and trade names are those of their respective owners.

*To check Bluetooth®-enabled phone compatibility, please contact your Ford Dealer or visit www.ford-mobile-connectivity.com/home

Make an impression

Model shown is a Ka Titanium with a Tattoo decal (accessory) in Dive metallic paint (option)

Body colour rear spoiler
Available as an option or accessory. Shown in Strobe metallic body colour (option).



We're all different. So why not show it? Express yourself with our exterior styling accessories and boost your new Ford Ka's versatility with our range of carrier systems.

Exterior style:
Express yourself

This brochure shows both original Ford accessories as well as a range of carefully selected products from third party suppliers, which are identified under that third party supplier's brand name. Please note that third party supplier branded accessories do not come with a Ford warranty but are covered by the third party suppliers own warranty, the details of which can be obtained from your Ford Dealer.

**Ford Lifestyle Collection Mountain Bike**

For off-road and fun excursions. This lightweight mountain bike with the new Ford full suspension aluminium frame is a real thoroughbred. (Accessory)

Britax Römer child seat*

Various seats available for all ages, also with ISOFIX.

*Note: A child seat should never be placed in the front passenger seat when the Ford vehicle is equipped with an operational front passenger's airbag. The safest place for children is properly restrained on the rear seat.

**Thule bicycle carrier attachment**
(Accessory)**Thule ski/snowboard carrier**
(Accessory)**Base roof carrier**

Carrier is the base platform for all roof transportation accessories. (Accessory)

Front and rear mudflaps
(Accessory)

ClimAir® wind deflector
Reduces wind turbulence and noise, allowing you a more enjoyable drive with the windows down, even during light rain. (Accessory, front and rear available)



Leather Pack

Consists of leather trimmed seats (choice of either Florida or Syracuse), leather door inserts, heated seats, Pearl White gear knob with leather insert, and leather handbrake handle (option on Titanium).

Aluminium pedal set
(accessory)

The range of custom-designed options and accessories for new Ford Ka's interior is the perfect opportunity to indulge your love of style.

**Interior style:
Express yourself****Heated front seats**

Perfect for your bottom on cold mornings. (Included with optional leather pack)

Anti-slip mat

Luggage compartment protection, moulded to fit perfectly into the Ford Ka. Incorporates anti-slip surface. (Accessory)

Leather seat trim

Shown in Syracuse (left) and Florida (right). Also includes leather door inserts and heated front seats. (Option – available on Titanium models only)



Image opposite: Model shown is a Ka Titanium with optional Leather Pack, Bluetooth®, USB and ESP

Scuff plates with 'Ka' graphics

(Standard on Titanium and available as an accessory)

Premium velour floor mats

Premium velour floor mats in Syracuse. (Standard on Zetec and Titanium and available as an accessory)

Flexible accessory holder

Fits around the centre console – with a net on either side. (Standard on Zetec and Titanium, and available as an accessory)



Exterior equipment

	Studio	Edge	Zetec	Titanium	Grand Prix II	Metal Ka	Digital
Design features							
Door mirrors – Black housing, manually adjusted	●	–	–	–	–	–	–
Door mirrors – Body colour housing, heated and power-operated	–	●	●	●	–	●	–
Door mirrors – Contrasting accent colour housings, heated and power-operated	–	–	–	–	–	–	●
Door Mirror – Carbon fibre-look housings, heated and power-operated	–	–	–	–	●	–	–
Bumpers – Body colour front	●	●	●	●	●	●	●
Bumpers – Body colour rear	●	●	●	●	●	●	●
Grille surround – Cargon fibre-look	–	–	–	–	●	–	–
Grille Surround – Painted in Midnight Black	–	–	–	–	–	●	–
Door handles – Self colour	●	–	–	–	–	–	–
Door handles – Body colour	–	●	●	–	●	–	●
Door handles – Chrome	–	–	–	●	–	●	–
Exhaust finisher – Chrome	–	–	–	●	●	●	●
Paint – Solid	●	●	●	●	●	●	●
Paint – Metallic	○	○	○	○	○	○	○
Paint – Special	–	–	○	○	○	○	–
Front fog lights	–	–	●	●	●	●	●
Tinted glass	●	●	–	–	–	–	–
Privacy glass (rear window only)	–	–	●	●	●	●	●
Rear spoiler (Body colour)	–	–	○	○	●	○	○
Tailgate handle – Self colour	●	–	–	–	–	–	–
Tailgate handle – Body colour	–	●	●	–	●	–	●
Tailgate handle – Chrome	–	–	–	●	–	●	–
Wheels							
Steel – 14"x5½", 6-spoke wheel cover, 175/65 tyres	●	●	–	–	–	–	–
Alloy – 14"x5½", 5x2-spoke, 175/65 tyres	–	○	–	–	–	–	–
Alloy – 15"x6", 13-spoke, 195/50 tyres	–	–	●	–	–	–	–
Alloy – 16"x6½", 5x2-spoke 'Silver' 195/45 tyres	–	–	○	●	○	●	●
Alloy – 16"x6½", 5x2-spoke 'Black', 195/45 tyres	–	–	–	–	●	–	○
Locking wheel bolts (with alloy wheels)	–	□	●	●	●	●	●
Non-locking wheel bolts	●	●	–	–	–	–	–
Tyre Mobility Kit	●	●	●	●	●	●	●
Mini Spare Wheel	○	○	○	○	○	○	○

Equipment

Exterior equipment

	Studio	Edge	Zetec	Titanium	Grand Prix II	Metal Ka	Digital
Exterior bodystyling features							
Individual 'Grand Prix II' – 16" alloys in Black, carbon fibre-look front bumper grille surround, carbon fibre-look exterior adhesive foils, chromeexhaust pipe finisher and body colour rear spoiler	–	–	–	–	●	–	–
Individual 'Digital' – 16" alloy wheels, exterior adhesive foils in Digital design, unique front bumper grille and coloured surround in Jump, mirror capings in Jump, chrome exhaust pipe finisher	–	–	–	–	–	–	●
Individual 'MetalKa' – 16" alloy wheels, front bumper grille surround painted in Black, body colour mirror caps, chrome finish door and tailgate handles, chrome finish exhaust pipe and gloss Black B-pillar foil with chrome finish KA logo	–	–	–	–	–	●	–
Convenience features							
Parking Distance Sensor – Rear	○	○	○	○	○	○	○
Wipers – Front aero blades, with speed dependent variable intermittent and anti-drip function	●	●	●	●	●	●	●
Wipers – Rear, wash/wipe includes reverse gear wipe	●	●	●	●	●	●	●
Windscreen – Heated, with heated washer jets	–	–	●	●	●	●	●
Front towing hook	●	●	●	●	●	●	●
Lights							
Centre high-mounted stop light	●	●	●	●	●	●	●
Headlight – Single chamber halogen headlight	●	●	●	●	●	●	●
Headlight – Courtesy delay feature	●	●	●	●	●	●	●
Headlight – Manual headlight control	●	●	●	●	●	●	●
Headlight – Levelling	●	●	●	●	●	●	●

● = Standard, ○ = Option at extra cost, □ = Part of an option pack, at extra cost.

Interior equipment

	Studio	Edge	Zetec	Titanium	Grand Prix II	Metal Ka	Digital
Design features							
Floor mats – Front and rear, velour	–	–	●	●	●	●	●
Floor carpet	●	●	●	●	●	●	●
Gearshift knob – Studio, Edge	●	●	–	–	–	–	–
Gearshift knob – Zetec, Titanium	–	–	●	●	–	–	–
Gearshift knob (unique design on Grand Prix, Metal Ka, Digital and Titanium as part of Leather Pack)	–	–	–	○	●	●	●
Handbrake cover	●	●	●	●	–	–	–
Handbrake cover (unique design on Grand Prix, Metal Ka, Digital and Titanium as part of Leather Pack)	–	–	–	○	●	●	●
Steering wheel – 3-spoke	●	●	–	–	–	–	–
Steering wheel – Leather (Grand Prix, Metal Ka and Digital includes unique colouring)	–	–	●	●	●	●	●
Steering column – Rake adjustable	●	●	●	●	●	●	●
Individual 'Grand Prix II' – Red fabric seats with carbon fibre-look vinyl inserts, carbon fibre-look vinyl head restraints, Red fabric door panel inserts, carbon fibre-look centre stack bezel, carbon fibre-look gearshift bezel, carbon fibre-look door pulls, air vent rings and cluster housing painted in Sunrise. Red and Syracuse leather steering wheel with Red stitch and Sunrise painted bezel, Sunrise painted gearshift knob with Syracuse leather and shiny chrome finish inserts, Syracuse vinyl gearshift gaietr with Red stitching, Red leather handbrake handle with Red stitching and chrome finish rings, Sunrise instrument panel stowage net, Black velour floor mats with carbon fibre-look piping and Red double stitching, chrome finish door release levers	–	–	–	–	●	–	–
Individual 'Digital' – Flexible accessory holder in Green, door grab handle in Green, bezel lower gear shifter in Green, air vent bezels in Green, cluster bezel in Green, centre stack bezel in Green, velour floor mats in Digital design, leather steering wheel in Digital design, aluminium/green leather gear knob, leather handbrake handle in Digital design, seat and door trim in Digital design	–	–	–	–	–	–	●
Individual 'Metal Ka' – Black/Raptor fabric seats with black inserts with chrome finish rings, head restraints in black fabric, black fabric door inserts, Piano Black painted centre stack bezel, Piano Black gearshift bezel, Piano Black door pulls, Piano Black painted instrument cluster housing, chrome finish air vent rings, Syracuse leather steering wheel with Silver stitching and bezel in Piano Black, Piano Black painted gearshift knob with Syracuse leather and chrome finish inserts, Syracuse vinyl gearshift gaiter with Black stitching, Syracuse leather handbrake handle with black stitching and chrome finish rings, Syracuse vinyl handbrake gaiter with black stitching, Piano Black painted instrument panel stowage net, black velour floor mats with aluminium Ka logo, chrome finish door release lever	–	–	–	–	–	●	–
Audio and communication systems							
CD radio with MP3 and AUX-in connector, six radio speakers	●	●	●	–	●	●	●
Advanced Music Pack – CD radio with MP3 with in-mould decoration, AUX-in connector, subwoofer and amplifier, six high series radio speakers (deletes underseat stowage)	–	–	–	●	–	–	–
Bluetooth® and USB – Bluetooth® Hands Free Phone and Voice Control System with USB connectivity port, remote audio controls and high series cluster	○	○	○	○	○	○	○
Climate control							
Air conditioning – Manual control, includes pollen filter	–	●	●	–	●	●	●
Air conditioning – Electronic Automatic Temperature Control (EATC), includes pollen filter	–	–	–	●	–	–	–

Interior equipment

	Studio	Edge	Zetec	Titanium	Grand Prix II	Metal Ka	Digital
Comfort and convenience							
Accessory power socket (12V)	●	●	●	●	●	●	●
Floor mounted centre console – With single cup holder	●	●	●	●	●	●	●
Flexible accessory holder – Pearl White	–	–	●	●	●	–	–
Flexible accessory holder – Jump	–	–	–	–	–	–	●
Flexible accessory holder – Piano Black	–	–	–	–	–	●	–
Flexible accesory holder – Sunrise	–	–	–	–	●	–	–
Front dome light	●	●	●	●	●	●	●
Theatre-style dimming	–	–	●	●	●	●	●
Loadspace compartment light	●	●	●	●	●	●	●
Driver sunvisor with flip-up vanity mirror and stowage loop	●	●	●	●	●	●	●
Passenger sunvisor	●	●	–	–	–	–	–
Passenger sunvisor with vanity mirror	–	–	●	●	●	●	●
Stowage box – Front passenger's underseat area (deleted on Titanium with the inclusion of Advanced Music Pack)	–	●	●	–	●	●	●
Windows – Front manual	●	–	–	–	–	–	–
Windows – Front electrically-operated with driver's one shot up/down and passenger's one shot down	–	●	●	●	●	●	●
Low series analogue cluster	●	●	–	–	–	–	–
High series analogue cluster (includes trip computer)	–	□	●	●	●	●	●
Seats							
Front seat – Driver seat manual 2-way adjust (fore/aft)	●	–	–	–	–	–	–
Front seat – Driver seat manual 4-way adjust (fore/aft, up/down)	–	●	●	●	●	●	●
Front seat – Driver tipping seat with easy entry, driver memory function	●	●	●	●	●	●	●
Front seat – Driver seat BeltMinder™	●	●	●	●	●	●	●
Front seat map pockets – Driver and passenger	–	●	●	●	●	●	●
Passenger seat – Manual 2-way adjust	●	●	●	●	●	●	●
Passenger seat – Tipping seat with easy entry	●	●	●	●	●	●	●
Heated front seats (standard with leather seats)	–	–	–	□	–	–	–
Rear seat – One-piece foldable bench seat	●	–	–	–	–	–	–
Rear seat – 50:50 split rear seat	–	●	●	●	●	●	●
Rear seat – Head restraints	●	●	●	●	●	●	●
Rear seat – ISOFIX mounts	●	●	●	●	●	●	●
Leather Pack – Choice of either Florida or Syracuse Leather trim, heated front seats, Pearl White gearshift knob, and unique handbrake cover	–	–	–	○	–	–	–
Loadspace							
Removable parcel shelf	●	●	●	●	●	●	●
Loadspace floor carpet	●	●	●	●	●	●	●

● = Standard, ○ = Optional, at extra cost, □ = Part of an option pack, at extra cost. The Bluetooth® word mark and logos are owned by the Bluetooth SIG, Inc. and any use of such marks by Ford Motor Company is under licence. Other trademarks and trade names are those of their respective owners.

Safety and security

	Studio	Edge	Zetec	Titanium	Grand Prix II	Metal Ka	Digital
Safety							
Anti-lock braking system (ABS) with electronic brake-force distribution (EBD)	●	●	●	●	●	●	●
Emergency Brake Assist (EBA)	●	●	●	●	●	●	●
Electronic Stability Programme (ESP), includes Hydraulic Brake Assist (HBA) and Hill Start Assist	○	○	○	○	○	○	○
Emergency Brake Warning – Automatic activation of hazard warning lights under heavy braking	●	●	●	●	●	●	●
Airbags – Driver’s and front passenger’s single stage*	●	●	●	●	●	●	●
Airbags – Curtain airbag (includes side airbag pack Pelvis and Thorax)	○	○	○	○	○	○	○
Airbag – Front passenger’s airbag de-activation switch (requires Dealer activation)*	●	●	●	●	●	●	●
Front seat belt double pre-tensioners	●	●	●	●	●	●	●
Rear 3-point seat belt in all positions	●	●	●	●	●	●	●
Maximum speed pre-selection function	●	●	●	●	●	●	●
Security							
Manual locking	●	–	–	–	–	–	–
Remote control central single locking with key fob (retractable) and tailgate button	–	●	●	●	●	●	●
Engine immobiliser – Passive Anti-Theft System (PATS)	●	●	●	●	●	●	●

● = Standard, ○ = Optional, at extra cost. ***Note: A child seat should never be placed in the front passenger seat, when the Ford vehicle is equipped with an operational front passenger’s airbag. The safest place for children is properly restrained on the rear seat.**

Mechanical features

	Studio	Edge	Zetec	Titanium	Grand Prix II	Metal Ka	Digital
Steering							
Electric power-assisted steering (EPAS)	●	●	●	●	●	●	●
Suspension							
Front – Independent with MacPherson struts, and subframe-mounted 'L' arm.	●	●	●	●	●	●	●
Rear – Twist-beam with coil springs plus additionalanti-roll bar	●	●	●	●	●	●	●
Technology							
Ford Auto-Start-Stop	●	●	●	●	●	●	●
Shift Indicator	●	●	●	●	●	●	●

● = Standard.

Specifications

Fuel, performance and emissions

	Transmission	Max. Power PS (kW)	Torque Nm (Nm with Overboost)	CO ₂ Emissions (g/km) ⁹⁰	Fuel Consumption L/100 km (mpg) ⁹⁰			Performance ⁹			Gross Vehicle Mass (kg)
					Urban	Extra Urban	Combined	Max. speed mph	0-62 mph (secs)	31-62 mph* (secs)	
3-door											
1.2 Duratec	M5	69 (51)	102	115	5.8 (48.7)	4.4 (64.2)	4.9 (57.7)	99	13.4	13.3	1350
1.3 Duratorq TDCi	M5	75 (55)	145	109	4.9 (57.7)	3.7 (76.4)	4.1 (68.9)	99	13.6	11	1437

*In 4th gear. ⁹Ford test figures. ⁹⁰All CO₂ emissions figures in g/km and fuel consumption figures in L/100 km are from officially approved tests in accordance with EEC Directive 1999/100/EC. The CO₂ emissions and fuel consumption test figures shown in the chart do not express or imply any guarantee of the emissions or fuel consumption of a car of the class in question. All the figures are based on tests conducted on vehicles with standard wheels and tyres; optional or accessory wheels and tyres may have an effect on the emissions and fuel consumption of a vehicle. **Note:** All vehicles are Durashift 5-speed manual. ¹The fuel economy data published above relate to use of petrol 95 RON; use of alcohol fuel or a mixture of petrol and alcohol will lead to other fuel economy data. BP Ultimate, a range of advanced performance fuels, is the perfect partner to meet the most demanding needs of Ford's class-leading technology. BP Ultimate can boost power and acceleration, lower exhaust emissions and improve fuel economy, compared with ordinary fuels.

Dimensions

Overall length (mm)	3620
Overall width with/without mirrors (mm)	1894/1658
Overall width with folded back mirrors (mm)	1702.7
Overall height (unladen) (mm)	1505
Minimum distance between wheel arches (in luggage compartment) (mm)	1018
Turning circle – Kerb to kerb (m)	9.8
Luggage capacity (litres)*	
4-seat mode	224
2-seat mode (laden to roof)	747
Fuel tank capacity (litres)	
Petrol	35
Diesel	35

*Measured in accordance with ISO 3832. Dimensions may vary dependent on the model and equipment fitted.

Colour and trim

Model	Studio	Edge	Zetec		
Seat insert pattern and colour	Abstract in Fairland	Abstract in Fairland	Abstract in Coral	Track in Fairland	Track in Coral
Centre stack bezels/Door pull grab handle	China White	China White	China White	Pearl White	Pearl White
Feature colour/Environment colour	Syracuse/ Fairland	Syracuse/ Fairland	Syracuse/ Fairland	Syracuse/ Fairland	Syracuse/ Fairland
Solid body colours					
Crystal	●	●	–	●	–
Sunrise	●	–	●	–	●
Metallic body colours					
Dive	○	○	–	○	–
Moonlight	○	○	–	○	○
Midnight	○	○	○	○	○
Scuba	○	○	–	○	–
Strobe	○	○	–	○	–
Special metallic colours					
Piste	–	–	–	○	○
Blush	–	–	–	○	–

● = Available, ○ = Option at extra cost, – = Not available.

Specifications

Titanium				Grand Prix II	Metal Ka	Digital
Track in Fairland	Track in Coral	Leather in Syracuse Pearl*	Leather in Florida Pearl*	Carbon fibre vinyl in Black	Lily in Black with Embosed rings	Abstract in Digital*
Pearl White	Pearl White	Pearl White	Pearl White	Carbon fibre-look	Black	Jump
Syracuse/ Fairland	Syracuse/ Fairland	Syracuse/ Fairland	Dark Florida/ Florida	Grand Prix II	Metal	Digital
●	–	○	–	–	●	●
–	●	○	–	●	–	–
○	–	○	○	–	–	–
○	○	○	–	○	○	○
○	○	○	–	○	○	○
○	–	○	○	–	–	–
○	–	○	–	○	○	○
○	○	○	–	○	–	○
○	–	○	○	–	–	–

Fabric in Fairland/Syracuse
(Studio and Edge)



Fabric in Coral/Syracuse
(Edge)



Fabric in Fairland/Syracuse
(Zetec and Titanium)



Fabric in Coral/Syracuse
(Zetec and Titanium)



Leather in Syracuse**
(Titanium)



Leather in Florida**
(Titanium)



Red fabric with White
inserts/Syracuse
(Grand Prix)



Syracuse fabric with Digital
inserts/Syracuse
(Digital)



Black/Raptor fabric with
chrome-look rings/Syracuse
(Metal)



Moonlight
Metallic body colour*



Crystal*
Solid body colour



Strobe
Metallic body colour*



Sunrise
Solid body colour



Scuba
Metallic body colour*



Dive
Metallic body colour*



Piste
Special metallic body colour*



Midnight
Metallic body colour*



Blush
Special metallic body colour*

*Optional at extra cost.

The Ford Ka is covered by the Ford Perforation Warranty for 8 years from the date of first registration. Subject to terms and conditions.

Note The car images used are to illustrate body colours only and may not reflect current specification. Colours and trims reproduced within this brochure may vary from the actual colours, due to the limitations of the printing processes used.

Making life easy

Our range of finance, insurance, service and assistance options is designed with just one thing in mind – making life easy for you.

Ford Credit

When it comes to financing your vehicle, our size and expertise means we're well placed to provide you with a range of finance plans. An application for finance is straightforward and you'll usually get a decision within 15 minutes.

So what can your Ford Dealer provide?

Ford Options offers the flexibility to renew your Ford at anytime during your agreement - you're in complete control. At the end of the agreement you can Renew, Return or Retain your Ford.

Ford Options Cashplan provides all of the flexibility of Ford Options whilst freeing you from the need to make regular payments.

Ford Acquire is ideal if you're a private or business user who wants a traditional and convenient financing plan to own your vehicle. Simply put down a deposit, pay the remainder, plus interest, over an agreed period and the vehicle becomes yours.

Ford Lease* provides simple, tailored funding solutions for your business, whatever the size. Business users only.

Ford Insure** is our comprehensive motor insurance product, designed specifically for Ford drivers.

For more information on our finance products please visit **ford.co.uk**.

Finance subject to status. Guarantees/indemnities may be required, Freepost Ford Credit.

*Ford Lease is provided by ALD Automotive Ltd, trading as Ford Lease, Oakwood Park, Lodge Causeway, Fishponds, Bristol, BS16 3JA. ALD Automotive is registered in England No. 987418. For the purposes of the Data Protection Act 1998 the data controllers in relation to any information you supply are Ford Motor Company Limited, FCE Bank Plc and ALD Automotive. Finance subject to status. Guarantees and indemnities may be required. ALD Automotive is authorised and regulated by the Financial Services Authority.

**Ford Insure is underwritten and administered by Royal & Sun Alliance Insurance plc, which is authorised and regulated by the Financial Services Authority. FCE Bank plc is authorised and regulated by the Financial Services Authority and acts as an insurance intermediary in relation to Ford Insure. In relation to this same product, Ford Motor Company Limited is an appointed representative of FCE Bank plc. Ford Motor Company Limited acts as an insurance intermediary. Calls may be recorded and monitored.

Configure your Ford & apply for finance online

Choose and change bodystyle, colour, trim and options, and instantly see how your new Ford will look from many angles. You can even get a price and finance quotation for your configured car and apply for finance with Ford Credit online.

Services

Ford Protect

Your new Ford is protected by a 3-year/60,000-mile Ford Protect Classic Plan Warranty, and comes with Ford Assistance roadside cover throughout the UK and Europe for 1 year. You can also upgrade to a Ford Protect Premium Plan, giving you the option of scheduled servicing and extended Ford Assistance.

Ford Service

Like any vehicle, your new Ford needs servicing regularly to keep it in the best condition and to maintain its value. The Ford authorised repairer network is independently quality checked to ensure the highest standards of workmanship are maintained. Ford has the largest repairer network in the UK, and uses Ford-trained technicians, Ford-specific tools and the latest computerised diagnostic equipment specifically for your Ford.

Ford Accident Repair Centres

Should your Ford require accident repair, an approved Ford Accident Repair Centre is the best place to return your vehicle to its pre-accident condition. Repairers displaying the Ford Accident Repair Centre sign meet the rigorous customer service, technical and quality standards demanded by Ford. Ford trained technicians, the latest repair equipment and the use of original parts mean that the future safety and value of your vehicle are assured.

Contacts

Ford Customer Relationship Centre

In the unlikely event that your Ford Dealer can't help you or if you need to speak to us directly, call 0845 841 1111 at local rates.

Ford Rental - local service nationwide

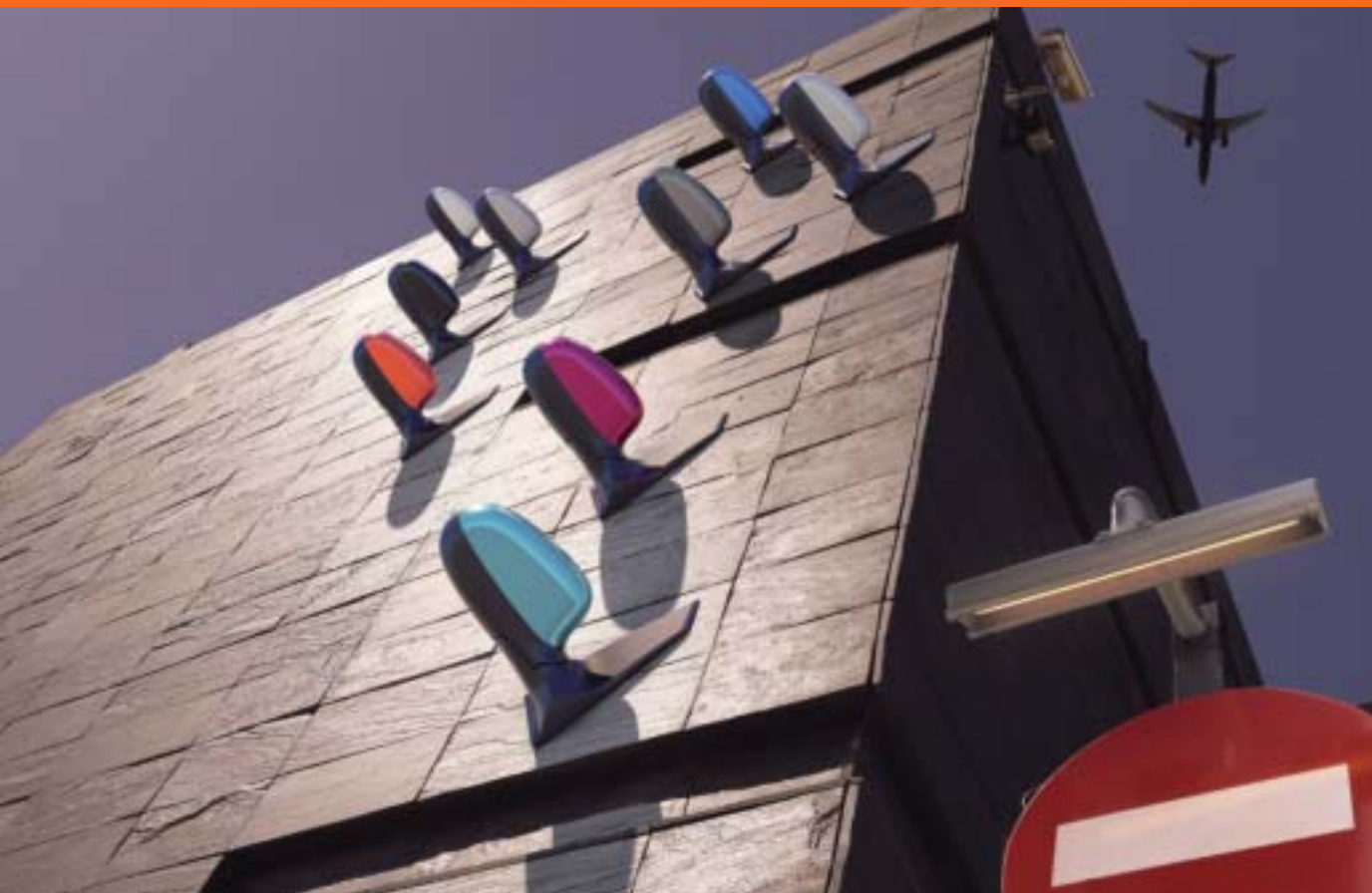
Car and van rental from our latest model range. Contact your local Ford Dealer for more information.

Ford Mobility

Our dedicated care centre provides free information on all motoring and mobility issues, including special offers for HRDLA and Motability recipients.

Call us on 0845 6040019 at local rates.





MY 2012.25 GBR en

Illustrations, descriptions and specifications. This brochure was correct at the time of going to print. However, Ford policy is one of continuous product development. The right is reserved to change specifications, colours and prices of the models and items illustrated and described in this publication at any time. For the latest details always consult your Ford Dealer. **Optional equipment.** Throughout this publication, wherever a feature is described as being an 'Option' or 'Optional Fitment/Pack', etc., you should assume that it will be at extra cost to the base vehicle, unless specifically stated to the contrary. All models and colour combinations are subject to availability. **Note.** Some images portrayed are of a pre-production model and/or are computer generated, therefore, the design/features on the final version of the vehicle may differ in various respects. In addition, some of the features shown on the vehicles may be optional. **Note.** This brochure contains both original Ford accessories as well as a range of carefully selected products from our suppliers, which are featured under their own brands. All supplier branded products are subject to warranty terms defined by the relevant suppliers and do not lie within the responsibility of Ford. **Note.** The Bluetooth® word mark and logos are owned by the Bluetooth SIG, Inc. and any use of such marks by Ford Motor Company is under licence. Other trademarks and trade names are those of their respective owners.

The Government fuel figures do not express or imply any guarantee of the fuel consumption of any particular car. The cars themselves have not been tested and there are inevitably differences between individual cars of the same model. In addition, a car may incorporate particular modifications. Furthermore, the driver's style and road and traffic conditions, as well as the extent to which the car has been driven and the standard of maintenance, will affect its fuel consumption. **Insurance groups** are only as recommended by the Association of British Insurers. You should always consult your insurance adviser for confirmation.



Collect Nectar points at participating Ford Dealers and Authorised Repairers now. So take a look at the latest Ford Service Promotions by visiting the Owner Services section within www.ford.co.uk.



Ford and BP – working together to reduce fuel consumption and emissions.



Published by Ford Motor Company Limited,
Brentwood, Essex, England.
Registered in England No. 235446.
FA 1537/6
INS2011/014 Exp 30-09-2012
BJN 308034. FoE H43E.
PN 173502/1111/35m/GBR en
November 2011.
© Ford Motor Company Limited.

www.ford.co.uk