

# 2010 | SPORT TRAC



Drive one.

UTILIZE **BOTH SIDES** OF ITS PERSONALITY.



Pickup truck. SUV. Discover both in the 2010 Ford Sport Trac. Its utmost expression: the available Adrenalin Package (shown). Standout touches include a Black grille, dramatic front and rear fascias, and 20-in. polished-aluminum wheels. Inside, a Dark Charcoal interior features perforated leather-trimmed, heated seats. Capability. Versatility. That's Sport Trac utility.



**Drive one.**

Sport Trac Limited in Colorado Red with Adrenalin Package and available equipment.



**POWER** TO THE PAVEMENT.  
OR DIRT OR ROCK OR SNOW.



Sport Trac XLT in Black Pearl Slate Metallic with available equipment.

Whatever the terrain, Sport Trac empowers your journey. Its available Control Trac® 4-wheel-drive system transitions easily from everyday driving to off-road crawling. Standard Trailer Sway Control and AdvanceTrac® with RSC® (Roll Stability Control™) monitor vehicle motion and take measures to help keep Sport Trac and trailer under control. Its available free-breathing V8 delivers 292 horsepower. Carry on.



#### **PULLING POWER**

When equipped with the available V8 engine and Class III/IV Trailer Tow Package, Sport Trac 4x4 can tow up to 3175 kg (7000 lbs.). Standard Trailer Sway Control automatically applies vehicle braking if the trailer begins to sway!

<sup>1</sup>When properly equipped.



#### **INDEPENDENT MINDED**

An independent rear suspension that provides 224 mm (8.8 in.) of total vertical rear-wheel travel contributes greatly to Sport Trac's agility.



Clip it. Store it. Cover it. Lock it down. Ford Sport Trac carries the gear for every day's adventure, whether your playground is the narrow streets of a city centre or the upper rims of some grand canyons. Inside its cab and versatile cargo box, there's space for everything. (a) The dent-proof, scratch-resistant moulded liner of the cargo box withstands the worst. Up to 1062 litres (37.5 cu. ft.) of gear fits inside. (b) Cargo box gear bins, with weather-resistant lids and drain plugs, are perfect for keeping items dry – or even on ice! (c) The available hinged, hard, locking tonneau cover can be opened at the front or back, or removed, as needed.



# ZIPLINE TO ADVENTURE.



# OASIS OF COMFORT AND REFUGE.



**SYNC**  
Powered by **Microsoft**

**SIRIUS**  
SATELLITE RADIO

Find your place of refuge inside Sport Trac's spacious cabin, where you can comfortably seat as many as 5 adults. Sport Trac Limited gets luxurious leather trim with heated front seats. Keep the 60/40 split-folding rear seat up for 3 passengers, fold one side down for gear and leave the other up for passengers, or fold it all down for maximum cargo-carrying capability.

Available Ford SYNC<sup>®</sup>, developed in association with Microsoft<sup>®</sup>, works with your paired Bluetooth<sup>®</sup>-enabled mobile phone and your digital media player or USB drive to make calls, play music and more — all with the touch of a button or simple voice commands.<sup>1</sup>

With standard SIRIUS<sup>®</sup> Satellite Radio,<sup>2</sup> surf up to 120 channels including 100% commercial-free music, plus the best sports, news, talk and entertainment, all across Canada.



## VOICE-ACTIVATED NAVIGATION

Displayed on a 6.5-in. LCD touch screen, the available Navigation System features easy voice activation for everything from driving directions to accessing tunes. It also provides nearly 10 gigs of storage space for photos and music (up to 2400 songs).

<sup>1</sup>Driving while distracted can result in loss of vehicle control. Only use mobile phones and other devices, even with voice commands, when it is safe to do so. Microsoft is a registered trademark of Microsoft Corporation. The Bluetooth word mark is a trademark of the Bluetooth SIG, Inc. <sup>2</sup>See your Ford of Canada Dealer or contact SIRIUS at 1-888-539-7474 for more information.

Sport Trac Limited leather-trimmed interior in Camel with Sand inserts and available equipment.

LET'S BE **CAREFUL** OUT THERE.



Sport Trac Limited in Black with available equipment.

It helps when your standards include AdvanceTrac® with RSC® (Roll Stability Control™),<sup>1</sup> the industry's only electronic stability control system with 2 gyroscopic sensors, including a unique vehicle-roll motion sensor. The sensor measures the roll rate 100 times every second and determines when and how to apply brakes and modify engine power to help keep all wheels firmly planted. Additional peace of mind comes from the standard SOS Post-Crash Alert System,<sup>TM2</sup> which activates the hazard lights and horn to call attention to your vehicle in certain collisions. New this year, available SYNC features class-exclusive 911 Assist<sup>TM</sup> that can make an emergency call from your paired mobile phone if any airbag deploys.<sup>3</sup> And unlike other systems that send you to a call centre first, SYNC connects you directly to a 911 operator.

<sup>1</sup>Remember that even advanced technology cannot overcome the laws of physics. It's always possible to lose control of a vehicle due to inappropriate driver input for the conditions. <sup>2</sup>SOS hardware may become damaged or the battery may lose power in a crash, which could prevent operation. Not all crashes will activate an airbag or safety belt pretensioner. <sup>3</sup>The vehicle's electrical system (including the battery), the wireless service provider's signal, and a connected mobile phone must all be available and operating for 911 Assist to function properly. These systems may become damaged in a crash. The paired mobile phone must be turned on, connected to SYNC, and the 911 Assist feature enabled in order for 911 to be dialed.



#### **SUITE PROTECTION**

Our standard Intelligent Safety System<sup>TM</sup> (ISS) enhances your protection in certain frontal collisions. Its suite of sophisticated sensors adjust the performance of the adaptive front airbags and adaptive load-limiting safety belt retractors. Front-seat side airbags and side-curtain airbags, which cover both rows of the vehicle, are also standard.



# SPECIFICATIONS

## Standard Equipment

### Mechanical

4-wheel Anti-lock Brake System (ABS)
Class II trailer tow hitch receiver
Control Trac® 4-wheel-drive (4WD) system
Independent front and rear suspension
Non-limited-slip rear axle — 3.73 ratio (3.55 with V8)
One-touch integrated start

### Safety/Security

Adaptive driver and front-passenger front airbags¹
Adaptive energy-absorbing steering column
AdvanceTrac® with RSC® (Roll Stability Control™)
Belt-Minder® front safety belt reminder
Front-Passenger Sensing System
Front-seat side airbags¹
LATCH — Lower anchors and tether anchors for child-safety seats (in rear-outboard seats)
Remote keyless-entry system
3-point safety belts (height-adjustable with pretensioners and adaptive load-limiting retractors in front outboard positions)
Safety Canopy® System with side-curtain airbags¹ and rollover sensor
SecuriCode™ keyless-entry keypad
SecuriLock® passive anti-theft engine immobilizer system
SOS Post-Crash Alert System™
Tire Pressure Monitoring System (excludes spare)
Trailer Sway Control

### Interior

60/40 split-folding rear bench seat
Auto-dimming rearview mirror
Auxiliary audio input jack
Coat hooks — 2
Floor console with floor shifter
Front dome/map lights
Grab handles — 1 for front passenger and 2 in rear
Illuminated glove compartment
Power points — 3
Power windows with one-touch-down driver-window feature
Rear window — Power-sliding
SIRIUS Satellite Radio with 6-month prepaid subscription
Steering wheel — Leather-wrapped with secondary audio controls and cruise control
Sun visors with illuminated vanity mirrors
Tilt steering column

### Exterior

Cargo box — Composite material with 3 storage compartments
Cargo box — Power point
Cargo box — Tie-downs
Fog lamps
Grille — Chrome, 3-bar design with nostrils
Power sideview mirrors with security approach lamps

¹Always wear your safety belt and secure children in the rear seat.

“SIRIUS,” the SIRIUS dog logo, channel names and logos are trademarks of SIRIUS XM Radio Inc. Subscriptions governed by SIRIUS Terms and Conditions at siriuscanada.ca.

## Features & Options

		XLT — 4x4
		Limited — 4x4 or AWD²
	<b>Mechanical</b>	
<input type="radio"/>	—	4.0L SOHC V6 engine with 5-speed automatic transmission
<input type="radio"/>	<input checked="" type="radio"/>	4.6L 3-valve V8 engine with 6-speed automatic transmission and non-limited-slip rear axle — 3.55 ratio
<input checked="" type="radio"/>	—	17-in. painted cast-aluminum wheels
<input type="radio"/>	—	17-in. machined-aluminum wheels
—	<input checked="" type="radio"/>	18-in. chrome-clad aluminum wheels
<input checked="" type="radio"/>	—	P245/65R17 all-season OWL tires
—	<input checked="" type="radio"/>	P235/65R18 all-season OWL tires
<input type="radio"/>	<input checked="" type="radio"/>	Reverse Sensing System (not available with Adrenalin Package)
	<b>Seating</b>	
<input checked="" type="radio"/>	—	Cloth trim — Front bucket seats with 2-way adjustable head restraints; 6-way power driver seat with manual lumbar, and 4-way manual passenger seat
—	<input checked="" type="radio"/>	Leather trim — Heated front bucket seats and 10-way power driver seat, including power lumbar, and 4-way manual passenger seat with manual lumbar
	<b>Interior</b>	
<input checked="" type="radio"/>	—	Air conditioning — Manual
—	<input checked="" type="radio"/>	Air conditioning — Dual-zone Electronic Automatic Temperature Control
<input checked="" type="radio"/>	—	AM/FM stereo/single-CD player with MP3 capability
<input type="radio"/>	<input checked="" type="radio"/>	Ford SYNC® voice-activated, in-vehicle communications and entertainment system with 911 Assist™
—	<input type="radio"/>	Navigation System — Voice-activated, hard drive-based with single-CD/DVD/MP3 player
<input type="radio"/>	<input checked="" type="radio"/>	Power-adjustable pedals
<input type="radio"/>	<input checked="" type="radio"/>	Power moonroof with shade (includes mini-overhead console)
<input type="radio"/>	<input checked="" type="radio"/>	Premium Sound System with AM/FM stereo/6-disc in-dash CD changer, MP3 capability and 8-in. subwoofer
	<b>Exterior</b>	
<input checked="" type="radio"/>	—	Bumpers, sideview mirrors, door handles and wheel-lip mouldings — Black, moulded-in-colour
—	<input checked="" type="radio"/>	Bumpers, sideview mirrors, door handles and wheel-lip mouldings — Body-colour-painted
<input type="radio"/>	<input type="radio"/>	Cargo cage bed extender
<input checked="" type="radio"/>	—	Roof side rails — Black
—	<input checked="" type="radio"/>	Roof side rails — Chrome accents
<input type="radio"/>	<input checked="" type="radio"/>	Roof-rail crossbars — Black
<input checked="" type="radio"/>	—	Step bars — Black
—	<input checked="" type="radio"/>	Step bars — Chrome accents
<input type="radio"/>	<input checked="" type="radio"/>	Tonneau cover — Hard, locking
	<b>Packages</b>	
—	<input type="radio"/>	Adrenalin Package — Includes All-Wheel Drive (AWD); 20-in. polished-aluminum wheels with P255/50R20 all-season BSW tires; Black grille; unique front and rear fascias; unique fender vents; unique headlamps and fog lamps; unique running boards; single rear-exit exhaust with dual tip; Adrenalin tailgate badge; Dark Charcoal instrument panel, door inserts and console lid; Stone headliner; Dark Charcoal leather-trimmed heated front seats with perforated leather inserts and Adrenalin-branded floor mats (wheel-lip mouldings, step bars, roof rack and Reverse Sensing System are deleted)
<input type="radio"/>	<input type="radio"/>	Class III/IV Trailer Tow Package — Includes 7-pin trailer wiring harness and connector, and frame-mounted hitch receiver

☒ Standard   ☐ Optional   — Not Available

²AWD only available with Adrenalin Package.

# SPECIFICATIONS

## Model-Specific Features

### XLT

#### Select standard content:

17-in. painted cast-aluminum wheels with P245/65R17 all-season OWL tires • Black exterior accents • Automatic headlamps • Power sideview mirrors with security approach lamps • Black step bars • Black roof side rails • SecuriCode keyless-entry keypad • Power windows • AM/FM stereo/single-CD player with MP3 capability • SIRIUS Satellite Radio with 6-month prepaid subscription • Cloth front bucket seats with 6-way power driver seat and 2-way head restraints • Auto-dimming rearview mirror • Large overhead console • Moulded-rubber flooring • Heavy-duty berber floor mats • 2-line message centre • Cruise control

### Limited

#### Includes XLT content, plus:

18-in. chrome-clad aluminum wheels with P235/65R18 all-season OWL tires • Monochromatic exterior appearance • Chrome roof side rails (with black crossbars) and step bar accents • Hard tonneau cover • Premium Sound System with 6-disc in-dash CD changer • Leather-trimmed heated front bucket seats with 10-way power driver seat • Dual-zone Electronic Automatic Temperature Control • SYNC • 4-line message centre • Power-adjustable pedals • Power moonroof with mini-overhead console • Reverse Sensing System

## Trailer Towing Applications

Maximum Loaded Trailer Weight kg (lbs.)		
Axle Ratio	4.0L V6	
3.73	4x4 Class II	1588 (3500)
	4x4 Class III/IV	2309 (5090)
Axle Ratio	4.6L V8	
3.55	4x4 Class II	1588 (3500)
	4x4/AWD Class III/IV	3175 (7000)

Maximum weights shown are for properly equipped vehicles with required equipment and a 68-kg (150-lb.) driver. Weight of additional options, equipment, passengers and cargo must be deducted from this weight. For additional information, see your Ford of Canada Dealer.

Cargo and load capacity limited by weight and weight distribution.

## Engines

	Horsepower (hp @ rpm)	Torque (lb.-ft. @ rpm)
4.0L V6	210 @ 5100	254 @ 3700
4.6L V8	292 @ 5750	300 @ 3950

## Estimated Fuel Consumption Ratings<sup>1</sup>

L/100 km (mpg)

Engine	4x4 city/hwy.
4.0L V6	15.9/10.7 (18/26)
4.6L V8	15.5/10.4 (18/27)

<sup>1</sup>Fuel consumption ratings based on Transport Canada approved test methods.

## Dimensions & Ratings<sup>2</sup>

Exterior mm (in.)	
Overall length	5339 (210.2)
Wheelbase	3315 (130.5)
Overhang — Front	899 (35.4)
— Rear	1125 (44.3)
Width excluding mirrors	1872 (73.7)
including mirrors	2154 (84.8)
Height (with options)	1842 (72.5)
Minimum running ground clearance	216 (8.5)
Open tailgate to ground	785 (30.9)
Ramp breakover angle	17.2°
Angle of approach	28.7°
Angle of departure	17.2°
Interior mm (in.)	
Front	
Head room	1011 (39.8)
Shoulder room	1499 (59.0)
Hip room	1407 (55.4)
Leg room	1077 (42.4)
Rear	
Head room	978 (38.5)
Shoulder room	1496 (58.9)
Hip room	1410 (55.5)
Leg room	937 (36.9)
Cargo Volume L (cu. ft.)	
Behind front seats	1257 (44.4)
Cargo box	1062 (37.5)

<sup>2</sup>Dimensions may vary by trim level.

# WHEELS



17-in. Painted Cast-Aluminum  
Standard on XLT



17-in. Machined-Aluminum  
Optional on XLT



18-in. Chrome-Clad Aluminum  
Standard on Limited



20-in. Polished-Aluminum  
Included in Adrenalin Package



# ACCESSORIES

- A.** Dual INViSiON™ DVD Headrests<sup>1</sup>
- B.** Trailer Hitch Balls/Draw Bars
- C.** Wheel Locks
- D.** THULE® Racks, Carriers and Cargo Holders<sup>1</sup>
- E.** Splash Guards
- F.** Hood Deflector

**Also available:**

All-Weather Floor Mats

Ashcup/Coin Holder/Smoker's Pack

Electrochromic Mirrors

Garmin® Portable Navigation Systems<sup>1</sup>

Remote Start Systems

Side Window Deflectors

Vehicle Security System

Wiper Shaker De-Icer and Debris Cleaner<sup>1</sup>

<sup>1</sup>Ford Licensed Accessories.

Garmin is a registered trademark of Garmin Ltd.



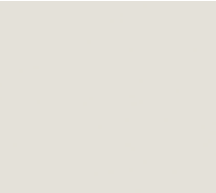
Ford of Canada warrants that its authorized Dealers will repair or replace any Genuine Ford Accessory that is properly installed by the authorized Dealer that sold the accessory and found to be defective in factory-supplied materials or workmanship. The accessory will be warranted for whichever provides you the greatest benefit: 12 months/20,000 km (whichever occurs first), or the remainder of your 36-month/60,000-km (whichever occurs first) Basic Coverage in the New Vehicle Limited Warranty. Contact your local Ford of Canada Dealer for details.

Ford Licensed Accessories (FLA) are warranted by the accessory manufacturer's limited warranty. The warranty coverage will vary by accessory manufacturer. Contact your local Ford of Canada Dealer for details regarding the accessory manufacturer's limited warranty and/or for a copy of the FLA product limited warranty offered by the accessory manufacturer.

Ford ESP PremiumCare Plan. Depending on the Ford ESP Plan you select, some Dealer-installed Genuine Ford Accessories can be covered up to 7 years or 150,000 km. See your Ford of Canada Dealer for details.

# COLOURS

## Exterior



White Suede



Colorado Red



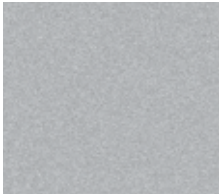
Sangria Red Metallic



Dark Copper Metallic



Blue Flame Metallic



Brilliant Silver Metallic



Black Pearl Slate Metallic



Black

Colours shown are representative only. Not all colours are available on all models.  
See your Ford of Canada Dealer for actual paint/trim options.

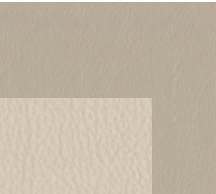
## Interior



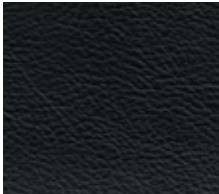
Camel Cloth with Sand Inserts  
Standard on XLT



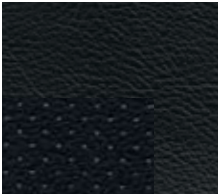
Dark Charcoal Cloth  
Standard on XLT



Camel Leather with Sand Inserts  
Standard on Limited



Dark Charcoal Leather  
Standard on Limited



Dark Charcoal Leather with Perforated Inserts  
Standard with Adrenalin Package

	Camel
	Dark Charcoal
	<b>XLT/Limited</b>
● ●	White Suede
● ●	Sangria Red Metallic
● ●	Dark Copper Metallic
● ●	Blue Flame Metallic
	● Brilliant Silver Metallic
● ●	Black Pearl Slate Metallic
● ●	Black
	<b>Adrenalin Package</b>
●	Colorado Red
●	Blue Flame Metallic
●	Brilliant Silver Metallic
●	Black



For more information on  
Ford of Canada products and services,  
please visit our website:



### Our commitment to you... Peace-of-Mind Protection

- Basic Coverage:  
3 years/60,000 km
- Powertrain Warranty:  
5 years/100,000 km
- Corrosion Warranty:  
5 years/unlimited distance
- Roadside Assistance:  
5 years/100,000 km

Certain conditions apply. For more information on  
these warranties and coverages, ask your local  
Ford of Canada Dealer or visit [ford.ca](http://ford.ca).

### For prompt, courteous answers to your questions:

Ford Customer Relationship Centre  
1-800-565-3673  
Ford Credit Customer Service Centre  
1-877-636-7346

Please note: The electronic version of the  
Ford of Canada vehicle brochure is a condensed  
version of the original printed version.

Competitive comparisons are based on 2009 competitive models,  
publicly available information and Ford data at the time of printing  
of the 2010 original printed version. Some features discussed may be  
optional. Vehicles shown may contain optional equipment. Features  
shown may be offered only in combination with other options or  
subject to additional ordering requirements or limitations. Dimensions  
shown may vary due to optional features and/or production variability.  
Following publication of the 2010 original printed brochure, certain  
changes in standard equipment, options and the like, or product delays  
may have occurred which would not be included in these pages. Your  
Ford of Canada Dealer is your best source for up-to-date information.  
Ford Motor Company of Canada, Limited, reserves the right to change  
product specifications at any time without incurring obligations. Colours  
may not be exactly as illustrated. Please see your sales consultant for  
specific colour and model availability. Please visit your local dealer or  
[ford.ca](http://ford.ca) for complete vehicle details.

#### FORD EXTENDED SERVICE PLAN

For a purchase or lease, the Ford Extended Service Plan (ESP) gives you  
"Peace-of-Mind" protection designed to cover key vehicle components  
and help protect you from the cost of unexpected repairs. To add to your  
peace of mind and help protect your investment beyond your New Vehicle  
Basic Warranty, complement your ESP with a prepaid maintenance plan  
that covers all required scheduled maintenance items for your vehicle and  
8 wear items. Ask your Dealer for a Ford ESP, the only service contract  
backed exclusively by Ford Motor Company of Canada, Limited, and  
honoured at all Ford and Ford Lincoln Dealerships across North America.  
Certain limitations and exclusions apply, see your Dealer for details.

#### FORD CREDIT

Get the ride you want. Whether you plan to lease or finance, you'll find  
the choices that are right for you at Ford Credit. Ask your local Ford of  
Canada Dealer for details or check us out at [fordcredit.ca](http://fordcredit.ca).



Escape & Escape Hybrid



Explorer



Sport Trac



Expedition & Expedition MAX