

2010 | F-150





# CLEARLY THE BEST IN SO MANY WAYS.



From design to manufacturing and every point in between, we work hard to ensure that the 2010 Ford F-150 defines tough. This generation of F-150 is the safest yet. It comes with standard Trailer Sway Control and big new brakes, so you'll feel confident and secure towing the heaviest loads. We've even added 2 new models for 2010: the FX2 and the Ford Harley-Davidson™ F-150.

## The 2010 Ford F-150

- **STRONGEST FRAME** in the class<sup>1</sup>
- **STANDARD** AdvanceTrac® with RSC® (Roll Stability Control™) and Safety Canopy® System
- **BEST-IN-CLASS** towing capability: 11,300 lbs. (5126 kg)<sup>1</sup>
- **BEST-IN-CLASS** payload capability: 3,030 lbs. (1374 kg)<sup>1</sup>
- **CLASS-EXCLUSIVE** flat loadfloor (SuperCab and SuperCrew)

We don't just call it Built Ford Tough® — we back it up.



<sup>1</sup>Class is Full-Size Pickups under 8500 lbs. (3855 kg) GVWR. Best-in-class payload and towing when properly equipped.

Vehicles throughout this catalogue may be shown with optional and aftermarket equipment. Items listed may be optional and/or require additional equipment. See Specifications section for feature availability.



# SERIOUS BACKBONE.

**Strongest Frame In The Class** is the backbone of F-150's class-leading capabilities. The fully boxed, ladder-style frame uses high-strength steel in its rails and crossmembers, and a reinforcement at key stress points.

**Tuned Shear-Style Body Mounts** help keep road vibration away from the vehicle body so you can enjoy a quiet, comfortable ride.

**Throughwelded, Fully Boxed Crossmembers** are optimized for strength and precisely positioned to create a flat loadfloor. Through-welding helps create a highly rigid structure, which mitigates frame flex and contributes to more stable towing.

**Coil-Over-Shock Front Suspension** includes control arm bushings for added lateral stiffness, yet the system delivers a smooth ride, crisp steering and excellent control.

**Hydroformed Frame Rails** allow extremely tight tolerances for manufacturing consistency and enhanced structural performance for safety.

**Twin-Tube Shocks** at all 4 corners help refine the ride and improve control in various road conditions. Rear shocks are mounted outside of the frame rails to reduce body lean and enhance rear axle control.

**Widest Rear Leaf Springs In The Class** are also 6-in. longer than on the previous generation F-150 for improved axle control, while balancing ride smoothness with best-in-class load capability.

**Upgraded Brake System** We tweaked the brake booster for better pedal feel, made the front rotors 6% larger, and revised the front calipers to support the big new rotors. We increased the master cylinder's piston/bore size by nearly 12%. And chose new Non-Asbestos Organic (NAO) linings that generate less dust.

We're helping meet your fuel efficiency needs in lots of ways. F-150's engine control systems actively reduce fuel burned during deceleration. Open-valve injection helps maximize combustion on 3-valve engines, which contributes to maximum power output and fuel efficiency. And idle speed is actively minimized under all conditions to help conserve fuel on 3-valve engines. We sweat the details so you don't have to.



## ALL-V8 LINEUP

The 4.6L 2-valve V8 engine starts the lineup with 248 hp and 294 lb.-ft. of torque. The 4.6L 3-valve V8 puts out 292 hp and 320 lb.-ft. of torque, while delivering up to 9.7L/100 km (29 mpg) hwy. and 14.3L/100 km (20 mpg) city.<sup>1</sup> At the top end, the 5.4L 3-valve V8 boasts 310 hp, 365 lb.-ft. of torque and Flex Fuel (FFV) capability. The available 6-speed automatic transmission features heavy-duty clutches, a beefy hydraulic pump, and a forged output shaft that certify it Built Ford Tough®.

<sup>1</sup>4x2 models. Fuel consumption ratings based on Transport Canada approved test methods. See Specifications section for complete fuel consumption information.



# SAFETY LEADER.

**Hydroformed Front Structures** are designed to help direct impact forces up and over the passenger cabin.

**High-Strength-Steel Roof Bows** are large and wide to help stiffen the cab structure.

**Ultra-High-Strength-Steel Roof Rails** start at the base of the A-pillars and are hydroformed to run up and over the doors in a single piece. Hydroforming increases the strength of the steel by 20%.

**High-Strength-Steel Rear Roof Structure** is fully boxed for increased strength.

**Head Restraints** help provide head and neck protection in certain types of collisions.

**Stamped-Steel Front Horns** are engineered to help manage crash forces.

**Passenger Safety Cage** (shown in red) was re-engineered and is manufactured with ultra-high-strength and high-strength steels to help create a structure that is 75% stronger, yet only 7% heavier than that of the previous generation F-150.

**Specially Designed Seats** help properly position passengers for safety belt and airbag effectiveness.

**Boron Steel-Reinforced B-Pillars** (SuperCrew only, not shown) use a spine formed from steel that is hot stamped to achieve a yield strength that is 3 times stronger for enhanced side-impact protection.

Every 2010 F-150 features more advanced standard crash avoidance technology and passenger protection systems than any pickup in its class. New for 2010, the available MyKey™ owner controls feature helps encourage smart driving habits, such as buckling up and travelling at appropriate speeds. It's an easy way to remind anyone about the rules of the road.



## 6 AIRBAGS STANDARD

The driver and right-front passenger get front-seat side "K" bags<sup>1</sup> (in yellow at left) in addition to the dual-stage front airbags<sup>1</sup> of the Personal Safety System™. In the event of certain side-impact collisions, the Safety Canopy® System's side-curtain airbags<sup>1</sup> with roll-fold technology can slide between the window glass and an outboard-seated occupant's head even if the person is leaning toward the glass.

<sup>1</sup>Always wear your safety belt and, in SuperCab and SuperCrew models, always secure children in the rear seat.



## ADVANCETRAC® WITH RSC® (ROLL STABILITY CONTROL™)

This system, another F-150 standard, is the only brake-based electronic stability control system to utilize a roll-rate sensor, monitoring the vehicle's motion at least 100 times per second. It automatically applies the brakes and modifies engine power to help keep all 4 wheels firmly planted.<sup>2</sup> When you're towing, standard Trailer Sway Control builds on this system.

<sup>2</sup>Remember that even advanced technology cannot overcome the laws of physics. It's always possible to lose control of a vehicle due to inappropriate driver input for the conditions.



# MASTER OF TOWING.

BEST-IN-CLASS TOWING  
**11,300 LBS<sup>1</sup>**  
(5126 KG) ACROSS ALL 3 CABS

<sup>1</sup>Maximum capability when properly equipped. See your Ford of Canada Dealer for specific equipment and other limitations.



F-150 XLT SuperCrew 4x4 in Tuxedo Black with XTR Package and other available equipment.

F-150 is the first and only truck to combine class-leading towing capability in every cab style with Trailer Sway Control stabilization technology and an optional integrated Trailer Brake Controller. Tow/Haul Mode on the available 6-speed automatic helps keep the engine in its optimum power range while cruising or climbing grades. Available telescoping trailer tow mirrors help improve visibility and reduce blind spots. It all adds up to towing confidence like you've never even imagined.

## TRAILER SWAY CONTROL

This standard system uses a yaw motion sensor in the AdvanceTrac® with RSC® (Roll Stability Control™) system to detect trailer sway through the motions of the truck. It then automatically corrects the motion by reducing engine torque and using selective wheel braking to help maintain control of both the truck and trailer.



## REAR VIEW CAMERA

This amazing option takes the full-colour image from a camera mounted in the tailgate and displays it in your auto-dimming rearview mirror or on the available Navigation System's screen (shown). Just shift into reverse for a wide-angle view behind the truck. The built-in distance guide is ideal for use during trailer hookups.



From lumber to pavers to huge tractor tires, F-150 handles cargo with ease thanks to best-in-class payload capability, best-in-class cargo box volume (up to 2299 L [81.2 cu. ft.]), and the best available access (optional steps on all 3 sides of the box). Year after year, Ford is the first to bring you practical new features for your work and life, making the most of F-150's class-leading capabilities.



### CARGO MANAGEMENT

When it's not in use, the optional Stowable Bed Extender folds conveniently out of the way, leaving you access to the entire cargo box. The optional Cargo Management System includes 2 dual-channel side rails and 4 of the strongest adjustable tie-down cleats available in the class. Optional Ford Custom Accessories also shown: Pickup Box Storage Bins; Cargo Management Accessory Package with its 2 load bars, bed divider and front header bar for additional cleat positions.

### BOX SIDE STEPS

Another class-exclusive F-150 option, each of these steps can handle up to 500 lbs. (227 kg), and there's one on each side of the box. They make it easy to reach your cargo — even gear that's deep in the box — and you can deploy or stow them with your foot.

### TAILGATE STEP

Take the hassle out of accessing the cargo box with this class-exclusive, ultra-convenient option. It stows right in the tailgate, so you just raise the grab bar and flip down the skid-resistant step and it's ready to use.

F-150 XLT SuperCab 4x4 in Red Candy with XTR Package and other available equipment.

# BUILT TO HANDLE ANY SITUATION.



BEST-IN-CLASS PAYLOAD  
**3030 LBS<sup>1</sup>**

(1374 KG)

<sup>1</sup>Maximum capability when properly equipped. See your Ford of Canada Dealer for specific equipment and other limitations.



# FUNCTIONALITY GOES HIGH TECH.

**SIRIUS**  
SATELLITE RADIO

**SYNC**  
Powered by **Microsoft**

It all starts with “Active Comfort” seats, contoured to comfortably support you. Inside SuperCrew, you’ll find up to 1631 L (57.6 cu. ft.) of cargo space, a one-touch flip-up rear seat, and the only completely flat loadfloor available in the class. Standard on most models, SIRIUS® Satellite Radio comes with a 6-month prepaid subscription. Surf up to 120 channels including 100% commercial-free music, plus the best sports, news, talk and entertainment, all across Canada.<sup>1</sup>



## NAVIGATION SYSTEM WITH SIRIUS

This optional system features easy voice activation, an 8-in. LCD touch screen, single-CD/DVD player with MP3, DVD-Audio and DVD-Video capabilities, a nearly 10-GB music jukebox and SIRIUS Satellite Radio.



## FORD SYNC® WITH 911 ASSIST™

The Ford SYNC voice-activated, in-vehicle communications and entertainment system controls your paired Bluetooth®-enabled mobile phone and most digital media players or thumb drives.<sup>2</sup> New 911 Assist can place a call directly to a 911 operator if any airbag has deployed.<sup>3</sup>

<sup>1</sup>See your Ford of Canada Dealer or contact SIRIUS at 1-888-539-7474 for more information.

<sup>2</sup>Driving while distracted can result in loss of vehicle control. Only use mobile phones and other devices, even with voice commands, when it is safe to do so. Microsoft is a registered trademark of Microsoft Corporation. The Bluetooth word mark is a trademark of the Bluetooth SIG, Inc.

<sup>3</sup>The vehicle's electrical system (including the battery), the wireless service provider's signal, and a connected mobile phone must all be available and operating for 911 Assist to function properly. These systems may become damaged in a crash. The paired mobile phone must be turned on, connected to SYNC, and the 911 Assist feature enabled in order for 911 to be dialed.



# CANADA'S WIDEST CHOICE OF PICKUPS **STARTS HERE.**



F-150 XL Regular Cab 4x4 in Dark Blue Pearl with available equipment.



## **XL**

The strongest frame, sturdy suspension and new, bigger brakes are ready to work. Standard power comes from the proven 4.6L 2-valve V8 engine mated to a 4-speed automatic transmission. AdvanceTrac® with RSC® (Roll Stability Control™), Trailer Sway Control and a smooth, quiet ride are also standard. The functional interior is equipped with durable vinyl-trimmed seating. For cloth-trimmed seating and chrome bumpers, there's the optional XL Décor Group. When properly equipped with the optional 5.4L 3-valve V8, Heavy-Duty Payload Package and Max. Trailer Tow Package, XL hauls up to 3030 lbs. (1374 kg) or tows up to 11,300 lbs. (5126 kg). That's best-in-class capability — on top of legendary F-150 durability.

# **SCENE STEALER.**



F-150 STX SuperCab 4x2 in Ingot Silver with available equipment.



## **STX**

This is tough that turns heads with its sleek, monochromatic exterior and unique 17-in. machined-aluminum wheels. "Active Comfort" cloth seats with driver lumbar adjustment make cruising easy. You can even listen to your own playlists thanks to the standard auxiliary audio input jack on the AM/FM stereo/single-CD player. The new MyKey™ owner controls feature helps encourage smart driving habits with programmable ignition keys. Available options include fog lamps, step bars and 18-in. wheels. Put it all together with STX.



# THIS ONE'S THE GO-TO GUY.



F-150 XLT SuperCab 4x2 in Oxford White/Ingot Silver Two-Tone with XTR Package, 20-in. chrome-clad aluminum wheels and other available equipment.



## **XLT**

Everyday versatility and hardworking value top the list of XLT's many virtues. Whether you need a Regular Cab, SuperCab or SuperCrew, XLT's got all the right answers. The chiseled exterior starts front and centre with the chrome grille, complemented by chrome bumpers and sturdy 17-in. machined-aluminum wheels. Use the remote keyless-entry system to activate the standard power door locks, and you're in. Power windows are also standard. "Active Comfort" seats trimmed in premium cloth welcome you along with colour-coordinated carpet and floor mats. You can adjust the tilt steering column to suit your driving style, and let cruise control help you out on longer drives. For best-in-class towing and hauling capability, go with the available 5.4L 3-valve V8 FFV, Heavy-Duty Payload Package and Max. Trailer Tow Package.

## **XTR PACKAGE**

Choose this option to add the eye-catching new chrome billet-style grille, 18-in. chrome-clad aluminum wheels (shown), chrome front tow hooks (4x4 only), 5-in. chrome tubular running boards and a chrome exhaust tip, plus fog lamps, a SecuriCode™ keyless-entry keypad, heated sideview mirrors and a leather-wrapped steering wheel. Available 20-in. chrome-clad aluminum wheels (above) add even more visual punch.





# RUGGED STYLE

## ON-ROAD AND OFF.



F-150 FX4 SuperCrew in Black with FX4 Luxury Package and other available equipment.



### FX2

A hot new truck for 4x2 fans, FX2 gets its energy from the 292-hp 4.6L 3-valve V8 engine. A Sterling Grey billet-style grille, 6-in. running boards, 18-in. wheels and a chrome exhaust tip set off the monochromatic exterior. Sharp details like the accent-colour headlamp and tail lamp surrounds really set FX2 apart. Inside, you'll find a dramatic Black interior with sport cloth front bucket seats and a leather-wrapped steering wheel. Optional 20-in. wheels really stand out on the street. Look for the new F-150 FX2 in Fall 2009.

### FX4

This F-150 is built to take you way out. Standard gear includes: the 5.4L 3-valve V8 FFV engine; 4x4 Electronic Shift-On-the-Fly (ESOF); off-road tuned shocks; a 3.73 electronic-locking rear differential axle; and skid plates to help protect the front crossmember, transfer case, and fuel tank. You'll negotiate tight trails and parking spots with ease thanks to the standard Reverse Sensing System. Rubber off-road floor mats are also included to help collect the dirt from your adventures. Fog lamps and 18-in. wheels enhance its rugged appeal, while the optional FX4 Luxury Package adds sport leather-trimmed seats and much more.





# TOUGH MEETS **LUXURY.**



F-150 LARIAT SuperCrew 4x4 in Red Candy with LARIAT Chrome Package and other available equipment.



## **LARIAT**

More than a truck, LARIAT is an experience. From the comfort of leather-trimmed seating to the ease of Ford SYNC,<sup>®</sup> the list of standard features goes on and on. For year-round comfort, simply adjust the heated and cooled front bucket seats to your liking. Once you've found the perfect position for the 10-way power driver seat, power-adjustable pedals and power, heated sideview mirrors, the memory function locks them in place. To help minimize your time out in the cold, there's a new defroster for the power-sliding rear privacy window. A substantial chrome 2-bar grille helps give LARIAT its unique style. For more chrome outside, add the optional LARIAT Chrome Package. Discover what tough luxury is all about — climb into F-150 LARIAT.



# SPIRIT OF THE WEST.



F-150 KING RANCH SuperCrew in Camel with Chaparral leather trim and available equipment.



## KING RANCH®

The famed "Running W" brand marks the fact that this F-150 is crafted with exceptional materials, inside and out. The Chaparral leather-trimmed interior includes 10-way power, heated and cooled front bucket seats, plus a heated rear seat. Those who tow will really appreciate how the Rear View Camera helps you line up to a trailer hitch. Distinctive exterior touches include two-tone paint with Pueblo Gold accents, exclusive KING RANCH badging and 18-in. wheels. Finely appointed and ready for work? You better believe it. KING RANCH is Built Ford Tough® through and through.





# BEST OF THE BEST.



F-150 PLATINUM SuperCrew 4x4 in Ingot Silver with available equipment.



## PLATINUM

First class. From its intricate satin-finish grille to its distinctive satin-finish tailgate panel, PLATINUM exudes a calm, cool and collected style. The luxurious leather-trimmed interior includes unique tuxedo stripe detailing on the 10-way, power-adjustable, heated and cooled front bucket seats and on the heated 60/40 split one-touch fold-up rear bench. The leather-wrapped steering wheel features a real wood insert and power tilt column. A special laminated windshield and additional sound insulation in the firewall help quiet road and wind noise to near silence, while the rain-sensing windshield wipers automatically clear your view. Open a door, and the power-deployable running boards automatically extend, providing easy entry and exit for everyone. Clearly, life in F-150 PLATINUM is a step above.



# 4 DOORS.

UNLIMITED ATTITUDE.



Ford Harley-Davidson™ F-150 SuperCrew in Lava with available equipment.



## FORD HARLEY-DAVIDSON™ F-150

A new way to ride. The limited-edition 2010 Ford Harley-Davidson™ F-150 is available in Tuxedo Black Metallic or exclusive Lava Metallic. The 5.4L 3-valve V8 FFV, sport-tuned shock absorbers and a 3.73 limited-slip rear axle are all standard. All-Wheel Drive (AWD) is optional. Making your allegiance known is easy: "Harley-Davidson F-150" badges, a chrome billet-style grille, dynamic bodyside graphics, "Harley-Davidson" dimensional lettering and 22-in. wheels. Inside: Lava and Black leather trim with chrome cloisonné HARLEY-DAVIDSON Bar & Shield logo seat medallions, a heated 60/40 split one-touch fold-up rear bench seat, and a limited-edition cloisonné serial plate on the front centre console. The legend returns.





# ACCESSORIES

- A.** Dual INViSiON™ DVD Headrests¹
- B.** Trailer Tow Mirrors
- C.** Cargo Storage Bin
- D.** Hood Deflector
- E.** Keyless Entry Keypad
- F.** Hard Folding Tonneau Cover¹
- G.** THULE® Racks, Carriers and Cargo Holders¹
- H.** Chrome Exhaust Tip
- I.** Garmin® Portable Navigation Systems¹
- J.** Hard Colour-Matched Tonneau Cover¹
- K.** Bedliner
- L.** 6-in. Chrome Step Bar
- M.** Interior Cargo Storage Bin
- N.** Soft Folding Tonneau Cover¹
- O.** Remote Start Systems

## TOWING ACCESSORIES

- Trailer Hitch Assembly — 2-in. Receiver
- Trailer Hitch Balls/ Draw Bars
- Wiring Harness Kit

## EXTERIOR ACCESSORIES

- Power Sliding Rear Window
- Manual Sliding Rear Window
- Moonroof Deflector
- Side Window Deflectors
- Step Bar
- Splash Guards
- Wiper Shaker De-Icer and Debris Cleaner¹
- Wheel Locks
- Locking Fuel Plug

## INTERIOR ACCESSORIES/ELECTRONICS

- Interior Lighting Kit
- Electrochromic Mirror with Compass, Outside Temperature and HomeLink®
- Vehicle Security System
- Cargo Organizers
  - Soft-Sided
  - Soft-Sided Cooler
  - Hard-Sided
- Cargo Area Protector
- All-Weather Floor Mats
- Ashcup/Coin Holder/ Smoker's Pack

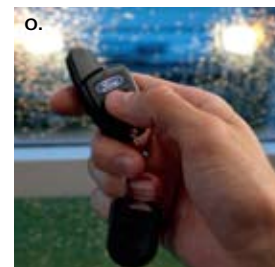
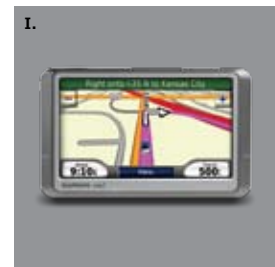
¹Ford Licensed Accessories.  
Garmin is a registered trademark of Garmin Ltd.



Ford of Canada warrants that its authorized Dealers will repair or replace any Genuine Ford Accessory that is properly installed by the authorized Dealer that sold the accessory and found to be defective in factory-supplied materials or workmanship. The accessory will be warranted for whichever provides you the greatest benefit: 12 months/20,000 km (whichever occurs first), or the remainder of your 36-month/60,000-km (whichever occurs first) Basic Coverage in the New Vehicle Limited Warranty. Contact your local Ford of Canada Dealer for details.

Ford Licensed Accessories (FLA) are warranted by the accessory manufacturer's limited warranty. The warranty coverage will vary by accessory manufacturer. Ford Licensed Accessories are fully designed and developed by the accessory manufacturer and have not been designed or tested to Ford engineering requirements. Contact your local Ford of Canada Dealer for details regarding the accessory manufacturer's limited warranty and/or for a copy of the FLA product limited warranty offered by the accessory manufacturer.

Ford ESP PremiumCare Plan. Depending on the Ford ESP Plan you select, some Dealer-installed Genuine Ford Accessories can be covered up to 7 years or 150,000 km. See your Ford of Canada Dealer for details.





"SIRIUS," the SIRIUS dog logo, channel names and logos are trademarks of SIRIUS XM Radio Inc. Subscriptions governed by SIRIUS Terms and Conditions at [siriuscanada.ca](http://siriuscanada.ca).



# SPECIFICATIONS

## Features & Options

					XL
					STX
					XLT
					FX4
					LARIAT
					<b>Interior</b> Continued
—	—	—	●	○	Navigation System with 8-in. in-dash screen and Sony single-CD/DVD player with MP3 capability, DVD-Audio, DVD-Video capability, internal hard disk drive for map and POI storage, and 10-GB music jukebox; includes subwoofer, speed-compensated volume control, steering wheel-mounted audio and Navigation System controls, and auto-dimming rearview mirror with microphone (FX4 requires FX4 Luxury Package)
○	○	○	○	●	Ford SYNC® — Includes steering wheel-mounted audio/SYNC controls and auto-dimming rearview mirror with microphone (requires cruise control and audio system with CD)
●	●	○	—	—	Black vinyl floor covering
○	○	●	—	●	Carpet — Colour-coordinated with carpeted front and rear floor mats
—	—	—	●	—	Carpet — Colour-coordinated with black rubber off-road front and rear floor mats
○	○	○	—	●	Floor mat — Full-coverage rubber (XL and STX require carpet)
○	●	●	●	●	MyKey™ owner controls feature (XL requires CD radio)
○	○	●	●	●	Cruise control — Steering wheel-mounted
—	—	●	●	●	Overhead console with 2 storage bins and map lights
—	○	○	○	●	Power-adjustable pedals (includes memory on LARIAT)
—	—	○	○	○	Power moonroof — Includes one-touch-open/-close and overhead console with single storage bin (SuperCab and SuperCrew only)
—	—	●	●	●	Power point — Rear (SuperCab and SuperCrew only)
○	○	○	—	—	Rear window — Manual sliding with privacy glass (not available with defroster)
○	○	○	●	—	Rear window — Fixed with privacy glass and defroster
—	—	○	○	●	Rear window — Power sliding with privacy glass and defroster (requires power driver seat on XLT SuperCab and SuperCrew)
					<b>Exterior</b>
○	—	○	—	—	8-ft. box — Styleside (Regular Cab) 145-in. WB
●	—	●	—	—	8-ft. box — Styleside (SuperCab with Heavy-Duty Payload Package) 163-in. WB
○	—	○	—	—	6.5-ft. box — Styleside (Regular Cab) 126-in. WB
○	○	○	○	○	6.5-ft. box — Styleside (SuperCab) 145-in. WB
—	—	○	○	○	6.5-ft. box — Styleside (SuperCrew) 157-in. WB
—	—	○	○	○	5.5-ft. box — Styleside (SuperCrew) 145-in. WB
○	○	○	○	○	Box Side Steps (6.5-ft. or 8-ft. box)
○	○	○	○	○	Cargo Management System — Includes 2 dual-channel tracks and 4 adjustable tie-down cleats (6.5-ft. box only)
○	○	●	●	●	Fog lamps (XL requires XL Décor Group; standard with XTR Package)
○	○	○	○	○	Integrated Trailer Brake Controller¹ (requires Trailer Tow or Max. Trailer Tow Package; XLT requires fog lamps; XL with XL Décor Group requires fog lamps)
—	—	○	○	●	Rear View Camera — Includes camera mounted in tailgate (included with KING RANCH® and PLATINUM Packages)
—	—	●	●	●	Remote keyless-entry system — Includes 2 key fobs, illuminated entry and panic button

					XL
					STX
					XLT
					FX4
					LARIAT
					<b>Exterior</b> Continued
—	—	○	●	●	Reverse Sensing System (requires Trailer Tow or Max. Trailer Tow Package)
—	—	⦿	—	—	Running boards — Black platform (XLT SuperCab and SuperCrew only)
—	—	⦿	—	—	Running boards — 4-in. polished stainless steel tubular (Regular Cab only)
—	○	⦿	○	○	Running boards — 5-in. chrome tubular step bars (SuperCab and SuperCrew only)
—	—	○	●	●	SecuriCode™ keyless-entry keypad — Driver door-mounted
○	—	—	—	—	Sideview mirrors — Manual glass/manual telescoping trailer tow
—	—	⦿	●	—	Sideview mirrors — Black, power, heated with turn-signal indicators and auto-dimming driver-side feature (included with XTR Package)
—	—	—	⦿	●	Sideview mirrors — Body-colour, power, heated with memory, turn-signal indicators and auto-dimming driver-side feature (included with FX4 Luxury Package)
⦿	—	○	○	—	Sideview mirrors — Power glass/manual telescoping trailer tow with heat, turn-signal indicators and security approach lamps (XL Fleet only)
—	—	—	○	○	Sideview mirrors — Body-colour, power glass/manual telescoping trailer tow with heat, turn-signal indicators, security approach lamps and memory (FX4 requires FX4 Luxury Package; not available with KING RANCH or PLATINUM Package)
—	—	—	—	⦿	Sideview mirrors — Chrome-capped, power glass/manual telescoping trailer tow with heat, turn-signal indicators, security approach lamps and memory (requires LARIAT Chrome, KING RANCH or PLATINUM Package)
○	○	○	○	○	Stowable bed extender
○	○	○	○	○	Tailgate Step (included with PLATINUM Package)
—	—	○	○	⦿	Two-tone paint (included with KING RANCH Package; not available with HARLEY-DAVIDSON or PLATINUM Package)
					<b>Packages</b>
—	—	⦿	—	—	FX2 SPORT Package — Includes Sterling Grey grille insert with body-colour surround; body-colour bumpers and front lower valence; accent-colour 6-in. angular step bars; chrome exhaust tip; accent-colour headlamps and tail lamps; fog lamps; FX2 fender badges and box decals; 18-in. machined-aluminum wheels with painted accents; Black leather-wrapped steering wheel; Ebony interior accents; FX instrument panel and cluster; SPORT cloth front bucket seats with flow-through console and 6-way power driver seat; auto-dimming rearview mirror (4x2 SuperCab and SuperCrew only; late availability)
—	—	—	⦿	—	FX4 Luxury Package — Includes Dual-zone Electronic Automatic Temperature Control; steering wheel with secondary audio controls; FX4 sport leather-trimmed 10-way power front bucket seats; heated front seats; memory driver seat; power-adjustable pedals with memory; heated sideview mirrors with memory and body-colour caps; body-colour door handles with keyless-entry keypad; auto-dimming rearview mirror with microphone and SYNC; power-sliding rear window with privacy glass and defroster (SuperCab and SuperCrew only)

					XL
					STX
					XLT
					FX4
					LARIAT
Packages Continued					
—	—	—	—	●	HARLEY-DAVIDSON Package — See Model-Specific Features for more information
●	—	●	—	—	Heavy-Duty Payload Package — Increases GVWR to 3719 kg (8200 lbs.) for improved payload and towing; LT245/75R17E all-terrain BSW tires; 17-in. 7-lug Silver-painted steel wheels; heavy-duty shock absorbers and frame; upgraded springs and radiator; auxiliary transmission cooler; rear axle with 9.75-in. gear set and 3.73 gear ratio (Regular Cab and SuperCab with 5.4L V8 only)
—	—	—	—	○	KING RANCH Package — See Model-Specific Features for more information
—	—	—	—	○	LARIAT Chrome Package — Includes 18-in. chrome-clad aluminum wheels; 6-in. chrome angular step bars; chrome exhaust tip; chrome front tow hooks (4x4); chrome-capped, power, heated sideview mirrors with turn-signal indicators and auto-dimming driver-side feature; and chrome door handles
●	—	●	●	●	Max. Trailer Tow Package (required for towing over 2268 kg [5000 lbs.]) — Includes Trailer Brake Controller; Class IV trailer hitch receiver; 7-pin wiring harness; upgraded radiator; auxiliary transmission cooler; upgraded rear bumper; upgraded rear springs; heavy-duty front eye bushing (restrictions apply; see dealer for details)
●	—	●	—	—	MidBox Prep Package — Includes 145-in. WB Regular Cab with 5.5-ft. box or 163-in. WB SuperCab with 5.5-ft. box; via ship-thru process, truck is upfitted with MidBox between cab and pickup box
—	—	—	—	○	PLATINUM Package — See Model-Specific Features for more information
●	—	●	—	—	Snow Plow Prep Package — Available with 4x4 only (requires Heavy-Duty Payload Package) and includes upgraded springs (Regular Cab and SuperCab only) (restrictions apply; see dealer for details)
○	○	○	●	●	Trailer Tow Package (required for towing over 2268 kg [5000 lbs.]) — Includes Class IV trailer hitch receiver, 7-pin wiring harness, upgraded radiator, and auxiliary transmission cooler
—	—	○	—	—	Tow & Go Package — Includes 5.4L engine, Trailer Tow Package and limited-slip rear axle
○	—	—	—	—	XL Décor Group — Includes chrome front and rear bumpers, and cloth 40/20/40 split front seats
—	—	●	—	—	XTR Package — Includes chrome front tow hooks (4x4 only); 18-in. chrome-clad aluminum wheels; P265/60R18 all-season OWL tires (4x2); P275/65R18 all-terrain OWL tires (4x4); power, heated sideview mirrors with turn-signal indicators and auto-dimming driver-side feature; chrome door handles with Black bezels; 5-in. chrome tubular running boards; chrome exhaust tip; colour-coordinated leather-wrapped steering wheel; SecuriCode keyless-entry keypad; fog lamps; chrome billet-style grille; and unique decals (SuperCab and SuperCrew only)

● Standard   ● Select Availability   ○ Optional   — Not Available  
¹TBC verified to be compatible with electrically actuated drum brakes only.



# SPECIFICATIONS

## Dimensions

	Regular Cab		SuperCab		SuperCrew	
	4x2	4x4	4x2	4x4	4x2	4x4
Exterior mm (in.)						
Overall Height						
5.5-ft. box	—	—	—	—	1887 (74.3)	1935 (76.2)
6.5-ft. box	1895 (74.6)	1930 (76.0)	1816 (71.5)	1928 (75.9)	1887 (74.3)	1941 (76.4)
8-ft. box	1935 (76.2)	1925 (75.8)	1928 (75.9)	1948 (76.7)	—	—
Overall width						
Excluding mirrors	2004 (78.9)	2004 (78.9)	—	—	2004 (78.9)	2004 (78.9)
Including mirrors	2464 (97.0)	2464 (97.0)	2464 (97.0)	2464 (97.0)	2464 (97.0)	2464 (97.0)
Mirrors folded	2123 (83.6)	2123 (83.6)	2123 (83.6)	2123 (83.6)	2123 (83.6)	2123 (83.6)
Overall length						
5.5-ft. box	—	—	—	—	5885 (231.7)	5885 (231.7)
6.5-ft. box	5413 (213.1)	5413 (213.1)	5885 (231.7)	5885 (231.7)	6190 (243.7)	6190 (243.7)
8-ft. box	5885 (231.7)	5885 (231.7)	6358 (250.3)	6358 (250.3)	—	—
Overhang — front	978 (38.5)	978 (38.5)	978 (38.5)	978 (38.5)	978 (38.5)	978 (38.5)
Wheelbase						
5.5-ft. box	—	—	—	—	3668 (144.4)	3668 (144.4)
6.5-ft. box	3195 (125.8)	3195 (125.8)	3670 (144.5)	3670 (144.5)	3978 (156.6)	3975 (156.5)
8-ft. box	3670 (144.5)	3670 (144.5)	4145 (163.2)	4145 (163.2)	—	—
Overhang — rear	1240 (48.8)	1240 (48.8)	1240 (48.8)	1240 (48.8)	1240 (48.8)	1240 (48.8)
Angle of approach						
5.5-ft. box	—	—	—	—	21.2°	25.0°
6.5-ft. box	22.2°	24.3°	21.1°	23.7°	22.4°	25.5°
8-ft. box	24.2°	23.4°	25.5°	25.2°	—	—
Ramp breakover angle						
5.5-ft. box	—	—	—	—	15.2°	18.6°
6.5-ft. box	17.7°	19.9°	15.7°	18.0°	14.5°	18.6°
8-ft. box	19.3°	18.3°	17.3°	18.7°	—	—
Angle of departure						
5.5-ft. box	—	—	—	—	17.7°	20.4°
6.5-ft. box	18.8°	21.0°	18.8°	20.7°	18.1°	20.7°
8-ft. box	21.9°	21.6°	21.1°	22.1°	—	—
Ground clearance						
5.5-ft. box	—	—	—	—	198 (7.8)	229 (9.0)
6.5-ft. box	218 (8.6)	224 (8.8)	208 (8.2)	221 (8.7)	211 (8.3)	251 (9.9)
8-ft. box	251 (9.9)	224 (8.8)	239 (9.4)	254 (10.0)	—	—
Loadfloor height						
5.5-ft. box	—	—	—	—	818 (32.2)	869 (34.2)
6.5-ft. box	838 (33.0)	884 (34.8)	843 (33.2)	879 (34.6)	823 (32.4)	879 (34.6)
8-ft. box	907 (35.7)	899 (35.4)	886 (34.9)	907 (35.7)	—	—
Cab length	3211 (126.4)	3211 (126.4)	3683 (145.0)	3683 (145.0)	3980 (156.7)	3980 (156.7)

	Regular Cab	SuperCab	SuperCrew
Interior mm (in.)			
1st row			
Head room	1041 (41.0)	1041 (41.0)	1041 (41.0)
Shoulder room	1692 (66.6)	1692 (66.6)	1674 (65.9)
Hip room	1537 (60.5)	1537 (60.5)	1537 (60.5)
Leg room	1052 (41.4)	1052 (41.4)	1052 (41.4)
2nd row			
Head room	—	1008 (39.7)	1024 (40.3)
Shoulder room	—	1697 (66.8)	1674 (65.6)
Hip room	—	1692 (66.6)	1641 (64.6)
Leg room	—	848 (33.4)	1105 (43.5)
Cargo volume L (cu. ft.)			
Behind 1st row	487 (17.2)	1269 (44.8)	1631 (57.6)

	5.5-ft.	6.5-ft.	8-ft.
Cargo Area			
Volume L (cu. ft.)	1572 (55.5)	1855 (65.5)	2299 (81.2)
Inside height mm (in.)	569 (22.4)	569 (22.4)	569 (22.4)
Length at floor mm (in.)	1702 (67.0)	2002 (78.8)	2474 (97.4)
Width at wheelhouse mm (in.)	1270 (50.0)	1270 (50.0)	1270 (50.0)
Max. width at floor mm (in.)	1656 (65.2)	1656 (65.2)	1656 (65.2)

## Payload

Wheelbase	Engine	Max. Payload kg (lbs.)	GVWR kg (lbs.)
Regular Cab 4x2			
126-in.	4.6L 2-valve	757 (1670)	2926 (6450)
145-in.	4.6L 2-valve	848 (1870)	3062 (6750)
	4.6L 3-valve	866 (1910)	3107 (6850)
	5.4L 3-valve	921 (2030)	3198 (7050)
	5.4L 3-valve	1374 (3030) <sup>1</sup>	3719 (8200)
SuperCab 4x2			
145-in.	4.6L 2-valve	726 (1600)	3039 (6700)
	4.6L 3-valve	744 (1640)	3084 (6800)
	5.4L 3-valve	930 (2050) <sup>2</sup>	3402 (7500)
163-in.	5.4L 3-valve	1193 (2630) <sup>1</sup>	3719 (8200)
SuperCrew 4x2			
145-in.	4.6L 2-valve	730 (1610)	3084 (6800)
	4.6L 3-valve	762 (1680)	3130 (6900)
	5.4L 3-valve	857 (1890)	3334 (7350)
157-in.	4.6L 2-valve	667 (1470)	3084 (6800)
	4.6L 3-valve	699 (1540)	3130 (6900)
	5.4L 3-valve	912 (2010) <sup>2</sup>	3425 (7550)
Regular Cab 4x4			
126-in.	4.6L 2-valve	744 (1640)	3016 (6650)
	4.6L 3-valve	767 (1690)	3062 (6750)
	5.4L 3-valve	753 (1660)	3084 (6800)
145-in.	4.6L 2-valve	826 (1820)	3152 (6950)
	4.6L 3-valve	848 (1870)	3198 (7050)
	5.4L 3-valve	875 (1930)	3266 (7200)
	5.4L 3-valve	1234 (2720) <sup>1</sup>	3719 (8200)
SuperCab 4x4			
145-in.	4.6L 2-valve	671 (1480)	3130 (6900)
	4.6L 3-valve	703 (1550)	3175 (7000)
	5.4L 3-valve	898 (1980) <sup>2</sup>	3493 (7700)
163-in.	5.4L 3-valve	1057 (2330) <sup>1</sup>	3719 (8200)
SuperCrew 4x4			
145-in.	4.6L 3-valve	635 (1400)	3175 (7000)
	5.4L 3-valve	875 (1930) <sup>2</sup>	3481 (7675)
157-in.	4.6L 3-valve	649 (1430)	3243 (7150)
	5.4L 3-valve	835 (1840) <sup>2</sup>	3493 (7700)

**Note:** Load rating represents maximum allowable weight of people and cargo, and is reduced by the weight of optional equipment.

<sup>1</sup>Requires Heavy-Duty Payload Package.

<sup>2</sup>Requires Max. Trailer Tow Package.



# SPECIFICATIONS

## Towing

Engine	Axle Ratio	GCWR Range kg (lbs.)	Regular Cab 4x2		Regular Cab 4x4		SuperCab 4x2		SuperCab 4x4		SuperCrew 4x2		SuperCrew 4x4	
			126-in. WB	145-in. WB	126-in. WB	145-in. WB	145-in. WB	163-in. WB	145-in. WB	163-in. WB	145-in. WB	157-in. WB	145-in. WB	157-in. WB
4.6L 2-Valve V8	3.55	4717-4808 (10,400-10,600)	2449 (5400)	2495 (5500)			2404 (5300)				2359 (5200)	2313 (5100)		
	3.73	4944-5035 (10,900-11,100)	2676 (5900)	2722 (6000)	2585 (5700)	2631 (5800)	2631 (5800)		2495 (5500)		2585 (5700)	2540 (5600)		
4.6L 3-Valve V8	3.15	6169 (13,600)									3402 <sup>2</sup> (7500)			
	3.31	5897-6123 (13,000-13,500)		3629 (8000)			3674 (8100)				3674 (8100)	3629 (8000)		
	3.55	5851-6759 (12,900-14,900)		3810 (8400)	3493 (7700)	3493 (7700)	4309 (9500)		3583 (7900)		4264 (9400)	4218 (9300)	3493 (7700)	3447 (7600)
	3.73	6033-6849 (13,300-15,100)			3629 (8000)	3719 (8200)			4264 (9400)				4218 (9300)	4173 (9200)
5.4L 3-Valve V8	3.15	5987-6350 (13,200-14,000)		3629 (8000)			3901 (8600)				3856 (8500)	3810 (8400)		
	3.31	5987-6350 (13,200-14,000)			3493 (7700)	3493 (7700)			3764 (8300)				3674 (8100)	3629 (8000)
	3.55	6305-7031 (13,900-15,500)		4037 (8900)	3901 (8600)	4309 (9500)	4445 (9800)		4400 (9700)		4445 (9800)	4400 (9700)	4354 (9600)	4309 (9500)
	3.73	6305-6985 (13,900-15,400)			3901 (8600)	4309 (9500)			4400 (9700)				4400 (9700)	4309 (9500)
		7575-7756 (16,700-17,100)		5126 <sup>1</sup> (11,300)		5126 <sup>1</sup> (11,300)	5126 <sup>2</sup> (11,300)	5126 <sup>1</sup> (11,300)	5080 <sup>2</sup> (11,200)	5035 <sup>1</sup> (11,100)	5126 <sup>2</sup> (11,300)	5126 <sup>2</sup> (11,300)	5080 <sup>2</sup> (11,200)	5035 <sup>2</sup> (11,100)

<sup>1</sup>Requires Heavy-Duty Payload Package. <sup>2</sup>Requires Max. Trailer Tow Package.

**Conventional Towing Notes:** Maximum loaded trailer weights shown. Trailer tongue load weight should be 10-15% of total loaded trailer weight. Make sure that the vehicle payload (reduced by option weight) will accommodate trailer tongue load weight and the weight of passengers and cargo added to the towing vehicle. The addition of trailer tongue load weight, and the weight of passengers and cargo, cannot cause vehicle weights to exceed the rear GAWR (Gross Axle Weight Rating) or GVWR (Gross Vehicle Weight Rating). These ratings can be found on the vehicle Safety Compliance Certification Label.

**Note:** See RV and Trailer Towing Guide for requirements, restrictions and 5th-wheel towing.  
See your Ford of Canada Dealer for more information.

## Engines

Engine	Transmission	Horsepower	Torque	Estimated Fuel Consumption Ratings L/100 km³ (mpg)			
				4x2		4x4	
				City	Highway	City	Highway
4.6L 2-Valve V8	4-speed auto. O/D	248 @ 4750	294 @ 4000	14.4 (20)	10.3 (27)	15.0 (19)	11.0 (26)
4.6L 3-Valve V8	6-speed auto. O/D	292 @ 5700	320 @ 4000	14.3 (20)	9.7 (29)	14.9 (19)	10.2 (28)
5.4L 3-Valve V8 (gas)	6-speed auto. O/D	310 @ 5000	365 @ 3500	14.9 (19)	10.2 (28)	15.6 (18)	11.2 (25)

<sup>3</sup>Actual mileage may vary with driving habits. Fuel consumption ratings based on Transport Canada approved test methods.



# SPECIFICATIONS

## Model-Specific Features

Each series includes the standard equipment of the previous series, except where additions/exceptions are noted. Images shown may contain optional equipment.

### XL

Sterling Silver-painted front and rear step bumpers • Black bar-style grille with Black grille surround • Black moulded-in-colour front bumper upper fascia • Black manual sideview mirrors • 17-in. Silver-painted styled-steel wheels • Solar-tinted glass with fixed rear window • Air conditioning • AM/FM stereo with clock • Visors with driver-side strap and passenger-side mirror • Urethane steering wheel • Manual windows with fixed 2nd-row on SuperCab • Tachometer • Black vinyl floor covering • Cloth 40/20/40 split front seat • Tire Pressure Monitoring System (excludes spare) • Display centre • Cloth 60/40 split flip-up rear seat (SuperCab) • Electronic Shift-On-the-Fly (ESOF) transfer case (4x4 only) • Rear cupholders (SuperCab and SuperCrew)



### STX

Body-colour front and rear step bumpers, grille surround and front bumper upper fascia • 17-in. machined-aluminum wheels • AM/FM stereo/single-CD player with MP3 capability and speed-compensated volume control • Auxiliary audio input jack • SIRIUS Satellite Radio with 6-month prepaid subscription • MyKey™ owner controls feature



### XLT

Chrome front and rear step bumpers • Chrome bar-style grille with chrome surround • Remote keyless-entry system • Power sideview mirrors • 17-in. painted machined-aluminum wheels • Autolamp • Power accessory delay • Colour-coordinated carpet and floor mats • Cruise control • Colour-coordinated steering wheel • Visors with covered mirrors • Power windows, including 2nd-row on SuperCab and SuperCrew • Fixed rear window with privacy glass • Power door locks • Outside temperature and compass display • Premium cloth 40/20/40 split front seat with manual driver lumbar • Premium cloth rear 60/40 split flip-up seat (SuperCab and SuperCrew) • Fade-to-off interior lighting



### FX4

Colour-coordinated front and rear step bumpers • Black bar-style grille with body-colour surround • Sterling Grey wheel-lip mouldings • Fog lamps • SecuriCode™ keyless-entry keypad • 18-in. machined cast-aluminum wheels • Electronic-locking rear axle • Off-road tuned shocks • Skid plates — 2 steel (front crossmember and transfer case), 1 composite (fuel tank) • Black leather-wrapped steering wheel • Black rubber off-road floor mats • Sport cloth front bucket seats with driver manual lumbar • 6-way power driver seat • Flow-through centre console with floor shifter • Reverse Sensing System • Trailer Tow Package • Rear-window defroster



### LARIAT

Chrome front/rear step bumpers and colour-coordinated wheel-lip mouldings (with monotone paint) • Pueblo Gold front/rear step bumpers and wheel-lip mouldings (with two-tone paint) • Chrome 2-bar grille insert with Silver-painted mesh insert • Power, heated sideview mirrors with turn-signal indicators and auto-dimming driver-side feature • 18-in. 7-spoke bright-aluminum wheels • Heavy-duty shock absorbers • Illuminated, covered visor vanity mirrors • Dual-zone Electronic Automatic Temperature Control • AM/FM stereo/6-disc in-dash CD changer • Ford SYNC® • Colour-coordinated carpeted floor mats • Message centre • Colour-coordinated, leather-wrapped steering wheel with secondary audio and climate controls • Leather-trimmed, 10-way power, heated and cooled front bucket seats with driver-side memory • Auto-dimming rearview mirror • Universal Garage Door Opener • Power-adjustable pedals with memory



## Packages

### FORD HARLEY-DAVIDSON™ F-150

Chrome billet-style grille • Body-colour front/rear bumpers, front fascia and lower valance • Dynamic bodyside graphics with “Harley-Davidson” dimensional lettering • Blacked-out headlamps and tail lamps • Stylized power-deployable running boards • Rear View Camera • Reverse Sensing System • 22-in. polished forged-aluminum wheels with Lava-painted accents and the Bar & Shield logo • Lava and Black leather-wrapped steering wheel • Sony® AM/FM stereo/6-disc in-dash CD changer • Cloisonné serialization plate with HARLEY-DAVIDSON Bar & Shield logo badge on front centre console lid • Lava and Black leather-trimmed seating with chrome cloisonné HARLEY-DAVIDSON Bar & Shield logo seat medallions • Heated 60/40 split one-touch fold-up rear seat • Ambient Lighting • Power-adjustable performance pedals • “Harley-Davidson” lettering on scuff plates (available as 4x2 or All-Wheel Drive [AWD])

### KING RANCH®

2-bar grille with chrome surround and colour-coordinated mesh insert • Two-tone paint with Pueblo Gold lower accent colour; Pueblo Gold front/rear bumpers and wheel-lip mouldings • Power-folding, heated, chrome-capped sideview mirrors with memory, integrated turn-signal indicators, security approach lamps and auto-dimming driver-side feature • 18-in. 7-spoke aluminum wheels with KING RANCH logo wheel ornaments • Colour-coordinated box rail and tailgate mouldings, and platform running boards • Chaparral leather-wrapped steering wheel • Woodgrain-style trim • Chaparral leather-trimmed, 10-way power, heated and cooled front bucket seats • Front flow-through console with Chaparral leather-trimmed lid and floor shifter • Chaparral leather-trimmed heated 60/40 split fold-up rear bench with folding armrest • Unique KING RANCH badges and floor mats • Reverse Sensing System • Rear View Camera • Sony AM/FM stereo/6-disc in-dash CD changer with MP3 capability and speed-compensated volume control

### PLATINUM

Satin-finish grille surround with chrome mesh insert • Body-colour front/rear bumpers and wheel-lip mouldings • Chrome front tow hooks (4x4) • PLATINUM badges • Chrome door handles • Power-deployable running boards • Power-folding, heated, chrome-capped sideview mirrors with memory, integrated turn-signal indicators, security approach lamps and auto-dimming driver-side feature • 20-in. polished-aluminum wheels • Bright bodyside accent mouldings • High-gloss Black B-pillar appliqué • Chrome exhaust tip • Satin-finish tailgate appliqué • Unique leather-wrapped steering wheel with wood insert, power tilt column and memory • Unique woodgrain and brushed-aluminum appliqués on centre panel and console • Sony AM/FM stereo/6-disc in-dash CD changer with MP3 capability and speed-compensated volume control • Sun visors with covered illuminated mirrors and Universal Garage Door Opener • Unique leather-trimmed, 10-way power, heated and cooled front bucket seats with tuxedo stripe detailing • Front flow-through console with unique leather-trimmed lid and floor shifter • Unique leather-trimmed heated 60/40 split one-touch fold-up rear bench with folding armrest • Unique scuff plates and instrument cluster face • Power-sliding rear window • Rain-sensing windshield wipers • Reverse Sensing System • Rear View Camera • Power moonroof • Ambient Lighting • Tailgate Step



# WHEELS



17-in. Silver-Painted Styled-Steel  
Standard on XL



17-in. 7-Lug Silver-Painted Steel  
Included with Heavy-Duty  
Payload Package



17-in. Machined-Aluminum  
Standard on STX



17-in. Painted Machined-Aluminum  
Standard on XLT



18-in. Machined Cast-Aluminum  
Standard on FX4; Optional on STX



18-in. Machined-Aluminum  
with Painted Accents  
Standard on FX2



18-in. Bright-Aluminum  
Standard on LARIAT



18-in. Chrome-Clad Aluminum  
Included with XTR Package and  
LARIAT Chrome Package



18-in. 7-Spoke Aluminum with  
KING RANCH®-Painted Accents  
Standard with KING RANCH Package



20-in. Chrome-Clad Aluminum  
Optional with XTR Package and  
LARIAT Chrome Package



20-in. 6-Spoke  
Machined-Aluminum  
Optional on FX4 and LARIAT



20-in. Premium Painted-Aluminum  
Optional with  
KING RANCH Package



20-in. 6-Spoke Premium  
Painted-Aluminum  
Optional on FX2



20-in. Polished-Aluminum  
Included with  
PLATINUM Package

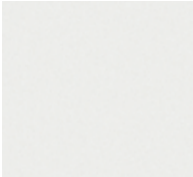


22-in. Polished Forged-Aluminum  
with Lava-Painted Accents  
Included on F-150  
Harley-Davidson™



# COLOURS

## Exterior



Oxford White



White Platinum Metallic Tri-Coat<sup>1</sup>



Pueblo Gold Metallic



Vermillion Red



Red Candy Metallic Tinted Clearcoat<sup>1</sup>



Royal Red Metallic



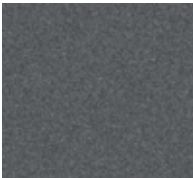
Blue Flame Metallic



Dark Blue Pearl Metallic



Ingot Silver Metallic



Sterling Grey Metallic



Lava Metallic



Tuxedo Black

## Interior



Camel Premium Cloth



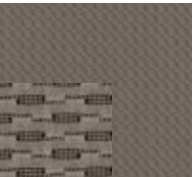
Camel Premium Leather



Medium Stone Vinyl



Medium Stone Cloth



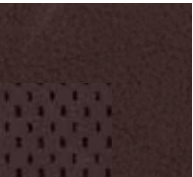
Medium Stone Premium Cloth



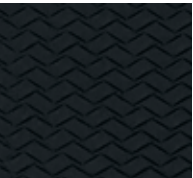
Medium Stone PLATINUM Leather



Black Sport Cloth



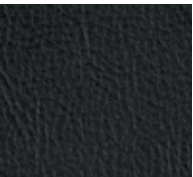
Sienna Brown PLATINUM Leather



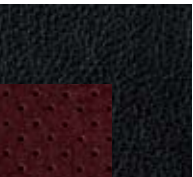
Black Sport Leather



Chaparral Leather



Black Premium Leather



Black/Lava Leather

MONOTONE EXTERIOR	XL	STX	XLT	FX2 & FX4	LARIAT	PLATINUM	FORD HARLEY-DAVIDSON™ F-150
Oxford White	■	■	■ ■	■	■ ■		
White Platinum Metallic Tri-Coat <sup>1</sup>					■ ■	■ ■	
Pueblo Gold Metallic			■				
Vermillion Red	■	■	■ ■	■			
Red Candy Metallic Tinted Clearcoat <sup>1</sup>			■ ■	■	■ ■		
Royal Red Metallic			■ ■		■ ■		
Blue Flame Metallic	■	■	■ ■	■			
Dark Blue Pearl Metallic			■ ■		■ ■		
Ingot Silver Metallic	■	■	■	■	■	■ ■	
Sterling Grey Metallic	■	■	■	■		■ ■	
Lava Metallic							■
Tuxedo Black	■	■	■ ■	■	■ ■	■ ■	■

TWO-TONE EXTERIOR	XLT	FX4	LARIAT	KING RANCH
Oxford White/Pueblo Gold Metallic			■ ■	■
Oxford White/Ingot Silver Metallic	■			
Oxford White/Sterling Grey Metallic		■		
White Platinum Metallic Tri-Coat/Pueblo Gold Metallic <sup>1</sup>			■ ■	■
Vermillion Red/Ingot Silver Metallic	■			
Vermillion Red/Sterling Grey Metallic		■		
Red Candy Metallic Tinted Clearcoat/Pueblo Gold Metallic <sup>1</sup>			■ ■	
Red Candy Metallic Tinted Clearcoat/Ingot Silver Metallic <sup>1</sup>	■			
Royal Red Metallic/Pueblo Gold Metallic			■ ■	■
Royal Red Metallic/Ingot Silver Metallic	■			
Blue Flame Metallic/Ingot Silver Metallic	■			
Blue Flame Metallic/Sterling Grey Metallic		■		
Dark Blue Pearl Metallic/Pueblo Gold Metallic			■ ■	■
Dark Blue Pearl Metallic/Ingot Silver Metallic	■			
Ingot Silver Metallic/Sterling Grey Metallic		■		
Sterling Grey Metallic/Ingot Silver Metallic	■			
Tuxedo Black/Pueblo Gold Metallic			■ ■	■
Tuxedo Black/Ingot Silver Metallic	■			
Tuxedo Black/Sterling Grey Metallic		■		

■ CAMEL / TAN   ■ STONE / MEDIUM STONE   ■ BLACK / BLACK   ■ BLACK / SIENNA BROWN   ■ CAMEL / CHAPARRAL   ■ BLACK / LAVA

<sup>1</sup>Extra-cost option.



For more information on  
Ford of Canada products and services,  
please visit our website:



**Our commitment to you...  
Peace-of-Mind Protection**

- Basic Coverage: 3 years/60,000 km
- Powertrain Limited Warranty:  
5 years/100,000 km
- Corrosion Warranty:  
5 years/unlimited distance
- Roadside Assistance: 5 years/100,000 km

Certain conditions apply. For more information on these warranties and coverages, ask your local Ford of Canada Dealer or visit [ford.ca](http://ford.ca).

**For prompt, courteous answers  
to your questions:**

Ford Customer Relationship Centre  
1-800-565-3673  
Ford Credit Customer Service Centre  
1-877-636-7346

Please note: The electronic version of the  
Ford of Canada vehicle brochure is a condensed  
version of the original printed version.

Competitive comparisons are based on 2009 competitive models, publicly available information and Ford data at the time of printing of the 2010 original printed version. Some features discussed may be optional. Vehicles shown may contain optional equipment. Features shown may be offered only in combination with other options or subject to additional ordering requirements or limitations. Dimensions shown may vary due to optional features and/or production variability. Following publication of the 2010 original printed brochure, certain changes in standard equipment, options and the like, or product delays may have occurred which would not be included in these pages. Your Ford of Canada Dealer is your best source for up-to-date information. Ford Motor Company of Canada, Limited, reserves the right to change product specifications at any time without incurring obligations. Colours may not be exactly as illustrated. Please see your sales consultant for specific colour and model availability. Please visit your local dealer or [ford.ca](http://ford.ca) for complete vehicle details.

**FORD EXTENDED SERVICE PLAN**

For a purchase or lease, the Ford Extended Service Plan (ESP) gives you "Peace-of-Mind" protection designed to cover key vehicle components and help protect you from the cost of unexpected repairs. To add to your peace of mind and help protect your investment beyond your New Vehicle Basic Warranty, complement your ESP with a prepaid maintenance plan that covers all required scheduled maintenance items for your vehicle and 8 wear items. Ask your Dealer for a Ford ESP, the only service contract backed exclusively by Ford Motor Company of Canada, Limited, and honoured at all Ford and Ford Lincoln Dealerships across North America. Certain limitations and exclusions apply, see your Dealer for details.

**FORD CREDIT**

Get the ride you want. Whether you plan to lease or finance, you'll find the choices that are right for you at Ford Credit. Ask your local Ford of Canada Dealer for details or check us out at [fordcredit.ca](http://fordcredit.ca).



Ranger

F-150

F-Series Super Duty®