

2016 | **TAURUS+SHO**



Go Further



Treat yourself to the driver's seat.

This is the full-size sedan experience you're looking for. Powerful performance. Sure-footed handling. Spacious, finely crafted interior. Smart driver-assist technologies.¹ Generous trunk space. Plus, new SYNC[®] 3 – our next generation of voice-activated technology^{1,2} – to keep you connected on each drive. Go further in the 2016 Ford Taurus.

Limited. Shadow Black. Available equipment.

¹Available feature. ²Some mobile phones and some digital media players may not be fully compatible. Driving while distracted can result in loss of vehicle control. Only use SYNC/other devices, even with voice commands, when it is safe to do so. SYNC voice recognition and screens available in English, French and Spanish. Some features may be locked out while the vehicle is in motion.

8.1 L/100 km (**35**MPG) HWY¹
11.8 L/100 km (**24**MPG) CITY¹



Embrace curves and devour straightaways.

Ford Taurus does. Our engineers tuned the suspension calibration of each Taurus model to deliver an engaging driving experience.

Stay poised through the corners, even when accelerating, with standard Torque Vectoring Control. The system applies slight braking force to the inside front wheel as needed to help more torque reach the road and help keep Taurus firmly planted.

Keep on track through sharp turns with standard Curve Control. When it senses you're taking a curve too quickly, the system can slow the vehicle by as much as 16 km/h in about a second to help maintain control.² All-wheel drive (AWD)³ balances torque between the front and rear wheels to enhance handling and maximize traction. Also, with standard AdvanceTrac[®] electronic stability control and vented front rotors (all rotors are vented for SHO), the 2016 Taurus is engineered for maximum agility.

Fuel efficiency rating of 8.1L/100 km highway¹ is yours when you equip Taurus with the 2.0L EcoBoost[®] engine.³ This turbocharged, direct-injection powerplant supplies immediate straight-line acceleration, and is teamed with a 6-speed SelectShift[®] automatic transmission. The 3.5L Ti-VCT engine features twin independent variable camshaft timing, allowing for a robust 288 hp while also contributing to efficiency.⁴

Limited. Shadow Black. Available equipment.

Driver-assist features are supplemental and do not replace the driver's attention, judgment and need to control the vehicle.
¹2.0L EcoBoost engine, FWD. Fuel consumption ratings based on Government of Canada approved test methods. Actual fuel consumption will vary for all ratings.
²Remember that even advanced technology cannot overcome the laws of physics. It's always possible to lose control of a vehicle due to inappropriate driver input for the conditions. ³Available feature. ⁴3.5L Ti-VCT engine, FWD. 13.1L/100 km city and 8.7L/100 km hwy (22 mpg city/32 hwy).



Reward accomplishments.

With space to stretch out. Plus amenities that help you relax. Even revive.

Massage your lower back and upper leg area, and change your seat contour, with leather-trimmed,¹ power front seats equipped with Active Motion.^{®1} Heated and cooled power front seats, power-adjustable pedals and power sideview mirrors are standard on Limited and SHO. All feature memory² to make life even more convenient.

Rest your hand on soft-touch surfaces in this meticulously assembled interior full of premium materials, finely stitched leather-trimmed seats¹ and eye-catching accents.

Satisfy your senses with a grip of the heated steering wheel¹ or by loading the massive trunk with up to 569 litres (20.1 cu. ft.) of gear.³ To experience this – and more – on every drive, enjoy some quality time in a 2016 Ford Taurus.

HEATED



STEERING¹

HEATED/COOLED



FRONT SEATS¹

ACTIVE MOTION



FRONT SEATS¹

Limited. Charcoal Black leather trim with perforated inserts. Available equipment.

¹Available feature. ²Memory feature not on front-passenger seat. ³Weight of passengers and cargo must not exceed the limit shown on the Tire Information Label.

SYNC® 3. The next generation is here.

Standard on Limited and SHO and optional on SEL, new SYNC 3 technology^{1,2} brings enhanced next-level connectivity to Taurus. In addition to all the voice-activated benefits of the base SYNC system – placing and answering calls, and controlling music from your USB or smartphone – you'll love the innovative new features and easy-to-use new interface of SYNC 3.

New hardware meets new software on the easy-to-read 8" colour LCD touch screen that displays phone, audio and navigation¹ functions.

High-speed performance, including a capacitive touch screen with a convenient swipe feature, means you'll experience quick responses to your touch or voice commands.

Enhanced voice recognition lets you talk with simple, real-world commands and the system responds naturally to your voice, making hands-free calling that much easier.

Siri® seamless integration brings the power of Siri Eyes Free³ and your iPhone^{®3} into your vehicle.

Automatic updates over Wi-Fi^{®4} let you keep SYNC 3 up to date with the latest software as new updates become available.

SYNC. Say the word.™

Standard on SE and SEL, Ford SYNC² with a 4.2" screen delivers many of the great features found on SYNC 3, including:

Hands-free calling that lets you make a call with the simple push of a button along with the sound of your voice.

Automatic phone book download that transfers the names and numbers in your compatible phone automatically, once paired.

Voice-activated music commands that let you say what music you want to hear and listen to it easily with voice-activated search, or say "Bluetooth[®] audio" to stream content from your phone.

Plug-in capability with your MP3 player, USB or iPod.[®]

¹Available feature. ²Some mobile phones and some digital media players may not be fully compatible. Driving while distracted can result in loss of vehicle control. Only use SYNC/other devices, even with voice commands, when it is safe to do so. SYNC voice recognition and screens available in English, French and Spanish. Some features may be locked out while the vehicle is in motion. ³You must have a Bluetooth-enabled phone paired to your SYNC system. ⁴Optional Navigation System map updates cannot be received via Wi-Fi and require a separate update. Data rates may apply.

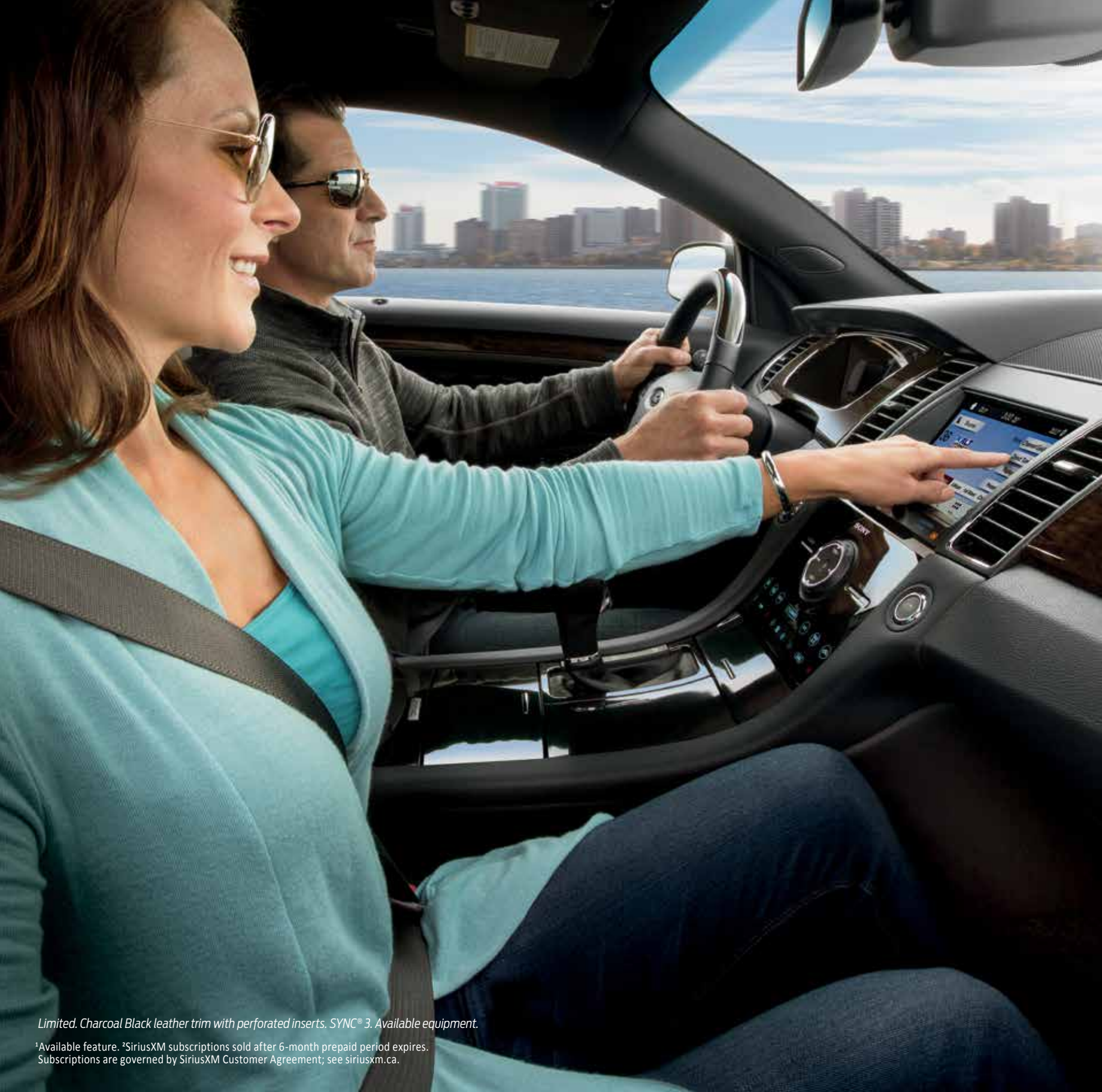
| SYNC



A new capacitive touch screen with SYNC 3 has impressive responsiveness like a smartphone's swipe feature, as well as pinch-to-zoom functionality within navigation.¹

Simple music access helps you find your favourite music fast. Through intelligent voice commands, SYNC 3 can automatically switch between music sources.

Easy destination entry within navigation¹ helps you locate your favourite restaurants, nearest ATM, closest fuel station and more.



Brighten your world.

In addition to smart standards that make any drive easier, a long list of available features allows you to create a 2016 Ford Taurus that fits your specific needs. Warm things up with heated front seats¹ and a heated steering wheel,¹ or cool them down with cooled front seats¹ and a rear-window power sunshade.¹ Pump up your audio with an amazing 12-speaker Audio System from Sony[®] that features a centre channel instrument panel speaker and 390 watts of continuous power. To brighten your environment, select a power moonroof.¹

Listen to your favourites all across Canada with SiriusXM.[®] Your 6-month prepaid subscription gets you the best in audio entertainment including 100% commercial-free music from every genre, world-class news, sports, comedy and entertainment.²



Limited. Charcoal Black leather trim with perforated inserts. SYNC[®] 3. Available equipment.

¹Available feature. ²SiriusXM subscriptions sold after 6-month prepaid period expires. Subscriptions are governed by SiriusXM Customer Agreement; see siriusxm.ca.



Command respect.

There's power in a name. Like the 365 hp¹ in Super High Output (SHO).

Instant acceleration erupts from the twin turbos and direct injection of its 3.5L EcoBoost.[®] Together with AWD and vented discs, Taurus SHO excels at true enthusiast performance, along with 9.8L/100 km (29 mpg) hwy and 14.7L/100 km (19 mpg) city.²

Add additional muscle with the SHO Performance Package, which includes: a 3.16:1 final drive ratio, an enhanced sport-tuned suspension, performance friction brake pads, sport-calibrated steering, and performance summer tires.³ A "Sport Mode" setting on the AdvanceTrac[®] ESC (electronic stability control) system even lets you do some fine-tuning of your own.



SHO. Ruby Red Metallic Tinted Clearcoat. Available equipment.

350 LB.-FT.¹ | 365 HP¹

1/4 MILE 14.4 SEC.⁴

0-60 MPH
5.5 SEC.⁴



¹Figures achieved using 93-octane fuel. ²Fuel consumption ratings based on Government of Canada approved test methods. Actual fuel consumption will vary. ³Ford does not recommend using summer tires when temperatures drop to approximately 7°C or below (depending on tire wear and environmental conditions) or in snow/ice conditions. If the vehicle must be driven in these conditions, Ford recommends using all-season or winter tires. ⁴Based on Ford testing.



Adapt to your surroundings.

Smart technology powers Taurus. Using ultrasonic sensors and radar, advanced driver-assist technologies¹ can help you parallel park, avoid collisions and more.

Make parallel parking easier with active park assist.¹ This system not only helps you find a spot, it actually steers the vehicle into place while you control the gear shifter, and brake and accelerator pedals.

Maintain your lane with help from our Lane-Keeping System.^{1,2} It can detect lane markings with a forward-facing camera and send vibration pulses to the steering wheel and apply steering torque if needed, prompting you to steer back toward centre.

Stay alert to traffic detected in blind spots as you drive forward, or traffic nearing either side of the vehicle as you slowly back up, thanks to BLIS[®] (Blind Spot Information System) with cross-traffic alert.¹ It helps warn you using lights embedded in the sideview mirrors.³

Get a heads-up from adaptive cruise control and collision warning with brake support.¹ This system helps maintain your choice of 4 preset gaps from the vehicle in front of you and can alert you to a potential collision. If one is detected, it flashes a warning on the windshield, sounds an alarm, and helps by pre-charging the brake system.

Driver-assist features are supplemental and do not replace the driver's attention, judgment and need to control the vehicle.
¹Available feature. ²Lane-Keeping System does not control steering. ³BLIS replaces standard integrated blind spot mirrors.



Protect your own.

Should the unthinkable happen, the 2016 Ford Taurus is engineered to help protect.

An intricate safety cage around the passenger compartment is formed from a masterful mix of high-strength and ultra-high-strength boron steel. In certain collisions, driver and front-passenger airbags adjust their deployment force to occupant size, position and safety belt status.

Help keep all 4 wheels firmly planted, particularly in inclement weather, with standard AdvanceTrac® ESC (electronic stability control).¹ To help you see farther at night, auto high beams² activate when no automotive headlamps or tail lamps are detected in front. A 911 Assist³ feature in SYNC® can place a call to a 911 operator when an airbag deploys. Plus, the SOS Post-Crash Alert System™⁴ can assist rescue workers in locating your vehicle.

¹Remember that even advanced technology cannot overcome the laws of physics. It's always possible to lose control of a vehicle due to inappropriate driver input for the conditions. ²Available feature. ³The vehicle's electrical system (including the battery), the wireless service provider's signal and a connected mobile phone must all be available and operating for 911 Assist to function properly. These systems may become damaged in a crash. The paired mobile phone must be connected to SYNC, and the 911 Assist feature enabled, in order for 911 to be dialed. When the feature is ON, 911 Assist uses your paired and connected mobile phone to assist occupants to contact emergency services by dialing 911 if your airbag deploys or, on certain vehicles, if the emergency fuel pump shut-off is activated. ⁴SOS hardware may become damaged or the battery may lose power in a crash, which could prevent operation. Not all crashes will activate an airbag or safety belt pretensioner.

ADVANCETRAC



ELECTRONIC STABILITY CONTROL¹



911 ASSIST³



RIGID SAFETY CAGE

SHO. Ruby Red Metallic Tinted Clearcoat. Available equipment.

Taurus Specifications



SEL. Ingot Silver Metallic. Available equipment.

Standard Features

Mechanical

- 4-wheel disc Anti-Lock Brake System (ABS)
- Brake- and engine-actuated traction control
- Compact spare wheel and tire
- Electric power-assisted steering (EPAS)
- Suspension – Front: independent MacPherson strut
- Suspension – Rear: independent multilink
- Torque Vectoring Control

Seating

- Front bucket seats
- 60/40 split-fold rear seat back with fold-down centre armrest

Interior

- 12-volt powerpoints (3)
- Accessory delay for power features
- Cruise control
- Driver and front-passenger seat back map pockets
- Front and rear carpeted floor mats
- Front overhead console with dome and map lights
- Power door locks
- Rear-seat reading lights
- Sliding sun visors with illuminated vanity mirrors
- Steering wheel-mounted cruise, audio and 5-way controls (2)
- Tilt/telescoping steering column

Exterior

- Easy Fuel® capless fuel filler
- Light-emitting diode (LED) tail lamps
- Power sideview mirrors
- Rear-window defroster
- Solar-tinted glass

Safety & Security

- Personal Safety System™ for driver and front passenger includes dual-stage front airbags¹; safety belt pretensioners, safety belt energy-management retractors, safety belt usage sensors, driver's seat position sensor, crash severity sensor, restraint control module and Front-Passenger Sensing System
- Front-seat side airbags¹
- Safety Canopy® System with side-curtain airbags¹ and rollover sensor
- 3-point safety belts for all seating positions
- AdvanceTrac® ESC (electronic stability control) and Curve Control
- Battery saver
- Belt-Minder™ front safety belt reminder
- Child-safety rear door locks
- Emergency trunk release
- Illuminated Entry System
- LATCH – Lower Anchors and Tether Anchors for Children MyKey®
- Rear view camera
- SecuriCode™ invisible keypad
- SecuriLock® Passive Anti-Theft Engine Immobilizer System
- SOS Post-Crash Alert System™
- Tire Pressure Monitoring System (excludes spare)

Estimated Fuel Consumption Ratings² and Dimensions

3.5L Ti-VCT V6

- 288 hp @ 6,500 rpm
- 254 lb.-ft. of torque @ 4,000 rpm
- 6-speed SelectShift® automatic
- FWD 13.1L/100 km city and 8.7L/100 km hwy (22 mpg city/32 hwy)
- AWD 13.6L/100 km city and 9.8L/100 km hwy (21 mpg city/29 hwy)

2.0L EcoBoost® 4-cylinder

- 240 hp @ 5,500 rpm³
- 270 lb.-ft. of torque @ 3,000 rpm³
- 6-speed SelectShift automatic
- FWD 11.8L/100 km city and 8.1L/100 km hwy (24 mpg city/35 hwy)

3.5L EcoBoost V6

- 365 hp @ 5,500 rpm³
- 350 lb.-ft. of torque @ 1,500–5,000 rpm³
- 6-speed SelectShift automatic
- AWD 14.7L/100 km city and 9.8L/100 km hwy (19 mpg city/29 hwy)

Exterior mm (in.)

- Wheelbase 2,867 (112.9)
- Length 5,154 (202.9)
- Height 1,543 (60.7)
- Width – Excluding mirrors 1,935 (76.2)
- Width – Including mirrors 2,176 (85.7)

Interior mm (in.)

- Front/Rear Head room 991 (39.0)/960 (37.8)
- Shoulder room 1,471 (57.9)/1,445 (56.9)
- Hip room 1,430 (56.3)/1,417 (55.8)
- Leg room 1,123 (44.2) max./968 (38.1)

Capacities litres (cu. ft.)

- Passenger volume 2,895 (102.2)
- Luggage capacity 569 (20.1)
- Total interior volume 3,464 (122.3)

Fuel Tank (litres)

- FWD/AWD 72/75

¹Always wear your safety belt and secure children in the rear seat. ²Fuel consumption ratings based on Government of Canada approved test methods. Actual fuel consumption will vary for all ratings. ³Figures achieved using 93-octane fuel.

SE & SEL



SEL. Blue Jeans Metallic. Available equipment.

SYNC with 4.2" colour LCD screen in centre stack.

Intelligent Access with push-button start.¹

Cargo organizer.¹

¹Available feature.

SE

Equipment Group 100A
Includes all standard features, plus:

Mechanical

3.5L Ti-VCT V6 engine
6-speed SelectShift[®] automatic transmission with Sport Mode and shifter button activation
Front-wheel drive (FWD)

Seating

4-way adjustable front head restraints
6-way power driver and front-passenger seats with manual lumbar adjustment
Cloth seats

Interior

AM/FM stereo/single-CD player with MP3 capability and 6 speakers
Day/night rearview mirror
Ford SYNC[®] Enhanced Voice Recognition Communications and Entertainment System with 4.2" colour LCD screen in centre stack, 911 Assist,[®] AppLink,[™] and 1 smart-charging USB port
Front centre floor console with armrest, cupholders and storage
Message centre
Power windows with one-touch-up/-down driver's side window feature
Single-zone manual air conditioning

Exterior

18" Sparkle Silver-painted aluminum wheels with P235/55R18 all-season tires
Black, power sideview mirrors with integrated blind spot mirrors
Quasi-dual exhaust with bright tips
Remote Keyless Entry System with integrated key transmitter remotes (2)
Wiper-activated halogen headlamps with autolamp

Available Options

2.0L EcoBoost[®] 4-cyl. engine with 6-speed SelectShift automatic transmission with shifter button activation, and engine block heater
Engine block heater

Available Ford Custom Accessories

Visit your Ford of Canada Dealer to shop the complete collection

SEL

Equipment Group 200A
Includes select SE features, plus:

Seating

Unique cloth seats

Interior

Auto-dimming rearview mirror
Covered front-row cupholders and storage
Dual-zone electronic automatic temperature control
Leather-wrapped shift knob with chrome trim
Leather-wrapped steering wheel
Outside temperature display
Remote Start System
SiriusXM[®] with 6-month prepaid subscription

Exterior

Anti-theft perimeter alarm
Body-colour, power, heated sideview mirrors with security approach lamps
LED supplemental park lamps
Reverse Sensing System

Available Equipment Group

Equipment Group 201A – SYNC 3 Convenience Package includes SYNC 3 Enhanced Voice Recognition Communications and Entertainment System with 8" colour LCD touch screen in centre stack with swiping capability, 911 Assist, AppLink, and 2 smart-charging USB ports + additional centre channel speaker + power-adjustable pedals + Intelligent Access with push-button start (2 key fob transmitters) + heated front seats

Available Options

2.0L EcoBoost 4-cyl. engine with 6-speed SelectShift automatic transmission with shifter button activation, and engine block heater (n/a with AWD)
20" 10-spoke machined and low-gloss ebony-painted aluminum wheels with P245/45R20 all-season tires (requires 201A)
All-wheel drive (AWD)
Engine block heater
Leather-trimmed seats with heated front seats (requires 201A)
Power moonroof
Rear spoiler
Voice-activated Navigation System with pinch-to-zoom capability (requires 201A)

Available Ford Custom Accessories

Visit your Ford of Canada Dealer to shop the complete collection



18" Sparkle Silver-Painted Aluminum
Standard: **SE and SEL**



20" 10-Spoke Machined and Low-Gloss Ebony-Painted Aluminum
Optional: **SEL**

Limited

Equipment Group 300A

Includes select SEL features, plus:

Mechanical

All-wheel drive (AWD)

Seating

10-way power driver and front-passenger seats with driver's side memory feature

Heated and cooled front seats

Leather-trimmed seats with perforated leather inserts

Interior

Ambient lighting

Audio System from Sony® with 12 speakers including additional centre channel speaker

BLIS® (Blind Spot Information System) with cross-traffic alert

Bright front door-sill scuff plates

Cargo net

Intelligent Access with push-button start (2 key fob transmitters)

Leather-wrapped steering wheel with wood accent

"LIMITED" branded front floor mats

Power-adjustable pedals with memory

Power-tilt/-telescoping steering column

Power windows with global open and one-touch-up/-down for driver and front passenger

SYNC® 3 Enhanced Voice Recognition

Communications and Entertainment System with 8" colour LCD touch screen in centre stack with swiping capability, 911 Assist,® AppLink,™ and 2 smart-charging USB ports

Universal garage door opener

Exterior

19" premium Luster Nickel-painted aluminum wheels with P255/45R19 LRR all-season tires

Auto high beams with rain-sensing windshield wipers

Chrome-accented, power, heated sideview mirrors with memory, security approach lamps and auto-dimming driver's side

Available Equipment Group

Equipment Group 301A – Comfort Package

includes heated steering wheel, heated rear outboard seats, and rear-window power sunshade

Available Options & Package

20" polished aluminum wheels with P245/45R20 all-season tires

20" 10-spoke machined and low-gloss ebony-painted aluminum wheels with P245/45R20 all-season tires

Driver Assist Package includes adaptive cruise control and collision warning with brake support, Lane-Keeping System, and active park assist

Engine block heater

Multicontour front seats with Active Motion®

Power moonroof

Rear spoiler

Voice-activated Navigation System with pinch-to-zoom capability

Available Ford Custom Accessories

Visit your Ford of Canada Dealer to shop the complete collection



19" Premium Luster Nickel-Painted Aluminum Standard



20" Polished Aluminum Optional



20" 10-Spoke Machined and Low-Gloss Ebony-Painted Aluminum Optional

Shadow Black. Available equipment.

Rear view camera.

Rear-window power sunshade.¹

"LIMITED" branded front floor mats.

¹Available feature.



Charcoal Black leather-trimmed seats with Charcoal Black perforated inserts and front-seat embroidered "SHO" graphic.

Heated rear-seat controls, included in Equipment Group 401A.

"SHO" 3.5L EcoBoost V6 engine cover.

Rear spoiler.

Equipment Group 400A
Includes select LIMITED features, plus:

Mechanical

- 3.5L EcoBoost® V6 engine
- 6-speed SelectShift® automatic transmission with Sport Mode and paddle shifters
- 2.77:1 final drive ratio
- Engine block heater
- Sport-tuned suspension
- Vented front rotors

Seating

- Leather-trimmed seats with perforated inserts
- "SHO" graphic embroidered on front seat backs

Interior

- Aluminum pedal covers
- "SHO" branded front floor mats
- Top-grain leather-wrapped steering wheel

Exterior

- 20" machined and painted aluminum wheels with P245/45R20 V-rated all-season tires
- Dual exhaust with bright tips
- LED supplemental park lamps with piano black bezels
- Piano black mesh grille
- Piano black, power, heated sideview mirrors with memory, security approach lamps and auto-dimming driver's side
- Rear spoiler
- "SHO" branded side fender vents

Available Equipment Group

Equipment Group 401A – Comfort Package includes heated steering wheel, heated rear outboard seats, and rear-window power sunshade

Available Options & Packages

20" 10-spoke machined and low-gloss ebony-painted aluminum wheels with P245/45R20 all-season tires (n/a with SHO Performance Package)

Driver Assist Package includes adaptive cruise control and collision warning with brake support, Lane-Keeping System, and active park assist (n/a with SHO Performance Package)

Multicontour front seats with Active Motion®

Power moonroof

SHO Performance Package includes an enhanced sport-tuned suspension, performance friction brake pads, sport-calibrated steering, AdvanceTrac® ESC (electronic stability control) "Sport Mode" setting, 3.16:1 final drive ratio, Alcantara® trimmed steering wheel, P245/45R20 Performance Summer Tire Compound¹ and tire inflator and sealant kit (n/a with Driver Assist Package)

Voice-activated Navigation System with pinch-to-zoom capability

Available Ford Custom Accessories

Visit your Ford of Canada Dealer to shop the complete collection



20" Machined and Painted Aluminum
Standard



20" 10-Spoke Machined and Low-Gloss Ebony-Painted Aluminum
Optional

¹Ford does not recommend using summer tires when temperatures drop to approximately 7°C or below (depending on tire wear and environmental conditions) or in snow/ice conditions. If the vehicle must be driven in these conditions, Ford recommends using all-season or winter tires.

Exteriors This helpful guide is intended for selecting an exterior colour – not features, options or a trim level.



White Platinum Metallic Tri-coat



Oxford White



Ingot Silver Metallic



Magnetic Metallic



Ruby Red Metallic Tinted Clearcoat



Bronze Fire Metallic Tinted Clearcoat



Caribou Metallic



Blue Jeans Metallic

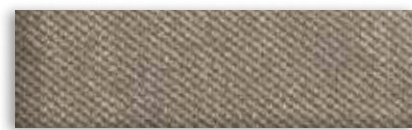


Guard Metallic

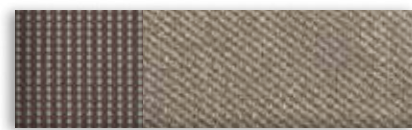


Shadow Black

Interiors



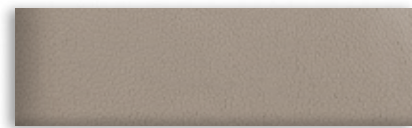
1 Dune Cloth



2 Dune Cloth



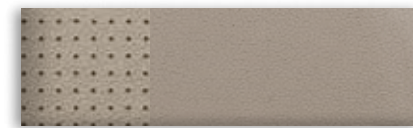
3 Charcoal Black Cloth



4 Dune Leather



5 Charcoal Black Leather



6 Dune Leather with Perforated Inserts



7 Charcoal Black Leather with Perforated Inserts



8 Charcoal Black Leather with Charcoal Black Perforated Inserts and front-seat embroidered "SHO" graphics



9 Charcoal Black Leather with Mayan Grey Miko® Suede Perforated Inserts and front-seat embroidered "SHO" graphics

Exteriors	Interiors								
	SE	SEL				Limited		SHO	
White Platinum Metallic Tri-coat ¹		2	3	4	5	6	7	8	9
Oxford White	1	2	4						
Ingot Silver Metallic	1	2	3	4	5	6	7	8	9
Magnetic Metallic	1	2	3	4	5	6	7	8	9
Ruby Red Metallic Tinted Clearcoat ¹		2	3	4	5	6	7	8	9
Bronze Fire Metallic Tinted Clearcoat ¹		2	3	4	5	6	7	8	
Caribou Metallic	1	2	3	4	5	6	7		
Blue Jeans Metallic	1	2	3	4	5	6	7	8	9
Guard Metallic	1	2	3	4	5	6	7	8	9
Shadow Black	1	2	3	4	5	6	7	8	9

4,5 Optional on SEL

Colours are representative only. See your Ford of Canada Dealer for actual paint/trim options.
¹Additional charge.



SEL in Ingot Silver Metallic customized with smoked moonroof deflector and side window deflectors, moulded splash guards, chrome mirror caps and chrome-plated wheel lock kit

Sport pedals

All-weather floor mats

Remote Access

Rear spoiler



Exterior

- Full vehicle cover²
- Hood protector²
- Locking fuel plug
- Rear decklid spoiler



Interior

- Ash cup/coin holder
- Cargo organizers and protectors
- Carpeted floor mats
- Interior light kit



Electronics

- Remote start systems
- Vehicle security system
- Warning sensor systems²

²Ford Licensed Accessory.



Scan this QR code to learn more about Ford vehicles at m.ford.ca. Mobile data rates may apply.

Our commitment to you: Peace-of-Mind Protection

- Basic Coverage: 3 years/60,000 km
- Powertrain Limited Warranty: 5 years/100,000 km
- Corrosion Perforation Warranty: 5 years/unlimited distance
- Roadside Assistance: 5 years/100,000 km

Certain conditions apply. For more information on these warranties and coverages, ask your local Ford of Canada Dealer or visit ford.ca.

Ford Extended Service Plan. Help protect your investment and add to your peace of mind by complementing your vehicle purchase or lease with a Ford Extended Service Plan (ESP). Ford ESP protects you against unexpected repair costs after your Basic Coverage in the New Vehicle Limited Warranty expires by covering many vehicle components. Enjoy the drive even more by complementing your ESP with a prepaid maintenance plan, which covers all required scheduled maintenance for your vehicle, plus 8 wear items. See your Ford of Canada Dealer for details.

Ford Credit. Get the ride you want. Whether you plan to lease or finance, you'll find the choices that are right for you at Ford Credit. Ask your local Ford of Canada Dealer for details or check us out at fordcredit.ca.

Ford Original Accessories that are properly installed by the authorized Dealer that sold the accessory will be warranted for whichever provides you the greatest benefit: 24 months/ unlimited distance, or the remainder of your 3-year/60,000-km New Vehicle Limited Warranty. Ford Licensed Accessories (FLA) are warranted by the accessory manufacturer's warranty. FLA are designed and developed by the accessory manufacturer and have not been designed or tested to Ford Motor Company engineering requirements. Contact your local Ford of Canada Dealer for details and/or a copy of all limited warranties.

For prompt, courteous answers to your questions: Ford Customer Relationship Centre 1-800-565-3673; Ford Credit Customer Service Centre 1-877-636-7346.

Comparisons based on competitive models (class is Full-Size Sedans, Non-Hybrid based on Ford segmentation), publicly available information and Ford certification data at the time of printing. Some features discussed may be optional. Vehicles shown may contain optional equipment. Features shown may be offered only in combination with other options or subject to additional ordering requirements or limitations. Dimensions shown may vary due to optional features and/or production variability. Information is provided on an "as is" basis and could include technical, typographical or other errors. Ford Motor Company of Canada, Limited, makes no warranties, representations, or guarantees of any kind, express or implied, including but not limited to, accuracy, currency, or completeness, the operation of the information, materials, content, availability, and products. Your Ford of Canada Dealer is your best source for up-to-date information. Ford Motor Company of Canada, Limited, reserves the right to change product specifications at any time without incurring obligations. Colours may not be exactly as illustrated due to restrictions of the printing process. Please see your sales consultant for specific colour and model availability.

Alcantara is a registered trademark of Alcantara S.p.A., Italy. iPhone, iPod and Siri are trademarks of Apple Inc., registered in the U.S. and other countries. Miko is a registered trademark of Miko s.r.l. "SiriusXM," the SiriusXM logo, channel names and logos are trademarks of SiriusXM Radio Inc. and are used under licence. Sony is a registered trademark of the Sony Corporation. The Bluetooth word mark is a trademark of the Bluetooth SIG, Inc. Wi-Fi® is a registered trademark of the Wi-Fi Alliance.® All other trademarks, service marks, images and logos are property of their respective owners and are displayed in this publication with permission. All rights reserved.

Questions or comments?



blog.ford.ca



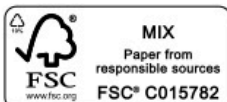
facebook.com/FordCanada



twitter.com/FordCanada



youtube.com/FordCanada



ford.ca

©2016 Ford Motor Company of Canada, Limited