

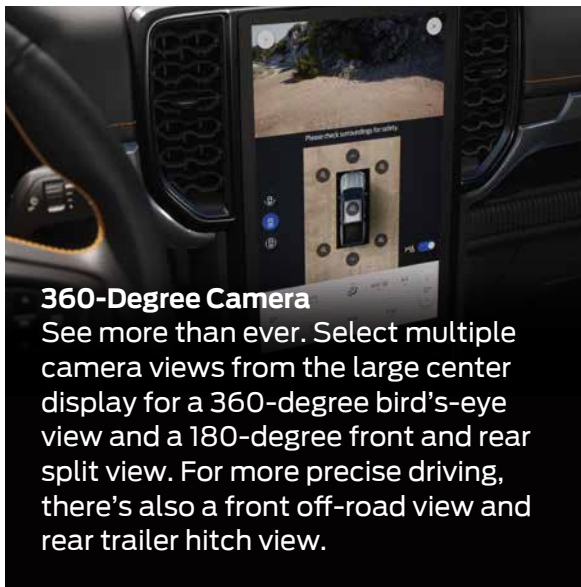
Next-Generation Ranger

Now with 5-Year Warranty



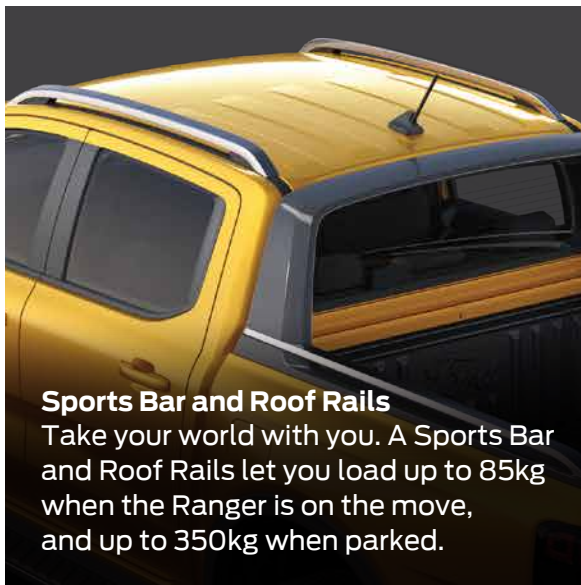
Ford

LIVE THE
RANGER LIFE



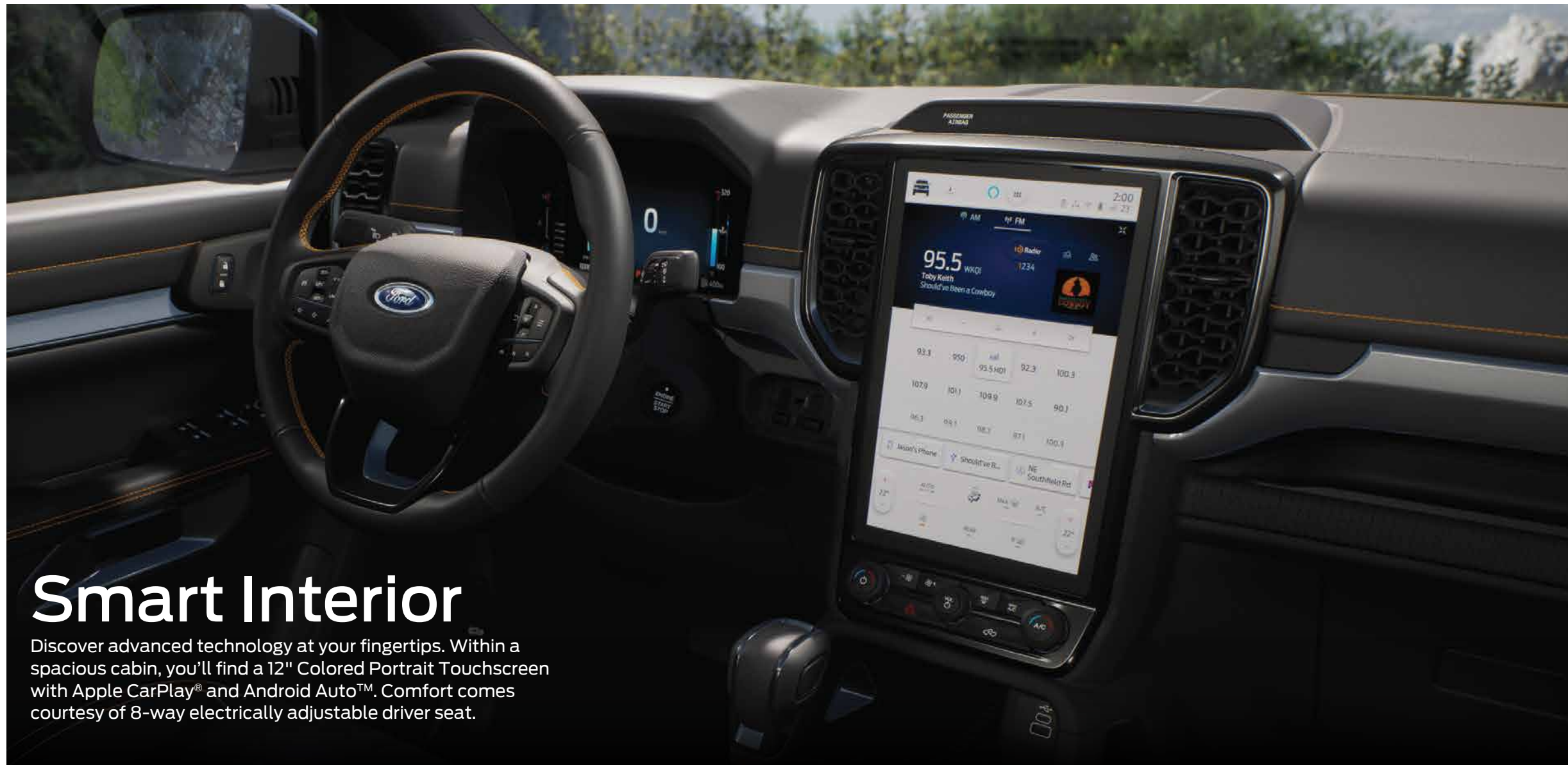
360-Degree Camera

See more than ever. Select multiple camera views from the large center display for a 360-degree bird's-eye view and a 180-degree front and rear split view. For more precise driving, there's also a front off-road view and rear trailer hitch view.



Sports Bar and Roof Rails

Take your world with you. A Sports Bar and Roof Rails let you load up to 85kg when the Ranger is on the move, and up to 350kg when parked.



Smart Interior

Discover advanced technology at your fingertips. Within a spacious cabin, you'll find a 12" Colored Portrait Touchscreen with Apple CarPlay® and Android Auto™. Comfort comes courtesy of 8-way electrically adjustable driver seat.

Next-Gen Ranger Wildtrak

Built for adventure. Designed to impress. With unmistakable Ford DNA, dynamic performance and the latest technology, the Next-Gen Ranger Wildtrak tames the toughest journeys in style.



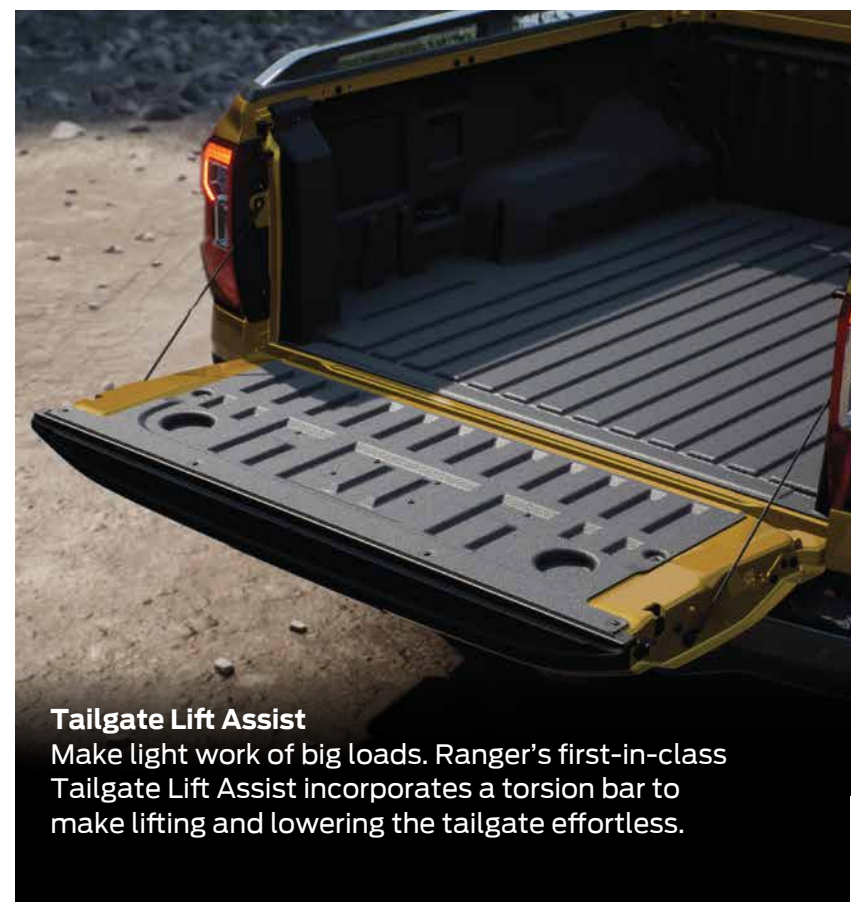
C-Clamp LED Headlamps

Flanking the bold new grille, the C-Clamp-shaped headlamps give the Ranger that unmistakable 'Built Ford Tough' look.



Selectable Drive Modes

Stay confident and in control over different terrain. In addition to 4x4 modes, up to 6 Selectable Drive Modes optimize performance for different surfaces, road conditions and vehicle usage.



Tailgate Lift Assist

Make light work of big loads. Ranger's first-in-class Tailgate Lift Assist incorporates a torsion bar to make lifting and lowering the tailgate effortless.

Next-Gen Ranger Sport

When adventure calls, answer in style. The Next-Gen Ranger Sport dials up the attitude with a bold, blacked-out look that complements its aggressive performance.



Power On Demand

The 2.0L Turbo diesel engine offers impressive power, torque, and fuel savings. It also brings improved noise levels. The Ranger's engine, mated with a 6-speed automatic transmission, delivers the next-level performance you need to conquer any challenge.



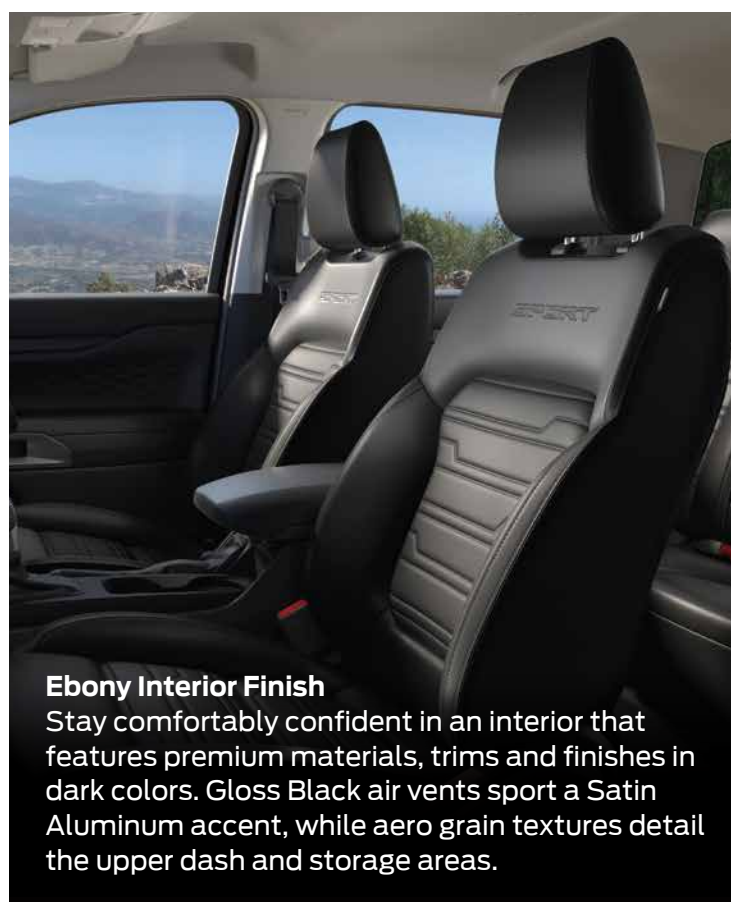
Keyless Entry & Push-Button Start

Get inside the Next-Gen Ranger without reaching for your key fob. Simply open the door to unlock the vehicle. Then push the START button to start the engine.



Electric Power-Assisted Steering

Get a more 'distinctive' feel when steering the vehicle with EPAS. Thanks to an electric motor, you get a stronger sense of control for a driving experience that's more responsive and dynamic. Also built into the steering wheel are controls that let you configure the digital instrument cluster for a more personalized drive.



Ebony Interior Finish

Stay comfortably confident in an interior that features premium materials, trims and finishes in dark colors. Gloss Black air vents sport a Satin Aluminum accent, while aero grain textures detail the upper dash and storage areas.

Selectable Drive Modes

Stay in control even as road conditions change. The Next-Gen Ranger lets you select driving modes that optimize performance across different terrain. Go from Normal, Eco, Slippery, to Tow / Haul in seconds.



Next-Gen Ranger XLT

No matter how tough, the Next-Gen Ranger XLT gets the job done. Equipped with advanced and thoughtful features, it's a versatile and good-looking truck that handles everything you throw its way.



Improved Bedliner

Load more with ease and added confidence, thanks to a bedliner with wider floor ribs. A generous surface area helps cargo grip better and makes kneeling down more comfortable while securing load. In addition, there are fast access mounting points for easier damage-free fitment of accessories such as canopies and load racks.



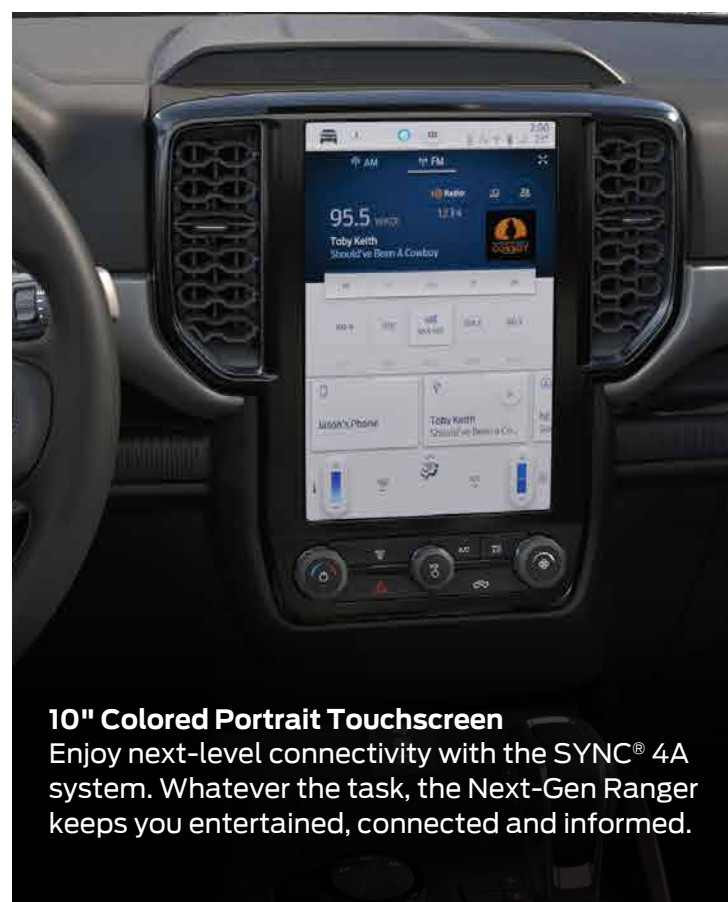
Wireless Charging Pad

Charging your smartphone is as simple as laying it flat on the wireless charging pad. No more wires, no more tangles, and best of all, no more drained phone batteries.



Rear Box Steps

Stepping up into the cargo area is now easier and safer than ever. The Next-Gen Ranger comes with tough, integrated side steps that are directly attached to the frame, inspiring confidence with every step.



10" Colored Portrait Touchscreen

Enjoy next-level connectivity with the SYNC® 4A system. Whatever the task, the Next-Gen Ranger keeps you entertained, connected and informed.

Next-Gen Ranger XLS

Smart, stylish and more than capable, the Next-Gen Ranger XLS is as tough as they come. Rise to the challenge with heavy-duty performance and a host of intelligent features.



Accessories

Nobody knows your Ford like we do. There's no better way to personalize your vehicle with the wide range of accessories available for every model. From interior to exterior, essential or aesthetic, you'll find lots of options to make your Ford uniquely your own.

Visit ford.com.ph for more info or scan this QR code to browse our wide range of Next-Gen accessories.



Vehicle shown is fitted with optional accessories. Please consult your Ford dealer regarding availability.



**Genuine
Quality**

Every Ford Genuine and Ford Licensed Accessory has undergone a rigorous evaluation process by Ford engineers to ensure they're fully compatible with your vehicle, ensuring you'll get optimal integration and performance.



**1 Year
Warranty**

When fitted to your new vehicle by an authorized Ford dealership prior to delivery, enjoy complete peace of mind with all Ford Genuine and Ford Licensed Accessories backed by our warranty of 1 year or 100,000 kms, whichever comes first.



Nationwide

Our vast national Ford network means there's a fitment center conveniently located near you. Always up-to-date with the latest technical information and thorough knowledge of the newest products, your local Ford dealership is the perfect place to visit for all your accessory needs.



4X4 ACCESSORIES




Ford has joined forces with ARB to create an exciting range of 4x4 accessories designed for your Next-Gen Ranger. You can choose from a large selection of ARB 4x4 accessories, backed up by Ford warranty, from your local Ford dealership and the range will continue to expand.




Unlock your Next-Gen Ranger's full potential with FordPass



With Ford Connected Vehicles fitted with FordPass Connect Embedded Modems, enjoy the connectivity benefits in the palm of your hand from the FordPass App.

What are the key features?		Connected Vehicle	Non-Connected Vehicle
	Remote Vehicle Lock & Unlock Lock and unlock the doors of your vehicle from virtually anywhere.	<input checked="" type="radio"/>	<input type="radio"/>
	Remote Vehicle Start & Stop Remote start and stop your vehicle from anywhere and cool the interior cabin with the last known climate control setting before driving.	<input checked="" type="radio"/>	<input type="radio"/>
	Vehicle Locator Easily find your vehicle in crowded car parks.	<input checked="" type="radio"/>	<input type="radio"/>

	Vehicle Status Check your fuel level or odometer without having to be in the vehicle.	<input checked="" type="radio"/>	<input type="radio"/>
--	---	----------------------------------	-----------------------

Here is how to set up your FordPass App when you receive your Next-Gen Vehicle

1. Download the app + create account

Download the app from either the Google Play or Apple App store, then create a user account.

2. Add Your VIN

- Upon installation of the app, open it and press **Add Vehicle**.
- It will then ask for your 17-character Vehicle Identification Number (VIN) which is found on the front of the windshield, or in your vehicle delivery documents.
- Press **Next**.

3. Activate Your Next-Gen Vehicle

- FordPass will indicate that your vehicle has been found, and you will be prompted to give it a nickname, such as 'My Ranger'.
- Press **Get Started**.
- Press **Activate Vehicle**.
- Next, you may start your vehicle.
- On the SYNC™ screen, you will be asked to confirm the FordPass Connection. Press **Yes**.
- After this, close your FordPass App and then re-open it.
- If the screen now shows remote feature commands, then you have successfully activated your Next-Gen Vehicle, and have paired it with your FordPass App.

Scan to learn more about FordPass



Next-Gen Ranger Specifications

Model	Wildtrak 4x4	Wildtrak 4x2	Sport 4x4	Sport 4x2	XLT 4x2	XLS 4x2	XL 4x4
Dimensions							
Overall Dimensions (LxWxH)	mm	5,370 x 1,918 x 1,884					5,350 x 1,918 x 1,884
Bed Box Dimensions (LxWxH)	mm	1,564 x 1,584 x 540					
Wheelbase	mm	3,270					
Front Track Width	mm	1,620					
Rear Track Width	mm	1,620					
Ground Clearance	mm	235					
Water Wading	mm	800					
Engine							
Type	2.0L Bi-Turbo Diesel		2.0L Turbo Diesel				
Displacement	cc	1,996					
Maximum Power	PS@rpm	210 @ 3,750	170 @ 3,500				
Maximum Torque	Nm@rpm	500 @ 1,750-2,000	405 @ 1,750-2,500				
Transmission							
Type	10-Speed Automatic		6-Speed Automatic				6-Speed Manual
Fuel Tank Capacity	Liters	80					
Emission Level	Euro 4						
Chassis & Suspension							
Front Suspension	Double Wishbone with Coil Spring and Anti-Roll Bar						
Rear Suspension	Leaf Springs						
Electronic Locking Rear Differential	With	-	With	-			With
Front / Rear Brakes	Front / Rear Ventilated Discs		Ventilated Discs / Drum				
Steering System	Electric Power Assisted Steering (EPAS)						
Wheel Size and Type	18" Alloy				17" Alloy	16" Alloy	16" Steel
Tire	255/65/R18				255/70/R17	255/70/R16	
Exterior							
Front Grille	Unique Wildtrak Paint Accent		Unique Sport Paint Accent		Black with Chrome Garnish	Painted	Black
Headlights	Matrix LED Headlights	LED Multi-Reflector				Reflector	
Adaptive Front Lighting System	With	-					
Daytime Running Lamps	With					-	
Auto On/Off Headlights with Follow Me Home					With		
Fog Lamps	LED				Halogen	-	
Taillights	LED				Reflector		
High-Mounted Stop Lamp	With						
Wipers	Rain-Sensing					Variable Intermittent	
Exterior Mirrors	Power Folding / Power Adjustable / Side Turn Indicators					Manual Folding / Power Adjustable	
Puddle Lamps	With		-				
Side Steps	With						-
Rear Box Steps	With						
Bedliner	With					-	
Roof Rails	With		-				
Mud Flaps	Front and Rear						
Front Tow Hooks	Dual				Single		
Easy-lift Tailgate	With				-		
Interior and Convenience							
Selectable Drive Modes	With						-
Terrain Management System	With	-					
Remote Key	Smart Keyless Entry with Push Button Start				With		
Leather Steering Wheel	With					-	
Instrument Cluster	8" Digital						
Power Windows	Power Windows with One-touch-up /-down Front Windows						
Rear View Mirror	Auto-dimming				Day / Night		
Air Conditioning	Dual-Zone Electronic Automatic Temperature Control		Single-Zone Manual Air Temperature Control				
Auxiliary 12-Volt Power Outlets	x2 (1 st row, and cargo area)		x2 (1 st row and 2 nd row)				
230-Volt Inverter	x2 (2 nd row cabin and cargo area)		-				

Model	Wildtrak 4x4	Wildtrak 4x2	Sport 4x4	Sport 4x2	XLT 4x2	XLS 4x2	XL 4x4
Seating							
Seat Material	Leather and Synthetic Leather with Wildtrak Styling		Leather and Synthetic Leather with Unique Sport Styling		Fabric		
Front	8-Way Power Adjust Driver & 4-Way Manual Adjust Passenger		6-Way Manual Driver & 4-Way Manual Adjust Passenger				4-Way Manual Adjust Driver & 4-Way Manual Adjust Passenger
Rear	Bench Seat with Center Armrest and Fold-up Function				Bench Seat with Fold-up Function		
Audio & Connectivity							
Central Display	12" Colored Portrait Touchscreen		10" Colored Portrait Touchscreen				
Connectivity	SYNC®4A with Wireless Apple CarPlay® & Android Auto™ Compatibility (Voice Commands available with Wildtrak Variants)						
Steering Wheel with Audio / Function Control	With						
Dual USB Ports (Type A & C)	1 st and 2 nd Rows		1 st Row				
Windscreen-mounted USB Port	With				-		
Wireless Charger	With				-		
Speakers	x6						x4
Advanced Driver Assist Technology							
Adjustable Speed Limiter	With				-		
Cruise Control	-	With				-	
Adaptive Cruise Control with Stop & Go and Lane Centering	With	-					
Auto High Beam	With	-					
Autonomous Emergency Braking (AEB) with Pedestrian Detection	With	-					
Pre-Collision Assist	With	-					
Dynamic Brake Support DBS	With	-					
Distance Alert / Distance Indication DA/DI	With	-					
Forward Collision Warning System	With	-					
Evasive Steer Assist	With	-					
Post Impact Braking	With	-					
Lane Departure Warning & Lane Keeping System	With	-					
Blind Spot Information System with Cross-Traffic Alert & Braking	With	-					
360 Degree Camera	With	-					
Reverse Brake Assist	With	-					
Driver Alert System	With	-					
Safety & Security							
Hill Launch Assist & Roll Over Mitigation	With				-		
Hill Descent Control	With	-	With	-			
Electric Parking Brake	With		-				
Airbags	x7 (Driver, Front Passenger, Side, Curtain, Knee)		x6 Airbags (Driver, Front Passenger, Side, Curtain)				
Parking Sensors	Front and Rear	Rear	-				
Rear View Camera	-	With				-	
ABS + EBD	With				With		
ESP with Traction Control System	With Electric Brake Booster	With				-	
Security Alarm System	With				-		
Immobilizer	With				With		
Child Seat ISOFIX Anchor Points	With				With		

Available Colors



Arctic White
Except for Wildtrak



Absolute Black



Luxe Yellow
Exclusive for Wildtrak



Snowflake White Pearl
Exclusive for Wildtrak



Aluminum Metallic
Except for Sport



Meteor Grey
Except for XL



Blue Lightning
Exclusive for Sport and XLT



Sedona Orange
Exclusive for Wildtrak and Sport



Under your New Vehicle Limited Warranty, Bumper-to-Bumper coverage begins on the warranty start date (the date the vehicle was delivered to the customer or put into use) and lasts for five (5) years or 150,000 kilometers, whichever comes first.

Premium Extended Warranty

The Ford Premium Extended Warranty is the most comprehensive Service Plan Protection fully backed by Ford Group Philippines. It covers the parts and labor to repair thousands of key components-engine, transmission, steering, electrical and more. Apart from the complimentary 5-Year Warranty that comes with our Next-Gen Ford vehicles, options to extend the plan to an additional one to two years are also available.

Emergency Roadside Assistance

All Ford vehicles come with standard 3-year Roadside Assistance

 www.facebook.com/FordPhilippines/

 [@fordphilippines](https://www.instagram.com/fordphilippines)

Please contact your local Ford Dealer
for more information or visit our website at
www.ford.com.ph

Scan the QR Code to reserve your Next-Gen
Ford Ranger today



This brochure is designed to provide you with a general introduction to the Ford products referred to, and should be read in conjunction with the latest specification sheet. Image and illustrations are for information purposes and are indicative only. Ford Group Philippines reserves the right, at any time, at its discretion, and without prior notice, to discontinue or change the features, designs, materials, colors and other specifications and the prices of its products, and to either permanently or temporarily withdraw any such products from the market without incurring any liability to any prospective purchaser or purchasers. Please contact your local Ford Dealer for the latest information with respect to features, specifications, prices, optional equipment and availability before deciding to place an order.