



GENESIS

2021 GENESIS G90





WE HAVE DESIGNS ON THE FUTURE.

At Genesis, we're not bound by the past when looking to the future. As a young luxury brand, we see what's possible through new eyes, wide-open with a sense of wonder.

It's led us to invent a design language of our very own. Our inspiration? The Genesis emblem, where boldness takes flight. The 2021 G90 bears this new signature of the Genesis brand identity: A bold crest grille framed by narrow, wing-like quad lighting.

It's symbolic of where we are taking luxury. By fusing advanced technologies with smart design, Genesis is creating world-class levels of performance, safety and comfort.

In a few short years, we've transformed the very idea of a luxury automotive brand – all without sacrificing quality. According to J.D. Power, Genesis is the #1 Ranked Premium Brand for Long-Term Quality in 2020. And for the fourth year in a row, J.D. Power has ranked Genesis as the Best Premium Brand in Initial Quality in the U.S. in 2020.¹

It's all supported by the Genesis Experience, a suite of innovative owner benefits designed around how you actually live: In the future, not the past.







THE LOOK OF MODERN LUXURY.

Confident. Magnetic. The Genesis G90 is a powerful presence – a stunning modern sculpture formed of steel, glass and imagination.

Its face is unmistakably bold. The G90's front styling greets you with the penetrating gaze of its distinctive quad lamps. The diamond-shaped pattern of its G-Matrix grille is accentuated by intersections that sparkle like jewelry.

That same effect is echoed in the taillights – a refrain of the quad lamp design theme. The G-Matrix pattern continues inside the cabin – you'll see it in the stitching of the supple Nappa leather seats.

As the flagship sedan of Genesis, the G90 embodies substance as well as style. Remarkable new features like Dynamic Voice Recognition and Personalized Remote Start² may have you wondering whether Genesis is a car company...or a tech company?



POWER TAKES MANY FORMS.

The Genesis G90 lets you define luxury on your terms. What's your preference – the 3.3T Premium, with its 365-hp 3.3L Twin-Turbo V6?³ Or the 5.0 Ultimate, with its 420-hp 5.0L V8?³ Either way, power transfers to the pavement through an 8-speed automatic transmission.

Of course, luxury sedan performance is not only about quantity – it's defined by the quality of the experience. Which is why the G90 features Intelligent Drive Mode with Smart Shift. Select your preferred driving dynamic: Comfort, Sport, Eco or Custom. Each mode adapts the car's transmission mapping and throttle responsiveness, steering, suspension and available All Wheel Drive in real time to create a precisely personal driving experience. The Custom mode even includes a new Rear Comfort Drive Mode setting that helps rear passengers feel more relaxed, especially during acceleration.

The G90's available All Wheel Drive delivers a rear-wheel-drive bias when road conditions are good. When conditions become slippery, it instantly transfers power to the wheels needing traction.

As you are driving, data sensors linked to the G90's standard Genesis Adaptive Control Suspension are also reacting to the road surface, signaling your car's Continuous Damping Control to micro-adjust the shocks and preserve a smooth ride.







SAFETY FROM ALL ANGLES.

As a driver, you try to anticipate what could happen all around you. In the G90, your alert levels are elevated by an array of advanced sensors, cameras and radar technologies. If the potential for a collision is detected ahead, your G90 warns you and assists with braking or steering if necessary to help avoid an accident. If a vehicle is detected in your blind spot when changing lanes, your G90 helps nudge you back into your lane. And if something threatens to intrude while you're backing out of a parking space, your G90 is quick to warn you. If necessary, it helps apply braking for you, too. No doubt, the Genesis G90 has got your back.



FORWARD THINKING, FAST REACTING

Your G90 can help detect pedestrians, cyclists and slowed or stopped vehicles ahead of you. The driver is alerted to the potential for a collision, and braking is automatically applied. If the potential for a collision is detected with an oncoming vehicle in the opposing lane, the driver is alerted and steering assist is activated.⁴



EYES WIDE OPEN

A Blind-Spot View Monitor provides the G90 driver with video footage from either side of the car. While changing lanes with the turn signal on, a rear view of the adjacent lane is projected on your G90's center instrument cluster, revealing blind spots not typically seen by traditional side mirrors.⁵



GOT YOUR BACK

A new Parking Collision-Avoidance Assist feature uses four rear ultrasonic sensors and a rearview camera to identify obstructions behind your car. If it detects an object as you're backing out of a parking space, it warns you. If no action is taken by the driver, the G90's brakes are applied to help prevent a collision.⁶

ARTIFICIAL INTELLIGENCE. NEW REALITIES.

When you're young like Genesis, you approach things with a sense of possibility. We wondered, for example, if the G90 could gauge how the vehicle ahead of you is driving – and adjust its Smart Cruise Control to maintain a safe distance.⁷ Could it also adjust its cruise control to posted speed limits automatically using GPS and map data? Or slow down automatically when it senses you're approaching a curve on the highway?

We wondered if there was a way for your car to automatically adjust your steering to help keep you centered in your driving lane – even if the lane markings are difficult to detect.⁸ And what if, when you've pulled up to the curb to park, your car could alert you if another vehicle is detected to be approaching from behind as passengers prepare to exit on the street side? In the G90, these possibilities and more are now realities.



2020 Genesis G90⁹



CAREFREE HIGHWAYS

Highway Driving Assist helps keep your G90 in the center of its lane. It also maintains a set cruise control speed while keeping a safe distance from vehicles in front of you, automatically adjusts for changing speed limits and automatically reduces your speed when it detects you're approaching a curve in the road on highways.¹⁰



CLOSE CALLS, FARTHER APART

Serving as an extra set of eyes when you are changing lanes, Blind-Spot Collision-Avoidance Assist continuously monitors your flanks. If a vehicle is detected in your blind spot while you attempt a lane change, it automatically applies left or right front braking to help nudge you safely back into your lane.¹¹



REAR GUARD

Backing out of a parking space and wondering whether there's cross traffic coming your way? Rear Cross-Traffic Collision-Avoidance Assist helps warn you of another vehicle approaching from the side while you're exiting a parking space in reverse gear. If necessary, the G90 applies braking automatically to help prevent a collision.¹²



360-DEGREE VIEWS

To aid you when parallel parking, four cameras and zoom in/out functionality on the G90's Surround View Monitor offer expanded views of your perimeter.¹³ A forward-view camera assists with tight alleys and parking areas with poor visibility, while a rearview camera with guidelines helps track your steering path in reverse.



LIGHT YEARS AHEAD

Yet another forward-thinking technology on the G90: The car's signature quad LED headlights are equipped with a High Beam Assist feature that automatically switches your headlights from high to low beams when the car's front camera detects oncoming or leading vehicles on the road ahead.



YOUR ATTENTION PLEASE

Driver Attention Warning helps detect potential driver fatigue or distraction and issues visual and audio alerts suggesting you take a break.¹⁴ After parking, Safe Exit Assist issues an alert when a vehicle is detected to be approaching from behind, letting the driver know it may not be safe for passengers to open the street-side door.¹⁵

LUXE LIVES HERE.

The door of your Genesis G90 unlocks at the press of a button on the handle, welcoming you into your new realm. Settle in and soak up the ambiance of an interior crafted from authentic materials. Ash and walnut burl wood trims are processed with a natural, open-pore and soft matte finish. The grilles for the Lexicon® premium audio system door speakers are stainless steel. And many of the switches on the instrument panel are chrome-plated.

Nappa leather covers not just the seats, but the center console as well. And that signature G-Matrix pattern? It's quilted into the seat cushions and seatbacks offered in your choice of five colors. You can illuminate your G90's elegant interior with a variety of ambient mood lighting choices, too.

Thanks to a combination of sound-insulating acoustic glass, triple-sealed doors and other measures, the G90 cabin is profoundly quiet. It's also refreshingly clean – air quality is monitored by a segment-first CO₂ Sensor.¹⁶ If elevated levels of carbon dioxide are detected, the ventilation system automatically refreshes the cabin air to help reduce driver fatigue.









THE SEATS OF POWER.

Your luxury sedan is your oasis – the one place you should feel instantly relaxed. Which is why every G90 comes standard with an exceptionally comfortable and supportive 22-way power driver seat. Rest assured, the seat's comfort isn't based on cosmetics. It's based on ergonomic science, earning certification from Aktion Gesunder Rücken (AGR), renowned for rating products based on how well they support overall back comfort, health and safety.

Smart Posture Care technology recommends and sets the most ergonomic seating position for the G90's driver based on an analysis of his or her physical profile data. The steering wheel, outside mirror and Heads-up Display are also adjusted automatically.

Prefer being a passenger? In the G90 5.0 Ultimate, the rear cabin features a 12-way power-adjustable left rear seat and an AGR-certified 14-way power right rear seat. The right rear seat includes a one-touch relax mode that reclines to your preferred seating position. Both rear-seat passengers are entertained by dual 10.3" HD displays that tilt and adjust for optimal individual viewing.

A three-zone climate control system gives rear seat passengers even more control over their comfort. Turn on the soothing heat, press the power recline switch, raise the power rear window and rear side-window sunshades, and your tranquility is complete.



WE HEAR YOU.

Ready to start having a good conversation with your car? We thought so. That's why Genesis enlisted SoundHound, one of the leaders in voice recognition technology, to help develop our new Dynamic Voice Recognition. It's a breakthrough in convenience, letting you activate climate controls, select SiriusXM channels, open the trunk, close windows and more using a natural, conversational tone instead of truncated voice commands.

You can even ask your G90 questions like 'How is Amazon's stock doing today?' or 'What is the chance of rain in Manhattan?' and quickly hear a response.¹⁷ And that's only the beginning of the innovative ways the G90 responds to your needs. Up on the large 12.3" infotainment screen, the G90's navigation system adds a new Connected Routing feature that delivers faster cloud-based routing with the latest traffic and road conditions.¹⁸





AUTO COMFORT CONTROL

When you first enter your G90, a certain level of heat is initially needed to warm the steering wheel and seats. To keep you comfortable as your trip progresses, Auto Comfort Control automatically adjusts those levels based on factors like outside temperature, sunlight intensity and cabin temperature control settings.



REAR SEAT CONTROLS

The G90 5.0 Ultimate's rear center armrest controls let you custom-fit the 14-way right rear seat and 12-way left rear seat. Recline the seat back, adjust the lumbar support, set the headrest height and angle, and more. An Integrated Memory System recalls two position settings at the touch of a button.



PREMIUM HD NAVIGATION SYSTEM

Use Genesis Connected Services to leverage the power of your smartphone and find destinations or points of interest you can send directly to your G90's navigation system.¹⁹ Real-time traffic flow and incident data from a subscription-free HD Radio™ service is easy to see at a glance, thanks to a wide 12.3" high-definition monitor.



POWER HANDS-FREE SMART TRUNK

Walking up to your G90 with your hands full? A power hands-free smart trunk opens automatically for easy access to the car's spacious cargo area. It works by detecting the key fob in your pocket or purse. Simply wait by the trunk for a few seconds, and it pops open.²⁰



POWER TO THE PEOPLE

A wireless device charger and front/rear USB charge ports keep devices powered up when you're on the go.²¹ Android Auto™ and Apple CarPlay® make it easy to sync your smartphone's key features onto the G90's large infotainment display.²²



HEADS-UP DISPLAY

Like a fighter jet, the G90 helps its pilot process driving information quickly. A color Heads-up Display projects vehicle speed, speed limits, navigation turns and safety system alerts onto the windshield directly in front of the driver for at-a-glance decision making at speed.

GENESIS CONNECTED SERVICES

With the Genesis Intelligent Assistant app's Personalized Remote Start feature, you can remotely start your car's engine and climate controls, recall a setting for the Integrated Memory Seat, warm up the heated seats and activate the front defroster – all with a single touch of your mobile device or a voice command to your Amazon Echo® or Google Home™ device.²³ Wondering if you left your G90's doors unlocked or a window open? Check your smartphone app.



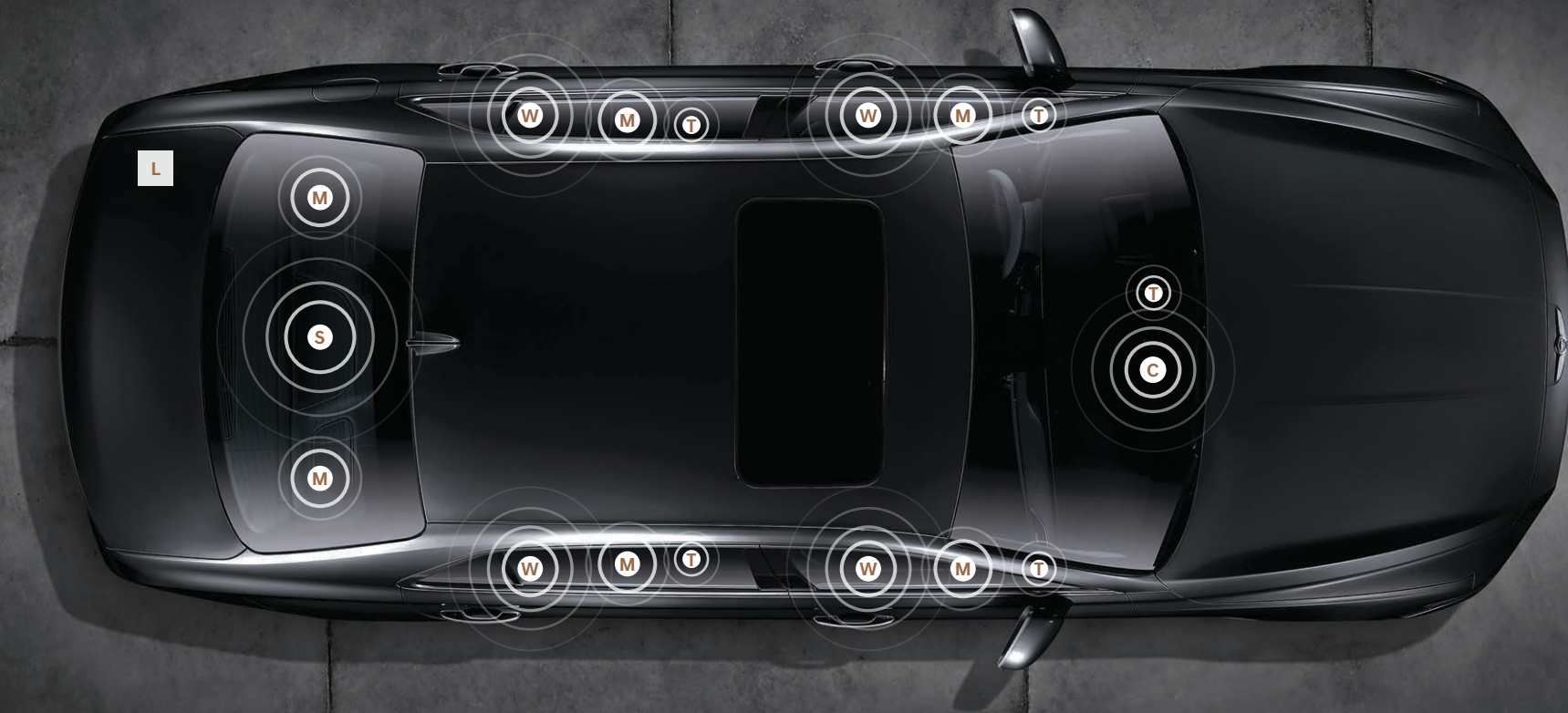
The app also lets you check your vehicle's fuel level and includes a valet alert to help you keep tabs on your G90. Sync the app with your calendar of events, and it can send timely updates and recommendations to your phone in preparation for upcoming drives. These are just some of the ways Genesis Connected Services (complimentary for your first three years of ownership) act as your conduit to the information, assistance and services you want and need on the go. Visit [genesis.com](https://www.genesis.com) for details.²⁴

HOW DOES THIS SOUND?

With 17 speakers strategically placed inside of the cabin, the G90 sonic experience has to be heard to be believed. Genesis has partnered with Lexicon®, whose advances in audio technology are so respected, they've earned a Grammy award. Each high-efficiency speaker is perfectly

tuned to your G90's acoustic signature for an immersive listening experience at every seating position. All to ensure that in the G90, you don't just hear the power of the music – you feel it. No matter where you're seated, Lexicon's high-performance 12-channel amplifier makes

the boundaries of your vehicle seemingly disappear. QuantumLogic® Surround Sound technology identifies and re-authors individual voices and instruments into a precise multi-channel soundstage, resulting in a wider and more dynamic listening experience.



17-SPEAKER LEXICON® QUANTUMLOGIC® SURROUND SOUND AUDIO SYSTEM

- (C) Coaxial dash-mounted midrange speaker
- (W) Door-mounted woofers

- (M) Midrange surround sound speakers
- (L) Lexicon 12-channel digital external amplifier

- (S) Subwoofer
- (T) Tweeters

THE GENESIS EXPERIENCE

Our thoughtfully crafted suite of owner benefits are designed to elevate not just the way you drive, but the way you live. It reflects our profound commitment to meeting your needs and wants precisely. And while we can't help you make more of it, we can certainly help you make the most of your precious time.



TRUE LUXURY ENHANCES YOUR ENTIRE EXPERIENCE. BOTH ON AND OFF THE ROAD.

COMPLIMENTARY SERVICE VALET

You may never need to bring your vehicle to a Genesis service center. Allow your Genesis retailer to pick up your G90 and deliver a courtesy replacement vehicle, perform any required maintenance, then return your car to your location...all while you enjoy more pleasurable pursuits. Complimentary for 3 years or 36,000 miles.

COMPLIMENTARY SCHEDULED MAINTENANCE

Enjoy a worry-free Genesis ownership experience with Complimentary Scheduled Maintenance for 3 years or 36,000 miles, whichever comes first. Includes oil changes and tire rotations, as well as select wear items like wiper blades, brake pads and alignments as needed.

24/7 ENHANCED ROADSIDE ASSISTANCE

Peace of mind is another essential luxury. Should your travel plans take an unexpected turn, five-year complimentary Roadside Assistance provides tire changes or transportation to the nearest Genesis retailer. Reimbursement for an overnight stay is included if needed.

GENESIS CONNECTED SERVICES

Every new G90 includes three years of complimentary Genesis Connected Services. It's an exclusive suite of safety, car care, guidance and remote features that help keep you connected to your digital life and the things you need on the go.

SIRIUSXM ALL ACCESS SATELLITE RADIO

Complimentary for your first three months, SiriusXM All Access offers one of the widest varieties of entertainment anytime, anywhere. Enjoy every channel available on your satellite radio – including personalized stations powered by Pandora® – and listen in your G90 or on your computer, smartphone or tablet with the SiriusXM app.²⁵

NAVIGATION AND MULTIMEDIA UPDATES

To ensure you're accessing up-to-date driving directions, your G90 navigation system comes with annual map updates – complimentary for three years during routine maintenance visits with Genesis. Over-the-air updates are available through Genesis Connected Services.²⁶

2021 GENESIS G90 FEATURES

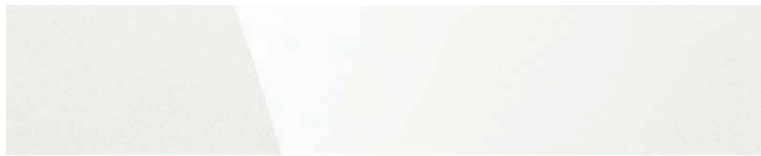
MECHANICAL	3.3T	5.0
3.3L Twin-Turbo GDI V6 engine (365 HP/376 lb-ft) ³	●	–
5.0L GDI V8 engine (420 HP/383 lb-ft) ³	–	●
8-speed automatic transmission with SHIFTRONIC® and paddle shifters	●	●
Shift-by-Wire	●	●
Rear Wheel Drive	●	●
All Wheel Drive	○	○
Genesis Adaptive Control Suspension with Electronic Damping Control	●	●
Intelligent Drive Mode with Smart Shift	●	●
Electric speed-sensing power steering with Variable Gear Ratio	●	●
Ventilated front and rear disc brakes	●	●
Electronic Parking Brake with Automatic Vehicle Hold	●	●
SAFETY	3.3T	5.0
Lane Keeping Assist and Lane Following Assist	●	●
Highway Driving Assist	●	●
Blind-Spot Collision-Avoidance Assist	●	●
Blind-Spot View Monitor	●	●
Surround View Monitor	●	●
Driver Attention Warning	●	●
Safe Exit Assist	●	●
High Beam Assist	●	●
Forward Collision-Avoidance Assist with Pedestrian and Cyclist Detection	●	●
Parking Distance Warning	●	●
Parking Collision-Avoidance Assist – Rear	●	●
Rear Cross-Traffic Collision-Avoidance Assist	●	●
Vehicle Stability Management	●	●
Electronic Stability Control System with Traction Control System	●	●
ABS with Brake Assist and Electronic Brake-force Distribution	●	●
10 airbags: Advanced dual front airbags, front & rear seat-mounted side-impact airbags, driver & front passenger knee airbag, roof-mounted side curtain airbags	●	●
Tire Pressure Monitoring System with individual tire indicators	●	●
EXTERIOR	3.3T	5.0
19" alloy wheels	●	●
Chrome door handles and lower side molding	●	●
Windshield wiper de-icer and rain-sensing wipers	●	●
Auto-defogging windshield with humidity sensor	●	●
Solar control windows with acoustic-laminated double soundproof glass	●	●
Hands-free power smart trunk with auto open	●	●
Dual power-folding heated side mirrors	●	●
Genesis logo approach lights	●	●
Automatic auto-leveling LED headlights	●	●
LED Daytime Running Lights	●	●
Power door closure	●	●

INTERIOR	3.3T	5.0
3-zone automatic temperature control and air quality system with CO ₂ sensor	●	●
Proximity Key entry with push button start	●	●
Power windows with auto-down/up and pinch protection	●	●
Power rear window and rear side-window sunshades	●	●
Auto-dimming rearview mirror with compass and HomeLink®	●	●
Genuine matte-finish wood interior trim	●	●
Leatherette-wrapped dash and door trim with piping	●	●
Electroluminescent gauge cluster with 7" color LCD multi-information display	●	●
Heated and leather-wrapped power tilt-and-telescopic steering wheel	●	●
Premium Nappa leather seating surfaces	●	●
Heated and ventilated front seats and heated rear seats	●	●
22-way power driver seat with power lumbar, cushion extension and shoulder & side bolster adjustment	●	●
16-way power front passenger seat with power lumbar and shoulder & side bolster adjustment	●	●
Anti-whiplash front head restraints with power controls	●	●
Integrated Memory System for front seats, outside mirrors and steering column	●	●
Heads-up Display	●	●
Navigation-based Smart Cruise Control with Auto Curve Slowdown	●	●
40/20/40 power reclining outboard rear seats	–	●
14-way power right-rear and 12-way power left-rear seats with power lumbar & shoulder adjustment and right-rear seat cushion tilt	–	●
Center armrest with dual cupholders and control console	●	●
Ventilated rear seats with power adjustable head restraints	–	●
Integrated Memory System for rear outboard seats	–	●
Rear-seat illuminated vanity mirrors	–	●
Interior ambient lighting (adjustable – 7 colors)	●	●
Active Sound Design	●	●
Microfiber suede headliner	●	●
Genesis front and rear door sill plates	●	●
Power tilt-and-slide sunroof with one-touch open/close	●	●
MULTIMEDIA	3.3T	5.0
12.3" HD navigation system with HD Traffic (subscription-free)	●	●
17-speaker Lexicon® QuantumLogic® Surround Sound system with 12-channel digital external amplifier	●	●
Rear-seat entertainment system with dual 10.3" HD displays	–	●
SiriusXM® Satellite Radio/HD Radio™/Apple CarPlay®/Android Auto™	●	●
Driver Information System multimedia controller	●	●
Bluetooth® hands-free phone system with audio streaming	●	●
Genesis Connected Services (3 years complimentary)	●	●
Wireless device charging	●	●
Front and rear USB charge ports / MP3 auxiliary input jack	●	●
CD/DVD player	●	●

● Standard ○ Optional – Not Available



2021 GENESIS G90 EXTERIOR COLORS



Uyuni White



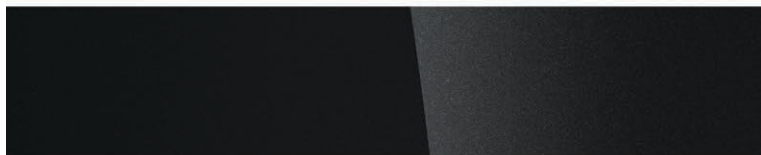
Savile Silver



Himalayan Gray



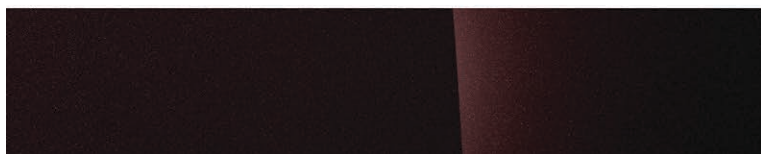
Adriatic Blue



Vik Black



Gold Coast Silver



Porto Red
Limited availability

2021 GENESIS G90 WHEELS AND TIRES



19" CHROME ALLOY WHEELS
G90 3.3T PREMIUM & 5.0 ULTIMATE

- Front: 19 x 8.5J
- Rear: 19 x 9.5J
- Front: P245/45R19 all-season tires
- Rear: P275/40R19 all-season tires



19" MULTI-SPOKE ALLOY WHEELS
G90 3.3T PREMIUM & 5.0 ULTIMATE

- Front: 19 x 8.5J
- Rear: 19 x 9.5J
- Front: P245/45R19 all-season tires
- Rear: P275/40R19 all-season tires

2021 GENESIS G90 INTERIOR COLORS



Black/Black Leather
and Gray Ash Wood



Black/Beige Leather
and Black Ash Wood



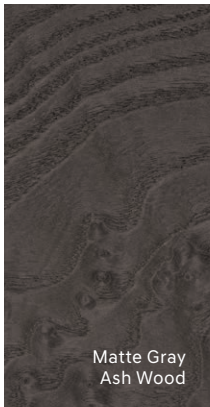
Dark Brown/Havana Brown Leather
and Olive Ash Wood



Dark Brown/Indigo Blue Leather
and Gray Ash Wood



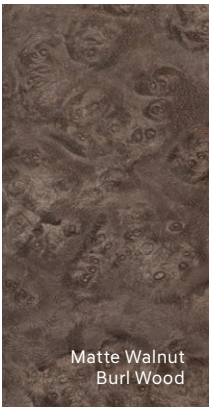
Havana/Beige Leather
and Walnut Burl Wood



Matte Gray
Ash Wood



Matte Olive
Ash Wood



Matte Walnut
Burl Wood



Matte Black
Ash Wood

2021 GENESIS G90 DIMENSIONS

EXTERIOR

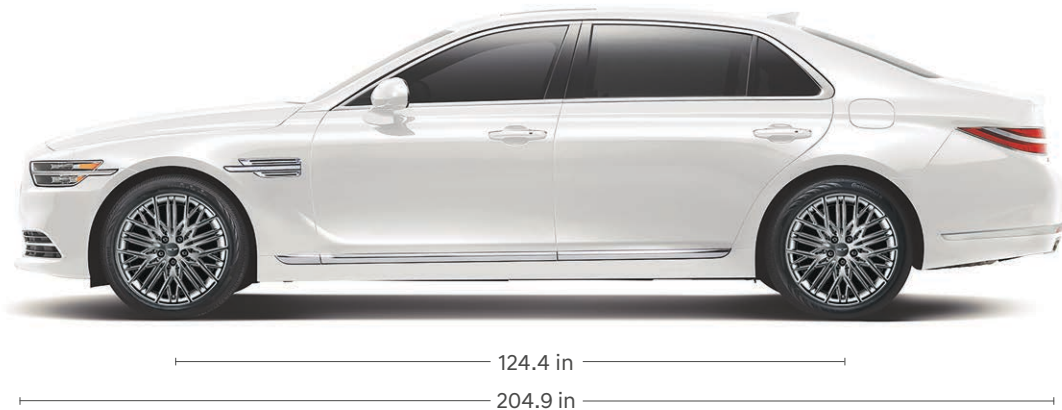
	G90
Wheelbase	124.4 in
Overall Length	204.9 in
Overall Width (with door handles – excludes mirrors)	75.4 in
Overall Height	58.9 in
Minimum Ground Clearance	5.1 in

EPA FUEL ECONOMY

	3.3T PREMIUM	5.0 ULTIMATE
Rear Wheel Drive (City/Highway/Combined) ²⁷	17/24/19 MPG	16/24/19 MPG
All Wheel Drive (City/Highway/Combined) ²⁷	17/24/20 MPG	16/23/18 MPG
Fuel Tank Capacity	21.9 gal	21.9 gal

INTERIOR

	G90
Headroom – front/rear	41.1/38.0 in
Legroom – front/rear	46.3/37.8 in
Shoulder Room – front/rear	59.1/57.9 in
Hip Room – front/rear	56.5/55.0 in
Passenger Compartment	113.2 cu ft
Cargo (Trunk)	15.7 cu ft



GENESIS BRAND WARRANTY

POWERTRAIN LIMITED WARRANTY

10 YEARS / 100,000 MILES

NEW VEHICLE LIMITED WARRANTY

5 YEARS / 60,000 MILES

ANTI-PERFORATION WARRANTY

7 YEARS / UNLIMITED MILES

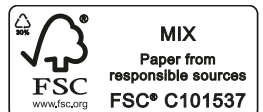
FOOTNOTES

¹The VDS study is an evaluation of three-year-old vehicle dependability based on 2017 model-year vehicles. For J.D. Power 2020 U.S. award information, visit jdpower.com/awards for more details. ²Requires an active Genesis Connected Services subscription with Remote package. ³Horsepower ratings with premium fuel. ⁴Forward Collision-Avoidance Assist (FCA) with Pedestrian and Cyclist Detection helps detect pedestrians and cyclists, but not in all conditions. FCA is designed to assist drivers to avoid, or reduce the severity of, collisions with cars that have slowed or stopped in front of them. The system is not designed to detect certain stationary objects such as trees or poles, and may not detect all vehicles, pedestrians and cyclists under certain road, weather and vehicle conditions. It is a supplemental assist and does not replace the need for extreme care and attention by the driver. FCA may not stop the vehicle completely and will not avoid all collisions. The driver is responsible for being attentive and maintaining control of the vehicle, and should not wait for the system's alerts before braking as there may not be sufficient time to brake safely. See Owner's Manual for further details and limitations. ⁵The Blind-Spot View Monitor (BVM) assists the driver in changing lanes by providing a live view of the blind spots on either side of the vehicle and sounding an audible alert if another vehicle is detected. The turn signal must be activated, and other system limitations apply. Do not rely exclusively on BVM. It is the driver's responsibility to be aware of the surroundings and ensure it is clear before changing lanes or directions. See Owner's Manual for details and limitations. ⁶Parking Collision-Avoidance Assist (PCA-R) can alert the driver of a potential hazard by providing an audible warning and, if deemed necessary, applying light braking. PCA-R is active when the vehicle is in reverse gear and operating at low speeds. Never rely exclusively on PCA-R when exiting a parking space, as it is not a substitute for attentive driving. Always look over your shoulder and use your mirrors to confirm rear clearance. There are limitations to the function, detection, range and clarity of the system. PCA-R may not function correctly if one or more of the parking sensors is damaged, dirty or covered, or if weather conditions (heavy rain, snow or fog) are interfering with the sensor operation. See Owner's Manual for further details and limitations. ⁷Smart Cruise Control (SCC) is not a collision-avoidance or warning device. SCC is for highway use only and should not be used in poor weather, heavy or varying traffic, or on winding or slippery roads. The driver remains responsible for slowing or stopping the vehicle to avoid a collision. SCC initiates a full stop when the traffic ahead stops, and reengages if the vehicle ahead moves forward within three seconds. See Owner's Manual for details and limitations. ⁸Lane Following Assist (LFA), when actively engaged with Smart Cruise Control or Highway Driving Assist, can help keep the vehicle centered in its lane when the lane markings are clearly visible on the road. LFA will not work under all circumstances and will not prevent loss of control. LFA is a supplemental assist, and does not replace the need for extreme care and attention by the driver. See Owner's Manual for details and limitations. ⁹To qualify for 2020 TOP SAFETY PICK+, a vehicle must earn good ratings in the driver-side small overlap front, passenger-side small overlap front, moderate overlap front, side, roof strength and head restraint tests. It also must earn an advanced or superior rating for vehicle-to-vehicle and vehicle-to-pedestrian front crash prevention and come with standard acceptable- or good-rated headlights. ¹⁰Highway Driving Assist (HDA), when used in conjunction with Lane Following Assist and Smart Cruise Control, is for highway use only and can help keep your vehicle centered in its lane while maintaining a safe distance from other vehicles ahead when the lane markings are clearly visible on the road. HDA should not be used in poor weather, heavy or varying traffic, or on winding or slippery roads. HDA will not work under all circumstances and will not prevent loss of control. The driver remains responsible to slow or stop the vehicle to avoid a collision. See Owner's Manual for details and limitations. ¹¹Blind-Spot Collision-Avoidance Assist (BCA) warns the driver of other cars in the blind spot region. If BCA detects an unsafe lane change being attempted, it applies braking on the opposite side of the attempted lane change to help avoid a collision. There are limitations to the function, range, detection and clarity of the system. It will not detect all vehicles or objects in the blind spot and may not operate if sensors are obscured in any way. Do not rely exclusively on BCA. BCA is a supplemental system, and it is the driver's responsibility to exercise caution when changing lanes. Refer to your Owner's Manual for details and limitations. ¹²Rear Cross-Traffic Collision-Avoidance Assist (RCCA) is designed to notify drivers of approaching

cross traffic behind their vehicle. When another vehicle is detected while you are backing out of a parking spot, it provides audible and visual display warnings and helps apply braking if it senses a collision is imminent. RCCA is active when the vehicle is in reverse gear and backing at a speed less than 6 mph. It only engages during the first activation of reverse gear from park and may not detect all vehicles, depending on the size, angle, distance and speed of the other vehicle. Never rely exclusively on RCCA. Always look over your shoulder and use your mirrors to confirm rear clearance. There are limitations to the function, detection, range and clarity of the system. See Owner's Manual for details and limitations. ¹³The Surround View Camera System (SVCS) is a parking support system. SVCS cannot completely eliminate blind spots, may not detect every object and does not warn of moving objects. Always check your surroundings before moving your vehicle. See Owner's Manual for details and limitations. ¹⁴Driver Attention Warning (DAW) is only a warning to inform the driver of a potential lack of attention or drowsiness. It does not detect and provide an alert in every situation. It is the driver's responsibility to remain alert at all times. See Owner's Manual for details and limitations. ¹⁵When your vehicle is parked, Safe Exit Assist (SEA) can alert occupants planning to exit if a vehicle is detected to be approaching from behind. When Child Locks are active, SEA helps prevent the rear doors from opening if a vehicle approaching from behind is detected. SEA is not a substitute for attentive driving. See Owner's Manual for details and limitations. ¹⁶Claim based on comparison of specifications on manufacturer websites. ¹⁷An active Genesis Connected Services (GCS) subscription is required for the web search function to operate. Vehicle commands do not require a GCS subscription. ¹⁸Connected Routing helps drivers access the latest traffic and road conditions. It requires an active Genesis Connected Services subscription with Guidance package and a wireless connection. See Owner's Manual for further details and limitations. ¹⁹Requires active Genesis Connected Services subscription with Guidance package. ²⁰The smart trunk will open when your Proximity Key is within 40 inches of the detection area for at least 3 seconds. Radio transmitters and other vehicle smart keys may interfere with the normal operation of this feature. See Owner's Manual for further details and limitations. Always close your trunk before operating vehicle. ²¹Qi wireless charging function is based on smartphone compatibility and/or specific accessory cases. ²²Android Auto requires the Android Auto app on Google Play and an Android-compatible smartphone running Android 5.0 Lollipop or higher. Google, Android, Android Auto, Google Play and other marks are trademarks of Google Inc. Apple CarPlay works with iPhone 5 and later models running the latest version of iOS 7.1 and above. Apple is a registered trademark of Apple Inc. ²³Remote features are subject to adequate cellular coverage, signal strength and battery power, and only available in the 50 United States. You must be an active subscriber or within the initial free-trial period to receive Genesis Connected Services. Amazon, Alexa and all related logos and motion marks are trademarks of Amazon.com, Inc. or its affiliates. Google Home and Google Assistant are trademarks of Google Inc. ²⁴Genesis Connected Services is complimentary for 3 years and requires an active subscription agreement subject to the Connected Services Terms and Conditions. Three-year term starts from the new vehicle date-of-first-use and is available for new 2021 model year vehicle purchases and leases, as well as transferable to subsequent owners subject to the Terms and Conditions. Only use Genesis Connected Services and corresponding devices when safe to do so. Cellular and GPS coverage is required. Features, specifications and fees are subject to change. For more on details and limitations, visit genesis.com or an authorized retailer of Genesis branded products. ²⁵All SiriusXM services require a subscription sold separately, or as a package, by Sirius XM Radio Inc. after the trial period has elapsed. The subscription plan you choose will automatically renew, and you will be charged according to your chosen payment method at then-current rates. Fees and taxes apply. To cancel, you must call SiriusXM at 1-866-635-2349. See SiriusXM Customer Agreement for complete terms at siriusxm.com. All fees and programming subject to change. Satellite and outside-the-car lineups vary slightly. Sirius, XM, SiriusXM and all related marks and logos are trademarks of Sirius XM Radio Inc. ²⁶Over-the-air updates require a Genesis Connected Services Guidance package subscription. ²⁷EPA estimates for comparison only. Your actual mileage will vary with options, driving conditions, driving habits and vehicle condition.

Genesis Experience Notes: Genesis Service Valet is for 2021 model year vehicles for maintenance for 3 years/36,000 miles and for warranty repairs. Coverage area varies by retailer. Mileage and ownership limitations may apply. Genesis reserves the right to change program without notice. Exclusions may apply. Genesis Complimentary Maintenance is for 2021 model year vehicles for factory-recommended scheduled maintenance for 3 years/36,000 miles. Ownership limitations may apply. Genesis reserves the right to change program without notice. Exclusions may apply. Multimedia and Navigation Map Care updates are available annually for 2021 model year vehicles for 3 years after purchase with a regularly scheduled maintenance appointment. Availability timing of software updates may vary. Ownership limitations may apply. Genesis reserves the right to change program without notice. Exclusions may apply. Genesis Connected Services are available for 3 years complimentary for 2021 model year vehicles. Enrollment is required. Ownership limitations may apply. Genesis reserves the right to change program without notice. Exclusions may apply. SiriusXM® audio trial is 90 days. Ownership limitations may apply. Genesis reserves the right to change program without notice. Exclusions may apply. Roadside Assistance is complimentary for 5 years/unlimited miles for 2021 model year vehicles. Mileage and ownership limitations may apply. Genesis reserves the right to change program without notice. Exclusions may apply. See your Genesis retailer for details on any of the programs or services listed here.

See your Genesis retailer for LIMITED WARRANTY details. Fuel economy estimated by EPA for comparison only. Mileage may vary. While the information contained in this brochure was correct at the time of printing, specifications and equipment can change. Feature comparisons based on competitor information available at the time of printing. No warranty or guarantee is being extended in this brochure, and Genesis Motor America reserves the right to change product specifications and equipment at any time without incurring obligations. Some vehicles are shown with optional equipment. Specifications apply to U.S. vehicles only. Please contact your retailer of Genesis branded products for current vehicle specifications. As part of our commitment to a responsible environment, this brochure is printed on Genesis Eco Bright White paper certified by the Forest Stewardship Council® FSC® certification helps ensure that the highest social and environmental standards are met in the making of the paper we use, contributing to conservation, responsible management and community-level benefits for people near the forests. Visit genesis.com or our social media sites.



©2020 GENESIS NP020G2021D



GENESIS