

1982 PLYMOUTH

HORIZON



1982 PLYMOUTH HORIZON... THE AMERICAN WAY TO GET YOUR MONEY'S WORTH.



Since 1978, over 1,000,000 American families have taken to the road in Chrysler Corporation's remarkable front-wheel economy cars. These roomy little travelers have always offered surprising ride and comfort for a family of five, plus the convenience and versatility of four doors and a full-width hatchback. No wonder that over the years Horizon has proven to be an equally outstanding

success in resale value. There are a lot of good reasons for all of Horizon's impressive achievements.

First, all Horizons feature front-wheel drive which provides for more overall interior space by placing major drive components up front and out of the way. It also lowers overall weight by eliminating the rear drive shaft and other heavy drive train components. So

Horizon is able to seat five in comfort, and utilize engine power more effectively while delivering excellent traction, maneuverability, and fuel economy.

In fact, a special 1982 Miser model is rated at 35 EPA EST MPG,* 52 estimated highway (see pages 4 and 5 of this catalog for details).

Check into our 1982 Custom model if you like your economy rather dressy.

You'll find rich corded cloth-and-vinyl Sport bucket seats inside. Plenty of handsome styling and bright trim outside. A responsive overhead cam four-cylinder engine under the hood. And the smooth riding comfort of Horizon's refined front suspension.

*Use the EPA EST MPG numbers for comparison. Your mileage may differ depending upon speed, weather and trip length. Actual highway mileage will probably be lower than highway estimate.

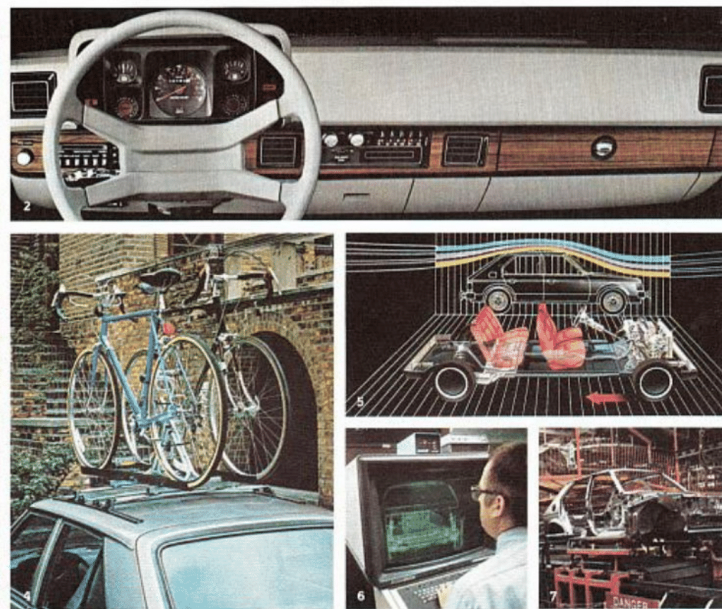


1. Horizon Custom's new interior features cloth-and-vinyl Sport bucket seats with dual recliners.
2. Horizon Custom's standard four-spoke sport steering wheel and handsome woodgrain trimmed instrument panel. Gauges are easy to read. Controls are easy to reach and use.
3. Open Horizon Custom's handy rear hatch for 10.5 cubic feet of carpeted

cargo space with the rear seats up and the standard rear shelf panel in place. 35.8 cubic feet with the rear seat down.

4. Add to Horizon's carrying capacity by adding this optional rooftop rack that can be adapted for hauling skis, bikes, luggage or camping gear with special kits available from your dealer.
5. Front-wheel drive and advanced aerodynamic design help make Horizon

AT CHRYSLER, QUALITY IS A SCIENCE.



6. Computers were used extensively in the design and development of Horizon.
7. All Horizons are built with dedication and care in one of America's most modern assembly plants where they are continually checked and rechecked to make sure they're among the very best cars on the road today.

About this catalog. We have tried to make this catalog as complete as possible. And we hope you find it useful. However, since the time of printing, some of the information you will find here may have been updated. Your dealer has details, and you should ask him for current information before ordering.

Some of the equipment shown or described throughout this catalog is available at extra cost.

HORIZON MISER: ITS **35** EPA EST MPG, 52 ESTIMATED HIGHWAY,* AND LOW PRICE MAKE IT ONE FOR THE MONEY!



This special high-mileage four-door is the car the competition must try to beat! That's because Miser delivers the economy America needs and the roominess and comfort America wants.

Powered by our specially calibrated 1.7-liter four-cylinder engine coupled with a four-speed manual transaxle with a 2.69 to 1 overall top gear ratio, Miser zips you through traffic while carrying

you across town or from coast to coast. Miser's new standard all-vinyl high-back bucket seats (at right) with deluxe color-keyed seat belts are available in four interior trim colors, while Miser's exterior color choices number 13.

For a touch of luxury, equip Miser with the optional TorqueFlite automatic transaxle and 2.2-liter engine, or a host of other options including automatic

speed control, deluxe windshield wipers, stereo sound systems, cloth-and-vinyl interior trim and more!

Miser's value becomes even more apparent when you consider its electronic fuel control system, dual horns, deluxe color-keyed steering wheel, front disc brakes and radial tires—all standard!

And with more than 30 billion miles

of front-wheel drive experience, Chrysler's engineering and quality assures you of carefree, mechanically uneventful motoring.

Like all Horizons, Miser is the product of quality-controlled manufacturing methods. Approximately one million examples of Miser's standard 1.7-liter overhead cam four-cylinder engine have been built and installed in Chrysler

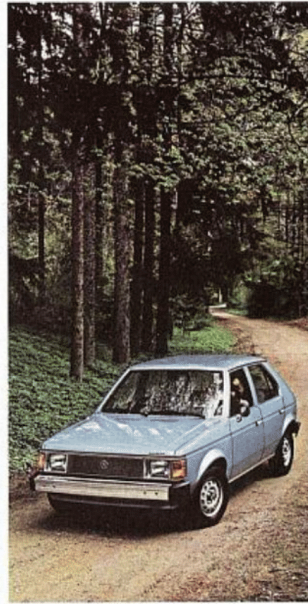
Corporation cars since we first introduced Horizon back in 1978. Also, every transaxle is subjected to testing on a special electronic test stand to make certain it will deliver smooth, trouble-free operation. The New Chrysler Corporation's ongoing quality control program, rugged Unibody construction, and the extensive use of galvanized and/or pre-coated metal in critical areas

for increased corrosion protection mean that your Horizon will stay like new for years to come.

Seating for five with the accessibility of four doors makes Miser an economical family car... and the versatility of its rear hatch and cargo area makes Miser ideal for work or play! Add function to fun by ordering the optional Light Group which includes a map and courtesy light,

ignition switch light with time-delay, and lights for the glove box, ash receiver and the cargo area. Also included are halogen headlamps (for 25 percent more light intensity), and a buzzer that warns you when you leave the car with its headlamps on. With Horizon, you're always in control of the situation.

Rack-and-pinion steering keeps you in control, too... right down to your



next stop with front disc brakes. Both are standard—engineered to give you the confident road handling you've come to expect from our front-drive Horizon.

Horizon Miser—it'll go a long way toward convincing you that this is truly the one for the money!

*Use the EST MPG number for comparison. Your mileage may differ depending upon speed, weather and trip length. Actual highway mileage will probably be lower than highway estimate.

HORIZON E-TYPE: AN IDEA BORN IN EUROPE, MADE A REALITY IN AMERICA.



Think European touring with good old American economy. The Eiffel Tower. Swiss Alps. The magic of Venice. And the comfort of home.

E-Type is all that and more. E-Type is Rallye instrumentation. Tachometer. Trip odometer. Quartz clock. All standard. Plus alternator gauge, fuel gauge, engine temperature and oil pressure warning light, and a brake system warning light.

E-Type is body-hugging seats like these standard high-back Sport buckets in corded cloth-and-vinyl with dual seatback recliners, or the all-vinyl low-back buckets that are also available as an option.

E-Type is road-handling handling with options such as steel-belted radial tires on 13-inch Rallye wheels.

E-Type is no fluff. No frills. All-business

touches include black moldings on windshield, liftgate window, drip rail and belt. Black upper door frames and center pillars. Black left and right remote control mirrors with tape stripes. Black outside door handle inserts. Black front and rear bumpers with protective rub strips.

Some final touches are the four-speed manual transaxle with the special 3.13:1 performance overall top gear ratio

mated to the optional peppy 2.2-liter Trans-4 overhead cam engine (standard in California). This is one of the best built, quietest, easiest to service, most thoroughly tested and reliable engines on the automotive scene today. And, for a note of E-Type's spirit, tape stripes run from the front wheel openings to the rear.

E-Type. The concept is European. The execution is All-American.



Certain models, packages and options are subject to specific restrictions, requirements and site availability. Consult your dealer for current ordering information.

1982 HORIZON OPTIONS

Pictured here are just a few of the many options available at extra cost on the 1982 Horizon. One or more of them can only add to your driving pleasure and could mean extra value for you at resale time.



Roof Rack.



Visor Vanity Mirror.



Air Conditioning.



Rear Window Wiper/Washer.



Automatic Speed Control/Deluxe Windshield Wipers.



New Radiant Wheel Cover.

OPTIONS

- Air Conditioning*—Manual (Miser requires 2.2-liter engine and automatic transaxle)
- Bumpers—430-amp (chrome-plated steel)
- Bumper Guards—Front and rear (chrome-plated steel)
- Bumper Protective Rub Strips—Front and rear
- Bumper Protective Rub Strips—Rear (3)
- Clock—Analog (includes trip odometer)
- Clutch—Rallye instrument (includes tachometer, clock and trip odometer)
- Console—Shift lever (3)
- Cooling—Engine (higher capacity (N/A with AC))
- Defogger—Rear window, electrically heated front glass
- Emblems—California Control System and Testing (required on vehicles registered in California, N/A otherwise)
- Emblems—High alt. (with 2.2-liter engine only)
- Glass—Clear (standard) (used with A/C tinted glass is not warranted)
- Glass—Tinted (all windows)
- Horn—Engine block
- License Plate Bracket—Front (standard where front plate is required)
- Luggage Rack—Rear
- Mirrors—Inside—Vinyl, illuminated right view
- Outside—Rearview (right and left)
- Molding—Body side black vinyl
- Power—Bumpers
- Steering—Miser requires 2.2-liter engine and auto transaxle

Radio

- All Manual—Optional on Miser model only
- AM/FM Stereo—Electronic tuning†
- AM/FM Stereo—Electronic tuning with cassette player and Dolby B system†
- AM/FM Stereo—Manual tuning
- AM/FM Stereo—Manual tuning with cassette player and Dolby B system
- AM/FM Stereo—Manual tuning, with eight-track tape player
- Radio Upgrade—Dual front speakers (N/A with stereo)
- Speed Control—Automatic (requires deluxe windshield wipers)
- Stamps—Dual body side and rear deck

Tires

- P175/75R13—Glass belted radial wide white sidewall
- P175/75R13—Steel belted radial black sidewall
- P175/75R13—Steel belted radial wide white sidewall
- Spoke—Conventional (Miser requires 2.2-liter engine and auto transaxle)
- Tires—Automatic (requires 2.2-liter engine)
- Undercoating
- Vinyl Protection—Vinyl coating on lower body
- Wheel Covers—13-inch Radiant
- Wheels—13-inch Rallye with trim rings (steel)
- Windshield Wipers—Deluxe with intermittent wipe feature
- Wiper/Washer—Rear window

*Takes without factory air conditioning have special recommended cooling equipment for later air conditioning installation. See your dealer for details.

†Not available on E-Type.

‡Standard on E-Type.

§Recommended adequate engine cooling performance on vehicles to be equipped with a turbo-charged engine. Also recommended for use in high temperature areas and for light-duty trailer use.

†Lure availability.

‡Dolby is a trademark of Dolby Laboratories.

OPTIONAL PACKAGES

Bright Exterior Accent Package
(Available on Horizon Custom only)

- Bright wheel covers—Bright belt and sill moldings*
- Dual body side and liftgate tape stripes

Two-Tone Paint Package
(Available on Horizon Custom only)

- Two-tone paint**
- Full-length body-side and liftgate moldings*
- Dual accent stripes on body side and rear
- See Colors

Light Group

- Map/outline light*
- Glove box light*
- Rear view mirror light*
- Luggage compartment light*
- Visor light*
- Headlamp*
- Ignition switch light with time delay*
- Headlamp*
- Available in Package only.

INTERIOR TRIM

Standard on Horizon Miser—
All-vinyl high-back bucket seats with vinyl-trimmed headrests. Fold-down rear seat. Offered in Red, Custom, Blue, Black.

Standard on Horizon Custom and E-Type—
Cloth and vinyl sport-type high-back bucket seats with vinyl-trimmed headrests and dual webback recliners. Fold-down rear seat. Offered in Red, Custom, Blue, Silver, Black.

Optional on Horizon Miser—
Cloth and vinyl high-back bucket seats with vinyl-trimmed headrests. Fold-down rear seat. Offered in Red, Custom, Blue.

Optional on Horizon Custom and E-Type—
Cloth and vinyl high-back bucket seats with vinyl-trimmed headrests. Fold-down rear seat. Offered in Red, Custom, Blue.

Optional on Horizon Miser—
Cloth and vinyl high-back bucket seats with vinyl-trimmed headrests. Fold-down rear seat. Offered in Red, Custom, Blue.

Optional on Horizon Custom and E-Type—
Cloth and vinyl high-back bucket seats with vinyl-trimmed headrests. Fold-down rear seat. Offered in Red, Custom, Blue.

Optional on Horizon Custom and E-Type—
Cloth and vinyl high-back bucket seats with vinyl-trimmed headrests. Fold-down rear seat. Offered in Red, Custom, Blue.

Optional on Horizon Custom and E-Type—
Cloth and vinyl high-back bucket seats with vinyl-trimmed headrests. Fold-down rear seat. Offered in Red, Custom, Blue.

Optional on Horizon Custom and E-Type—
Cloth and vinyl high-back bucket seats with vinyl-trimmed headrests. Fold-down rear seat. Offered in Red, Custom, Blue.

STANDARD FEATURES

	Horizon Miser	Horizon Custom	Horizon E-Type
Alternator—60-ampere	S	S	S
Antelock—Instrument panel	S	S	S
Battery—310 ampere	S	S	S
Bumpers—Manual disc front, drum rear	S	S	S
Bumper Protective Rub Strips—Front and rear	NA	S	S
Bumpers—Front and rear, bright	S	S	S*
Carpet—Cargo compartment (includes sound insulation)	NA	S	S
Center console—Rear	S	NA	NA
Clutch—Passenger compartment, color-keyed	S	S	S
Cigarette Lighter	S	S	S
Cleaner Air System	S	S	S
Clock and Trip Odometer	E	E	S
Clutch—Rallye instrument, tachometer, clock and trip odometer	NA	E	S
Coat Hooks	S	S	S
Console—Dual door	NA	E	S
Directional Signals—With brake change feature	S	S	S
Door Handle Inserts—Exterior, black	NA	NA	S
Flashers—Hazard warning	S	S	S
Front Wheel Drive	S	S	S
Fuel Control System—Electronic	S	S	S
Headliner—Cloth-covered	S	S	S
Horn and Bellows	S	S	S
Head Restraints—Inside	S	S	S
Head Shifter Pad	S	S	S
Horn—Dual	S	S	S
Ignition and Voltage Regulator—Electronic	S	S	S
Instrument Panel—Podium	S	S	S
Instrument Panel—Woodgrain applique	NA	S	S
Instrumentation—Alternator gauge, engine temperature/pressure warning light, fuel gauge, speedometer (80, 100, 140 km/h)	S	S	S
License Plate Bracket—In states where required	S	S	S
Lights—Backup, dome light with front door switches, headlight and wiper switches, parking brake warning, side-view quad (with side turn), side marker lights and reflectors, rearview mirror headlight	S	S	S
Lock—Glove box	S	S	S
Mirror—Exterior, left and right, chrome	E	E	S*
Mirror—Exterior, left and right, chrome	S	S	NA
Mirror—Inside, day/night	S	S	S
Moldings—Belt bright	NA	E	S*
Moldings—Drip rail, bright	NA	S	S
Moldings—Upper door frame, bright	NA	S	NA
Moldings—Windshield and rear window, bright	S	S	S*
Radio—AM	E	S	S
Seat Belts—Deluxe, color-keyed	S	S	S
Seat Panel—Rear security, sliding type	NA	S	S
Shifting Gear—Black and chrome	S	S	S
Shifting Wheel—Sport, four spoke, color-keyed	NA	S	S
Shifting Wheel—Three spoke, color-keyed	S	NA	NA
Stripes—Wheel opening, lower body side and mirror	NA	NA	S
Suspension—Front, top-tilt independent rear, trailing arms, semi-independent	S	S	S
Tires—13-inch Rallye wheels	S	S	S
Tires—P175/75R13 glass belted radial, black sidewall (Rear)	S	S	S
Transaxle—Four-speed manual, synchronized in 1st forward gear	S	S	S
Wheel Covers—Deluxe (steel)	NA	S	S
Wheels—Road, 13-inch steel, bright lip and center hub, painted silver color (steel)	S	S	NA
Windshield Wipers—Electronic	S	S	S
Windshield Wipers—Two-speed electric	S	S	S

*Standard. E—Lure only. NA—Not available.

†Available only in Bright Exterior Accent Package.

Plymouth For 1982

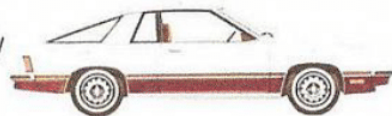
Champ. Our front-wheel drive, five-passenger import. Three hatchback models to choose from.



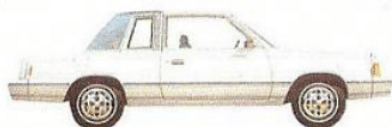
Sapporo. The sophisticated sport coupe with European styling... plus handling, performance and luxury to match.



TC3. Our sleek front-wheel drive two-door hatchback lineup features the Miser, handsome Custom and sporty Turismo models.



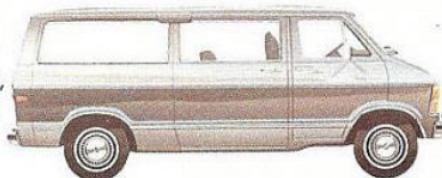
Reliant. America's "first family" of efficient front-wheel drive, six-passenger cars. Available in two-door, four-door and wagon models.



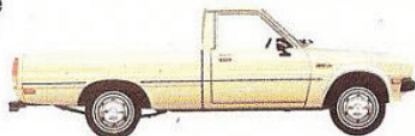
Gran Fury. Big-car room, ride and comfort in a trim, affordable, six-passenger four-door.



Voyager. The ultra-roomy people-mover that can carry from six to fifteen passengers, depending on the model you choose.



Arrow Pickup. The good-looking, sporty, imported little pickup that's strong, reliable and built to last.



EXTERIOR COLORS

Formal Black	Graphic Red
Daystar Blue Metallic	Morocco Red
Ensign Blue Metallic	Burnished Silver Metallic
Navy Blue Metallic	Spice Tan Metallic
Manila Cream	Pearl White
Charcoal Gray Metallic	Graphic Yellow*
Medium Seaspray Green Metallic	

Two-Tone Colors
(available on Horizon Custom only)

Daystar Blue Metallic/Navy Blue Metallic
Manila Cream/Light Carmel Tan
Burnished Silver Metallic/Charcoal Gray Metallic

Note: Due to occasional printing irregularities, the colors shown may vary slightly from actual hues. See your dealer for accurate color chips.

CORROSION PROTECTION

Chrysler Corporation's corrosion protection is among the best in the industry. It includes the extensive use of galvanized steel metal panels, one of the best known methods of corrosion protection, and pre-coated steel in critical areas, as well as the seven-step dip-and-spray process.

Buy or Lease a Plymouth Horizon

If you buy a new car every two years or so, or would like to, you're in an ideal situation to take advantage of leasing—for that's the typical length of a lease contract. If you use your car in business, leasing could cut down on your operating and administrative expenses as well as give you accurate records for tax purposes. The more you learn about leasing, the more likely you are to consider it seriously. Talk it over with us—your local member of the Chrysler Leasing System.

DIMENSIONS, WEIGHT AND CAPACITY

	Horizon Miser	Horizon Custom	Horizon E-Type
Length, Overall:	162.6"	162.6"	163.2"
Width, Overall:	65.8"		
Height, Overall:	53.1"		
Wheelbase:	99.1"		
Turning Diameter:	34.3' left/35.9' right		
Curb Weight (estimated):	2,118 lbs	2,172 lbs	2,234 lbs ¹
Track:	56.1" front, 55.6" rear		
Cargo Capacity —with rear seatback raised:	10.5 cu ft (shelf panel height)		
—with rear seatback down:	35.8 cu ft		
Passenger Capacity	5		
Fuel Capacity	13 gallons (49 liters)		

¹With 2.2-liter engine.

ENGINE AND TRANSAXLE

	Horizon Miser	Horizon Custom	Horizon E-Type
1.7-liter (104.7 CID) 4-speed manual	Standard	NA	NA
4-speed manual —2.69:1 OTGR	NA	Standard 49 states	Standard 49 states
4-speed manual —3.37:1 OTGR	NA	Standard 49 states	Standard 49 states
2.2-liter (135 CID) ¹ 4-speed manual —2.69:1 OTGR	NA	Standard California	NA
4-speed manual —3.13:1 OTGR	NA	NA	Standard California, Optional 49 states
3-speed automatic—2.78:1 OTGR	Optional	Optional	Optional

¹Available with High-Altitude Emissions.

NA—Not available

Note: Emissions Control and Testing required in California.

STANDARD SAFETY FEATURES

- Safety-Rim wheels • Combination lap-shoulder belts for the driver and right front passenger, and lap belts for all other passengers • Seat belt reminder system
- Energy-absorbing steering wheel • Dual braking system with separate brake fluid reservoirs in the master cylinder
- Brake fluid pressure loss warning light (also serves as indicator when parking brake is applied) • Hazard warning flasher system • Turn signals with lane-change features • Electronic ignition • Backup lights
- Energy-absorbing sun visors • Front seat head restraints • Energy-absorbing front seatbacks • Inside and outside rearview mirrors • Side marker lights and reflectors • Seatback latches on folding seats • Fade-resistant front disc brakes • Electric windshield washers and wipers • Ignition and steering column lock • Anti-theft trunk lock • Headlamp and wiper circuit breakers with automatic reset • Key-left-in-ignition warning • Non-override door locks (except driver's door) • Resilient window crank knobs • Side door beams • Dual throttle return springs • Interlocking door latches
- Recessed inside door release handles • Rotary glove

- box latch • Reinforced windshield header and roof
- Glare-reduction measures for windshield wipers, instrument panel and steering wheel • Double ball-joint rearview mirror mount

5/50 PROTECTION PLANS.

Chrysler offers you two choices of 5/50 Protection Plans: the 5/50 Power Train Plan and the 5/50 Custom Plan. These optional service contracts provide you with protection against tomorrow's rising service and parts costs for specified major repairs starting after your vehicle's "basic" limited warranty expires and lasting for five years or 50,000 miles (whichever occurs first) from your vehicle's original in-service date. The plans have a \$25 deductible, and provide an allowance for alternate transportation and towing. Ask your dealer for complete details.

All product illustrations and specifications are based on authorized information. Although descriptions are believed correct at publication approval, accuracy cannot be guaranteed. Some of the equipment shown on product illustrations is optional, at extra cost. Chrysler

Corporation reserves the right to make changes from time to time, without notice or obligation, in prices, specifications, colors and materials, and to change or discontinue models. See your Plymouth dealer for the latest information.



MOPAR parts are engineered by Chrysler Corporation for use in your new Plymouth Horizon. When replacement is necessary, be sure to specify MOPAR parts. Used by professional mechanics all over the world.