



**VOLVO S80**





# Reward yourself. Spoil others.

Everybody wins here. Drive the new Volvo S80 and reward yourself with the perfect balance of luxury and intelligence. Enjoy indulgence without extravagance, performance without pretence and safety without peer. This well-crafted expression of automotive excellence reflects the quiet confidence of those who can share their achievements without reservation.

**Volvo. for life**







## The meticulous attention to detail includes the road ahead.

This Volvo S80 delivers the royal treatment – 21st century style. Technologically speaking, scouts run ahead, check the road, and report back. At work are digital video and radar-based predictive technologies – Adaptive Cruise Control (ACC)\* and Collision Warning with Auto Brake (CWAB)\* – which monitor the cars in front and adjust power delivery and braking intuitively. This onboard intelligence is available to help you negotiate traffic in terms most favorable to you and your passengers – helping you keep a safe distance. The creature comforts and thoughtful amenities throughout the cabin also seem to anticipate and satisfy your every need – even the remote key or the Personal Car Communicator (PCC)\*\* can help keep you in touch with your car's status: locked, unlocked, occupied? Call it a sixth sense, second sight or intuition; no one predicted intelligence would travel like this.

\* Part of Collision Avoidance System, included in optional Technology Package and standard V8  
\*\* Standard V8, included in optional Technology Package T6





Volvo's advanced driving system helps make driving more comfortable. Now supplemented with an optional digital video camera\* to help examine the road ahead, it is possible for the new Volvo S80 to discern stationary objects from other road users and to register lane markings. If you are ever distracted or tired, the car's ability to identify your lane – and any stationary vehicles in your lane – can help you reach your destination without incident. But please note: even these sophisticated systems – Lane Departure Warning (LDW)\*, Driver Alert Control (DAC)\* and the Blind Spot Information System (BLIS)\*\* – have limitations. It is the driver's responsibility to remain alert at all times.

\*Part of Collision Avoidance System and included in optional Technology Package  
 \*\*Standard T6 and V8





## Intelligence creates its own momentum.

Power and control. How often do you find them in perfect accord? In all its versions, the new Volvo S80 offers fluid performance. The drivetrain and chassis perform as one. Acceleration is never delayed. And liveliness is assured by immediate response throughout the entire range of engine speeds. Volvo's premium source of power, the 311 hp V8, combines enormous capacity with superior refinement. With advanced, hyper-efficient fuel management systems, each available Volvo engine maximizes performance in the smartest way possible.





It doesn't just devour highway, it knows which fork to use.

Experience sophistication and refinement where it matters most: on the road. Here, the advanced chassis displays impeccable manners. Defined by high torsional-rigidity, wide stance and a long wheelbase, the Volvo S80 chassis is a faithful interpreter of road and driver. Its multi-link rear suspension counteracts any tendency to understeer while the McPherson front suspension struts promote superior comfort. Above and beyond the manifestation of comfort and performance that's standard in the Volvo S80, the lowered sport chassis delivers impressive agility and balance. With it you'll experience quicker steering and a sure, planted feeling at all times, in all corners. Devour miles of highway with grace and then relish the twists and turns that lead you home in time for dinner. Bon appétit.





Volvo designers feel they've created an environment ideal for driver and passenger alike. Floating layers, inspired by Scandinavian landscapes, both converge and soothe. Controls are easy to operate and pleasing to touch. Even the Volvo Navigation System's (VNS)\* screen appears and disappears into the dashboard with an elegance and simplicity that complements its vast functionality. And much attention has been paid to comfort throughout the cabin. For example, the seats set the standard for ergonomic and aesthetic excellence – and with ventilated front seats\*\*, integrated fans can help you stay cool.

\* Optional  
\*\* Standard T6





## An air of refinement that actually includes refined air. How refreshing.

What makes a luxury car a luxury car? Is it the broad, beautiful strokes of polished wood, exquisite leather surroundings, and a cabin so quiet you can hear the sound of satisfaction? Or is it in the minute details that show, in every respect, this luxury car is at your service. For example, the Volvo S80 can claim air so free of allergens, it is

recommended by the Swedish Asthma and Allergy Association. In any case, this is a car that enjoys the highest standards – as will everyone who travels aboard. And when it comes to luxury – if you want it all, the Volvo S80 has it all.





## Mind the crystal.

Volvo's modern sound systems are among the best in the world – especially with the latest generation of Dolby® Pro Logic® II Surround, pure digital amplification and spectacular loudspeakers from Danish studio-monitor specialist, Dynaudio. Our audiophile system, Dynaudio Premium Sound System\*, utilizes twelve Dynaudio loudspeakers – including two in the centre – and sophisticated sound processing calibrated especially for the interior of the Volvo S80. Plug in your favorite MP3 player or iPod® and the combination of crystal-clear presence and wake-the-neighbors power ensures accurate reproduction of your favorite songs at any volume. Please exercise caution.

\* Standard V8, included in optional Technology package T6



Ordinary, but only when  
over-achievement is.

If nonconformity is the first sign of intelligence, then the Volvo S80 is brilliant against a crowded field of luxury cars. But it's not just different for argument's sake. It's different for your sake. With the safety, performance, comfort and style beyond the expected, this is what happens when the European luxury sedan gets a significant Scandinavian upgrade.





# Welcome to the Executive lounge.

Intuitive and luxurious, our top of the line Executive\* variant takes the sensory experience of the Volvo S80 even further. Relax in lush surroundings finely detailed by ambient lighting throughout and enjoy. Of course, handcrafted soft leather and hand-finished walnut wood abound.

\*Standard V8

The ventilated front seats are fully upholstered in perforated soft leather and feature an Executive massage treatment to really spoil you. Contrasting seams and piping add to the elegance. The side and centre armrests are upholstered in soft leather, and your feet can rest on

the thick Executive nubuck-trimmed textile mats. There's walnut wood trim in door panels, steering wheel, gear knob and dashboard – all complimented by the unique walnut wood Executive centre console with an articulated aluminium cover. Note the time on the elegant analog

clock. Then turn on the stereo, and fill the cabin with music from the 650 W Dynaudio Premium Sound system\* with Dolby® Pro Logic® II surround sound and twelve Dynaudio loudspeakers.

\*Standard V8, included in optional Technology Package T6







Anthracite black interior  
Ventilated Soft Leather Graphite (2G00)  
Classic wood centre console and door panel inserts  
(Standard V8)



Sandstone Beige interior  
Ventilated Soft Leather Soft Beige (2G12)  
Classic wood centre console and door panel inserts  
(Standard V8)



**Executive interior design**  
The Executive interior is available in two different colour themes  
– Anthracite Black and Sandstone Beige.

**Integrated rear seat refrigerator**  
For the simple pleasures, you can add a refrigerator between the rear seats. Refreshments are kept cold and within convenient reach for those with the privilege to ride in the back. These passengers will also have their own hand-cut Swedish crystal by Kosta Boda, designed by the Swedish glass artist, Bertil Vallien, and engraved with the Executive emblem. The cabinet includes a specially designed Executive bottle opener in stainless steel and features ambient light to set the crystal aglow.





## WE INNOVATE FOR LIFE.

For decades, we've created cars that encourage people to enjoy life and help protect it in the event of an accident. Many of the most important car safety innovations are the hallmark of Volvo, and hundreds of thousands of people all over the world can say they're still alive thanks to Volvo ingenuity.

This is not by coincidence. Our founders stated that safety is, and shall always be, at the heart of what we do. As a result, Volvo is recognized the world over for our passion and dedication to provide the safest cars on the road.

The protective character of Volvo also encompasses the world we share. Already in 1972, Volvo was the first car manufacturer to acknowledge and actively respond to the environmental impact of cars. In fact, we invented the three-way catalytic converter, and are constantly innovating to reduce the environmental impact of the cars we make and how we make them.

Of course, choosing a Volvo will always be something you do for both yourself and the people around you – because our cars will always consider the well-being of everyone. Even if those people happen to be outside your car or are part of future generations.

Find more innovations at [volvocanada.com](http://volvocanada.com)



“Cars are driven by people. Therefore, the guiding principle behind everything we make at Volvo is – and must remain – safety.”

Assar Gabrielsson and Gustaf Larson, founders of Volvo

### CITY SAFETY COLLISION AVOIDANCE TECHNOLOGY

In 2008, Volvo Cars introduced the new XC60 with City Safety – the world's first standard-fitted collision avoidance and mitigation technology active at speeds up to 30 km/h. Helping to lower the risk of low-speed collisions and whiplash injury, City Safety is a major step towards safer urban driving. At the moment, City Safety is only available in the Volvo XC60.

### THE THREE-WAY CATALYTIC CONVERTER

In 1976, Volvo Cars was the first car manufacturer to introduce the three-way catalytic converter with an oxygen sensor for exhaust emission control. Today virtually all gasoline-powered cars are equipped with this ingenious component – just as indispensable for the environment as the three-point seat belt is for safety.

### THE THREE-POINT SAFETY BELT

In 1959, Nils Bohlin, a Volvo safety engineer, invented the three-point safety belt. So important is this invention, it is considered to be one of the most life-saving technical innovations in the history of mankind.

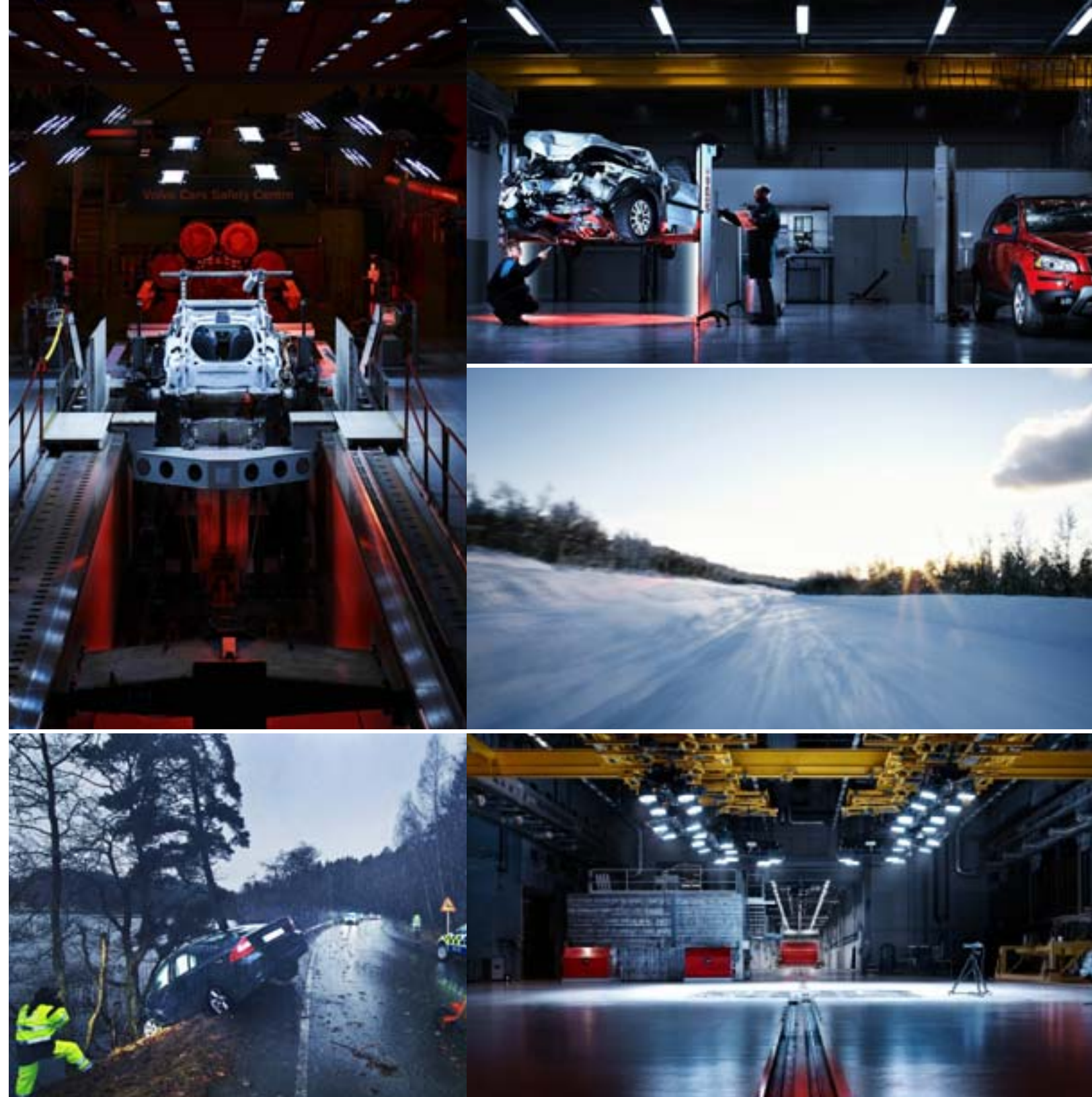


# VOLVO SAFETY TECHNOLOGY. BECAUSE PEOPLE ARE ONLY HUMAN.

Cars are driven by people. That's why all our safety research and development continues to investigate the capabilities, limitations and tendencies of human nature. This people-centric research is always based on real situations – and with the vision to create cars that do not crash.

To help you avoid accidents while maintaining the fun of driving, Volvo safety technologies are designed to support the driver in various situations without unnecessary interference. All these intelligent technologies share information and interact with split-second precision. Today, a new Volvo can “read” actual situations and provide optimal support and protection for example, by sensing normal driving patterns or panic situations and by taking protective action before, during and after a collision. Still, technology can never take the responsibility away from you, the driver. Final decisions are always in your hands. But if these technologies help make you more alert and relaxed, they will also contribute to the overall safety of those in and around your Volvo.

Read more about our safety research at [volvocanada.com](http://volvocanada.com)



## VOLVO ACCIDENT RESEARCH TEAM

Since 1970, Volvo's Accident Research Team has investigated accidents involving Volvo cars on Swedish roads. Today, our own statistical database contains over 36,000 accidents with more than 60,000 occupants. In addition to studies on the scene of the accident, our researchers also investigate what happened before the crash to understand how to improve the driver's conditions to avoid a collision. These findings give us unique knowledge that guides us in creating technology that helps prevent or mitigate accidents and – if an accident can't be avoided – to help protect the occupants.

## VOLVO CARS SAFETY CENTRE

Based on the findings from our accident research, we can recreate a variety of real-life traffic situations and crashes. Beyond numerous virtual crash tests in super-computers, we perform around 400 crash tests each year. We crash test car-to-car at different speeds and from different angles. We perform frontal impacts, rear impacts, side impacts and roll-over tests and test cars off-road as well as against genuine Swedish granite rock-face – we can even simulate impacts with wild animals.

## IF YOU MAKE IT HERE, YOU MAKE IT ANYWHERE

Other car manufacturers come to Sweden for final car testing under harsh and capricious conditions. For us it's home. Our own proving ground Hålleröd with its 55 km of test tracks includes different road types from all over the world. Here we scrutinize our cars' ability to support their drivers in all imaginable and unimaginable situations during thousands of test miles – not to mention the distances driven on ordinary Swedish roads.

## TOWARDS A FUTURE WHERE CARS DON'T CRASH

We already know what we want to achieve: no accidents. By applying a holistic approach which considers the driver and the vehicle as well as the infrastructure, we can realize a future where cars interact with other cars, the road and the traffic-control systems. For example, this includes cars that can brake and steer automatically, if needed. This makes it possible to design cars in completely new ways to protect and preserve life.





## IS DOING FOR THE ENVIRONMENT WHAT THE SAFETY BELT DOES FOR PEOPLE.

Looking after people and the environment is an indispensable part of the Volvo soul. For more than 80 years we've been driven by a passion for safety. We are environmental pioneers in the car industry, and have always employed a healthy respect for our limited resources and environmental responsibilities. Consequently, we aim to create new solutions that help halt climate change and improve the environment – both inside and outside the car. Our goal is crystal clear: to build cars that leave a minimal impact on the environment. We don't think that there is just one way to tackle the environmental issues. We think there are many solutions and we must explore all the options. That's why we're developing new eco-technologies. **DRIVE captures all our environmental work – from production to recycling – and represents our commitment and continued efforts for sustainable mobility.**



### MOTION

We must minimize the emissions of fossil CO<sub>2</sub> (which leads to climate change) and increase the energy efficiency of our cars. **Continuous improvements** within aerodynamics, rolling resistance, lightweight materials and drive train technology help us lower fuel consumption. In our new **Hybrid technology centre** in Göteborg, we are developing the next generation power trains for future Volvos.

### INSIDE

If you drive 15,000 km a year, you spend at least 24 hours a month in your car. We also know that more and more people are suffering from asthma and allergies. To ensure a healthy interior for you and your passengers, we test upholsteries and interiors in the **Volvo Environmental Laboratory** in Sweden. All upholstery materials and interior textiles also comply with **Oeko-Tex Standard 100** – an international benchmark for human ecological safety of textiles. All **leathers are chromium-free** – they're tanned using vegetable or synthetic substances instead of chromium. What's more, some panel trims are **Forest Stewardship Council (FSC) certified** to ensure the wood comes from responsibly managed forests.

### LIFECYCLE

Already from the early stages of conception we've considered our cars' environmental impact: from design and manufacturing to useful life and recycling. For example, we've seen to it that our factories are powered by wind and hydro power and use energy and water responsibly. Our production facilities are certified under **the global environmental standard ISO 14001**, and we make sure that all our major suppliers meet our strict environmental standards. At the end of its useful life, every Volvo is designed to be **85% recyclable**. We also offer **re-manufactured exchange parts** which substantially reduces the need for raw materials and energy.



## WHAT'S IN IT FOR YOU?

We are committed to creating cars that contribute to a better life – be it inside or outside the vehicle. Utilizing advanced technology, your Volvo is designed to use fuel efficiently and reduce its impact on the environment. This caring attitude continues inside your Volvo. Here you and your passengers can experience one of the automotive industry's cleanest and healthiest cabin environments. It's as enjoyable as it's responsible. Just as you would expect of a Volvo.



### FRESH CABIN AIR.

Continuously monitoring incoming air and shutting out carbon monoxide, ground-level ozone and nitrogen dioxide, Volvo's Interior Air Quality System\* helps ensure that the air you breathe in the car is cleaner than that outside when driving in heavy city traffic.

\* Standard

### SAFER INTERIOR MATERIALS.

All our upholsteries and interior textiles are tested for certain allergy-inducing or harmful substances and comply with Oeko-Tex Standard 100. And several interior metal details are tested with regard to contact allergies. Good for you, and for anyone who shares your ride.

### FUEL-SAVING DESIGN.

To reduce energy-loss from wind and roll resistance, we utilize advanced aerodynamic design, light-weight materials and low-friction technology. Together with state-of-the-art engine technology, this lowers your CO<sub>2</sub> emissions and helps you travel further.



STANDARD FEATURES

SAFETY AND SECURITY	3.2 FWD	T6 AWD	V8 AWD
Adaptive Cruise Control (ACC)*	N/A	P	●
Approach lighting - side view mirrors puddle lights	●	●	●
Automatic re-locking	●	●	●
Blind Spot Information System (BLIS)	N/A	●	●
Collision warning with auto brake (CWAB)*	N/A	P	●
Distance Alert (DA)*	N/A	P	●
Driver Alert Control (DAC)*	N/A	P	●
Dynamic Stability and Traction Control System (DSTC)	●	●	●
Electronic Ignition Immobilizer	●	●	●
Five head restraints	●	●	●
Home Safe lighting	●	●	●
Inflatable Curtain (IC)	●	●	●
Intelligent Driver Information System (IDIS)	●	●	●
ISOFIX Baby/Child Attachment System	●	●	●
Key integrated remote control, central locking (KIR)	●	●	●
Lane Departure Warning (LDW)*	N/A	P	●
Multi-stage airbag, driver and passenger, with kneepad	●	●	●
Occupant weight sensor	●	●	●
Personal Car Communicator with Keyless Drive	N/A	P	●
Power child lock, rear doors	●	●	●
Pyrotechnic pretensioners on all seating positions (5)	●	●	●
Retractable mirrors & Puddle Lights	N/A	●	●
Side Impact Protection System (SIPS)	●	●	●
SIPS airbags	●	●	●
Three-point seat belts (5)	●	●	●
Volvo Guard Alarm	●	●	●
Level Sensor	N/A	P	●
Mass Movement Sensor	N/A	P	●
Whiplash Protection System (WHIPS) front seats	●	●	●
EXTERIOR			
7x16" Naos alloy wheel	●	N/A	N/A
7x17" Cassini alloy wheel 225/50/17 (A/S)	P	N/A	N/A
8x18" Odysseus alloy wheel 245/40/18 (A/S)	N/A	●	N/A
8x18" Balius alloy wheel 245/40/18 (A/S)	N/A	N/A	●
"Eggcrate" grille	●	●	●
Active Bending Lights (ABL)	N/A	●	●
Colour coordinated door mouldings	●	●	●
Executive emblem	N/A	N/A	●
Front fog lights	●	●	●
Halogen headlights	●	N/A	N/A
Headlight washers	●	●	●
Heated power side view mirrors	●	●	●
Heated rear window	●	●	●
Power tilt and sliding electric glass sunroof with sunshade and anti-trap feature	P	●	●
Rear fog light	●	●	●
Side direction indicators	●	●	●
Side positioning lights	●	●	●
Tinted glass	●	●	●

INTERIOR	3.2 FWD	T6 AWD	V8 AWD
Aluminum inlays	●	○	●
Electrically foldable rear head restraints	●	●	●
Executive floor mats	N/A	N/A	●
Fold flat front passenger seat	●	●	●
Foldable 60/40 split rear seat	●	●	●
Heated front seats	P	●	●
Heated rear seats	N/A	●	●
Leather gear shift	●	N/A	N/A
Leather gear shift with wood inlays	N/A	●	●
Leather steering wheel	●	●	●
Leather upholstery	●	●	N/A
Memory for driver seat and side view mirrors	●	●	●
Perforated leather sport seats	N/A	●	N/A
Perforated soft leather	N/A	N/A	●
Power driver seat	●	●	●
Power passenger seat	P	●	●
Electrical adjustable passenger seat from passenger side	N/A	N/A	●
Ventilated front seats	N/A	●	N/A
Ventilated massage front seats	N/A	N/A	●
Walnut wood inlays	N/A	N/A	●
Wood effect inlays	N/A	●	N/A
Wood steering wheel	N/A	○	●
Performance sound, 1 CD, AUX input, 4x20W, 6 speakers	●	N/A	N/A
High Performance sound system with 8 speakers, AUX input, MP3, 4x40 W	N/A	●	●
Premium sound system with 12 Dynaudio speakers, AUX input, MP3, 5x130 W, Dolby® Pro Logic® II	N/A	P	●
In-dash 6 CD	N/A	●	●
Sirius Satellite Radio	N/A	●	●
12V outlet	●	●	●
Analog clock	N/A	N/A	●
Auto dimming rear view mirror with Compass	●	●	●
B-Pillar air vents	●	●	●
Bluetooth®	P	●	●
Clock	●	●	●
Cruise control	●	●	●
Dual screen rear seat entertainment system (RSE)	N/A	○	○
Dual-Zone Electronic Climate Control (ECC)	●	●	●
Electric foldable outer rear head restraints	●	●	●
Electric parking brake	●	●	●
Front and rear reading lamps	●	●	●
Front armrest with cupholder	●	●	●
Front seat back storage pockets	●	●	●
Heated windscreen washer nozzles	●	●	●
Homelink®	●	●	●
Humidity Sensor	N/A	●	●
Illuminated sill plates	N/A	N/A	●
Illuminated vanity mirrors in driver's and front passenger's sun visors	●	●	●
Illuminated, lockable glove box	●	●	●



FACTORY OPTIONS


	3.2 FWD	T6 AWD	V8 AWD
Metallic paint	○	○	●
Sunroof	○	●	●
Aluminum Inlay	N/A	○	N/A
Wood steering wheel (with wood inlays only)	N/A	○	N/A
HDD Navigation System with Real Time Traffic, Remote Control and Map Care	N/A	○	○
Dual screen rear seat entertainment system (RSE)	N/A	○	○

● = Standard Equipment   N/A = Not Available   P = Option Package   ○ = Stand Alone Option

PACKAGES

<p><b>PREMIUM PACKAGE 3.2 FWD</b></p> <ul style="list-style-type: none"><li>• 7x17" Cassini alloy wheels</li><li>• Bluetooth®</li><li>• Heated front seats</li><li>• Power passenger seat</li></ul>	<p><b>TECHNOLOGY PACKAGE T6 AWD</b></p> <ul style="list-style-type: none"><li>• Collision Avoidance System</li><li>• Level sensor</li><li>• Mass movement sensor</li><li>• Personal Security Communicator with Keyless Drive</li><li>• Premium Sound, Dolby® ProLogic® II, 12 Dynaudio speakers, 5x130W amplifier</li><li>• Speed sensitive steering</li></ul>
---	--

\* Part of the Collision Avoidance System

 The Bluetooth word mark and logos are owned by the Bluetooth SIG, Inc. and any use of such marks by Volvo Car Corporation is under license. Other trademarks and trade names are those of their respective owners.





**COLOUR YOUR VOLVO.** When it comes to the appearance of your Volvo, the choice of exterior colour, wheels and other styling items are probably your most important design decisions. For more exterior styling options and to build your new Volvo online, please visit **[www.volvocanada.com](http://www.volvocanada.com)**



614 Ice White  
(Standard 3.2 and T6)



453 White Pearl\*  
(Standard V8, optional T6)



426 Silver metallic\*  
(Optional 3.2)



477 Premium Electric Silver metallic\*  
(Standard V8, optional T6)



467 Magic Blue metallic\*  
(Standard V8, optional 3.2 and T6)



472 Oyster Grey metallic\*  
(Standard V8, optional T6)



487 Ember Black metallic\*  
(Standard V8)



019 Black Stone  
(Standard 3.2 and T6)

**Clean colours**

To reduce usage of environmentally hazardous solvents all Volvo exterior colours are water-based. What's more, our painting facilities are among the cleanest in the world.

**Please note:** It is not possible to reproduce exact original shades in printed matter. Please ask your retailer to show you samples.

\* Metallic paint is an option.

**EXTERIOR DESIGN** Aluminium wheels



Naos 7x16"  
Silver Stone  
(Standard 3.2)



Cassini 7x17"  
Silver Bright  
(Included in optional Premium Package 3.2)



Balius 8x18"  
Silver Bright  
(Standard V8)



Odysseus 8x18"  
Silver Bright  
(Standard T6)





INTERIOR DESIGN



Leather/Classic wood steering wheel,  
Soft Beige with Silk metal inlay  
(Standard V8, optional T6)



Leather-clad steering wheel,  
Sandstone Beige with Silk metal inlay



Leather/Classic wood steering wheel,  
Offblack with Silk metal inlay  
(Standard V8, optional T6)



Leather-clad steering wheel,  
Offblack with Silk metal inlay



Leather/Classic wood gear knob  
Sandstone Beige, Geartronic  
(Standard V8, optional T6)



Leather-clad gear knob  
Sandstone Beige with Silk metal inlay, Geartronic  
(Standard T6 and 3.2)



Leather/Classic wood gear knob  
Offblack, Geartronic  
(Standard V8)



Leather-clad gear knob  
Offblack with Silk metal inlay, Geartronic  
(Standard T6 and 3.2)



Cross brushed aluminium trim  
(Standard V8 and 3.2, optional T6)



Classic wood trim  
(Standard V8)



Modern wood trim  
(Standard T6)



Anthracite Black interior  
Ventilated Soft Leather Graphite (2G00)  
(Standard V8)



Anthracite Black interior  
Anthracite Black Leather (2101)  
(Included in 3.2 Premium package)



Anthracite Black interior  
Sundby T-Tec/textile Anthracite (2501)  
(Standard 3.2)



Sandstone Beige interior  
Ventilated Soft Leather Sandstone Beige (2G12)  
(Standard V8)



Sandstone Beige interior  
Sandstone Beige Leather (2112)  
(Standard 3.2)



Sandstone Beige interior  
Sundby T-Tec/textile Mocca Brown (2514)  
(Standard 3.2)

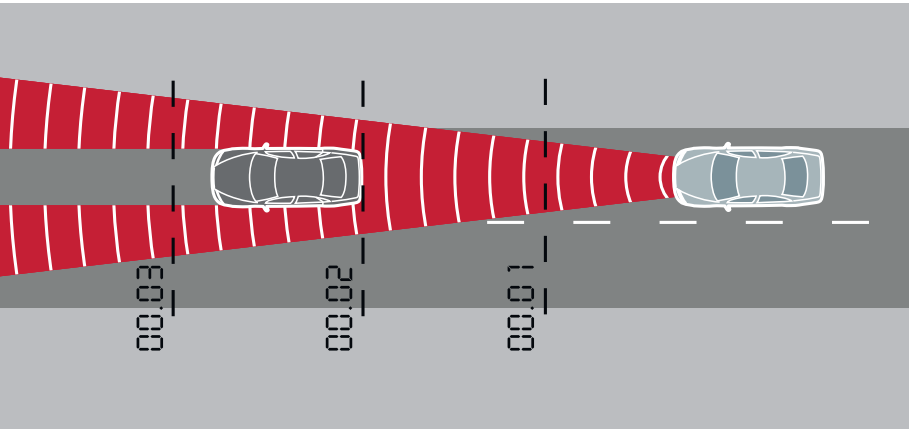


# SAFETY

At the core of every car we make, state-of-the-art technology helps support the driver and protect the occupants. And to further enhance the Volvo safety experience, there's a range of supplementary safety technology – for more performance and peace of mind.



## SAFETY Preventive



### Adaptive Cruise Control (ACC) with Distance Alert\*

Helping the driver to keep a safe distance from vehicles in front at speeds over 30 km/h, ACC is a supportive partner for a more relaxed driving experience on long journeys and motorways. Just select the desired speed and the minimum time gap to the vehicle in front. When the radar sensor detects a slower vehicle in front, the speed automatically adapts to that vehicle. And when the road is clear, the car resumes the selected speed. If ACC is disengaged and a vehicle in front comes too close, Distance Alert activates a red warning light in the lower section of the windscreen to help you keep a proper distance.

\* Part of Collision Avoidance System and included in optional Technology Package



### Collision Warning with Auto Brake (CWAB)\*

Primarily designed for highway driving, CWAB can warn you if you're too close to a vehicle in front and – if a collision can't be avoided – can activate the brakes to help mitigate the impact. Within a range of 150 metres, a radar sensor behind the grille and a digital camera behind the windscreen continuously monitor the distance to the vehicle driving in front of you. If the vehicle suddenly brakes (or is stationary) and Collision Warning senses that a collision is likely to happen, it will alert you to act with a flashing red warning light on the windscreen along with an audible alarm. Moreover, this technology supports driver-initiated braking by pre-charging the brakes to quickly prepare for panic braking and help shorten the reaction time. If you don't react to the warning and a collision is imminent, the brakes will activate automatically.

\* Part of Collision Avoidance System and included in optional Technology Package

## SAFETY Preventive



### Driver Alert Control (DAC)\*

Up to 90% of all traffic accidents are caused by driver distraction. Driver Alert Control is a unique technology that can help alert a tired or distracted driver at speeds over 65 km/h. Using signals from a digital camera to monitor the road ahead along with data from steering wheel movements, DAC can compare erratic behaviour to your normal driving style. If DAC detects that you begin to drift within your lane, you receive an audible warning. At the same time, a message is displayed in the instrument panel suggesting it might be time for a break.

\* Part of Collision Avoidance System and included in optional Technology Package



### Lane Departure Warning (LDW)\*

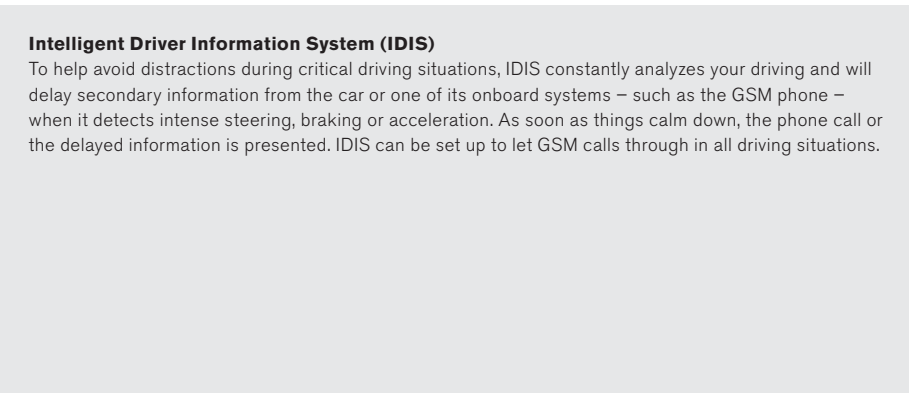
At speeds over 65 km/h, Lane Departure Warning can help prevent single-vehicle road departures as well as collisions caused by temporary distraction. This function uses the digital camera to register the lane markings and help monitor the car's position on the road. If you weave out of your lane, LDW will alert with an audible signal. If you intentionally cross a lane marker using the direction indicators, LDW is not activated.

\* Part of Collision Avoidance System and included in optional Technology Package



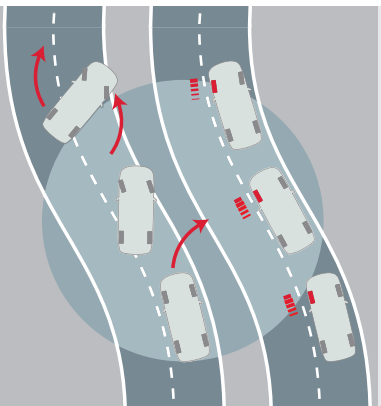
### Adaptive brake light

Active at speeds above 50 km/h, the adaptive brake light can sense the difference between normal and panic braking. If it is a panic situation, all the brake lights will flash at a rate of four times per second. Once your speed slows to below 30 km/h, the lights stop flashing and hazard lights flash instead.



### Intelligent Driver Information System (IDIS)

To help avoid distractions during critical driving situations, IDIS constantly analyzes your driving and will delay secondary information from the car or one of its onboard systems – such as the GSM phone – when it detects intense steering, braking or acceleration. As soon as things calm down, the phone call or the delayed information is presented. IDIS can be set up to let GSM calls through in all driving situations.



### Dynamic Stability and Traction Control (DSTC)

By helping prevent fishtails, spinouts, and rollovers, stability control technology like DSTC has been described as one of the most vital safety advances of the past decade. At the core of DSTC, a gyroscope senses the car's direction and compares this with steering wheel movements as well as the actual rotation of the car's wheels. DSTC is able to detect a potential skid and help counteract this by reducing the engine's power output, or braking on one or more wheels.



### Active Bending Lights (ABL)\*

In addition to improving illumination by using Dual Xenon light technology, the Active Bending Lights give a boost to your vision round bends at night. Controlled by micro-processors, the motorised lamps turn up to 15 degrees in either direction when driving – reliably lighting up your chosen path. A twilight sensor disengages the adaptive function during daylight to extend its life span.

\* Included with Dual-Xenon Lights





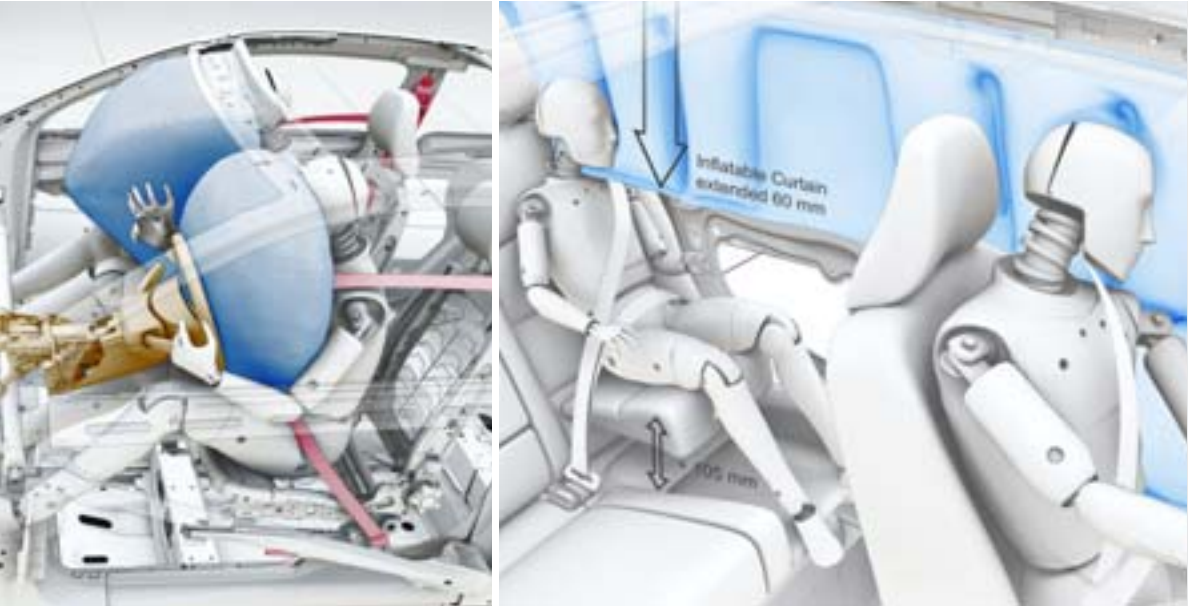
In a Volvo, safety is about interaction. Because it's not the number of safety features that determines how safe a car is. It's how well they seamlessly interact to help keep the occupants out of harm's way.

**In a rear impact** the rear deformation zones will help absorb crash energy. The fuel tank is designed to remain well protected in front of the rear axle. The head restraints help protect the neck and spine, and Volvo's unique Whiplash Protection System (WHIPS) cradles the front seat occupants in a controlled manner to help prevent whiplash injuries.

**In a side impact** Volvo's unique Side Impact Protection System (SIPS) helps distribute the crash forces across the car's body, away from the occupants. The dual-chamber side airbags in the front seats help protect the chest and hip, while the Inflatable Curtain (IC) adds head protection.

**In a roll-over** the robust safety cage and the reinforced roof structure together with the safety belts and belt pre-tensioners will help protect the occupants. If the car first has been hit from the side, the Inflatable Curtain (IC) deploys to help provide head protection.

**In a frontal collision** the patented frontal structure will yield to help absorb and disperse crash energy. The compact power train is designed to help optimize deformation. Inside the car, safety belts interact with the collapsible steering column and dual-stage airbags to help keep the occupants out of harm's way. A lower cross member helps protect occupants in an oncoming car with lower positioned bumpers.



**Restraint technologies**

In a collision, Volvo's restraint technologies interact to help reduce the impact. The **safety belts with pre-tensioners** activate within a few thousandths of a second in the event of a collision and tighten the belt to help keep the occupants securely restrained. The front seat safety belts then release a little so that the driver and passenger are cushioned by the airbags in a controlled manner. Helping to optimise protection, the **dual-stage airbags** adapt the level of inflation depending on the force of the collision. The driver's airbag also interacts with the deformation of the collapsible steering column.

**Dual-chamber side airbags** in the front seats help reduce the risk of serious injuries in a side collision. Two separate chambers are inflated at different pressures to help optimise protection of the chest and hip on the front seat occupants. The **Inflatable Curtain (IC)** helps protect the heads of both front and rear outboard occupants. It also stays inflated for some seconds to provide prolonged protection for subsequent impacts.



**Whiplash Protection System (WHIPS)**

Integrated in the front seats, Volvo's WHIPS cradles the occupant to help reduce the risk of whiplash injury (one of the most common types of traffic injury and often the result of a low-speed rear impact collision). The function is activated by a collision of sufficient force from behind. Independent research has shown that WHIPS is one of the most effective systems in the world and can reduce the risk of long-term invalidity by 50%.

**Energy-absorbing frontal structure**

In developing this Volvo's protective qualities, we have focused on frontal collisions at both higher speeds and with heavier vehicles. The patented frontal structure with its sizeable deformation zones in different kinds of steel will yield to help absorb crash energy. The compact power train is designed to help optimise deformation. The unique geometry of the frontal structure and longitudinal steel struts in the doors help disperse crash energy away from the front to the rear of the car, further helping to reduce the strain on the occupants. A steel strut under the dashboard further helps keep the cabin intact.

**Side Impact Protection System (SIPS)**

SIPS is a Volvo unique safety system that has been developed to help protect where occupants are most exposed to the crash forces. The steel framework of the car – including the front seats – is designed and reinforced to help displace the impact of a side-collision away from the occupants to other parts of the car body and help prevent intrusion into the cabin. The extremely strong side structure is built-up with ultra-high strength steel and softer grades of steel to help withstand a severe side impact – even with a larger vehicle. The Inflatable Curtain (IC) for all the outboard occupants and the front seat dual-chamber side airbags interact to help provide further protection. In the rear seat, the combination of extended IC and Volvo's integrated two-stage booster cushion with progressive safety belt load limiters helps protect children.



**SAFETY** Security

Your car is locked.

There's somebody inside your car.

The alarm has been triggered.



Your car is unlocked.

Press here to see the actual status of your car (within a range of 60–100 metres or the car's status when you left it (outside the range)).

**Personal Car Communicator (PCC)\***  
The optional PCC is an advanced remote control that combines keyless drive with two-way communication with your Volvo. Keep the PCC with you and the car unlocks automatically as you pull the door handle. Start the engine by pressing a button on the dash, lock the car by pressing a button in the door handle. Later in the day, if you're wondering whether you've locked the car, PCC can remind you; no matter where you are. On your return to the car – within a radius of 60–100 metres – pressing the PCC information button will give you a current report on its status. If the alarm has been activated, the onboard heartbeat sensor will give you advanced warning if there's somebody in your car and an opportunity to evaluate the situation safely.

\* Standard V8 AWD, included in Technology Package T6



**Power retractable door mirrors with ground lighting\***  
At the touch of a button, these door mirrors can be folded flat against the car where they are less likely to get damaged after you've parked. They also fold or unfold automatically every time you lock or unlock the car. The integrated ground lighting is activated with the remote control or with the PCC. Beyond enhancing security to and from your car at night, this is also convenient when getting in and out.

\* Standard T6 and V8



**HomeLink\*\***  
With buttons integrated in the sun visor, HomeLink® allows you to operate remote controlled home appliances – such as garage door, home alarm and exterior lighting – without leaving the car.  
  
HomeLink is a registered trademark of Johnson Controls Technology Company.

**Approach and Home Safe Lighting**  
Activated with the remote control or Personal Car Communicator, Approach Lighting provides a warm reception on a dark night. This consists of interior and side lights – ground lighting too, if you choose it. Home Safe Lighting is activated with the headlight stalk as you leave the car and it provides a similar courtesy when exiting your car. This feature includes a dipped beam from the headlight to accompany you to your door.

**COMFORT**

A Volvo is always designed for more than one. Our technology aims to enhance the feel-good factor for everybody with the privilege of riding in a Volvo. And to further improve comfort and convenience, there's a range of clever equipment – customized for your Volvo and the people inside it.



**COMFORT** Seats

**Ergonomic design**

**Integrated coat hanger**

**Oeko-Tex Standard 100 compliant upholstery**

**Adjustable lumbar support**

**Multiple adjustment possibilities**

**Front pocket**



**Power front seats**  
Find your perfect driving position with push-button ease. The driver's seat also incorporates a memory function that stores three separate seat and door mirror settings connected to a specific remote control – a feature that's appreciated when the car has several drivers.

**Heated front seats\***  
Adjustable in three settings, heated seats for the driver and front seat passenger add to comfort on those cold mornings.  
  
\* Included in optional Climate Package and optional Premium Package 3.2, standard T6 and V8

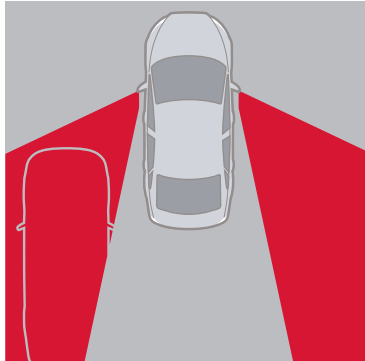


# TECH & SOUND

Employing the latest information technology, your Volvo is prepared to support and entertain you at a very high level. Surround yourself and your friends with world-class sound and enjoy the innovations that help ensure your command of the road and the pleasure of travelling.



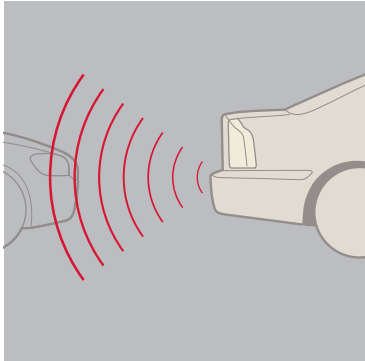
TECH & SOUND Driver's support



**Blind Spot Information System (BLIS)\***

BLIS uses rear-facing cameras installed in the door mirrors to keep a lookout on either side of the car. As a vehicle enters your blind spot, this function can alert you with a lamp built in to the front door post – left or right. Together with the door mirrors, this helps you assess the feasibility of a lane change. BLIS is activated once the car exceeds 10 km/h, and reacts to almost any type of vehicle from a motorcycle upwards, day or night.

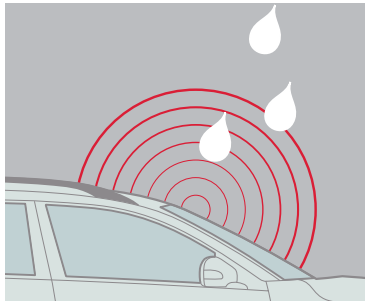
\* Optional T6 and V8



**Front and rear park assist**

Activated when you engage reverse gear, rear park assist helps you when reversing into tight spaces. The audio system is turned down and a pulsating sound from the rear loudspeakers becomes a continuous tone as you approach an obstacle. Front park assist performs a similar function at the front of the vehicle – alerting you via the front loudspeakers. The remaining distance is also shown on the audio display.

\* Standard T6 and V8




**Rain sensor\***

Once activated, the rain sensor can start the windscreen wipers as soon as it begins to rain or if water splashes onto the windscreen. It can also automatically adapt the intermittent windscreen-wiper function. Its sensitivity can be adjusted via a ring on the wiper stalk.

\* Standard T6 and V8

**Automatically dimmed inner rear-view mirror**

This is a mirror that automatically adjusts itself to deflect the headlamp beams of the car behind you. When there's no light to dazzle you, it automatically readjusts to its normal setting and includes an integrated compass



**Park Assist Camera\***

If the car is equipped with the optional navigation system, the park assist camera helps display what's going on behind your car when reversing. The system uses the navigation screen and a camera discretely located over the license plate. On-screen guiding lines provide extra assistance for smooth parking.

\* Retailer installed Accessory

**Electric Parking Brake**

The Electric Parking Brake (EPB) makes moving off from steep gradients easier. Once depressed, the control lever automatically releases as the car pulls away.

TECH & SOUND Communication



**Volvo Navigation System with RTT (Real Time Traffic) and Map Care\***

Volvo's navigation system is totally integrated with your car. It offers both voice guidance and graphic navigation all the way to your destination. The system is easily controlled from the steering wheel or a remote, and the screen is positioned so you can keep your attention on traffic. Two complimentary Map Care updates are included.


Maps do not cover all areas or all routes within an area. Also constant expansion and rebuilding of the road network mean that the digital map database is not always the latest road information. Always follow relevant regulations and road information.

\* Optional



**Integrated Bluetooth® handsfree system**

Bluetooth® technology enables a mobile phone to be connected to the infotainment system in your Volvo – wirelessly. Once configured for a mobile phone, the system automatically recognizes your phone as you enter the car. You then operate your phone using the buttons in the steering wheel. As you climb in and out of the car, the system automatically allows you to switch freely from the phone to the hands-free system and back again.

 The Bluetooth word mark and logos are owned by the Bluetooth SIG, Inc. and any use of such marks by Volvo Car Corporation is under license. Other trademarks and trade names are those of their respective owners.

TECH & SOUND Audio/Entertainment



**Rear Seat Entertainment (RSE) dual screen\***

With Volvo's new generation DVD-based RSE dual screen, the rear seat passengers can enjoy a film or play a game – together or separately. Two 8-inch widescreen displays are integrated in the front seat head restraints and provide excellent image quality. Wireless headphones keep things calm in the cabin and you can listen to the music or program of your choice. Via an AUX input, you can also connect external devices such as an iPod®, MP3 player, extra DVD player or a digital camera. The RSE system is an integrated part of the car. It matches the interior perfectly and is available with all upholsterys.

\* Optional T6 and V8

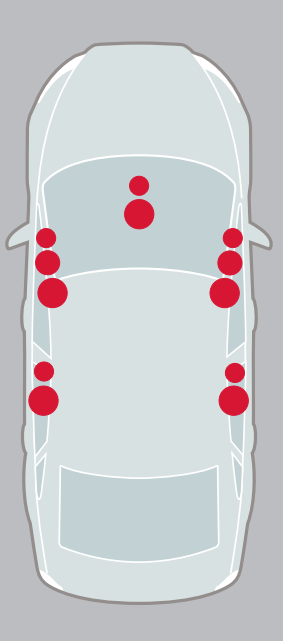




**MP3 compatibility**

There are a number of ways to enjoy MP3 music files in your Volvo. If you'd like to connect your personal MP3 player to the audio system, there's a standard auxiliary audio input in the front centre armrest. Volume is conveniently controlled from the steering wheel, centre console or rear seat audio console. Choosing the High Performance or Premium Sound audio system, there's also a USB port that allows you to fully integrate your iPod®, MP3 player or USB device with the audio system. Playlists, songs and artists are clearly displayed in the centre console, while your player will be charged at the same time. These audio systems also feature a MP3 and WMA compatible CD player. For the Performance audio system, you can add a separate USB and iPod® Music Interface (accessory) to connect your MP3 player.

iPod is a trademark of Apple Computer Inc.



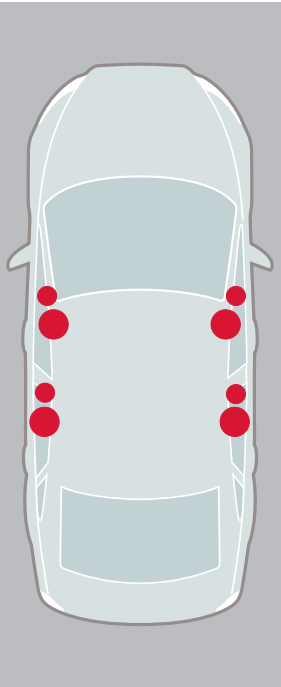
**Dynaudio Premium Sound System\***

This is our top-of-the line audio system designed for dynamic clarity with the entire sound spectrum. This system features twelve loudspeakers by Dynaudio – a world leader in loudspeaker technology. In addition, Dolby® Pro Logic® II surround sound helps tailor a well-balanced audio experience for each occupant. Premium Sound includes:

- HD Radio
- Steering wheel integrated controls
- Sirius satellite radio with complimentary six month subscription
- MP3 and WMA compatible CD player
- USB and AUX input in front centre armrest
- 5x130 W digital class D amplifier
- Dolby® Pro Logic® II surround sound with centre loudspeaker and digital sound processor
- 12 high-end loudspeakers by Dynaudio
- Rear seat headphone jacks and audio controls

Dolby, Pro Logic, and the double-D symbol are registered trademarks of Dolby Laboratories.

\* Standard V8, included in optional Technology Package T6

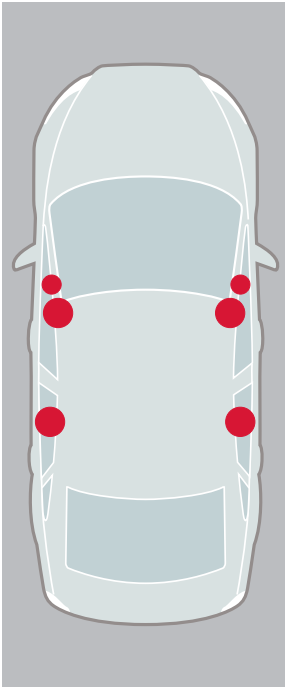
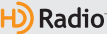


**High Performance audio system\***

This is a powerfully versatile system. Each loudspeaker is fitted with a powerful magnet and a large coil. In combination with the amplifier, this system promotes excellent transient reproduction and high power – quite simply superb sound. This High Performance system includes:

- HD Radio
- Steering wheel integrated controls
- MP3 and WMA compatible CD player
- USB and AUX input in front centre armrest
- 4x40 W amplifier
- 8 High Performance loudspeakers

\* Standard T6 and V8



**Performance audio system\***

A console-integrated radio and CD player. It sounds good, looks good and it's easy to use. Performance equipment includes:

- RDS radio
- CD player
- AUX input in front centre armrest
- 4x20 W amplifier
- 6 loudspeakers

\* Standard 3.2



**Dynaudio loudspeakers**

The twelve high-end loudspeakers by the Danish sound specialist Dynaudio in the Premium Sound system are powered by a 5x130 W digital amplifier. There are three separate speakers – woofer, tweeter and midrange – in each front door and in the rear doors there is a similar set-up with tweeter and woofer/midrange. Each speaker has a crossover filter to maximize fidelity. The latest generation Dolby® surround system with a centre loudspeaker and sound processor recreates authentic sound with a strong sense of presence for everyone in the car – a Volvo world first. The digital class D amplifier features new technology to provide extremely high efficiency, enabling it to generate the most audio power from the least amount of current.



**Sirius satellite radio**

Satellite radio is now available for your Volvo.

Volvo has joined forces with Sirius to offer an integrated satellite solution that is sure to provide endless listening enjoyment.

# PACK & LOAD

A world champion in versatility, Volvo has a proud heritage in providing smart solutions for both cargo and passengers – without compromising safety or comfort. So whatever you need to expand your world and the capabilities of your Volvo, here you'll find some practical equipment to make it happen.



**PACK & LOAD** Compartment

**Two-split 60/40 rear seat**

Ergonomically designed rear seats provide generous support for the body during long journeys. Rear seat relaxation is further enhanced with generous legroom. For extra loadspace, just fold down part or all of the two-split rear seat. And if you want to carry extra-long items without folding the rear seat, there's a convenient hatch in the rear centre armrest.

**Foldable front seat backrest**

To help you carry long objects inside your Volvo, the front passenger seat backrest can be conveniently folded flat.



**Grocery bag holder\***

This integrated holder folds up from the boot floor to create an easily accessible space for shopping bags, sport bags and other gear – secured with hooks or an elastic strap. To gain access to the entire boot, just fold the holder flat into the floor.

\* Retailer installed accessory



**Shopping bag holder\***

A convenient solution to keep shopping bags from emptying themselves during the journey. Simply slip the handles of the bags over the sliding hooks under the back shelf.

\* Retailer installed accessory

**PACK & LOAD** Carrying/Towing



**Roof cargo carrying system**

To help you fully utilize the roof of your Volvo, we've developed a range of versatile cargo carrying accessories. This system is dimensioned to carry up to 100 kg. The factory-fitted attachment points in the car's roof make the cargo carriers easy to fit. Various load accessories – such as roof boxes and different holders for bikes, skis, surfboards and kayaks – can be attached to the cargo carriers to meet your needs. These accessories can be freely combined for flexibility and many are aerodynamically designed to help reduce fuel consumption and wind noise. And most of them can be locked with the same key, using Volvo's One-Key System.



**Square profile hitch\***

This robust detachable hitch is not only great for towing but can also be used to transport bikes, skis and other loads.

\* Retailer installed accessory





**ACCESSORIES** Volvo's accessories help to make your Volvo even more suited to your personal needs. They are the only ones that have been tested to meet Volvo's exacting safety, quality and environmental requirements. You can also rest assured they're a perfect match to the technology and design of your Volvo. For your added peace of mind, Volvo accessories installed by your authorized Volvo Retailer at time of new vehicle delivery are warranted for the same duration as your New Car Warranty.

**FOR DRIVING FREEDOM**

- Park assist, front and rear
- Parking assistance camera
- Sunroof wind deflector
- Volvo Handsfree with Bluetooth®

**FOR YOUR ENTERTAINMENT**

- 6 Disc in-dash CD changer
- Rear Seat Entertainment System with Dual DVD player
- Satellite Radio
- Volvo iPod® Aux Adapter
- Volvo USB/iPod® music player

**FOR PRECIOUS CARGO**

- Child activity bag
- Child mirror
- Padded neck cushion
- Rear centre armrest table
- Sun shades, rear doors
- Sun shades, rear window

**FOR YOUR LEISURE**

- Ashtray, front and rear
- Bike carrier
- Business bag organizer
- Canoe/Kayak carrier, roof mounted
- Cargo box

Dirt cover, rear bumper

Floor mats, rubber

Grocery bag holders

Integrated cooler

Load basket, roof mounted

Luggage compartment mats

Net pocket, side panel cargo compartment

Portable Electric cooler/hotbox

Roof Mounted "Load bar" carrying system

Ski/snowboard carrier

Sunglass holder

Surfboard carrier

Trailer hitch mounted bike carrier

Trailer hitch mounted load basket

Trailer hitch mounted ski carrier

Trailer hitch step

Trailer Hitch, 2" Square profile

Tunnel mat, second row seats

**FOR YOUR LOOKS**

- Aluminum wheels
- Chrome wheels
- Exterior chrome kit
- Footboard, mouldings, illuminated
- Interior décor panel kits
- License plate frames

Locking lug nuts

Valve stem caps

Wood steering wheel

**FOR UNEXPECTED SITUATIONS**

- Car cover
- Electric engine heater
- First aid kit
- Jumper cables
- Leather care kit
- Mud flaps, front and rear
- Warning triangle

**PERFORMANCE** Specifications

**EIGHT-CYLINDER ENGINE**

Eight-cylinder 4.4-litre all-aluminium engine. 60-degree V-configuration. Double overhead camshafts, 32 valves. Variable Valve Timing (VVT) and Variable Intake System (VIS). Electronic engine management system. Three-way catalytic converter with a heated oxygen sensor. Allied with an advanced all-wheel drive system and a six-speed Geartronic transmission, this highly compact V8 harmonizes perfectly with the agile character of the Volvo S80. The sophisticated engine design, boasting continuously variable valve timing and a variable intake system, promotes high performance, smooth running, and superior power from low rpm. The full torque potential of 325 ft./lbs. is delivered at 3950 rpm, while at only 2000 rpm the engine delivers 236 ft./lbs. From a standstill, 100 km/h is only 6.5 seconds away – there's ample power for passing other vehicles quickly and safely, as well as for long and comfortable trips. Advanced emission controls, featuring four catalytic converters, reduce harmful emissions beyond the standards required by current legislation, such California's strict ULEV II, making this V8 one of the cleanest in its class.

**Volvo S80 V8 AWD (311 hp)**

Engine type: 4.4-liter V8 engine  
Max power output: 311 hp at 5950 rpm  
Max torque: 325 lb/ft. at 3950 rpm  
Acceleration 0–100 km/h: 6.5 sec  
Top speed: 250 km/h  
Fuel consumption, litres/100 km, city: 14.0  
Fuel consumption, litres/100 km, highway: 9.0  
Environmental classification: ULEV II  
Transmission: Six-speed Geartronic automatic  
Fuel tank: 70 litres

**SIX-CYLINDER ENGINE**

Six-cylinder in-line 3.2-litre all-aluminium engine. Double overhead cam-shafts, 24 valves. Variable Valve Timing (VVT), Variable Intake System (VIS) and Cam Profile Shifting (CPS) on the intake camshaft. Electronic engine management system. Three-way catalytic converter with a heated oxygen sensor. This highly compact in-line six-cylinder engine meets high expectations in terms of performance, comfort and concern for the environment. The smooth running and responsive engine character provides a relaxed drive at all speeds. Advanced engine technology, such as a new intake system, helps increase torque over a wide speed range and ensures power at high rpm. And depending on your driving style and the situation, the intake valve train automatically switches between economy and performance modes to optimize efficiency. The engine's compact design aids safety performance in a frontal collision. The latest generation of fast response emission control technology ensures that the engine complies with stringent environmental standards such as California's ULEV II.

**Volvo S80 T6 AWD (281 hp)**

Engine type: 3.0-litre in-line six-cylinder engine with Twin-scroll turbo  
Max power output: 281 hp at 5600 rpm  
Max torque: 295 lb/ft. at 1500–4800 rpm  
Acceleration 0–100 km/h: 6.9 seconds  
Top speed, auto: 250 km/h  
Fuel consumption, litres/100 km, city: 13.8  
Fuel consumption, litres/100 km, highway: 8.6  
Environmental classification: ULEV II  
Transmission: Six-speed Geartronic automatic  
Fuel tank: 70 litres

**Volvo S80 3.2 FWD (235 hp)**

Engine type: 3.2-litre in-line six-cylinder engine  
Max power output: 235 hp at 6200 rpm  
Max torque: 236 lb/ft. at 3200 rpm  
Acceleration 0–100 km/h: 7.9 sec  
Top speed: 240 km/h  
Fuel consumption, litres/100 km, city: 12.7  
Fuel consumption, litres/100 km, highway: 7.8  
Environmental classification: ULEV II  
Transmission: Six-speed Geartronic automatic  
Fuel tank: 70 litres

**DRIVELINE**

Front wheel drive (V8 AWD and T6 AWD feature an electronically controlled all-wheel drive system). Transverse engine. Six-speed Geartronic automatic is standard. Geartronic – a responsive six-speed automatic for relaxed driving that also allows manual gear shifting so that you can maintain a lower gear to bring up the rpm, or provide the added assistance of engine braking.

**CHASSIS**

Front suspension with spring struts (McPherson), anti-dive and anti-lift function. Active multi-link independent rear suspension. Stabilizer bars front and rear. DSTC (Dynamic Stability and Traction Control). The rigid body enables optimal suspension performance, balanced handling and a high level of comfort. Front and rear suspension interact to provide stable braking and smooth steering. In a curve, the rear wheels have a slight steering facility for added stability and steering response. The DSTC system engages if either of the drive wheels begins to lose traction or if a skid is imminent.

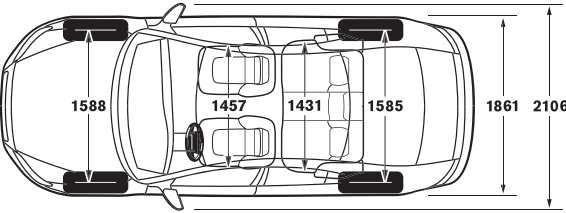
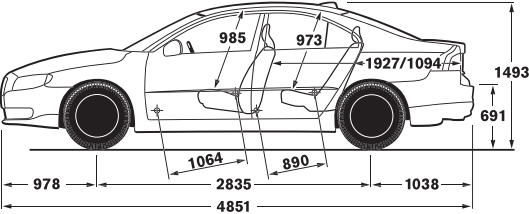
**STEERING**

Power-assisted hydraulic rack and pinion steering. Tilt and telescopic steering wheel column. 2.8 turns lock to lock. Turning circle 11.2–12.2 metres (depending on tires). Steering is responsive yet firm. The optional speed dependent power steering gives progressively less power assistance the faster you drive. Higher steering precision and enhanced road feedback are further benefits. At lower speeds, added power assistance makes the car even easier to manoeuvre, for instance when parking. Three different steering force levels can be selected in the car's information menu to suit different drivers and driving conditions.

**BRAKES**

Power-assisted anti-lock disc brakes (ABS), ventilated discs front. OHB (Optimized Hydraulic Brakes). HBA (Hydraulic Brake Assist). RAB (Ready Alert Brakes). FBS (Fading Brake Support). EBD (Electronic Brake Distribution) between the front and rear brakes. Diagonally split braking system. Generously dimensioned anti-lock disc brakes and optimized hydraulics help to ensure a short stopping distance in all situations. Furthermore, they withstand tough use without fading. HBA helps you use your brakes to the full in an emergency situation, while RAB anticipates severe braking and prepares for it by moving the brake pads closer to the discs. FBS automatically compensates for the higher pedal forces required after long periods of heavy braking. EBD distributes the braking effect between the front and rear wheels to achieve optimal results according to load and driving conditions.

See the 2010 Volvo Accessories brochure for a complete list of Volvo Accessories  
iPod is a trademark of Apple Computer Inc.





# Taking care of your ownership needs.

It's a simple idea; one point of contact for all your car ownership needs, whether it's finding the right financing or who to contact in an emergency. Get the most out of owning your Volvo – trust Care by Volvo.

### Volvo Car Financial Services Canada

If you purchase or lease your Volvo through Volvo Car Financial Services Canada, you can take advantage of services designed to make financing simple and convenient. Quick debit, for instance, enables you to have your monthly payment automatically debited from a designated bank account.

### Care by Volvo® On Call roadside assistance

Whenever you need us, we're just a phone call away. Our nationwide network of retailers and authorized service providers are ready to assist. Whether you require roadside assistance or maps and routing information for your next trip, refer to your On Call Card and dial 1 (800) 263-0475 – anytime, day or night. Your complimentary 48 month membership activates the moment you become a Volvo owner.

### Volvo new car warranty

Your new car warranty provides comprehensive coverage for 48 months or 80,000 km, whichever occurs first. Additional warranties cover corrosion, seat belts, the supplemental restraint system, emission systems, genuine Volvo replacement parts and genuine Volvo accessories. Should you encounter any problem with your Volvo, simply contact the nearest retailer for assistance. Where your warranty ends, Volvo Increased Protection (VIP) plans begin. To purchase the additional protection of a VIP plan, contact your local retailer.

### Volvo genuine service

The best way to ensure superior performance year after year is to bring your Volvo to your authorized retailer for regular maintenance. Our service advisors and factory-trained technicians are uniquely qualified to maintain your automobile. With the aid of advanced Volvo diagnostics, they follow all prescribed factory maintenance outlined in your service interval manual. Genuine Volvo service is our ongoing commitment to you: to keep your Volvo performing smoothly long after other cars have given up.

### Canadian Fleet Sales

Volvo Cars of Canada is committed to providing your organization with a Premium Fleet Experience. Our core values of safety, quality and environmental care are the essence of our brand, and our dedication to these values allows us to build world-class automobiles that meet the needs of today's demanding fleet decision-makers and drivers. Our Premium Fleet Experience enhances customer treatment and satisfaction by providing consistent order-to-order delivery times with priority order placement at the factory, direct-order relationships with major fleet leasing companies, and premium courtesy delivery via a Volvo Retailer that is convenient to the driver's location. Each Volvo offers a unique driving experience. We trust the Volvo you choose to best fit your fleet needs is better than anything you've driven before. For Sales people, Managers or Executives, Volvo range offers a large selection of models that perfectly matches your drivers' needs.

For more information, please contact us at:  
Fleet Sales: 416-4933700 ex 5208  
Fax: 416-4938754  
Email: [canfleet@volvocars.com](mailto:canfleet@volvocars.com)

# Volvo Overseas Delivery.

Volvo Overseas Delivery offers a unique way to buy your new custom-built car as well as a unique way to see more of Europe. And when you're done travelling, bring the pleasure of driving a Volvo back home. Purchase any new Volvo as part of the Volvo Overseas Delivery Program and enjoy all this – and more:

- Attractive pricing on Canadian models.
- Two complimentary round-trip tickets with Scandinavian Airlines.
- One free hotel night in Gothenburg, Sweden, the home of Volvo.
- An exciting Volvo Factory Tour or a visit to the new Volvo Cars Safety Centre.
- An exclusive VIP delivery experience at the Volvo Factory Delivery Centre.

- The opportunity to explore Europe in the comfort and safety of your own Volvo, either with one of our spectacular tours or on your own.
- Extensive complimentary home shipment services. Just leave your car with us. We'll ship it to you the convenient way while you relax and enjoy your complimentary flight back home.

Can you think of a better way of travelling overseas and making your souvenir part of an unforgettable experience?

If you would like to know more, contact a national customer service representative in Canada 1 (800) 663-8255 or visit [www.volvocanada.com/Services/EuropeanDelivery](http://www.volvocanada.com/Services/EuropeanDelivery)

# Meet the family.

S



**Volvo S40** The compact and energetic sedan.



**Volvo S80** The premier sedan, meticulously engineered for superior driving comfort.

V



**Volvo V50** The Sportswagon – flexible, compact and full of zest.



**Volvo V70** The genuine family wagon – highly competitive yet comfortably versatile.

XC



**The new Volvo XC60** The Swedish luxury crossover experience.



**Volvo XC70** The rugged yet stylish all-roader.



**Volvo XC90** The versatile SUV that takes you anywhere with grace.

C



**Volvo C30** The compact and charismatic Sports Coupe.



**Volvo C70** A convertible when you want it.



**Volvo C70** A coupe when you need it to be.

# To live life is to care about it.

Every moment in a Volvo is a moment designed to celebrate life. A life full of twists and turns, ups and downs; the little things as well as the big ones. Of course, to live life to its fullest isn't just about you; caring for others is important as well.

For more than eighty years we have helped save lives on roads around the world. Nevertheless, when it comes to improving automotive safety, we will never be satisfied. And while we're seeking new solutions, our existing safety systems are preventing many accidents from happening and providing some real protection when they do.

Our passion for life means looking after our children's children, too. Which is why we try to balance the needs of our company with those of society. With this bigger picture in mind, we develop engines and technology that have less impact on mother earth. This approach also explains why we pay so much attention to your immediate environment – in the car. Simply put, we care about you – and the whole circle of life.

**Please note:** This brochure provides a brief introduction. Some of the information may be incorrect due to possible product changes since printing. Some of the images may be of models and equipment not available in all markets. Before ordering, please ask your Volvo dealer for the latest information. The manufacturer reserves the right to make changes at any time, without notice; to prices, colours, materials, specifications and models.



Volvo. for life

**VOLVO**  
Volvo Car Corporation



**Mixed Sources**  
Product group from well-managed  
forests, controlled sources and  
recycled wood or fiber

Cert no. SGS-COC-003959  
www.fsc.org  
© 1996 Forest Stewardship Council

**WWW.VOLVOCANADA.COM**

Specifications, features, and equipment shown in this catalogue are based upon the latest information available at the time of publication. Volvo Cars of Canada Corp. reserves the right to make changes at any time, without notice, to colours, specifications, accessories, materials, and models. For additional information, please contact your authorized Volvo retailer.

© 2009 Volvo Cars of Canada Corp. Printed in Canada on 100% recyclable paper. **MY10**