



HONDA



THE ALL-NEW

---

# 2013 ACCORD



## IT STARTS WITH YOU.

### **INTRODUCING THE ALL-NEW 2013 ACCORD.**

Every generation of Accord has been made with you in mind, and the latest is no different. Its stylish exterior has been completely redesigned for a bolder, more aggressive look. Its luxurious interior has been restyled to feel more spacious. It's equipped with advanced technology, like the all-new HondaLink,<sup>TM\*</sup> to keep you connected to the people and things you care about, while also having the safety features to help protect them. And, our all-new Earth Dreams<sup>TM</sup> technology that delivers exhilarating and efficient performance will rekindle your love of driving with every passing kilometre. The 2013 Accord. It's the car made better for you in every way.

\*Only compatible with certain devices. Standard data rates may apply.

A dark grey Honda Accord Sedan is shown from a front-quarter perspective, driving on a winding asphalt road. The car is in motion, with a blurred background of hills and a clear blue sky. The road has yellow double lines and a white shoulder. The car's headlights and grille are prominent.

SEDAN

## THE SEDAN THAT WOULDN'T EXIST WITHOUT YOU.

**YOU DESERVE A CAR THAT EXCEEDS YOUR EXPECTATIONS.**

The 2013 Accord Sedan was designed to do that, and so much more. The all-new exterior gives the vehicle a truly distinct and aggressive look. The engine has been re-engineered, with greater performance and efficiency through our all-new Earth Dreams technology. The Accord is the first Honda model in North America to offer an all-new 2.4-litre, direct-injection i-VTEC® 4-cylinder engine. There's also the option of a 3.5-litre i-VTEC® V6 engine. In addition, the 2013 Accord is our first sedan to offer an available 6-speed automatic transmission. But the firsts don't stop there. The Accord Sedan also has revolutionary new features, like the available LaneWatch™ blind spot display\*. And then there's the added comfort of knowing we've created all of these features with you in mind.

\*Does not replace driver's responsibility to exercise due care while driving.

A blue Honda Accord Coupe is shown from a front-three-quarter perspective, driving on a road. The background is a sunset or sunrise over a body of water, with a warm orange and yellow glow. The car's headlights and fog lights are on, and the wheels are blurred to suggest motion. The Honda logo is visible on the front grille.

COUPE

## THE COUPE DRIVEN BY YOU.

**WE BELIEVE THE BEST WAY TO MAKE A CAR  
IS TO KNOW THE PEOPLE WHO DRIVE IT.**

And that you shouldn't have to sacrifice on the famous Accord features and value to get the sporty style and performance of a coupe. This belief is what sparked this stylish redesign, improved performance and exceptional comfort. It's the kind of thinking that led to the all-new Earth Dreams technology, found in the Coupe's 2.4-litre, direct-injection i-VTEC 4 cylinder engine or the re-engineered 3.5-litre i-VTEC V6 engine. It's why you get total connectivity through the all-new HondaLink system. To put it simply, the 2013 Accord Coupe was made to give you everything you need and everything you want.

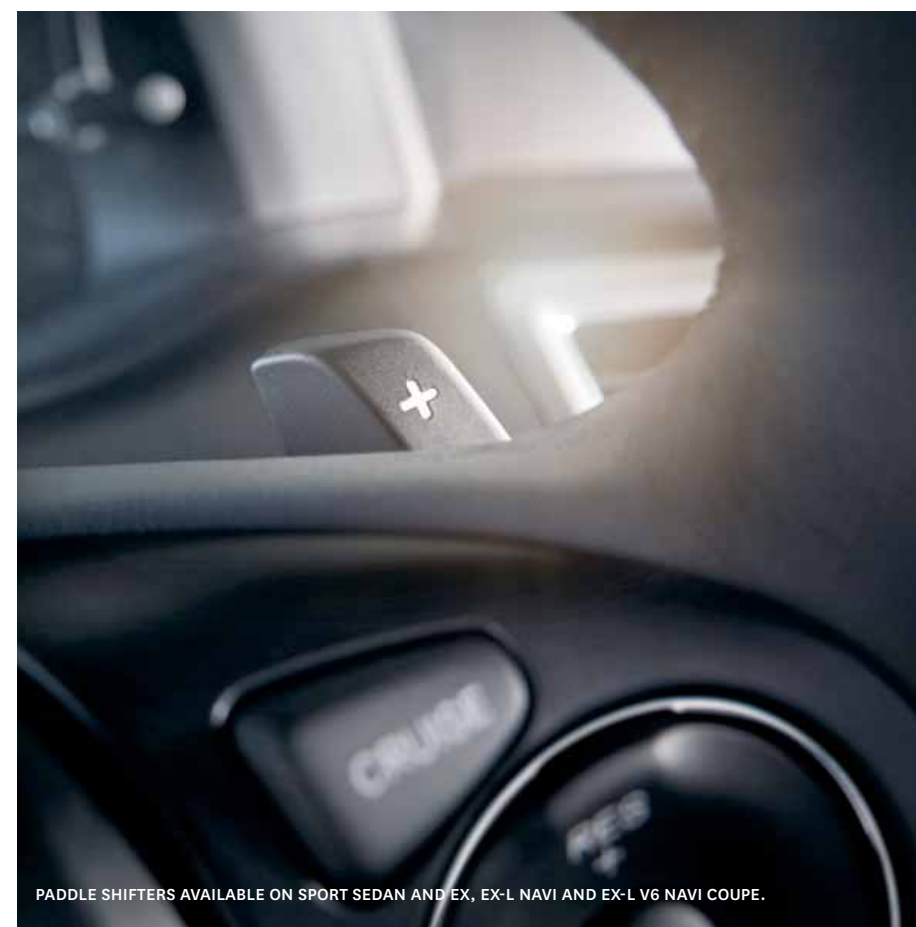


## PERFORMANCE

# PERFORMANCE CONTROLLED BY YOU.

### THE ACCORD PERFORMS THE SAME WAY WE CREATED IT: WITH PASSION.

It offers the choice of two all-new powertrains, each with their own exceptional level of performance. There's the more powerful, re-engineered 3.5-litre, 24-valve, SOHC i-VTEC V6 engine with 278 hp. Then there's the spirited 2.4-litre, 16-valve, direct-injection DOHC i-VTEC 4-cylinder engine with an available 189 hp. Both feature the first North American application of our new Earth Dreams technology, a revolutionary system based on the belief that a car with great efficiency should also have great performance. And for more immediate acceleration response, the available continuously variable transmission (CVT) offers a wider ratio range to provide the optimum gear ratio for the driving conditions, as well as a more natural driving feel. And with available paddle shifters, gear changes will seem even more responsive, providing greater control over the driving experience. All of these features ensure that when you drive the Accord, you'll feel the passion we put into it.



PADDLE SHIFTERS AVAILABLE ON SPORT SEDAN AND EX, EX-L NAVI AND EX-L V6 NAVI COUPE.

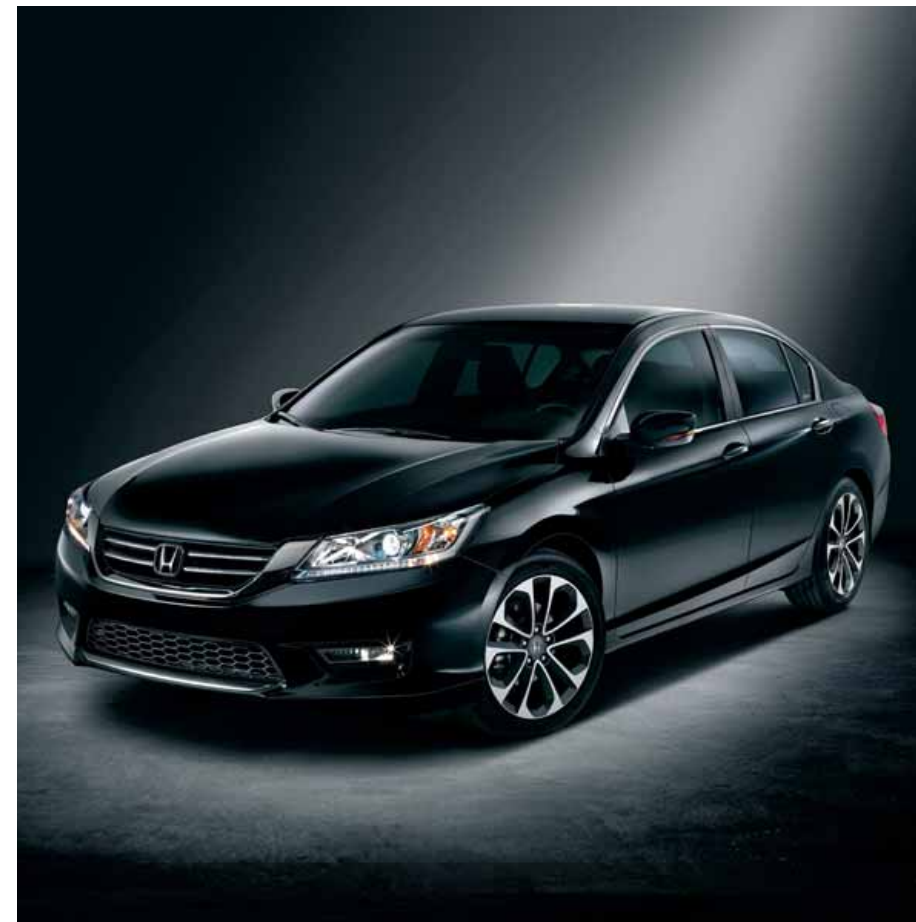



## STYLE

# STYLE SUITED TO YOU.

**THE ACCORD'S COMPLETELY RE-DESIGNED, SOPHISTICATED EXTERIOR DOESN'T JUST PLEASE THE EYES, IT THRILLS THEM.**

We sculpted the Sedan and Coupe with a bold, athletic look that suits the car's sporty driving character. The stylish exterior is further highlighted by a chrome grille, available chrome accents, and body-coloured door mirrors. The available projector-beam LED headlights and available LED daytime running lights, both Honda firsts, and available LED taillamps, give you as much style as they do function. Available 18" aluminum-alloy wheels combine with all of these design touches to give the Accord a profile that's completely distinct. Now, other drivers won't just notice that you've arrived, but what you've arrived in.



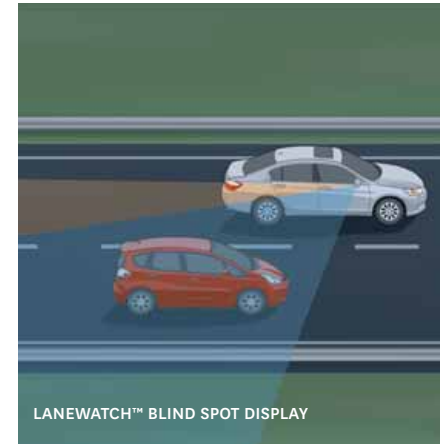
The image shows the interior of a car, likely a Honda Accord, with a focus on the front and rear seats. The seats are upholstered in dark leather with a subtle pattern. The dashboard and center console are visible, featuring a modern design with a touchscreen display and various controls. The overall atmosphere is one of luxury and sophistication.

LUXURY

## INSPIRED INDULGENCE.

**THE ACCORD'S ELEGANT INTERIOR INDULGES  
EVERY NEED OF DRIVER AND PASSENGER ALIKE.**

From styling to technology to amenities, the Accord is loaded with upgrades that give it a new level of sophistication. There's the standard luxury of heated front seats and the unexpected luxury of available heated rear seats. There's the control of the driver's seat with 8-way power adjustment, lumbar support and available seat position memory. There's the customizable comfort of the available dual-zone automatic climate control with air-filtration system. There's the soothing sounds of the available 7-speaker Premium audio system, which can be enjoyed to the fullest with Active Noise Cancellation (ANC) keeping outside noise at bay. And there's the unmistakable Honda craftsmanship of the available leather-trimmed seating surfaces and available leather-wrapped steering wheel. Take a seat in the Accord and indulge yourself on the road.



LANEWATCH™ BLIND SPOT DISPLAY



LANE DEPARTURE WARNING (LDW) SYSTEM



FORWARD COLLISION WARNING (FCW) SYSTEM

## TECHNOLOGY

# DRIVE ON THE CUTTING EDGE.

### TECHNOLOGY DOESN'T ALWAYS HAVE TO BE COMPLICATED.

In the new Accord, there's a host of cutting-edge technology to simplify your life and keep you in the loop, even when you're offline. The 8" i-MID LED backlit LCD TFT display lets you receive text messages\*\* and e-mails\*\* and answer back with preset replies without taking your hands off the wheel. It also provides a host of important vehicle information, like fuel efficiency, trip range plus audio and phone information. The HandsFreeLink™-bilingual Bluetooth® wireless mobile phone interface means you can stay on the line while your hands stay on the wheel. And you'll never lose your way with the available Honda Satellite-Linked Navigation System™ with trilingual Voice Recognition and 3D map display. You can do all of this while having a better view of the road with the available new LaneWatch™ blind spot display\*. This new Honda innovation uses a camera mounted on the passenger-side mirror, giving you enhanced viewing capability of approximately 80 degrees on your dashboard screen, enough to see two lanes of traffic in your passenger-side blind spot. You can also get a better view when you're in reverse with the standard rearview camera\* and available multi-angle rearview camera\*. And if that wasn't enough, there's the available proximity key entry system with pushbutton start right at your fingertips. With such abundant technology, the Accord lets you feel in sync with your life as well as the road. The Accord is the first Honda vehicle to feature the available Lane Departure Warning\* (LDW) and Forward Collision Warning\* (FCW) systems. The Lane Departure Warning system uses an onboard camera to monitor vehicle lane position. If you inadvertently drift out of your lane without using a turn signal, you will be alerted audibly and visually. Similarly, the Forward Collision Warning system uses an onboard camera to determine if the gap between you and the vehicle ahead is closing too quickly. If you're approaching with too much speed, the system uses audible and visual alerts so you can slow down. More firsts for Honda technology. But definitely not the last.

\*Does not replace driver's responsibility to exercise due care while driving.  
 \*\*Text message and e-mail functions are only compatible with certain devices.



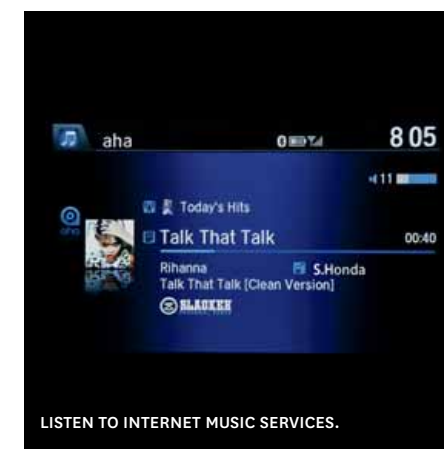


HondaLink WITH  
AUDIO TOUCH SCREEN

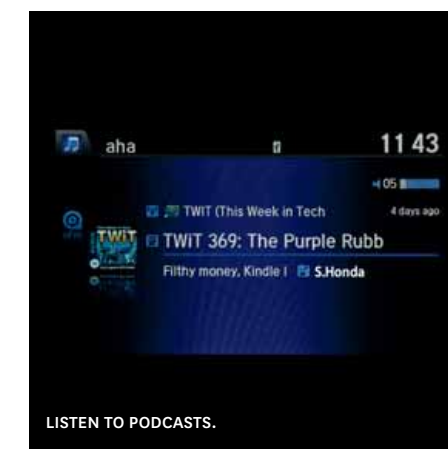
## YOUR LINK TO THE OUTSIDE WORLD.

**STAYING CONNECTED IS EASY IN  
THE 2013 ACCORD.**

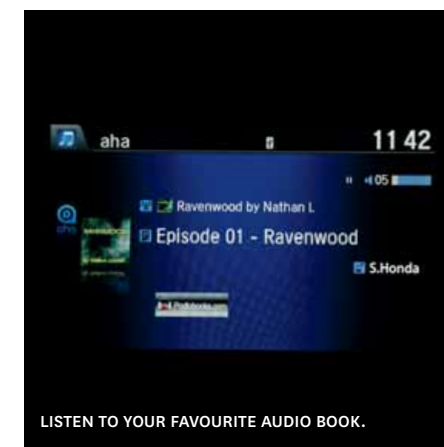
The all-new available HondaLink with audio touch screen keeps your Accord connected through Aha™ by HARMAN. Making its debut on the 2013 Accord, this cloud-based system lets you bring your favourite online news, music and entertainment along for the ride with minimal driver distraction. Simply download the HondaLink app, connect your compatible smartphone through the USB device connector or Bluetooth and you'll have access to internet music services, podcasts, audio books, restaurant recommendations, social networks and more. Even with all of these features, using HondaLink is easy. You can control it through voice recognition, your audio touch screen or conveniently placed steering wheel-mounted audio controls. Plus, the system incorporates flawlessly the standard HandsFreeLink-bilingual Bluetooth wireless mobile phone interface, text message and e-mail functions. No matter where you take your Accord, HondaLink featuring Aha connects you to the people, places and things that matter most.



LISTEN TO INTERNET MUSIC SERVICES.



LISTEN TO PODCASTS.



LISTEN TO YOUR FAVOURITE AUDIO BOOK.



RECEIVE AUDIBLE FACEBOOK NEWSFEEDS.



## EFFICIENCY

# THE FUTURE IS IN YOUR HANDS.

### EARTH DREAMS TECHNOLOGY

Not only is the 2013 Accord more thrilling to drive than ever, it's also our most fuel-efficient Accord yet. This is the first Honda in North America to feature our revolutionary Earth Dreams powertrain technology applied to an all-new generation of engines and transmissions. The engines now have reduced friction plus improved torque, while the available transmissions enhance acceleration and responsiveness through improvements such as wider ratios and sporty shift programming. Together, they offer improved fuel efficiency and fun-to-drive performance, all of it born from our desire to protect the environment and deliver an unforgettable driving experience.

There's an Earth Dreams 2.4-litre, 16-valve, direct injection DOHC, i-VTEC® 4-cylinder engine paired with either a 6-speed manual transmission or the new continuously variable transmission (CVT). A new 3.5-litre, 24-valve, SOHC, i-VTEC® V6 engine is also available on the Coupe and Sedan, paired to a new 6-speed automatic transmission or a 6-speed manual transmission (Coupe only). With Earth Dreams technology, you can still enjoy an exhilarating driving experience as well as improved fuel economy.



ECO ASSIST™ COACHES YOU TO DRIVE MORE EFFICIENTLY BY CHANGING THE COLOURED ARCS ON EITHER SIDE OF THE SPEEDOMETER.

### ECON + ECO ASSIST™

If that wasn't enough, the Accord's fuel efficiency is further enhanced by the ECON button and Eco Assist. With a push of the ECON button, your Accord goes into ECON mode and automatically adjusts its engine and other auxiliary systems to go from efficient to ultra-efficient. Eco Assist coaches you to better fuel efficiency as you drive. The white and green bars on either side of the speedometer indicate how efficiently you're driving, so you can adjust your driving style accordingly. The more you keep the bars green, the less gas you'll use. All of these efficiency-enhancing features were created because we believe in building vehicles that do as much as possible to respect the planet we share with you.

### ADVANCED VARIABLE CYLINDER MANAGEMENT® (VCM®)

The 2013 Accord is the most efficient Accord yet, with the help of its available VCM system. New for this year, it operates with 3 cylinders in a wider range of situations to maximize fuel efficiency and with 6 cylinders when greater power is needed.



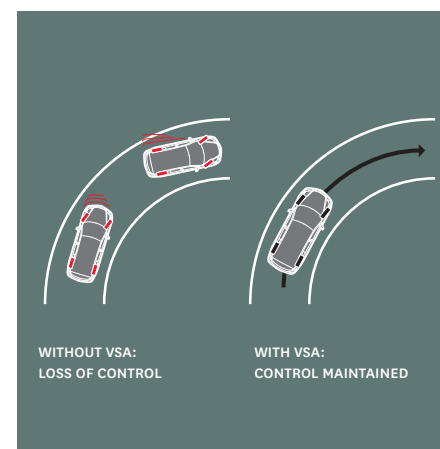


## SAFETY

# YOUR SAFETY IS OUR RESPONSIBILITY.

**AT HONDA, YOUR SAFETY HAS ALWAYS BEEN OUR HIGHEST PRIORITY.**

The 2013 Accord continues that proud tradition with a host of features like ACE™ body structure, Vehicle Stability Assist and Smartvent™ side airbags, designed to help keep you and your family safe.



### ACE™ BODY STRUCTURE

The Accord features a new Advanced Compatibility Engineering™ (ACE) body structure that disperses frontal impact energy to increase occupant protection. The ACE frame design also allows for collision compatibility between vehicles of different weights and sizes.

### STANDARD AIRBAGS

The Accord comes with six standard airbags, surrounding you with safety features. It features Smartvent side airbags, a Honda safety innovation designed to deploy safely in a manner that mitigates the risk of injury to smaller occupants. On top of all that, it's the first Honda to feature the new side curtain airbag with a wider deployment profile to enhance ejection mitigation.

### PEDESTRIAN SAFETY

Innovative pedestrian safety features include energy-absorbing hood and front fenders and breakaway wiper pivots.

### CONTROLLED BRAKING

For safer stopping, the 4-wheel Anti-lock Braking System (ABS) helps you maintain control under hard braking conditions, while Electronic Brake-force Distribution (EBD) helps to optimize braking power based on weight distribution inside the vehicle. In addition, Brake Assist further improves braking performance by applying full brake pressure when a panic stop is detected.

### VEHICLE STABILITY ASSIST (VSA®) WITH TRACTION CONTROL

Vehicle Stability Assist with Traction Control senses and corrects oversteer and understeer situations to enhance handling and cornering stability, while Traction Control helps to minimize wheel spin when accelerating on loose or slippery surfaces, helping to inspire greater driver confidence.

### CHILD SAFETY

The Accord features childproof rear door locks, as well as rear seat Lower Anchors and Tethers for Children (LATCH) for secure child-seat restraint.

### SEAT BELT SAFETY

Be prepared for the unexpected with 3-point height-adjustable seat belts with front pretensioners and a 3-point rear centre seat belt.

Honda reminds you and your passengers to always buckle up. Children 12 and under are safest when properly secured in the rear seat.

# SEDAN ACCESSORIES

## PACKAGES AND KITS

2013 ACCORD PROSTYLE PACKAGE  
(AS SHOWN 1)

- > All-weather floor mats
- > Illuminated door sill trim
- > Trunk tray
- > Grille trim

## PROTECTION PACKAGE

- > All-weather floor mats
- > Rear splash guards
- > Trunk tray

## FUNDAMENTAL PACKAGE

- > Cargo hooks
- > Cargo net

## REMOTE STARTER KIT

(AS SHOWN 2)

- > Remote engine starter base unit
- > Remote engine starter attachment  
– with/without pushbutton start

## OTHER ACCESSORIES AVAILABLE

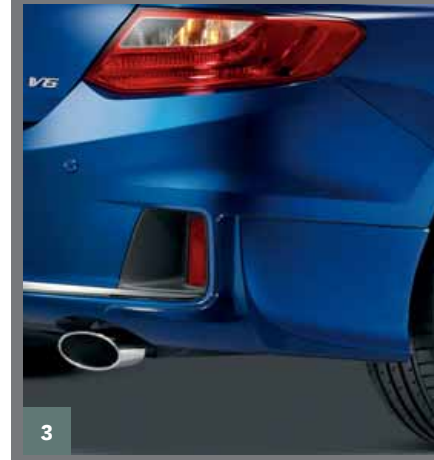
- > 17" alloy wheels SBC
- > Automatic day/night rearview mirror
- > Engine block heater
- > Fog lights
- > Interior illumination
- > Moonroof visor
- > Rear seat cover
- > Front/Rear/Side skirt
- > Rear wing spoiler
- > Trunk edge and bumper protector



1



2



3



4

# COUPE ACCESSORIES

## PACKAGES AND KITS

AERO KIT PACKAGE  
(AS SHOWN 3)

- > Front skirt
- > Side skirt
- > Rear skirt

ACCORD FUNDAMENTAL PACKAGE  
(AS SHOWN 4)

- > Cargo hooks
- > Cargo net

## PROTECTION PACKAGE

- > All-weather floor mats
- > Rear splash guards
- > Trunk tray

## REMOTE STARTER KIT

- > Remote engine starter base unit
- > Remote engine starter attachment

## OTHER ACCESSORIES AVAILABLE

- > 19" alloy wheels SBC
- > Body side moulding
- > Car cover
- > Deck lid spoiler
- > Door edge guards
- > Full nose mask
- > Illuminated door sill trim
- > Interior illumination
- > Rear backup sensor
- > Rear bumper appliqué

They're not just accessories, they're extensions of you.



# THE POWER OF DREAMS, IN ALL THEIR FORMS.

**AT HONDA, WE'RE COMMITTED TO BEING A LEADER IN INNOVATIVE THINKING,** from the design of our vehicles to the way we work. We have a proud tradition of turning ideas into products and initiatives that help make the world around us a bit brighter and a little more fun. We continually strive to do things others think can't be done, because true innovation comes from daring to dream. Here are just some of the technically ingenious things Honda has brought to life through The Power of Dreams.

- 1 THE FUEL-EFFICIENT HONDAJET
- 2 ASIMO™, THE ADVANCED LIFE-ASSISTING ROBOT
- 3 LEED® GOLD CERTIFIED MARKHAM HEAD OFFICE
- 4 MOTORCYCLES WITH RIDER-FOCUSED DESIGN
- 5 THE RUGGED, VERSATILE BIG RED
- 6 CLEANER MARINE PRODUCTS



**HONDA**  
The Power of Dreams

# ACCORD SEDAN



ACCORD EX-L V6 SEDAN

ENGINE	LX	SPORT	EX-L	TOURING	EX-L V6	TOURING V6
2.4-LITRE, 16-VALVE, DIRECT INJECTION DOHC, i-VTEC® 4-CYLINDER	•	•	•	•		
3.5-LITRE, 24-VALVE, SOHC, i-VTEC® V6					•	•
HORSEPOWER @ RPM*	185 @ 6400	189 @ 6400	185 @ 6400	185 @ 6400	278 @ 6200	278 @ 6200
TORQUE (LB.-FT. @ RPM)*	181 @ 3900	182 @ 3900	181 @ 3900	181 @ 3900	252 @ 4900	252 @ 4900
DISPLACEMENT (CC)	2356	2356	2356	2356	3471	3471
EMISSIONS RATING	TIER 2 BIN 5	TIER 2 BIN 5	TIER 2 BIN 5	TIER 2 BIN 5	TIER 2 BIN 5	TIER 2 BIN 5
BORE AND STROKE (MM)	87 X 99	87 X 99	87 X 99	87 X 99	89 X 93	89 X 93
COMPRESSION RATIO	11.1:1	11.1:1	11.1:1	11.1:1	10.5:1	10.5:1
ECOLOGICAL DRIVE ASSIST SYSTEM™ (ECO ASSIST™)	•	•	•	•	•	•
DRIVE-BY-WIRE THROTTLE SYSTEM™	•	•	•	•	•	•
MULTI-POINT PROGRAMMED FUEL INJECTION SYSTEM (PGM-FI®)	•	•	•	•	•	•
DIRECT INJECTION	•	•	•	•		
ADVANCED VARIABLE CYLINDER MANAGEMENT® (VCM®)					•	•
RECOMMENDED FUEL	REGULAR	REGULAR	REGULAR	REGULAR	REGULAR	REGULAR

\*HORSEPOWER AND TORQUE CALCULATIONS REFLECT SAE NET REV. 08/04, SAE J1349 PROCEDURES.

SEATING & TRIM	LX	SPORT	EX-L	TOURING	EX-L V6	TOURING V6
DRIVER'S SEAT POSITION MEMORY			•	•	•	•
DRIVER'S SEAT WITH 8-WAY POWER ADJUSTMENT AND LUMBAR SUPPORT	•	•	•	•	•	•
FLOOR MATS	•	•	•	•	•	•
FOLD-DOWN REAR SEATBACK WITH LOCK	•	•	•	•	•	•
FRONT PASSENGER'S SEAT WITH 4-WAY MANUAL ADJUSTMENT	•	•				
FRONT PASSENGER'S SEAT WITH 4-WAY POWER ADJUSTMENT			•	•	•	•
HEATED FRONT SEATS	•	•	•	•	•	•
HEATED REAR SEATS			•	•	•	•
LEATHER-TRIMMED SEATING SURFACES			•	•	•	•
LEATHER-WRAPPED STEERING WHEEL		•	•	•	•	•

CHASSIS	LX	SPORT	EX-L	TOURING	EX-L V6	TOURING V6
17" ALUMINUM-ALLOY WHEELS	•		•		•	
18" ALUMINUM-ALLOY WHEELS, PEWTER GREY, DIAMOND MACHINED FACE		•				
18" ALUMINUM-ALLOY WHEELS, BLADE SILVER, DIAMOND MACHINED FACE				•		•
ALL-SEASON TIRES	P215/55 R17	P235/45 R18	P215/55 R17	P235/45 R18	P215/55 R17	P235/45 R18
ELECTRIC POWER-ASSISTED RACK-AND-PINION STEERING (EPS)	•	•	•	•	•	•
FRONT STRUT TOWER BRACE	•	•	•	•	•	•
INDEPENDENT STRUT FRONT SUSPENSION	•	•	•	•	•	•
INDEPENDENT MULTI-LINK REAR SUSPENSION	•	•	•	•	•	•
POWER-ASSISTED, VENTILATED FRONT/SOLID REAR DISC BRAKES	•	•	•	•	•	•
STABILIZER BARS – FRONT AND REAR	•	•	•	•	•	•





ACCORD EX-L V6 SEDAN

COMFORT & CONVENIENCE	LX	SPORT	EX-L	TOURING	EX-L V6	TOURING V6
12-VOLT POWER OUTLET (2)	•	•	•	•	•	•
ACTIVE NOISE CANCELLATION (ANC)/ACTIVE SOUND CONTROL (ASC)	•	•	•	•	•	•
AIR CONDITIONING WITH AIR-FILTRATION SYSTEM	•					
DUAL-ZONE AUTOMATIC CLIMATE CONTROL WITH AIR-FILTRATION SYSTEM		•	•	•	•	•
AUTO-DIMMING REARVIEW MIRROR			•	•	•	•
AUTO-ON/OFF HEADLIGHTS	•	•	•	•	•	•
CARGO AREA LIGHT	•	•	•	•	•	•
CENTRE CONSOLE AND STORAGE COMPARTMENT	•	•	•	•	•	•
DRIVER'S AND FRONT PASSENGER'S ILLUMINATED VANITY MIRRORS	•	•	•	•	•	•
DRIVER'S AND FRONT PASSENGER'S SEATBACK POCKETS	•	•	•	•	•	•
EXTERIOR TEMPERATURE INDICATOR	•	•	•	•	•	•
FORWARD COLLISION WARNING (FCW) SYSTEM <sup>††</sup>			•	•	•	•
FRONT AND REAR BEVERAGE HOLDERS	•	•	•	•	•	•
FRONT AND REAR DOOR POCKETS	•	•	•	•	•	•
HANDSFREELINK™-BILINGUAL BLUETOOTH® WIRELESS MOBILE PHONE INTERFACE	•	•	•	•	•	•
HOMELINK® REMOTE SYSTEM <sup>‡</sup>					•	•
HONDA SATELLITE-LINKED NAVIGATION SYSTEM™ WITH TRILINGUAL VOICE RECOGNITION AND 3D MAP DISPLAY				•		•
ILLUMINATED DRIVER'S AND PASSENGER'S POWER WINDOW, DOOR LOCK AND MIRROR SWITCHES	•	•	•	•	•	•
LANE DEPARTURE WARNING (LDW) SYSTEM <sup>††</sup>			•	•	•	•
LANEWATCH™ BLIND SPOT DISPLAY <sup>††</sup>			•	•	•	•
MAP LIGHTS	•	•	•	•	•	•
REARVIEW CAMERA <sup>††</sup>	•	•				
MULTI-ANGLE REARVIEW CAMERA <sup>††</sup>			•	•	•	•
ONE-TOUCH TURN SIGNALS	•	•	•	•	•	•
POWER DOOR LOCKS	•	•	•	•	•	•
POWER WINDOWS WITH AUTO-UP/DOWN DRIVER'S WINDOW AND KEYLESS OPERATION	•	•				
POWER WINDOWS WITH AUTO-UP/DOWN DRIVER'S AND FRONT PASSENGER'S WINDOWS AND KEYLESS OPERATION			•	•	•	•
PROXIMITY KEY ENTRY SYSTEM WITH POWER TRUNK RELEASE, POWER WINDOW CONTROL AND PUSHBUTTON START			•	•	•	•
REMOTE ENTRY SYSTEM WITH POWER TRUNK RELEASE AND POWER WINDOW CONTROL	•	•				
REAR CONSOLE VENTILATION			•	•	•	•
REAR-SEAT CENTRE ARMREST WITH CUPHOLDER	•	•	•	•	•	•
REAR-SEAT HEATER DUCTS	•	•	•	•	•	•
SMART MAINTENANCE MINDER™ SYSTEM	•	•	•	•	•	•
STEERING WHEEL-MOUNTED CRUISE CONTROL	•	•	•	•	•	•
SUNGLASSES HOLDER	•	•	•	•	•	•
TEMPORARY SPARE TIRE	•	•	•	•	•	•
TILT AND TELESCOPIC STEERING COLUMN	•	•	•	•	•	•

<sup>††</sup> DOES NOT REPLACE THE DRIVER'S RESPONSIBILITY TO EXERCISE DUE CARE WHILE DRIVING.

<sup>‡</sup> HOMELINK CAN BE PROGRAMMED WITH CODES OF UP TO THREE REMOTE-CONTROL DEVICES (E.G., GARAGE-DOOR OPENER, HOME SECURITY SYSTEM, ETC.). ADDITIONAL CONTROL DEVICES NOT PROVIDED BY HONDA MAY BE REQUIRED.





ACCORD EX-L V6 SEDAN

EXTERIOR	LX	SPORT	EX-L	TOURING	EX-L V6	TOURING V6
BODY-COLOURED DOOR HANDLES	•					
BODY-COLOURED HEATED FOLDING POWER SIDE MIRRORS INCLUDING EXPANDED VIEW DRIVER'S MIRROR	•					
BODY-COLOURED HEATED FOLDING POWER SIDE MIRRORS WITH INTEGRATED TURN INDICATORS INCLUDING EXPANDED VIEW DRIVER'S MIRROR		•	•	•	•	•
CHROME DOOR HANDLES			•		•	
DARK CHROME DOOR HANDLES		•		•		•
CHROME GRILLE	•		•		•	
DARK CHROME GRILLE		•		•		•
DUAL EXHAUST WITH CHROME FINISHERS		•			•	•
FOG LIGHTS		•	•	•	•	•
FRONT SPLASH GUARDS	•	•	•	•	•	•
LED TAILLAMPS			•	•	•	•
POWER MOONROOF WITH TILT FEATURE			•	•	•	•
PROJECTOR-BEAM HALOGEN HEADLIGHTS	•		•		•	
PROJECTOR-BEAM LED HEADLIGHTS				•		•
REAR DECKLID SPOILER		•				
REAR WINDOW DEFROSTER	•	•	•	•	•	•
SPEED-SENSING, VARIABLE INTERMITTENT WINDSHIELD WIPERS	•	•	•	•	•	•

ENTERTAINMENT	LX	SPORT	EX-L	TOURING	EX-L V6	TOURING V6
8" i-MID (INTELLIGENT MULTI-INFORMATION DISPLAY)						
LED BACKLIT LCD TFT DISPLAY	•	•	•	•	•	•
AM/FM/CD AUDIO SYSTEM WITH MP3/WINDOWS MEDIA® AUDIO PLAYBACK CAPABILITY AND 6 SPEAKERS	•	•	•		•	
AM/FM/CD PREMIUM AUDIO SYSTEM WITH MP3/WINDOWS MEDIA® AUDIO PLAYBACK CAPABILITY AND 7 SPEAKERS INCLUDING SUBWOOFER				•		•
AUDIO ANTI-THEFT FEATURE	•	•	•	•	•	•
E-MAIL FUNCTION**	•	•	•	•	•	•
TEXT MESSAGE FUNCTION**	•	•	•	•	•	•
TWEETERS	•	•	•	•	•	•
HondaLink™ WITH AUDIO TOUCH SCREEN**▲			•	•	•	•
ILLUMINATED STEERING WHEEL-MOUNTED AUDIO CONTROLS	•	•	•	•	•	•
MP3/AUXILIARY INPUT JACK	•	•	•	•	•	•
USB DEVICE CONNECTOR	•	•	•	•	•	•
SIRIUSXM® CANADA SATELLITE RADIO*			•	•	•	•

\*INCLUDES A NO-CHARGE TRIAL OF 3 MONTHS, BEYOND WHICH SERVICE FEES APPLY. AVAILABLE IN 10 CANADIAN PROVINCES AND 48 CONTIGUOUS U.S. STATES. SEE TERMS AND CONDITIONS AT WWW.XMRADIO.CA OR WWW.SIRIUS.CA.

\*\*ONLY COMPATIBLE WITH CERTAIN DEVICES.

▲STANDARD DATA RATES MAY APPLY.

FUEL ECONOMY† (L/100 KM)	LX	SPORT	EX-L	TOURING	EX-L V6	TOURING V6
AUTOMATIC TRANSMISSION (CITY/HWY/COMBINED)					9.7/5.7/7.9	9.7/5.7/7.9
MANUAL TRANSMISSION (CITY/HWY/COMBINED)	8.7/5.7/7.4	8.7/5.7/7.4		8.7/5.7/7.4		
CONTINUOUSLY VARIABLE TRANSMISSION (CITY/HWY/COMBINED)	7.8/5.5/6.7	7.8/5.5/6.7	7.8/5.5/6.7	7.8/5.5/6.7		

†BASED ON 2012 ENERGIDE FUEL CONSUMPTION GUIDE RATINGS PUBLISHED BY NATURAL RESOURCES CANADA. TRANSPORT CANADA APPROVED TEST METHODS USED.

YOUR ACTUAL FUEL CONSUMPTION WILL VARY BASED ON DRIVING HABITS AND OTHER FACTORS – USE FOR COMPARISON ONLY.



ACCORD EX-L V6 SEDAN

### ACCORD LX SEDAN

185-HP, 2.4-LITRE, 16-VALVE, DIRECT INJECTION DOHC, i-VTEC® 4-CYLINDER ENGINE · 6-SPEED MANUAL TRANSMISSION (MT) · AVAILABLE CONTINUOUSLY VARIABLE TRANSMISSION (CVT) · 4-WHEEL ANTI-LOCK BRAKING SYSTEM (ABS) WITH ELECTRONIC BRAKE-FORCE DISTRIBUTION (EBD) AND BRAKE ASSIST · 17" ALUMINUM-ALLOY WHEELS · 8" i-MID (INTELLIGENT MULTI-INFORMATION DISPLAY) LED BACKLIT LCD TFT DISPLAY · ACTIVE NOISE CANCELLATION (ANC)/ACTIVE SOUND CONTROL (ASC) · AIR CONDITIONING WITH AIR-FILTRATION SYSTEM · AM/FM/CD AUDIO SYSTEM WITH MP3/WINDOWS MEDIA™ AUDIO PLAYBACK CAPABILITY AND 6 SPEAKERS · BODY-COLOURED DOOR HANDLES · BODY-COLOURED HEATED FOLDING POWER SIDE MIRRORS INCLUDING EXPANDED VIEW DRIVER'S MIRROR · CHROME GRILLE · DRIVE-BY-WIRE THROTTLE SYSTEM™ · DRIVER'S AND FRONT PASSENGER'S ILLUMINATED VANITY MIRRORS · DRIVER'S SEAT WITH 8-WAY POWER ADJUSTMENT AND LUMBAR SUPPORT · DUAL-STAGE, DUAL-THRESHOLD FRONT AIRBAGS (SRS) · E-MAIL FUNCTION\*\* · ECOLOGICAL DRIVE ASSIST SYSTEM™ (ECO ASSIST™) · ELECTRIC POWER-ASSISTED RACK-AND-PINION STEERING (EPS) · EXTERIOR TEMPERATURE INDICATOR · FRONT AND REAR BEVERAGE HOLDERS · FRONT PASSENGER'S SEAT WITH 4-WAY MANUAL ADJUSTMENT · HANDSFREELINK™-BILINGUAL BLUETOOTH® WIRELESS MOBILE PHONE INTERFACE · HEATED FRONT SEATS · ILLUMINATED STEERING WHEEL-MOUNTED AUDIO CONTROLS · INDEPENDENT STRUT FRONT SUSPENSION · INDEPENDENT MULTI-LINK REAR SUSPENSION · MP3/AUXILIARY INPUT JACK · POWER DOOR LOCKS · POWER-ASSISTED, VENTILATED FRONT/SOLID REAR DISC BRAKES · POWER WINDOWS WITH AUTO-UP/DOWN DRIVER'S WINDOW AND KEYLESS OPERATION · PROJECTOR-BEAM HALOGEN HEADLIGHTS · REARVIEW CAMERA†† · SECURITY SYSTEM · SIDE CURTAIN AIRBAGS · SMARTVENT™ SIDE AIRBAGS · TEXT MESSAGE FUNCTION\*\* · SPEED-SENSING, VARIABLE INTERMITTENT WINDSHIELD WIPERS · STEERING WHEEL-MOUNTED CRUISE CONTROL · TILT AND TELESCOPING STEERING COLUMN · TIRE PRESSURE MONITORING SYSTEM (TPMS) · USB DEVICE CONNECTOR · VEHICLE STABILITY ASSIST (VSA®) WITH TRACTION CONTROL

\*\*ONLY COMPATIBLE WITH CERTAIN DEVICES.  
††DOES NOT REPLACE THE DRIVER'S RESPONSIBILITY TO EXERCISE DUE CARE WHILE DRIVING.

### ACCORD SPORT SEDAN

#### ADDS TO OR REPLACES LX FEATURES:

189-HP, 2.4-LITRE, 16-VALVE, DIRECT INJECTION DOHC, i-VTEC® 4-CYLINDER ENGINE · AVAILABLE STEERING WHEEL-MOUNTED PADDLE SHIFTERS (WITH CVT, ON SPORT ONLY) · 18" ALUMINUM-ALLOY WHEELS, PEWTER GREY, DIAMOND MACHINED FACE · BODY-COLOURED HEATED FOLDING POWER SIDE MIRRORS WITH INTEGRATED TURN INDICATORS INCLUDING EXPANDED VIEW DRIVER'S MIRROR · DARK CHROME DOOR HANDLES · DARK CHROME GRILLE · DUAL EXHAUST WITH CHROME FINISHERS · DUAL-ZONE AUTOMATIC CLIMATE CONTROL WITH AIR-FILTRATION SYSTEM · FOG LIGHTS · LEATHER-WRAPPED STEERING WHEEL · REAR DECKLID SPOILER (ON SPORT ONLY)

### ACCORD EX-L SEDAN

#### ADDS TO OR REPLACES SPORT FEATURES:

185-HP, 2.4-LITRE, 16-VALVE, DIRECT INJECTION DOHC, i-VTEC® 4-CYLINDER ENGINE · CONTINUOUSLY VARIABLE TRANSMISSION (CVT) · 17" ALUMINUM-ALLOY WHEELS · AUTO-DIMMING REARVIEW MIRROR · CHROME DOOR HANDLES · CHROME GRILLE · SINGLE EXHAUST · DRIVER'S SEAT POSITION MEMORY · FORWARD COLLISION WARNING (FCW) SYSTEM†† · FRONT PASSENGER'S SEAT WITH 4-WAY POWER ADJUSTMENT · HEATED REAR SEATS · HondaLink™ WITH AUDIO TOUCH SCREEN\*\*\* · LANE DEPARTURE WARNING (LDW) SYSTEM†† · LANEWATCH™ BLIND SPOT DISPLAY†† · LED TAILLAMP · LEATHER-TRIMMED SEATING SURFACES · MULTI-ANGLE REARVIEW CAMERA†† · POWER WINDOWS WITH AUTO-UP/DOWN DRIVER'S AND FRONT PASSENGER'S WINDOWS AND KEYLESS OPERATION · POWER MOONROOF WITH TILT FEATURE · PROXIMITY KEY ENTRY SYSTEM WITH POWER TRUNK RELEASE, POWER WINDOW CONTROL AND PUSHBUTTON START · REAR CONSOLE VENTILATION · SIRIUSXM® CANADA SATELLITE RADIO

\*\*\*INCLUDES A NO-CHARGE TRIAL OF 3 MONTHS, BEYOND WHICH SERVICE FEES APPLY. AVAILABLE IN 10 CANADIAN PROVINCES AND 48 CONTIGUOUS U.S. STATES. SEE TERMS AND CONDITIONS AT WWW.XMRADIO.CA OR WWW.SIRIUSX.COM.

\*\*ONLY COMPATIBLE WITH CERTAIN DEVICES.  
††DOES NOT REPLACE THE DRIVER'S RESPONSIBILITY TO EXERCISE DUE CARE WHILE DRIVING.  
▲STANDARD DATA RATES MAY APPLY.

### ACCORD TOURING SEDAN

#### ADDS TO OR REPLACES EX-L FEATURES:

18" ALUMINUM-ALLOY WHEELS, BLADE SILVER, DIAMOND MACHINED FACE · AM/FM/CD PREMIUM AUDIO SYSTEM WITH MP3/WINDOWS MEDIA™ AUDIO PLAYBACK CAPABILITY AND 7 SPEAKERS INCLUDING SUBWOOFER · DARK CHROME DOOR HANDLES · DARK CHROME GRILLE · HONDA SATELLITE-LINKED NAVIGATION SYSTEM™ WITH TRILINGUAL VOICE RECOGNITION AND 3D MAP DISPLAY · LED DAYTIME RUNNING LIGHTS · PROJECTOR-BEAM LED HEADLIGHTS

### ACCORD EX-L V6 SEDAN

#### ADDS TO OR REPLACES EX-L FEATURES:

278-HP, 3.5-LITRE, 24-VALVE, SOHC, i-VTEC® V6 ENGINE · 6-SPEED AUTOMATIC TRANSMISSION (AT) WITH GRADE LOGIC CONTROL · ADVANCED VARIABLE CYLINDER MANAGEMENT® (VCM®) · DUAL EXHAUST WITH CHROME FINISHERS · HOMELINK® REMOTE SYSTEM · MULTI-POINT PROGRAMMED FUEL INJECTION SYSTEM (PGM-FI®)

### ACCORD TOURING V6 SEDAN

#### ADDS TO OR REPLACES TOURING FEATURES:

278-HP, 3.5-LITRE, 24-VALVE, SOHC, i-VTEC® V6 ENGINE · 6-SPEED AUTOMATIC TRANSMISSION (AT) WITH GRADE LOGIC CONTROL · ADVANCED VARIABLE CYLINDER MANAGEMENT® (VCM®) · HOMELINK® REMOTE SYSTEM · DUAL EXHAUST WITH CHROME FINISHERS · MULTI-POINT PROGRAMMED FUEL INJECTION SYSTEM (PGM-FI®)

EXT/INT COLOURS	LX	SPORT	EX-L	TOURING	EX-L V6	TOURING V6
WHITE ORCHID PEARL	GF	BF	BL	BL/IL*	BL	BL/IL
ALABASTER SILVER METALLIC	GF	BF*				
CRYSTAL BLACK PEARL	GF	BF	BL	BL/IL*	BL	BL/IL
MODERN STEEL METALLIC		BF	BL	BL	BL	BL
OBSDIAN BLUE PEARL		BF			GL	GL
CHAMPAGNE FROST PEARL					IL	IL
HEMATITE METALLIC			BL	BL*		BL
BASQUE RED PEARL		BF*		BL*		BL

\*CVT ONLY

### ACCORD SEDAN – EXTERIOR COLOURS

CRYSTAL BLACK PEARL	ALABASTER SILVER METALLIC	WHITE ORCHID PEARL
MODERN STEEL METALLIC	OBSDIAN BLUE PEARL	CHAMPAGNE FROST PEARL
HEMATITE METALLIC	BASQUE RED PEARL	

### ACCORD SEDAN – INTERIOR COLOURS

BLACK FABRIC (BF)	GREY FABRIC (GF)	GREY LEATHER (GL)
BLACK LEATHER (BL)	IVORY LEATHER (IL)	

# ACCORD COUPE



ACCORD EX-L V6 NAVI COUPE

ENGINE	EX	EX-L NAVI	EX-L V6 NAVI
2.4-LITRE, 16-VALVE, DIRECT INJECTION DOHC, i-VTEC® 4-CYLINDER	•	•	
3.5-LITRE, 24-VALVE, SOHC, i-VTEC® V6			•
HORSEPOWER @ RPM*	185 @ 6400	185 @ 6400	278 @ 6200
TORQUE (LB.-FT. @ RPM)*	181 @ 3900	181 @ 3900	252 @ 4900
DISPLACEMENT (CC)	2356	2356	3471
EMISSIONS RATING	TIER 2 BIN 5	TIER 2 BIN 5	TIER 2 BIN 5
BORE AND STROKE (MM)	87 X 99	87 X 99	89 X 93
COMPRESSION RATIO	11.1:1	11.1:1	10.5:1 (AT) 10:1 (MT)
ECOLOGICAL DRIVE ASSIST SYSTEM™ (ECO ASSIST™)	•	•	•
DRIVE-BY-WIRE THROTTLE SYSTEM™	•	•	•
MULTI-POINT PROGRAMMED FUEL INJECTION SYSTEM (PGM-FI®)			•
DIRECT INJECTION	•	•	
ADVANCED VARIABLE CYLINDER MANAGEMENT® (VCM®)			AT ONLY
RECOMMENDED FUEL	REGULAR	REGULAR	REGULAR

\*HORSEPOWER AND TORQUE CALCULATIONS REFLECT SAE NET REV. 08/04, SAE J1349 PROCEDURES.

DRIVETRAIN	EX	EX-L NAVI	EX-L V6 NAVI
6-SPEED AUTOMATIC TRANSMISSION (AT) WITH GRADE LOGIC CONTROL			AVAILABLE
6-SPEED MANUAL TRANSMISSION (MT)	•	•	•
CONTINUOUSLY VARIABLE TRANSMISSION (CVT)	AVAILABLE	AVAILABLE	
ECON MODE BUTTON	•	•	•
FRONT-WHEEL DRIVE	•	•	•
HILL START ASSIST	•	•	•
STEERING WHEEL-MOUNTED PADDLE SHIFTERS	AVAILABLE	AVAILABLE	AVAILABLE

CHASSIS	EX	EX-L NAVI	EX-L V6 NAVI
17" ALUMINUM-ALLOY WHEELS	•	•	
18" ALUMINUM-ALLOY WHEELS, PEWTER GREY, DIAMOND MACHINED FACE			•
ALL-SEASON TIRES	P215/55 R17	P215/55 R17	P235/45 R18
ELECTRIC POWER-ASSISTED RACK-AND-PINION STEERING (EPS)	•	•	•
FRONT STRUT TOWER BRACE	•	•	•
INDEPENDENT STRUT FRONT SUSPENSION	•	•	•
INDEPENDENT MULTI-LINK REAR SUSPENSION	•	•	•
POWER-ASSISTED, VENTILATED FRONT/SOLID REAR DISC BRAKES	•	•	•
STABILIZER BARS – FRONT AND REAR	•	•	•

FUEL ECONOMY† (L/100 KM)	EX	EX-L NAVI	EX-L V6 NAVI
AUTOMATIC TRANSMISSION (CITY/HWY/COMBINED)			10.0/6.1/8.2
MANUAL TRANSMISSION (CITY/HWY/COMBINED)	8.7/5.7/7.4	8.7/5.7/7.4	11.5/7.1/9.5
CONTINUOUSLY VARIABLE TRANSMISSION (CITY/HWY/COMBINED)	7.8/5.5/6.7	7.8/5.5/6.7	

†BASED ON 2012 ENERGIDE FUEL CONSUMPTION GUIDE RATINGS PUBLISHED BY NATURAL RESOURCES CANADA. TRANSPORT CANADA APPROVED TEST METHODS USED.  
 \*YOUR ACTUAL FUEL CONSUMPTION WILL VARY BASED ON DRIVING HABITS AND OTHER FACTORS – USE FOR COMPARISON ONLY.



ACCORD EX-L V6 NAVI COUPE

SAFETY	EX	EX-L NAVI	EX-L V6 NAVI
3-POINT SEAT BELTS WITH FRONT PRETENSIONERS	•	•	•
FRONT ADJUSTABLE SEAT BELT ANCHORS	•	•	•
4-WHEEL ANTI-LOCK BRAKING SYSTEM (ABS) WITH ELECTRONIC BRAKE-FORCE DISTRIBUTION (EBD) AND BRAKE ASSIST	•	•	•
ADVANCED COMPATIBILITY ENGINEERING™ (ACE™) BODY STRUCTURE	•	•	•
DUAL-STAGE, DUAL-THRESHOLD FRONT AIRBAGS (SRS)	•	•	•
SIDE CURTAIN AIRBAGS	•	•	•
SMARTVENT™ SIDE AIRBAGS	•	•	•
IMMOBILIZER THEFT-DETERRENT SYSTEM	•	•	•
LED DAYTIME RUNNING LIGHTS			•
DAYTIME RUNNING LIGHTS	•	•	
LOWER ANCHORS AND TETHERS FOR CHILDREN (LATCH)	•	•	•
SECURITY SYSTEM	•	•	•
TIRE PRESSURE MONITORING SYSTEM (TPMS)	•	•	•
VEHICLE STABILITY ASSIST (VSA®) WITH TRACTION CONTROL	•	•	•

EXTERIOR	EX	EX-L NAVI	EX-L V6 NAVI
BODY-COLOURED HEATED FOLDING POWER SIDE MIRRORS WITH INTEGRATED TURN INDICATORS INCLUDING EXPANDED VIEW DRIVER'S MIRROR	•	•	•
CHROME DOOR HANDLES	•	•	•
DUAL EXHAUST WITH CHROME FINISHERS			•
FOG LIGHTS	•	•	•
FRONT SPLASH GUARDS	•	•	•
POWER MOONROOF WITH TILT FEATURE	•	•	•
PROJECTOR-BEAM HALOGEN HEADLIGHTS	•	•	
PROJECTOR-BEAM LED HEADLIGHTS			•
REAR WINDOW DEFROSTER	•	•	•
SPEED-SENSING, VARIABLE INTERMITTENT WINDSHIELD WIPERS	•	•	•
TRUNK SPOILER	•	•	•



ACCORD EX-L V6 NAVI COUPE

COMFORT & CONVENIENCE	EX	EX-L NAVI	EX-L V6 NAVI
12-VOLT POWER OUTLET (2)	•	•	•
ACTIVE NOISE CANCELLATION (ANC)/ACTIVE SOUND CONTROL (ASC)	•	•	•
AUTO-DIMMING REARVIEW MIRROR	•	•	•
AUTO-ON/OFF HEADLIGHTS	•	•	•
CARGO AREA LIGHT	•	•	•
CENTRE CONSOLE AND STORAGE COMPARTMENT	•	•	•
DRIVER'S AND FRONT PASSENGER'S ILLUMINATED VANITY MIRRORS	•	•	•
DRIVER'S AND FRONT PASSENGER'S SEATBACK POCKETS	•	•	•
DUAL-ZONE AUTOMATIC CLIMATE CONTROL WITH AIR-FILTRATION SYSTEM	•	•	•
EXTERIOR TEMPERATURE INDICATOR	•	•	•
FORWARD COLLISION WARNING (FCW) SYSTEM <sup>††</sup>	•	•	•
FRONT AND REAR BEVERAGE HOLDERS	•	•	•
FRONT POCKETS	•	•	•
HANDBSFREELINK™-BILINGUAL BLUETOOTH® WIRELESS MOBILE PHONE INTERFACE	•	•	•
HOMELINK® REMOTE SYSTEM <sup>°</sup>			•
HONDA SATELLITE-LINKED NAVIGATION SYSTEM™ WITH TRILINGUAL VOICE RECOGNITION AND 3D MAP DISPLAY		•	•
ILLUMINATED DRIVER'S AND PASSENGER'S POWER WINDOW, DOOR LOCK AND MIRROR SWITCHES	•	•	•
LANE DEPARTURE WARNING (LDW) SYSTEM <sup>††</sup>		•	•
LANEWATCH™ BLIND SPOT DISPLAY <sup>††</sup>		•	•
MAP LIGHTS	•	•	•
MULTI-ANGLE REARVIEW CAMERA <sup>††</sup>	•	•	•
ONE-TOUCH TURN SIGNALS	•	•	•
POWER DOOR LOCKS	•	•	•
POWER WINDOWS WITH AUTO-UP/DOWN DRIVER'S AND FRONT PASSENGER'S WINDOWS AND KEYLESS OPERATION	•	•	•
PROXIMITY KEY ENTRY SYSTEM WITH POWER TRUNK RELEASE, POWER WINDOW CONTROL AND PUSHBUTTON START	•	•	•
REAR-SEAT CENTRE ARMREST WITH CUPHOLDER	•	•	•
SMART MAINTENANCE MINDER™ SYSTEM	•	•	•
STEERING WHEEL-MOUNTED CRUISE CONTROL	•	•	•
SUNGLASSES HOLDER	•	•	•
TEMPORARY SPARE TIRE	•	•	•
TILT AND TELESCOPIC STEERING COLUMN	•	•	•

<sup>††</sup>DOES NOT REPLACE THE DRIVER'S RESPONSIBILITY TO EXERCISE DUE CARE WHILE DRIVING.

<sup>°</sup>HOMELINK CAN BE PROGRAMMED WITH CODES OF UP TO THREE REMOTE-CONTROL DEVICES (E.G., GARAGE-DOOR OPENER, HOME SECURITY SYSTEM, ETC.). ADDITIONAL CONTROL DEVICES NOT PROVIDED BY HONDA MAY BE REQUIRED.



ACCORD EX-L V6 NAVI COUPE

SEATING & TRIM	EX	EX-L NAVI	EX-L V6 NAVI
DRIVER'S SEAT POSITION MEMORY		•	•
DRIVER'S SEAT WITH 8-WAY POWER ADJUSTMENT AND LUMBAR SUPPORT	•	•	•
FLOOR MATS	•	•	•
FOLD-DOWN REAR SEATBACK WITH LOCK	•	•	•
FRONT PASSENGER'S SEAT WITH 4-WAY MANUAL ADJUSTMENT	•	•	•
HEATED FRONT SEATS	•	•	•
LEATHER-TRIMMED SEATING SURFACES		•	•
LEATHER-WRAPPED STEERING WHEEL		•	•

DIMENSIONS	EX	EX-L NAVI	EX-L V6 NAVI
CARGO VOLUME (L)	379	379	379
CURB WEIGHT – MT/AT (KG)	1480/1509	1482/1515	1552/1603
FUEL TANK CAPACITY (L)	65	65	65
GROUND CLEARANCE – NO-LOAD/FULL-LOAD (MM)	146/110	146/110	141/110
HEADROOM – FRONT/REAR (MM)	944/944	944/944	944/944
HEIGHT (MM)	1436	1436	1436
HIP ROOM – FRONT/REAR (MM)	1406/1423	1406/1423	1406/1423
LEGGROOM – FRONT/REAR (MM)	1073/855	1073/855	1073/855
LENGTH (MM)	4805	4805	4805
PASSENGER VOLUME (L)	2636	2636	2636
SHOULDER ROOM – FRONT/REAR (MM)	1497/1400	1497/1400	1497/1400
TRACK – FRONT/REAR (MM)	1584/1583	1584/1583	1584/1586
TURNING DIAMETER (M)	5.6	5.6	5.8
WHEELBASE (MM)	2725	2725	2725
WIDTH (MM)	1850	1850	1850

ENTERTAINMENT	EX	EX-L NAVI	EX-L V6 NAVI
8" i-MID (INTELLIGENT MULTI-INFORMATION DISPLAY) LED BACKLIT LCD TFT DISPLAY	•	•	•
AM/FM/CD PREMIUM AUDIO SYSTEM WITH MP3/WINDOWS MEDIA® AUDIO PLAYBACK CAPABILITY AND 7 SPEAKERS INCLUDING SUBWOOFER	•	•	•
AUDIO ANTI-THEFT FEATURE	•	•	•
E-MAIL FUNCTION**	•	•	•
TEXT MESSAGE FUNCTION**	•	•	•
TWEETERS	•	•	•
HondaLink™ WITH AUDIO TOUCH SCREEN**▲	•	•	•
ILLUMINATED STEERING WHEEL-MOUNTED AUDIO CONTROLS	•	•	•
USB DEVICE CONNECTOR	•	•	•
MP3/AUXILIARY INPUT JACK	•	•	•
SIRIUSXM® CANADA SATELLITE RADIO*	•	•	•

\*INCLUDES A NO-CHARGE TRIAL OF 3 MONTHS, BEYOND WHICH SERVICE FEES APPLY. AVAILABLE IN 10 CANADIAN PROVINCES AND 48 CONTIGUOUS U.S. STATES. SEE TERMS AND CONDITIONS AT WWW.XMRADIO.CA OR WWW.SIRIUS.CA.  
 \*\*ONLY COMPATIBLE WITH CERTAIN DEVICES.

▲STANDARD DATA RATES MAY APPLY.



ACCORD EX-L V6 NAVI COUPE

## ACCORD EX COUPE

185-HP, 2.4-LITRE, 16-VALVE, DIRECT INJECTION DOHC, i-VTEC® 4-CYLINDER ENGINE · 6-SPEED MANUAL TRANSMISSION (MT) · AVAILABLE CONTINUOUSLY VARIABLE TRANSMISSION (CVT) · 4-WHEEL ANTI-LOCK BRAKING SYSTEM (ABS) WITH ELECTRONIC BRAKE-FORCE DISTRIBUTION (EBD) AND BRAKE ASSIST · 17" ALUMINUM-ALLOY WHEELS · 8" i-MID (INTELLIGENT MULTI-INFORMATION DISPLAY) LED BACKLIT LCD TFT DISPLAY · ACTIVE NOISE CANCELLATION (ANC) · AM/FM/CD PREMIUM AUDIO SYSTEM WITH MP3/WINDOWS MEDIA® AUDIO PLAYBACK CAPABILITY AND 7 SPEAKERS INCLUDING SUBWOOFER · AVAILABLE STEERING WHEEL-MOUNTED PADDLE SHIFTERS · BODY-COLOURED HEATED FOLDING POWER SIDE MIRRORS WITH INTEGRATED TURN INDICATORS INCLUDING EXPANDED VIEW DRIVER'S MIRROR · CHROME DOOR HANDLES · DRIVE-BY-WIRE THROTTLE SYSTEM™ · DRIVER'S AND FRONT PASSENGER'S ILLUMINATED VANITY MIRRORS · DRIVER'S SEAT WITH 8-WAY POWER ADJUSTMENT AND LUMBAR SUPPORT · DUAL-STAGE, DUAL-THRESHOLD FRONT AIRBAGS (SRS) · DUAL-ZONE AUTOMATIC CLIMATE CONTROL WITH AIR-FILTRATION SYSTEM · E-MAIL FUNCTION\*\* · ECOLOGICAL DRIVE ASSIST SYSTEM™ (ECO ASSIST™) · ELECTRIC POWER-ASSISTED RACK-AND-PINION STEERING (EPS) · EXTERIOR TEMPERATURE INDICATOR · FOG LIGHTS · FRONT AND REAR BEVERAGE HOLDERS · FRONT PASSENGER'S SEAT WITH 4-WAY MANUAL ADJUSTMENT · HANDSFREELINK™-BILINGUAL BLUETOOTH® WIRELESS MOBILE PHONE INTERFACE · HEATED FRONT SEATS · HondaLink™ WITH AUDIO TOUCH SCREEN\*\*\* · ILLUMINATED STEERING WHEEL-MOUNTED AUDIO CONTROLS · INDEPENDENT STRUT FRONT SUSPENSION · INDEPENDENT MULTI-LINK REAR SUSPENSION · MP3/AUXILIARY INPUT JACK · USB DEVICE CONNECTOR · MULTI-ANGLE REARVIEW CAMERA†† · POWER DOOR LOCKS · POWER-ASSISTED, VENTILATED FRONT/SOLID REAR DISC BRAKES · POWER MOONROOF WITH TILT FEATURE · POWER WINDOWS WITH AUTO-UP/DOWN DRIVER'S AND FRONT PASSENGER'S WINDOW AND KEYLESS OPERATION · PROJECTOR-BEAM HALOGEN HEADLIGHTS · PROXIMITY KEY ENTRY SYSTEM WITH POWER TRUNK RELEASE, POWER WINDOW CONTROL AND PUSHBUTTON START · SECURITY SYSTEM · SIDE CURTAIN AIRBAGS · SIRIUSXM® CANADA SATELLITE RADIO\* · SMARTVENT™ SIDE AIRBAGS · TEXT MESSAGE FUNCTION\*\* · SPEED-SENSING, VARIABLE INTERMITTENT WINDSHIELD WIPERS · STEERING WHEEL-MOUNTED CRUISE CONTROL · TILT AND TELESCOPING STEERING COLUMN · TIRE PRESSURE MONITORING SYSTEM (TPMS) · TRUNK SPOILER · VEHICLE STABILITY ASSIST (VSA®) WITH TRACTION CONTROL

\*INCLUDES A NO-CHARGE TRIAL OF 3 MONTHS, BEYOND WHICH SERVICE FEES APPLY.

AVAILABLE IN 10 CANADIAN PROVINCES AND 48 CONTIGUOUS U.S. STATES. SEE TERMS AND CONDITIONS AT WWW.XMRADIO.CA OR WWW.SIRIUS.CA

\*\*ONLY COMPATIBLE WITH CERTAIN DEVICES.

††DOES NOT REPLACE THE DRIVER'S RESPONSIBILITY TO EXERCISE DUE CARE WHILE DRIVING.

▲STANDARD DATA RATES MAY APPLY.

## ACCORD EX-L NAVI COUPE

ADDS TO OR REPLACES EX FEATURES:

AUTO-DIMMING REARVIEW MIRROR · FORWARD COLLISION WARNING (FCW) SYSTEM†† · HONDA SATELLITE-LINKED NAVIGATION SYSTEM™ WITH TRILINGUAL VOICE RECOGNITION AND 3D MAP DISPLAY · DRIVER'S SEAT POSITION MEMORY · LANE DEPARTURE WARNING (LDW) SYSTEM†† · LANEWATCH™ BLIND SPOT DISPLAY†† · LEATHER-TRIMMED SEATING SURFACES · LEATHER-WRAPPED STEERING WHEEL

††DOES NOT REPLACE THE DRIVER'S RESPONSIBILITY TO EXERCISE DUE CARE WHILE DRIVING.

## ACCORD EX-L V6 NAVI COUPE

ADDS TO OR REPLACES EX-L NAVI FEATURES:

278-HP, 3.5-LITRE, 24-VALVE, SOHC, i-VTEC® V6 ENGINE · AVAILABLE 6-SPEED AUTOMATIC TRANSMISSION (AT) WITH GRADE LOGIC CONTROL · 18" ALUMINUM-ALLOY WHEELS, PEWTER GREY, DIAMOND MACHINED FACE · ADVANCED VARIABLE CYLINDER MANAGEMENT® (VCM®) (AT ONLY) · DUAL EXHAUST WITH CHROME FINISHERS · HOMELINK® REMOTE SYSTEM · LED DAYTIME RUNNING LIGHTS · PROJECTOR-BEAM LED HEADLIGHTS · MULTI-POINT PROGRAMMED FUEL INJECTION SYSTEM (PGM-FI®)

EXT/INT COLOURS	EX	EX-L NAVI	EX-L V6 NAVI
WHITE ORCHID PEARL	BF	BL	BL/BIL*
ALABASTER SILVER METALLIC	BF**		
CRYSTAL BLACK PEARL	BF	BL	BL/BIL*
MODERN STEEL METALLIC		BL	BL
STILL NIGHT PEARL		BIL**	BIL
SAN MARINO RED	BF	BL	BL
TIGER EYE PEARL			BIL

\*AT ONLY  
\*\*CVT ONLY

## ACCORD COUPE – EXTERIOR COLOURS

CRYSTAL BLACK PEARL	ALABASTER SILVER METALLIC	WHITE ORCHID PEARL
MODERN STEEL METALLIC	STILL NIGHT PEARL	TIGER EYE PEARL
SAN MARINO RED		

## ACCORD COUPE – INTERIOR COLOURS

BLACK FABRIC (BF)	BLACK LEATHER (BL)	BLACK AND IVORY LEATHER (BIL)
-------------------	--------------------	-------------------------------



**GET THE LATEST PHOTOS, MSRPS,  
FEATURES, ACCESSORIES, SPECS  
AND MORE AT [WWW.HONDA.CA](http://WWW.HONDA.CA).**

Some of the technologies described in this brochure come with limitations. See owner's manual for complete details. Specifications, features, illustrations and equipment shown in this catalogue are based on the latest available information at the time of publication. Although descriptions are believed to be correct, accuracy cannot be guaranteed. Honda Canada Inc. reserves the right to make changes at any time, without notice or obligation, in colours, specifications, accessories, materials and models. Some vehicles are shown with optional equipment. Some vehicles shown are U.S. models. Canadian specifications may vary. Map Database of the Honda Satellite-Linked Navigation System covers major metropolitan areas in southern Canada and the 48 contiguous U.S. states. For a list of current detailed coverage areas, refer to the Honda web site, [www.honda.ca](http://www.honda.ca). Aha, the Aha logo, and the Aha trade dress are trademarks or registered trademarks of HARMAN International Industries. Bluetooth is a registered trademark of SIG Inc. HomeLink and HandsFreeLink are registered trademarks or trademarks of Johnson Controls Technology. Windows Media is a registered trademark of Microsoft Corporation. SiriusXM Canada is a registered trademark of Canadian Satellite Radio Holdings Inc. Honda, Accord, i-VTEC, Advanced Compatibility Engineering, ACE, Drive-by-Wire Throttle System, Earth Dreams, Ecological Drive Assist System, Eco Assist, HondaLink, Honda Satellite-Linked Navigation System, LaneWatch, Maintenance Minder, PGM-FI, Smartvent, VCM, Variable Cylinder Management, VSA, The Power of Dreams, HondaJet and ASIMO are trademarks of Honda Motor Co., Ltd.