



TEANA





CONTENTS

Interior	7
Exterior	9
Engine & Transmission	11
Comfort & Convenience	13
Safety	15
Features	17
Specifications	19
Colour & Upholstery	20
Service	21
Manufacturing Facility in India	22
Dealership Network	23
SHIFT_the way you move	24

WELCOME TO LUXURY ON
AN UNPRECEDENTED SCALE.



A HARMONIOUS
DRIVING EXPERIENCE.



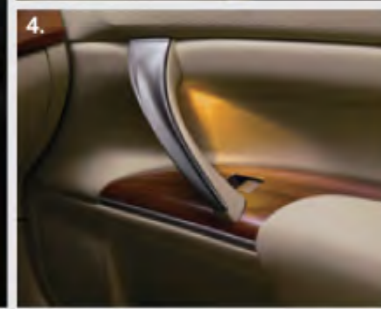


UNCOMPROMISING LUXURY,
DOWN TO THE FINEST DETAIL.

INTERIOR

An array of features to ensure your journey is pleasant and relaxing.

Driving Nissan Teana is always a pleasure. To ease your mind and enhance your focus, every necessity is at your fingertips. Special premium features exclusive to Nissan Teana, such as the stylish glass twin sunroof, ottoman-style-three-layer ventilated seats, spacious interiors upholstered with the finest leather and dashboard adorned with the finest wood finish, make sure you are completely at ease.



1. A **Twin Sunroof** with a power shade gives the cabin an open air feeling. Sit back and enjoy the sunshine with UV protection.
2. Befitting Nissan's premier sedan, the front passenger seat features a **power ottoman-style leg rest** to support the lower legs for those long journeys.
- 3|4. **LED indirect illumination** shines softly on the centre console, front passenger and the rear door grips.
5. **Six-speaker audio system** includes a 6-CD changer and MP3 compatibility via the AUX input.
6. A large rear centre **armrest** helps to foster a sense of relaxation and comfort.

EXTERIOR



Representing a new slant on the concept of modern luxury design.

From the subtle undulating lines that flow across the body to the elegant styling, complete with a sleek grille, 17-inch nine-spoke alloy wheels, and a stance that dips aggressively low, the Teana is designed to embody luxury.

1. A sharp line climbs the fender from the **headlamps**, where blue inner lenses generate a cool-toned, high-tech ambience.

2. The geometric, three-dimensional look of the **LED rear combination lamps** offer an impressive view from the rear.

3. **Door mirror** turned signal lamps improve visibility for other drivers and pedestrians. Mirror contours reduce wind noise.

4. Dynamic and elegant, the 9-spoke **17-inch alloy wheels** for XV model engraved with an expressive, undulating line and the 10-spoke **16-inch alloy wheels** for XL model with impressive looks.

5. A sweeping arch along the **bodyline** reflects Teana's elegant, distinguished image.



17-inch alloy wheels/
215/55R17 tyres

16-inch alloy wheels/
205/65R16 tyres

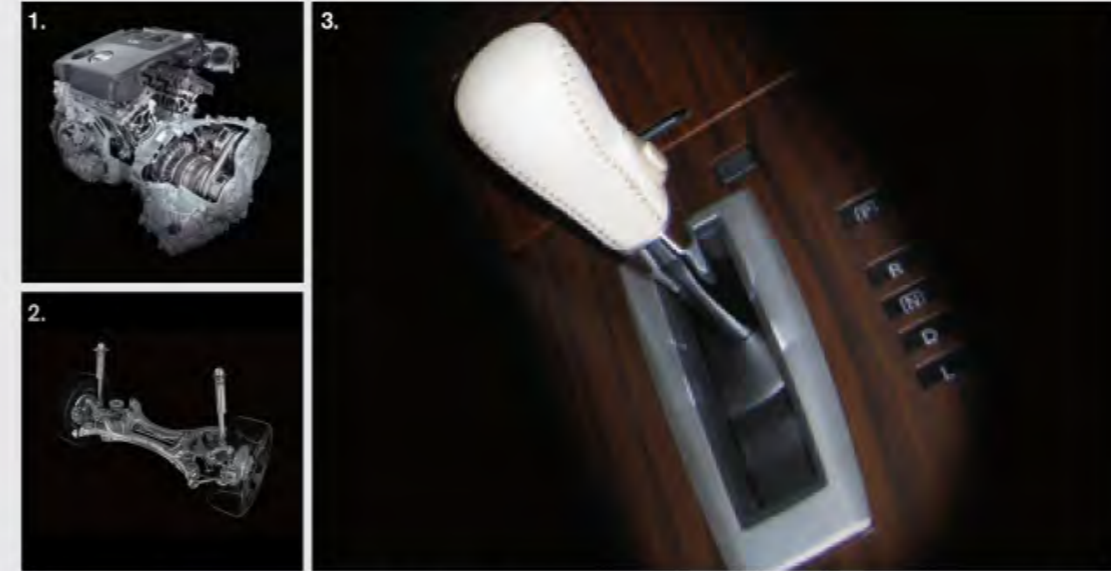
ENGINE & TRANSMISSION



The Nissan VQ engine series has made Ward's 10 Best Engines list for 16 years in a row.

Effortless performance and comfort ensure total relaxation.

The exquisite combination of Nissan Teana's award winning V6 engine complemented by Nissan's advanced Xtronic CVT provides exceptionally smooth acceleration. Stability is provided by the all-new Nissan D platform with multi-link rear suspension. It all makes for a ride that's so quiet and comfortable, that you'll want the road to go on forever.



1. VQ25DE Petrol engine:

Power is supplied by V6 engines, the VQ25. It provides quick response, smooth acceleration and an abundance of low-end midrange torque and high-end power. New intake systems and a six-point engine mounting help to minimize noise.

2. A refined suspension for superior ride quality:

Isolated from noise and vibration in Nissan Teana's spacious cabin, you won't notice what's going on below. That's because Nissan Teana's multi-link rear suspension and its shock absorbers are optimized in the most efficient position on the all new Nissan D platform. The result is, confident handling and an especially smooth ride.

3. State-of-the-art Xtronic CVT:

In tandem with Nissan Teana's high performance engine, Xtronic CVT with sport-mode switch delivers faster processing speeds, reduced friction, wider gear ratios and **enhanced fuel economy**. The new CVT control unit analyzes speed and cornering, driver intention and incline, then applies Adaptive Shift Control (ASC) logic to choose the best shift patterns for naturally precise shifting.

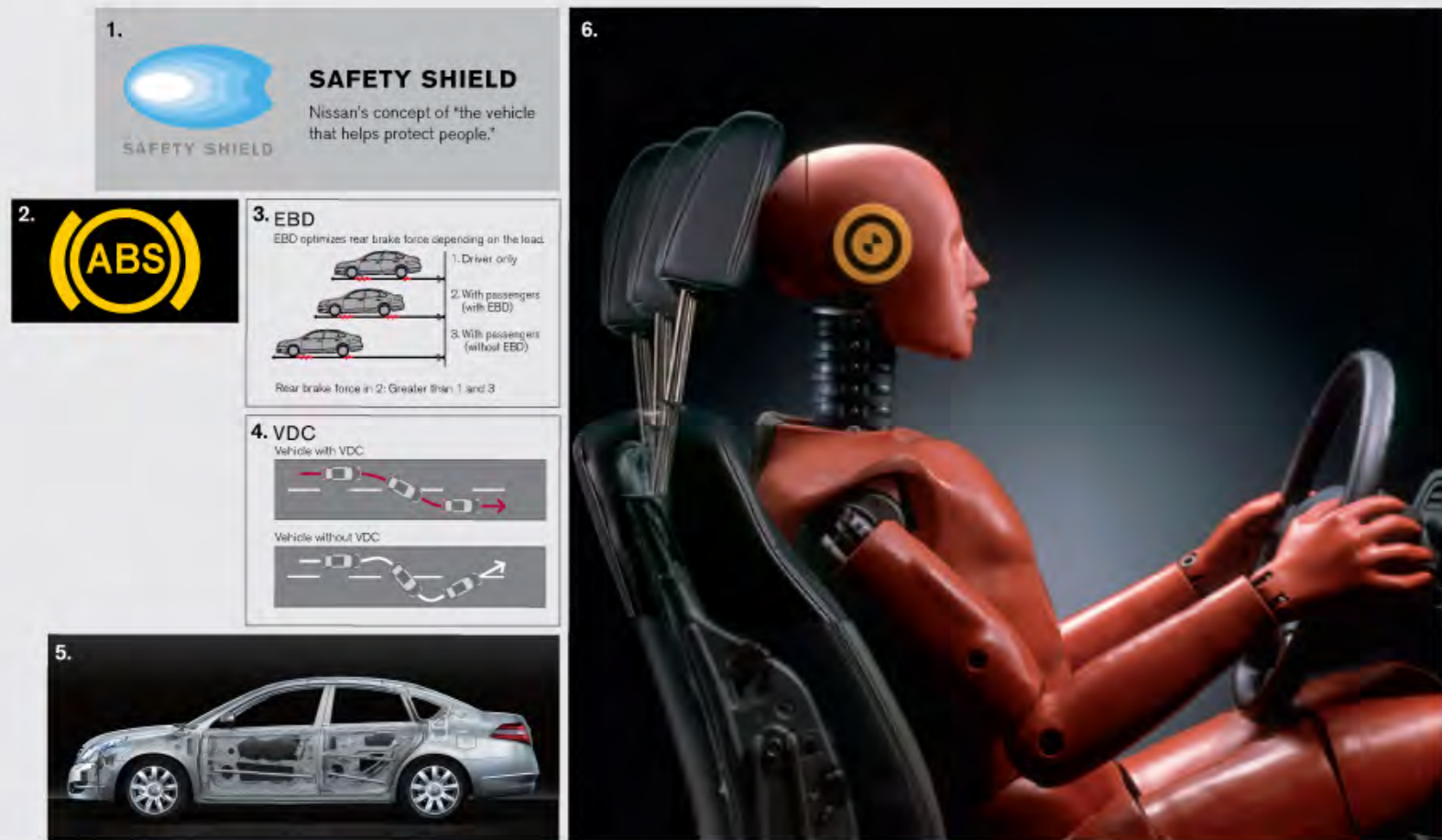


COMFORT & CONVENIENCE



1. Steering wheel controls allow easy control of the audio system and cruise control.
2. Each memory key recalls two driving positions, and the seat memory function will automatically move your seat into position.
3. With layer upon layer of body cushioning comfort, these are no ordinary seats. The stress-free structure holds your body firmly and evenly while absorbing vibration. The driver's seat of the XV models features an adjustable **lumbar support system**. First in class to offer air-conditioned front seats for more comfort. Even after a long drive, you arrive refreshed. Both seats also feature in-seat heaters.
4. **Intelligent key** (with engine immobilizer) locks and unlocks doors, opens the trunk and starts the engine without inserting the key.
5. **Push button ignition** starts the engine with one simple push of a button.
6. **Power sunshade** protects rear passengers from sunlight.
- 7|8. **Cup holders** in the front centre consoles and rear armrest for the convenience of your long journey.
9. A unified design makes the **seats and armrests** look and feel like a high grade sofa.

SAFETY



1. Safety Shield:
In the area of safety technology, Nissan pursues innovation as part of its "Safety Shield" concept, an advanced, proactive approach to safety issues based on the idea that cars should help protect people. This approach provides various measures to help the driver and passengers better avoid dangers in ways that are optimized to each of a wide range of circumstances that the vehicle may be in, from "risk has not yet appeared" to "post-crash."

2|3. ABS (Anti-Lock Braking System)/ EBD (Electronic Brake force Distribution):
Contributes to safe driving by enhancing braking control to optimize braking performance with loads of various weights.

4. Vehicle Dynamic Control (VDC):
VDC automatically controls brake and engine output to enhance stability when sensors detect that the vehicle may slip sideways due to steering, braking or accelerator pedal operation.

5. Improved Zone Body construction:
Nissan has optimized the multi-load path structure, which absorbs and diffuses the energy of a front-end collision and helps to maintain the integrity of the passenger compartment, offering the world's highest level of impact safety.

6. Active head restraints:
Supports the head by moving forward in the event of a collision.

7. Dual front, side, and curtain SRS (Supplemental Restraint System) airbags:
Together with pretensioner front seatbelts, these 06-SRS airbags help to reduce the risk of injury resulting from an impact.

8. Xenon headlamps:
Xenon headlamps, equipped with **headlamp washers**, provide intense long-range illumination and optimum visibility in all weather conditions.

9. LED rear combination lamps:
Quick illumination gives the following drivers more time to react.

10. Front fog lamps:
Bumper-integrated fog lamps provide extra illumination in haze, fog and other low-visibility conditions.

FEATURES

Variant		250 XL	250 XV
Exterior	Halogen headlamps	•	—
	Twin Sunroof	—	•
	Xenon headlamps with retractable washer	—	•
	Front Fog Lamps	•	•
	Electrically-adjustable and auto-foldable door mirrors	•	•
	Turn indicators on door mirrors	•	•
	Heat reflective glass	•	•
	Exterior Chrome Package	•	•
	Rear Defogger	•	•
	Chrome Door Handles	•	•
	04 Alloy Wheels & Spare Wheel Steel	•	•
	LED Rear combination lamps	•	•
	Dual exhaust	•	•
Interior	Leather-wrapped steering wheel	•	—
	Leather-wrapped steering wheel with wood inserts	—	•
	Interior wood design decor on the front upper dashboard, door panel and gear lever console	•	•
	Multi-function steering wheel	—	•
	Meter Display with Fine Vision	•	•
	Outside Temperature Gauge	•	•
	Tilt adjustment steering wheel	•	•
	Illuminated vanity mirror	—	•
	LED Indirect illumination of centre console	—	•
	Illuminated side step garnish	•	•
	LED Indirect illumination of front & rear door grip	—	•
Seats	Leather Upholstery	•	•
	03-layered seat structure with Urethane material	—	•
	Driver seat with electric adjustment	•	•
	Ottoman seat (front passenger) with electric adjustment	—	•
	Driver seat lumbar adjustment	—	•
	Ventilated front seats with 2-stage cooling and heating operation	—	•
	Trunk access through folding centre armrest in rear seat	•	•
Driver seat with 2-programmable memory functions	—	•	

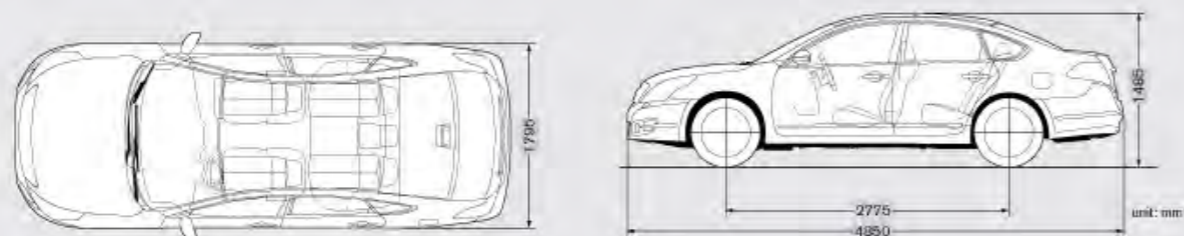
— Not available • Available

Variant		250 XL	250 XV
Air - Conditioning	Dual zone automatic climate control	•	•
	Rear Air-Conditioner vents	•	•
Entertainment	Plasma-cluster Air-Conditioning System	—	•
	Audio system with 06-speakers	•	•
Safety	In dash 06-CD changer music system with AUX in	•	•
	Glass Type Antenna	•	•
	ABS +EBD +BA	•	•
	Vehicle Dynamic Control (VDC)	—	•
	Improved zone body construction (ultra-high tensile steel)	•	•
	Foot Parking Brake	•	•
	Front Active Head Restraint	•	•
	03-Point Height adjustable seatbelts	•	•
	03-Point ELR rear seatbelts for three passengers (with self-standing buckles)	•	•
	Front seatbelt with pretensioner and two-stage load limiter	•	•
	Front airbags	•	•
Comfort & Convenience	Side airbags	—	•
	Curtain airbags	—	•
	Engine Immobilizer	•	•
	Speed Sensing auto-door locking	•	•
	Intelligent Key (I-Key)	•	•
	Push Button Ignition	•	•
	Cruise control	—	•
	Front 02-Cup holders	•	•
	Rear armrest with 02-Cup holders	•	•
	Rear Reading Lights	•	•
	03-Grab folding handles with coat hooks	•	•
	Lockable Glove Compartment	•	•
	Sunglasses holder	•	•
Front & Rear doors pocket	•	•	
Front & Rear power windows	•	•	
Request Switch Door Opening	•	•	
13-CD Case Capacity Centre Console	•	•	
Remote Trunk Opening	•	•	
Rear-windshield-powered sun shade	—	•	

— Not available • Available

SPECIFICATIONS

Grade		250 XL	250 XV
Engine	Engine Code	VQ25DE	
	Type	6-cylinder, V-shape arrangement, DOHC	
	Displacement (cc)	2496	
Performance	Bore & Stroke (mm)	85 x 73	
	Max. Power (PS (Kw)/rpm)	182 (134)/6000	
	Max. Torque (Nm (kg-m)/rpm)	228 (23.2)/4400	
	Compression Ratio	9.8	
	Fuel System	Electronic Fuel Injection, Gasoline	
Transmission	Transmission	Xtronic CVT (Continuously Variable) with Sports Mode	
	Steering Type	Power Assisted Rack & Pinion (Speed Sensitive)	
Steering	Min. Turning Radius (m)	5.4	5.8
	Suspensions	Front	Independent Strut
Rear		Independent, Multi-Link	
Brakes	System	Power Assisted, ABS + EBD + BA	
	Front	Ventilated Disc	
Tyres & Wheels	Rear	Disc	
	Wheels	16 x 6.5J Alloy	17 x 7J Alloy
Dimensions	Tyres	205/65 R16 95H	215/55 R17 94V
	Overall length (mm)	4850	
	Overall width (mm)	1795	
	Overall height (mm)	1485	
	Wheelbase (mm)	2775	
	Tread Front (mm)	1560	1550
	Tread Rear (mm)	1565	1555
	Min. ground clearance (mm)	145	
	Curb weight (kg)	1506	1537
	Capacities	Seating capacity (persons)	5
Fuel tank capacity (litres)		70	
Trunk capacity (litres)		488	



COLOUR & UPHOLSTERY

Body Colours



Amethyst Grey (PM)



Onyx Black (P)



Brilliant Silver (M)



Bordeaux Red (2P)

1 (PM) Pearl Metallic 1 (M) Metallic 1 (P) Pearl 1 (2P) 2-coat Pearl 1 (3P) 3-coat Pearl



Brilliant Pearl White (3P)

Upholstery



Perforated Leather (XV)



Leather (XL)

*Download the Nissan Teana App from the Apple App Store.

SERVICE



Owner Benefits:

When you purchase a vehicle with the exceptional quality of Nissan Teana, you expect the service and support to be of the same caliber. After all, a premium automobile is only a part of the ownership experience. With Nissan Teana, you get a commitment; from personalized care to attentive service. Because every aspect of owning a Nissan Teana should be an enjoyable and a rewarding experience.



Extended Warranty:

Comprehensive vehicle and travel protection beyond the initial warranty period enhances peace of mind. The extended warranty provides your vehicle with cover for parts, repairs and other expenses. Extended warranty is available on Nissan Teana for a period of 2 years / 80,000 kms (whichever is earlier).



Nissan Care:

24x7 Nissan Care Assist-1800-209-4080. Our operators are available 24 hours a day to help you quickly resolve your queries and needs.



Nissan Roadside Assistance:

Drive an extra mile without any worries with the Nissan Roadside Assistance.

All you need to do, is call the toll-free number 1800-209-4080 and a helpful Nissan Roadside Assistance Consultant will be available to assist you. This service is available 24 hours a day, 365 days a year and covers you across India. This assistance is also **available in major regional languages.**

MANUFACTURING FACILITY IN INDIA

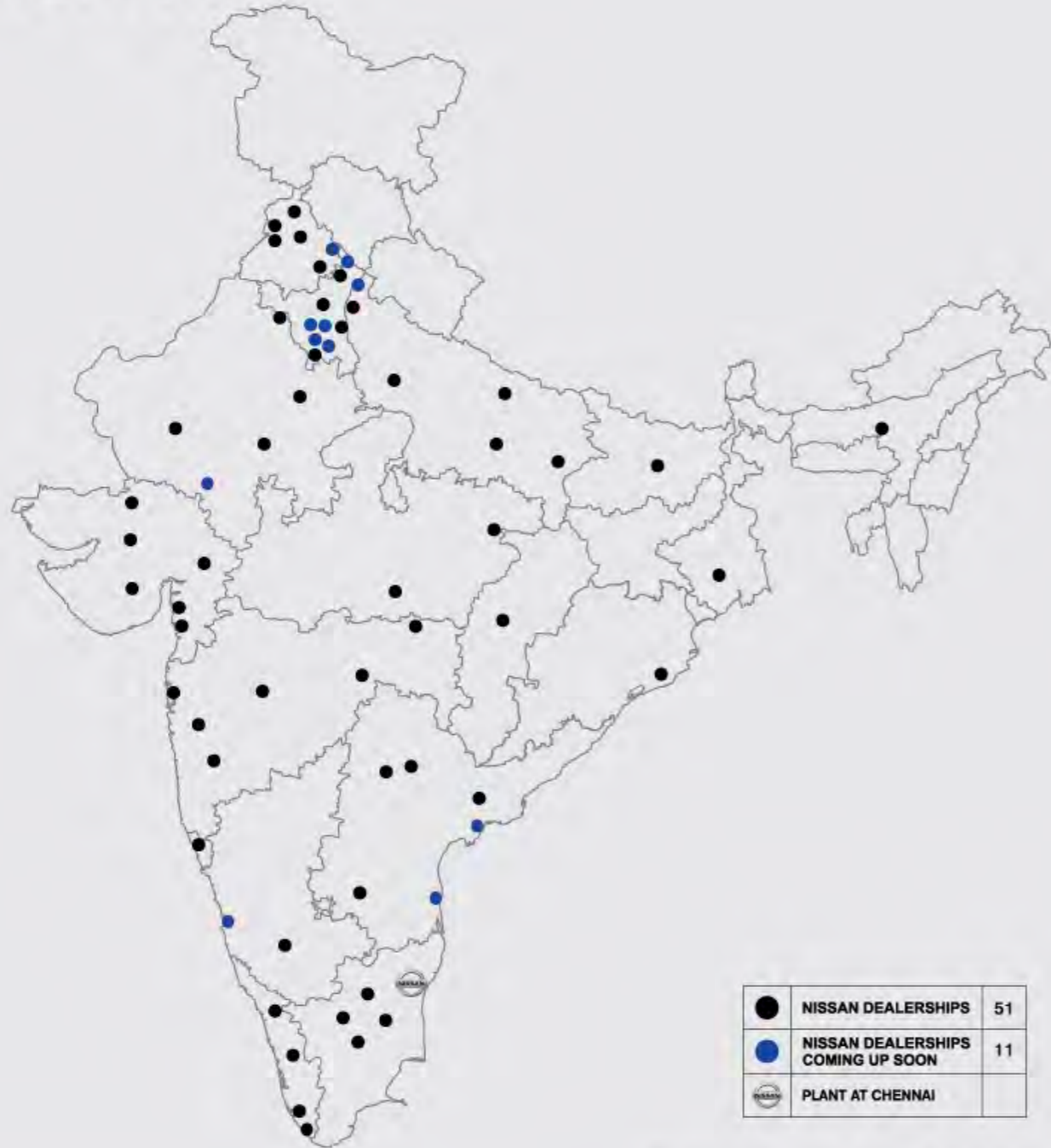
Nissan has a state-of-the-art manufacturing plant at Oragadam, near Chennai. Built with an investment of ₹45 billion (\$990 million), this plant has a capacity to produce 4,00,000 cars a year.

This Chennai plant operates in full compliance with Alliance global manufacturing processes and quality standards. Its production management system, launched for the first time at any plant of Renault and Nissan, is based on mutual knowledge sharing and the best practices from both companies.

The new manufacturing process allows the plant to seamlessly produce world-class cars like the luxurious Nissan Teana, the first locally made global compact hatchback Nissan Micra and the sedan Nissan Sunny.



DEALER NETWORK



Map drawn is not to scale. Updated till 1st March, 2012

SHIFT_ the way you move

A Shift is both an invitation and a challenge. A challenge to open your mind to whatever feels unfamiliar. To re-evaluate whatever feels too familiar. And to ask questions different from those everyone else is asking. At Nissan, we're asking these very questions every day. The result is a line of vehicles that represent a pure, uncompromising **SHIFT_** from the ordinary.

Nissan 370z accolades and recognitions in India -
 Import Sports Car of the Year 2010 - **Golden Steering Wheel**
 Sports Car of the Year 2010 - **BBC Top Gear**



Nissan Leaf - 2011 **European Car of the Year**
 2011 **World Car of the Year**
 2011 **Japan Car of the Year**



Nissan Pivo- **Concept Car**



Nissan Motor Co, Ltd. reserves the right to make any changes without notice concerning colours, features, equipment or specifications detailed in this brochure, or to discontinue individual models. The colours of vehicles delivered may differ slightly from those in this brochure. The specifications vary for different countries depending on local market conditions. Please consult your local dealer to ensure that the vehicle is delivered in accordance with your expectations.

Nissan Motor India Private Limited
www.nissan.in

Issued in March 2012. Printed in India.
Subject to change without prior notice.

Dealer Address & Stamp