



Innovation that excites

2015 PATHFINDER®

NISSAN PATHFINDER®

What if your SUV could put a smile on your face, confidence in your hands and goose bumps all over? Here are just a few ways Pathfinder® gives you an unforgettable drive.

Ready for tough terrain. Pathfinder®'s intuitive 4WD gives you the capability you need with a class-exclusive choice of 2WD, Auto and 4WD Lock modes.¹

3 rows of flexibility. With the EZ Flex® Seating System's LATCH AND GLIDE™ technology, the right side of the 2nd row glides and tilts forward for 3rd row access, even with a child seat safely strapped in.²

Efficiency expert. The Pathfinder® Hybrid sips fuel while giving you the capability you expect. And thanks to its smaller and slimmer battery pack, there's virtually no loss of rear seat leg room or cargo space.

Looking for more? Visit Pathfinder® on Facebook® or Twitter® to see what owners have to say.

And follow Nissan Canada on:



Innovation that excites

visit nissan.ca

¹Ward's Large Cross/Utility Market Segmentation. MY15 Pathfinder® vs. 2015 and 2014 Large Cross/Utility Class. ²Slide function should not be performed with the CRS occupied. Facebook® is a registered trademark of Facebook, Inc. Twitter® is a registered trademark of Twitter, Inc. YouTube® is a registered trademark of Google Inc.

All illustrations, photographs and specifications in this brochure are based on the latest product information. See actual vehicle for complete accuracy. Nissan Canada Inc. reserves the right to make changes at any time, without notice, in prices, colours, materials, equipment, specifications and models, and to discontinue models or equipment. For information on additional options and accessories, contact your Nissan Dealership. Registered trademarks are property of their respective owners.

At nissan.ca, you'll find a way to "build your own Nissan," a dealer locator, and more information about key Nissan support services. The Nissan names, logos, product names, feature names, and slogans are trademarks owned by or licenced to Nissan Motor Co. Ltd. and/or its North American subsidiaries. **Always wear your seat belt, and please don't drink and drive.** Printed in September 2014. Catalogue number: 99999-PTH15EN. © 2014 Nissan Canada Inc. All rights reserved.

WHAT IF
EVERY DAY WAS AN
ADVENTURE WORTH SHARING?

There's a big bright world out there, and with a little help from the 2015 Pathfinder,[®] you're ready to see more. Choose the Hybrid, combining efficiency with all the capability you expect from a Pathfinder,[®] or the powerful V6, with the highest standard towing rating in its class.^{1,2} On every Pathfinder,[®] you'll find a standard CVT transmission for seamless power and an available 4-Wheel Drive system with class-exclusive driver-selectable modes.¹ Stretch out in the largest interior in its class,¹ with a third row that's spacious and surprisingly easy to get into. And once the trail is behind you, advanced technologies like Rear Cross Traffic Alert and class-exclusive Around View[®] Monitor help keep an eye on the situation.^{1,3,4} So, load up, bring some friends, and move out. Your next adventure is waiting.



¹Ward's Large Cross/Utility Market Segmentation. MY15 Pathfinder[®] vs. 2015 and 2014 Large Cross/Utility Class. ²See Nissan Towing Guide and Owner's Manual for proper use. ³Parking aid/convenience feature. Cannot completely eliminate blind spots. May not detect every object and does not warn of moving objects. Always check surroundings and turn to look behind you before moving vehicle. ⁴Not a substitute for proper backing procedures. May not detect all moving vehicles. Speed and other limitations apply. See Owner's Manual for details.

Nissan Pathfinder[®] Platinum shown in Java Metallic with optional equipment.



Enjoy 5-star accommodations, before you even get to the lodge. Pathfinder® surrounds you with premium comforts, including standard Tri-Zone Automatic Temperature Control (ATC) and available features including heated and cooled front seats, heated 2nd-row seats, and heated steering wheel! With available navigation and live traffic updates, plus an available dual memory seating system and a Bose® Premium Audio System, you've got luxury accommodations – without any reservations.^{2,3}

Nissan Pathfinder® Platinum shown in Almond Leather with optional equipment. U.S. instrumentation shown.

¹Tri-Zone operation requires compatible auxiliary media system. See Owner's Manual for details. ²Factory-installed option. Never program while driving. GPS mapping may not be detailed in all areas or reflect current road status. ³NavTraffic®/SiriusXM® Traffic is available in select North American markets. In Canada, at time of printing, incident and flow data is available for 12 metropolitan areas of Canada (Vancouver, Calgary, Edmonton, Toronto, Ottawa, Montreal, Quebec City, Hamilton, St. Catharines, Kitchener, Guelph, and London). Subscription sold separately after trial period. Subscriptions subject to customer agreement at siriusxm.ca/terms. Fees and programming subject to change. © 2014 Sirius XM Canada Inc. Sirius® XM®, SiriusXM®, and NavTraffic® are registered trademarks of Sirius XM Radio Inc. All other trademarks are property of their respective owners. Bose® is a registered trademark of The Bose Corporation.



BECAUSE EVERYONE SHOULD COME ALONG.

In Pathfinder,[®] capability goes way beyond taking on rugged conditions, it's conquering the real world you face every day. That means more than just seating for seven. It means seating for seven with best-in-class passenger room,¹ including a 2nd row that slides over five inches for stretch-out room and 3rd-row reclining seats.^{2,3} And with premium features like an available Dual Panorama Moonroof and standard rear A/C, this is one time where one size fits all beautifully.

¹Ward's Large Cross/Utility Market Segmentation. MY15 Pathfinder[®] vs. 2015 and 2014 Large Cross/Utility Class. ²Slide function should not be performed with the CRS occupied. ³Passengers should not ride in the reclined position while the vehicle is in motion. Cargo and load capacity limited by weight and distribution. Always secure all cargo.

NISSAN EZ FLEX® SEATING SYSTEM

INNOVATION THAT GIVES EVERYONE AN OPEN INVITATION.

What if getting to any seat was easy? With the innovative **EZ Flex® Seating System**, the 2nd row glides and tilts forward for easy access to the spacious rear seat. And once you're in the 3rd row, you'll find it exceptionally comfortable, thanks to reclining seats.^{1,2}

Pathfinder®'s family-friendly, too. With Pathfinder®'s **LATCH AND GLIDE™** technology, you can even tilt and slide the right side of the 2nd row with a child seat securely strapped in.¹



Fold-flat Rear Seats. Cargo? Pathfinder® makes easy work of it, with folding 2nd- and 3rd-row seats that create a virtually flat floor and up to 79.8 cubic feet of cargo space.³

Under-floor Storage. There's also an under-floor storage area that keeps valuables out of sight. It's easily accessed even when the 3rd row is upright, for extra cargo space when you've got seven on board.³

Power Liftgate. Easy loading comes at the touch of a finger. Pathfinder®'s available power liftgate can be opened from a button located on the liftgate, on the dashboard near the driver, or on your Nissan Intelligent Key.[®]

¹Slide forward function should not be performed with the CRS occupied. ²Passengers should not ride in the reclined position while the vehicle is in motion. ³Cargo and load capacity limited by weight and distribution. Always secure all cargo.



Nissan Pathfinder® Platinum shown in Almond Leather.

GETTING A GREAT VIEW WHEREVER YOU LOOK.

Tri-Zone Entertainment. If you've ever taken a trip with kids, you probably know it's hard to please everyone. But with Pathfinder®'s available Tri-Zone Entertainment System, you actually can! The rear monitors can play individually, giving a choice of DVDs, video games, photos and more that you can control from the audio system's 203 mm (8") VGA screen. And with those in back wearing wireless headphones, you can adjust the 13-speaker Bose® audio system to play only in front, letting you enjoy your own choice of entertainment in perfect harmony.



Advanced Navigation. So much more than just maps, Pathfinder®'s available touch-screen Nissan Navigation System gives you live traffic updates to help keep you in the know and on the move.^{2,3}



iPod® Integration. Your music at your fingertips. Just plug in to Pathfinder®'s available USB input and control your iPod® through the audio system, including the remote controls mounted on the steering wheel. Rock on!⁴



Advanced Drive-Assist® Display. From trip computer to 4WD torque distribution, the Advanced Drive-Assist® Display serves up info right in front of you – helping to minimize time looking away. Its intuitive 3-D depth and tilt design help you take it all in quicker.^{5,6}

¹Tri-Zone operation requires compatible auxiliary media system. See Owner's Manual for details. ²Factory-installed option. Never program while driving. GPS mapping may not be detailed in all areas or reflect current road status. ³NavTraffic®/SiriusXM® Traffic is available in select North American markets. In Canada, at time of printing, incident and flow data is available for 12 metropolitan areas of Canada (Vancouver, Calgary, Edmonton, Toronto, Ottawa, Montreal, Quebec City, Hamilton, St. Catharines, Kitchener, Guelph, and London). Subscription sold separately after trial period. Subscriptions subject to customer agreement at siriusxm.ca/terms. Fees and programming subject to change. © 2014 Sirius XM Canada Inc. Sirius® XM®, SiriusXM®, and NavTraffic® are registered trademarks of Sirius XM Radio Inc. All other trademarks are property of their respective owners. ⁴Driving is serious business and requires your full attention. If you have to use the connected device while driving, exercise extreme caution at all times so full attention may be given to vehicle operation. ⁵Information displayed is dependent on how vehicle is equipped. ⁶Even with Advanced Drive-Assist® Display, only use phone or other communication devices when safe. Bose® is a registered trademark of The Bose Corporation. iPod® is a registered trademark of Apple, Inc. All rights reserved. iPod® not included.

Nissan Pathfinder® Platinum shown in Almond Leather with optional equipment. U.S. instrumentation shown.

OUTSTANDING FUEL ECONOMY WITH BEST-IN-CLASS TOWING – THAT’S ONE GREAT CATCH.^{1,2}

Efficiency, brought to you by the Next-Generation Xtronic CVT.[®] With Pathfinder[®]'s class-exclusive Xtronic CVT[®] transmission, you have a virtually gearless wonder.¹ It can hold the engine at the ideal rpm for the job, giving you a wave of power when you need it and running low rpm for quiet, efficient cruising when you don't. Proof? An impressive highway fuel economy of 8.6 L/100 km (33 MPG).³

Power, courtesy of a 3.5-L V6 engine. Seven on board, a big beautiful boat in tow. This is the stuff that tests what an SUV is made of. Pathfinder[®] takes it on with 260 HP of 3.5-L V6 muscle and a CVT that knows the engine's sweet spot for the power you need, giving a standard 5000 lbs. towing rating² – the highest standard capacity in its class.¹ And if you tow frequently, consider the available tow hitch receiver with 7-pin wiring harness (see Specifications).²



Intuitive 4WD. With Pathfinder[®]'s available All-Mode 4x4-i, you've got a system that's capable on-road and off. With class-exclusive driver selectable modes,¹ you can choose full-time 2WD for maximum efficiency. Auto Mode constantly monitors conditions and adjusts the balance of power between front and rear wheels for best traction. Challenging conditions? 4WD Lock Mode is your choice.



3.5-L V6 260_{HP} 240_{LB-FT} TORQUE 5000_{LBS.} MAXIMUM TOWING²

IMPORTANT: Starting with 2015 model year vehicles, the Government of Canada has mandated new fuel economy test methods to better approximate typical driving conditions and styles. These new 5-cycle test methods are more representative of a vehicle's on road fuel consumption compared to the previous 2-cycle testing methodology, and can produce fuel consumption ratings that are up to 20 percent higher than the previous ratings. Fuel Economy estimates for the Nissan 2015 model year vehicles may seem less favourable compared to previous years and some competing vehicles that have not yet reported based on new testing criteria. 2015 vehicles do not consume more fuel than the comparable 2014 vehicle under the same driving conditions. For more information, please visit nissan.ca/fuel2015

¹Ward's Large Cross/Utility Market Segmentation. MY15 Pathfinder[®] vs. 2015 and 2014 Large Cross/Utility Class. ²See Nissan Towing Guide and Owner's Manual for proper use. ³2015 Fuel Economy Estimate for 2WD model. Actual mileage may vary with driving conditions — use for comparison only. 2015 Pathfinder[®] fuel economy estimates based on new Transportation Canada 5-cycle fuel economy testing regulations. Cargo and load capacity limited by weight and distribution. Always secure all cargo.

Nissan Pathfinder[®] Platinum shown in Cayenne Red with optional equipment.



NISSAN HYBRID TECHNOLOGY INNOVATION THAT LOVES TO TRAVEL OFF THE BEATEN PATH.

The road to most hybrids is paved with compromise. Sure, you get better fuel economy, but it often comes with compromises on capability and comfort – and costs a lot more, too. How about a smarter solution? Pathfinder[®] Hybrid is thrifty from the word go, with auto-stop/start technology that can shut the engine down when you're at a stoplight, and starts instantaneously as you pull away. It's also efficient at higher speeds where it can "coast," reducing engine to idle and disconnecting from the transmission when power isn't needed.



You can view Hybrid information on the available Nissan Navigation System's 203 mm (8") VGA display.

8.5 L/100 km (33 MPG) HWY³ **250** TOTAL HORSEPOWER **243** LB-FT TORQUE **859** KM PER TANK

A supercharged 4-cylinder engine combined with an electric motor provides strong acceleration, while the All-Mode 4x4-i 4WD gives the go-anywhere capability you expect from a Pathfinder[®]. And with a rear-mounted battery pack that's smaller and slimmer than those in other hybrids, there's virtually no loss of rear leg room or cargo space. Pathfinder[®] Hybrid's even designed to be affordable – another road that most other hybrids don't like to travel.



Nissan Pathfinder[®] Hybrid Platinum shown in Pearl White with optional equipment.



NISSAN AROUND VIEW® MONITOR¹
IT'S GOT YOUR BACK.
AND THE REST OF YOU, TOO.

What if parallel parking was easier? A rearview monitor is great when backing up – but when it comes to parking, it's nice to see more than just what's directly behind you. That's why Pathfinder® offers an available class-exclusive Around View® Monitor.¹,² Four cameras give you a virtual 360° bird's-eye view of your vehicle, with selectable split-screen close-ups of the front, rear, and curb-side views, so you can get a better look.³ And since all obstacles aren't stationary, new Rear Cross Traffic Alert helps keep an eye around the rear of your Pathfinder® and can warn you about moving vehicles detected in your vicinity.⁴

¹Parking aid/convenience feature. Cannot completely eliminate blind spots. May not detect every object and does not warn of moving objects. Always check surroundings and turn to look behind you before moving vehicle. ²Ward's Large Cross/Utility Market Segmentation. MY15 Pathfinder® and Pathfinder® Hybrid vs. 2014 competitors. ³Virtual composite 360° view. ⁴Not a substitute for proper backing procedures. May not detect all moving vehicles. Speed and other limitations apply. See Owner's Manual for details.

RIGHT ON THE NOSE

In Drive, the display gives you both a front and overhead view, so you know just how far to pull up – without going too far.

COMPLETE THE PICTURE

Located under your driver's side mirror, this camera helps round out your virtual 360° bird's-eye view, whether you're in Drive or Reverse.³

SPARE YOUR WHEELS

In Drive or Reverse, you can push the camera button to switch out the overhead for a side view. A great help for seeing how close you are to the curb.



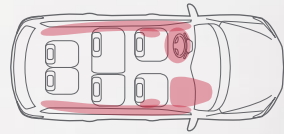
NO MORE BUMPER CARS

In Reverse, the display helps you see what's directly behind you, while the overhead view helps with shorter objects otherwise hidden below your window.

NISSAN SAFETY SHIELD® PHILOSOPHY

SURROUND YOURSELF WITH CONFIDENCE.

Wouldn't it be cool if you had the confidence you need for every part of your drive? The Nissan Safety Shield® is a comprehensive approach to safety that guides the engineering and development of every vehicle we make. The features described here are just some of many on your Nissan, helping to protect you and yours by focusing on three key areas: keeping an eye on your vehicle's systems and the surroundings, assisting in handling unexpected situations, and helping to keep you safe in the unfortunate event of an accident.

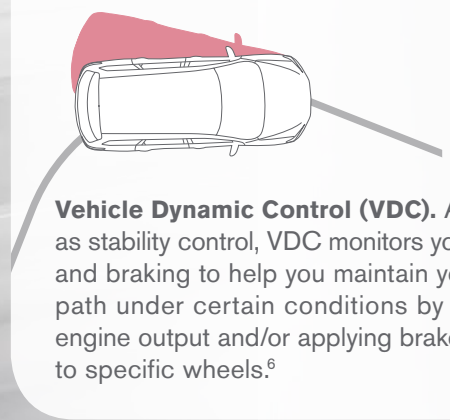
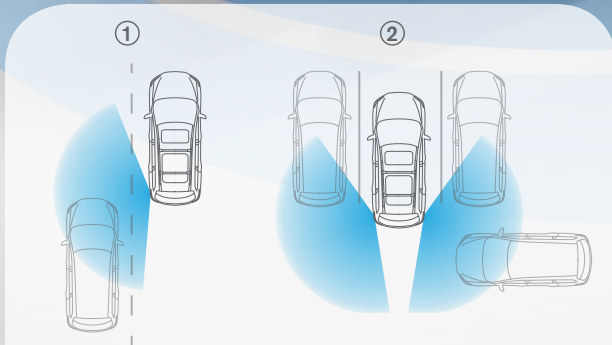


6 Standard Airbags. When a collision is unavoidable, Nissan's Zone Body construction helps absorb the impact while the advanced seat belt and airbag systems help protect passengers.¹

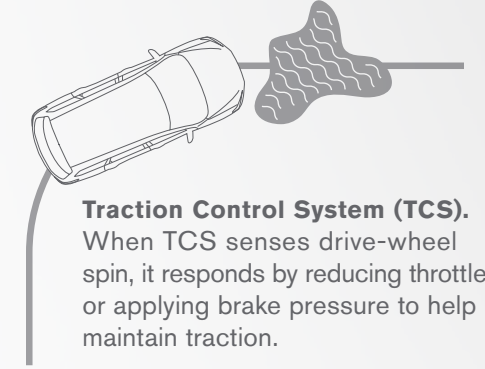
Tire Pressure Monitoring System. With this standard feature, when your tire pressure is low, an icon illuminates on your dash to let you know. When filling your tires, the Easy-Fill Tire Alert gives you a friendly beep of the horn when you've reached the right pressure.^{2,3}

1. Blind Spot Warning (BSW). Available BSW turns on a warning light if a vehicle is detected in the blind spot area, and sounds a warning tone if you signal to change lanes.⁴

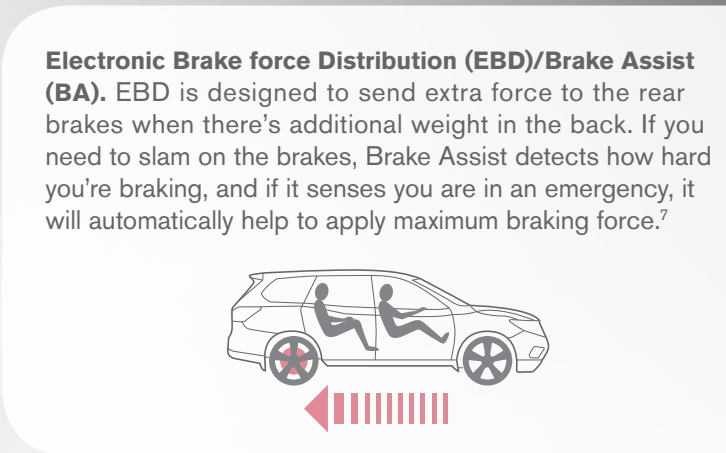
2. Rear Cross Traffic Alert. When your Pathfinder® is in Reverse, available Rear Cross Traffic Alert helps to warn you of moving object from either the left or the right side of the rear of the vehicle.⁵



Vehicle Dynamic Control (VDC). Also known as stability control, VDC monitors your steering path and braking to help you maintain your steered path under certain conditions by reducing engine output and/or applying brake pressure to specific wheels.⁶



Traction Control System (TCS). When TCS senses drive-wheel spin, it responds by reducing throttle or applying brake pressure to help maintain traction.



Electronic Brake force Distribution (EBD)/Brake Assist (BA). EBD is designed to send extra force to the rear brakes when there's additional weight in the back. If you need to slam on the brakes, Brake Assist detects how hard you're braking, and if it senses you are in an emergency, it will automatically help to apply maximum braking force.⁷

snug-kids® Nissan safety engineers have dedicated thousands of hours to evaluating hundreds of child restraints in Nissans. The result: an industry first, The Snug Kids® Child Safety Seat Fit Guide. This guide lists child seats that fit the rear seats of Nissan vehicles, as well as offers invaluable tips on correct installation. Look for the latest Fit Guide at Nissan.ca/owners/en.



¹Airbags are only a supplemental restraint system; always wear your seat belt. Even with the occupant-classification sensor, rear-facing child restraints should not be placed in the front-passenger's seat. Also, in addition to any other requirement of applicable law, all children 12 and under should ride in the rear seat properly secured in child restraints, booster seats, or seat belts, according to their size. Airbags will only inflate in certain accidents; see your Owner's Manual for details. Inflated airbags shown for illustration purposes only, actual coverage area may differ. Airbags deflate after deployment. ²TPMS is not a substitute for regular tire pressure checks. ³Vehicle must be on for the Easy-Fill Tire Alert to operate. ⁴Blind Spot Warning is not a substitute for proper lane change procedures. The system will not prevent contact with other vehicles or accidents. It may not detect every vehicle or object around you. ⁵Not a substitute for proper backing procedures. May not detect all moving vehicles. Speed and other limitations apply. See Owner's Manual for details. ⁶VDC, which should remain on when driving except when freeing the vehicle from mud or snow, cannot prevent accidents due to abrupt steering, carelessness, or dangerous driving techniques. ⁷Brake Assist is only an aid to assist the driver and is not a collision warning or avoidance device. It is the driver's responsibility to be in control of the vehicle at all times.

CHOOSE YOUR TRIM LEVEL

V6 ENGINE

S

260 HP 3.5-litre V6 engine, Xtronic CVT® (Continuously Variable Transmission), Available All-Mode 4x4-i intuitive 4WD system, hill start assist, 18" aluminum-alloy wheels, 7-passenger seating capacity, EZ Flex® Seating System, Tri-Zone Automatic Temperature Control (ATC), Advanced Drive-Assist® Display, remote keyless entry, Push Button Ignition, power windows, AM/FM/in-dash 6-CD audio system with six speakers, MP3/WMA CD playback capability, auxiliary audio input jack,¹ illuminated steering wheel-mounted audio controls, Nissan Advanced Airbag System, Vehicle Dynamic Control (VDC) with Traction Control System (TCS), Tire Pressure Monitoring System (TPMS) with Easy-Fill Tire Alert



SV

INCLUDES S EQUIPMENT PLUS:

8-way power adjustable driver's seat, Smart Auto Headlights, fog lights, roof rails, power liftgate, Information Centre with 178 mm (7") QVGA colour monitor, RearView Monitor, Rear Sonar System, individual tire pressure display, Bluetooth® Hands-Free Phone System,² Nissan Intelligent Key,³ auto-dimming rearview mirror, HomeLink® universal garage door opener, power windows with front one-touch auto-up/down, variable intermittent speed-sensitive flat-blade windshield wipers, dual illuminated visor vanity mirrors, heated cloth front seats, heated steering wheel, leather-wrapped steering wheel and shift knob, AM/FM/CD audio system, USB connection port,¹ plug-in VTR jack,¹ SiriusXM® Satellite Radio³



SL

INCLUDES SV EQUIPMENT PLUS:

Tow hitch receiver with 7-pin trailer tow wiring harness, leather-appointed seats and door trim, chrome body side mouldings, outside mirrors with reverse tilt-down feature, Remote Engine Start System, rearview mirror-integrated digital compass, welcome lighting, heated second-row seats, driver's seat and outside mirrors position memory, driver's seat power lumbar support, 4-way power adjustable passenger's seat, wood-tone trim, 120-volt AC power outlet, front stainless steel kick plates

KEY AVAILABLE PACKAGE:

SL Premium Tech Package



Platinum

INCLUDES SL EQUIPMENT PLUS:

20" Aluminum-alloy wheels, Dual Panorama Moonroof, Nissan Hard Drive Navigation System with 203 mm (8") VGA touch-screen monitor and voice recognition, NavTraffic,³ Around View® Monitor, Bose® audio system with 13 speakers, including Bose® Acoustic Waveguide technology, Tri-Zone Entertainment System with dual head restraint-mounted 178 mm (7") monitors, remote control two wireless headphones, rear plug-in VTR jack,¹ DVD video playback capability, streaming audio via Bluetooth® wireless technology,² climate-controlled front seats (heated and cooled), power-tilt/telescoping steering column, steering-wheel position memory



HYBRID

SV

INCLUDES V6 SV EQUIPMENT PLUS:

2.5-litre 4-cylinder SuperCharged engine and electric motor utilizing Intelligent Dual Clutch System and lithium-ion battery, electrically driven regenerative brakes, standard All-Mode 4x4-i intuitive 4WD system, LED taillights



Platinum

INCLUDES SV EQUIPMENT PLUS:

20" Aluminum-alloy wheels, Dual Panorama Moonroof, tow hitch receiver with 7-pin trailer tow wiring harness, leather-appointed seats and door trim, chrome body side mouldings, outside mirrors with reverse tilt-down feature, Remote Engine Start System, Navigation System-integrated digital compass, welcome lighting, Nissan Hard Drive Navigation System with 203 mm (8") VGA touch-screen monitor and voice recognition, NavTraffic,³ Around View® Monitor, Bose® audio system with 13 speakers, including Bose® Acoustic Waveguide technology, Tri-Zone Entertainment System with dual head restraint-mounted 178 mm (7") monitors, remote control two wireless headphones, rear plug-in VTR jack,¹ DVD video playback capability, streaming audio via Bluetooth® wireless technology,² 120-volt AC power outlet, climate-controlled front seats (heated and cooled), heated second-row seats, driver's seat and outside mirrors position memory, driver's seat power lumbar support, 4-way power adjustable passenger's seat, power-tilt/telescoping steering column, steering-wheel position memory, wood-tone trim, front stainless steel kick plates



Nissan Pathfinder® Hybrid Platinum shown in Gun Metallic with optional equipment.

Images may show additional available equipment. ¹Driving is serious business and requires your full attention. If you have to use the connected device while driving, exercise extreme caution at all times so full attention may be given to vehicle operation. ²Availability of specific features is dependent upon the phone's Bluetooth® support. Please refer to your phone Owner's Manual for details. Bluetooth® word mark and logos are owned by Bluetooth SIG, Inc., and any use of such marks by Nissan is under licence. ³XM® and SiriusXM® Satellite Radio is available in the 10 Canadian provinces and the 48 contiguous United States. Basic monthly subscription required and sold separately after trial period. NavTraffic®/SiriusXM® Traffic is available in select North American markets. In Canada, at time of printing, incident and flow data is available for 12 metropolitan areas of Canada (Vancouver, Calgary, Edmonton, Toronto, Ottawa, Montreal, Quebec City, Hamilton, St. Catharines, Kitchener, Guelph, and London). Subscription sold separately after trial period. All subscriptions subject to customer agreement at siriusxm.ca/terms. All fees and programming subject to change. © 2014 Sirius XM Canada Inc. The Sirius® XM®, and SiriusXM®, names and all related marks and logos are trademarks of Sirius XM Radio Inc. All other trademarks are the property of their respective owners. Cargo and load capacity limited by weight and distribution. Always secure all cargo. Heavy loading of the vehicle with cargo, especially on the roof, will affect the handling and stability of the vehicle. Bose® is a registered trademark of The Bose Corporation. HomeLink® is a registered trademark of Johnson Controls Technology Company. iPod® is a registered trademark of Apple, Inc. All rights reserved. iPod® not included.

CHOOSE YOUR COLOUR



S/SV CHARCOAL CLOTH



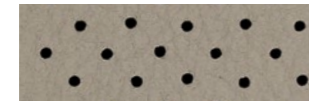
SL CHARCOAL LEATHER



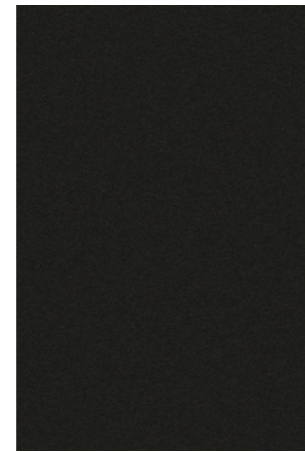
SL ALMOND LEATHER



PLATINUM CHARCOAL LEATHER



PLATINUM ALMOND LEATHER



Magnetic Black¹ G41



Gun Metallic¹ KAD



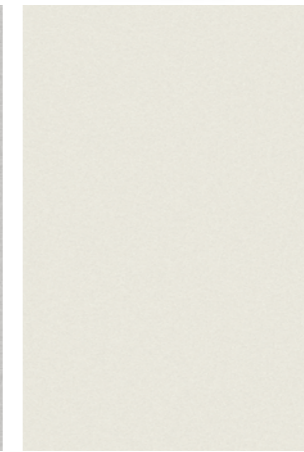
Java Metallic¹ CAJ



Cayenne Red¹ NAH



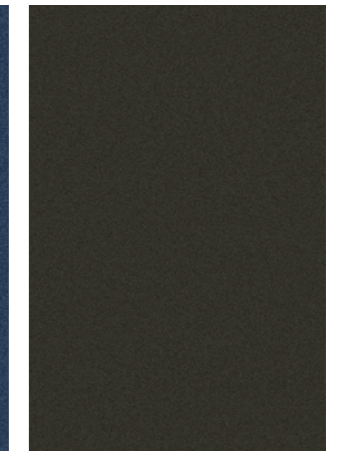
Brilliant Silver¹ K23



Pearl White¹ QAB



Arctic Blue Metallic¹ RBG



Midnight Jade¹ EAN

■ Standard
 ■¹Extra cost option

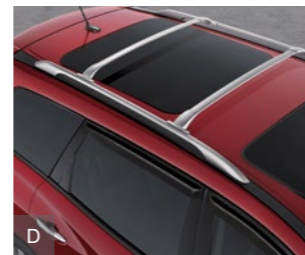
	S	SV	SL	Platinum	S	SV	SL	Platinum	S	SV	SL	Platinum	S	SV	SL	Platinum	S	SV	SL	Platinum	S	SV	SL	Platinum	
ALMOND LEATHER																									
CHARCOAL CLOTH	■	■			■	■																			
CHARCOAL LEATHER																									

GENUINE NISSAN ACCESSORIES

Every Genuine Nissan Accessory is: custom-fit, custom-designed and durability-tested; backed by Nissan's 3 year/60,000 km Accessories limited warranty; and can be financed when installed by dealer at time of purchase.²

- A. Hood Protector**
Give your hood a fighting chance against bugs and road grime.
- B. Tow Package, Class III³**
Hook up with secure towing from Nissan's custom frame-mounted design
- C. Remote Engine Start System⁴**
Heat or cool your Pathfinder[®] before you get in.
- D. Roof Rail Crossbars⁵**
Great for bringing along your skis or bike.

- Additional Accessories:**
- All-season Floor Mats
 - Fog Lights
 - Stainless Steel Rear Bumper Protector
 - Cargo Area Protector⁵
 - Cargo Net⁵
 - Rear Cargo Cover⁵
 - Illuminated Kick Plates
 - Interior Accent Lighting
 - Side-window Deflectors
 - Hatch Tent
 - And More



See your Nissan dealer for details, or go to accessories.nissan.ca

BUYING AND OWNING

Finance Options Through Nissan Canada Finance, we offer many attractive lease and purchase options that can be tailored to your individual needs. We have unique programs such as the Nissan Grad Program or the New Canadian Program designed just for you. Please visit our website Nissan.ca/finance to explore all of the options available. We have also made it easy to pre-qualify online. All of our programs come with competitive rates and terms. With our flexible options, driving home a new Nissan has never been easier. Consult your local Nissan Dealership for complete details.

No-Nonsense Warranty Every 2015 Nissan is covered by a 3 year/60,000 km⁶ Comprehensive New Vehicle Warranty, a 5 year/100,000 km⁶ Powertrain Warranty, an 8 year/130,000 km⁶ Emission Control Warranty on selected components, and a 5 year/unlimited km Corrosion Perforation Warranty. As a Nissan owner, you'll also receive a 3 year Roadside Assistance program available to you 24 hours a day. Terms, conditions and exclusions apply. See Warranty Information Booklet for complete details.

Added Security Plan (ASP) For ultimate peace of mind, consider the Nissan Added Security Plan. It's our commitment to be there for you, and to help you leave your worries behind. Different plans, available for both purchased and leased vehicles, let you tailor the coverage to your driving habits.

Security+Plus™ Prepaid Maintenance Plan The smart choice when it comes to maintaining your new Nissan. Honoured at all participating Nissan Dealers in Canada and the U.S., your vehicle is cared for by factory-trained technicians using Genuine Nissan Parts. And best of all, there's no worrying about price increases on parts or service in the future. A variety of plans are available. Ask your Dealer for details.



Nissan has taken care to ensure that the colour swatches presented here are the closest possible representations of actual vehicle colours. Swatches may vary slightly due to the printing process and whether viewed in daylight, fluorescent or incandescent light. Please see the actual colours at your local Nissan dealer.

²See your Nissan Dealership and read the actual limited warranty. ³See Nissan Towing Guide and Owner's Manual for proper use. ⁴Provincial laws may apply; review local laws before using. ⁵Cargo and load capacity limited by weight and distribution. Always secure all cargo. Heavy loading of the vehicle with cargo, especially on the roof, will affect the handling and stability of the vehicle. ⁶Whichever occurs first.

SPECIFICATIONS

Engines	S ¹	SV	SL ¹	Platinum
3.5-litre DOHC 24-valve V6 engine	<input checked="" type="checkbox"/>	<input checked="" type="checkbox"/>	<input checked="" type="checkbox"/>	<input checked="" type="checkbox"/>
Horsepower – 260 HP @ 6400 rpm				
Torque – 240 lb-ft @ 4400 rpm				
Emissions – LEV2 ULEV				
2.5-litre 4-cylinder SuperCharged engine and electric motor utilizing Intelligent Dual Clutch System and lithium-ion battery		<input checked="" type="checkbox"/>		<input checked="" type="checkbox"/>
Hybrid System Net Power – 250 HP				
Engine Horsepower – 230 HP @ 5600 rpm				
Engine Torque – 243 @ 3600 rpm				
Electric Motor Power – 15 kW				
Emissions – LEV2 ULEV				
Continuously Variable Valve Timing Control System (CVTCS) on intake valves	<input checked="" type="checkbox"/>	<input checked="" type="checkbox"/>	<input checked="" type="checkbox"/>	<input checked="" type="checkbox"/>
Variable induction system	<input checked="" type="checkbox"/>	<input checked="" type="checkbox"/>	<input checked="" type="checkbox"/>	<input checked="" type="checkbox"/>
Nissan Direct Ignition system with iridium-tipped spark plugs	<input checked="" type="checkbox"/>	<input checked="" type="checkbox"/>	<input checked="" type="checkbox"/>	<input checked="" type="checkbox"/>
Electronic drive-by-wire throttle	<input checked="" type="checkbox"/>	<input checked="" type="checkbox"/>	<input checked="" type="checkbox"/>	<input checked="" type="checkbox"/>
Engine block heater	<input checked="" type="checkbox"/>	<input checked="" type="checkbox"/>	<input checked="" type="checkbox"/>	<input checked="" type="checkbox"/>

Drivetrain	S ¹	SV	SL ¹	Platinum
Front-Wheel Drive (FWD)	<input checked="" type="checkbox"/>			
All-Mode 4x4-i intuitive 4WD system	<input type="checkbox"/>	<input checked="" type="checkbox"/>	<input checked="" type="checkbox"/>	<input checked="" type="checkbox"/>
Hill start assist	<input checked="" type="checkbox"/>	<input checked="" type="checkbox"/>	<input checked="" type="checkbox"/>	<input checked="" type="checkbox"/>
Hill descent control (4WD models only)	<input checked="" type="checkbox"/>	<input checked="" type="checkbox"/>	<input checked="" type="checkbox"/>	<input checked="" type="checkbox"/>
Xtronic CVT [®] (Continuously Variable Transmission)	<input checked="" type="checkbox"/>	<input checked="" type="checkbox"/>	<input checked="" type="checkbox"/>	<input checked="" type="checkbox"/>

Brakes	S ¹	SV	SL ¹	Platinum
4-wheel vented disc brakes	<input checked="" type="checkbox"/>	<input checked="" type="checkbox"/>	<input checked="" type="checkbox"/>	<input checked="" type="checkbox"/>
Anti-lock Braking System (ABS)	<input checked="" type="checkbox"/>	<input checked="" type="checkbox"/>	<input checked="" type="checkbox"/>	<input checked="" type="checkbox"/>
Electronic Brake force Distribution (EBD)	<input checked="" type="checkbox"/>	<input checked="" type="checkbox"/>	<input checked="" type="checkbox"/>	<input checked="" type="checkbox"/>
Brake Assist	<input checked="" type="checkbox"/>	<input checked="" type="checkbox"/>	<input checked="" type="checkbox"/>	<input checked="" type="checkbox"/>
Electrically driven regenerative brakes		<input checked="" type="checkbox"/>		<input checked="" type="checkbox"/>

Suspension/Steering	S ¹	SV	SL ¹	Platinum
Independent strut front suspension	<input checked="" type="checkbox"/>	<input checked="" type="checkbox"/>	<input checked="" type="checkbox"/>	<input checked="" type="checkbox"/>
Independent multi-link rear suspension	<input checked="" type="checkbox"/>	<input checked="" type="checkbox"/>	<input checked="" type="checkbox"/>	<input checked="" type="checkbox"/>
Dual Flow Path [®] shock absorbers	<input checked="" type="checkbox"/>	<input checked="" type="checkbox"/>	<input checked="" type="checkbox"/>	<input checked="" type="checkbox"/>
Front and rear stabilizer bars	<input checked="" type="checkbox"/>	<input checked="" type="checkbox"/>	<input checked="" type="checkbox"/>	<input checked="" type="checkbox"/>
Electronic hydraulic power-assisted speed-sensitive steering	<input checked="" type="checkbox"/>	<input checked="" type="checkbox"/>	<input checked="" type="checkbox"/>	<input checked="" type="checkbox"/>

Wheels/Tires	S ¹	SV	SL ¹	Platinum
18" x 7.5" aluminum-alloy wheels	<input checked="" type="checkbox"/>	<input checked="" type="checkbox"/>	<input checked="" type="checkbox"/>	
20" x 7.5" aluminum-alloy wheels				<input checked="" type="checkbox"/>
P235/65R18 all-season tires	<input checked="" type="checkbox"/>	<input checked="" type="checkbox"/>	<input checked="" type="checkbox"/>	
P235/55R20 all-season tires				<input checked="" type="checkbox"/>

Exterior Features	S ¹	SV	SL ¹	Platinum
Smart Auto Headlights		<input checked="" type="checkbox"/>	<input checked="" type="checkbox"/>	<input checked="" type="checkbox"/>
Fog lights		<input checked="" type="checkbox"/>	<input checked="" type="checkbox"/>	<input checked="" type="checkbox"/>
LED taillights		<input checked="" type="checkbox"/>		<input checked="" type="checkbox"/>
Roof rails		<input checked="" type="checkbox"/>	<input checked="" type="checkbox"/>	<input checked="" type="checkbox"/>
Front tow hook		<input checked="" type="checkbox"/>	<input checked="" type="checkbox"/>	<input checked="" type="checkbox"/>
Tow hitch receiver with 7-pin wiring harness		<input checked="" type="checkbox"/>	<input checked="" type="checkbox"/>	<input checked="" type="checkbox"/>
Dual power heated outside mirrors	<input checked="" type="checkbox"/>	<input checked="" type="checkbox"/>	<input checked="" type="checkbox"/>	<input checked="" type="checkbox"/>
Outside mirrors with tilt-down feature		<input checked="" type="checkbox"/>	<input checked="" type="checkbox"/>	<input checked="" type="checkbox"/>
Chrome body side mouldings		<input checked="" type="checkbox"/>	<input checked="" type="checkbox"/>	<input checked="" type="checkbox"/>
Dual Panorama Moonroof			<input checked="" type="checkbox"/>	<input checked="" type="checkbox"/>
Front UV-reducing solar glass and rear privacy glass	<input checked="" type="checkbox"/>	<input checked="" type="checkbox"/>	<input checked="" type="checkbox"/>	<input checked="" type="checkbox"/>
Splash guards	<input checked="" type="checkbox"/>	<input checked="" type="checkbox"/>	<input checked="" type="checkbox"/>	<input checked="" type="checkbox"/>

Comfort/Convenience	S ¹	SV	SL ¹	Platinum
Advanced Drive-Assist [®] Display	<input checked="" type="checkbox"/>	<input checked="" type="checkbox"/>	<input checked="" type="checkbox"/>	<input checked="" type="checkbox"/>
Information Centre with 178 mm (7") QVGA colour monitor	<input checked="" type="checkbox"/>	<input checked="" type="checkbox"/>	<input checked="" type="checkbox"/>	<input checked="" type="checkbox"/>

Comfort/Convenience (continued)	S ¹	SV	SL ¹	Platinum
Nissan Hard Drive Navigation System with 203 mm (8") VGA touch-screen monitor and voice recognition			<input checked="" type="checkbox"/>	<input checked="" type="checkbox"/>
NavTraffic ^{®3}			<input checked="" type="checkbox"/>	<input checked="" type="checkbox"/>
Rear Sonar System		<input checked="" type="checkbox"/>	<input checked="" type="checkbox"/>	<input checked="" type="checkbox"/>
RearView Monitor		<input checked="" type="checkbox"/>	<input checked="" type="checkbox"/>	<input checked="" type="checkbox"/>
Around View [®] Monitor			<input checked="" type="checkbox"/>	<input checked="" type="checkbox"/>
Push Button Ignition	<input checked="" type="checkbox"/>	<input checked="" type="checkbox"/>	<input checked="" type="checkbox"/>	<input checked="" type="checkbox"/>
Remote keyless entry	<input checked="" type="checkbox"/>	<input checked="" type="checkbox"/>	<input checked="" type="checkbox"/>	<input checked="" type="checkbox"/>
Nissan Intelligent Key [®]	<input checked="" type="checkbox"/>	<input checked="" type="checkbox"/>	<input checked="" type="checkbox"/>	<input checked="" type="checkbox"/>
Power liftgate	<input checked="" type="checkbox"/>	<input checked="" type="checkbox"/>	<input checked="" type="checkbox"/>	<input checked="" type="checkbox"/>
Remote Engine Start System	<input checked="" type="checkbox"/>	<input checked="" type="checkbox"/>	<input checked="" type="checkbox"/>	<input checked="" type="checkbox"/>
Bluetooth [®] Hands-Free Phone System ⁴	<input checked="" type="checkbox"/>	<input checked="" type="checkbox"/>	<input checked="" type="checkbox"/>	<input checked="" type="checkbox"/>
HomeLink [®] universal garage-door opener	<input checked="" type="checkbox"/>	<input checked="" type="checkbox"/>	<input checked="" type="checkbox"/>	<input checked="" type="checkbox"/>
Tri-Zone Automatic Temperature Control (ATC)	<input checked="" type="checkbox"/>	<input checked="" type="checkbox"/>	<input checked="" type="checkbox"/>	<input checked="" type="checkbox"/>
In-cabin microfilter	<input checked="" type="checkbox"/>	<input checked="" type="checkbox"/>	<input checked="" type="checkbox"/>	<input checked="" type="checkbox"/>
Power door locks with auto-locking feature	<input checked="" type="checkbox"/>	<input checked="" type="checkbox"/>	<input checked="" type="checkbox"/>	<input checked="" type="checkbox"/>
Power windows with driver's one-touch auto-down	<input checked="" type="checkbox"/>	<input checked="" type="checkbox"/>	<input checked="" type="checkbox"/>	<input checked="" type="checkbox"/>
Power windows with front one-touch auto-up/down	<input checked="" type="checkbox"/>	<input checked="" type="checkbox"/>	<input checked="" type="checkbox"/>	<input checked="" type="checkbox"/>
Cruise control with steering wheel-mounted controls	<input checked="" type="checkbox"/>	<input checked="" type="checkbox"/>	<input checked="" type="checkbox"/>	<input checked="" type="checkbox"/>
Variable intermittent flat-blade windshield wipers	<input checked="" type="checkbox"/>	<input checked="" type="checkbox"/>	<input checked="" type="checkbox"/>	<input checked="" type="checkbox"/>
Vehicle speed-sensitive intermittent flat-blade windshield wipers	<input checked="" type="checkbox"/>	<input checked="" type="checkbox"/>	<input checked="" type="checkbox"/>	<input checked="" type="checkbox"/>
Rear window intermittent wiper	<input checked="" type="checkbox"/>	<input checked="" type="checkbox"/>	<input checked="" type="checkbox"/>	<input checked="" type="checkbox"/>
Auto-dimming rearview mirror	<input checked="" type="checkbox"/>	<input checked="" type="checkbox"/>	<input checked="" type="checkbox"/>	<input checked="" type="checkbox"/>
Rearview mirror-integrated digital compass	<input checked="" type="checkbox"/>	<input checked="" type="checkbox"/>	<input checked="" type="checkbox"/>	<input checked="" type="checkbox"/>
Navigation System-integrated digital compass			<input checked="" type="checkbox"/>	<input checked="" type="checkbox"/>
Front map lights	<input checked="" type="checkbox"/>	<input checked="" type="checkbox"/>	<input checked="" type="checkbox"/>	<input checked="" type="checkbox"/>
Rear reading lights	<input checked="" type="checkbox"/>	<input checked="" type="checkbox"/>	<input checked="" type="checkbox"/>	<input checked="" type="checkbox"/>
Welcome lighting	<input checked="" type="checkbox"/>	<input checked="" type="checkbox"/>	<input checked="" type="checkbox"/>	<input checked="" type="checkbox"/>
Two 12-volt DC power outlets	<input checked="" type="checkbox"/>	<input checked="" type="checkbox"/>	<input checked="" type="checkbox"/>	<input checked="" type="checkbox"/>
Four 12-volt DC power outlets			<input checked="" type="checkbox"/>	<input checked="" type="checkbox"/>
120-volt AC power outlet	<input checked="" type="checkbox"/>	<input checked="" type="checkbox"/>	<input checked="" type="checkbox"/>	<input checked="" type="checkbox"/>
Sun visors with vanity mirrors and extensions	<input checked="" type="checkbox"/>	<input checked="" type="checkbox"/>	<input checked="" type="checkbox"/>	<input checked="" type="checkbox"/>
Sun visors with illuminated vanity mirrors and extensions	<input checked="" type="checkbox"/>	<input checked="" type="checkbox"/>	<input checked="" type="checkbox"/>	<input checked="" type="checkbox"/>
Tilt/telescoping steering column	<input checked="" type="checkbox"/>	<input checked="" type="checkbox"/>	<input checked="" type="checkbox"/>	<input checked="" type="checkbox"/>
Power-tilt/telescoping steering column	<input checked="" type="checkbox"/>	<input checked="" type="checkbox"/>	<input checked="" type="checkbox"/>	<input checked="" type="checkbox"/>
Front seatback map pockets	<input checked="" type="checkbox"/>	<input checked="" type="checkbox"/>	<input checked="" type="checkbox"/>	<input checked="" type="checkbox"/>
Overhead sunglasses holder	<input checked="" type="checkbox"/>	<input checked="" type="checkbox"/>	<input checked="" type="checkbox"/>	<input checked="" type="checkbox"/>
Eight cup holders and six bottle holders	<input checked="" type="checkbox"/>	<input checked="" type="checkbox"/>	<input checked="" type="checkbox"/>	<input checked="" type="checkbox"/>
Cargo area tie-downs (eight)	<input checked="" type="checkbox"/>	<input checked="" type="checkbox"/>	<input checked="" type="checkbox"/>	<input checked="" type="checkbox"/>
Cargo area under-floor storage	<input checked="" type="checkbox"/>	<input checked="" type="checkbox"/>	<input checked="" type="checkbox"/>	<input checked="" type="checkbox"/>

Seating/Appointments	S ¹	SV	SL ¹	Platinum
6-way manual adjustable driver's seat with manual lumbar	<input checked="" type="checkbox"/>	<input checked="" type="checkbox"/>	<input checked="" type="checkbox"/>	<input checked="" type="checkbox"/>
8-way power adjustable driver's seat with manual lumbar		<input checked="" type="checkbox"/>	<input checked="" type="checkbox"/>	<input checked="" type="checkbox"/>
8-way power adjustable driver's seat with power lumbar			<input checked="" type="checkbox"/>	<input checked="" type="checkbox"/>
Driver's seat and outside mirrors position memory	<input checked="" type="checkbox"/>	<input checked="" type="checkbox"/>	<input checked="" type="checkbox"/>	<input checked="" type="checkbox"/>
Steering-wheel position memory			<input checked="" type="checkbox"/>	<input checked="" type="checkbox"/>
4-way power adjustable front-passenger's seat			<input checked="" type="checkbox"/>	<input checked="" type="checkbox"/>
EZ Flex [®] Seating System with 2nd-row 60/40 split fold-flat bench seat featuring LATCH AND GLIDE™			<input checked="" type="checkbox"/>	<input checked="" type="checkbox"/>
and 3rd-row 50/50 split fold-flat reclining bench seat	<input checked="" type="checkbox"/>	<input checked="" type="checkbox"/>	<input checked="" type="checkbox"/>	<input checked="" type="checkbox"/>
Cloth seat trim	<input checked="" type="checkbox"/>	<input checked="" type="checkbox"/>	<input checked="" type="checkbox"/>	<input checked="" type="checkbox"/>
Leather-appointed seats and door trim			<input checked="" type="checkbox"/>	<input checked="" type="checkbox"/>
Heated front seats	<input checked="" type="checkbox"/>	<input checked="" type="checkbox"/>	<input checked="" type="checkbox"/>	<input checked="" type="checkbox"/>
Climate-controlled front seats (heated and cooled)			<input checked="" type="checkbox"/>	<input checked="" type="checkbox"/>
Heated second-row seats			<input checked="" type="checkbox"/>	<input checked="" type="checkbox"/>
Heated steering wheel			<input checked="" type="checkbox"/>	<input checked="" type="checkbox"/>
Leather-wrapped steering wheel and shift knob	<input checked="" type="checkbox"/>	<input checked="" type="checkbox"/>	<input checked="" type="checkbox"/>	<input checked="" type="checkbox"/>
Wood-tone trim			<input checked="" type="checkbox"/>	<input checked="" type="checkbox"/>
Front stainless steel kick plates	<input checked="" type="checkbox"/>	<input checked="" type="checkbox"/>	<input checked="" type="checkbox"/>	<input checked="" type="checkbox"/>

Standard Optional SL Premium Tech Package

Audio/Entertainment	S ¹	SV	SL ¹	Platinum
AM/FM/CD audio system with in-dash 6-CD changer and six speakers	<input checked="" type="checkbox"/>	<input checked="" type="checkbox"/>	<input checked="" type="checkbox"/>	<input checked="" type="checkbox"/>
AM/FM/CD audio system with six speakers		<input checked="" type="checkbox"/>	<input checked="" type="checkbox"/>	<input checked="" type="checkbox"/>
Bose [®] audio system with AM/FM/CD and 13 speakers, including Bose [®] Acoustic Waveguide technology			<input checked="" type="checkbox"/>	<input checked="" type="checkbox"/>
Tri-Zone Entertainment System with dual head restraint-mounted 178 mm (7") monitors, remote control and two wireless headphones			<input checked="" type="checkbox"/>	<input checked="" type="checkbox"/>
SiriusXM [®] Satellite Radio ³		<input checked="" type="checkbox"/>	<input checked="" type="checkbox"/>	<input checked="" type="checkbox"/>
MP3/WMA CD playback capability	<input checked="" type="checkbox"/>	<input checked="" type="checkbox"/>	<input checked="" type="checkbox"/>	<input checked="" type="checkbox"/>
DVD video playback capability			<input checked="" type="checkbox"/>	<input checked="" type="checkbox"/>
Auxiliary audio input jack	<input checked="" type="checkbox"/>	<input checked="" type="checkbox"/>	<input checked="" type="checkbox"/>	<input checked="" type="checkbox"/>
Auxiliary audio/video input jacks		<input checked="" type="checkbox"/>	<input checked="" type="checkbox"/>	<input checked="" type="checkbox"/>
Rear auxiliary audio/video input jacks			<input checked="" type="checkbox"/>	<input checked="" type="checkbox"/>
USB connection port for iPod [®] interface and other compatible devices		<input checked="" type="checkbox"/>	<input checked="" type="checkbox"/>	<input checked="" type="checkbox"/>
Streaming audio via Bluetooth [®] wireless technology ⁴			<input checked="" type="checkbox"/>	<input checked="" type="checkbox"/>
Radio Data System (RDS)		<input checked="" type="checkbox"/>	<input checked="" type="checkbox"/>	<input checked="" type="checkbox"/>
Speed-sensitive volume control		<input checked="" type="checkbox"/>	<input checked="" type="checkbox"/>	<input checked="" type="checkbox"/>
Illuminated steering wheel-mounted audio controls	<input checked="" type="checkbox"/>	<input checked="" type="checkbox"/>	<input checked="" type="checkbox"/>	<input checked="" type="checkbox"/>

Safety/Security	S ¹	SV	SL ¹	Platinum
Nissan Advanced Airbag System with dual-stage supplemental front airbags with seat belt and occupant-classification sensors	<input checked="" type="checkbox"/>	<input checked="" type="checkbox"/>	<input checked="" type="checkbox"/>	<input checked="" type="checkbox"/>
Driver and front passenger seat-mounted side-impact supplemental airbags	<input checked="" type="checkbox"/>	<input checked="" type="checkbox"/>	<input checked="" type="checkbox"/>	<input checked="" type="checkbox"/>
Roof-mounted curtain side-impact supplemental airbags with rollover sensor for outboard occupant head protection for all three rows	<input checked="" type="checkbox"/>	<input checked="" type="checkbox"/>	<input checked="" type="checkbox"/>	<input checked="" type="checkbox"/>
Vehicle Dynamic Control (VDC) with Traction Control System (TCS)	<input checked="" type="checkbox"/>	<input checked="" type="checkbox"/>	<input checked="" type="checkbox"/>	<input checked="" type="checkbox"/>
Rear Cross Traffic Alert			<input checked="" type="checkbox"/>	<input checked="" type="checkbox"/>
Blind Spot Warning (BSW)			<input checked="" type="checkbox"/>	<input checked="" type="checkbox"/>
Active Brake Limited Slip (ABLS)	<input checked="" type="checkbox"/>	<input checked="" type="checkbox"/>	<input checked="" type="checkbox"/>	<input checked="" type="checkbox"/>
3-point ALR/ELR passenger seat belt system (ELR for driver)	<input checked="" type="checkbox"/>	<input checked="" type="checkbox"/>	<input checked="" type="checkbox"/>	<input checked="" type="checkbox"/>
Front seat belts with pretensioners and load limiters	<input checked="" type="checkbox"/>	<input checked="" type="checkbox"/>	<input checked="" type="checkbox"/>	<input checked="" type="checkbox"/>
Adjustable front, outboard 2nd- and 3rd-row head restraints	<input checked="" type="checkbox"/>	<input checked="" type="checkbox"/>	<input checked="" type="checkbox"/>	<input checked="" type="checkbox"/>
LATCH System (Lower Anchors and Tethers for CHildren)	<input checked="" type="checkbox"/>	<input checked="" type="checkbox"/>	<input checked="" type="checkbox"/>	<input checked="" type="checkbox"/>
Zone Body construction with front and rear crumple zones	<input checked="" type="checkbox"/>	<input checked="" type="checkbox"/>	<input checked="" type="checkbox"/>	<input checked="" type="checkbox"/>
Hood-buckling creases, energy-absorbing steering column and pipe-style steel side-door guard beams	<input checked="" type="checkbox"/>	<input checked="" type="checkbox"/>	<input checked="" type="checkbox"/>	<input checked="" type="checkbox"/>
Tire Pressure Monitoring System (TPMS) with Easy-Fill Tire Alert	<input checked="" type="checkbox"/>	<input checked="" type="checkbox"/>	<input checked="" type="checkbox"/>	<input checked="" type="checkbox"/>
Tire Pressure Monitoring System (TPMS) with individual tire pressure display and Easy-Fill Tire Alert		<input checked="" type="checkbox"/>	<input checked="" type="checkbox"/>	<input checked="" type="checkbox"/>
Immobilizer Key System	<input checked="" type="checkbox"/>	<input checked="" type="checkbox"/>	<input checked="" type="checkbox"/>	<input checked="" type="checkbox"/>
Anti-theft system	<input checked="" type="checkbox"/>	<input checked="" type="checkbox"/>	<input checked="" type="checkbox"/>	<input checked="" type="checkbox"/>

PACKAGE

SL Premium Tech Package

Nissan Hard Drive Navigation System with 203 mm (8") VGA touch-screen monitor and voice recognition • Bose[®] audio system with AM/FM/CD • 13 speakers, including Bose[®] Acoustic Waveguide technology • NavTraffic^{®3} • Streaming audio via Bluetooth[®] wireless technology⁴ • Dual Panorama Moonroof • Around View[®] Monitor • Digital compass (removed in-mirror and integrated into Navigation System)

DIMENSIONS/CAPACITIES/WEIGHTS/FUEL

Dimensions – mm (inches)	
Exterior	
Wheelbase	2900 (114.2)
Overall length	5008 (197.2)
Overall width	1960 (77.2)
Overall height without roof rack	1768 (69.6)
Overall height with roof rack	1783 (70.2)
Track width	1670 (65.7)
Interior (front/2nd row/3rd row)	
Head room without moonroof	1072/1001/960 (42.2/39.4/37.8)
Head room with moonroof	1043/978/927 (41.1/38.5/36.5)
Leg room	1072/1059/781 (42.3/41.7/30.7)
Hip room	1442/1425/1066 (56.8/56.1/42.0)
Shoulder room	1543/1534/1449 (60.7/60.4/57.1)
Cargo	
Maximum length	2004 (78.9)
Maximum width	1167 (45.9)
Maximum height	798 (31.4)

Capacities	
Seating capacity	7
Interior passenger volume – L (cu. ft.)	4468 (157.8)
Cargo capacity with 2nd row upright, 3rd row upright – L (cu. ft.)	453 (16.0)
Cargo capacity with 2nd row upright, 3rd row folded flat – L (cu. ft.)	1201-1354 (42.4-47.8)
Cargo capacity with 2nd row folded flat, 3rd row folded flat – L (cu. ft.)	2260 (79.8)
Fuel tank – L (imp gal)	73 (16.1)
Maximum towing capacity – kg (lbs.)	
V6	2268 (5000)
Hybrid	1588 (3500)

Curb Weights – kg (lbs.)				
Base Total	S	SV	SL	Platinum
2WD	1939 (4274)	–	–	–
4WD	2005 (4421)	2015 (4441)	2050 (4520)	2119 (4671)
Hybrid Base Total	–	SV	–	Platinum
4WD	–	2096 (4620)	–	2179 (4804)

2015 Fuel Consumption Estimates – L/100 km (MPG)		
City/Hwy	V6	Hybrid
2WD	11.9 (24)/8.6 (33)	
4WD	12.1 (23)/8.9 (32)	9.1 (31)/8.5 (33)
Platinum 4WD	12.7 (22)/9.0 (31)	9.1 (31)/8.5 (33)

Actual mileage may vary with driving conditions – use for comparison only. IMPORTANT: Starting with 2015 model year vehicles, the Government of Canada has mandated new fuel economy test methods to better approximate typical driving conditions and styles. These new 5-cycle test methods are more representative of a vehicle's on road fuel consumption compared to the previous 2-cycle testing methodology, and can produce fuel consumption ratings that are up to 20 percent higher than the previous ratings. Fuel Economy estimates for the Nissan 2015 model year vehicles may seem less favourable compared to previous years and some competing vehicles that have not yet reported based on new testing criteria. 2015 vehicles do not consume more fuel than the comparable 2014 vehicle under the same driving conditions. For more information, please visit